



# rapoo 9900M Multi-Mode Wireless Keyboard and Mouse User Manual

[Home](#) » [rapoo](#) » rapoo 9900M Multi-Mode Wireless Keyboard and Mouse User Manual 

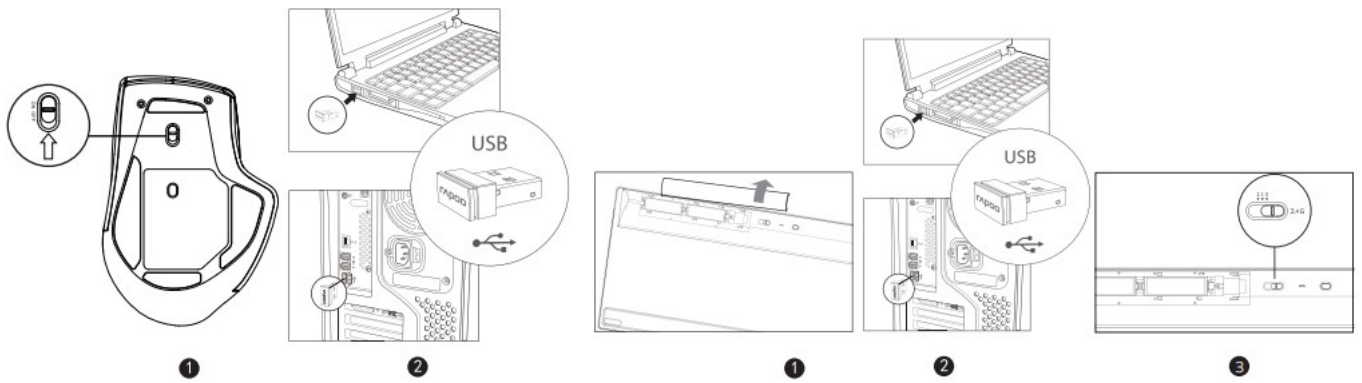


## 9900M Multi-Mode Wireless Keyboard and Mouse User Manual

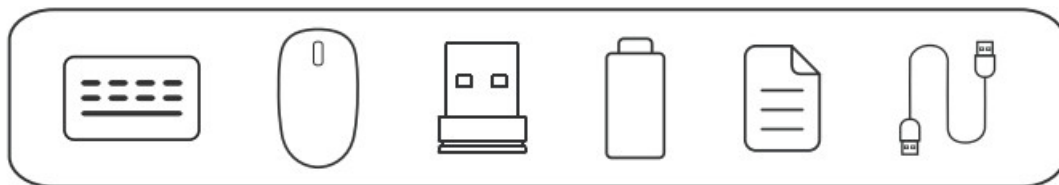
### Contents

- [1 Multi-mode Wireless Keyboard & Mouse](#)
- [2 Overview](#)
- [3 Bluetooth mode](#)
- [4 Low battery](#)
- [5 Switch among devices](#)
- [6 Indicator lights](#)
- [7 System Requirements](#)
- [8 Warranty](#)
- [9 Documents / Resources](#)
  - [9.1 References](#)
- [10 Related Posts](#)

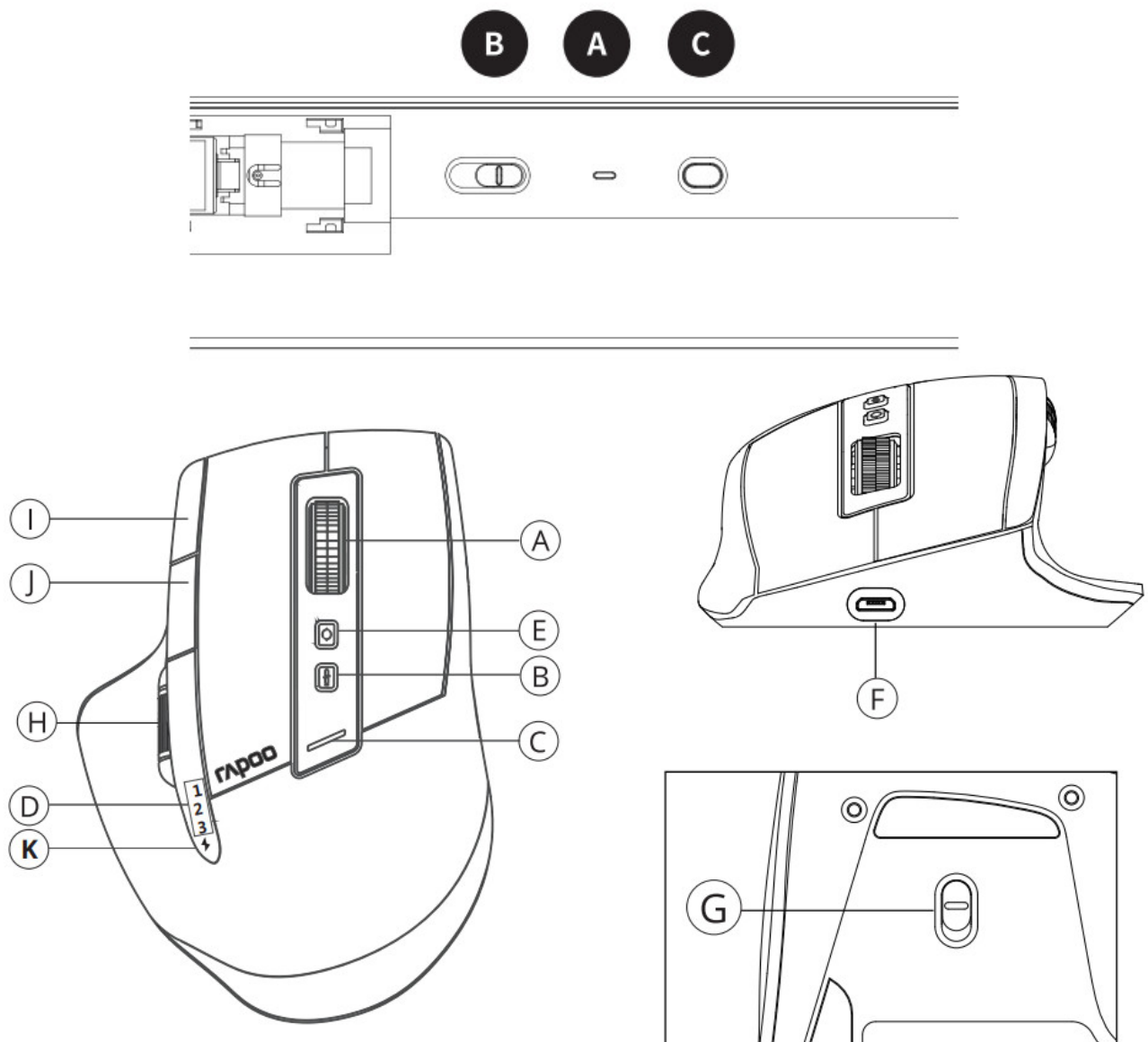
### Multi-mode Wireless Keyboard & Mouse



## Package contents



## Overview



<b>Keyboard</b> A Status LED B Device switch C Bluetooth pairing button <b>Mouse</b> A Scroll wheel B DPI switching button C DPI LED	D Device light E Device switching button F USB port G On/off switch H Side scroll wheel I Forward button J Back button k Low power /Charging indicator
-----------------------------------------------------------------------------------------------------------------------------------------------------------	-----------------------------------------------------------------------------------------------------------------------------------------------------------------------------

## Bluetooth mode

### Keyboard

1. Slide the device switch to select the channel (1, 2 or 3) on which your device is connected.
2. Keep pressing Bluetooth pairing button until status LED starts to flash slowly. The keyboard is discoverable for 60 seconds.
3. Complete Bluetooth pairing on your device. When the keyboard and your device are paired, the status LED turns off.

### Mouse

1. Turn on mouse. Device light starts to blink rapidly.
2. Press the device switch button to select the device channel.
3. Keep pressing the device switch button at least 3 seconds to bluetooth pairing.
4. Connect mouse with your Bluetooth device. Blinking stops.
5. Done.

### Bluetooth pairing

Windows®7 and 8:

1. Click the “Start” button, then select Control Panel > Add a device
2. Select the keyboard or mouse from the list.\*
3. Click Next and follow any other instructions that may appear on the screen.

### Windows®10:

1. Click the “Start” button, then select Settings > Devices > Bluetooth.
2. Select the keyboard or mouse from the list.\*
3. Click Pair and follow any other instructions that may appear on the screen.

\*RAPOO BT3.0 KB/RAPOO BLE KB/Rapoo BleMouse/RAPOO BT3.0 Mouse

**Note:** RAPOO BLE requires Win8 or later version

### Low battery

When you use the keyboard or mouse, if status LED flashes twice every two seconds, it means the battery power

is low.

## Switch among devices

Both the keyboard and the mouse pair up to 3 devices via Bluetooth and 1 device with a 2.4 GHz receiver.

Slide the device switch of the keyboard to switch among paired devices.

Press the device switching button of the mouse to switch among paired devices.

## Indicator lights

Keyboard

Status LED

Bluetooth mode

Status LED slowly flashes blue, indicating the keyboard and your device are pairing for the first time. If your device paired with the keyboard before, the light will rapidly flashes blue when they try to pair again. The light turns off when they are paired.

### Mouse

Device light

Three device lights stand for three different Bluetooth devices.

1. When mouse connects with a 2.4G device, 3 device lights are off.
2. When mouse is trying to connect back with a device, the device light starts to blink rapidly.
3. When mouse is pairing with a Bluetooth device, the device light starts to blink slowly.
4. Bluetooth device connected: The indicator light of the appropriate device is on for 6 seconds when the mouse is picked up.


### Status LED

1. 2.4G indicator


Green LED blinks once.

2. DPI switching indicator

Green LED blinks. It blinks once when you switch to the first DPI, blinks twice for the second DPI, blinks three times for the third DPI and blinks four times for the fourth DPI.

3.  Low power indicator

Red LED blinks twice rapidly every two seconds when mouse is working.

4.  Charging indicator

When mouse is charging, green LED is on. When it is fully charged, green LED is off.

Side scroll wheel

Scroll horizontally by default. Set up customize functions via driver.

## System Requirements

Windows® XP / Vista / 7 / 8 / 10 or later, USB port

## Warranty

The device is provided with two-year limited hardware warranty from the purchase day. Please see [www.rapoo.com](http://www.rapoo.com) for more information.

We, the manufacturer

Shenzhen Rapoo Technology Co., Ltd.

Fax: +86-0755-2858 8555

Declare that the product

Product Name Multi-mode Wireless Keyboard & Mouse

Model No 9900M(E9260S+MT750S)

Complies with the following norms of :

EN 50663:2017

EN 62479:2010

EN 300 440 V2.1.1(2017-03)

EN 300 328 V2.1.1(2016-11)

EN 301 489-1 V2.2.0(2017-03)

EN 301 489-3 V2.1.1(2017-03)

EN 301 489-17 V3.2.0(2017-03)

EN 60950-1:2006+A11:2009+A1:2010+A12:2011+A2:2013

The product is in compliance with the essential requirements of Radio Equipment Directive 2014/53/EU, and the RoHS Directive 2011/65/EU.

Manufacturer/Authorised representative

Kai Guo, Manager

R&D Department Date of Issue: Aug. 30, 2017



## FCC Statement

This equipment has been tested and found to comply with the limits for a Class B digital device, pursuant to part 15 of the FCC rules. These limits are designed to provide reasonable protection against harmful interference in a residential installation. This equipment generates, uses and can radiate radio frequency energy and, if not installed and used in accordance with the instructions, may cause harmful interference to radio communications. However, there is no guarantee that interference will not occur in a particular installation. If this equipment does cause harmful interference to radio or television reception, which can be determined by turning the equipment off and on, the user is encouraged to try to correct the interference by one or more of the following measures:

- Reorient or relocate the receiving antenna.
- Increase the separation between the equipment and receiver.
- Connect the equipment into an outlet on a circuit different from that to which the receiver is connected.
- Consult the dealer or an experienced radio/TV technician for help.

To assure continued compliance, any changes or modifications not expressly approved by the party responsible for compliance could void the user's authority to operate this equipment. (Example- use only shielded interface cables when connecting to computer or peripheral devices).

## FCC Radiation Exposure Statement

This equipment complies with FCC RF radiation exposure limits set forth for an uncontrolled environment. This transmitter must not be co-located or operating in conjunction with any other antenna or transmitter.

This equipment complies with Part 15 of the FCC Rules. Operation is subject to the following two conditions:

1. This device may not cause harmful interference, and
2. This device must accept any interference received, including interference that may cause undesired operation.

**Caution!**

The manufacturer is not responsible for any radio or TV interference caused by unauthorized modifications to this equipment. Such modifications could void the user authority to operate the equipment.



[www.rapoo.com](http://www.rapoo.com)

**ISED RSS warning**

This device complies with Industry Canada licence-exempt RSS standard (s). Operation is subject to the following two conditions:

**ISED Radiation Exposure Statement:**

This equipment complies with ISED RF radiation exposure limits set forth for an uncontrolled environment. This transmitter must not be co-located or operating in conjunction with any other antenna or transmitter.



**Documents / Resources**

	<p><a href="#">rapoo 9900M Multi-Mode Wireless Keyboard and Mouse</a> [pdf] User Manual 9900M Multi-Mode Wireless Keyboard and Mouse, 9900M, Multi-Mode Wireless Keyboard and Mouse, Wireless Keyboard, Keyboard, Mouse</p>
	<p><a href="#">rapoo 9900M Multi Mode Wireless Keyboard and Mouse</a> [pdf] User Guide 9900M, 9900M Multi Mode Wireless Keyboard and Mouse, Multi Mode Wireless Keyboard and Mouse, Wireless Keyboard and Mouse, Keyboard and Mouse, Wireless Mouse</p>

**References**

- [rapoo Rapoo--Wireless Your Life](#)