



# rapoo 9600M Wireless Keyboard and Mouse User Guide

[Home](#) » [rapoo](#) » rapoo 9600M Wireless Keyboard and Mouse User Guide 

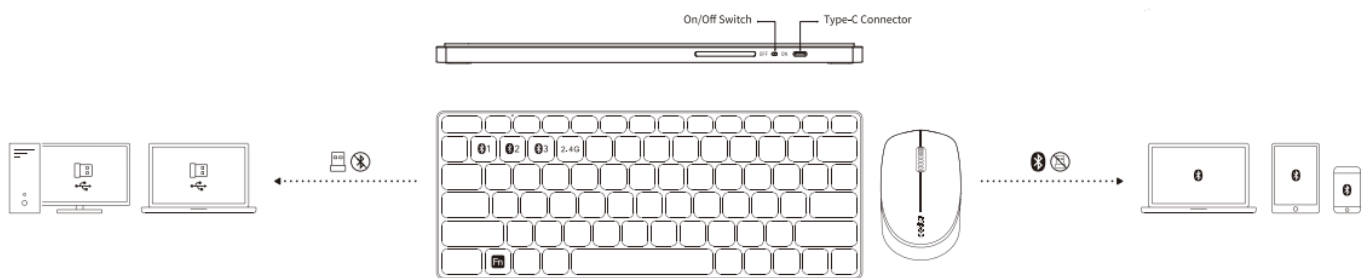
## rapoo 9600M Wireless Keyboard and Mouse

### Contents

- 1 Wireless keyboard and mouse
- 2 Overview
  - 2.1 Keyboard
  - 2.2 Mouse
- 3 Instructions
  - 3.1 Getting started
- 4 Bluetooth mode
  - 4.1 Keyboard
  - 4.2 Mouse
- 5 Bluetooth pairing
- 6 Switching among paired devices
  - 6.1 Keyboard
  - 6.2 Mouse
- 7 Low battery
  - 7.1 Keyboard
  - 7.2 Mouse
- 8 Warranty conditions
- 9 Troubleshooting
- 10 System requirements
- 11 Safety instructions
- 12 Package contents
  - 12.1 Legal & Compliance Information
- 13 Documents / Resources
- 14 Related Posts



## Wireless keyboard and mouse

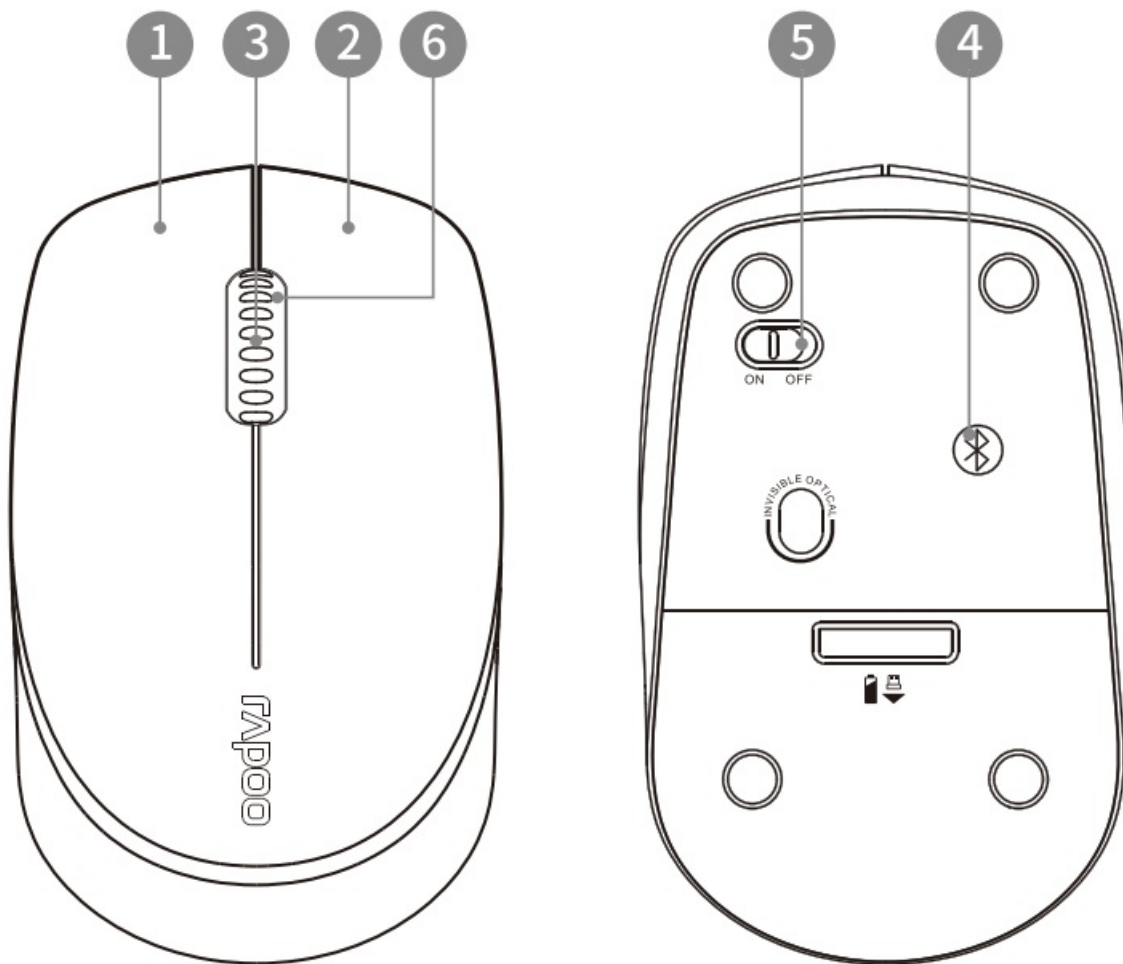


## Overview

### Keyboard

- F<sub>n</sub> + ESC = PrtSc function
- F<sub>n</sub> + F1\* = Back button
- F<sub>n</sub> + F2\* = Forward button
- F<sub>n</sub> + F3\* = Homepage
- F<sub>n</sub> + F4\* = Email
- F<sub>n</sub> + F5\* = Multimedia player
- F<sub>n</sub> + F6 = Play/ Pause
- F<sub>n</sub> + F7\* = Stop
- F<sub>n</sub> + F5 = Previous track
- F<sub>n</sub> + F9 = Next track
- F<sub>n</sub> + F10 = Volume +
- F<sub>n</sub> + F11 = Volume+
- F<sub>n</sub> + F12 = Mute

### Mouse



- 1. = Left button
- 2. = Right button
- 3. = Middle button/ Scroll wheel
- 4. = Bluetooth button
- 5. = On/off switch
- 6. = Status LED

\* (Windows only)

## Instructions

### Getting started

**Keyboard:** We recommend to charge the battery fully before first use.

**Mouse:** The battery of the mouse is pre-installed. Please remove the label next to the battery.

### 2.4GHz

1. Plug the included USB receiver into a USB port on your computer.
2. Turn on the keyboard and the mouse. 2.4GHz mode should be active automatically.

If not, please follow these steps:

**Keyboard:** Press Fn+4 to activate 2.4Ghz mode.

**Mouse:** Press the Bluetooth button shortly until 2.4GHz mode is active.

## Bluetooth mode

### Keyboard

1. Turn on the keyboard.
2. Press and hold key combinations, Fn+I, Fn+2 or Fn+3 at least 3 seconds to pair 3 different devices via Bluetooth. The Status LED flashes blue slowly and the keyboard is discoverable for 120 seconds.
3. Complete "Bluetooth pairing" on your device. When the keyboard and your device are paired, the Status LED turns off

### Mouse

1. Turn on the mouse.
2. Keep pressing the Bluetooth button at least 3 seconds to pair. The Status LED flashes red slowly. The mouse is discoverable for 120 seconds.
3. Complete "Bluetooth pairing" on your device. When the mouse and your device are paired, the Status LED turns off.

## Bluetooth pairing

1. Open the Bluetooth settings on your device.
2. Select the keyboard or mouse from the list.  
**Mouse:** RAPOO 3.0MS / RAPOO S.0MS  
**Keyboard:** RAPOO 3.0KB / RAPOO 5.0KB
3. Click Pair and follow any other instructions that may appear on the screen.

## Switching among paired devices

### Keyboard

Press key combinations Fn+I, Fn+2, Fn+3 or Fn+4 to switch among paired devices.

You can connect the keyboard with up to 4 devices at the same time. (3 devices via Bluetooth, 1 device via USB 2.4 GHz receiver)

### Mouse

Press Bluetooth button to switch among paired devices.

You can connect the mouse with up to 3 devices at the same time. (2 devices via Bluetooth, 1 device via USB 2.4 GHz receiver)

When you pick up the mouse, the Status LED shows which device is active.

1. Status LED stays stable for some seconds= Bluetooth device 1 is connected.
2. Status LED flashes slowly red for some seconds= Bluetooth device 2 is connected.
3. Status LED stays off= USB 2.4GHz receiver is connected.

## Low battery

### Keyboard

If status LED flashes constantly, it means the battery power is low. Please recharge the battery by using the cable included.

### Mouse

If status LED flashes twice every two seconds, it means the battery power is low. Please change the battery.

## Warranty conditions

This device is covered by a 2-year limited hardware warranty from the date of purchase. For more information, please visit [www.rapoo-eu.com](http://www.rapoo-eu.com).

## Troubleshooting

1. Sleep mode: When not using the device for some time it will fall into a sleep mode to save battery. You can press any key to wake it up again for further use.
2. If you are connected via Bluetooth and you maybe have issues with missing letters while typing, please connect again while using the alternative second Bluetooth Option to pair (BT3.0 or BTS.0).
3. If you need more information, please visit [www.rapoo-eu.com](http://www.rapoo-eu.com). There you will find our FAQs. You can also download the latest drivers and User manuals for our products there.

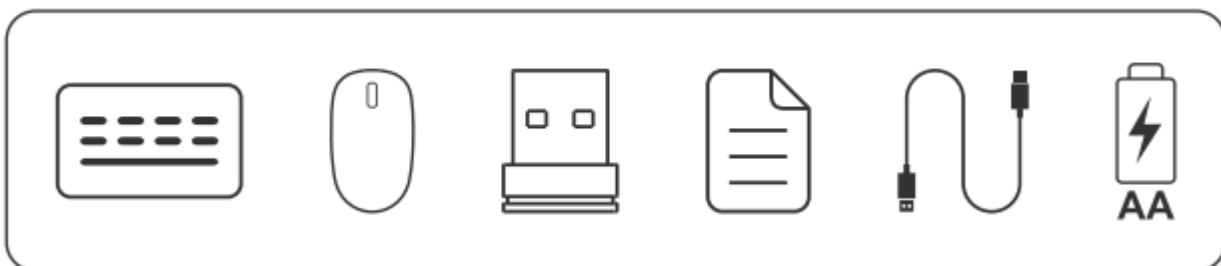
## System requirements

Windows®7 /8/10/11, Mac OS X 10.4 or later, USB port

## Safety instructions

1. Never attempt to open the device or repair it yourself.
2. Do not use the device in a humid environment.
3. Please clean the device with a soft, dry cloth.

## Package contents



## Legal & Compliance Information

**Product:** Rapoo Wireless Keyboard and Mouse

**Model:** 9600M

[www.rapoo-eu.com](http://www.rapoo-eu.com) [comas-europe@rapoo.com](mailto:comas-europe@rapoo.com)

**Manufacturer:**

**Rapoo Europe B.V.**

**Weg en Bos 132 CID 2661 GX Bergschenhoek The Netherlands**

**K Authorized Representative (for authorities only):**

**ProductIP (UK) Ltd.**

**8, Northumberland Av.**

**London WC2N SBY United Kingdom**



**Conformity Information:** Hereby, Rapoo Europe B.V. declares that this radio equipment product is in compliance with Directive 2014/53 EU (RED) and all other applicable EU Regulations. The full text of the EU Declaration of Conformity is available at the following internet address: [www.rapoo-eu.com](http://www.rapoo-eu.com). Operating frequency band: 2402-2480MHz **Maximum radio-frequency power transmitted:** 5dBm/3.16mW



**Conformity Information United Kingdom:** Hereby, Product (UK) Ltd., as authorized representative of Rapoo Europe B.V., declares that this radio equipment product is in compliance with the UK Radio Equipment Regulations 2017 and all other applicable UK Regulations. The full text of the UK Declaration of Conformity is available at the following Internet address: [www.rapoo-eu.com](http://www.rapoo-eu.com). **Operating frequency band:** 2402 to 2480 MHz. **Maximum radio-frequency power transmitted:** 5dBm/3.16mW



**Disposal of Packaging Materials:** The packaging materials have been selected for their environmental friendliness and are recyclable. Dispose of packaging materials which are no longer needed in accordance with applicable local regulations.



**Disposal of the Device:** The symbol above and on the product means that the product is classed as Electrical or Electronic equipment and should not be disposed with other household or commercial waste at the end of its useful life. The Waste of Electrical and Electronic Equipment (WEEE) Directive has been put in place to recycle products using best available recovery and recycling techniques to minimize the impact on the environment, treat any hazardous substances and avoid the increasing landfill. Contact local authorities for information on the correct disposal of Electrical or Electronic equipment.

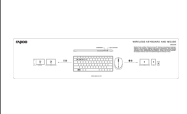
**Made in China**

©2022 Rapoo. All rights reserved. The Bluetooth® word mark and logos are registered trademarks owned by Bluetooth SIG, Inc. and any use of such marks by Rapoo is under license. Rapoo, the Rapoo logo and other Rapoo marks are owned by Rapoo and may be registered. All other trademarks are property of their respective owners,

It's forbidden to reproduce any part of this quick start guide without the permission of Rapoo.



## Documents / Resources

	<p><a href="#">rapoo 9600M Wireless Keyboard and Mouse</a> [pdf] User Guide 9600M Wireless Keyboard and Mouse, 9600M, Wireless Keyboard and Mouse, Keyboard and Mouse, 9600M Keyboard and Mouse, Keyboard, Mouse, Wireless Keyboard, Wireless Mouse</p>
---	---

Manuals+