



rapoo 9500M E9500M+MT550 Multi Mode Wireless Keyboard and Mouse User Guide

[Home](#) » [rapoo](#) » rapoo 9500M E9500M+MT550 Multi Mode Wireless Keyboard and Mouse User Guide

Contents [[hide](#)]

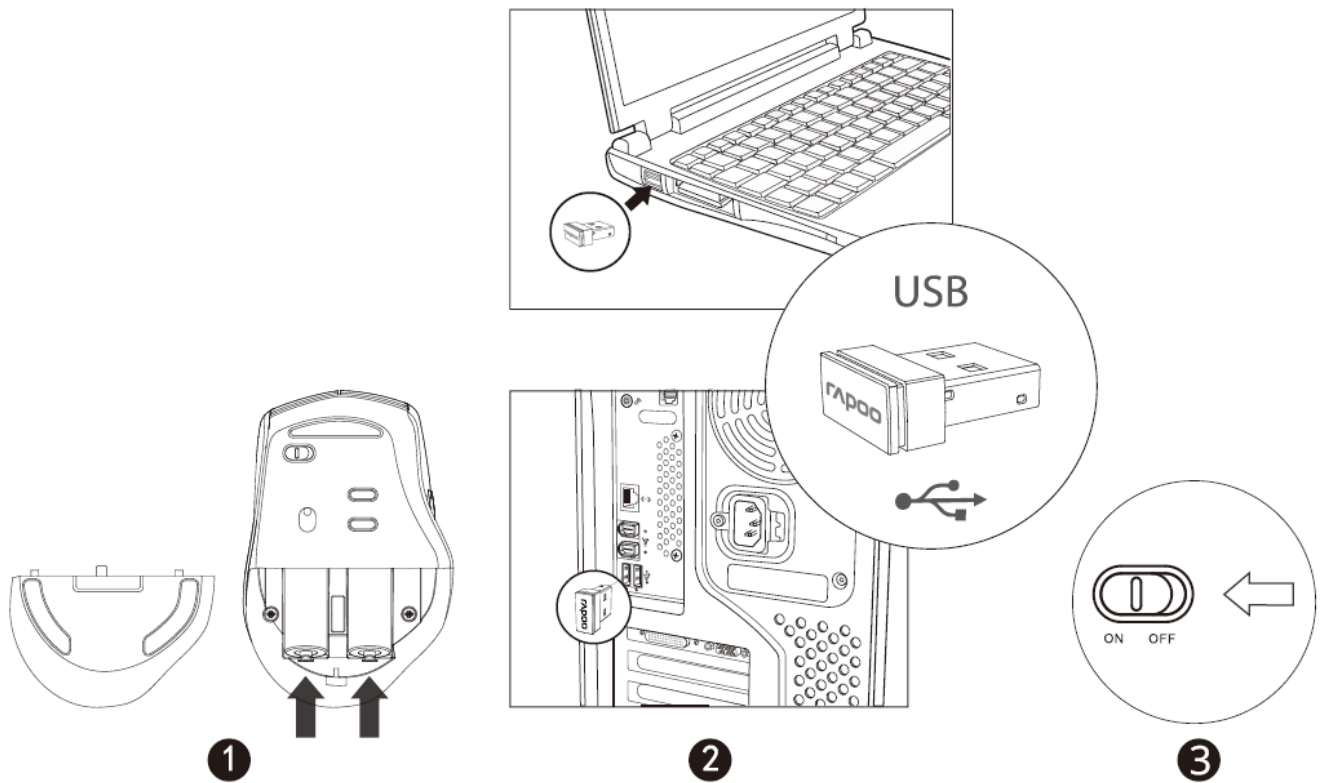
- [1 rapoo 9500M E9500M+MT550 Multi Mode Wireless Keyboard and Mouse](#)
- [2 OVERVIEW](#)
- [3 Switching among paired devices](#)
- [4 Bluetooth mode](#)
- [5 DPI LED/ DPI-LED](#)
- [6 Warranty conditions](#)
- [7 Documents / Resources](#)
- [8 Related Posts](#)

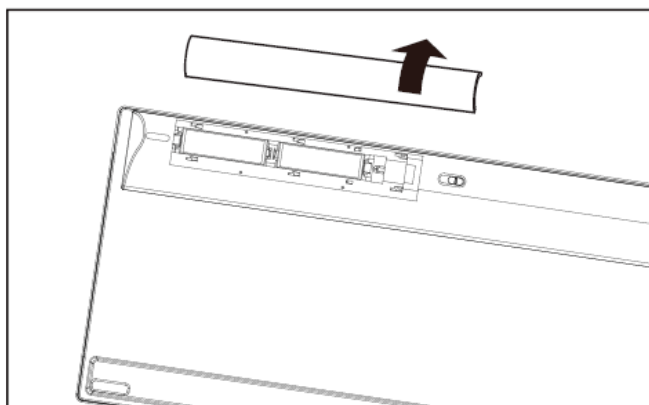
rapoo

rapoo 9500M E9500M+MT550 Multi Mode Wireless Keyboard and Mouse

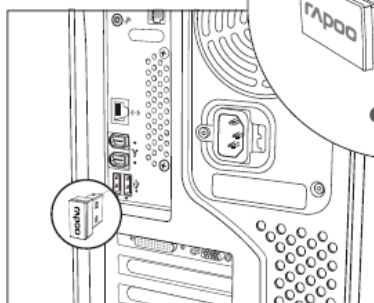
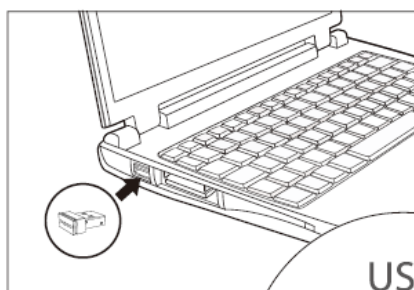


Multi-mode Wireless Keyboard & Mouse

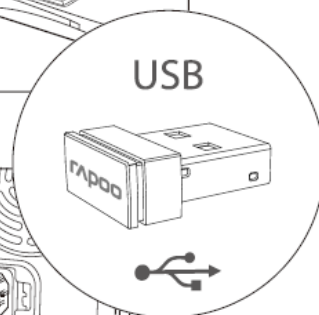




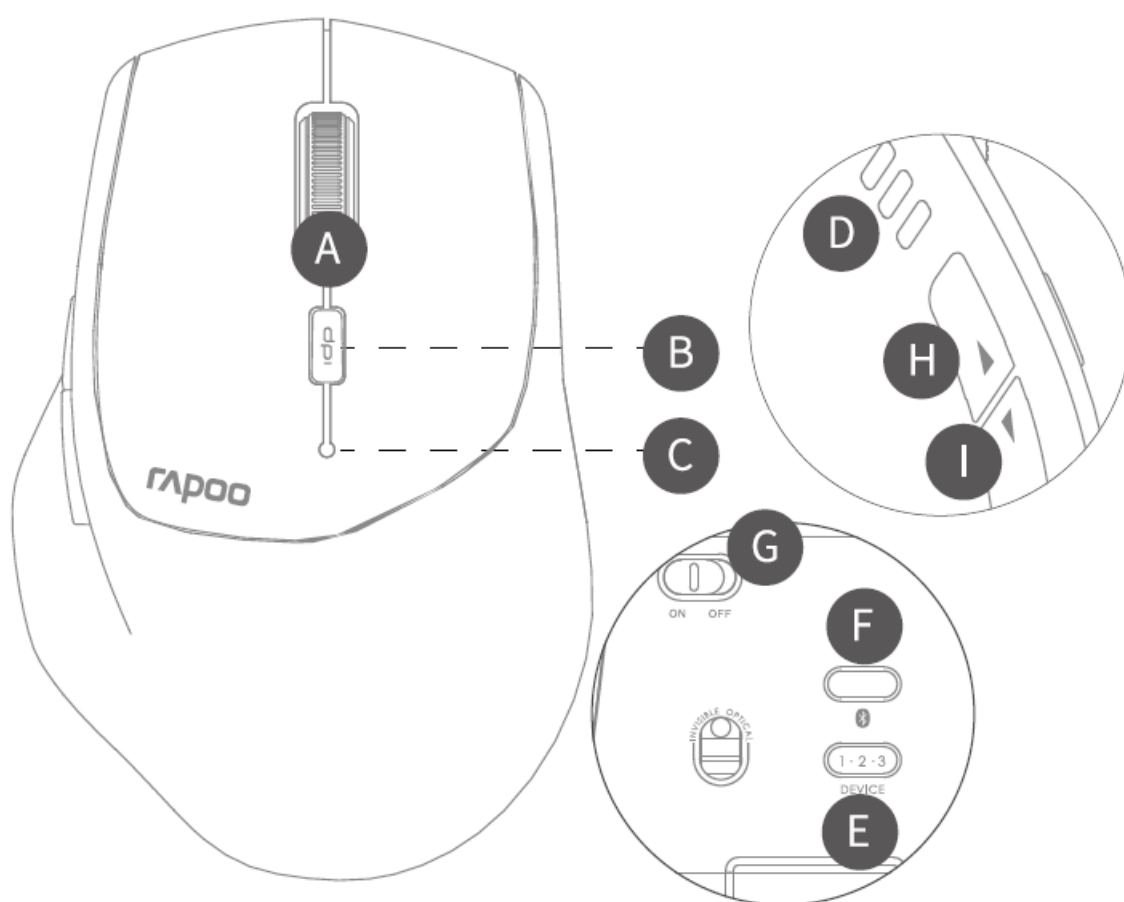
1



2



OVERVIEW



1. Multimedia player

2. Play/ Pause

3. Previous track

4. Next track

5. Volume-

6. Volume+

7. Mute

- **A** Scroll wheel
- **B** DPI Switching button

- **C** DPI LED
- **D** Device light
- **E** Device switching button
- **F** Bluetooth pairing button
- **G** On/off switch
- **H** Forward button
- **I** Back button

Switching among paired devices

Press key combinations of the keyboard, Fn+1, Fn+2, Fn+3 and Fn+4 to SWItch among paired devices. Press the device switching button of the mouse to switch among paired devices. Both the keyboard and the mouse pair up to 3 devices via Bluetooth and 1 device with a 2.4 GHz receiver.

Bluetooth mode

Keyboard

1. Press and hold key combinations, Fn+1, Fn+2 or Fnt3 at least 3 seconds to pair 3 different devices via Bluetooth. The keyboard is discoverable for 60 seconds.
2. Complete Bluetooth pairing on your device.

Mouse

- Turn on mouse. Device light starts to blink rapidly.
- Press device switching button to select the channel on which your device is connected.
- Press Bluetooth pairing button. Device light starts to blink slowly.
- Connect mouse with your Bluetooth device. Device light blinking stop.
- Done

Bluetooth pairing

Windows®7 and 8:

- Click the “Start” button, then select Control Panel > Add a device
- Select the keyboard or mouse from the list.
- Click Next and follow any other instructions that may appear on the **screen.**

Windows®10 and 11:

- Click the “Start” button, then select Settings > Devices> Bluetooth.
- Select the keyboard or mouse from the list.
- Click Pair and follow any other instructions that may appear on the Screen.

DPI LED/ DPI-LED

Mouse

1. DPI switching indicator Green LED blinks. It blinks once when you switch to the first DPI, blinks twice for the second DPI, blinks three times for the third DPI and blinks four times for the fourth DPI.
2. Low power indicator Green LED blinks twice rapidly every two seconds when mouse is working.

Disposal of Packaging Materials: The packaging materials have been selected for their environmental friendliness and Dispose of packaging materials which are no longer needed in accordance with applicable local regulations.


Conformity Information: Hereby, Rapoo Europe B.V. declares that this radio equipment product is in compliance with Directive 2014/53 EU (RED) and all other applicable EU Regulations. The full text of the EU Declaration of Conformity is available at the following internet address: www.rapoo-eu.com. operating frequency band: 2402-2480MHz Maximum radio-frequency power transmitted: 5dBm/3.16mW

Warranty conditions

This device is covered by a 2-year limited hardware warranty from the date of purchase. For more information, please visit www.rapoo-eu.com.



Documents / Resources

	rapoo 9500M E9500M+MT550 Multi Mode Wireless Keyboard and Mouse [pdf] User Guide 9500M E9500M MT550 Multi Mode Wireless Keyboard and Mouse, 9500M, E9500M MT550, 9500M Multi Mode Wireless Keyboard and Mouse, E9500M MT550 Multi Mode Wireless Keyboard and Mouse, Multi Mode Wireless Keyboard and Mouse, Multi Mode Keyboard and Mouse, Wireless Keyboard and Mouse, Keyboard and Mouse, Wireless Keyboard, Keyboard, Wireless Mouse, Mouse
---	--