



rapoo 8110M Multi-mode Wireless Keyboard and Mouse User Guide

[Home](#) » [rapoo](#) » rapoo 8110M Multi-mode Wireless Keyboard and Mouse User Guide 

Contents

- 1 Quick Start Guide
- 2 8110M (K8100M+M 100)
 - 2.1 Bluetooth mode
 - 2.2 Switching among paired devices
 - 2.3 Low battery
 - 2.4 Warranty conditions
 - 2.5 Troubleshooting
 - 2.6 System Requirements
 - 2.7 Package contents
 - 2.7.1 Legal & Compliance Information
 - 2.8 Made in China
- 3 Documents / Resources
- 4 Related Posts

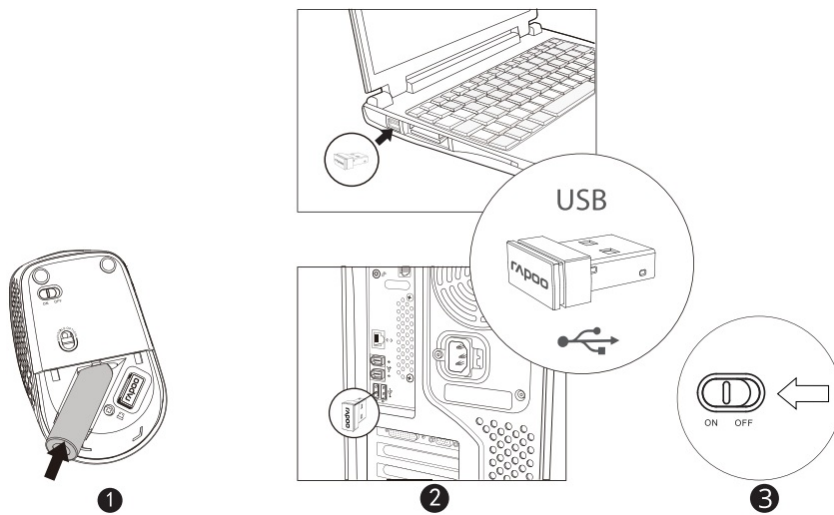


Quick Start Guide

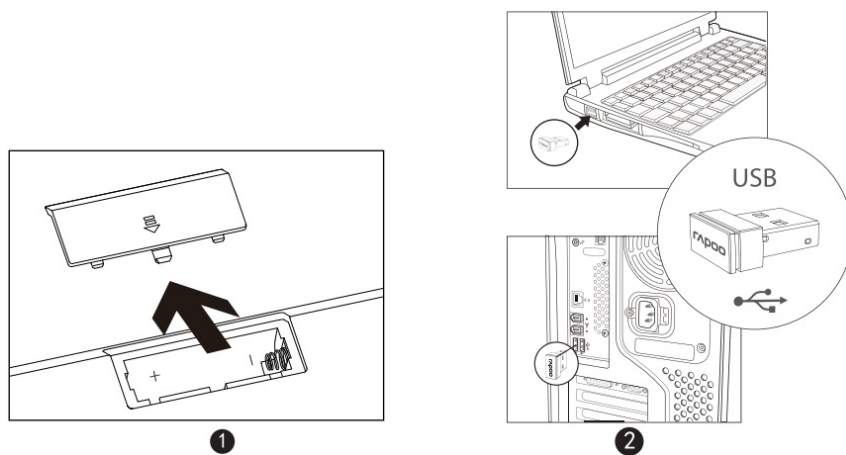
8110M (K8100M+M 100)

Multi-mode Wireless Keyboard & Mouse

2.4 GHz



Mouse



Keyboard

Bluetooth mode



Keyboard

1. Turn on the keyboard.
2. Press and hold the key combination Fn+1, Fn+2 or Fn+3 for at least 3 seconds to connect to three different Bluetooth devices respectively. The status LEDs, blink, blue, green, and cyan blink slowly, respectively. The keyboard will be discoverable for 60 seconds.
3. Complete "Bluetooth pairing" on your device. When the keyboard and your device are paired, the Status LED turns off.

Mouse

1. Turn on the mouse.
2. Keep pressing the Bluetooth button at least 3 seconds to pair. The Status LED flashes red slowly. The mouse is discoverable for 2 minutes.
3. Complete "Bluetooth pairing" on your device. When the mouse and your device are paired, the Status LED turns off.

Bluetooth pairing

1. Open the Bluetooth settings on your device.
2. Select the keyboard or mouse from the list.
 - (1) Mouse: RAPOO BT3.0Mouse / RAPOO BT5.0Mouse
 - (2) Keyboard: RAPOO BT3.0KB / RAPOO BT5.0KB
3. Click Pair and follow any other instructions that may appear on the screen.

Switching among paired devices

Keyboard

Press key combinations Fn + 1, Fn + 2, Fn + 3 or Fn + 4 to switch among paired devices. You can connect the keyboard with up to 4 devices at the same time. (3 devices via Bluetooth, 1 device via USB 2.4 GHz receiver)

Mouse

Press Bluetooth button to switch among paired devices.

You can connect the mouse with up to 3 devices at the same time. (2 devices via Bluetooth, 1 device via USB 2.4 GHz receiver)

When you pick up the mouse, the Status LED shows which device is active.

1. Status LED stays stable for some seconds = Bluetooth device 1 is connected
2. Status LED flashes slowly red for some seconds = Bluetooth device 2 is connected
3. Status LED stays off = USB 2.4GHz receiver is connected

Low battery

Keyboard & Mouse

If status LED flashes twice every two seconds, it means the battery power is low. Please change the battery.

Warranty conditions

This device is covered by a 2-year limited hardware warranty from the date of purchase. For more information, please visit www.rapoo-eu.com.



www.rapoo-eu.com

Troubleshooting

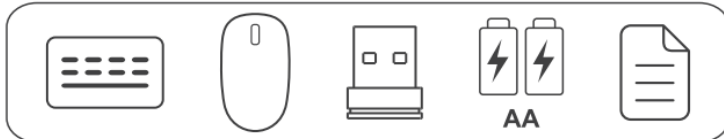
1. Sleep mode: When not using the device for some time it will fall into a sleep mode to save battery. You can press any key to wake it up again for further use.

2. If you are connected via Bluetooth and you maybe have issues with missing letters while typing, please connect again while using the alternative second Bluetooth Option to pair (BT3.0 or BT5.0).
3. If you need more information, please visit www.rapoo-eu.com. There you will find our FAQs. You can also download the latest drivers and User manuals for our products there.

System Requirements

Windows® 7/8/10/11 or later, USB port

Package contents



Legal & Compliance Information

Product: Rapoo Multi-mode Wireless Keyboard & Mouse

Model: 8110M

www.rapoo-eu.com
as-europe@rapoo.com

Manufacturer:

Rapoo Europe B.V.
Weg en Bos 132 C/D
2661 GX Bergschenhoek
The Netherlands

UK Authorized Representative (for authorities only):

ProductiP (UK) Ltd.
8, Northumberland Av.
London WC2N SBY
United Kingdom



Conformity Information: Hereby, Rapoo Europe B.V. declares that this radio equipment product is in compliance with Directive 2014/53 EU (RED) and all other applicable EU Regulations. The full text of the EU Declaration of Conformity is available at the following internet address: www.rapoo-eu.com

Operating frequency band: 2400-2483.5MHz **Maximum radio-frequency power transmitted:** 1.0423 dBm / 1.271mW EIRP



Conformity Information United Kingdom: Hereby, ProductIP (UK) Ltd., as authorized representative of Rapoo Europe BM., declares that this radio equipment product is in compliance with the UK Radio Equipment Regulations 2017 and all other applicable UK Regulations. The full text of the UK Declaration of Conformity is available at the following internet address: www.rapoo-eu.com **Operating frequency band:** 2400 to 2483.5MHz. **Maximum radio-frequency power transmitted:** 1.0423 dBm / 1.271mW



Disposal of Packaging Materials: The packaging materials have been selected for their environmental friendliness and are recyclable. Dispose of packaging materials which are no longer needed in accordance with applicable local regulations.



Disposal of the Device: The symbol above and on the product means that the product is classed as Electrical or Electronic equipment and should not be disposed with other household or commercial waste at the end of its useful life. The Waste of Electrical and Electronic Equipment (WEEE) Directive has been put in place to recycle products using best available recovery and recycling techniques to minimise the impact on the environment, treat any hazardous substances and avoid the increasing landfill. Contact local authorities for information on the correct disposal of Electrical or Electronic equipment.



Disposal of Batteries: Used batteries may not be disposed of in normal household waste. All consumers are required by law to dispose of batteries at a collection point provided by their local community or at a retail store. The purpose of this obligation is to ensure that batteries are disposed of in a non-polluting manner. Only dispose of batteries when they are fully discharged. Cover the poles of partially discharged batteries with tape to prevent short circuits.

Made in China

©2022 Rapoo. All rights reserved. The Bluetooth® word mark and logos are registered trademarks owned by Bluetooth SIG, Inc. and any use of such marks by Rapoo is under license. Rapoo, the Rapoo logo and other Rapoo marks are owned by Rapoo and may be registered. All other trademarks are property of their respective owners.

It is forbidden to reproduce any part of this quick start guide without the permission of Rapoo.



A.1_5613-21902-222



[rapoo 8110M Multi-mode Wireless Keyboard and Mouse](#) [pdf] User Guide
8110M, Multi-mode Wireless Keyboard and Mouse, 8110M Multi-mode Wireless Keyboard and Mouse, Wireless Keyboard and Mouse, Keyboard and Mouse