



rapoo 8060M Wireless Keyboard Mouse Instruction Manual

[Home](#) » [rapoo](#) » rapoo 8060M Wireless Keyboard Mouse Instruction Manual 

Contents

- [1 rapoo 8060M Wireless Keyboard Mouse](#)
- [2 Quick Start Guide](#)
- [3 Instructions](#)
- [4 Overview](#)
- [5 Bluetooth mode](#)
- [6 Status LED](#)
- [7 Low battery](#)
- [8 Warranty conditions](#)
- [9 Legal & Compliance Information](#)
- [10 Documents / Resources](#)
 - [10.1 References](#)
- [11 Related Posts](#)



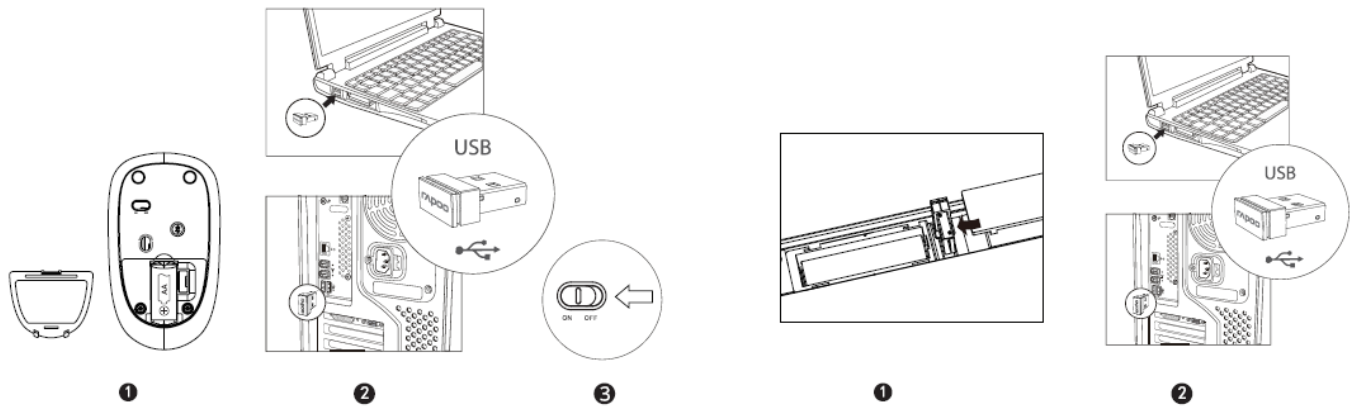
rapoo 8060M Wireless Keyboard Mouse



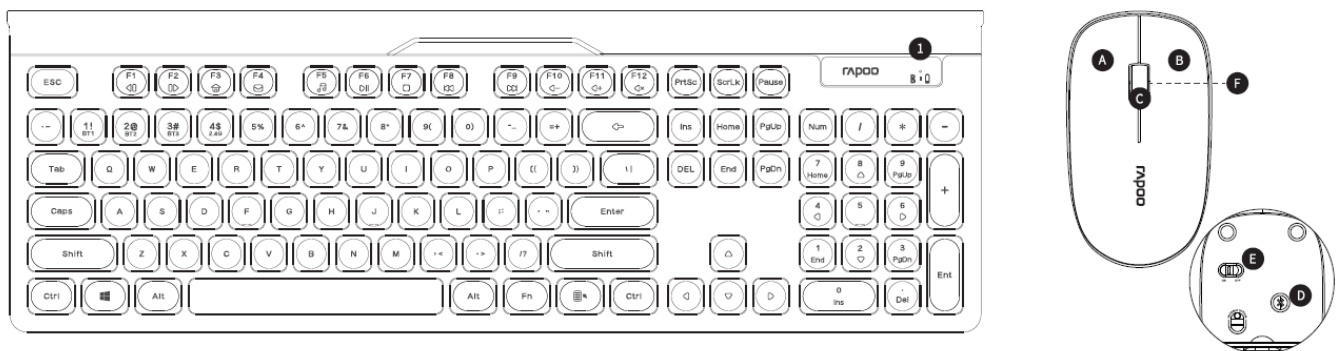
Quick Start Guide

Multi-mode Wireless Keyboard & Mouse
Drahtlose Tastatur und Maus mit Multi-mode
Clavier et souris sans fil multi-mode

Instructions



Overview



Status

LED Multi-media function in Win mode

1. Fn+F1=Back
2. Fn+F2=Forward
3. Fn+F3=Homepage
4. Fn+F4=Email Fn+
5. F5=Multimedia player
6. Fn+F6=Play / Pause
7. Fn+F7=Stop Fn+
8. F8=Previous track
9. Fn+F9=Next track Fn+
10. F10=Volume-
11. Fn+F11=Volume+
12. Fn+F12=Mute

- A Left button
- B Right button
- C Middle button/scroll wheel
- D Bluetooth button
- E On/off switch
- F Status LED

Presione las combinaciones de tecla del teclado Fn+1, Fn+2, Fn+3 y Fn+4 para cambiar entre los dispositivos asociados.

Presione el botón Bluetooth del ratón para cambiar entre los dispositivos asociados.

El teclado y el ratón se conectan a un dispositivo a través de un receptor de 2,4 GHz. Se asocian a 3 y 2 dispositivos, respectivamente, a través Bluetooth.

Bluetooth mode

Keyboard

1. Press and hold key combinations, Fn+1, Fn+2 or Fn+3 at least 3 seconds, Status LED flashes slowly, the keyboard is discoverable for 120 seconds, to pair 3 different devices via Bluetooth.
2. Complete Bluetooth pairing on your device.

Mouse Pair your first device

1. Turn on the mouse.
2. Keep pressing the Bluetooth button at least 3 seconds to pair. The status LED flashes red slowly. The mouse is discoverable for 2 minutes.
3. Complete Bluetooth pairing on your device. When the mouse and your device are paired, the light turns off.

Pair your second device

1. Press the Bluetooth button to switch to another channel.
2. Follow step 2 and 3 of “Pair your first device” to connect your second device.

Bluetooth pairing Windows®7 and 8

1. Click the “Start” button, then select Control Panel > Add a device
2. Select the keyboard or mouse from the list.*
3. Click Next and follow any other instructions that may appear on the screen.

Windows®10 and 11

1. Click the “Start” button, then select Settings > Devices > Bluetooth.
2. Select the keyboard or mouse from the list.*
3. Click Pair and follow any other instructions that may appear on the screen.

Switching among paired devices

- Press key combinations of the keyboard, Fn+1, Fn+2, Fn+3 and Fn+4 to switch among paired devices.
- Press Bluetooth button of the mouse to switch among paired devices.
- The keyboard and the mouse connect a device via 2.4 GHz receiver. They respectively pair 3 and 2 devices via Bluetooth.

Status LED

Keyboard

Status LED flashes slowly, indicating the keyboard and your device are pairing via Bluetooth. The light is always on during back connection.

Mouse

When you pick up the mouse, if the red light turns stable for 6 seconds, Bluetooth device 1 is paired. If the red light flashes slowly, Bluetooth device 2 is paired. If the light is off, the 2.4 GHz device is paired.

Low battery

When you use the keyboard or mouse, if status LED flashes twice every two seconds, it means the battery power is low.

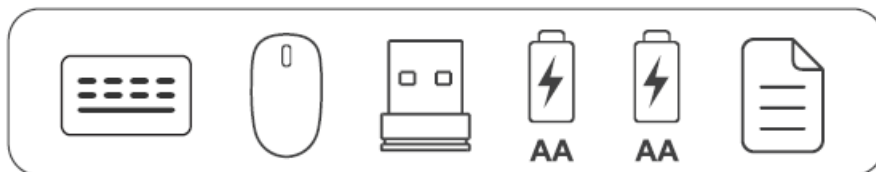
Warranty conditions

This device is covered by a 2-year limited hardware warranty from the date of purchase. For more information, please visit www.rapoo-eu.com.

System Requirements

WindowsR 7/8/10/11. Mac OS X 10.4 or later. USB port

Package contents



Legal & Compliance Information

- Product: Rapoo Multi-mode Wireless Keyboard & Mouse
- Model: 8060M(K275G+M200) www.rapoo-eu.com as-europe@rapoo.com

Manufacturer:

Rapoo Europe B.V. Weg en Bos 132 C/D 2661 GX Bergschenhoek The Netherlands

UK Authorized Representative (for authorities only):

ProductIP (UK) Ltd. 8, Northumberland Av. London WC2N 5BY United Kingdom

Conformity Information

Hereby, Rapoo Europe B.V. declares that this radio equipment product is in compliance with Directive 2014/53 EU (RED) and all other applicable EU Regulations. The full text of the EU Declaration of Conformity is available at the following internet address

www.rapoo-eu.com.

Operating frequency band: 2402-2480MHz Maximum radio-frequency power transmitted: 5dBm/3.16mW

Conformity Information United Kingdom:

Hereby, ProductiP (UD Lad, as authorised representative of Rapoo Europe B.V., declares that this radio equipment product is in compliance with the UK Radio Equipment Regulations 2017 and of other applicable UK Regulations. The full text of this UK Declaration of Conformity is available at the following internet address: www.rapod-eu.com. Operating frequency band: 2402 to 2480 MHz. Maximum radio-frequency power transmitted: 5dBm/3.16mW



Disposal of Packaging Materials: The packaging materials have been selected for their environmental friendliness and are recyclable. Dispose of packaging materials which are no longer needed in accordance with applicable local regulations.



Disposal of the Device

The symbol above and on the product means that the product is classed as Electrical or Electronic equipment and should not be disposed with other household or commercial waste at the end of its useful life. The Waste of Electrical and Electronic Equipment (WEEE Directive) has been put in place to recycle products using best available recovery and recycling techniques to minimise the impact on the environment, treat any hazardous substances and avoid the increasing landfill. Contact local authorities for information on the correct disposal of Electrical or Electronic equipment.



Disposal of Batteries


Used batteries may not be disposed of in normal household waste. All consumers are required by law to dispose of batteries at a collection point provided by their local community or at a retail store. The purpose of this obligation is to ensure that batteries are disposed of in a non-polluting manner. Only dispose of batteries when they are fully discharged. Cover the poles of partially discharged batteries with tape to prevent short circuits.

Made in China ©2022 Rapoo. All rights reserved. The Bluetooth® word mark and logos are registered trademarks owned by Bluetooth SIG, Inc. and any use of such marks by Rapoo is under license. Rapoo, the Rapoo logo and other Rapoo marks are owned by Rapoo and may be registered.

All other trademarks are property of their respective owners. It's forbidden to reproduce any part of this quick start

guide without the permission of Rapoo.

Documents / Resources

	<p>rapoo 8060M Wireless Keyboard Mouse [pdf] Instruction Manual 8060M Wireless Keyboard Mouse, 8060M, Wireless Keyboard Mouse, Keyboard Mouse, Mouse</p>
---	--

References

- [User Manual](#)

[Manuals+](#), [Privacy Policy](#)

This website is an independent publication and is neither affiliated with nor endorsed by any of the trademark owners. The "Bluetooth®" word mark and logos are registered trademarks owned by Bluetooth SIG, Inc. The "Wi-Fi®" word mark and logos are registered trademarks owned by the Wi-Fi Alliance. Any use of these marks on this website does not imply any affiliation with or endorsement.