



# rapoo 8020M Multi Mode Wireless Keyboard and Mouse User Guide

[Home](#) » [rapoo](#) » rapoo 8020M Multi Mode Wireless Keyboard and Mouse User Guide 

## Contents

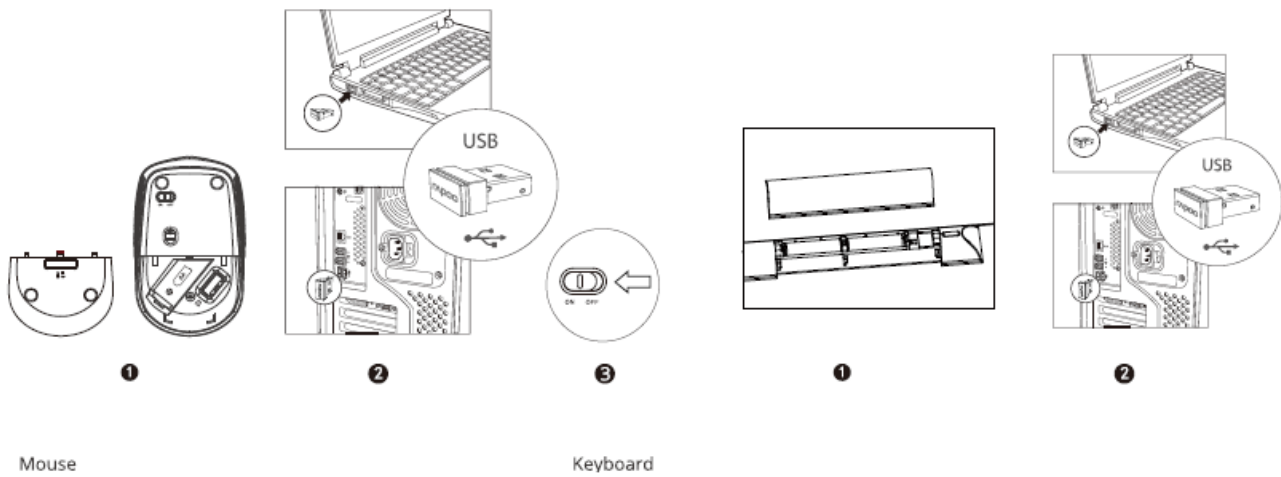
- [1 rapoo 8020M Multi Mode Wireless Keyboard and Mouse](#)
- [2 Instructions](#)
- [3 Overview](#)
- [4 Status LED](#)
- [5 Warranty conditions](#)
- [6 Package contents](#)
- [7 Bluetooth mode](#)
- [8 CONTACT](#)
- [9 Documents / Resources](#)
  - [9.1 References](#)



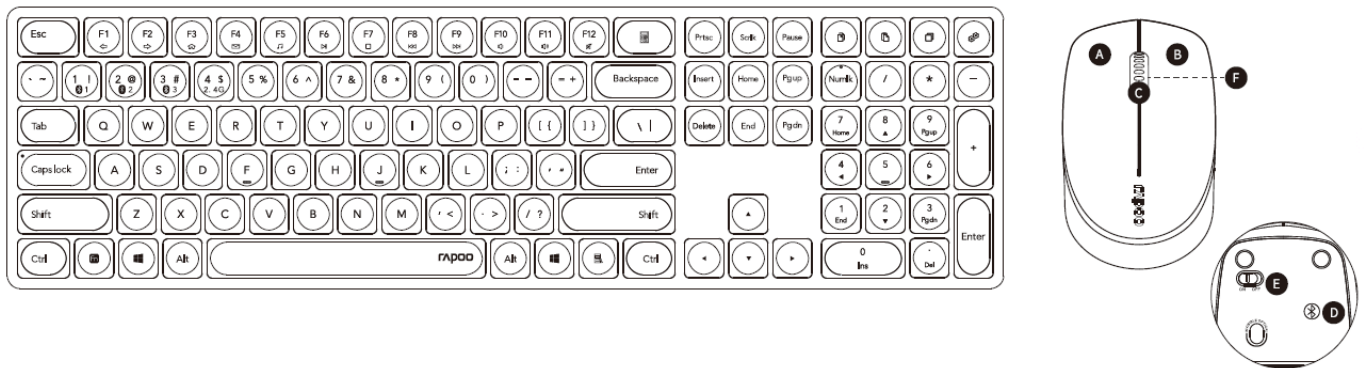
## rapoo 8020M Multi Mode Wireless Keyboard and Mouse



## Instructions



## Overview



## Keyboard

- Fn+F1=Back
- Fn+F2=Forward
- Fn+F3=Homepage
- Fn+F4=Email
- Fn+F5=Multimedia player
- Fn+F6=Play / Pause
- Fn+F7=Stop
- Fn+F8=Previous track
- Fn+F9=Next track
- Fn+F10=Volume-
- Fn+F11=Volume+
- Fn+F12=Mute

### Mouse

- **A** Left button
- **B** Right button
- **C** Middle button/scroll wheel
- **D** Bluetooth button
- **E** On/off switch
- **F** Status LED

## Status LED

### Mouse

When you pick up the mouse, if the red light turns stable for 6 seconds, Bluetooth device 1 is paired. If the red light flashes slowly, Bluetooth device 2 is paired. If the light is off, the 2.4 GHz device is paired.

### Low battery

- When you use the keyboard or mouse, if the status LED flashes twice every two seconds, it means the battery power is low.

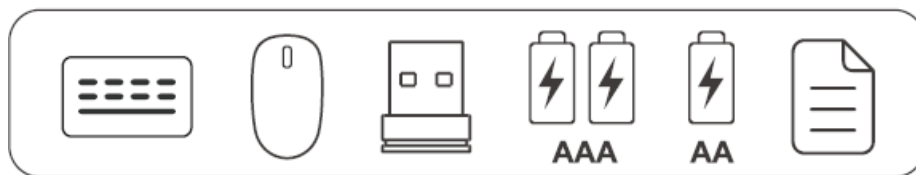
## Warranty conditions

- This device is covered by a 2-year limited hardware warranty from the date of purchase.
- For more information, please visit [www.rapoo-eu.com](http://www.rapoo-eu.com).

## System Requirements

- Windows® 7/8/10/11, Mac OS X 10.4 or later, USB port.

## Package contents



- Conformity Information: Hereby, Rapoo Europe B.V. declares that this radio equipment product complies with Directive 2014/53 EU (RED) and all other applicable EU Regulations. The full text of the EU Declaration of Conformity is available at the following internet address:
- [www.rapoo-eu.com](http://www.rapoo-eu.com). Operating frequency band: 2402-2480MHz Maximum radio-frequency power transmitted: 5dBm/3.16mW

## Bluetooth mode

### Keyboard

1. Press and hold key combinations, Fn+1, Fn+2 or Fn+3 at least 3 seconds, The Status LED flashes slowly, and the keyboard is discoverable for 60 seconds, to pair 3 different devices via Bluetooth.
2. Complete Bluetooth pairing on your device.

### Mouse

Pair your first device

1. Turn on the mouse.

2. Keep pressing the Bluetooth button for at least 3 seconds to pair. The status LED flashes red slowly. The mouse is discoverable for 2 minutes.
3. Complete Bluetooth pairing on your device. When the mouse and your device are paired, the light turns off.

### **Pair your second device**

1. Press the Bluetooth button to switch to another channel.
2. Follow steps 2 and 3 of "Pair your first device" to connect your second device.

### **Bluetooth pairing**

Windows®7 and 8:

1. Click the "Start" button, then select Control Panel > Add a device
2. Select the keyboard or mouse from the list.\*
3. Click Next and follow any other instructions that may appear on the screen.

### **Windows®10 and 11:**

1. Click the "Start" button, then select Settings > Devices > Bluetooth.
2. Select the keyboard or mouse from the list.\*
3. Click Pair and follow any other instructions that may appear on the screen.

\*RAPOO 3.0MS/RAPOO 5.0MS/RAPOO 3.0KB/RAPOO 5.0KB

### **Switching among paired devices**

- Press key combinations of the keyboard, Fn+1, Fn+2, Fn+3 and Fn+4 to switch among paired devices.
- Press the Bluetooth button of the mouse to switch among paired devices.
- The keyboard and the mouse connect a device via a 2.4 GHz receiver. They respectively pair 3 and 2 devices via Bluetooth.

**Conformity Information United Kingdom:** Hereby, ProductIP (UK) Ltd., as an authorized representative of Rapoo Europe B.V., declares that this radio equipment product complies with the UK Radio Equipment Regulations 2017 and all other applicable UK Regulations. The full text of the

**UK Declaration of Conformity is available at the following internet address:** [www.rapoo-eu.com](http://www.rapoo-eu.com). Operating frequency band: 2402 to 2480 MHz. Maximum radio-frequency power transmitted: 5dBm/3.16mW

**Disposal of Packaging Materials:** The packaging materials have been selected for their environmental friendliness and are recyclable. Dispose of packaging materials that are no longer needed under applicable local regulations.

**Disposal of the Device:** The symbol above and on the product means that the product is classed as Electrical or Electronic equipment and should not be disposed of with other household or commercial waste at the end of its useful life. The Waste of Electrical and **Electronic Equipment (WEEE)**  
The directive has been put in place to recycle products using the best available recovery and recycling techniques to minimise the impact on the environment, treat any hazardous substances and avoid the increasing landfill. Contact local authorities for information on the correct disposal of Electrical or Electronic equipment.

**Disposal of Batteries:** Used batteries may not be disposed of in normal household waste. All consumers are required by law to dispose of batteries at a collection point provided by their local community or at a retail store. The purpose of this obligation is to ensure that batteries are disposed of in a non-polluting manner. Only dispose of batteries when they are fully discharged. Cover the poles of partially discharged batteries with tape to prevent short circuits.

### **Made in China**

©2023 Rapoo. All rights reserved. The Bluetooth® word mark and logos are registered trademarks owned by Bluetooth SIG, Inc. and any use of such marks by Rapoo is under license. Rapoo, the Rapoo logo and other Rapoo marks are owned by Rapoo and may be registered. All other trademarks are property of their respective owners. It's forbidden to reproduce any part of this quick start guide without the permission of Rapoo.

## **CONTACT**

### **Legal & Compliance Information**

- Product: Rapoo Multi-mode Wireless Keyboard & Mouse
- Model: 8020M(E8020M+M100)
- [www.rapoo-eu.com](http://www.rapoo-eu.com)
- [as-europe@rapoo.com](mailto:as-europe@rapoo.com)

### **Manufacturer**

- Rapoo Europe B.V.
- Prismalaan West 27
- 2665 PC Bleiswijk
- The Netherlands

### **UK Authorized Representative (for authorities only)**

- ProductIP (UK) Ltd.
- 8, Northumberland Av.
- London WC2N 5BY
- United Kingdom
- [www.rapoo-eu.com](http://www.rapoo-eu.com).





[rapoo 8020M Multi Mode Wireless Keyboard and Mouse](#) [pdf] User Guide  
8020M Multi Mode Wireless Keyboard and Mouse, 8020M, Multi Mode Wireless Keyboard and Mouse, Mode Wireless Keyboard and Mouse, Wireless Keyboard and Mouse, Keyboard and Mouse

References

- [User Manual](#)

[Manuals+](#), [Privacy Policy](#)

This website is an independent publication and is neither affiliated with nor endorsed by any of the trademark owners. The "Bluetooth®" word mark and logos are registered trademarks owned by Bluetooth SIG, Inc. The "Wi-Fi®" word mark and logos are registered trademarks owned by the Wi-Fi Alliance. Any use of these marks on this website does not imply any affiliation with or endorsement.