



## rapoo 8000M Bluetooth Combo User Guide

[Home](#) » [rapoo](#) » rapoo 8000M Bluetooth Combo User Guide 

# rapoo

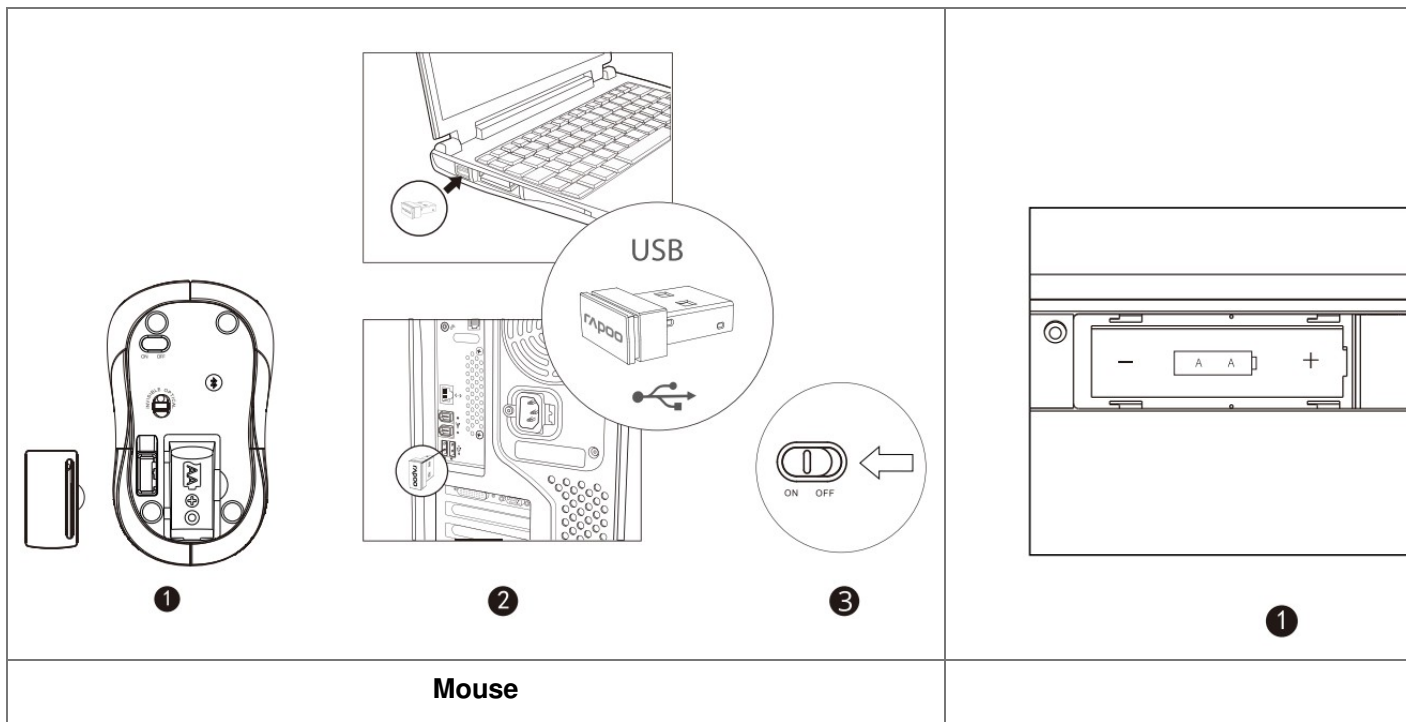
Quick Start Guide  
8000M (K8000M+M160)

### Contents

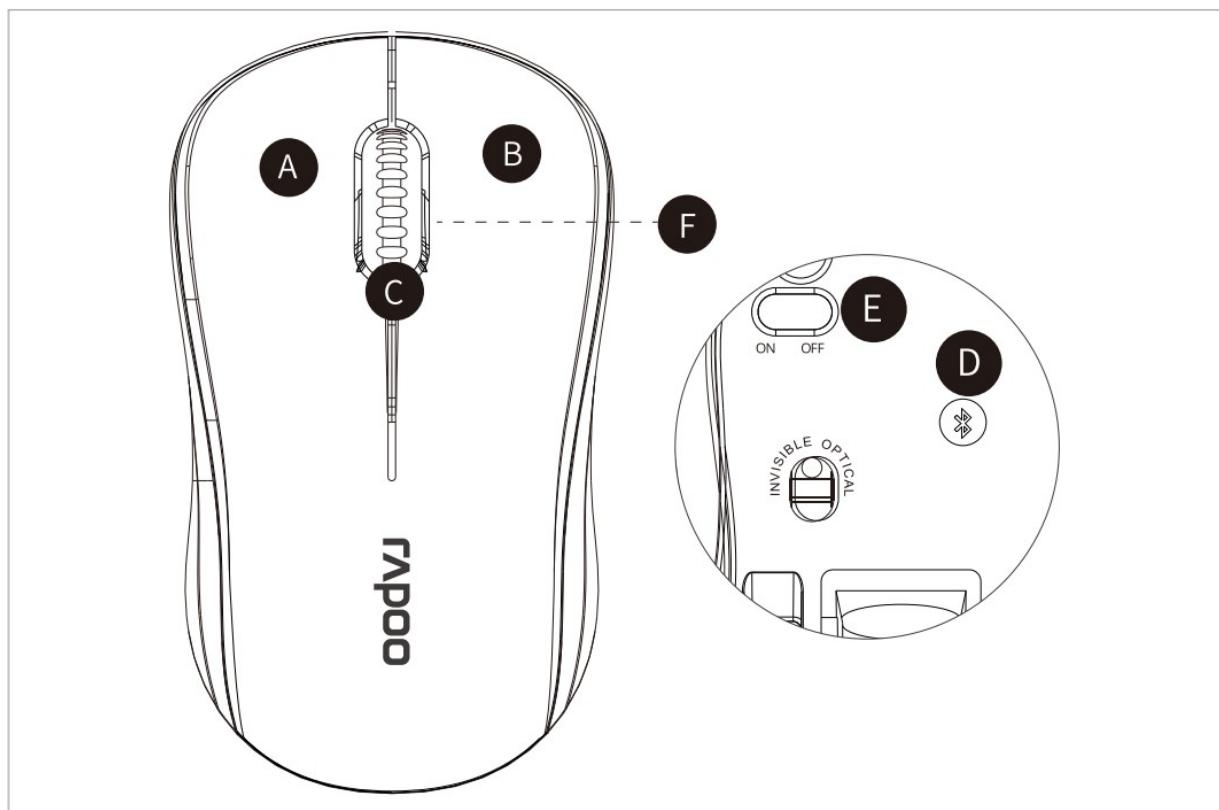
- [1 8000M Bluetooth Combo](#)
- [2 Overview](#)
- [3 Switching among paired devices](#)
- [4 Status LED](#)
- [5 Low battery](#)
- [6 Bluetooth mode](#)
- [7 Warranty conditions](#)
- [8 Package contents](#)
- [9 Documents / Resources](#)
  - [9.1 References](#)

### 8000M Bluetooth Combo

Multi-mode Wireless Keyboard & Mouse  
2.4 GHz



## Overview



### Status LED

Fn + Ins = Switch between Win mode and Mac mode

### Multi-media function in Win mode

Fn + F1 = Back

Fn + F2 = Forward

Fn + F3 = Homepage

Fn + F4 = Email

Fn + F5 = Multimedia player

Fn + F6 = Play / Pause

Fn + F7 = Stop  
Fn + F8 = Previous track  
Fn + F9 = Next track  
Fn + F10 = Volume –  
Fn + F11 = Volume +  
Fn + F12 = Mute

### **Multi-media function in Mac mode**

Fn + F6 = Play / Pause  
Fn + F8 = Previous track  
Fn + F9 = Next track  
Fn + F10 = Volume –  
Fn + F11 = Volume +  
Fn + F12 = Mute

**A** Left button  
**B** Right button  
**C** Middle button/scroll wheel  
**D** Bluetooth button  
**E** ON/OFF switch  
**F** Status LED

### **Switching among paired devices**

Press key combinations of the keyboard, Fn+1, Fn+2, Fn+3 and Fn+4 to switch among paired devices.

Press Bluetooth button of the mouse to switch among paired devices.

The keyboard and the mouse connect a device via 2.4 GHz receiver. They respectively pair 3 and 2 devices via Bluetooth.

### **Status LED**

#### **Keyboard**

Status LED flashes slowly, indicating the keyboard and your device are pairing via Bluetooth. The light is always on during back connection.

#### **Mouse**

When you pick up the mouse, if the red light turns stable for 6 seconds, Bluetooth device 1 is paired. If the red light flashes slowly, Bluetooth device 2 is paired. If the light is off, the 2.4 GHz device is paired.

### **Low battery**

When you use the keyboard or mouse, if status LED flashes twice every two seconds, it means the battery power is low.

### **Bluetooth mode**

#### **Keyboard**

1. Press and hold key combinations, Fn+1, Fn+2 or Fn+3 at least 3 seconds, Status LED flashes slowly, the keyboard is discoverable for 60 seconds, to pair 3 different devices via Bluetooth.
2. Complete Bluetooth pairing on your device.

#### **Mouse**

Pair your first device

1. Turn on the mouse.
2. Keep pressing the Bluetooth button at least 3 seconds to pair. The status LED flashes red slowly. The mouse is discoverable for 2 minutes.
3. Complete Bluetooth pairing on your device. When the mouse and your device are paired, the light turns off.

### **Pair your second device**

1. Press the Bluetooth button to switch to another channel.
2. Follow step 2 and 3 of “Pair your first device” to connect your second device.

### **Bluetooth pairing**

Windows®7 and 8:

1. Click the “Start” button, then select Control Panel > Add a device
2. Select the keyboard or mouse from the list.\*
3. Click Next and follow any other instructions that may appear on the screen.

Windows®10 and 11:

1. Click the “Start” button, then select Settings > Devices > Bluetooth.
2. Select the keyboard or mouse from the list.\*
3. Click Pair and follow any other instructions that may appear on the screen.

\*RAPOO 3.0MS/RAPOO 5.0MS/RAPOO 3.0KB/RAPOO 5.0KB

### **System Requirements**

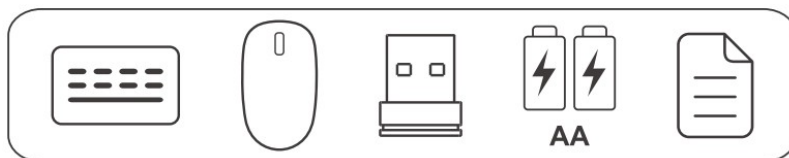
Windows® 7/8/10/11, Mac OS X 10.4 or later, USB port

### **Warranty conditions**

This device is covered by a 2-year limited hardware warranty from the date of purchase. For more information, please visit [www.rapoo-eu.com](http://www.rapoo-eu.com).



### **Package contents**



### **Legal & Compliance Information**

**Product:** Rapoo Multi-mode Wireless Keyboard & Mouse

**Model:** 8000M

[www.rapoo-eu.com](http://www.rapoo-eu.com)

[as-europe@rapoo.com](mailto:as-europe@rapoo.com)

<b>Manufacturer:</b> Rapoo Europe B.V. Prismalaan West 27 2665 PC Bleiswijk The Netherlands	<b>UK Authorized Repres</b> Produ 8, Nortl Londc Unit
---	---



**Conformity Information:** Hereby, Rapoo Europe B.V. declares that this radio equipment product is in compliance with Directive 2014/53 EU (RED) and all other applicable EU Regulations.

The full text of the EU Declaration of Conformity is available at the following internet address: [www.rapoo-eu.com](http://www.rapoo-eu.com)

**Operating frequency band:** 2402-2480 MHz

**Maximum radio-frequency power transmitted:** 5dBm/3.16mW



**Conformity Information United Kingdom:** Hereby, ProductiP (UK) Ltd., as authorized representative of Rapoo Europe B.V., declares that this radio equipment product is in compliance with the UK Radio Equipment Regulations 2017 and all other applicable UK Regulations. The full text of the UK Declaration of Conformity is available at the following internet address: [www.rapoo-eu.com](http://www.rapoo-eu.com)

**Operating frequency band:** 2402 to 2480 MHz, Maximum radio-frequency power transmitted: 5dBm/3.16mW



**Disposal of Packaging Materials:** The packaging materials have been selected for their environmental friendliness and are recyclable. Dispose of packaging materials which are no longer needed in accordance with applicable local regulations.

**Disposal of the Device:** The symbol above and on the product means that the product is classed as Electrical or Electronic equipment and should not be disposed with other household or commercial waste at the end of its useful life. The Waste of Electrical and Electronic Equipment (WEEE) Directive has been put in place to recycle products using best available recovery and recycling techniques to minimise the impact on the environment, treat any hazardous substances and avoid the increasing landfill. Contact local authorities for information on the correct disposal of Electrical or Electronic equipment.

**Disposal of Batteries:** Used batteries may not be disposed of in normal household waste. All consumers are required by law to dispose of batteries at a collection point provided by their local community or at a retail store. The purpose of this obligation is to ensure that batteries are disposed of in a non-polluting manner. Only dispose of batteries when they are fully discharged. Cover the poles of partially discharged batteries with tape to prevent short circuits.

#### Made in China


©2023 Rapoo. All rights reserved. The Bluetooth® word mark and logos are registered trademarks owned by Bluetooth SIG, Inc. and any use of such marks by Rapoo is under license. Rapoo, the Rapoo logo and other Rapoo marks are owned by Rapoo and may be registered. All other trademarks are property of their respective owners.

It's forbidden to reproduce any part of this quick start guide without the permission of Rapoo.



---

## Documents / Resources

	<p><a href="#">rapoo 8000M Bluetooth Combo</a> [pdf] User Guide 8000M Bluetooth Combo, 8000M, Bluetooth Combo, Combo</p>
---	--

## References

- [User Manual](#)

### Manuals+. [Privacy Policy](#)

This website is an independent publication and is neither affiliated with nor endorsed by any of the trademark owners. The "Bluetooth®" word mark and logos are registered trademarks owned by Bluetooth SIG, Inc. The "Wi-Fi®" word mark and logos are registered trademarks owned by the Wi-Fi Alliance. Any use of these marks on this website does not imply any affiliation with or endorsement.