

RAPIDeSIM How To Install and Activate Your Esim On Iphone



RAPIDeSIM How To Install and Activate Your Esim On Iphone User Guide

[Home](#) » [RAPIDeSIM](#) » **RAPIDeSIM How To Install and Activate Your Esim On Iphone User Guide** 

Contents

- 1 [RAPIDeSIM How To Install and Activate Your Esim On Iphone](#)
- 2 [Product Information](#)
- 3 [Product Usage Instructions](#)
- 4 [HOW TO INSTALL AND ACTIVATE YOUR ESIM ON IPHONE](#)
 - 4.1 [INSTALLATION](#)
 - 4.2 [ACTIVATION](#)
 - 4.3 [VERIFY YOUR CONNECTION](#)
- 5 [HOW TO INSTALL AND ACTIVATE YOUR ESIM ON SAMSUNG GALAXY](#)
 - 5.1 [INSTALLATION](#)
 - 5.2 [ACTIVATION](#)
 - 5.3 [VERIFY YOUR CONNECTION](#)
- 6 [Documents / Resources](#)
 - 6.1 [References](#)



RAPIDeSIM How To Install and Activate Your Esim On Iphone



Product Information

Specifications:

- **Product Name:** eSIM for iPhone
- **Installation Method:** Manual or QR Code
- **Activation:** At destination only
- **Compatibility:** iPhone models supporting eSIM

Product Usage Instructions

Installation:

Manual Installation:

1. Go to Settings
2. Go to Cellular
3. Tap on Add eSIM
4. Select "Use QR Code"
5. Tap "Enter Details Manually"
6. Paste the codes received via email and tap Connect
7. Tap Continue and wait
8. Once installation is complete, tap Done
9. Select your new eSIM and rename it, then tap Continue
10. Select primary as your default line and tap Continue
11. Select primary as your line for iMessage & FaceTime and tap Continue

12. Select eSIM as your line for cellular data and tap Continue

QR Installation:

1. Go to Settings
2. Go to Cellular
3. Tap on Add eSIM
4. Select "Use QR Code"
5. Scan the QR code
6. Tap Continue and wait
7. Once installation is complete, tap Done
8. Select your new eSIM and rename it, then tap Continue
9. Select primary as your default line and tap Continue
10. Select primary as your line for iMessage & FaceTime and tap Continue
11. Select eSIM as your line for cellular data and tap Continue

Activation:

1. Go to Settings
2. Go to Cellular
3. Select your eSIM
4. Turn on Data Roaming
5. The activation is done

Verify Your Connection:

To verify the connection, check that the signal icon on the top bar has at least one bar. You can also go to Settings → Cellular and select your eSIM to ensure Data Roaming is on.

Frequently Asked Questions (FAQ):

- **Can I install the eSIM without an internet connection?**

To install the eSIM, you need an Internet connection via Wi-Fi or cellular data for configuration. It is recommended to install it before reaching your destination.

- **Can I activate the eSIM without an internet connection?**

You can activate the eSIM without an Internet connection by enabling roaming or data roaming in your phone settings. It is advisable to activate it upon reaching your destination to avoid early data plan consumption.

HOW TO INSTALL AND ACTIVATE YOUR ESIM ON IPHONE

Install before your trip and activate only at your destination.

INSTALLATION

You can Install your eSIM manually by copying and pasting the installation codes we send you by mail or by scanning the QR code. For the latter, you must have it printed or on another device to scan it, Choose the best option for you.

You can install your eSIM:

1. Manually by copying and pasting the installation codes or
2. Scanning the QR code.

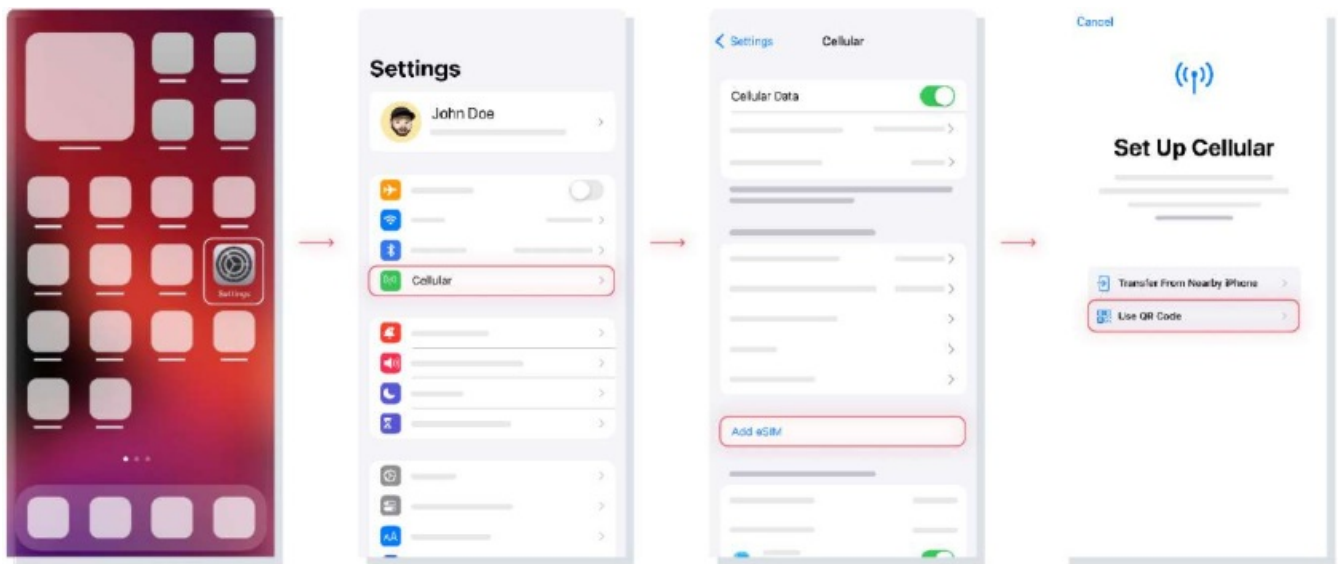
Both were sent to you in the same email. For the latter option, you must have it printed or on another device to scan it. Choose the best option for you. We recommend installing the eSIM before your trip the eSIM before your trip.

MANUAL INSTALLATION

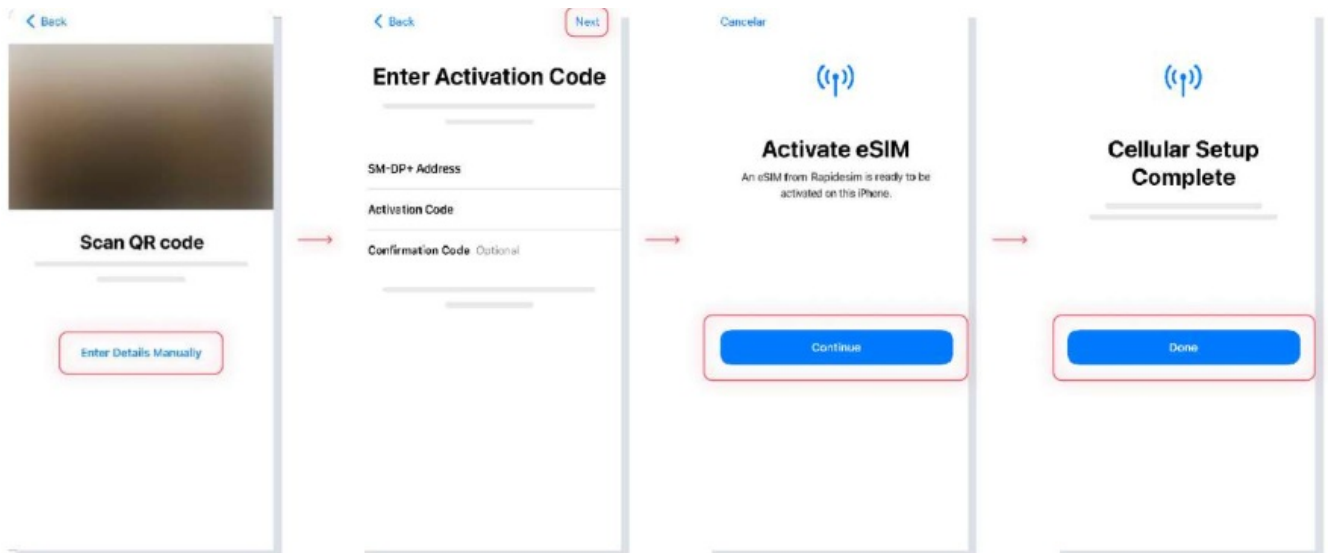
You only have to copy and paste the codes we send you by mail. This option is ideal when you do not have another device.



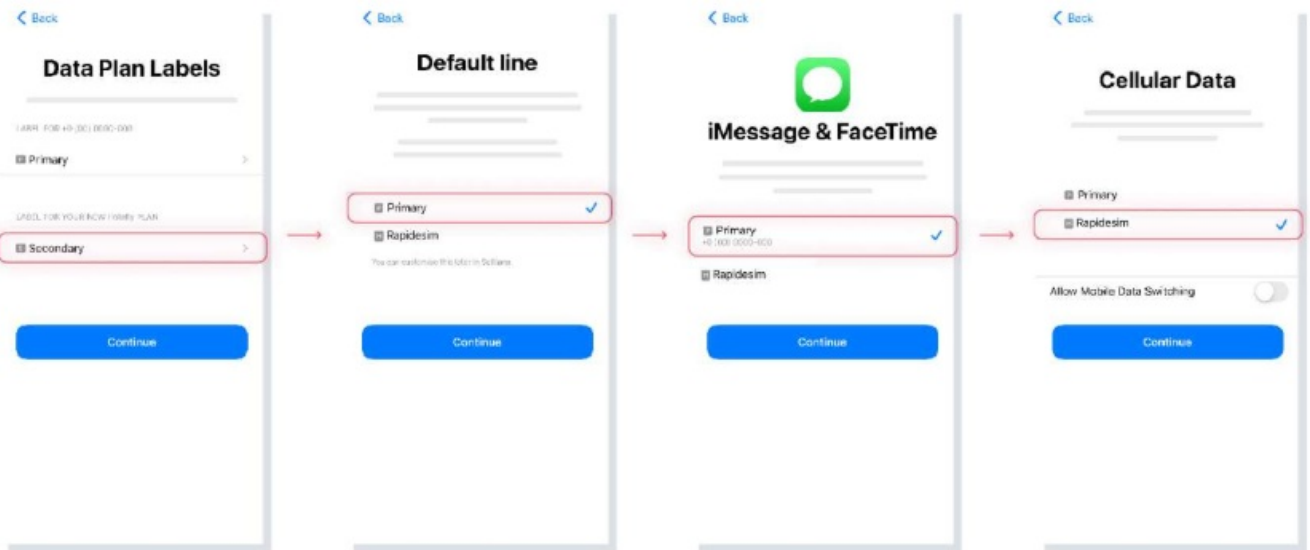
MANUAL INSTALLATION



1. GO TO SETTINGS
2. GO TO CELLULAR
3. TAP ON ADD ESIM
4. SELECT THE QR CODE



5. TAP ENTER DETAILS MANUALLY
6. PASTE THE CODES WE SENT TO YOUR E-MAIL, AND TAP CONNECT.
7. TAP CONTINUE AND WAIT
8. THE INSTALLATION IS COMPLETE, TAP DONE



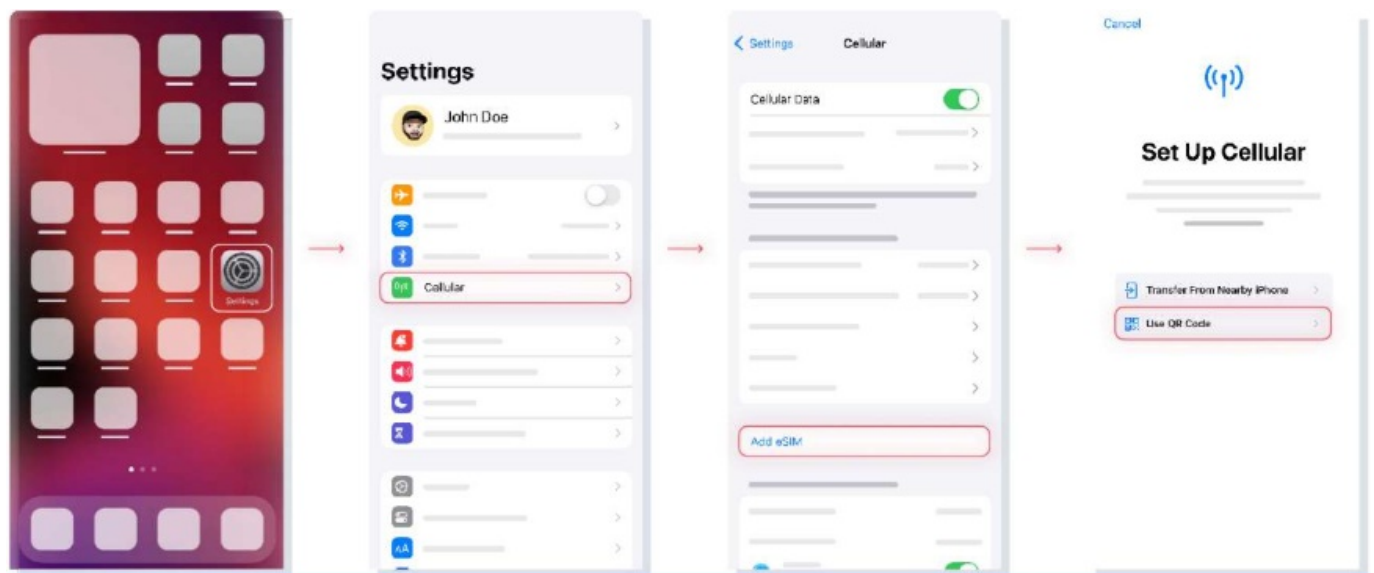
9. SELECT YOUR NEW RAPIDESIM AND RENAME IT. THEN TAP CONTINUE.
10. SELECT PRIMARY AS YOUR DEFAULT LINE AND TAP CONTINUE
11. SELECT PRIMARY AS YOUR LINE FOR IMESSAGE & FACETIME AND TAP CONTINUE
12. SELECT RAPIDESIM AS YOUR LINE FOR CELLULAR DATA AND TAP CONTINUE

QR INSTALLATION

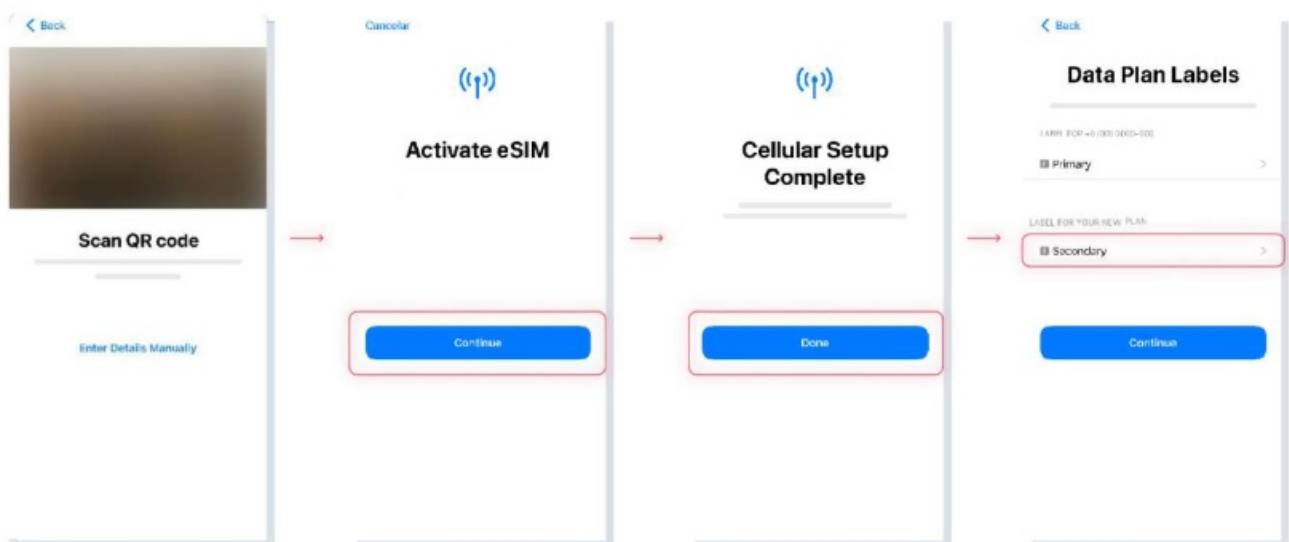
Choose this option if you have the QR code printed or on another device to scan it from your cell phone.



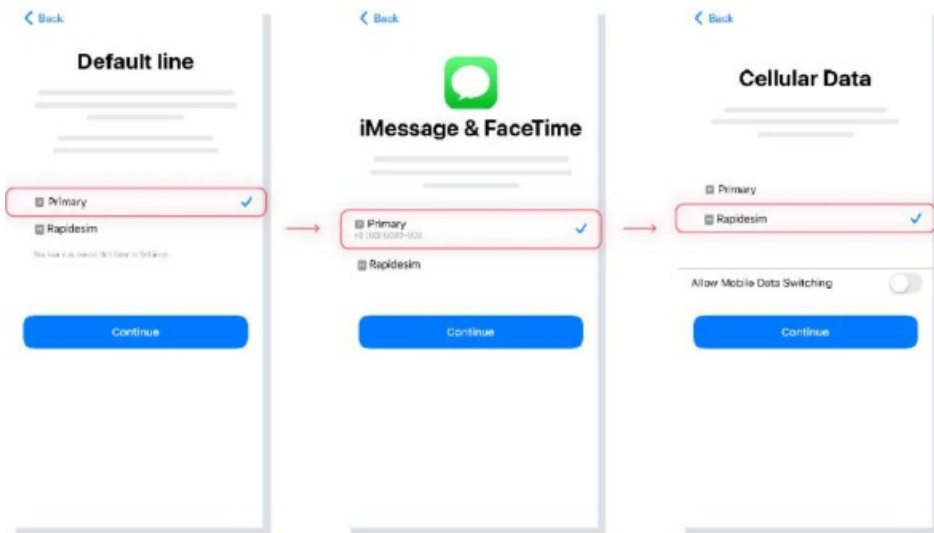
QR INSTALLATION



1. GO TO SETTINGS
2. GO TO CELLULAR
3. TAP ON ADD ESIM
4. SELECT USE QR CODE



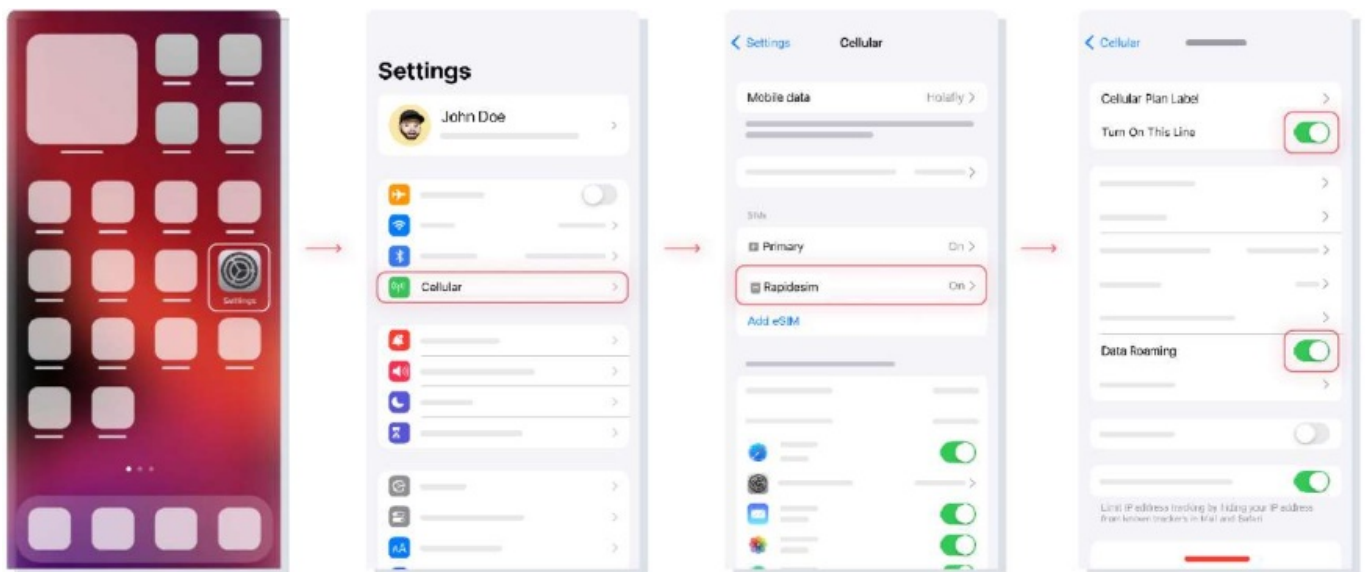
5. SCAN THE CODE
6. TAP CONTINUE AND WAIT
7. THE INSTALLATION IS COMPLETE, TAP DONE
8. SELECT YOUR NEW RAPIDESIM ESIM AND RENAME IT. THEN TAP CONTINUE.



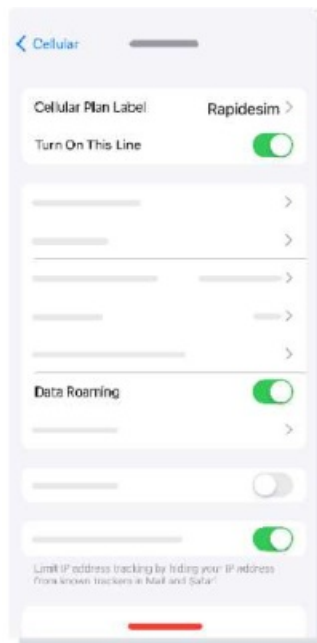
9. SELECT PRIMARY AS YOUR DEFAULT LINE AND TAP CONTINUE
10. SELECT PRIMARY AS YOUR LINE FOR IMESSAGE & FACETIME AND TAP CONTINUE
11. SELECT RAPIDESIM AS YOUR LINE FOR CELLULAR DATA AND TAP CONTINUE

ACTIVATION

Activate only at your destination



1. GO TO SETTINGS
2. GO TO CELLULAR
3. SELECT YOUR RAPIDESIM
4. TURN ON DATA ROAMING
5. THE ACTIVATION IS DONE.



VERIFY YOUR CONNECTION

- One way is to verify that the signal icon on the top bar of your phone has at least one bar.
- Also, you can go to Settings → Cellular and select your Rapidesim to verify that the Data Roaming toggle is on.

Can | install the eSIM without an internet connection?

To install the eSIM you must have an Internet connection through a WI-FI network or cellular data that allows you to carry out the necessary configuration on your cell phone. For this reason, we recommend that you install it before you arrive at your destination.

Can | activate the eSIM without an internet connection?

To activate the aSIM, you do not need to have an Internet connection, since activating roaming or data roaming from your cell phone settings will activate the plan. We recommend that you activate it as soon as you arrive at your destination so as not to consume your data plan ahead of time.

Why do | need the internet to use the app?

You need to have an Internet connection because it is necessary to validate the data provided with third parties, and, so that you can see the consumption of your data plan.

HOW TO INSTALL AND ACTIVATE YOUR ESIM ON SAMSUNG GALAXY

Install before your trip and activate only at your destination.

INSTALLATION

You can Install your eSIM manually by copying and pasting the installation codes we send you by mail or by scanning the GR code. For the latter, you must have it printed or on another device to scan it, Choose the best option for you.

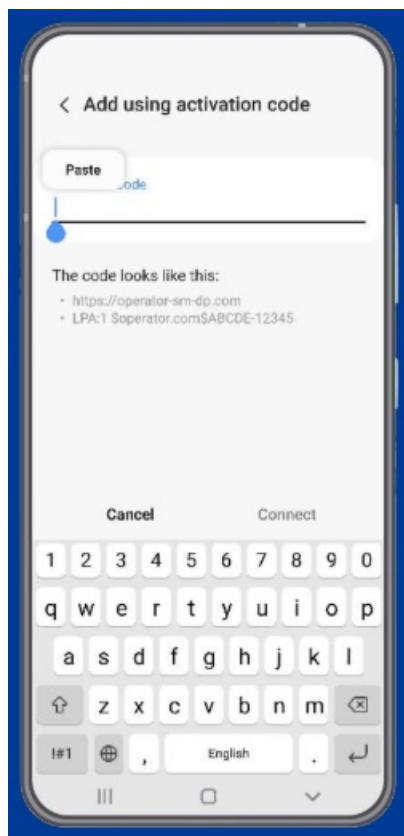
You can install your eSIM:

1. Manually by copying and pasting the installation codes or
2. Scanning the QR code.

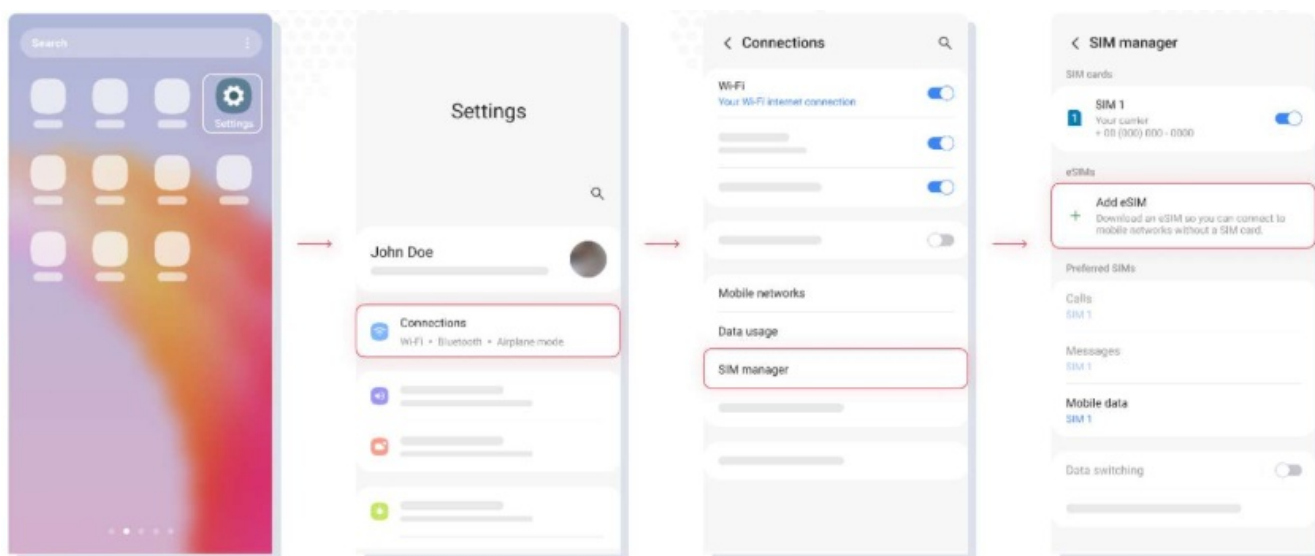
Both were sent to you in the same email. For the latter option, you must have it printed or on another device to scan it. Choose the best option for you. We recommend installing the eSIM before your trip the eSIM before your trip.

MANUAL INSTALLATION

You only have to copy and paste the codes we send you by mail. This option is ideal when you do not have another device.

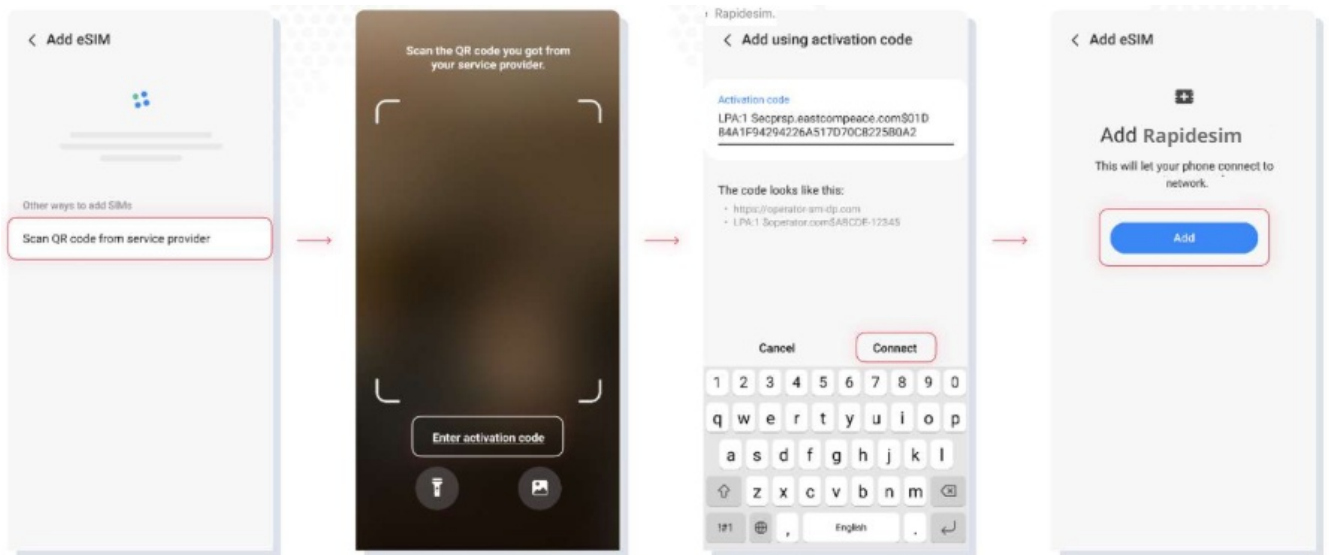


1. GO TO SETTINGS
2. CONNECTIONS
3. SIM MANAGER
4. TAP ADD ESIM



5. SCAN QR CODE FROM SERVICE PROVIDER
6. TAP ENTER ACTIVATION CODE
7. PASTE THE CODE WE SENT TO YOUR E-MAIL, AND TAP CONNECT

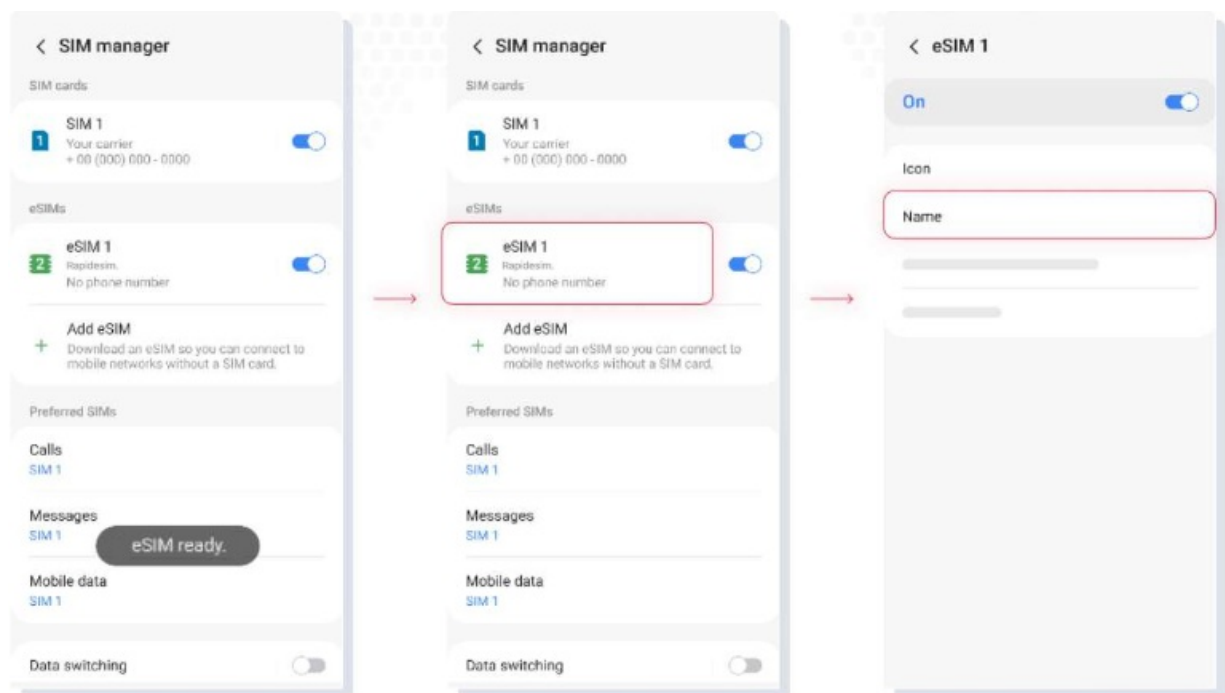
8. TAP ADD AND WAIT



9. THE INSTALLATION IS DONE

10. TAP ON YOUR NEW ESIM

11. TAP NAME AND RENAME IT. WE RECOMMEND YOU CALL IT, FOR EXAMPLE RAPIDESIM.

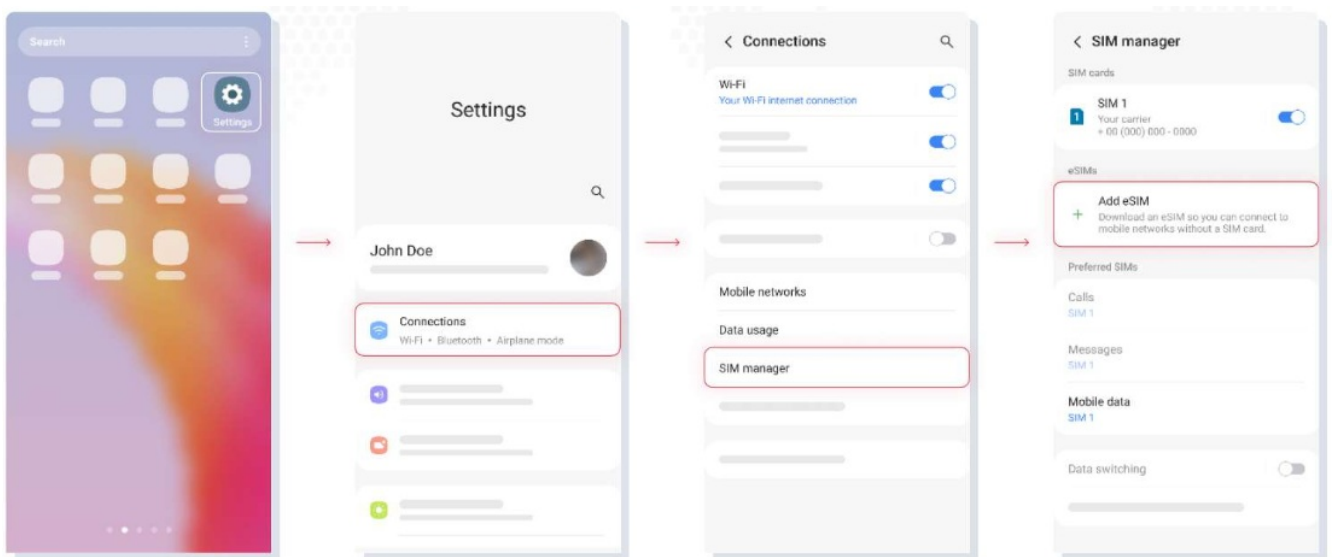


QR INSTALLATION

Choose this option if you have the QR code printed or on another device to scan it from your cell phone.

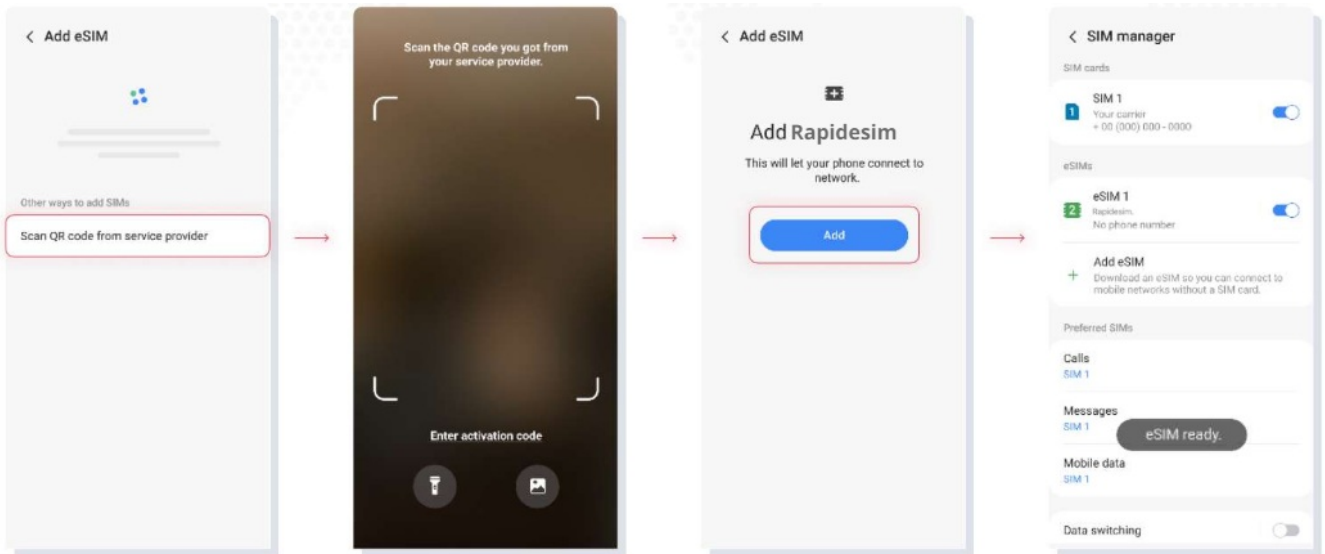


1. GO TO SETTINGS
2. CONNECTIONS
3. SIM MANAGER
4. TAP ADD ESIM



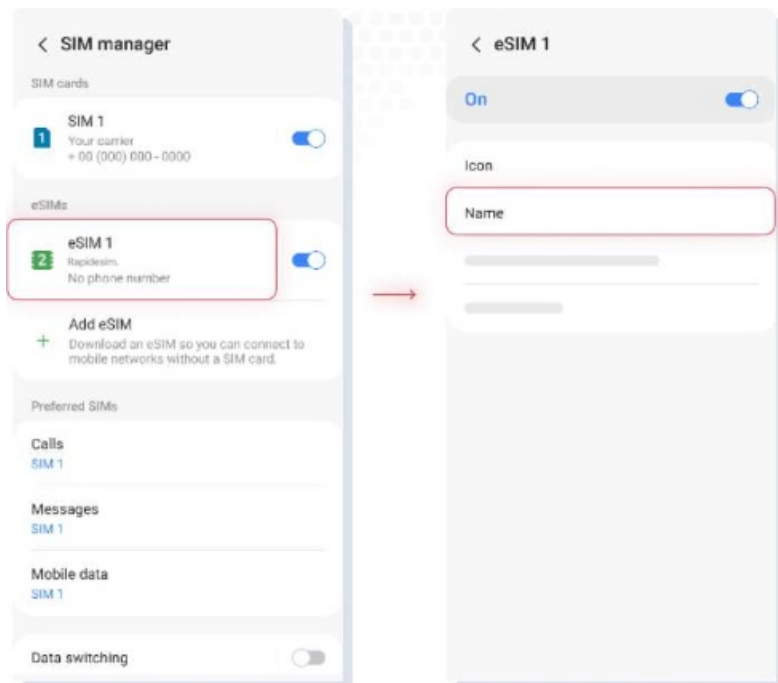
5. SCAN QR CODE FROM SERVICE PROVIDER
6. SCAN THE CODE YOU RECEIVED FROM RAPIDESIM
7. TAP ADD AND WAIT

8. THE INSTALLATION IS DONE



9. TAP ON YOUR NEW ESIM

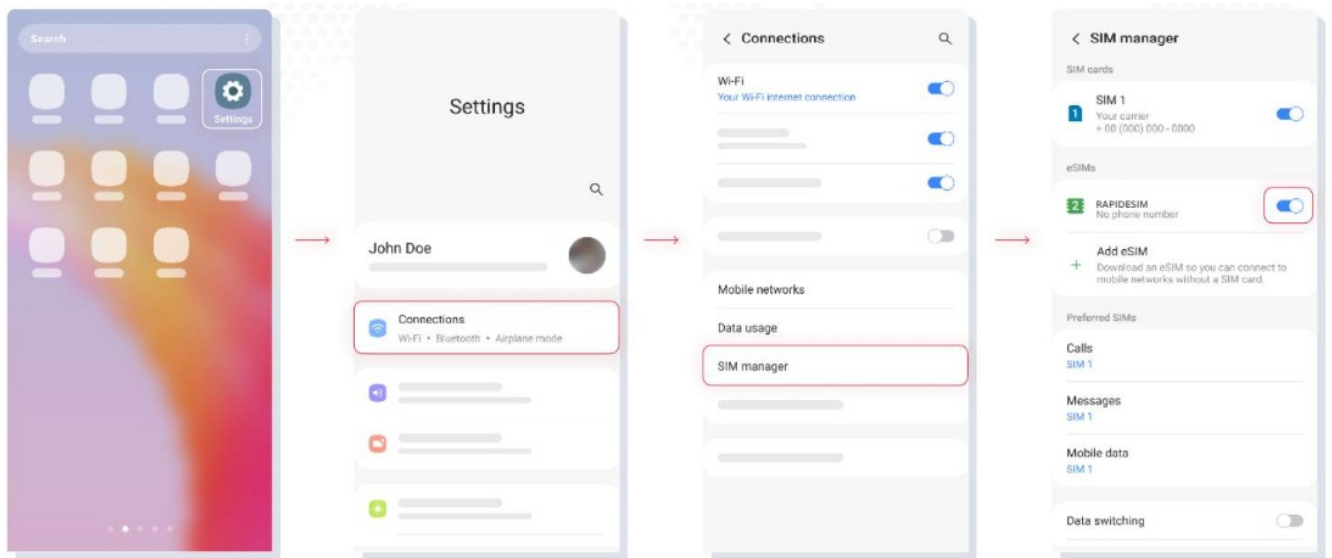
10. TAP NAME AND RENAME IT. WE RECOMMEND YOU CALL IT, FOR EXAMPLE: RAPIDESIM



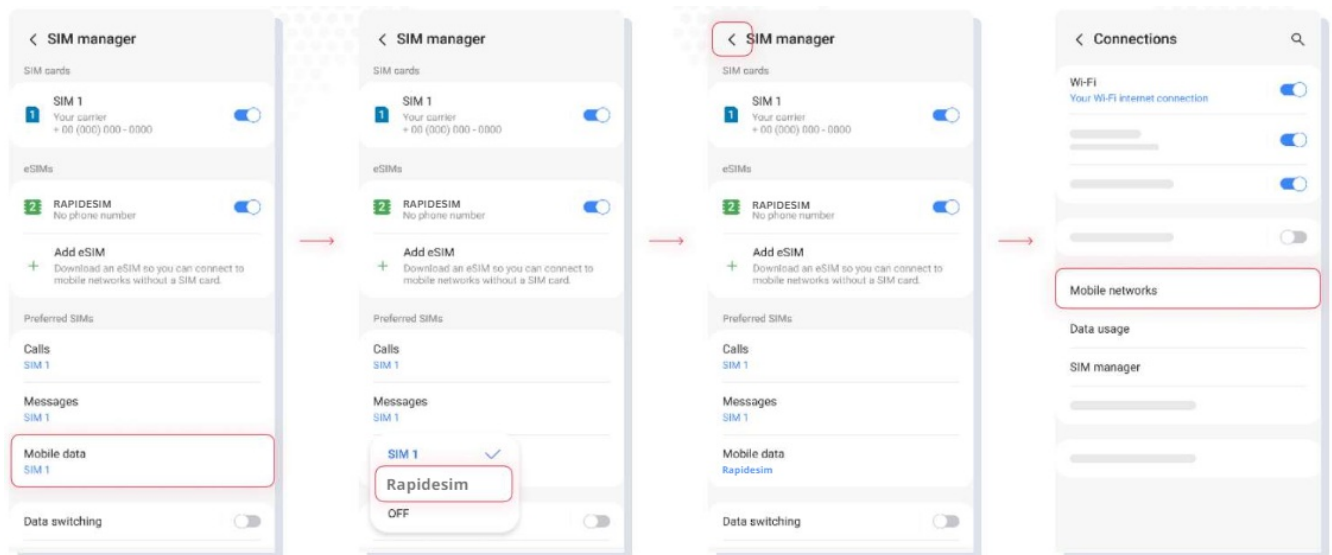
ACTIVATION

Activate only at your destination.

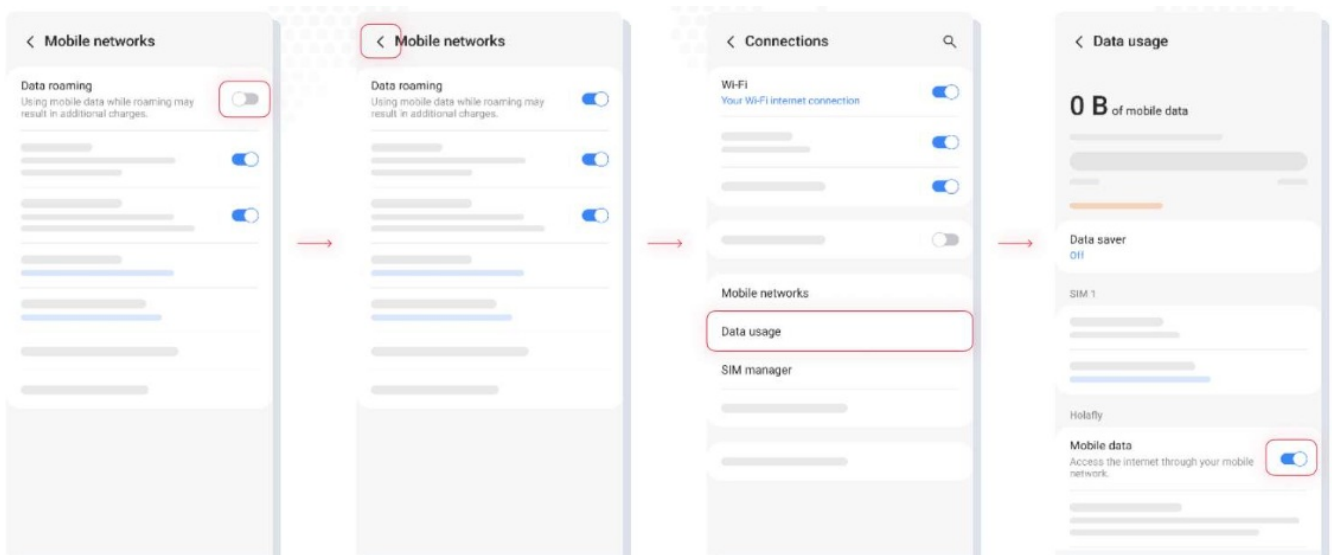
1. GO TO SETTINGS
2. CONNECTIONS
3. SIM MANAGER
4. TURN ON YOUR RAPIDESIM



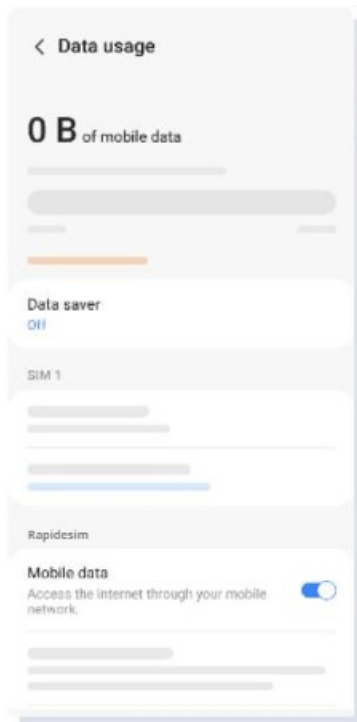
5. TAP ON MOBILE DATA
6. SELECT RAPIDESIM AS YOUR SIM FOR DATA.
7. GO BACK TO CONNECTIONS
8. TAP ON MOBILE NETWORKS



9. TURN ON DATA ROAMING
10. GO BACK TO CONNECTIONS
11. TAP ON DATA USAGE
12. MAKE SURE MOBILE DATA FOR RAPIDESIM IS ON



13. THE ACTIVATION IS DONE



VERIFY YOUR CONNECTION

- One way is to verify that the signal icon on the top bar of your phone has at least one bar.
- Also, you can go to Settings → Cellular and select your Rapidesim to verify that the Data Roaming toggle is on.

Can | install the eSIM without an internet connection?

To install the eSIM you must have an Internet connection through a WI-FI network or cellular data that allows you to carry out the necessary configuration on your cell phone. For this reason, we recommend that you install it before you arrive at your destination.


Can | activate the eSIM without an internet connection?

To activate the aSIM, you do not need to have an Internet connection, since activating roaming or data roaming from your cell phone settings will activate the plan. We recommend that you activate it as soon as you arrive at your destination so as not to consume your data plan ahead of time.

Why do | need the internet to use the app?

You need to have an Internet connection because it is necessary to validate the data provided with third parties, and, so that you can see the consumption of your data plan.

Documents / Resources

	RAPIDeSIM How To Install and Activate Your Esim On Iphone [pdf] User Guide How To Install and Activate Your Esim On Iphone, Your Esim On Iphone, Esim On Iphone, Iphone
---	--

References

- [User Manual](#)

[Manuals+](#), [Privacy Policy](#)

This website is an independent publication and is neither affiliated with nor endorsed by any of the trademark owners. The "Bluetooth®" word mark and logos are registered trademarks owned by Bluetooth SIG, Inc. The "Wi-Fi®" word mark and logos are registered trademarks owned by the Wi-Fi Alliance. Any use of these marks on this website does not imply any affiliation with or endorsement.