



RANGER DESIGN Ladder Rack Mounting Kit for Transit Connect Installation Guide

[Home](#) » [RANGER DESIGN](#) » RANGER DESIGN Ladder Rack Mounting Kit for Transit Connect Installation Guide



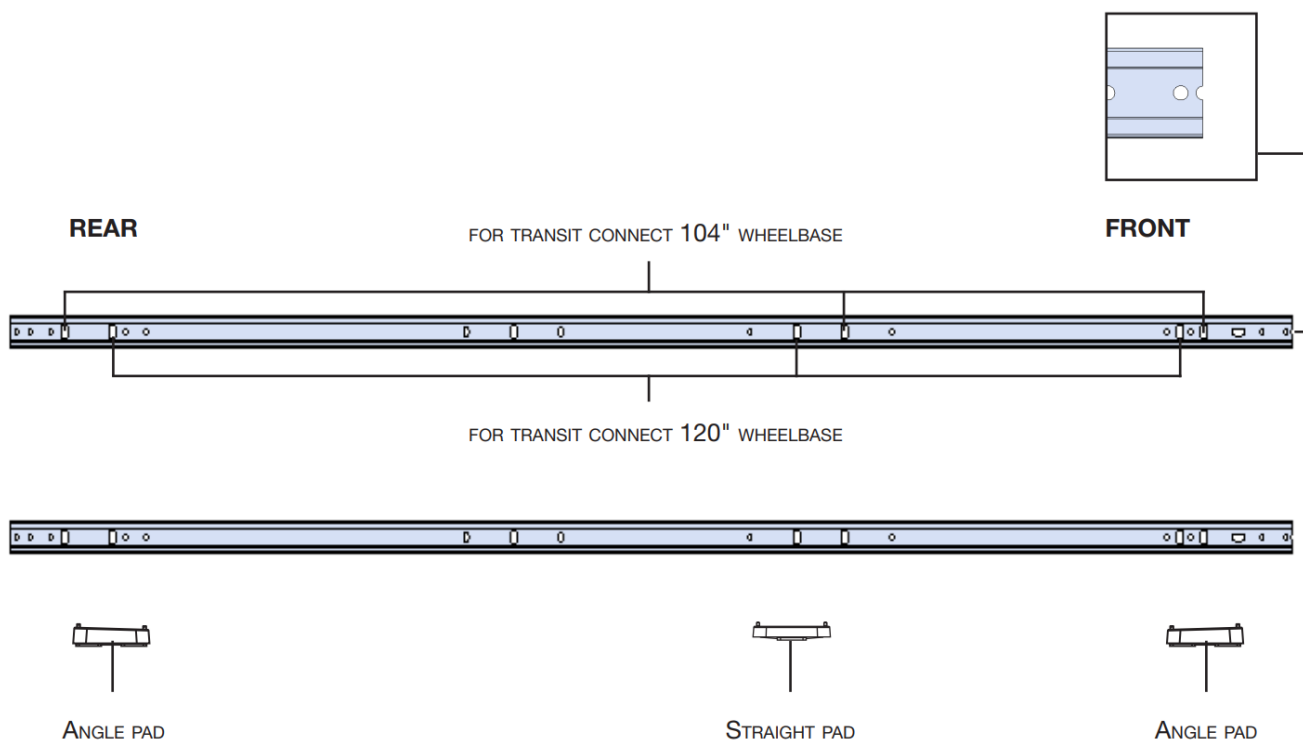
INSTALLATION GUIDE



Contents

- [1 Ladder Rack Mounting Kit for Transit Connect](#)
- [2 PHASE 1 – ASSEMBLY](#)
- [3 PHASE 2 – INSTALLATION](#)
- [4 Documents / Resources](#)
- [5 Related Posts](#)

Ladder Rack Mounting Kit for Transit Connect



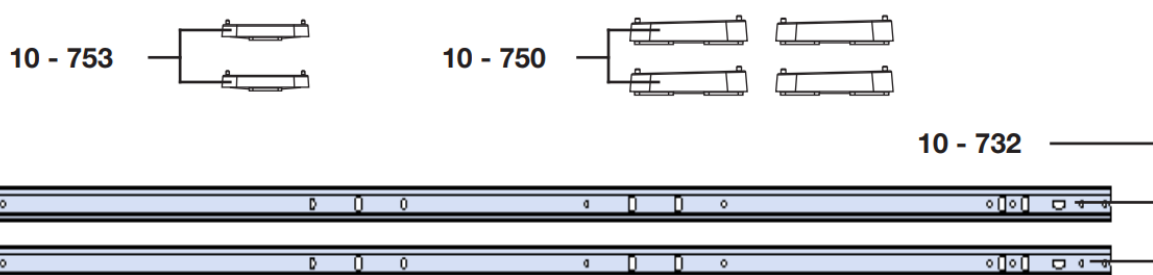
18-U0046 Mounting track

TransiT ConneCT LWB, TransiT ConneCT sWB

PHASE 1 – ASSEMBLY

1.1 SETUP






1.1.1 Verify all parts are present.



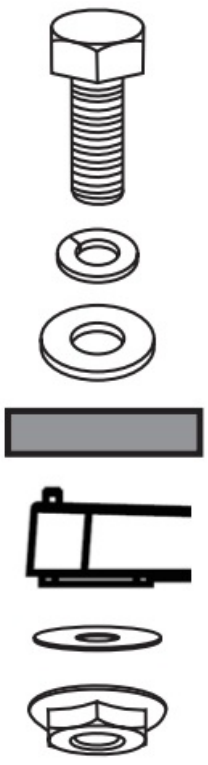
Verify all Parts are Present

Item No.	Description	Qty.
10-732	Mounting TraCk	2
10-750	Angle pad	4
10-753	Straight pad	2
96-1032	Customer insTaLL fasTener kiT	1

Verify all Parts are Present
Fastener Bags.

6x		# 90-004	Hex Bolt M8-1.25 x 50mm SS304
6x		# 94-172	Hex Serrated Nut 5/16" ZINC
6x		# 10-764	Neoprene Spacer 1/16" Thick
6x		# 98-117	Flat Washer 5/16"
6x		# 98-123	Lock Washer 5/16"

6x TransiT ConneCT

	#90-004 Hex Bolt M6 × 50mm
	#98-123 LoCk Washer
	#98-117 FLaT Washer
	MounTing TraCk
	Pad
	#10-764 Neoprene spaCer
	#94-172 Hex serraTed nuT

PHASE 2 – INSTALLATION

2.1 INSTALLATION

2.1.1 Install the mounting track with pads.

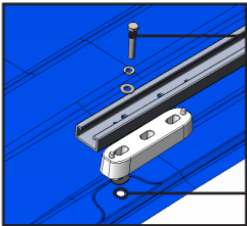
Transit Connect 104" Wheelbase

NOTE:

- Slide stud plate on both ends of the mounting track before installing the mounting track.
- Slide 3 stud plates if you have 3 barracks.



NOTE: • *APPLY SILICONE AROUND EACH HOLE, AND BOLT*
THEN FASTEN THE TRACKS TO THE ROOF.
• USE THE 1ST, 3RD, AND 4TH HOLES OF THE ROOF
FROM THE REAR.



SILICONE

REAR

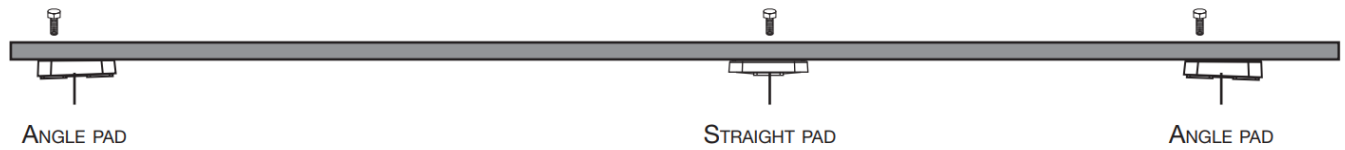
TOP VIEW

SHOWING WHAT HOLES YOU WILL USE



SIDE VIEW

SHOWING THE POSITION OF THE PADS

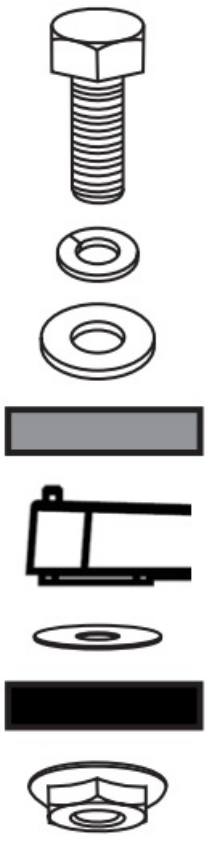


TOOLS

- Cordless Impact
- 13mm Socket
- Silicone

NOTE: use The 1st, 3rd, and 4th holes of The roof from The rear.

FASTENERS USED 6x

	#90-004 Hex Bolt M6 × 50mm
	#98-123 LoCk Washer
	#98-117 Flat Washer
	Mounting TraCk
	Pad
	#10-764 Neoprene spaCer
	Roof
	#94-172 Hex serraTed nuT

Transit Connect 120" Wheelbase

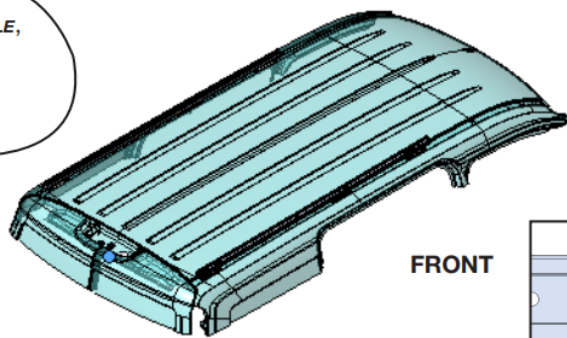
NOTE:

- Slide stud plate on both ends of the mounting track before installing the mounting track.
- Slide 3 stud plates if you have 3 barracks.



NOTE:

- **APPLY A BEAD OF SILICONE AROUND EACH HOLE,** THEN FASTEN THE TRACKS TO THE ROOF.
- **USE THE 1ST, 3RD, AND 4TH HOLES OF THE ROOF FROM THE REAR.**



REAR

FRONT

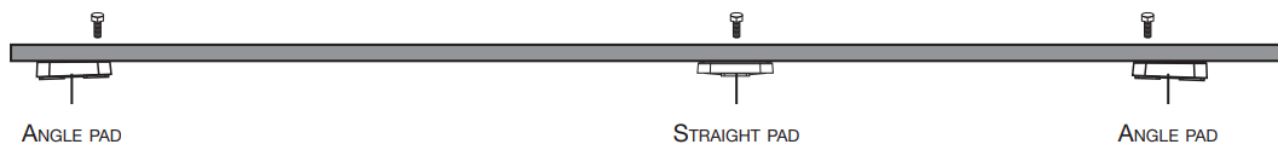
TOP VIEW

SHOWING WHAT HOLES YOU WILL USE



SIDE VIEW

SHOWING THE POSITION OF THE PADS

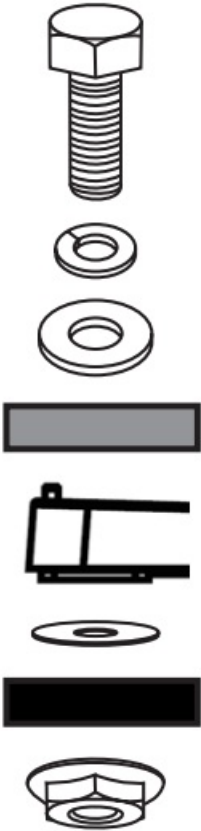


TOOLS

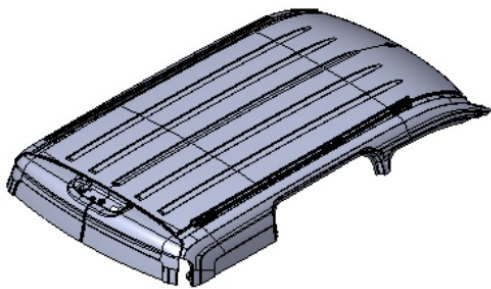
- Cordless Impact
- 13mm Socket

NOTE: use The 1st, 3rd, and 4th holes of The roof from The rear.

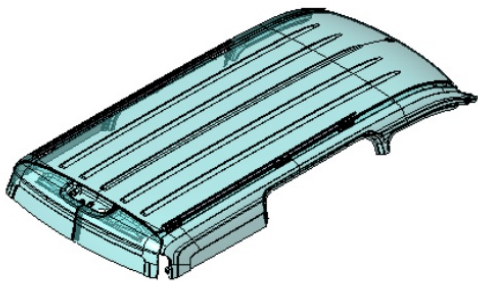
FASTENERS USED 6x

	#90-004 Hex Bolt M6 × 50mm
	#98-123 LoCk Washer
	#98-117 FLaT Washer
	MounTing TraCk
	Pad
	#10-764 Neoprene spaCer
	Roof
	#94-172 Hex serraTed nuT

Transit connect 104" Wheelbase

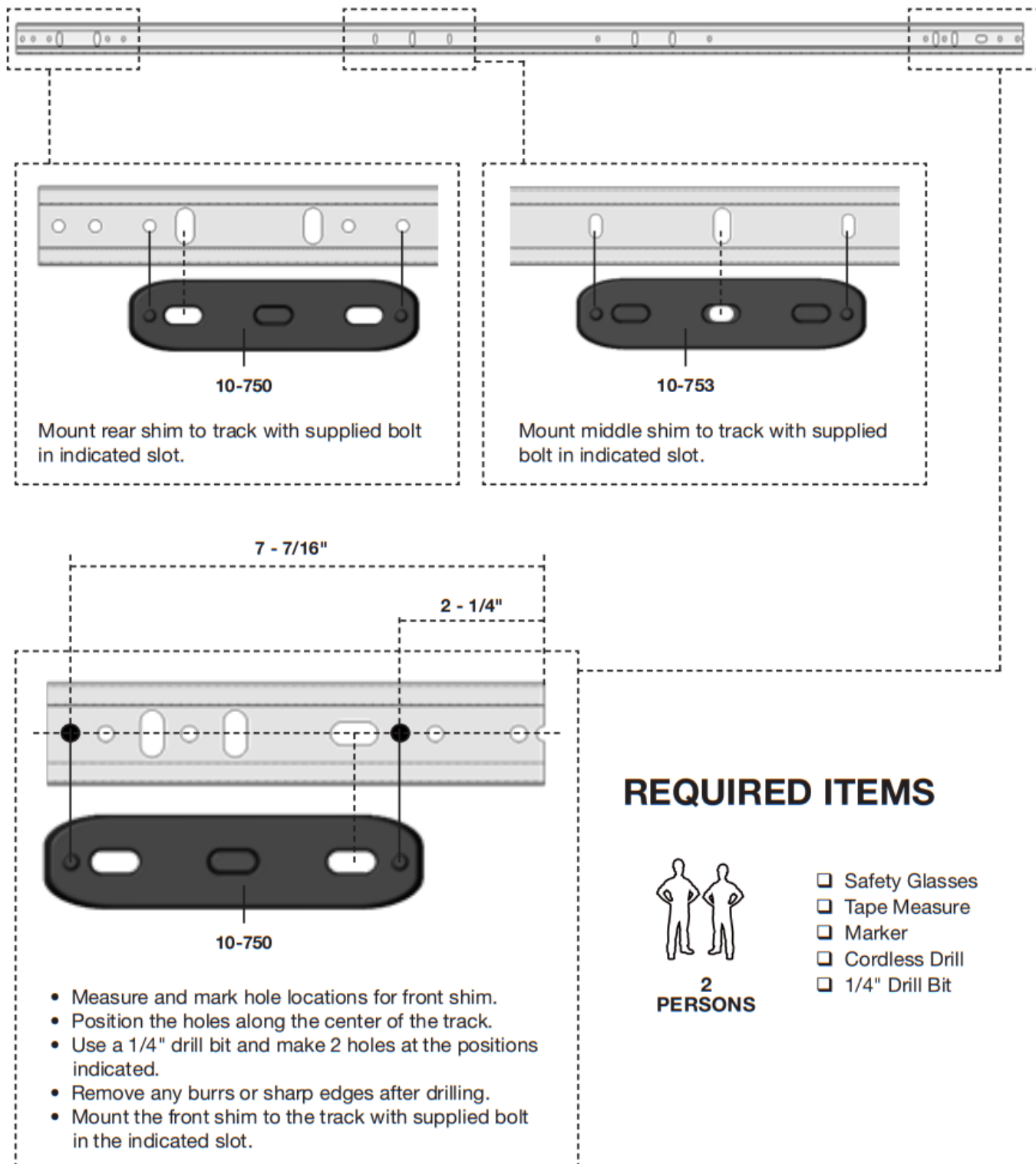


TRANSIT CONNECT 120" WHEELBASE



“Congratulations, you have successfully installed your Mounting Track on your vehicle! Thank you for doing business with us.”
 For any feedback or suggestions, you might have, please contact: cs@rangerdesign.com

procedure to modify the 18-u0046 mounting kit for nissan nv200



For technical support, contact us at 1-800-565-5321
18-U0046_NV Installation Guide | REV. A1

Documents / Resources

<p>INSTALLATION GUIDE</p> <p>18-U0046 Mounting Track</p> <p>RANGER</p>	<p>RANGER DESIGN Ladder Rack Mounting Kit for Transit Connect [pdf] Installation Guide</p> <p>Ladder Rack Mounting Kit for Transit Connect</p>
--	--

