

Range Industries R1T Rivian Badwater Rack System



Range Industries R1T Rivian Badwater Rack System Instruction Manual

[Home](#) » [Range Industries](#) » Range Industries R1T Rivian Badwater Rack System Instruction Manual 

Contents

- [1 Range Industries R1T Rivian Badwater Rack System](#)
- [2 Specifications](#)
- [3 Installation Steps](#)
- [4 FAQ](#)
- [5 Documents / Resources](#)
 - [5.1 References](#)



Range Industries R1T Rivian Badwater Rack System



Rivian R1T Rack Install Instructions

Begin by unpacking all components and making sure no parts are missing. If any parts are missing, please contact sales@range-industries.com and we will remedy the situation ASAP. See list of all parts below:

Specifications

- 4X 6061-T6 Aluminum Rack Uprights



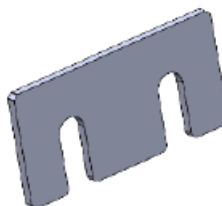
- 2X 6063-T6 Aluminum Crossbars



- 4X Stainless Steel u-nuts



- 8X 6061-T6 aluminum shims



- 16X 5/16"-18 x 1" stainless steel bolts



Install Notes:

- Use blue (medium) Loctite or equivalent thread locker on all bolts

Required Tools:

- 3/16" hex key or 3/16" hex bit with ratcheting wrench
- Torque wrench

Installation Steps

1. Begin by inserting the foam backed stainless steel u-bolts into the anchor points on the bed rail.



2. Next place the black upright over the anchor point (with silver logo plate facing outwards) and move around till it locates properly onto the anchor point. Make sure the black foam cosmetic gasket is installed on the underside of the upright before install. Use two of the supplied 5/16"-18 x 1" stainless steel bolts to mount upright to the anchor point. We recommend the use of blue Loctite on all hardware for this install. Snug the bolts down, but do not fully tighten at this point. Repeat this for the other 3 uprights.



3. Next place one of the supplied crossbars into the pockets on a pair of the uprights. Please note that the crossbar will be undersized. Slide 2 of the supplied shims between the crossbar and the upright on one side. Insert 2x of the 5/16"-18 x 1" stainless steel bolts (use of blue Loctite recommended) through the upright and into the tapped holes in the end of the crossbar, snug the bolts. Next go to the other side and insert shims as required to remove the gap between the crossbar and the upright. Insert 2x of the 5/16"-18 x 1" stainless steel bolts (use of blue Loctite recommended) through the upright and into the tapped holes in the end of the crossbar and snug bolts. Double check to make sure gaps are closed up. If gaps are still present add or remove shims to ensure proper fitment. Please note that bolts attaching the upright to the crossbar do not need to be fully removed in order to insert shims. Finally, tighten all bolts to 12.5 ft-lbs (150 in-lbs). Repeat this procedure for the other crossbar.

Bolt Check

After driving with rack installed for 25 miles, re-check hardware to ensure none of the hardware has loosened.



FAQ

What should I do if I find parts missing upon unpacking?

Contact sales@range-industries.com for assistance with missing components.

Is it necessary to fully tighten bolts during initial installation?

No, initially snug the bolts down without fully tightening; final tightening will be done after all components are in place.

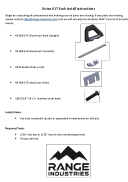
What is the torque specification for the bolts?

Tighten all bolts to 12.5 ft-lbs 150 in-lbs.

How often should I check the hardware after installation?

Perform a bolt check after driving with the rack installed for 25 miles to ensure hardware has not loosened.

Documents / Resources

	<p>Range Industries R1T Rivian Badwater Rack System [pdf] Instruction Manual R1T Rivian Badwater Rack System, R1T, Rivian Badwater Rack System, Badwater Rack System, Rack System, System</p>
---	---

References

- [User Manual](#)

[Manuals+](#), [Privacy Policy](#)

This website is an independent publication and is neither affiliated with nor endorsed by any of the trademark owners. The "Bluetooth®" word mark and logos are registered trademarks owned by Bluetooth SIG, Inc. The "Wi-Fi®" word mark and logos are registered trademarks owned by the Wi-Fi Alliance. Any use of these marks on this website does not imply any affiliation with or endorsement.