



## RAM MOUNT RMR-INS-BM-L1 Leg Mount for Xbox Adaptive Controller Instruction Manual

[Home](#) » [RAM MOUNT](#) » RAM MOUNT RMR-INS-BM-L1 Leg Mount for Xbox Adaptive Controller Instruction Manual 

### Contents

- [1 RAM MOUNT RMR-INS-BM-L1 Leg Mount for Xbox Adaptive Controller](#)
- [2 Product Information](#)
- [3 Product Usage Instructions](#)
- [4 Assembly Instructions for RAM® Body Mount for Legs](#)
- [5 Documents / Resources](#)
  - [5.1 References](#)
- [6 Related Posts](#)



### RAM MOUNT RMR-INS-BM-L1 Leg Mount for Xbox Adaptive Controller



### Product Information

The product is a Body Mount Base with Buckle Strap designed and manufactured by National Products, Inc. It is used to mount devices such as smartphones, tablets, and GPS devices to a vehicle or any other flat surface. The product comes with a male buckle and two buckle straps (B) that can be routed through the slots of the Body Mount Base (A). The product is not to scale.

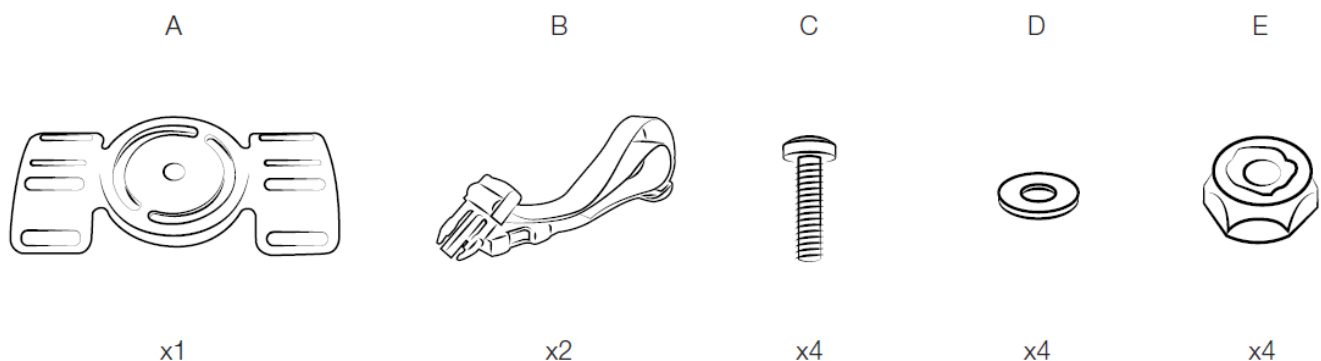
## Product Usage Instructions

1. Remove the male buckle from the Buckle Strap (B), and route it through the slots of the Body Mount Base (A) as shown in the diagram.
2. Re-route the Buckle Strap (B) through the male buckle as shown in the diagram.
3. Repeat the above step for the second Buckle Strap (B).
4. Route any excess strap back through the slots of the Body Mount Base (A).
5. The product should now be ready to mount your device. Ensure that you do not install this product near or over an airbag deployment area or in a location that obstructs the driver's vision or interferes with vehicle operation. National Products, Inc does not assume responsibility or liability for any such personal injury, death or property damage.
6. For more mounting options, visit [rammount.com](http://rammount.com).

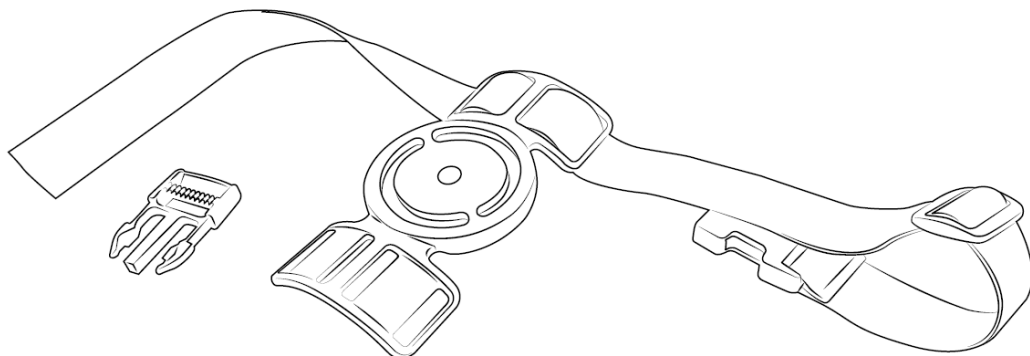
## Assembly Instructions for RAM® Body Mount for Legs

### Part Index

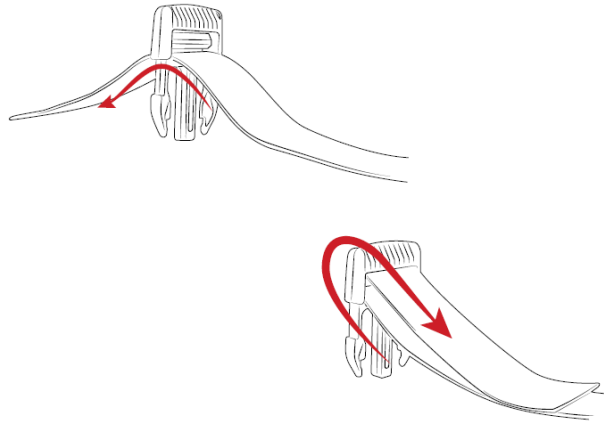
\*not to scale



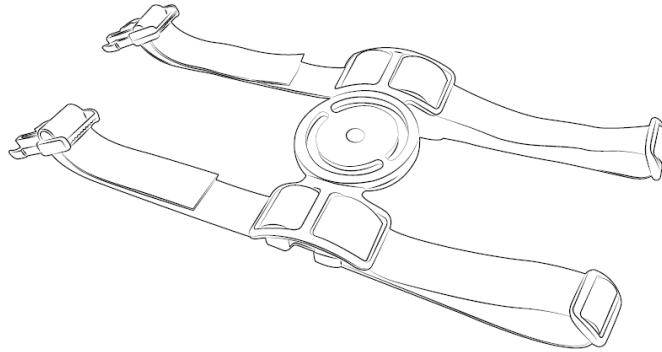
1. Remove male buckle from (B) Buckle Strap, and route through slots of (A) Body Mount Base as shown.



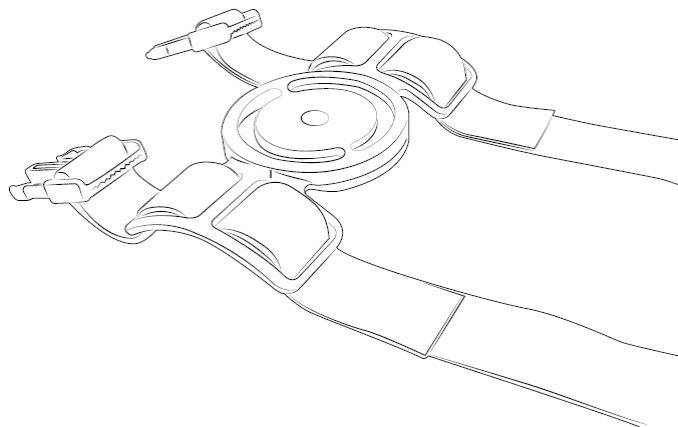
2. Re-route (B) Buckle Strap through the male buckle as shown.



3. Repeat for second (B) Buckle Strap.



4. Route any excess strap back through the (A) Body Mount Base slots.



5. Use (C) Screws, (D) Washers and (E) Nuts to connect any RAM® holder or mounting components.

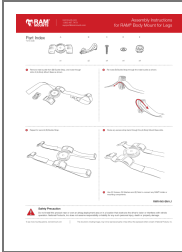
### **Safety Precaution**

Do not install this product near or over an airbag deployment area or in a location that obstructs the driver's vision or interferes with vehicle operation. National Products, Inc does not assume responsibility or liability for any such personal injury, death or property damage.

To see more mounting options, visit [rammount.com](http://rammount.com)

This document, including images, may not be reproduced partly or fully without the expressed written consent of National Products, Inc.

### **Documents / Resources**



[RAM MOUNT RMR-INS-BM-L1 Leg Mount for Xbox Adaptive Controller](#) [pdf] Instruction Manual  
RMR-INS-BM-L1, RMR-INS-BM-L1 Leg Mount for Xbox Adaptive Controller, Leg Mount for Xbox Adaptive Controller, Xbox Adaptive Controller, Adaptive Controller

References

-  [RAM Mounts](#)