



# RainPoint TWG009BW Smart Irrigation Bluetooth Gateway User Manual

[Home](#) » [RainPoint](#) » RainPoint TWG009BW Smart Irrigation Bluetooth Gateway User Manual

## Contents [ [hide](#) ]

- [1 RainPoint TWG009BW Smart Irrigation Bluetooth Gateway](#)
- [2 Production Overview](#)
- [3 Product Specifications](#)
- [4 Main Function](#)
- [5 Installations](#)
- [6 Connect Bluetooth Smart Irrigation Timer](#)
- [7 Basic information about the equipment](#)
- [8 Version Upgrade](#)
- [9 Manual Operation](#)
- [10 Tips for Operation](#)
- [11 Warranty & Warning](#)
- [12 Documents / Resources](#)
  - [12.1 References](#)
- [13 Related Posts](#)

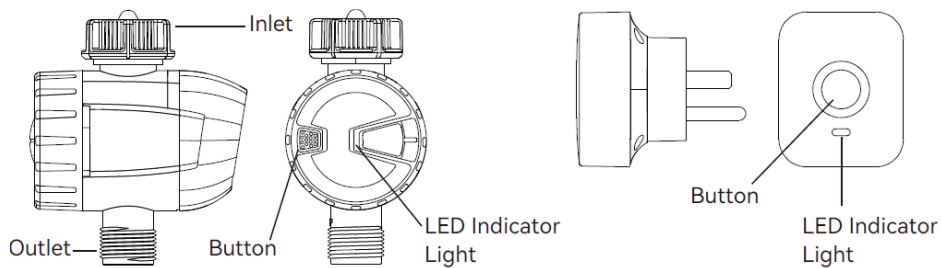


**RainPoint TWG009BW Smart Irrigation Bluetooth Gateway**



## Production Overview

## Product Appearance



## Product Specifications

Working Pressure	0.5bar-8bar (7.25 psi-116 psi)
Working Temperature	5L/Min-35L/Min
Waterproof	IP54
Timer Power	3 AAA alkaline batteries (not included)
Inlet	NH(US) for 3/4" faucet / hose BSP(EU) for 1" or 3/4" faucet / hose
Outlet	For 3/4" standard garden hose

## Main Function

- Manually ON/OFF the water timer WIFI
- With 2 schedule types: Normal Schedule and Cycle & Soak
- Weather delay 24/48/72 hours
- Low power indicator
- Set and check irrigation schedule through smart phone APP, connecting with
- Irrigation history track to avoid operation error
- Built-in filter

## Installations

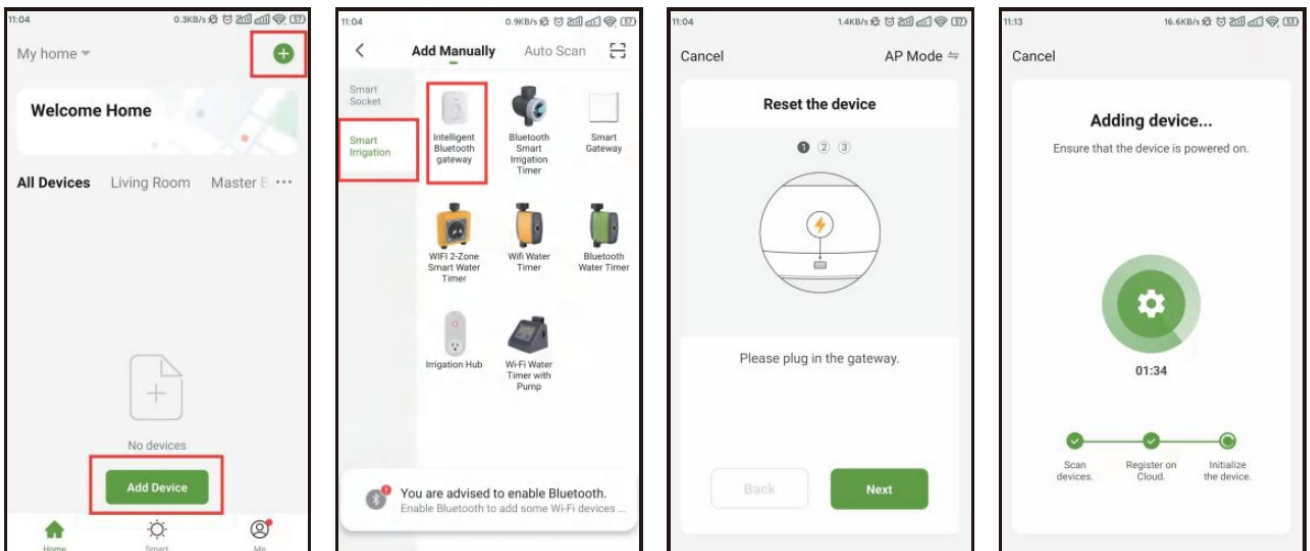
## Device connection



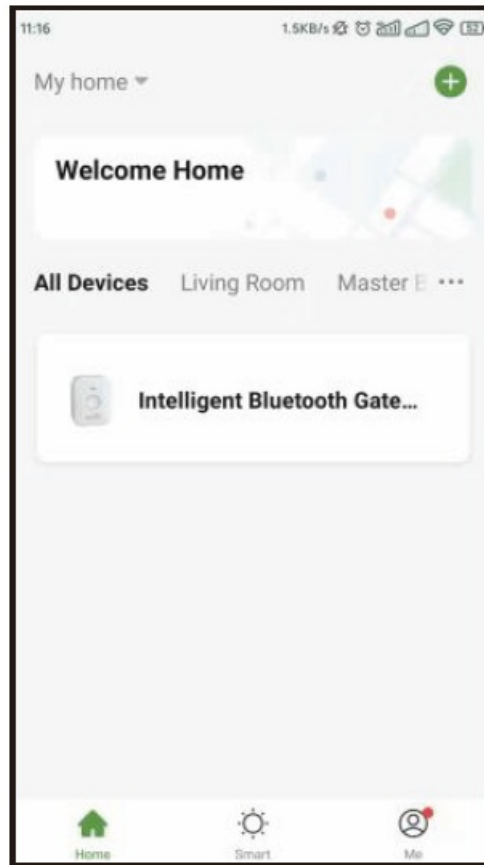
1. Search for RainPoint on Google Play or App Store or scan the QR code to download the RainPoint APP. Follow the prompts to register a RainPoint account or log in with an existing account.



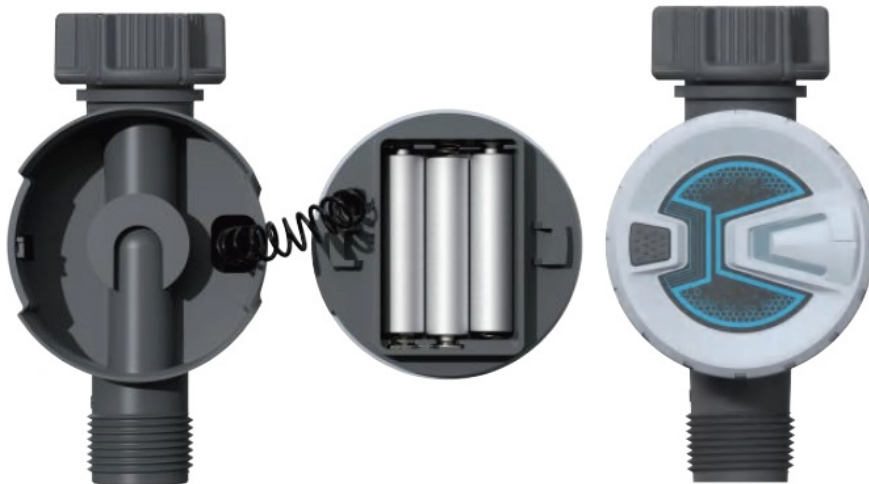
2. Plug the TWG009BW gateway into an outlet near the router and wait 10 seconds for the device initialization to complete. The blue indicator light is always on and the red indicator light is blinking slowly, which means it enters the gateway pairing state.
3. Open RainpointAPP, click "+" button on the top right corner, select "Add Device", then find and select "Smart Irrigation" under the category "Intelligent Bluetooth Gateway". Then follow the instructions on the APP page to complete pairing.



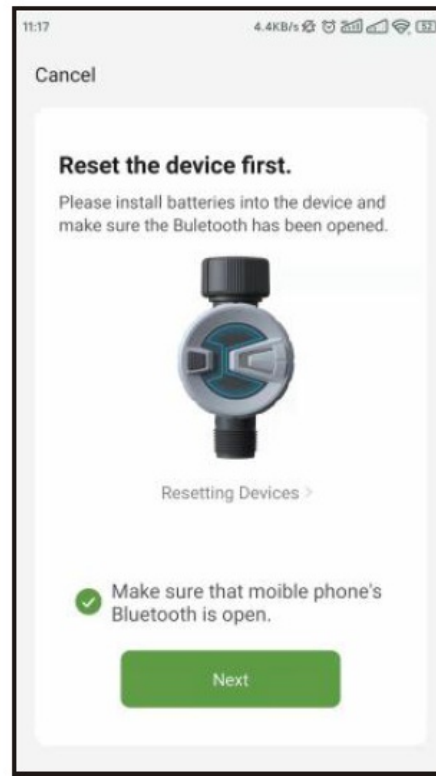
4. Once the connection is complete, the paired devices will be displayed on the home page.



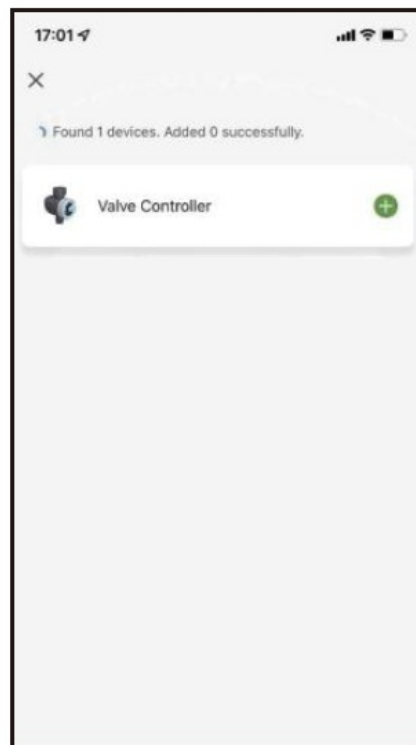
### Connect Bluetooth Smart Irrigation Timer



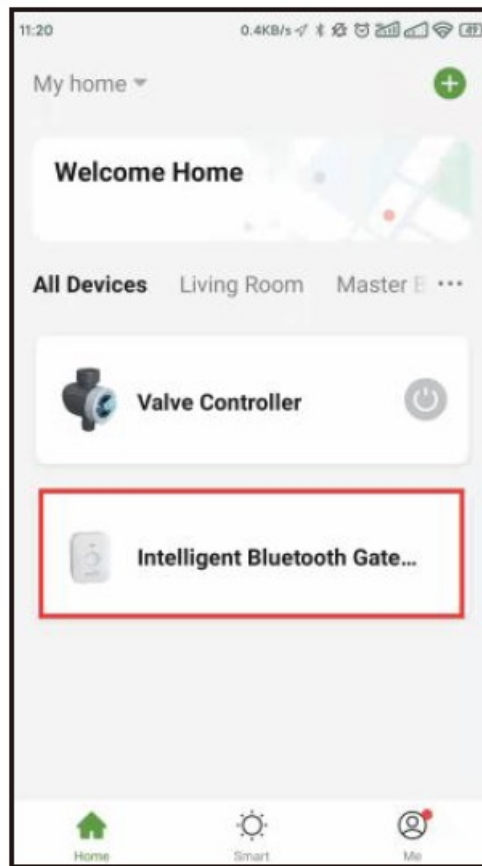
1. Unscrew the Bluetooth Smart Irrigation Timer (as shown) and load 3 AAA batteries. After installation, press and hold the timer button until the blue LED flashes rapidly which means the device is ready to connect
2. Please hold the button on the timer for 6 seconds to ensure that the blue light flashes ;~ Reset the device first. quickly. Select "Add Device" and then find and select "Bluetooth Smart Irrigation Timer" under the "Smart Irrigation" category. Confirm the prompt and click Next to enter pairing search.



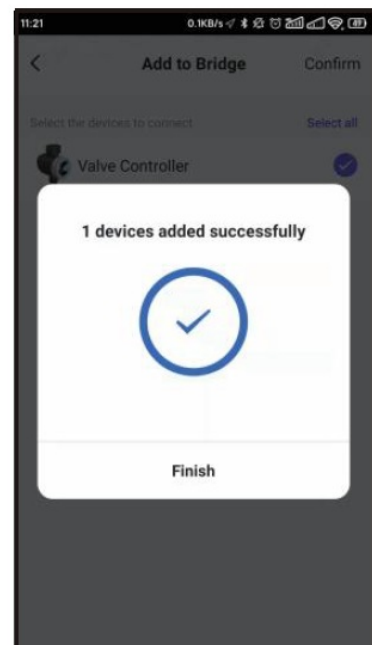
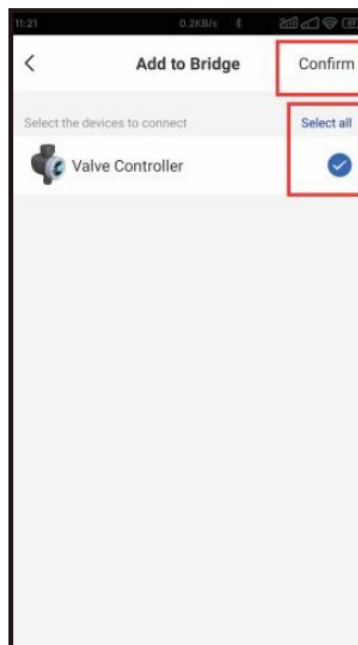
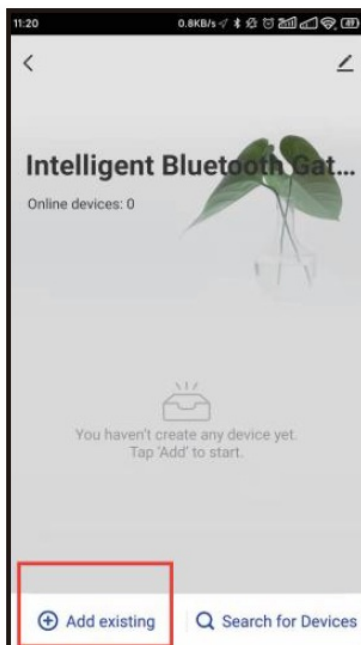
3. Click on the right side of the device to add the device, and then click "Finish" for final confirmation after the device is successfully added.



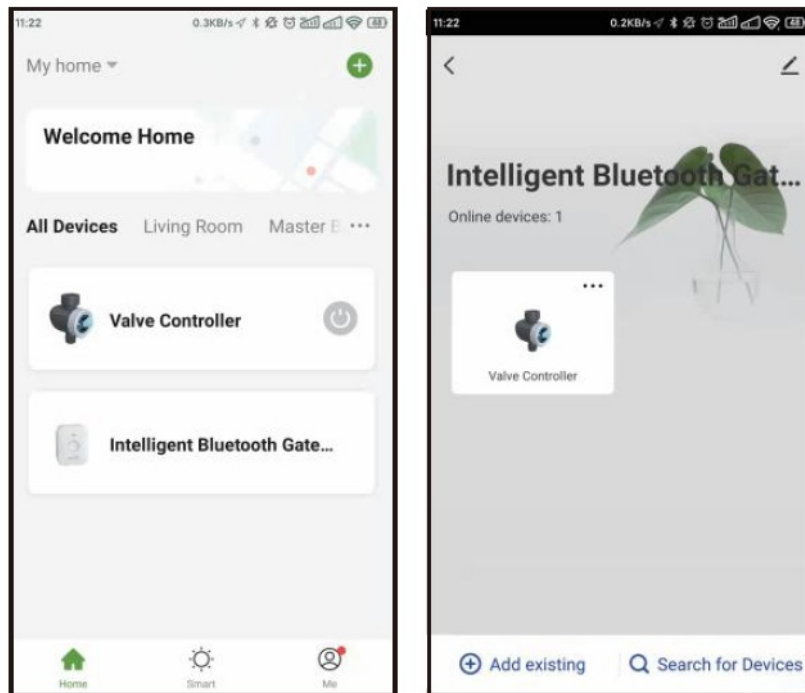
**Connect the gateway to the Bluetooth Smart Irrigation Timer**



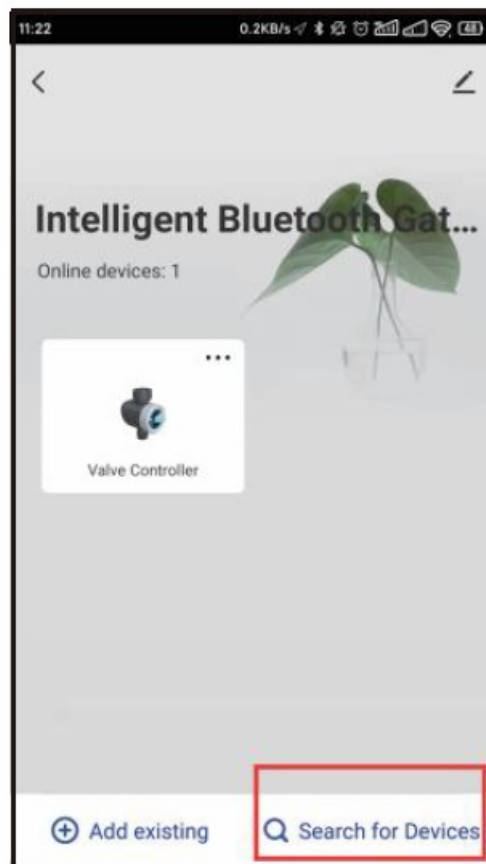
1. Once the connection is complete, the paired devices will be Gateway to enter the device's details homepage.
2. Click "Add existing", select the device and click "Confirm" to go to the next step of pairing.



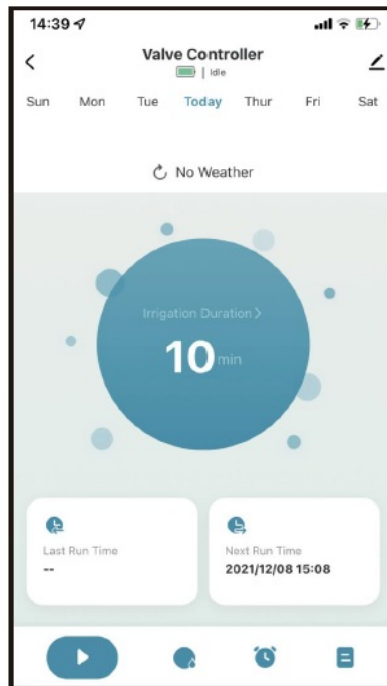
3. Once the connection is complete, the paired devices will be displayed on the -tooth Gateway to enter the device's details homepage.



## Basic information about the equipment



1. By selecting "Search for Devices", you can also associate more sub-devices.
2. Click the Bluetooth irrigation timer valve to enter the device details page. This page displays the following information: status, device status, weather information, irrigation time, last run time, next run time.



3. At the bottom, there is an operating panel with several options: Manual button, Weather Delay, Schedule Setting, Irrigation History.



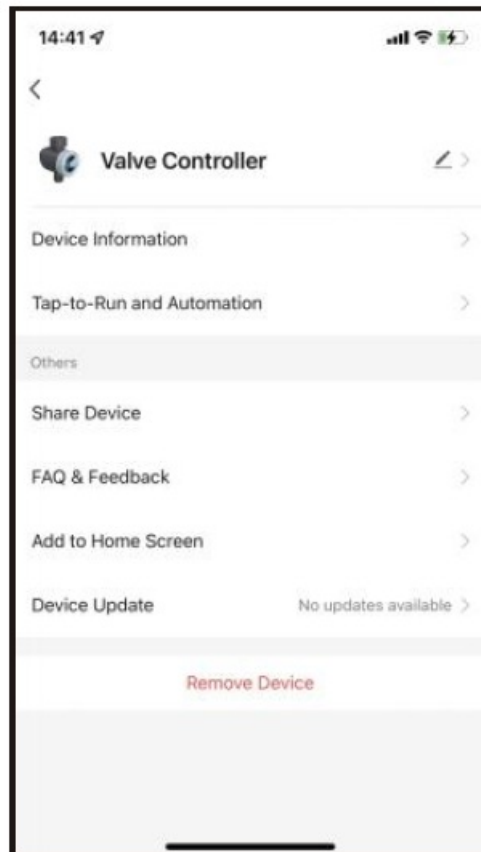
- Manual Button for instant watering need.



- Weather Delay for 24/48/72hours.
- Schedule Setting with normal schedule and cycle & soak schedule for options.
- Irrigation history for irrigation track and avoid false operation

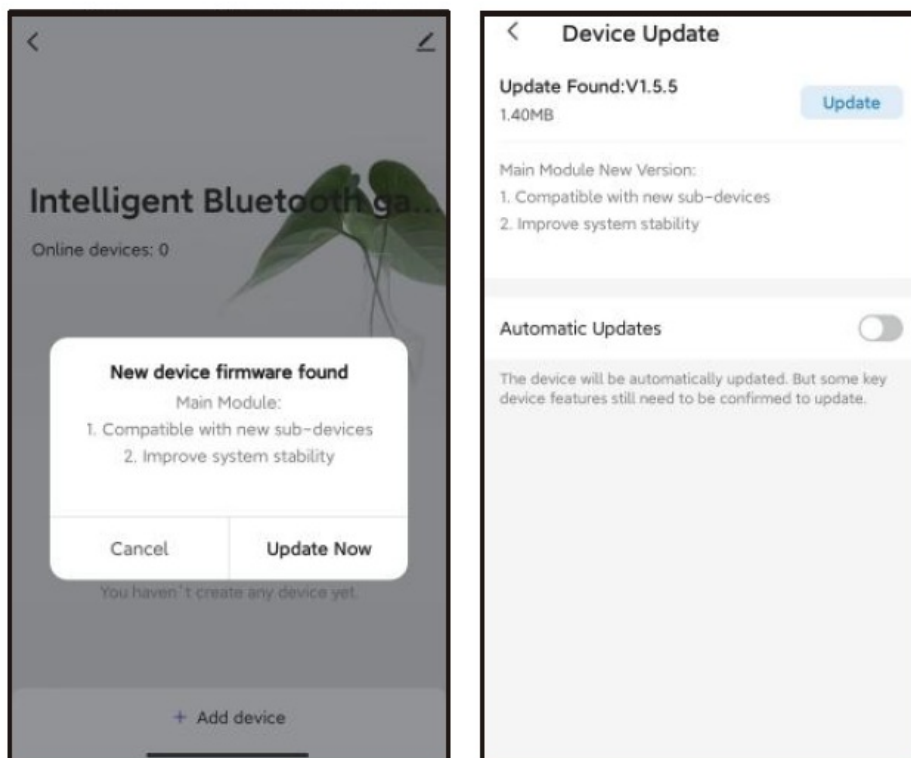
4. Press the button on the top right corner to enter device information page.





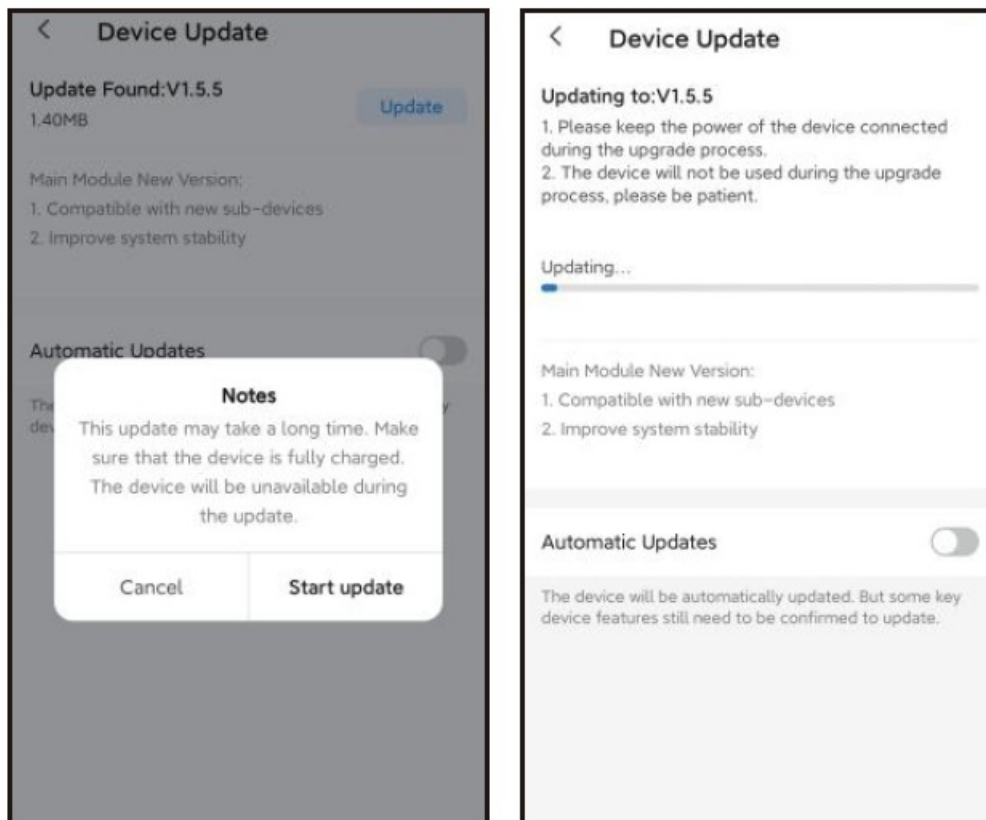
## Version Upgrade

1. Enter the gateway operation interface, if there is a version update, the system will automatically push the update version notification

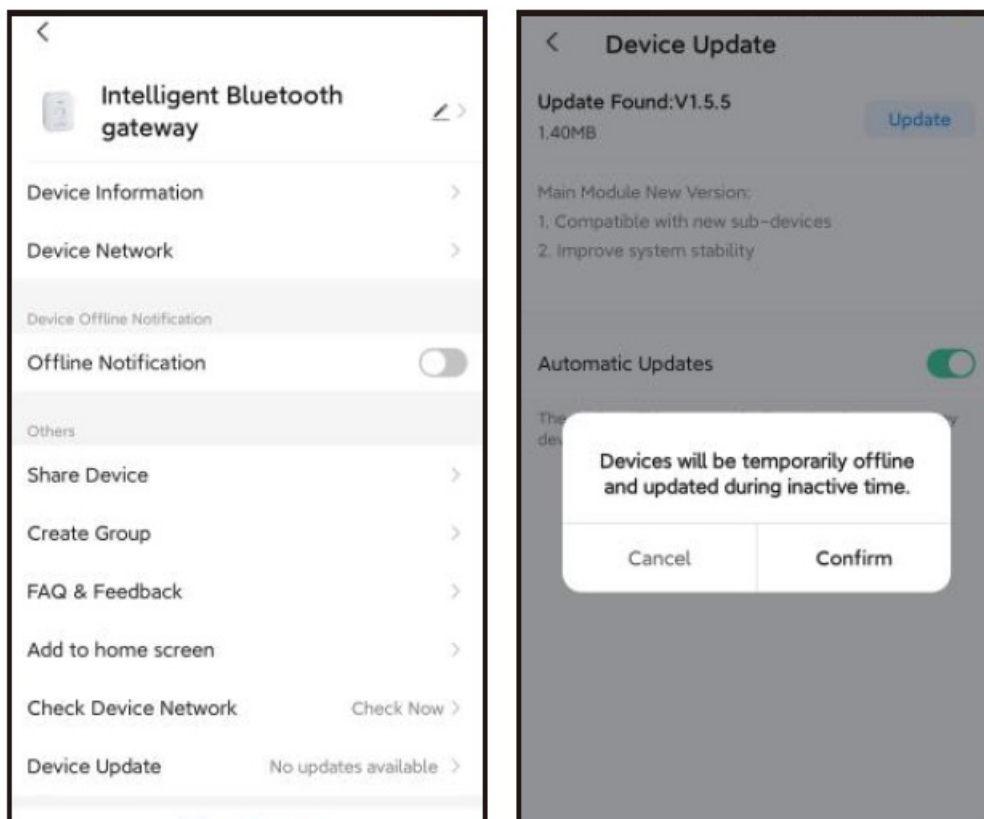


2. Click "Update Now" to enter the update version interface. The version number of this update will be displayed here. Please click "Update" again.
3. This update may take a long time. Make sure that the device is fully charged.

4. The device will be unavailable during the updated. The progress bar can check the update progress.



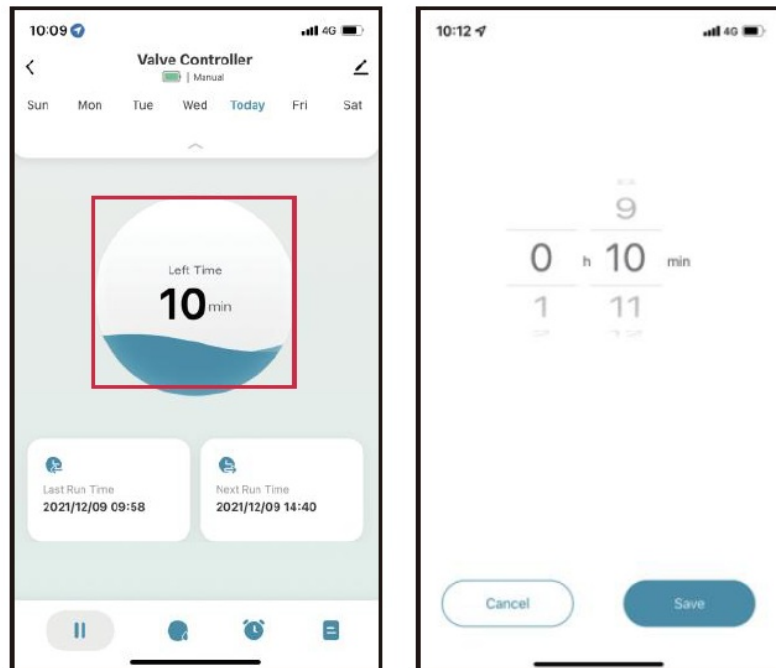
5. If the device has been upgraded to the latest version, the product information page will display “No update available”.





6. In addition, the gateway automatic update function can be turned on, and the device will be temporarily offline and updated during inactive time.
7. When the gateway is upgraded, please remember to upgrade the controller version together. Click to enter the

controller page, the system will push the same upgrade notification, please repeat the above actions.

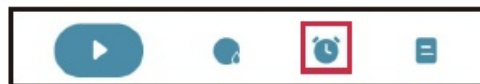
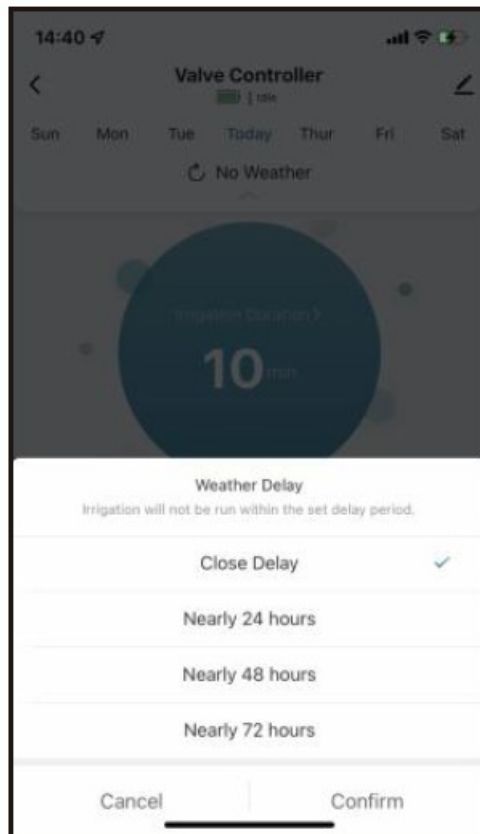
## Manual Operation



Manual mode: Click the  to manually turn ime is 10 mins.Click the “” to manually turn Tap the central circle to set manual watering time, from 1 min to 24 hours.

## Weather Delay

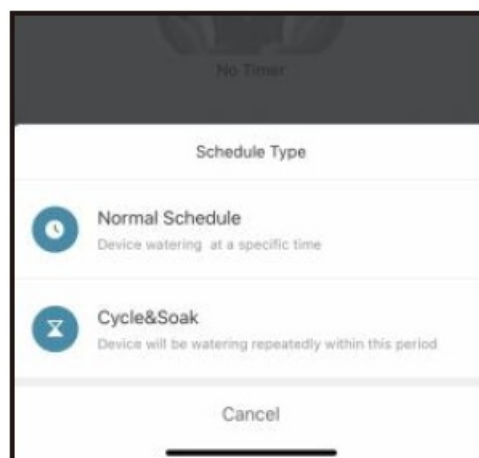
Tap the “Weather Delay” to enable the rain delay function. The weather delay can set with 24H, 48H, 72H and closed delay.



## Schedule and Settings

### Schedule Type

On the schedule page, after select button, there are two types for selection: Normal type and Cycle & Soak type.



Cycle & Soak: means the device will run the watering schedule repeatedly in this period.

### Schedule Settings

**Add Timer**  
Device watering at a specified time

Start Time	End Time
12	38
13	39
<b>14</b>	<b>40</b>
15	41
16	42

Irrigation Duration Please Select >

☒ Weekdays To Water

Sun Mon Tue Wed Thur Fri Sat

Save

(Normal Type)

**Add Cycle Timer**  
Cycle and Soak

Start Time	End Time
8	27
9	28
<b>10</b>	<b>29</b>
11	30
12	31

Sun Mon Tue Wed Thur Fri Sat

**Cycle&Soak**  
During period,Cycle&Soak breaks watering down to multiple cycles to give the soil time to soak the water in for efficiency.

Cycle Duration Please Select >

Soak Duration Please Select >

Save

(Cycle & Soak Type)

Click and choose the schedule type you need and to water, and save the all settings. irrigation, the cycle duration and soak duration. \*\*\*Remark\*\*\* The minimum period cannot be greater than the total time period schedules overlap, causing plans fail of setting.

**Timer**

**Normal Schedule**

PM 2:40  
Irrigation Duration:20min  
Work Days

**Cycle&Soak**

AM 10:38 - AM 11:38  
Cycle&Soak: Run 30min Soak 1min  
Mon, Wed, Fri

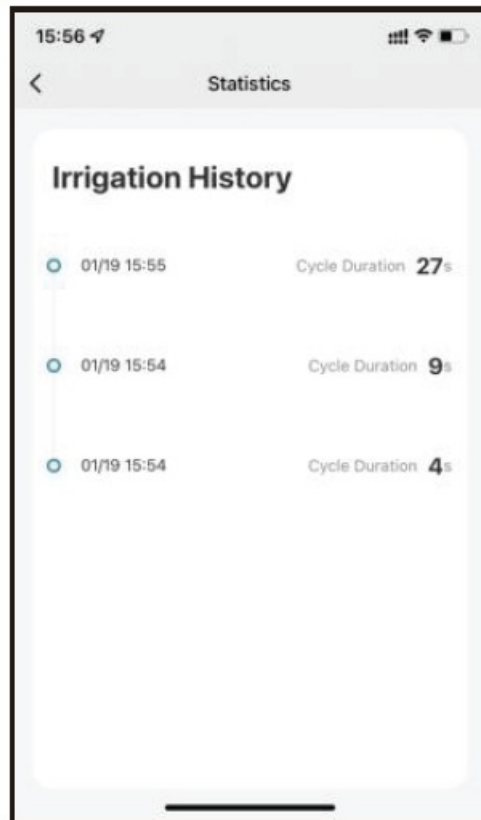
PM 7:42 - PM 9:44  
Cycle&Soak: Run 1h Soak 10min  
Mon, Wed, Fri

+

When all the plans are set up, they will be displayed on the timer list. stop the plan directly.

### Irrigation History

Every irrigation plan will be recorded. It' s convenient for users to track the implementation of irrigation plans.



## Tips for Operation

1. Please make sure the smartphone is near the Bluetooth water timer when connecting or setting the watering plan. The best range for connection and operation is within 60 meters in the open area.
2. The watering timer will follow and perform the preset watering schedule after the application is set successfully, even if the phone is out off the best connecting range.
3. If you need to replace the battery for the timer, please go to the control page of the timer on the APP after replacing the battery so that the system can automatically activate the connection between the timer and the hub.
4. For a better experience, it is recommended to update the device version of the timer to the latest version before use. If there is a push to update the device version later, please upgrade to use the latest version to optimize and upgrade some functions.

## Warranty & Warning

### WARRANTY

The warranty aims for the problem of non-artificial damage and provides a one-year warranty from the date of leaving the factory.

### WARNING


1. Under freezing temperatures, timers should be removed from the faucet and stored indoors to avoid potential freezing damage.
2. Please clean filters regularly and replace if it is worn in order to prolong life of timer.

## Customer Support

If you find it difficult to set up and want to watch the setting tutorial video, please subscribe to our YouTube channel: RainPoint, or visit the link <https://rainpointus.com/pages/playlist>

If the app and the user manual don't have what you're looking for, and you need some help, please prepare the Model NO. and LOT NO. of your device and contact us before returning the products to the store. US Free Hotline: 1-833-3815659 Email: [service@rainpointus.com](mailto:service@rainpointus.com)  
Model NO.: xxxxxxxxxx (On the timer label)  
LOT NO.: xxxxxxxxxxxxxxxx (On the timer label)

## Documents / Resources

	<a href="#">RainPoint TTV102B, TWG009BW Bluetooth Smart Irrigation Timer plus Bluetooth Gateway</a> [pdf] User Manual TWG009BW, 2AWDBTWG009BW, Bluetooth Smart Irrigation Timer plus Bluetooth Gateway, Bluetooth Smart Irrigation Timer, Smart Irrigation Timer, Bluetooth Gateway, Smart Irrigation Timer Gateway, Timer Gateway, Irrigation Gateway, Gateway, TTV102B TWG009BW, TTV102B, TWG009BW
---	---

## References

- [RP Product Playlists – Rainpoint](#)