



# RainPoint TTV102B Bluetooth Smart Irrigation Timer + Bluetooth Gateway User Manual

[Home](#) » [RainPoint](#) » RainPoint TTV102B Bluetooth Smart Irrigation Timer + Bluetooth Gateway User Manual 

## Contents

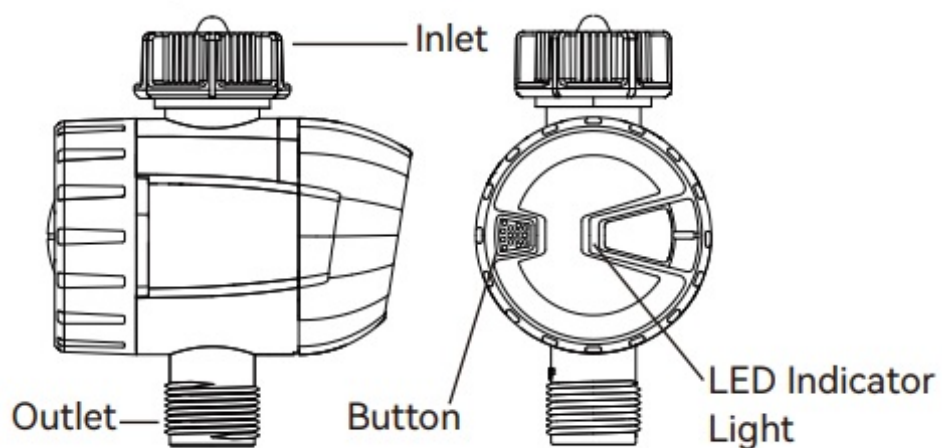
- 1 RainPoint TTV102B Bluetooth Smart Irrigation Timer + Bluetooth Gateway
- 2 Product Overview
- 3 Product Specification
- 4 Main Function
- 5 Installations
  - 5.1 Device connection Gateway
  - 5.2 Connect the gateway to the Bluetooth
  - 5.3 Basic information of the equipment
- 6 Version Upgrade
- 7 Manual Operation
- 8 Weather Delay
- 9 Schedule and Settings
- 10 Schedule Settings
- 11 Irrigation History
  - 11.1 Tips for Operation
  - 11.2 Warranty & Warning
  - 11.3 Customer Support
- 12 Documents / Resources
  - 12.1 References
- 13 Related Posts

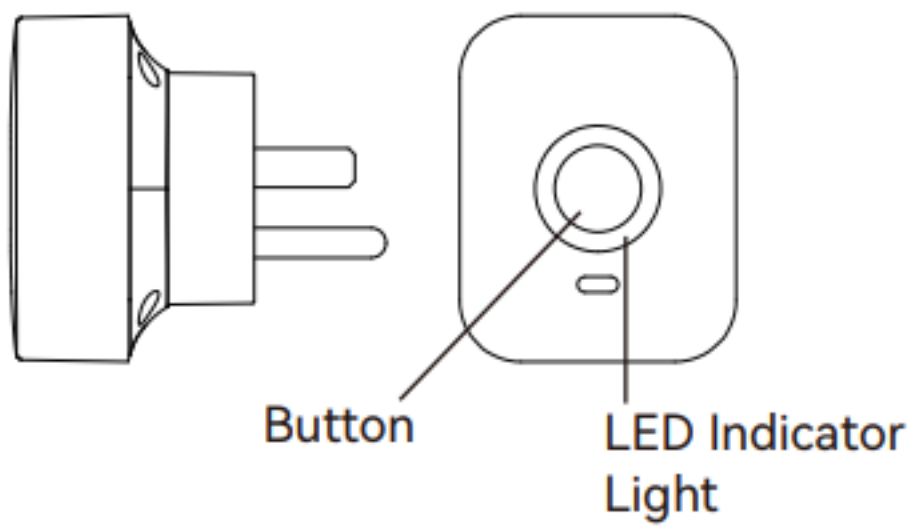




## Product Overview

TTV102B Bluetooth Smart Irrigation Timer





## Product Specification

Working Pressure	0.5bar-8bar (7.25 psi-116 psi)
Working Temperature	5L/Min-35L/Min
Waterproof	IP54
Timer Power	3 AAA alkaline batteries (not included)
Inlet	NH(US) for 3/4" faucet / hose
	BSP(EU) for 1" or 3/4" faucet / hose
Outlet	For 3/4" standard garden hose

## Main Function

- Manually ON/OFF the water timer
- With 2 schedule types: Normal Schedule and Cycle & Soak
- Weather delay 24/48/72 hours
- Low power indicator
- Build-in Filter

## Installations

### Device connection Gateway

### Connect To Smart Bluetooth

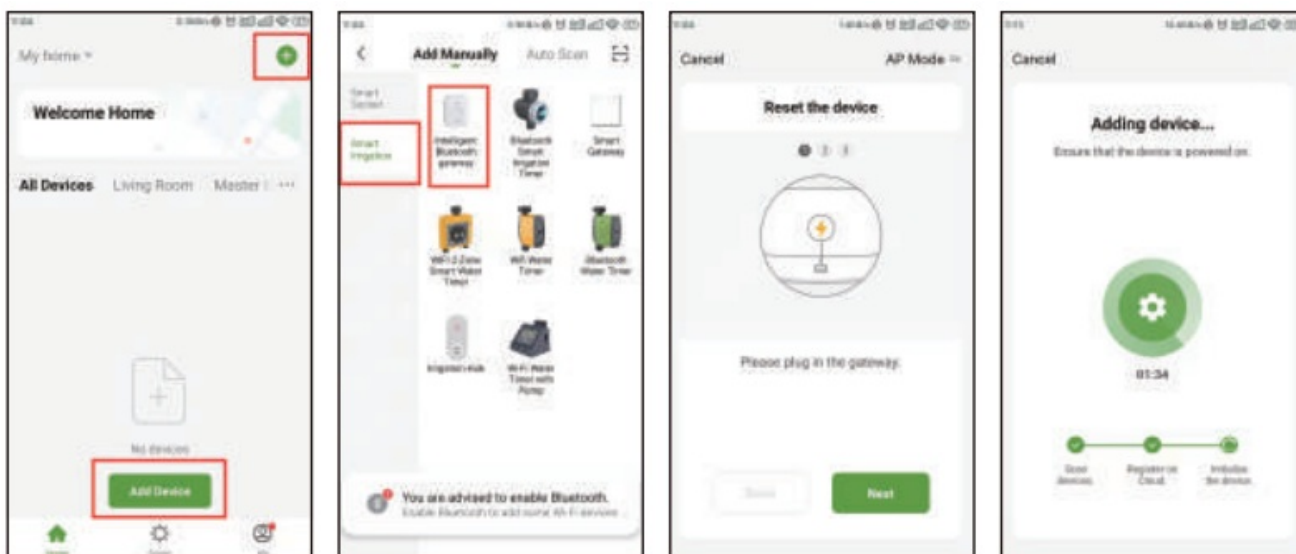
1. Search for RainPoint on Google Play or App Store or scan the QR code to download the RainPoint APP. Follow the prompts to register a RainPoint account or log in with an existing account.



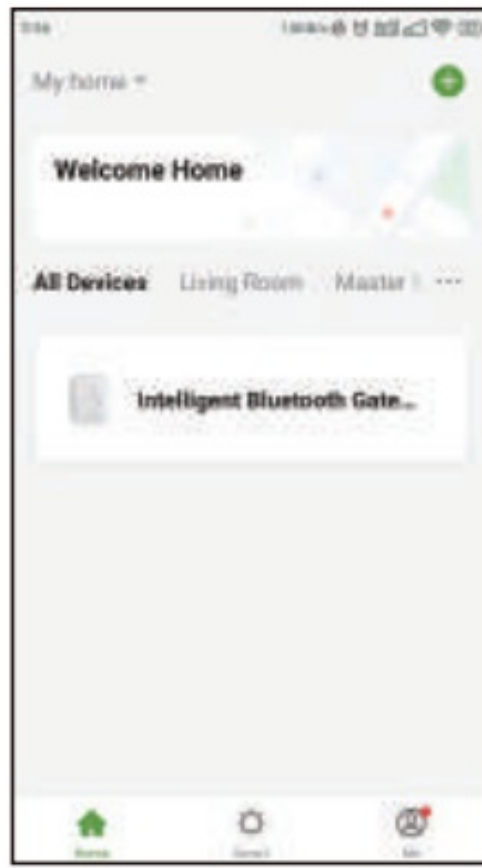
2. Plug the TWG009BW Bluetooth gateway into an outlet near the router and wait 10 seconds for the device initialization to complete. The blue indicator light is always on and the red indicator light is blinking slowly, which means it enters the gateway pairing state.



3. Open Rainpoint APP, click the "+" button on the top right corner, select Add Device", then find and select "Smart Irrigation" under the category "Intelligent Bluetooth Gateway". Then follow the instructions on the APP page to complete pairing.



4. Once the connection is complete, the paired devices will be displayed on the home page.

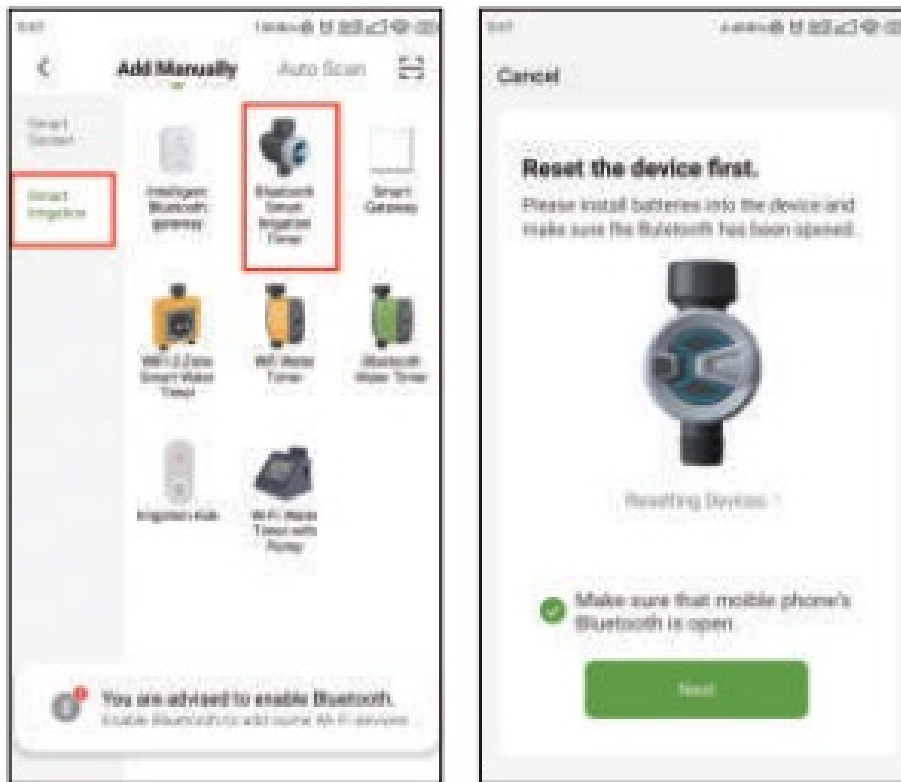


### Connect Bluetooth Smart Irrigation Timer

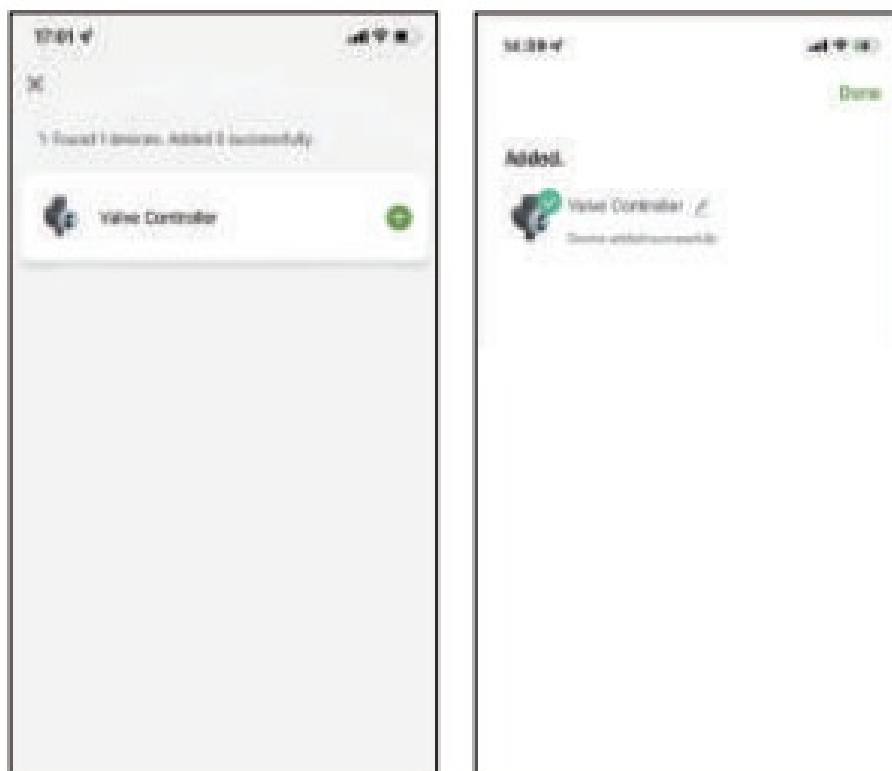
1. Unscrew the Bluetooth Smart Irrigation Timer (as shown) and load 3 AAA batteries. After installation, press and hold the timer button until the blue LED flashes rapidly, which means the device is ready to connect.



2. Please hold the button on the timer for 6 seconds to ensure that the blue light flashes quickly. Select "Add Device" and then find and select "Bluetooth Smart Irrigation Timer" under the "Smart Irrigation" category. Confirm the prompt and click Next to enter the pairing search.



3. Click "on the right side of the device, and then click "Finish" for final confirmation after the device is successfully added.

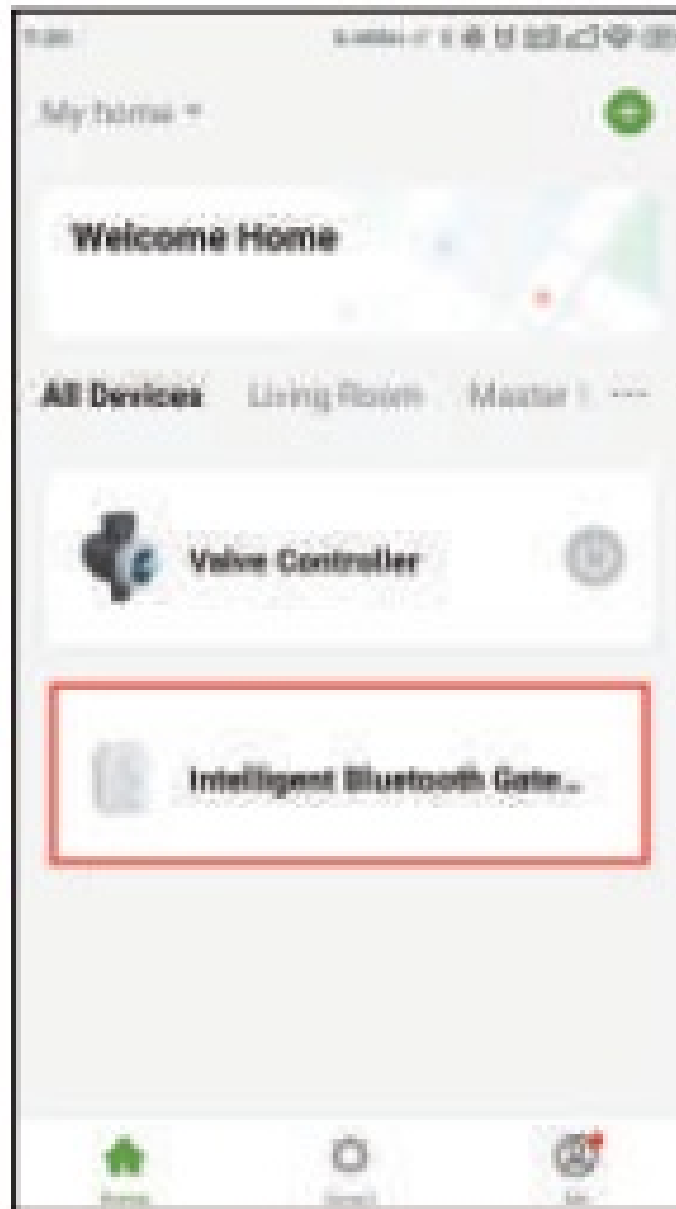


**Connect the gateway to the Bluetooth**

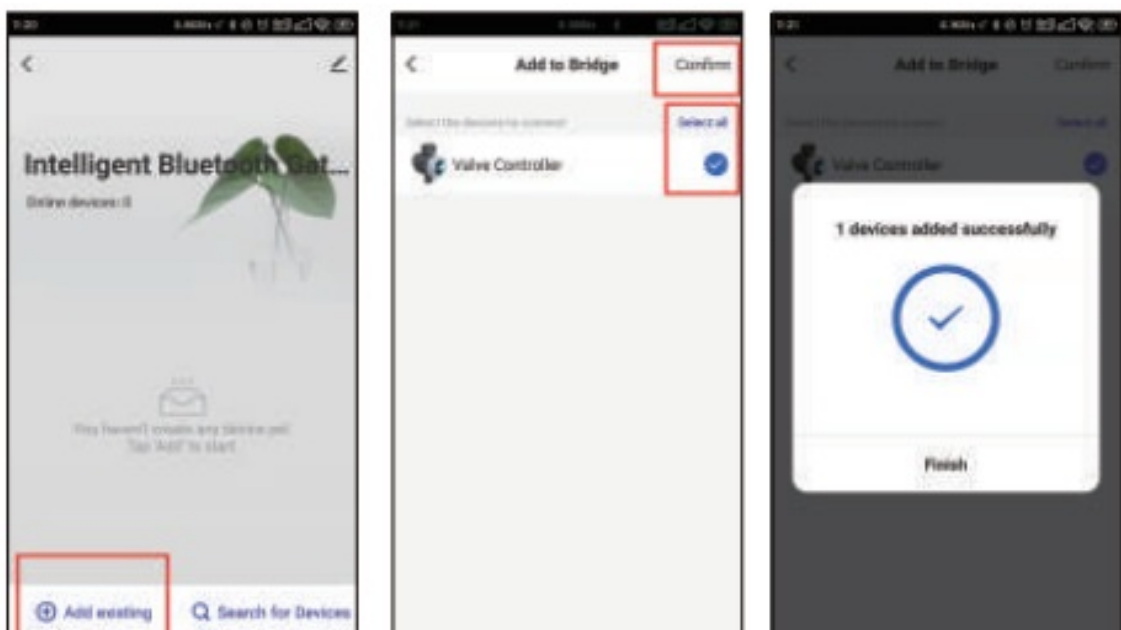
### Smart Irrigation 11mar

Once the connection is complete, the paired devices will displayed on the home homepage. Click on the Smart Bluetooth

Gateway to enter the device's details homepage.

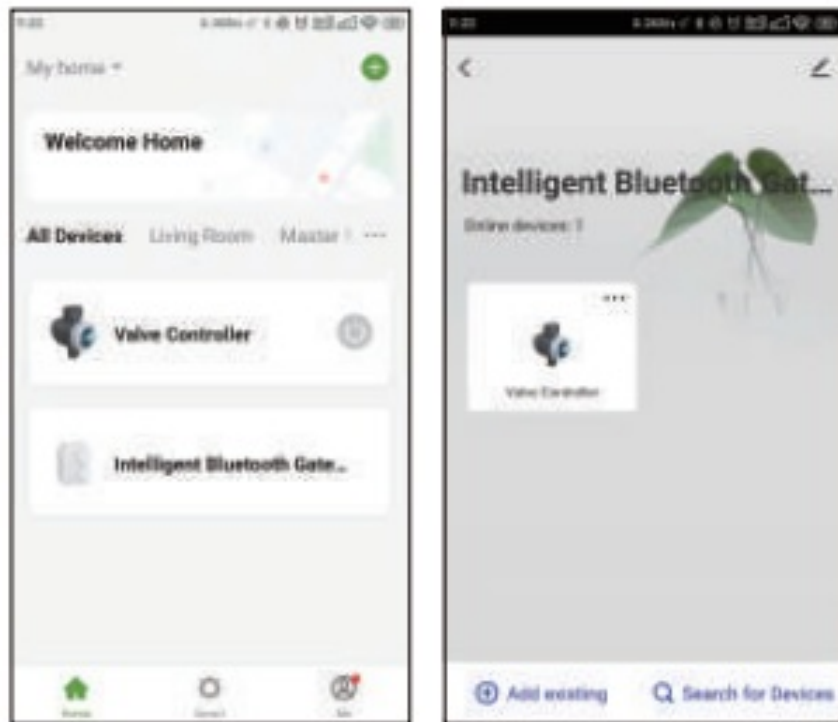


Click “Add existing”, select the device and click “confirm ” to go to the next step of pairing.



Once the connection is complete, the paired devices will be displayed on the home homepage. Click on the Smart Blue- tooth Gateway to enter the device’s details homepage.



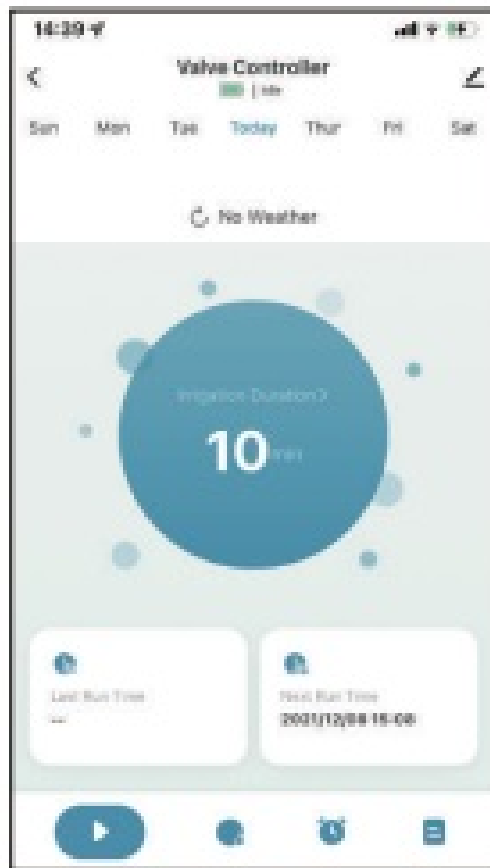


### Basic information of the equipment

1. By selecting "Search for Devices", you can also associate more sub-devices.



2. Click the Bluetooth irrigation timer valve to enter the device details page. This page displays the following information: date, battery status, device status, weather information, irrigation time, last run time, next run time.



3. At the bottom, there is an operating panel with several options: Manual button, Weather Delay, Schedule Setting, Irrigation History



Manual Button for instant watering needs.



Weather Delay for 24/48/72hours.



Schedule Setting with normal schedule and cycle & soak schedule for options.



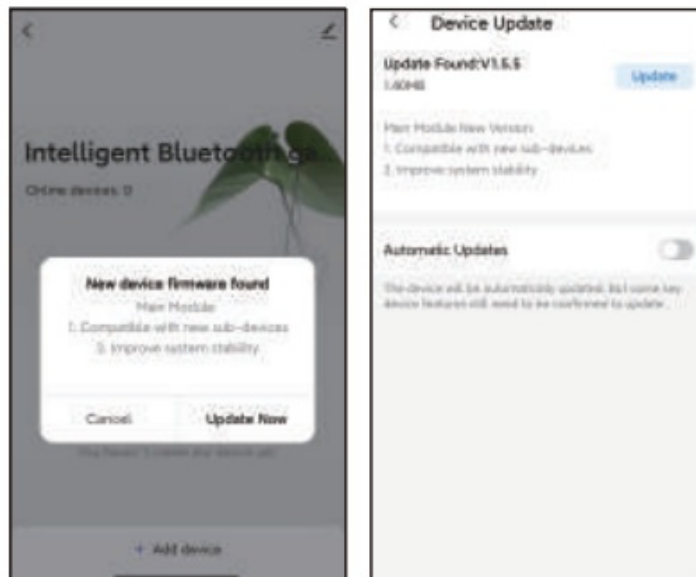
Irrigation history for irrigation track and avoid false operation.

4. Press the button on the top right corner to enter the device information page.

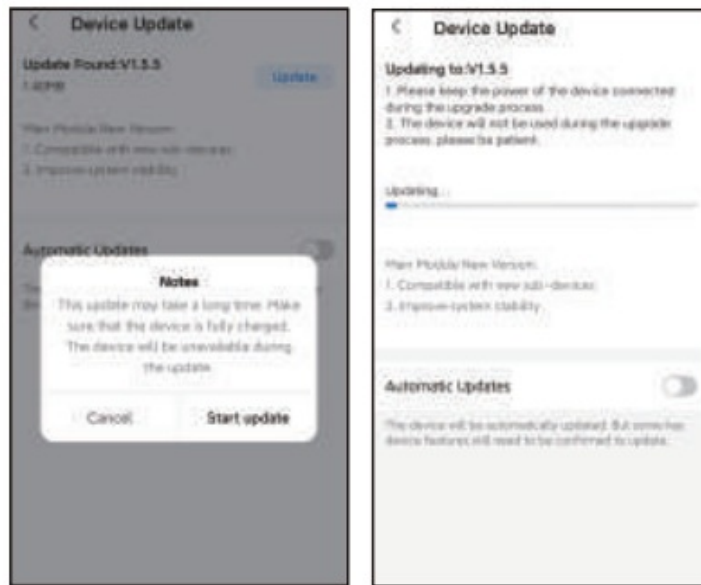


## Version Upgrade

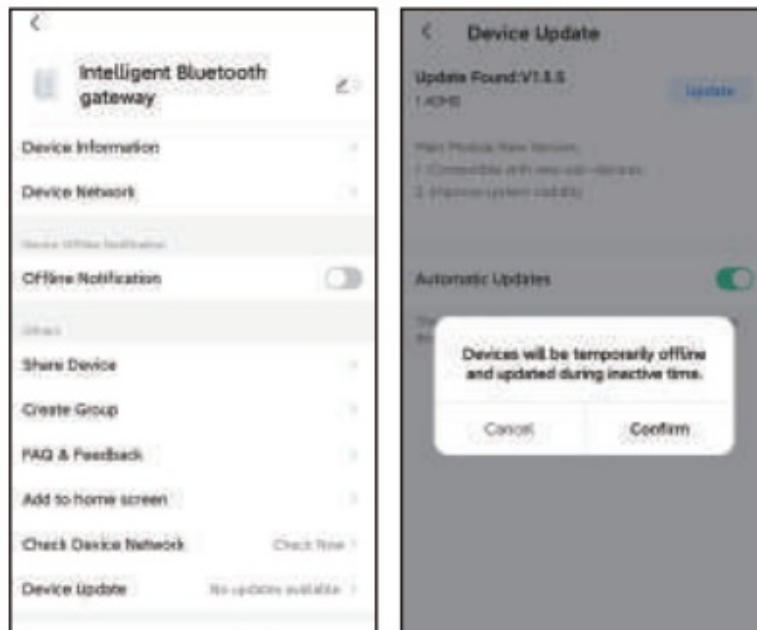
1. Enter the gateway operation interface, if there is a version update, the system will automatically push the update version notification
2. Click “Update Now” to enter the update version interface. The version number of this update will be displayed here. Please click “Update” again



3. This update may take a long time. Make sure that the device is fully charged. The device will be unavailable during the updated.
4. The progress bar can check the update progress.



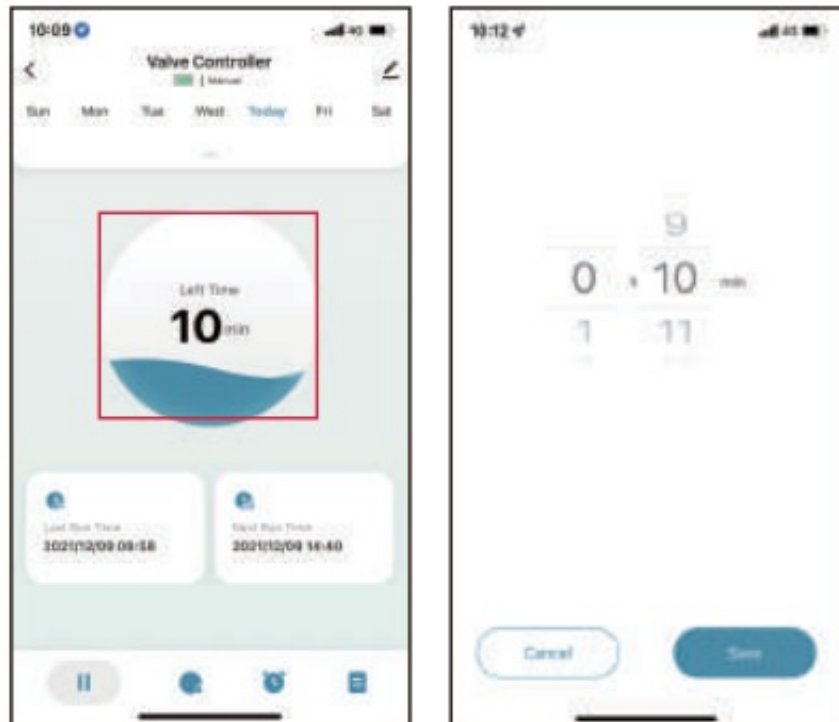
5. If the device has been upgraded to the latest version, the product information page will display “No update available”.
6. In addition, the gateway automatic update function can be turned on, and the device will be temporarily offline and updated during inactive time.



7. When the gateway is upgraded, please remember to upgrade the controller version together. Click to enter the controller age, the system will push the same upgrade notification, please repeat the above actions.

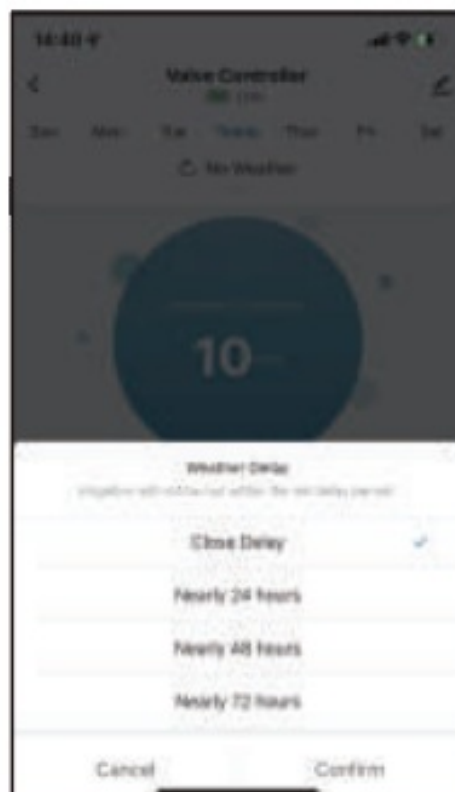
## Manual Operation

Manual mode: Click the "ON" on the water timer to start watering. The default time is 10 mins. Click the " " to manually turn off water timer. " to manually turn Tap the central circle to set manual watering time, from 1 min to 24 hours.



## Weather Delay

Tap the "Weather Delay" to enable the rain delay function. The weather delay can set with 24H, 48H, 72H and closed delay.

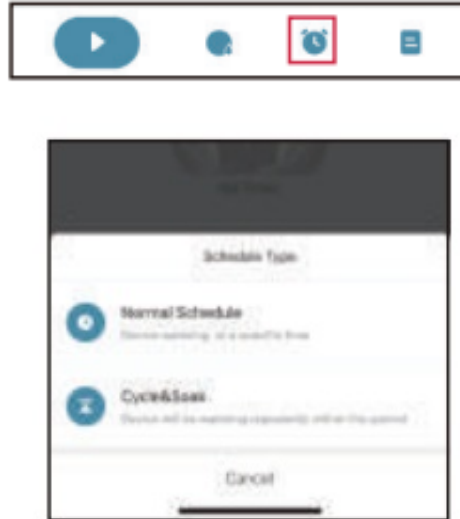


## Schedule and Settings

### Schedule Type

On the schedule page, after select + button, there are two types for selection: Normal type and Cycle & Soak type.  
**Normal Schedule:** means device watering at a specific time.

**Cycle & Soak:** means the device will run the watering schedule repeatedly in this period.

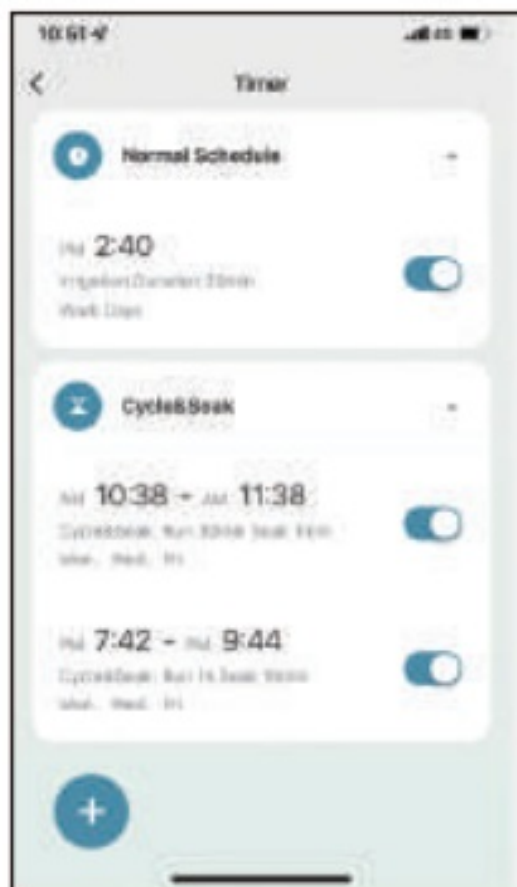


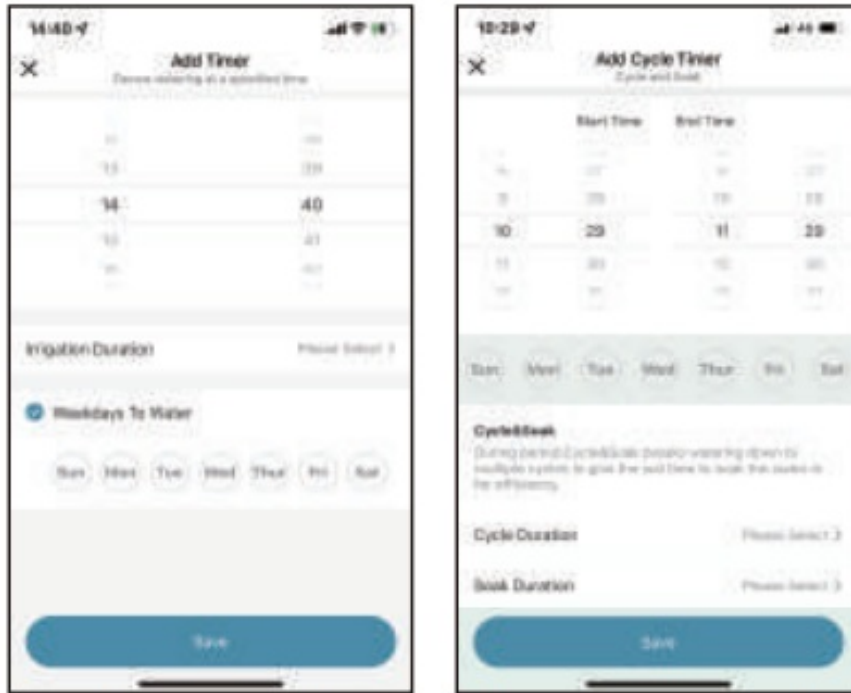
## Schedule Settings

Click and choose the schedule type you need and confirm the watering start time, duration, weekdays to water, and save all settings. The Soak & Cycle type has different setting options. It needs to set the start time, end time of irrigation, the cycle duration and soak duration.

\*\*\*Remark\*\*\*

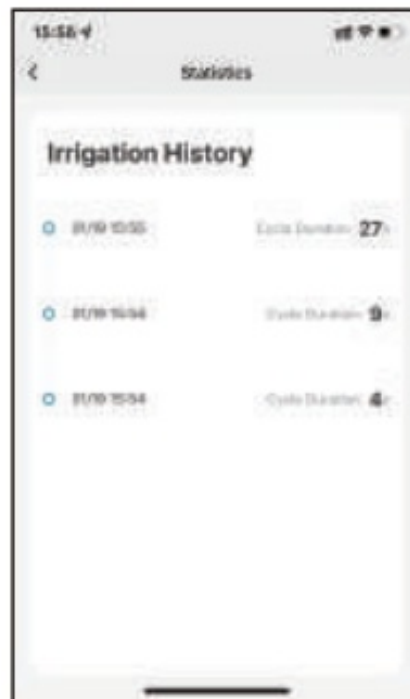
- a. The minimum period cannot be greater than the total time period
  - b. There will be time conflict notice when the time schedules overlap, causing plans fail of setting. (Normal Type)
- When all the plans are set up, they will be displayed on the timer list. There are shortcut buttons behind each group of plans to quickly start or stop the plan directly.





## Irrigation History

Every irrigation plan will be recorded. It's convenient for users to track the implementation of irrigation plans



## Tips for Operation

1. Please make sure the smart phone is near the Bluetooth water timer when connecting or setting the watering Plan. The best range for connection and operation is within 60 meters in the open area.
2. The watering timer will follow and perform the preset watering schedule after application set Successfully, even if the phone is Out of the best connecting range.
3. If you need to replace the battery for the timer, please go to control page of the timer on the APP after replacing the battery so that the system can automatically activate the connection between the timer and the ehub.
4. For a better experience, it is recommended to update the device version of the timer to the latest version before

use. If there is a push to update the device version later, please upgrade to use the latest version to optimize and upgrade some functions.

Warranty & Warning

1. WARRANTY

The warranty aims for the problem of non-artificial damage and provides a one-year warranty from the date of leaving the factory.

2. WARNING

Under freezing temperatures, timers should be removed from the faucet and stored indoors to avoid potential freezing damage.

Please clean filters regularly and replace if it is worn in order to prolong life of timer.

Customer Support

If you find it difficult to set up and want to watch the setting tutorial video, please subscribe to our Youtube channel: RainPoint, or visit the link <https://rainpointus.com/pages/playlist>  
If the app and the user manual don't have what you're looking for, and you need some help, please prepare the Model NO. and LOT NO. of your device and contact us before returning the products to the Store.

US Free Hotline: 1-833-3815659

Email: [service@rainpointus.com](mailto:service@rainpointus.com)

Model NO.: xo00000x{{On the timer label}


LOT NO: Xx00oooo0o0oxoo(On the timer label)

WEB: [www.rainpointus.com](http://www.rainpointus.com)

Email: [service@rainpointus.com](mailto:service@rainpointus.com)

Free Hotline 3815659

Documents / Resources

	<a href="#">RainPoint TTV102B Bluetooth Smart Irrigation Timer + Bluetooth Gateway [pdf] User Manual</a> TTV102B, TWG009BW, TTV102B Bluetooth Smart Irrigation Timer Bluetooth Gateway, TTV102 B, Bluetooth Smart Irrigation Timer Bluetooth Gateway, Bluetooth Smart Irrigation Timer, Smart Irrigation Timer, Irrigation Timer, Timer
---	--

References

- [RP Product Playlists – Rainpoint](#)