



RainPoint TTV102B Bluetooth Irrigation Timer User Manual

[Home](#) » [RainPoint](#) » RainPoint TTV102B Bluetooth Irrigation Timer User Manual 

RainPoint TTV102B Bluetooth Irrigation Timer



Contents

- 1 WARM TIPS PLEASE READ BEFORE USING
- 2 INTRODUCTION
 - 2.1 CONTENTS IN THE BOX
- 3 PRODUCE SPECIFICATIONS
- 4 INSTALLATION
 - 4.1 INSTALL APP ON YOUR PHONE
 - 4.2 PAIR THE IRRIGATION GATEWAY
 - 4.3 CONNECT THE BLUETOOTH IRRIGATION TIMER
 - 4.4 ADD BLUETOOTH IRRIGATION TIMER TO IRRIGATION GATEWAY
 - 4.5 INSTALL THE BLUETOOTH WATER TIMER
 - 4.6 TEST BEFORE USE
- 5 APP PROGRAMMING
 - 5.1 APP HOME SCREEN
 - 5.2 BLUETOOTH IRRIGATION TIMER
 - 5.3 SMART AUTOMATION
- 6 RESET THE DEVICE
 - 6.1 How to reset the Bluetooth Irrigation Timer ?
- 7 TROUBLE SHOOTING
- 8 CUSTOMER SERVICE
- 9 Documents / Resources
 - 9.1 References
- 10 Related Posts

WARM TIPS PLEASE READ BEFORE USING



Don't use the water timer when the temperature is below 37°F(3°C), and please store the timer indoors to avoid potential freezing damage.



The filter traps dirt particles, preventing them from entering the timer and causing clogging. Please clean the filter regularly and replace it if worn.



To ensure a longer lifespan, please use 3 new AAA alkaline batteries (not included). Don't mix new and old alkaline, standard (carbon-zinc), or rechargeable batteries



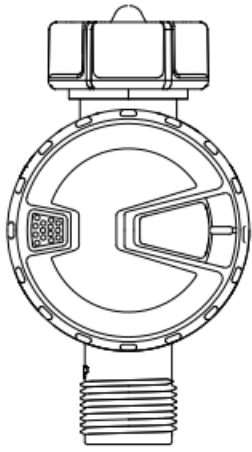
Please activate the water timer before first use or after a period of inactivity (Refer to page 6: **ACTIVATE THE TIMER BEFORE USE**)



Only use with clean cold water

INTRODUCTION

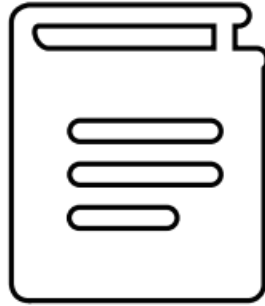
CONTENTS IN THE BOX



A



B



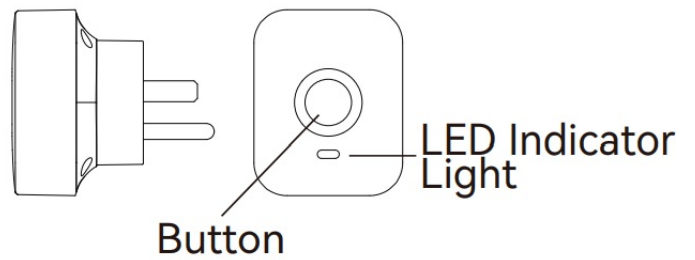
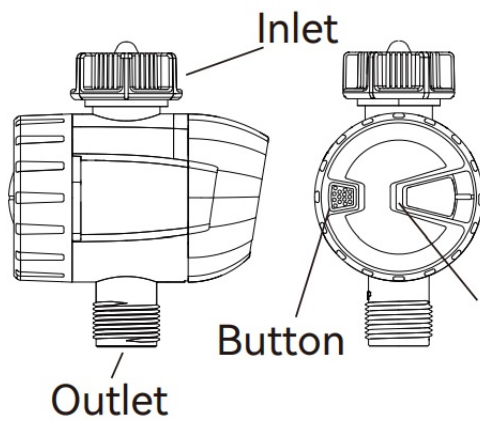
C



D

- A.** 1 x TTV102B 1 Zone Bluetooth Irrigation Timer
- B.** 1 x TWG009BW Irrigation Gateway
- C.** 1 x Instruction Manual
- D.** 1 x Quick Setup Guide

TTV102B Bluetooth Irrigation Timer TWG009BW Irrigation Gateway



PRODUCE SPECIFICATIONS

Min/Max Operating Pressure	0.5bar-8bar (7.25 psi-116.03 psi)
Max Flow Rate	10 Gal/Min (35L/Min)
Waterproof Rate	IP54
Working Temperature	37.4°F-122°F(3°C-50°C)
Thread	NH (US) for 3/4"taps
	BSP(EU) for 3/4" or 1"taps
Power By	3 AAA (1.5V) alkaline batteries(Excluded)

INSTALLATION

INSTALL APP ON YOUR PHONE

1. Download the RainPoint App Search for "RainPoint" on Google Play or App Store or scan the QR code to download the RainPoint APP.
Register your RainPoint account Open your RainPoint APP, select Set Up Follow the prompts to register a RainPoint account with your email or mobile number.


PAIR THE IRRIGATION GATEWAY

1. Plug your Irrigation Gateway to an indoor power source near your WiFi router and the outdoor location of your timer.
2. Open the RainPoint App and tap "Add device "or "" to add a new device.
3. Tap "Smart Irrigation" and "Add Manually". then select "Irrigation Gateway " Rainpoint.

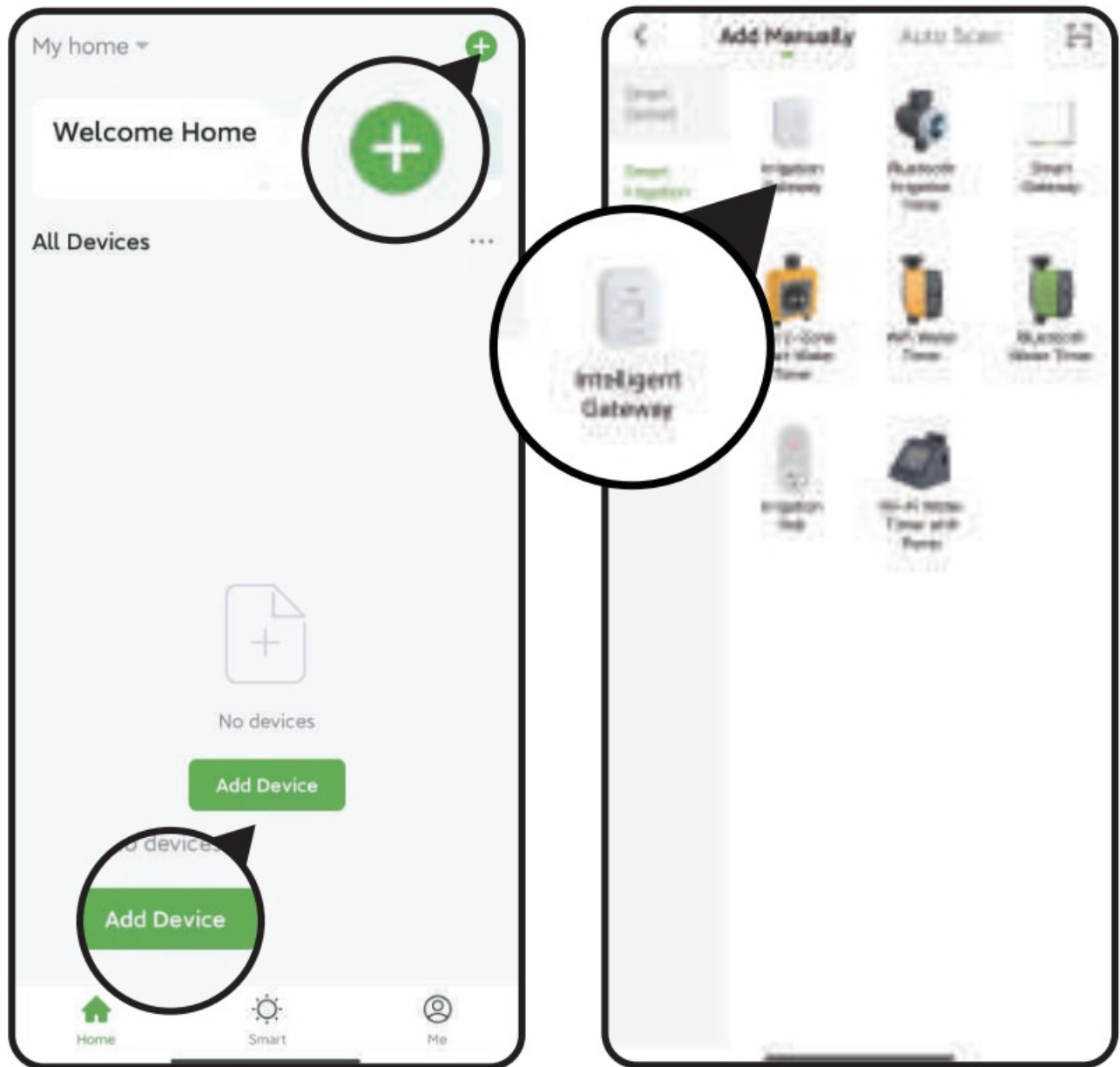


Rainpoint 

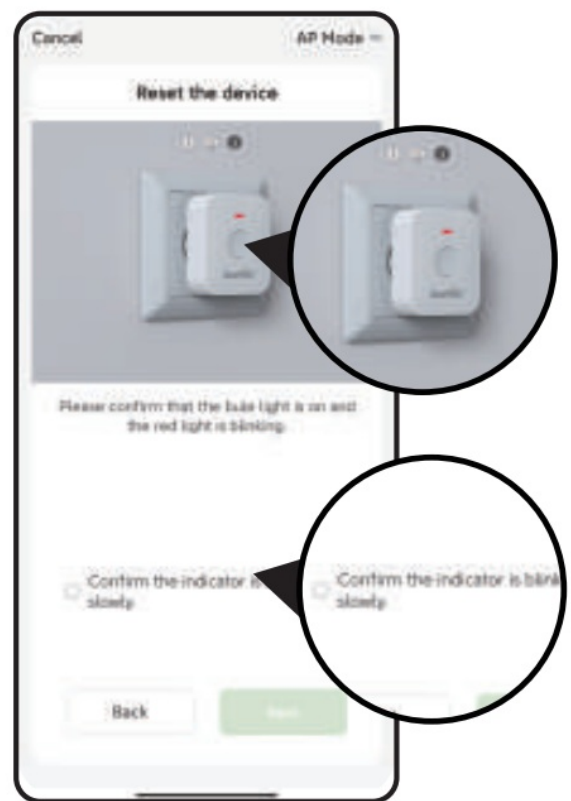
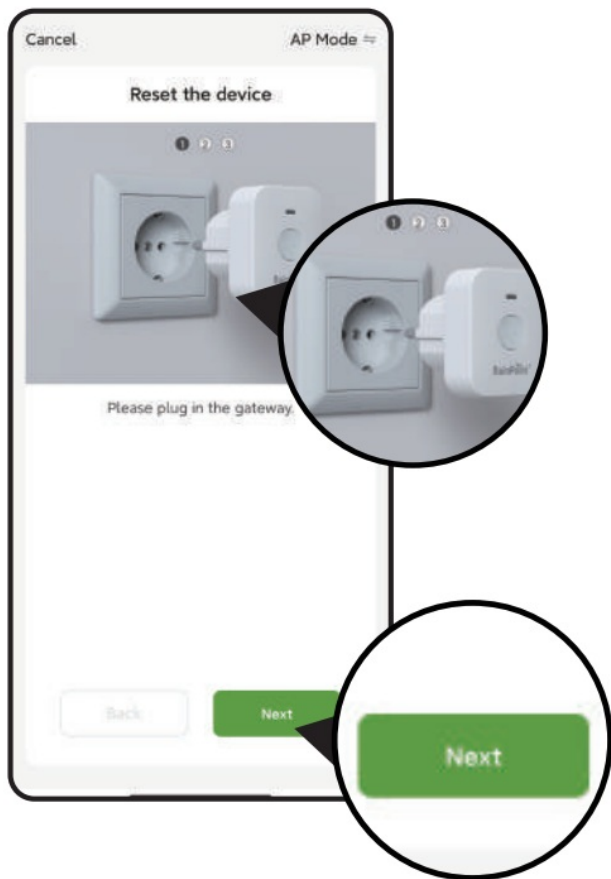




Register



4. Plug the TWG009BW Irrigation Gateway into an outlet near the router and wait 10 seconds for the device initialization to complete. Press and hold for 5 seconds until the blue indicator light is always on and the red indicator light is blinking slowly, Then the APP will search and pair your Irrigation Gateway automatically.

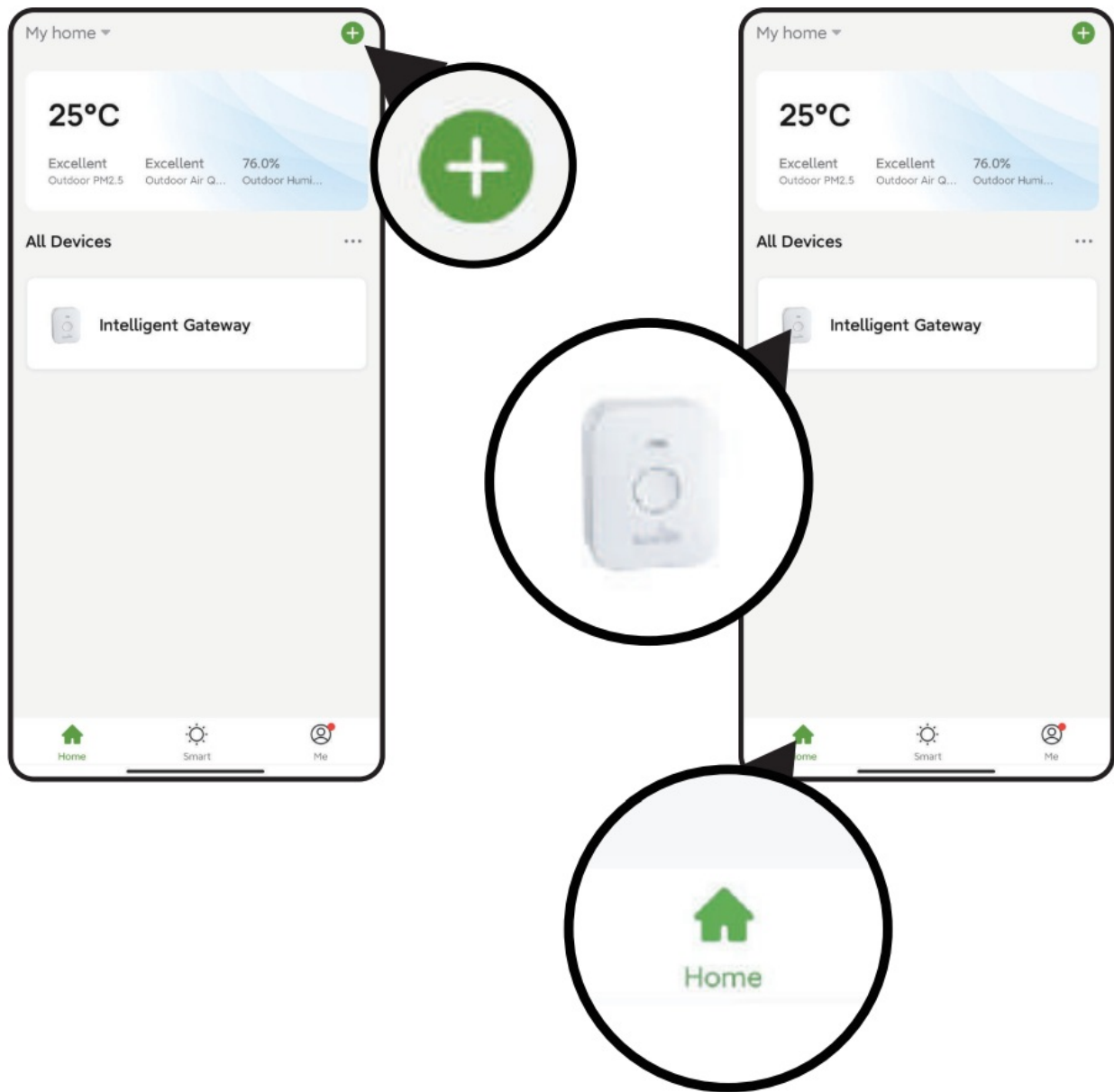


5. Select 2.4Ghz WiFi, and enter the password Tips: If your router is a dual-band router, and you cannot identify the 2.4Ghz or 5Ghz WiFi, please tap the blue words Common router setting method to name the 2.4Ghz WiFi differently, then you can select it individually.



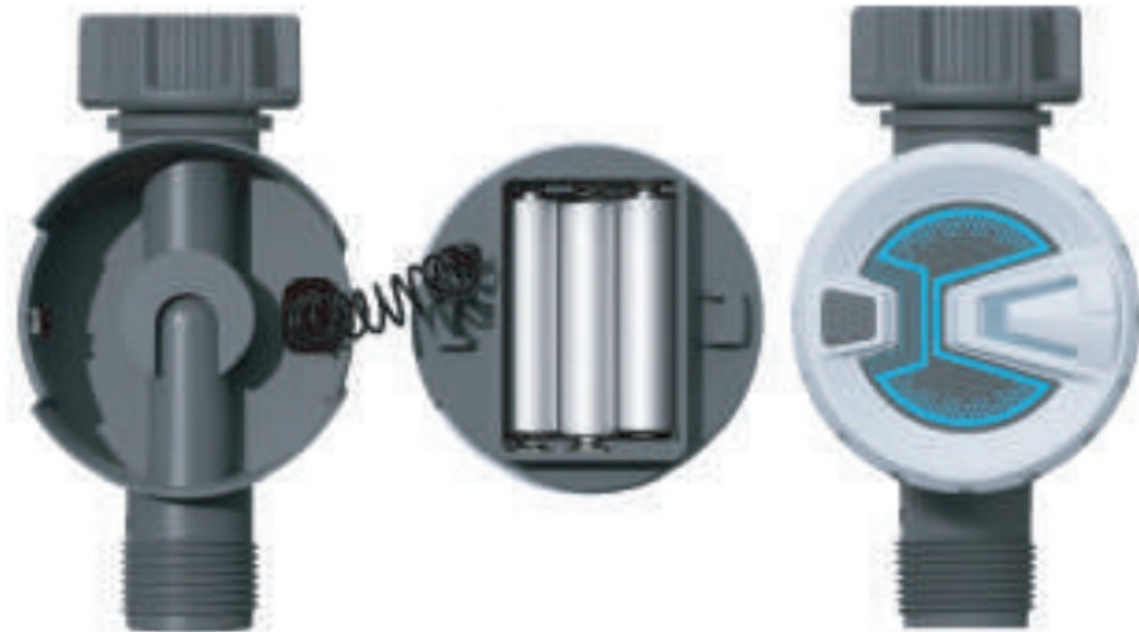
If you encounter problems during the connection process, please search @RainPoint on Youtube to watch the operation video, or contact us at service@rainpointus.com.

6. After the connection is successful, the color icon of Irrigation Gateway will be displayed on the APP home screen.

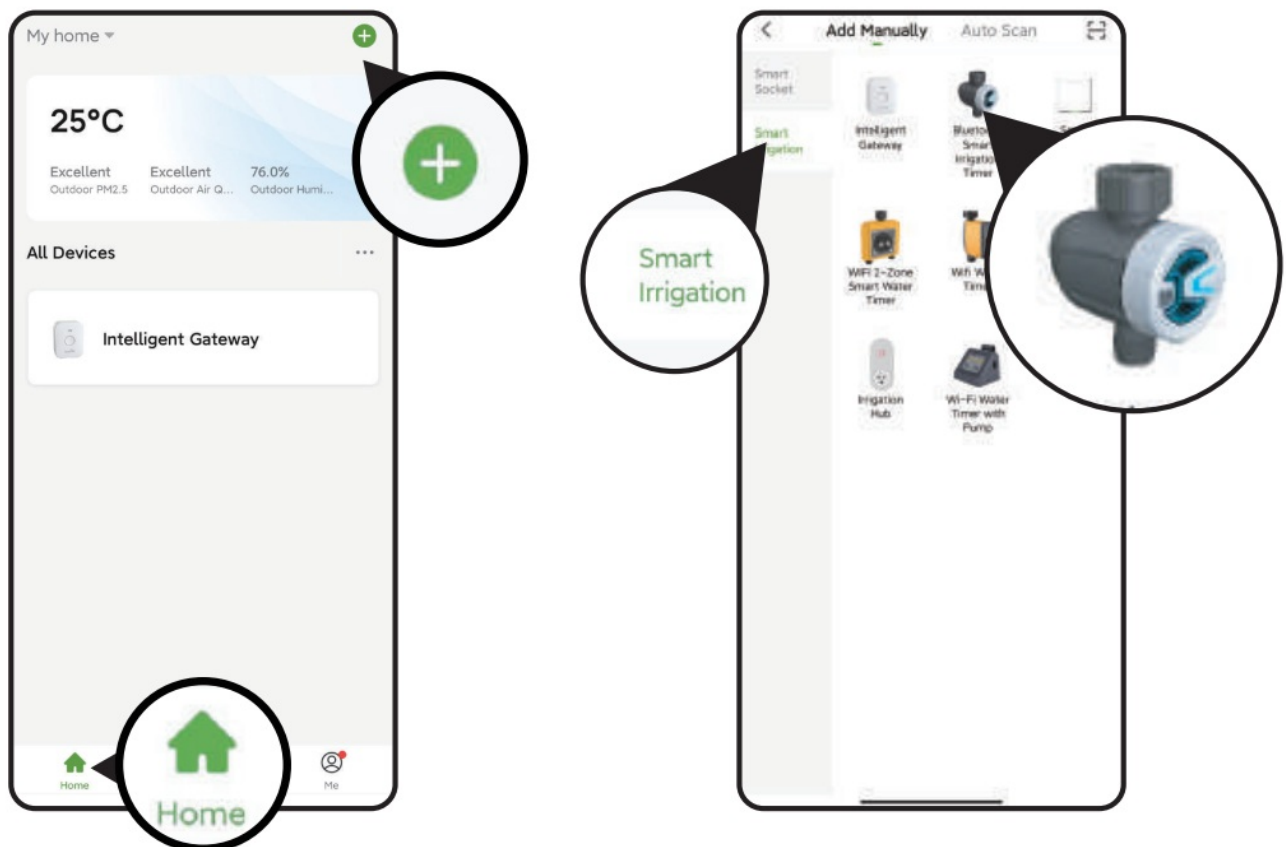


CONNECT THE BLUETOOTH IRRIGATION TIMER

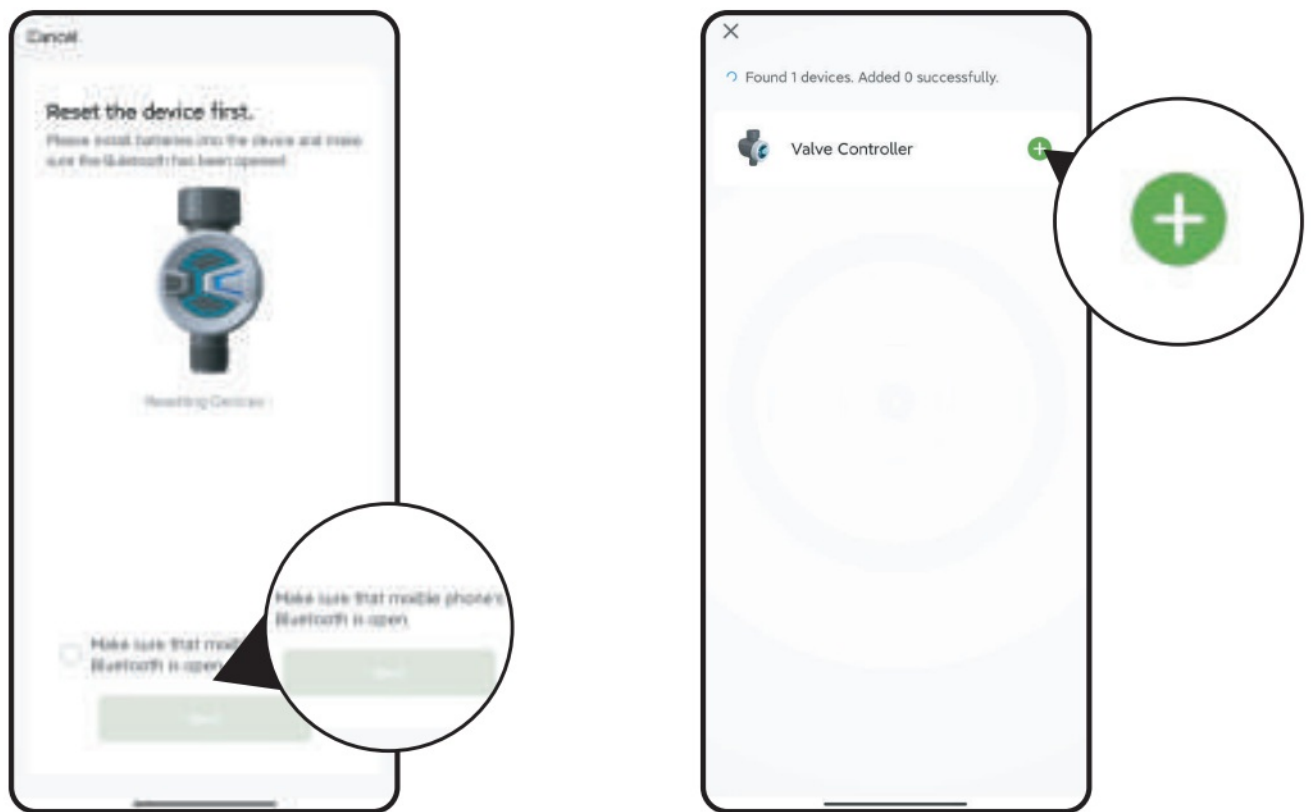
1. Insert 3 *AAA alkaline batteries into the battery tray of the timer. Restore the battery tray and make certain it is secured.




2. Return to the APP home screen, and tap " + " to add the WiFi timer
3. Tap "Smart Irrigation" and " Add Manually " , then select " Bluetooth Irrigation Timer



4. Press and hold the button on the timer until the Blue LED indicator blink rapidly (2 times per second). Then select "confirm indicator rapidly blink" and tap Next. The APP will search and pair your Bluetooth Water Timer automatically.
5. Click " + " on the right side of the device to add the device, and then click "Done" for final confirmation after the device is successfully added.



 **Note:** Before adding the water timer, please turn on the Bluetooth for pairing, and turn off the Bluetooth after the pairing is successful. In addition, please pay attention to the distance when connecting with Bluetooth. We recommend that you connect within 1 meter of the water timer for faster pairing.

ADD BLUETOOTH IRRIGATION TIMER TO IRRIGATION GATEWAY

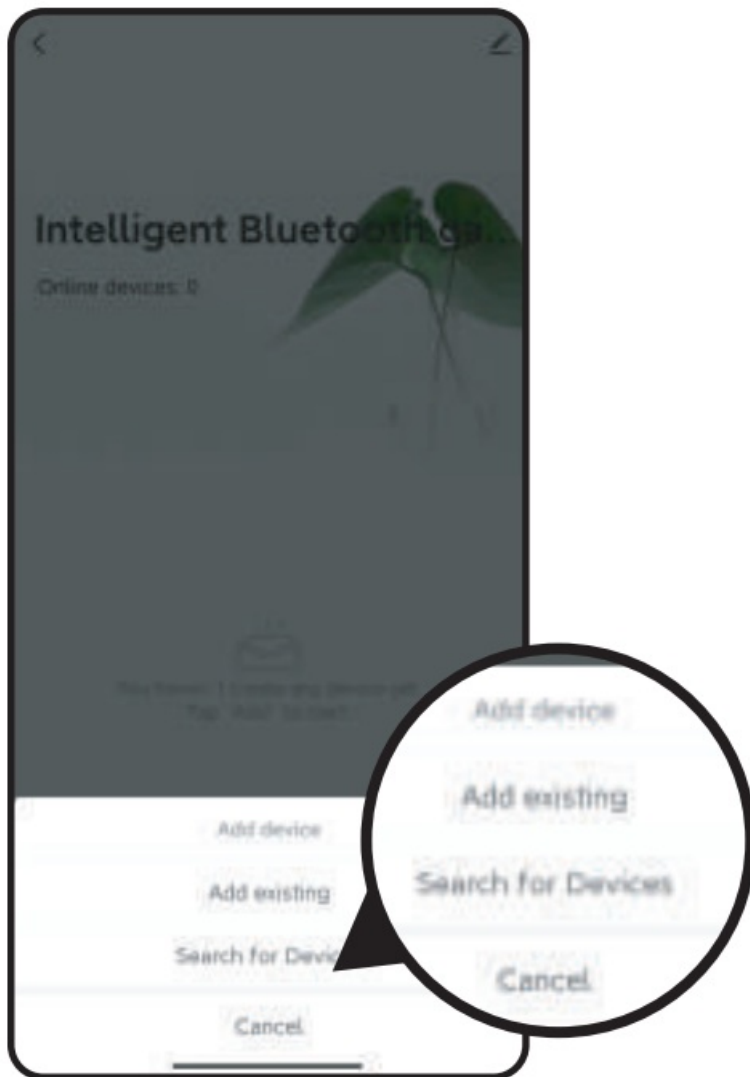
1. Go to the home page and click on the gateway



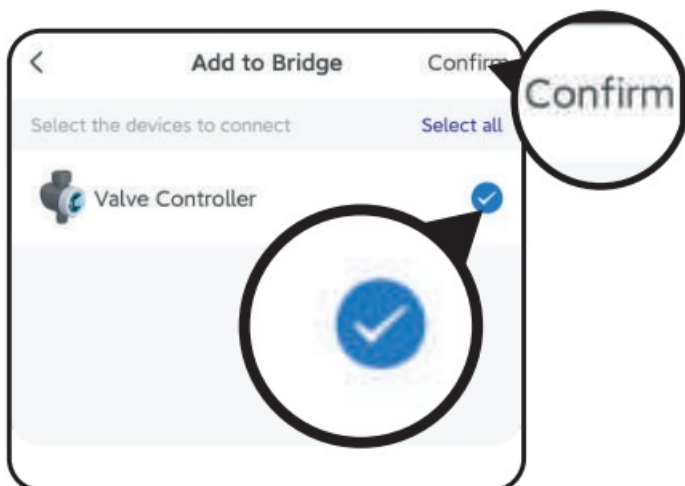
2. Click on Add Device



3. Select Add existing



4. Select the timer and confirm



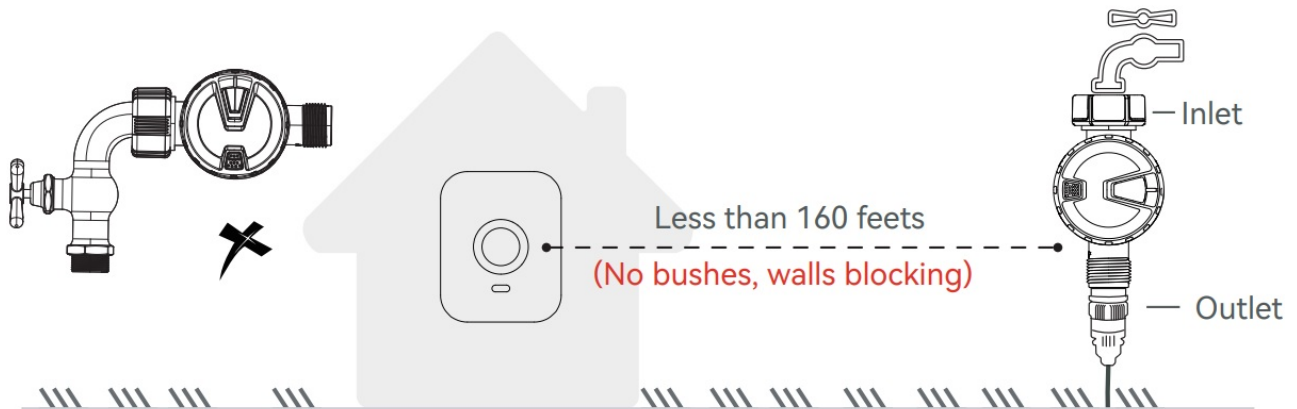
 When you add the timer to the Irrigation Gateway it becomes a remote controllable timer

INSTALL THE BLUETOOTH WATER TIMER

1. Turn off the garden faucet.
2. Wrap Teflon Tape around the faucet threads.
3. Screw the timer to the garden faucet and make the display is as vertical as possible to the ground to prevent

rainwater from accumulating and leaking into the interior.

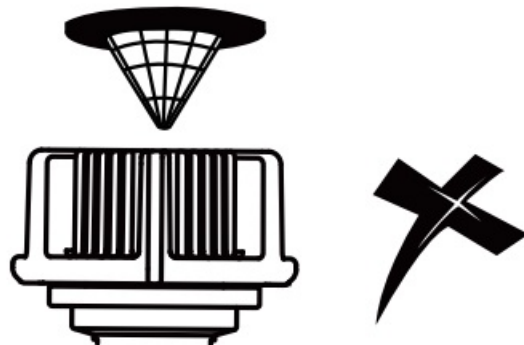
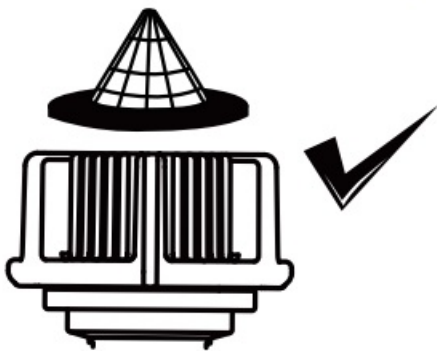
4. Wrap Teflon Tape around the threads of the timer outlets.
5. Screw the garden hoses to the timer outlets.
6. Turn on the faucet after programming the timer.



Tips: If the connection between the timer and the faucet or hose is not tight or leaking, wrap more Teflon Tape(thread seal tape) to make them tight.



Please install the filter properly and keep it clean as follows.

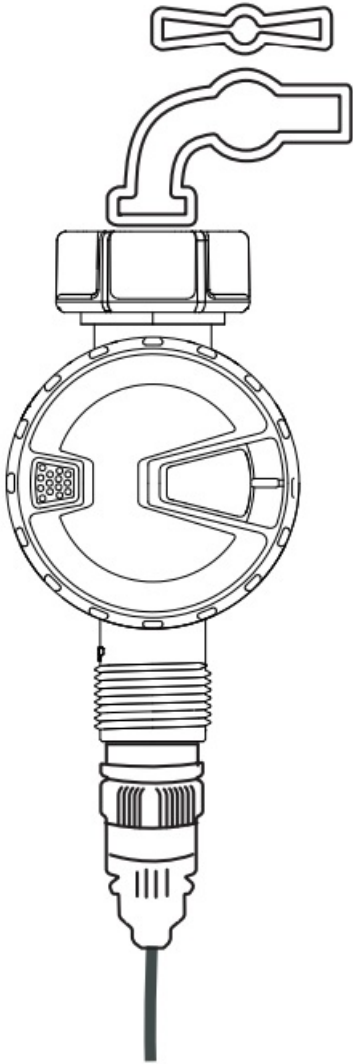


Warning

* Please make sure the smart phone is near the Bluetooth water timer when connecting or setting the watering plan. The best range for connection and operation is within 60 meters in the open area. If there are walls iron gates or bushes blocking, please shorten the distance between them to better receive the signal. Please install the filter correctly to achieve better filtering effect.

TEST BEFORE USE

Congratulations, you have completed the connection and installation of the Bluetooth Irrigation Timer. Please test whether the internal valve of your water timer is normal before using it.



1. Keep the faucet turned off.
2. Press the button of the timer , with a “click” sound,the valve inside the timer opens for manual watering. After a few seconds,press the button again, the “click” will sound again, and the valve will close.
3. Turn on the faucet a little bit, press the button of the timer to check if the water flow out or shut off as expected. If yes, the valve is normal, please use it with confidence! If not, please repeat the above steps several times.

The test is over, everything is normal, please keep the faucet fully turned on!

Note:

When testing, please keep away from the water outlet of the timer to avoid being splashed and wet.

Explanation: The valve is activated usually, but due to various factors such as external force or the environment during storage and transportation, the valve may be protectively closed. In this case, you need to activate the timer manual.

APP PROGRAMMING

APP HOME SCREEN

Local Weather Forecast

Get your local weather forecast from website to realize intelligent watering.

All Devices

A check list of all the devices you have connected. Tap to enter the operation page of devices you have added to program the operation schedule of the device.

Smart

On the "Smart" screen, there is "Tap-to-Run" and "Automation" functions. You can automate multiple smart products by setting conditions and tasks.

Home Management

You can locate your home, customize the home name and add family members. It is convenient for you to manage irrigation schedules for different residences.

Add Devices

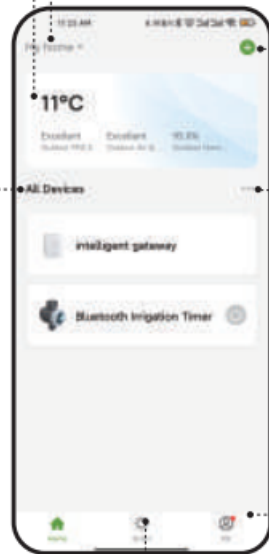
You can add multiple RainPoint devices on the APP to create a smart home irrigation system.

Room Management

Room Management is for indoor automatic irrigation system in different room.

Me

On the "Me" screen, there is "Message Center" and "FAQ & Feedback" functions. You will receive water leak and low battery alerts on "Message Center". And you can get FAQ and report issue on "FAQ & Feedback".

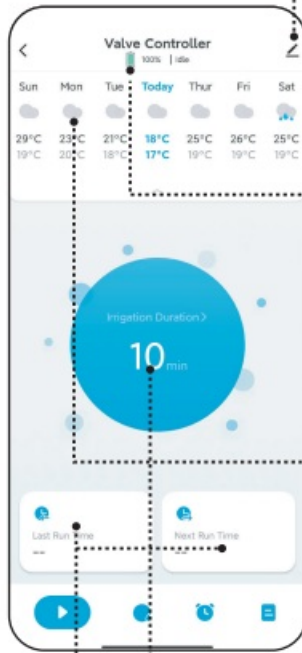
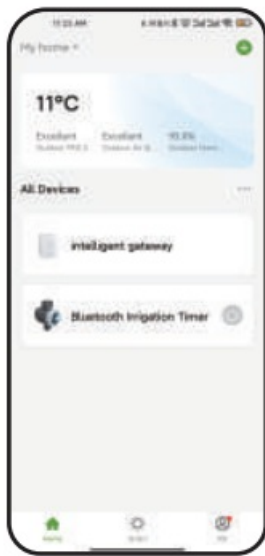


BLUETOOTH IRRIGATION TIMER

Tap the Bluetooth water timer on the all devices list of APP home screen. It will display all the parameters and functions of the timer manually set on the APP.

Note:

The Bluetooth timer will follow and perform the preset watering schedule after application set successfully, even if the phone or device loses network connection.



Device Control

Tap on the top right of the screen, you will enter the page for device information.

Battery Status & Working Status

Display the battery level of the timer, the current working mode.

Weather Information


Get your local weather forecast from website.

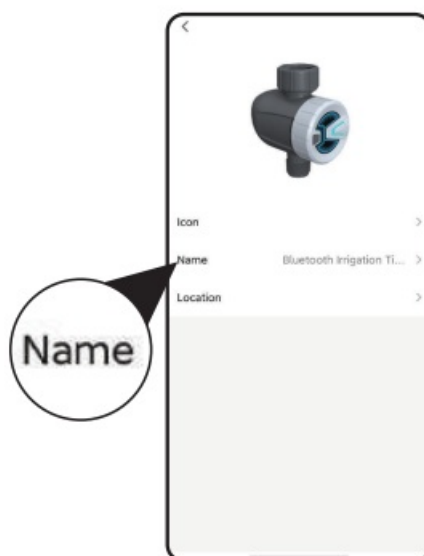
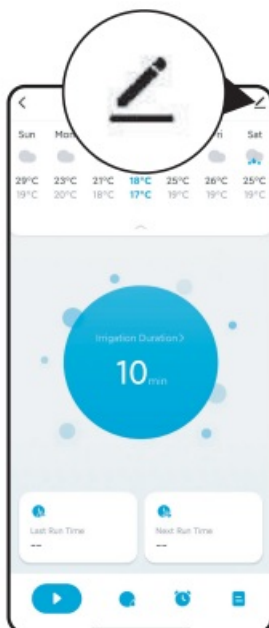
Irrigation Time

Manually set the watering duration of the Bluetooth timer, it will display the duration on the screen.

Last Run Time& Next Run Time

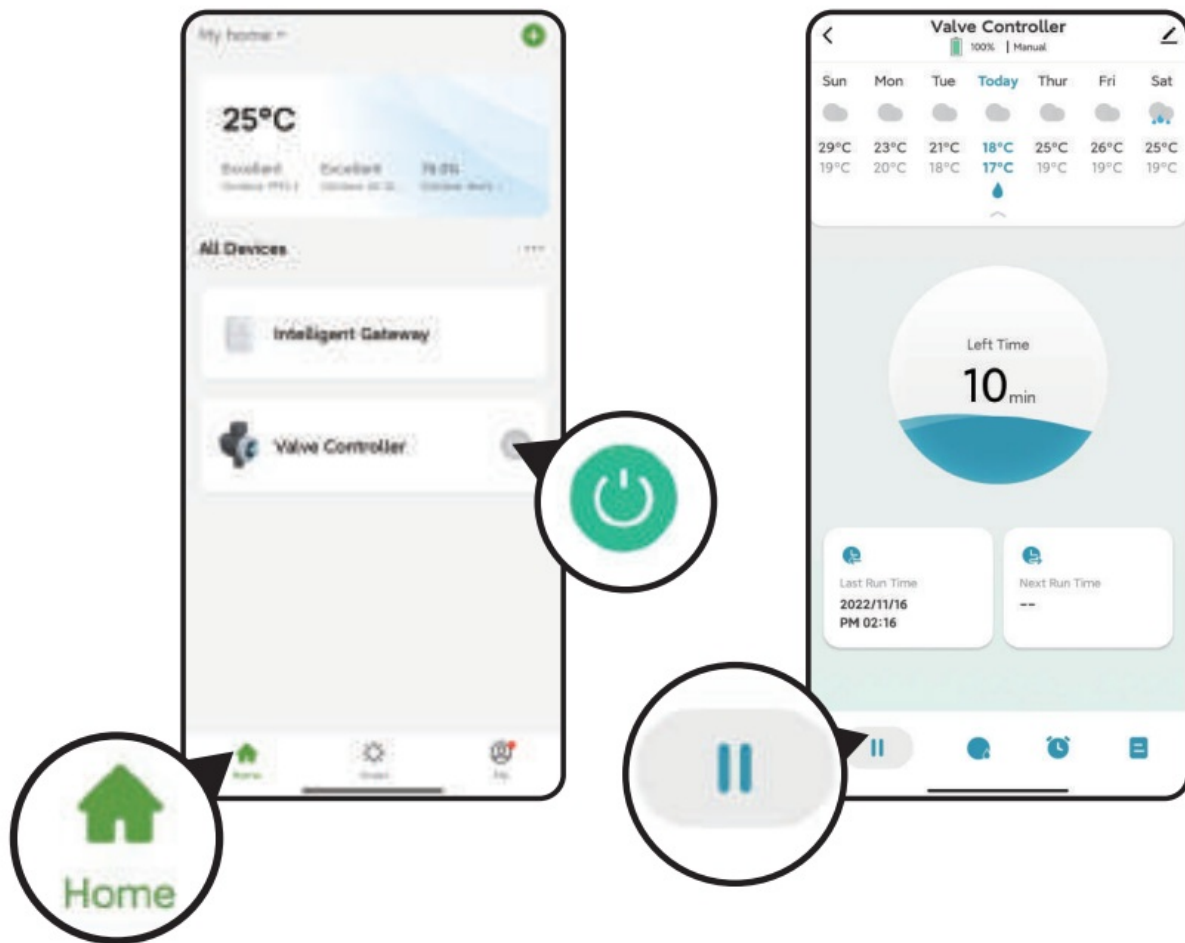
The Bluetooth timer for the last watering time and the next watering time.

Tap  the "Device" name on the screen to setup. You can change the Device profile for device name. You can name your Bluetooth timer if you have more than one. This helps you identify your timers.



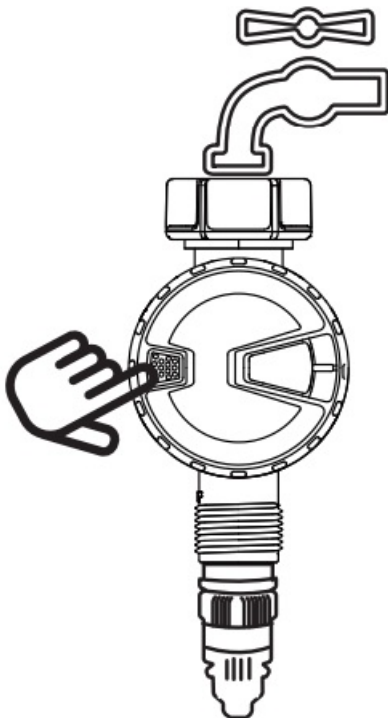
Manual Watering

(Default watering is 10 minutes) Manual/Hand Watering 3 methods Operating Method 1: APP Home Screen
Operating Method 2: Timer Editing Screen



Operating Method 3 Bluetooth Timer

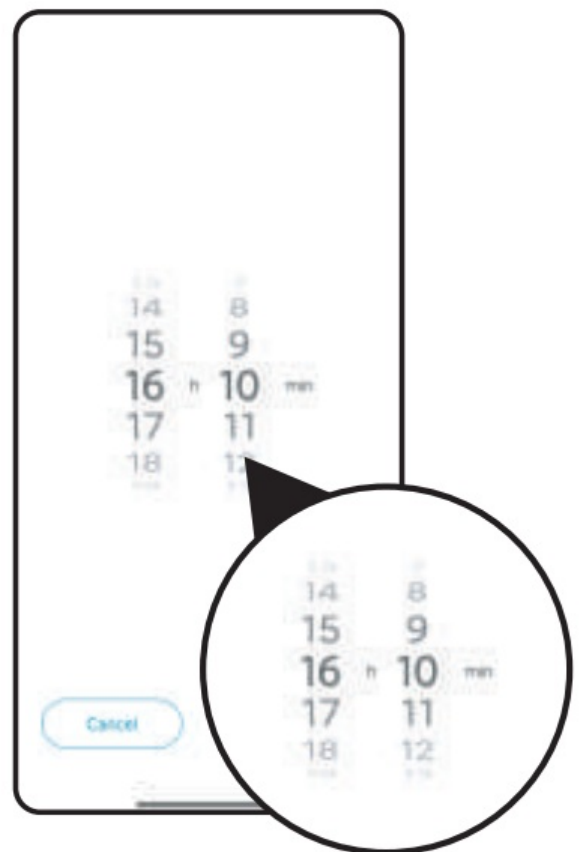
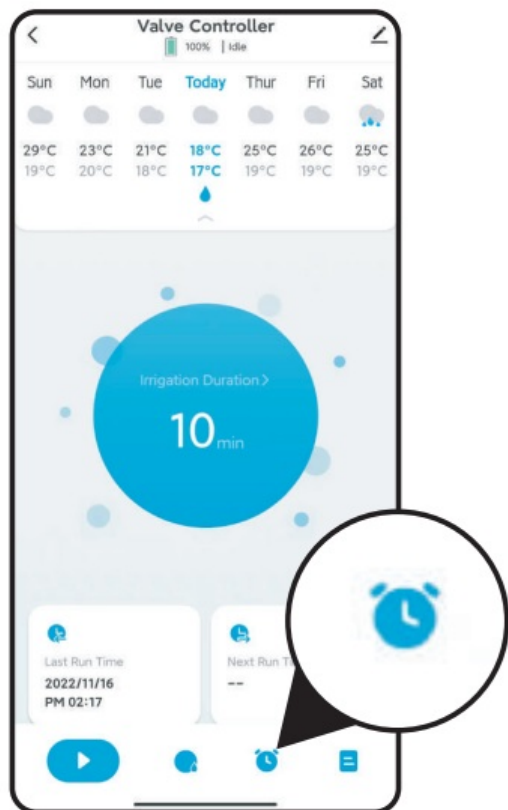
Press and hold the gray button of the Bluetooth timer, you will hear a “di” sound that means the valve is open and the blue light is flashing. Press again to close the valve.



Manual Irrigation Duration

1. Click the Irrigation Duration button to set the desired manual watering time and click Save.

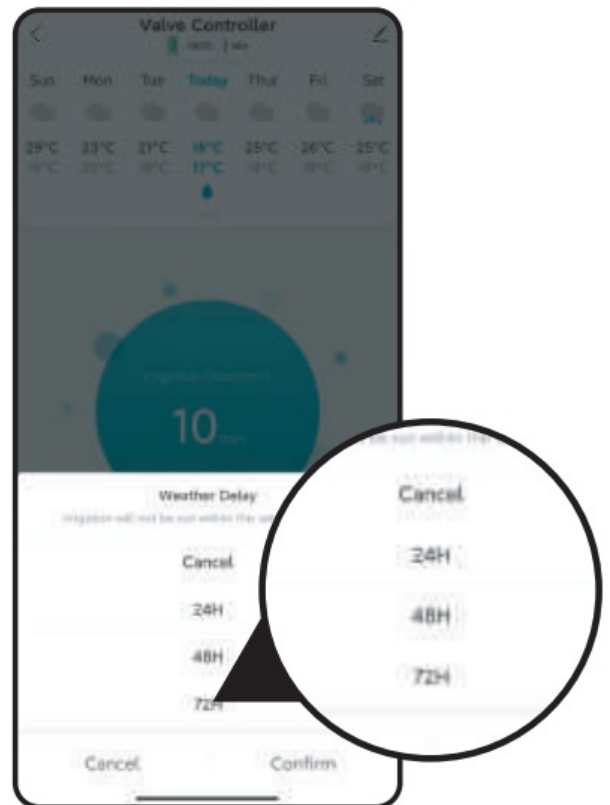
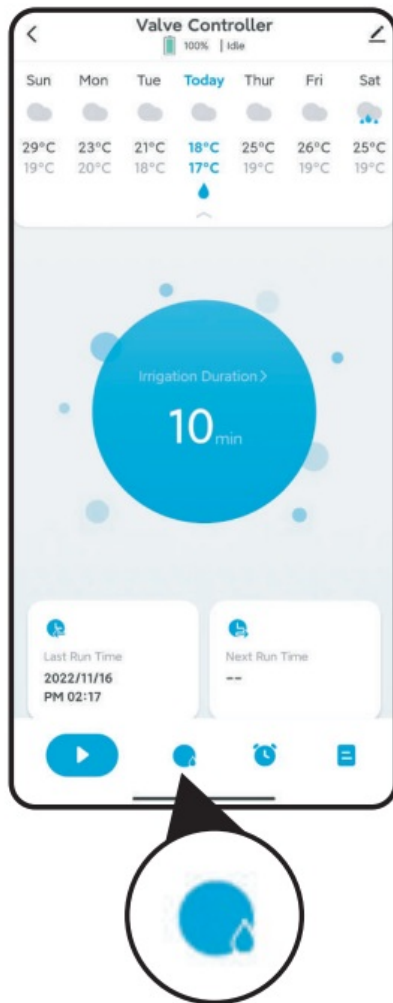
2. Go to the home page to tap the start watering bottom.



Manual Rain Delay

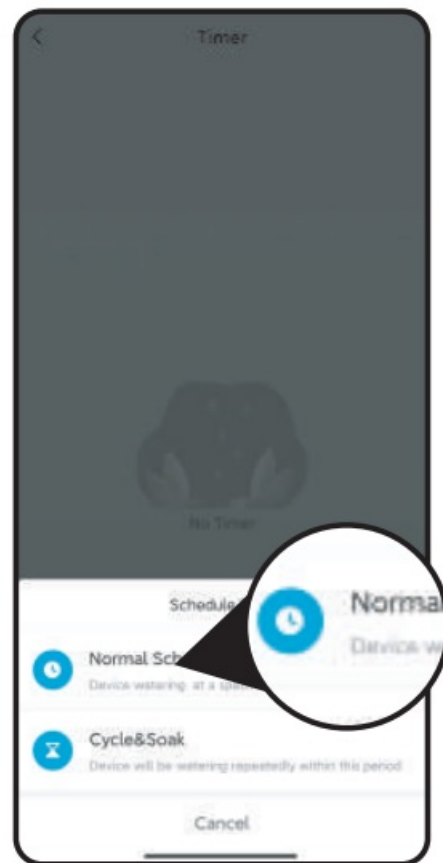
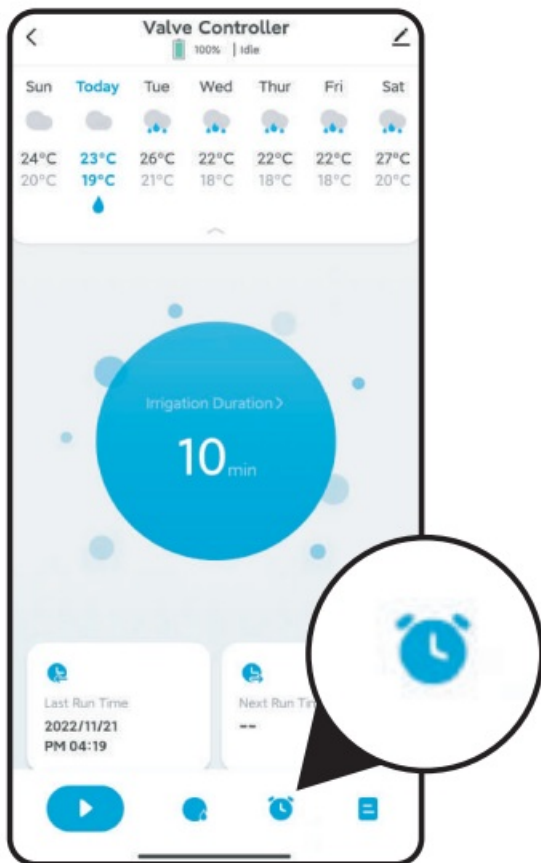
Rain delay applies to rainy days. During the rain delay, the timer stops watering.

After the rain delay ends, the timer will be executed according to the next watering plan. The timer can set 24/48/72 hours of rain delay



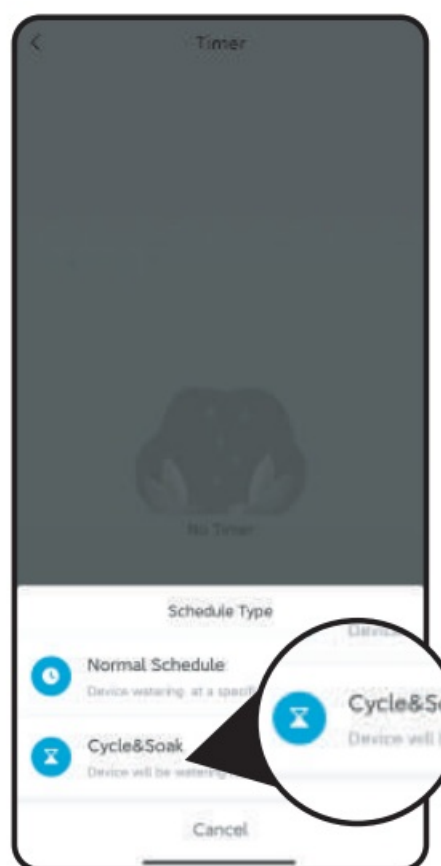
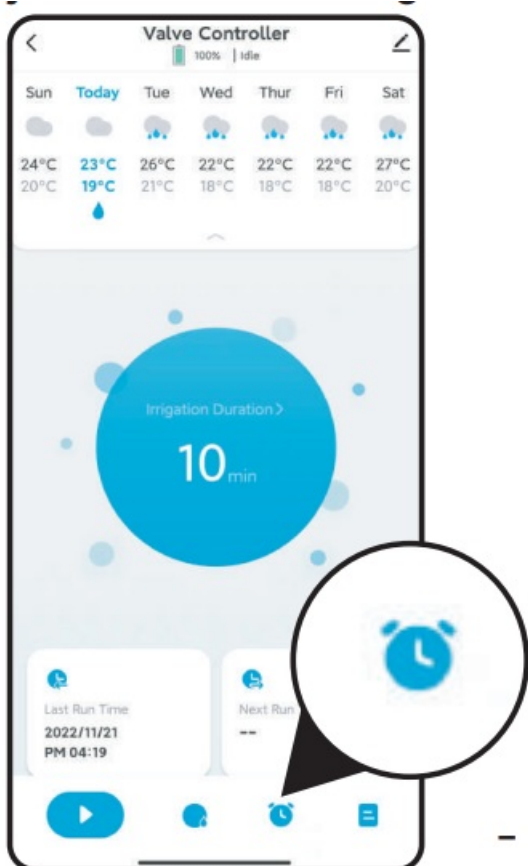
How to set the Normal Schedule

1. Click to enter the setting Normal Schedule.
2. Tap to enter the Normal Schedule.



How to set the Cycle & Soak Schedule

1. Click to enter the setting Cycle & Soak Schedule.
2. Select Cycle & Soak watering mode.



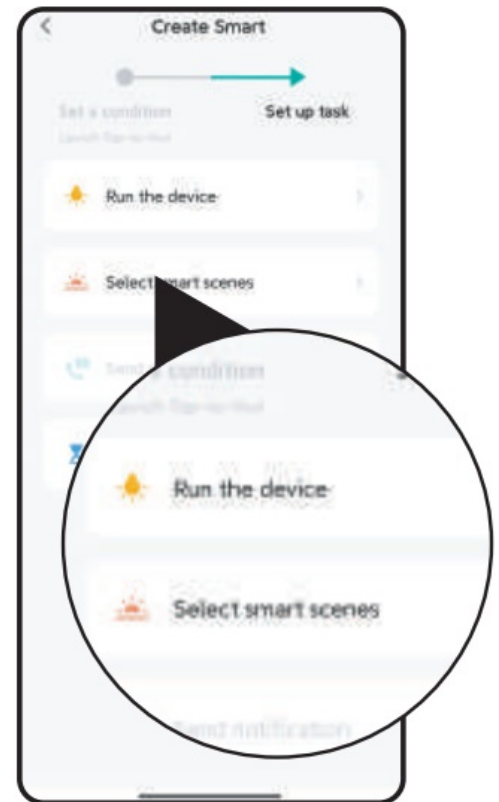
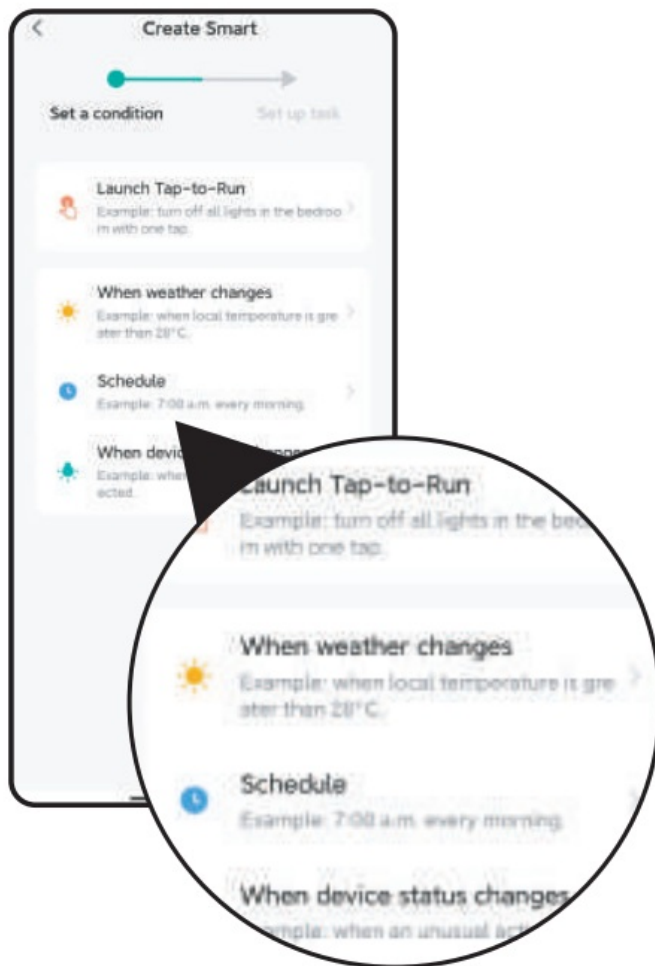
SMART AUTOMATION

Automation & Tap-to-Run Automation means the devices can execute automatically according to the set conditions such as the local weather, device status and time. Tap-to-Run means you can control multiple devices and plans with one tap.



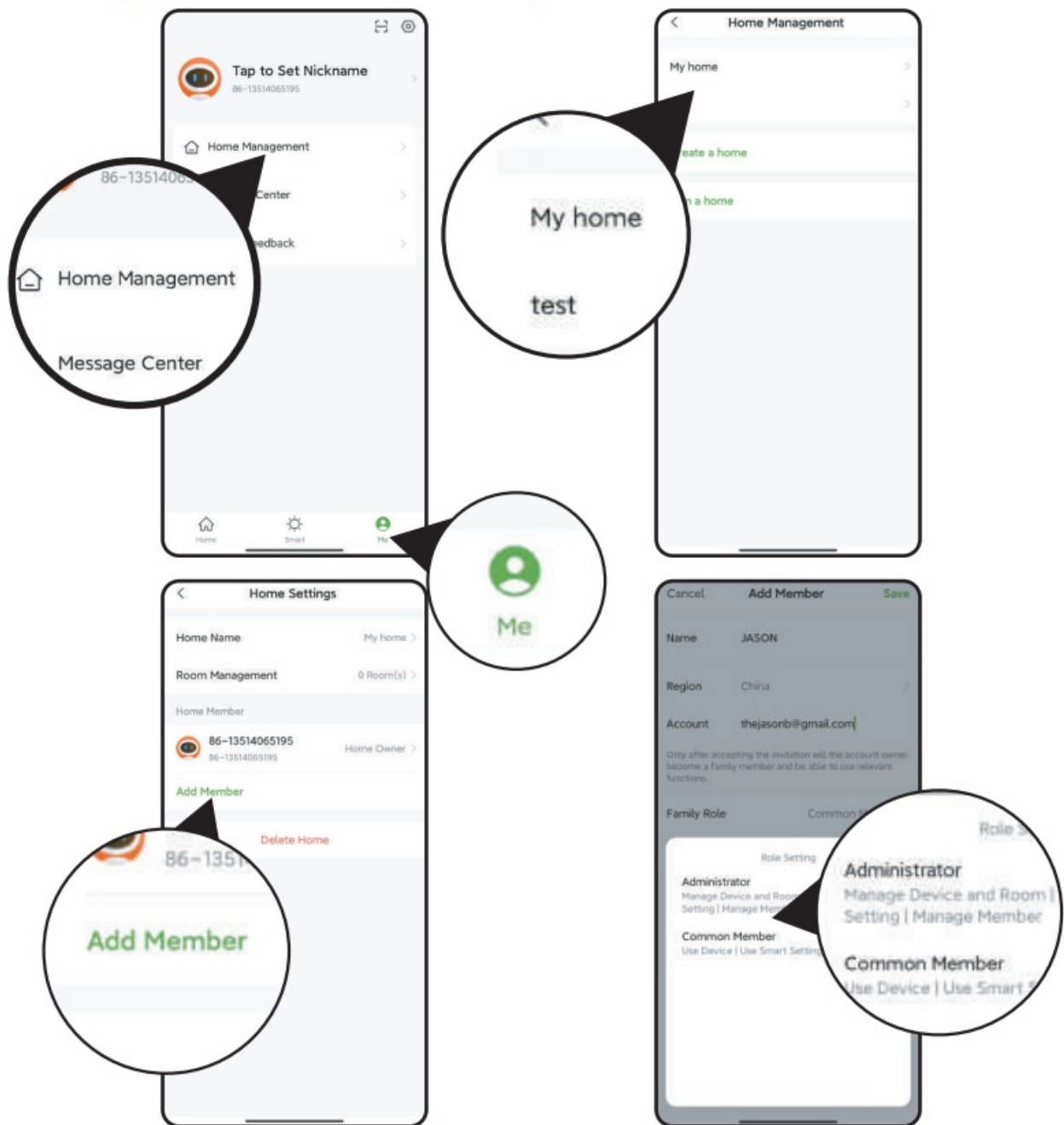
Steps To Set Automation Or Tap-To-Run

1. Set a condition: According to your needs, set the conditions for automation or tap-to-run.
2. Set tasks: Set the tasks that the device needs to perform when the conditions are met.
3. Save the settings: The device will automatically execute according to what you set.



Home Management

1. Tap Me at the bottom of the APP home screen.
2. Select Home Management.
3. Set your home name, room management and home location



RESET THE DEVICE

Step 1. Power OFF or Remove the Bluetooth Hub from the power source.

Step 2. After 10 seconds, power on or plug the Bluetooth hub to the power source.

Step 3. Press and hold the middle button on the Bluetooth hub without releasing the button until the indicator light quickly flashed (2 times per second), then the Bluetooth hub is restored to pair mode

How to reset the Bluetooth Irrigation Timer ?

Step 1. Remove all batteries from the battery compartment.

Step 2. After 10 seconds, insert 3 fresh AAA(1.5V alkaline batteries into the battery compartment of the timer.

Step 3. Press and hold the button on the timer without releasing the button until the blue LED indicator quickly flashed (2 times per second), then the Bluetooth timer is restored to pair mode.

TROUBLE SHOOTING

Issue	Possible Cause	Advice
1. Can't turn on /off the valve	<ol style="list-style-type: none"> 1. Low battery 2. Impurities in water inlet 3. Unstable network or delayed response 	<ol style="list-style-type: none"> 1. Replace fresh batteries . 2. Regularly clean the filter port of impurities to avoid disruptions in use. 3. Wait a while and try again.
2. Timer won't connect	<ol style="list-style-type: none"> 1. Unstable WIFI network 2. Long distance from the hub 	<ol style="list-style-type: none"> 1. Check that the WIFI network environment is working. 2. Close to hubs and routers when connected to irrigation timers. 3. Repair the timer: Press the button until the white light flashes rapidly. (Or remove the device then reconnect)
3. Hub cannot connect	<ol style="list-style-type: none"> 1. Not using 2.4GHZ WIFI 2. Incorrect WIFI password 3. Hub not in pairing state 	<ol style="list-style-type: none"> 1. Confirm 2.4GHZ WIFI connection. 2. Confirm that the WIFI password has been entered correctly. 3. Press and hold the button and insert it into the socket again. After that, the red and blue indicator lights start flashing rapidly means pairing has been entered.
4. Plan not executed on time	<ol style="list-style-type: none"> 1. There are impurities in the water inlet filter. 2. Set rain delay parameter. 3. Preset automatic mode to close the valve automatically when it rains . 4. In low power state, timer goes into low power protection state and does not execute schedule. 5. No parameters are set for irrigation time/period. 	<ol style="list-style-type: none"> 1. Inlet impurities need to be cleared regularly so that they do not clog up and interfere with the irrigation programme. 2. Check that the rain delay parameter is set. 3. Check that the parameters for automatic mode rain are set. 4. Replace the batteries with new ones. 5. Check that the irrigation time/period is parameterized.

5. The water inlet leakage	1. No filter or not be placed horizontally 2. The faucet is not the Right standard 3/4"	1. Add filter and make sure it's placed horizontally in the inlet. 2. Make sure the faucet is a 3/4" faucet. 3. Strengthen it with Seal tape.
6. Low water pressure	1. Filter blockage. Inlet pressure not sufficient to support watering	1. Check if the filter is clogged, if so, clean or replace the filter. 2. Make sure the timer is installed properly and not cross-threaded. 3. Installation of a booster pump or other auxiliary equipment of increasing pressure.

WARNINGS

1. For outdoor use only. Placing the timer in the sheltered outdoors will prolong its lifetime.
2. To avoid damage, please tighten it without using tools.
3. The filter should be placed horizontally in the water inlet to prevent leakage.
4. When low power, please replace the batteries to avoid the interruption of normal operation; when replacing the batteries, please make sure that the battery tray is dry.
5. When the timer is not in use, please remove the batteries and store it indoors.
6. Don't use the timer under the temperature more than 120°F(50°C), or less than 38°F(3°C).
7. Don't subject the product to extreme force and shock.
8. Severe electrical shock could result if water is sprayed into outlets or sources of electrical current. Never immerse the product in water.

This product is MADE IN CHINA and conforms to the national standards of the United States, Britain, Germany and France. Please use this product correctly. If it needs to be discarded, please properly dispose according to the national requirements. Please protect the environment.

FCC Notice:

FCC STATEMENT: (FCC ID: 2AWDBTTV102B FCC ID: 2AWDBTWG009BW) This device complies with Part 15 of the FCC Rules. Operation is subject to the following two conditions: (1) This device may not cause harmful interference, and (2) this device must accept any interference received, including interference that may cause undesired operation. FCC Warning: Any changes or modifications not expressly approved by the party responsible for compliance could void the user's authority to operate this equipment. Note: This equipment has been tested and found to comply with the limits for a Class B digital device, pursuant to Part 15 of the FCC Rules. These limits are designed to provide reasonable protection against harmful interference in a residential installation. This equipment generates, uses, and can radiate radio frequency energy and, if not installed and used in accordance with the instructions, may cause harmful interference to radio communications. However, there is no guarantee that interference will not occur in a particular installation. If this equipment does cause harmful interference to radio or television reception, which can be determined by turning the equipment off and on, the user is encouraged to try to correct the interference by one of the following measures:

- Reorient or relocate the receiving antenna.
- Increase the separation between the equipment and the receiver.
- Connect the equipment into an outlet on a circuit different from that to which the receiver is connected.
- Consult the dealer or an experienced radio/TV technician for help.

Note: The manufacturer is not responsible for any radio or TV interference caused by unauthorized modifications to this equipment. Such modifications could void the user's authority to operate the equipment.

CUSTOMER SERVICE

Still have trouble with setup, please search for "Rain Point" on YouTube for installation videos!

If the user manual doesn't have what you're looking for or you need other help, please contact us before returning the product to the store and let us know the LOT NO. of your device.

FOR ANY PROBLEMS DURING USE, PLEASE GET SUPPORT FROM US:



Email: service@rainpointus.com



WhatsApp: +1 626-780-5952



US: 1-833-381-5659 (EN)

EU: +44 800-808-5337 (EN DE)



Web: www.rainpointonline.com



Email: service@rainpointus.com



WhatsApp: +1 626-780-5952



US Free Hotline(English):

+1 833-381-5659(MON-FRI 9:30 AM-5:30 PM PST)

UK Free Hotline(English Deutsch):

+44 800-808-5337(MON-FRI 9:00 AM-5:00 PM CET)



Email: service@rainpointus.com

WhatsApp: +1 626-780-5952

US Free Hotline(English): +1 833-381-5659
(MON-FRI 9:30 AM-5:30 PM PST)

UK Free Hotline(English Deutsch): +44 800-808-5337
(MON-FRI 9:00 AM-5:00 PM CET)

EC REP


NAME VIAJE ELECTRONIC COMPANY LIMITED

ADDRESS E588, 13 ADELAIDE ROAD, DUBLIN,

D02 P950, IRELAND

Email VIAJEELE@outlook.com

Documents / Resources

 <p>USER MANUAL <input type="checkbox"/> English <input type="checkbox"/> Español Model: TTV102B-TWG009BW Email: sales@rainpointusa.com Website: www.rainpointusa.com Phone: 1-877-251-2511 Fax: 1-877-251-2511</p>	<p>RainPoint TTV102B Bluetooth Irrigation Timer [pdf] User Manual TTV102B, TWG009BW, TTV102B Bluetooth Irrigation Timer, Bluetooth Irrigation Timer, Irrigation Timer, Timer</p>
---	--

References

- [RP Smart Watering, Sprinkler & Drip Systems | RainPoint Irrigation ... – Rainpoint](#)