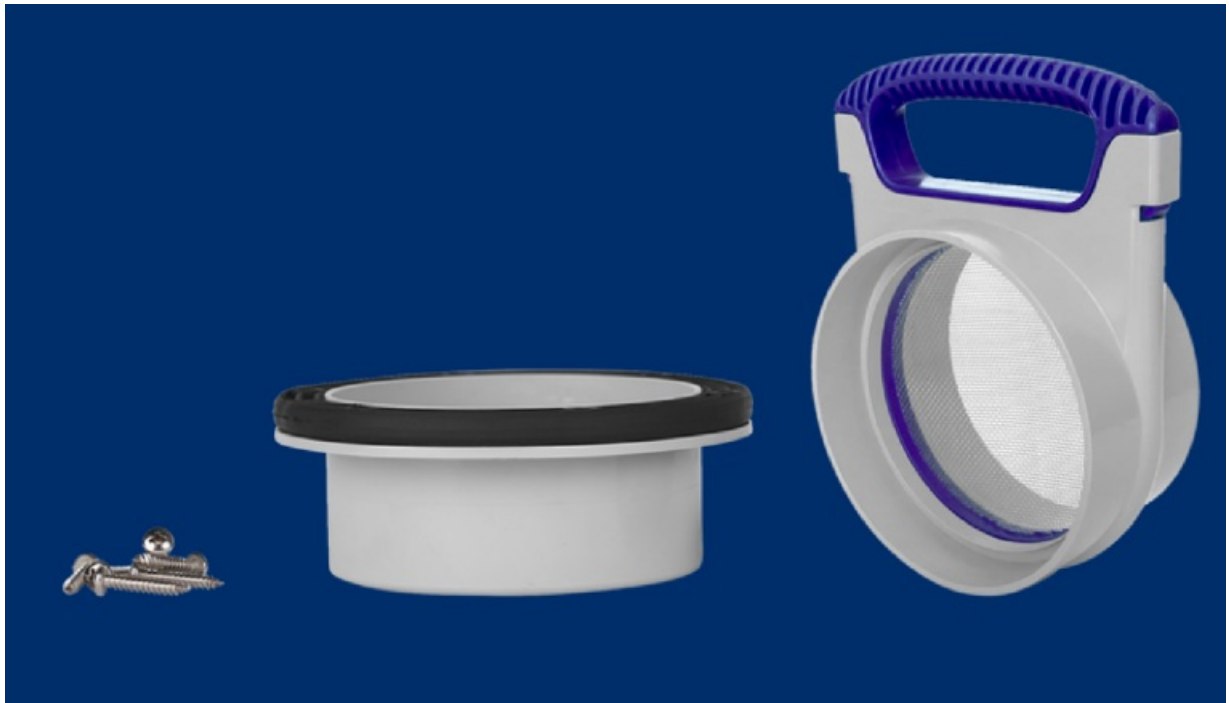


Rain Harvesting TATO49 Flanged Tank Overflow Kit Instructions

[Home](#) » [Rain Harvesting](#) » Rain Harvesting TATO49 Flanged Tank Overflow Kit Instructions 

Rain Harvesting TATO49 Flanged Tank Overflow Kit



Contents

1 PRODUCT DETAILS

2 Installation

2.1 WHAT'S IN THE BOX?

2.2 TOOLS/MATERIALS YOU MAY REQUIRE

3 Product Specifications

4 Maintenance

5 Documents / Resources

6 Related Posts

PRODUCT DETAILS

An all inclusive overflow solution for your tank to keep out pests and increase your tank's capacity.

The straight-through design sets the overflow level at the base of the fitting, which connects directly to the supplied mosquito-proof screen.

The mosquito-proof screen allows for easy maintenance.

Mosquito-proof screens can become blocked over time, which will restrict your overflow's performance. The removable cartridge allows this screen to be removed within seconds, and then washed or brushed clean to keep your system flowing at its best.

Code	Size	Country
TAT049	100mm	Australia

Installation

WHAT'S IN THE BOX?

- Standard Tank Overflow
- Removable Screen Mazzie Stoppa
- Rubber Gasket
- 6 Stainless Steel screws

TOOLS/MATERIALS YOU MAY REQUIRE

- Marker pen
- Holesaw
- Drill
- Screwdriver
- Sealant
- Solvent Weld glue

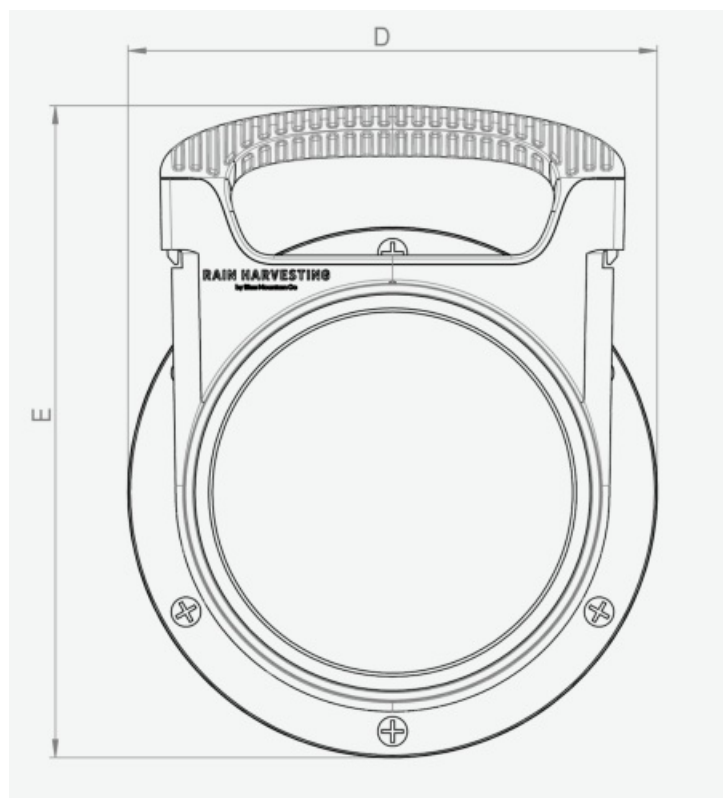
INSTALLATION

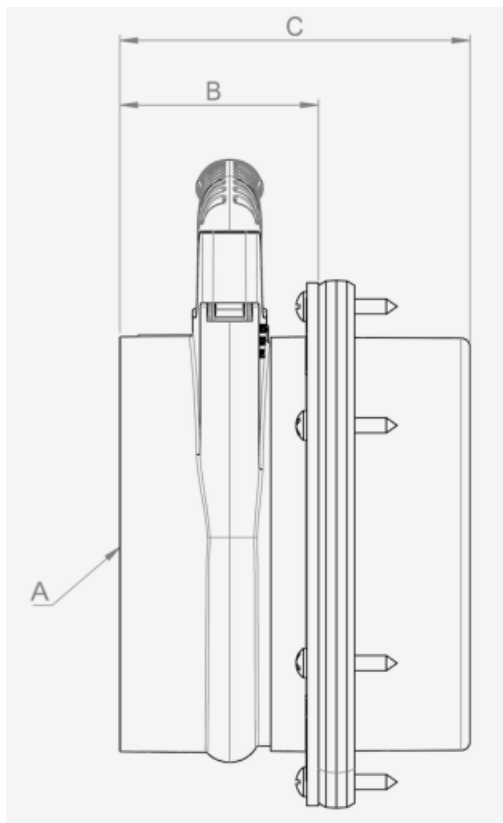
1. If you do not have an existing tank overflow hole in your tank, use your tank overflow outlet as a template to mark the size of the hole you need to cut in the side of your tank, then cut using a hole saw.

- Ensure that the bottom of the hole you cut sits lower than the bottom of the tank inlet and/or tank inlet screen.
2. Ensure that the gasket is fitted firmly around the tank overflow fitting, then push it in place inside the tank overflow hole.
 3. Hold the overflow outlet as you screw it in place, applying equal force to each screw. We recommend alternating between each screw, screwing on opposite sides, and avoiding fully tightening the screws until the end. Be sure not to overtighten the gasket.
 4. Select an installation point for your Removable Screen Mazzie Stoppa. As it will require regular maintenance, we recommend installing in a position that allows for easy access and cleaning . In most cases, the best position will be directly into the overflow outlet of your tank with the handle pointing upwards. Also ensure that the installation position allows the handle to be removed fully.
 5. Prior to gluing, remove the screen from your Mazzie Stoppa, so that there is no chance of glue getting on the mesh.
 6. Use solvent weld glue to install the Removable Screen Mazzie Stoppa, between your overflow outlet and overflow pipe.
 7. Once the solvent weld glue has dried, re-install your mesh cartridge into the Removable Screen Mazzie Stoppa body to secure your system and prevent pests from entering your tank.

Product Specifications

Flanged Tank Overflow Kit w/ Removable Screen Mozzie Stoppa





Country	Code	A	B	C	D	E	Recommended Tank Hole Size
Australia	TATO49	100F	55	97	147	181	118

Fitting guide:

F = Female/ Socket Fitting

M = Male/ Spigot Fitting (Pipe size)

IP= In-Pipe Fitting

Maintenance

Your Removable Screen Mazzie Stoppa is designed to make maintenance and cleaning easy. Remove the mesh cartridge by pulling the handle directly out of the body.

Replace the mesh cartridge immediately after cleaning by firmly inserting it back into the corresponding slot in the body so it continues to form a barrier against mosquitoes, frogs and pests.

Periodically inspect the mesh cartridge a-ring to ensure that the system seal is still performing optimally.



A common misconception about collecting rainwater is that all you need is a roof, a tank and some rain. This 'tanking' approach cannot always be relied on to deliver the volume – or quality – of water that you require. That is where we can help.

With some thought, your rain harvesting system can provide you with cleaner water and lots of it. Whether you're completely reliant on tank water or wanting to keep the garden green, our simple steps will help you achieve your goal.

The Rain Harvesting approach to rainwater collection involves using tested and proven products to make quality

rainwater available for use in and around your property. You don't need much to get started and you will be surprised how easy it is to get the most out of your rainwater system.

How can we help you?

DISCLAIMER The is product specification is not a complete guide to product usage. Further information is available from Rain Harvesting Pty Ltd and from the installation and Operating instructions. This specification sheet must be read in conjunction with the installation and Operating Instructions and all applicable statutory requirement. Product specifications may change without notice.© Rain Harvesting Pty Ltd

RAIN HARVESTING

by Blue Mountain Co


For more information or to find out
how we can help, just give us a call on

+61 7 3248 9600

Or visit our website at

rainharvesting.com

Documents / Resources

	<p>Rain Harvesting TATO49 Flanged Tank Overflow Kit [pdf] Instructions TATO49 Flanged Tank Overflow Kit, TATO49, Flanged Tank Overflow Kit, Tank Overflow Kit, Overflow Kit, Kit</p>
--	---