

RaidSonic
IB-2924MSCL
-C31 Clone
Docking



RaidSonic IB-2924MSCL-C31 Clone Docking Installation Guide

[Home](#) » [RaidSonic](#) » RaidSonic IB-2924MSCL-C31 Clone Docking Installation Guide 

Contents

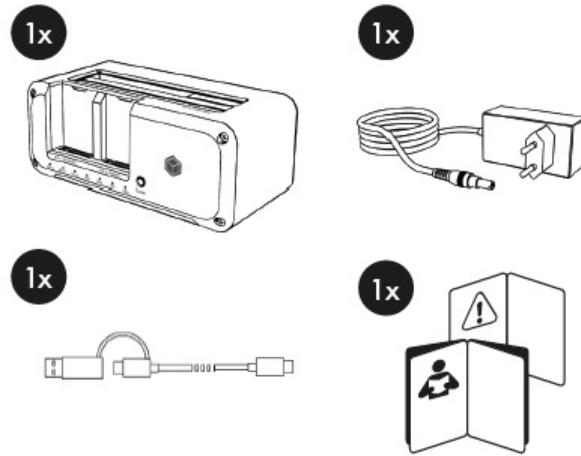
- [1 RaidSonic IB-2924MSCL-C31 Clone Docking](#)
- [2 WHAT's IN THE BOX](#)
- [3 Legacy USB standards](#)
- [4 Mounting Instructions](#)
- [5 Installation](#)
- [6 Documents / Resources](#)
 - [6.1 References](#)

RaidSonic

RaidSonic IB-2924MSCL-C31 Clone Docking



WHAT's IN THE BOX



Legacy USB standards

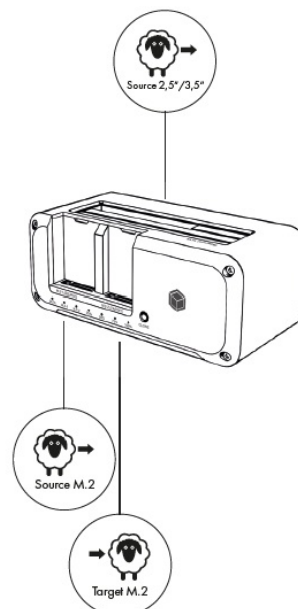
- USB 3.0 = USB 3.1 (Gen 1)
- USB 3.1 = USB 3.1 (Gen 2)
- USB 3.2 (Gen 2x2)

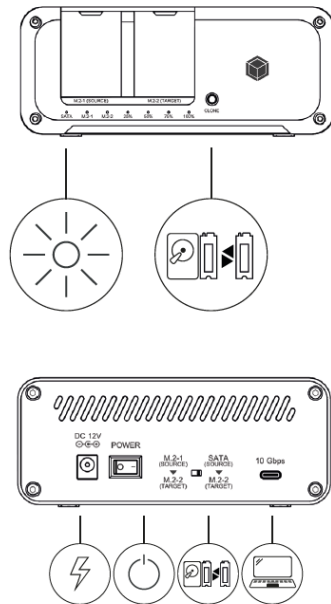
Current USB standards

- = USB 3.2 Gen 1
- = USB 3.2 Gen 2
- = USB4® Gen 3x2

Data transfer rate

- = 5 Gbit/s
- = 10 Gbit/s
- = 20 Gbit/s
- = 40 Gbit/s

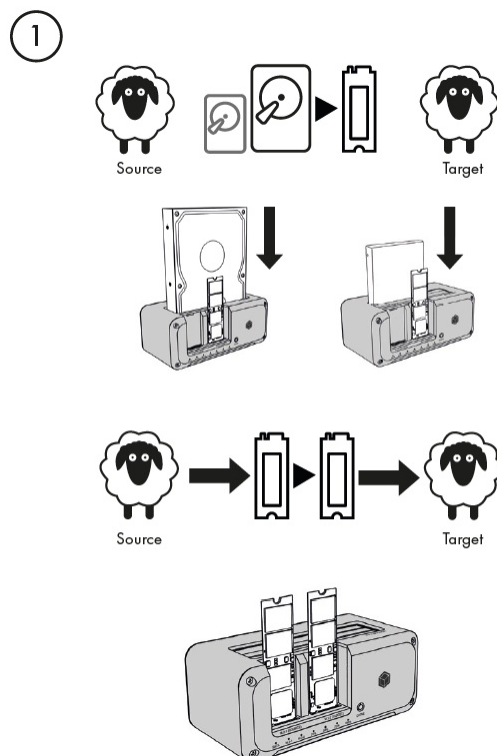


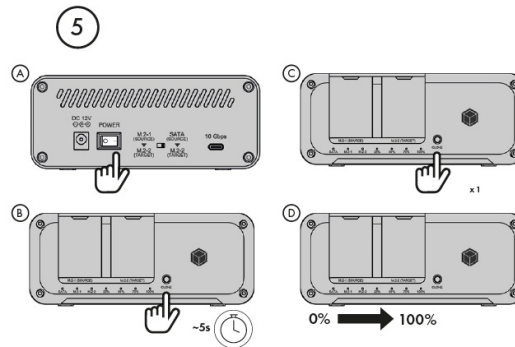
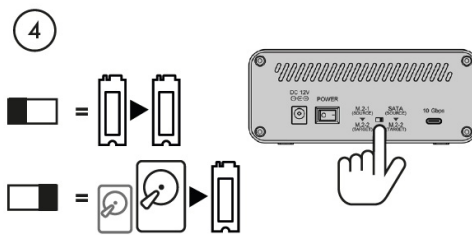
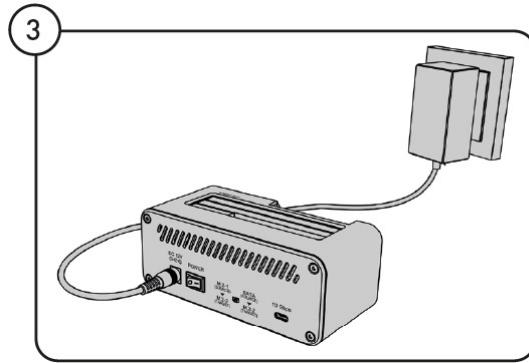
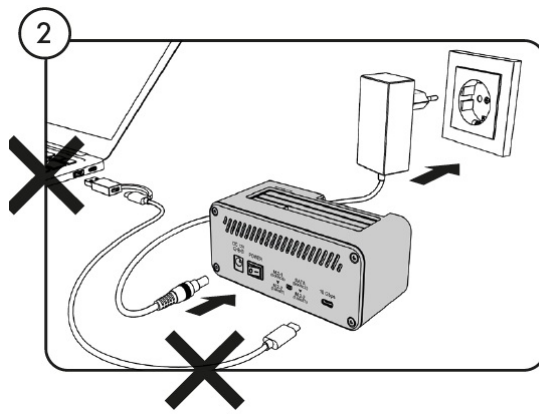


© Copyright 2022 by RaidSonic Technology GmbH. All Rights Reserved.

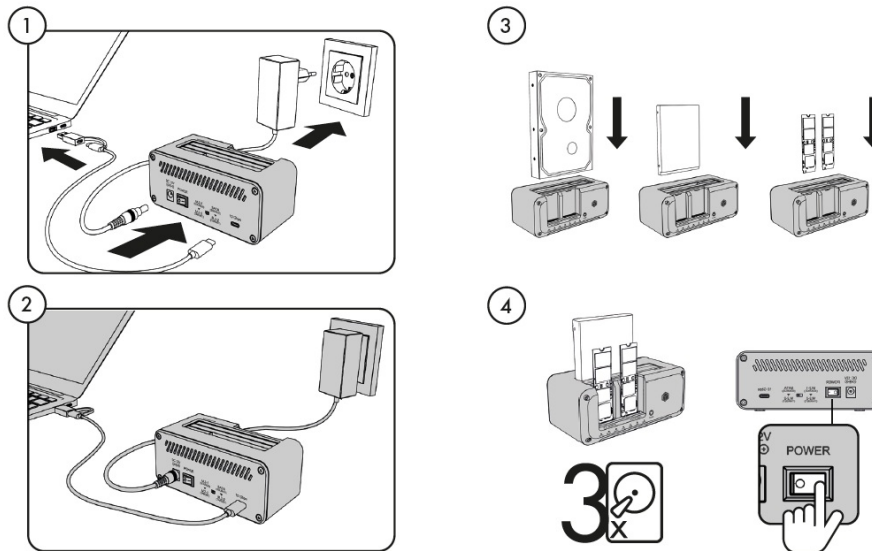
The information contained in this manual is believed to be accurate and reliable. Raid- Sonic Technology GmbH assumes no responsibility for any errors contained in this manual. RaidSonic Technology GmbH reserves the right to make changes in the specific cations and/or design of the above-mentioned product without prior notice. The diagrams contained in this manual may also not fully represent the product that you are using and are there for illustration purposes only. RaidSonic Technology GmbH assumes no responsibility for any differences between the product mentioned in this manual and the product you may have. DisplayLink® is the registered trademark of DisplayLink Corp. in the EU, the US, and other countries DisplayPort™ and the DisplayPort™ logo are trademarks owned by the Video Electronics Standards Association (VESA®) in the United States and other countries. The terms HDMI® and HDMI® High- Defi nition Multimedia Interface, and the HDMI® logo are trademarks or registered trademarks of HDMI® LA, Inc. in the United States and other countries. Apple and macOS are registered trademarks of Apple Computer Inc. Microsoft, Windows and the Windows logo are registered trademarks of Microsoft Corporation.

Mounting Instructions

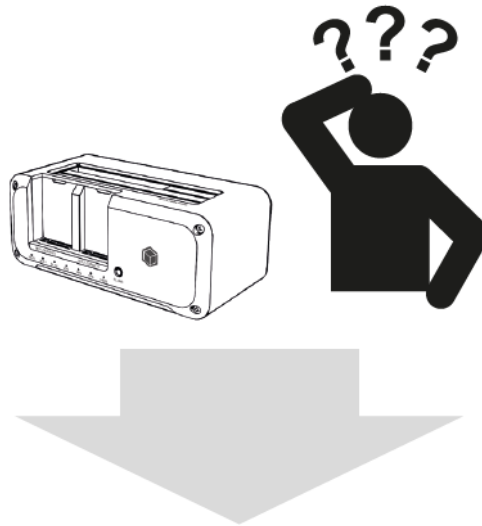




Installation



For any query:



www.icybox.de

Documents / Resources

	<p>RaidSonic IB-2924MSCL-C31 Clone Docking [pdf] Installation Guide IB-2924MSCL-C31, IB-2924MSCL-C31 Clone Docking, IB-2924MSCL-C31, Clone Docking, Doc king</p>
--	--

References

- [User Manual](#)

Manuals+. Privacy Policy

This website is an independent publication and is neither affiliated with nor endorsed by any of the trademark owners. The "Bluetooth®" word mark and logos are registered trademarks owned by Bluetooth SIG, Inc. The "Wi-Fi®" word mark and logos are registered trademarks owned by the Wi-Fi Alliance. Any use of these marks on this website does not imply any affiliation with or endorsement.