

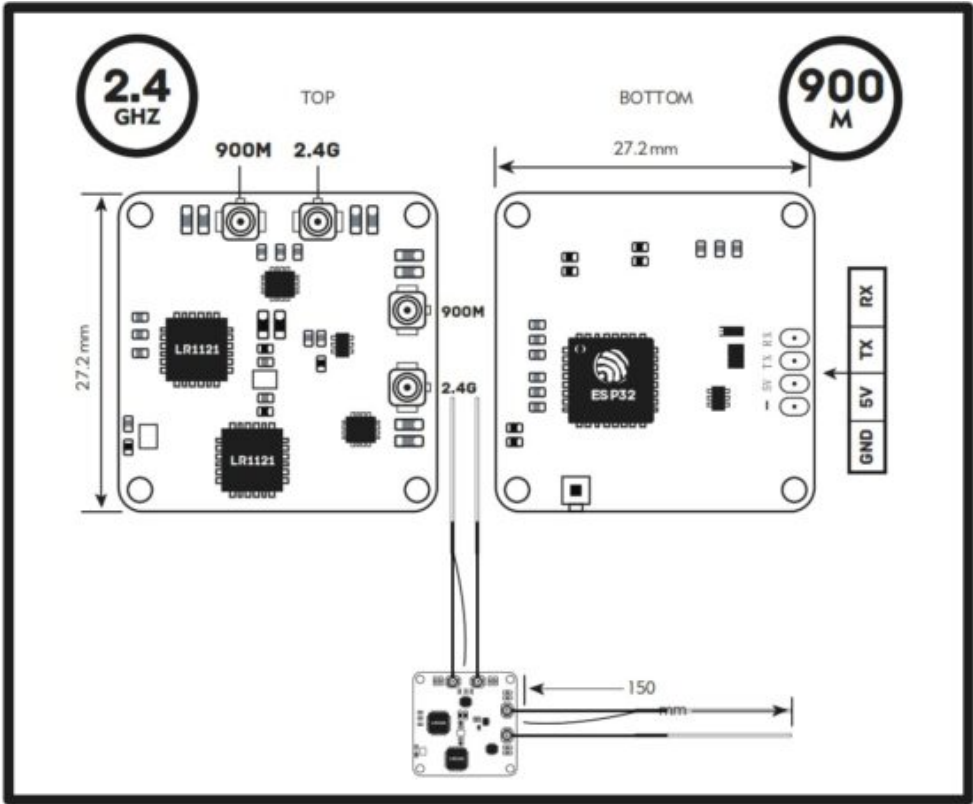


RADIOMASTER DBR4_1.0 Boxer Radio Controller User Manual

[Home](#) » [Radiomaster](#) » RADIOMASTER DBR4_1.0 Boxer Radio Controller User Manual



DBR4 Receiver User Manual



Contents

- 1 SPECIFICATIONS
- 2 INCLUDES
- 3 DEFAULT FIRMWARE
- 4 CONFIGURATION
- 5 TRADITIONAL BINDING
- 6 Documents / Resources
 - 6.1 References

SPECIFICATIONS

- Item: DBR4 Dual Band Xross Gemini Express LRS Receiver
- Type: ISM 2.4G/ FCC 915M
- MCU: ESP32
- RF chip: Semtech LR1121 x 2
- Telemetry RF power: Max 100mw
- Antenna: 2x 2.4GHz wire & 2x 915MHz wire
- Frequency Range: 2.404 – 2.479 GHz / 903.5 – 926.9 MHz
- Maximum receive refresh rate: 500Hz (1000Hz coming soon in Express LRS V3.4)
- Minimum receiver refresh rate: 50Hz
- Working voltage: DC 4.5 – 8.4V
- Weight: Without antennas 2.70g / With antennas 5.30g
- Dimension: 27. 20*27. 20mm
- Firmware Version: Express LRS v3.3.2 pre-installed
- Bus interface: CRSF

INCLUDES


- 1 * DBR4 Dual band Xross Gemini ExpressLRS Receiver
- 2 * 2.4 GHz wire antenna
- 2 * 915 MHz wire antenna
- 1 * CRSF wire
- 4 * 4mm Red vibration dampeners
- 4 * 3mm Black vibration dampeners
- 1 * Manual card

DEFAULT FIRMWARE

RadioMaster DBR4 Dual band Xross Gemini Receiver

For more information, please visit the ELRS website: <https://www.expresslrs.org/2.0/>

CONFIGURATION

Identifier	Configuration/MSP	Serial RX
USB VCP	<input checked="" type="checkbox"/> 115200 ▼	<input type="checkbox"/>
UART1	<input type="checkbox"/> 115200 ▼	<input type="checkbox"/>
UART2	<input type="checkbox"/> 115200 ▼	<input checked="" type="checkbox"/> 

Open Betaflight Configurator, go to Ports tab and enable the corresponding UART as a Serial RX (e.g. UART2 as shown above). Save and Restart.

Receiver

Serial (via UART) ▼

Receiver Mode

- The UART for the receiver must be set to 'Serial Rx' (in the *Ports* tab)
- Select the correct data format from the drop-down, below:

CRSF ▼

Serial Receiver Provider

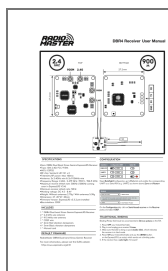
On the Configuration tab, click on Serial-based receiver on the Receiver panel, and select CRSF.

TRADITIONAL BINDING

Binding Phrase field must be uncommented in Device options on the RX.

1. Power OFF your transmitter/radio.
2. Plug in and unplug your receiver 3 times.
3. Make sure the LED is doing a quick double blink, which indicates the receiver is in bind mode.
4. Power ON your transmitter/radio and use the [BIND] button on the ExpressLRS Lua script, which sends out a binding pulse.
5. If the receiver has a solid light, it's bound!

Documents / Resources



[RADIOMASTER DBR4_1.0 Boxer Radio Controller](#) [pdf] User Manual
DBR4_1.0, RP3, DBR4_1.0 Boxer Radio Controller, DBR4_1.0, Boxer Radio Controller, Radio Controller, Controller

References

-  [Redirecting...](#)
- [User Manual](#)

Manuals+. Privacy Policy

This website is an independent publication and is neither affiliated with nor endorsed by any of the trademark owners. The "Bluetooth®" word mark and logos are registered trademarks owned by Bluetooth SIG, Inc. The "Wi-Fi®" word mark and logos are registered trademarks owned by the Wi-Fi Alliance. Any use of these marks on this website does not imply any affiliation with or endorsement.