



RADIANCE SC1800 Plus Smart Infrared Space Heater Instruction Manual

[Home](#) » [RADIANCE](#) » RADIANCE SC1800 Plus Smart Infrared Space Heater Instruction Manual 

RADIANCE SC1800 Plus Smart Infrared Space Heater

Contents

- 1 Installation & Operation Instructions
 - 1.1 Notice to Purchaser
 - 1.2 General Introduction
 - 1.3 Safety instructions
 - 1.4 How to care for your Radiance heater
 - 1.5 Installation & Operation Guide
 - 1.6 Warranty
- 2 Documents / Resources
 - 2.1 References
- 3 Related Posts



Installation & Operation Instructions

Panels covered by these instructions are listed in the table below.

| Model | Power | Size | Weight | Mounting | Build-in thermostat receiver | IP Protection |
|-------------|-------|-------------|--------|--------------|------------------------------|---------------|
| SC1800-Plus | 1800W | 137*16*12cm | 7Kg | Wall/Ceiling | Yes | IP44 |
| SC2400-Plus | 2400W | 157*16*12cm | 8Kg | Wall/Ceiling | Yes | IP44 |

Notice to Purchaser

Thanks for purchasing this Radiance infrared heater. We hope you enjoy this innovative technology and that this product will bring a pleasant atmosphere to your home.

Please read these instructions carefully and keep safe for future use. Failure to comply with these instructions will void your warranty. Do not disassemble or tamper with the product at any time! Please pay special attention to the safety instructions and use the heater according to these instructions. Radiance Technology Ltd. shall not be liable for any damage or loss occurred resulting from failure to follow these instructions.

General Introduction

than traditional convection heaters.

The Radiance Plus series represents a new generation of infrared panel heaters, equipped with a built-in thermostat receiver inside of the junction box (Article Number: Receiver01) on the backside of the panel. It needs to be used in conjunction with the Radiance control system – Smart 1.0/ Smart 1.0Pro or Smartplug (NOT included in the box) – in order to meet the Ecodesign legislation of the EU/EC Directive 2009/125/EC.

You may find detailed specifications and instructions in the manual of Smart 1.0/1.0Pro or SmartPlug separate from this manual.

This product complies with the LVD guideline 2014/35/EU and the EMC guideline 2014/30/EU and meets the following standards:

EN 60335-1:2012/A2:2019

EN 60335-2-30:2009/A12:2020

EN 62233:2008

AfPS GS 2019:01 PAK

EN 55014-1:2017/A11:2020

EN 55014-2:2015

EN IEC 61000-3-2:2019

EN 61000-3-3:2013/A1:2019

2014/53/EU RED (LVD 2014/35/EU & EMC 2014/30/EU)

2011/65/EU, 2015/865/EU RoHS

2015/1188/EC Erp

Read the installation and operating instructions completely before starting any installation works and save the instructions for later use.



Safety instructions

TO REDUCE THE RISK OF FIRE, ELECTRIC SHOCK OR INJURY:

Product related safety warnings

- Radiance infrared heaters operate at a surface temperature of around 350°C when wall mounted.
Do NOT touch the heater when switched on.
- Prolonged contact may cause injuries or burns.
- Do NOT cover the heater with anything. Covering may cause overheating and can result in fire .
- The heater should NOT be used to dry textiles and no objects shall be placed or leaned against the heater.
- Keep a distance of at least 40cm in the front and 20cm on the sides to any object, wall or ceiling.
Failure to do so will cause heat to build up behind the heater and will void your warranty.

Dangers for children and persons with limited abilities

- Children or persons with limited physical, mental or sensory abilities shall not be operating, switching on, plugging in, regulating or cleaning the heater.
- Small children should be kept away from the heater unless constantly supervised.
- Do NOT operate the heater in small rooms when occupied by people not capable of leaving the room by themselves. The surface of the heater can reach a surface temperature of up to 95°C, keep out of reach of children and disabled persons.
- Keep away babies and children from all packaging material such as plastic bags to avoid danger of suffocation.

Electric safety directions

- When installing, repairing or servicing the heater it must be turned off and disconnected from power. Before installation please check if the heater is free of damages.
- If the heater or the power cord is damaged in any form do NOT use the heater and contact your Radiance dealer for repair or replacement. Repairs, maintenance or any changes must be carried out by an authorized

Radiance dealer.

- Do NOT attempt to repair the heater by yourself, this will void your warranty.
- If the heater has been dropped do NOT operate it and contact your Radiance dealer to make sure it is free of any damages.
- Radiance heaters are designed to operate at 220-240V, 50Hz AC. If your supply mains do not comply with this, do NOT use the heater.

Water Proof

Radiance infrared heaters have different IP ratings on different models. Please make sure to only install heaters with IP44 rating in humid rooms. Please carefully check the specifications to confirm if your heater is suitable for installation in humid rooms.

Radiance shall not be liable for any injuries or damages resulting from inadequate mounting or incorrect positioning close to water sources.

How to care for your Radiance heater

Cleaning

Always unplug your heater and let it cool down completely before cleaning. Never dip into water and never splash water on it. Clean the heater with a soft damp cloth. For glass models such as the GD-Plus, MD-Plus series use a soft cloth and glass cleaner. Never use a wet cloth and make sure to dry the heater when clean with a dry cloth. Do not use any abrasive materials, solvents or harsh cleaning sponges as this could cause scratches or other irreparable damage. Before operating the heater again it must be completely dry.

Using/Working

- Please note that the heater may discolor with use. This is due to airborne pollution and is not a fault. If you wish to add a picture print to your heater please contact a Radiance dealer. Do not cover your heater with a picture foil and do not paint or print the heater yourself. This might cause damage to the heating element and will void your warranty.
- This heater might emit a slight smell during first time use. This is normal due to the high surface temperature of the material. The smell will disappear after few times using the heater.
- When turning on or off the heater, the heater might have a small clicking noise, this is normal due to material expansion.

Repair

Repairs must be carried out by authorised Radiance dealers or by Radiance directly. If you attempt to alter the product or to proceed with any repairs yourself it will void your warranty.

Disposal



■ Radiance infrared heaters are electric appliances and therefore electric waste. At the end of its working life please dispose the heater in accordance with local regulations concerning electric waste.

Description

This heater is equipped with our built-in thermostat receiver – Receiver01 – on the backside of the panel. Before starting the installation, we recommend you to pair the receiver to our remote control as a first step. Follow the guide below to finish the pairing to the Smart control system (e.g. Smart 1.0, Smart 1.0Pro or Smartplug).



On the right see the drawing of the signal lights and button of Receiver01.

1. Pair status signal light (green light)
2. Heating status signal light (red light)
3. “P” button
4. Power switch

Pairing to Radiance Smart control system

Step1: Plug your heater to an electricity outlet, switch the Power switch of Receiver01 on, double press the “P” button and the “Pair signal light” will start to flashing and ready for pairing.

Step2: Power-off the remote control Smart 1.0/Smart 1.0Pro/Smartplug, long press the “SET” button. The “PAIR” signal will show on the screen of the remote control. Wait until the “Pair signal light” stop flashing and glow green to finish the pairing. Now the pairing process is finished and the Receiver01 will only be commanded by the Smart controller.

Note: After the pairing process and once Receiver01 and Smart 1.0/Smart 1.0Pro/Smartplug are paired, the pair signal light will always be on and the Receiver01 will be only commanded by the Smart 1.0/Smart 1.0Pro/Smartplug. One Receiver01 can only pair to one controller, however, One controller can be paired to several Receiver01 if they are in the same room.

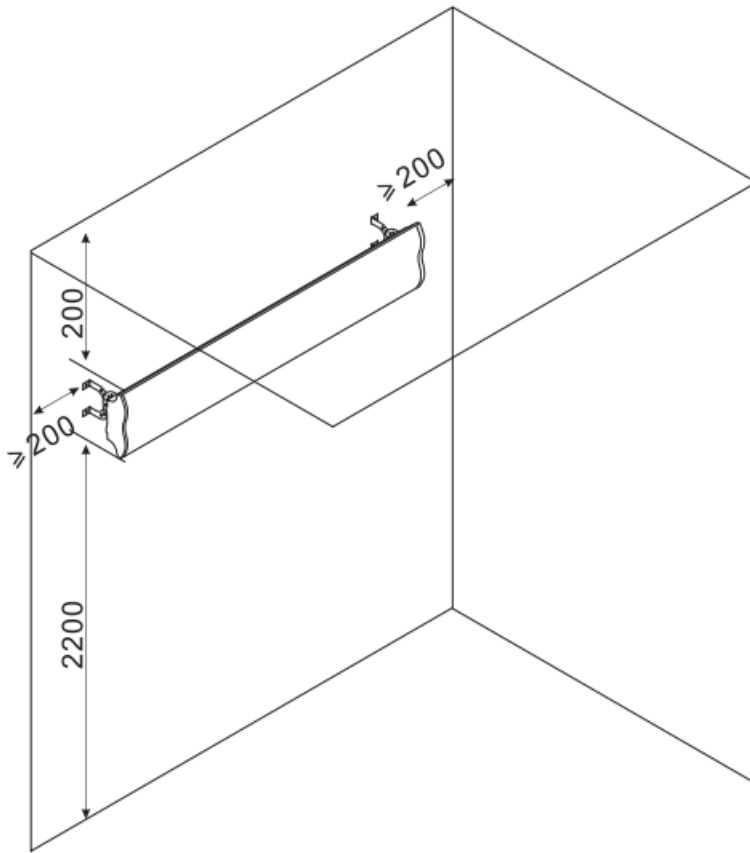
Extra Safety Protection:

The heater is equipped with the Radiance “Extra Safety Protection” function, which will automatically turn off the heater if it lost the signal from the Smart controller for more than one hour. And it will be automatically connected once the Smart controller is within the communication distance.

Bypass mode

Long-press the “P” button on Receiver01 until the “Pair signal light” off and the “Heating status signal light “on, the panel will be reset to bypass mode. On the bypass mode, the Receiver01 is disabled and the panel is connected directly to the electricity.

Installation



Note:

- The kit supplied in the package is designed for mounting on a solid ceiling. If mounted onto other types of ceilings, you will need appropriate fixings (not supplied). Please make sure the ceiling is safe to mount. We highly recommend to have the panel installed by a qualified electrician or installer authorized by Radiance.
- The SC series is a hot temperature infrared heater. It has a surface temperature of 300-350°C when in operation. Please pay special attention and mount them out of reach. On the left, see the drawing of the mounting requirements. When installing the space heater to a ceiling or wall please make sure to keep a distance of at least 20cm to the neighboring walls or ceilings and a minimum distance from the floor of 2.2m.
- The heater is designed to be used in outdoor areas with minimal air movement. If used in areas with strong winds, please note that the heating performance might decrease. As a solution, we suggest to mount the heater closer to the objects you wish to heat to achieve a better performance. Please make sure the heater is protected from rain, it can withstand splash water only.

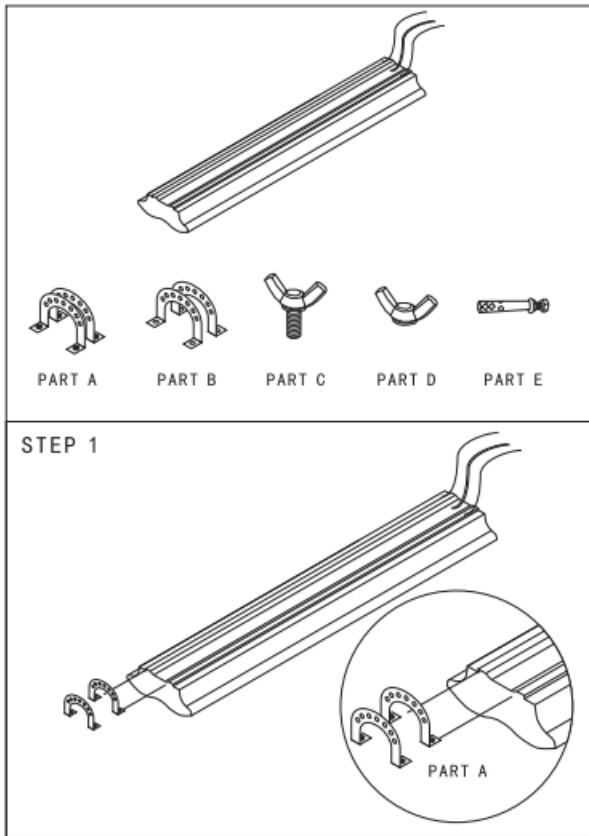
The mounting kit included in this box contains:

Part A: 2x mounting handles **Part B:** 2x mounting handles **Part C:** 8x screws **Part D:** 8x wing nuts

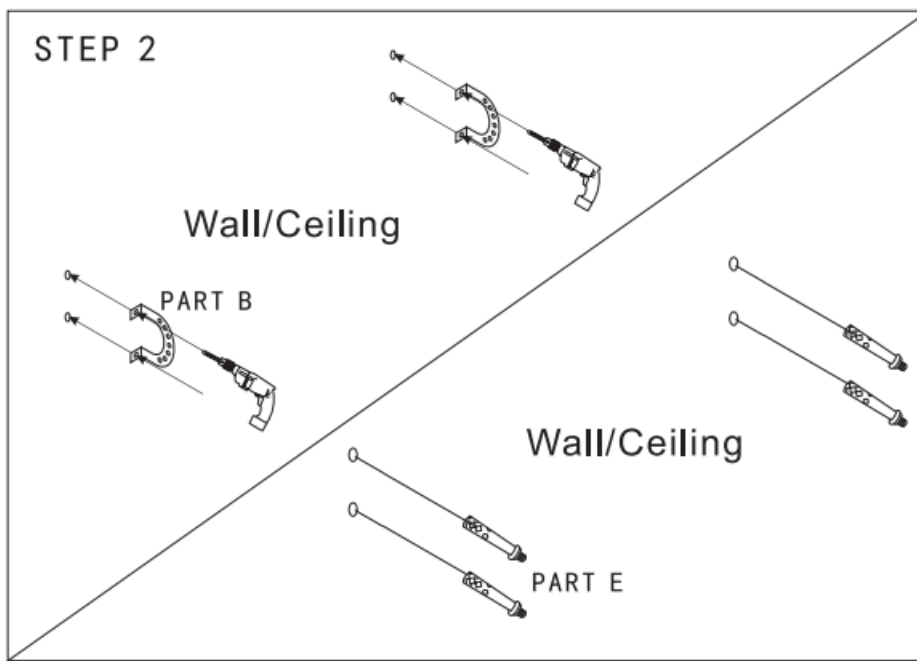
Part E: 4x wall/ceiling anchors

Step 1: Slide the mounting handles (part A) into the rail on the back of the heater from the opposite side of the

cables. Make sure both handles face into the same direction.

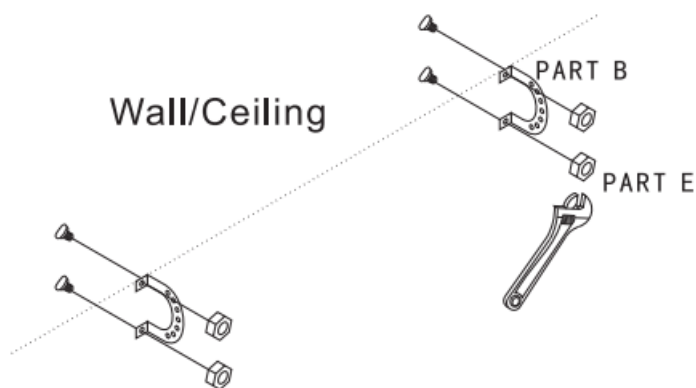


Step 2: Drill four holes into the wall/ceiling, two for each mounting handle (part B). Use the mounting handles as stencils and level them to make sure the heater will hang straight on the wall/ceiling. You can choose the distance between the two handles to your liking but make sure the distance doesn't exceed the length of the heater. Remove the nut from the wall/ceiling anchors (part E) and place the wall/ceiling anchors into the drilled holes.



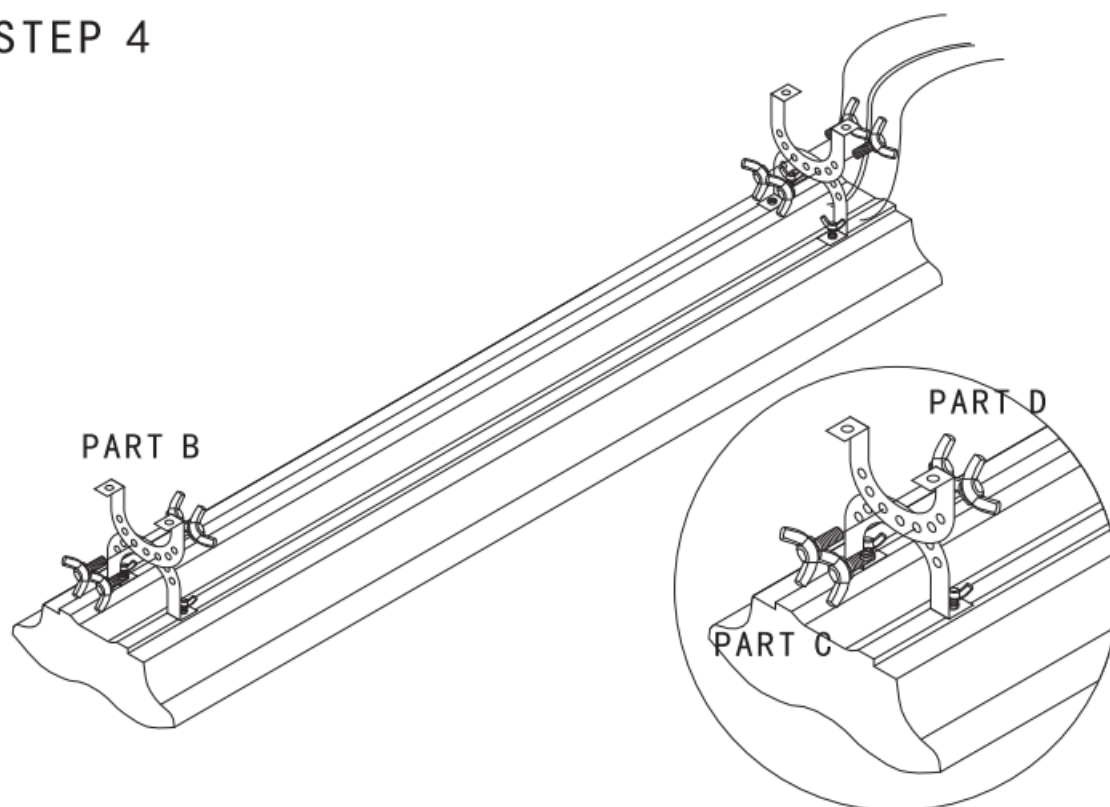
Step 3: Place the mounting handles (part B) onto the wall/ceiling anchors and secure them with the wall/ceiling anchor's nut (part E) using a wrench.

STEP 3



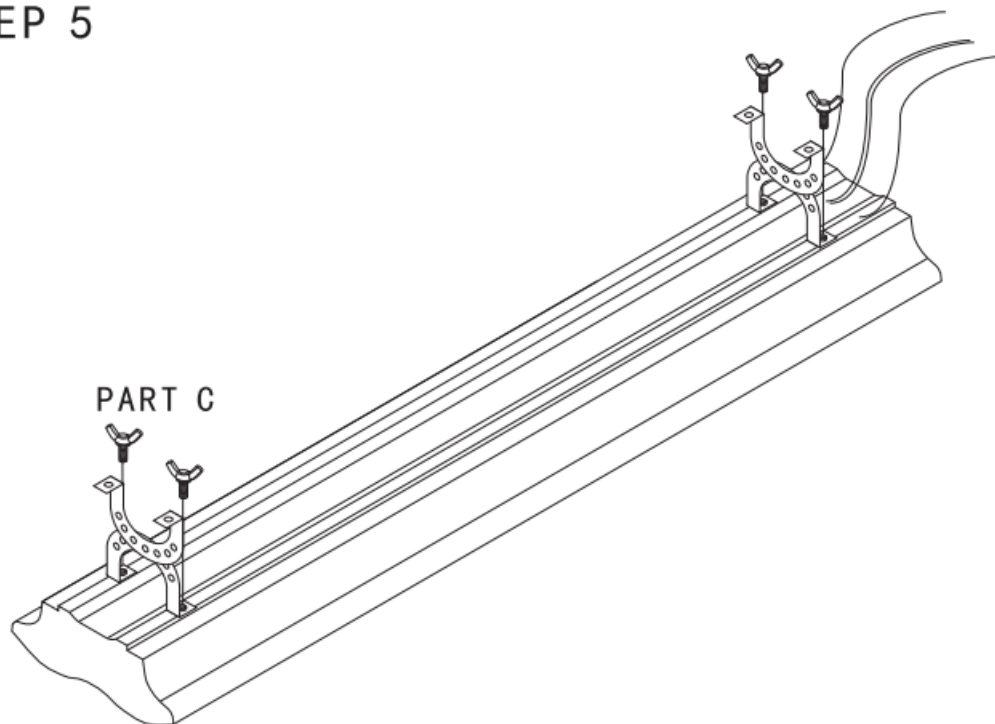
Step 4: Place the heater against the wall/ceiling and attach each of the mounting handles that are mounted on the wall (part B) with the mounting handles attached on the heater (part A). Secure them with two screws (part C) and two wing nuts (part D) on each side. Choose the mounting holes according to the way you want the heater to be directed.

STEP 4



Step 5: Finally secure the mounting handle (part A) to the heater using two screws and two wing nuts on each side. Make sure everything is safely mounted and secured.

STEP 5



Warranty

Radiance offers a 5 year manufacturing warranty on the heating panel and 2 year manufacturing warranty on the control system (including Receiver01, Smart 1.0/Smart 1.0Pro/Smartplug and so on). You can find the serial number on the last page of this user manual. Please always keep this manual in case of future warranty claims. Within the warranty period from date of purchase, Radiance will repair or replace your heater where the fault is due to defects in workmanship or materials. Please contact your local Radiance dealer in the event of a warranty claim and return the heater together with proof of purchase. The warranty covers the repair or replacement of the heater only and Radiance shall not be liable for any other occurring costs such as installation cost or any other consequential losses however incurred. Please note that tampering with or opening the heater in any way will void your warranty. The removal of the serial number on the back of the heater will also void this warranty. All labels on the back of the heater shall not be removed.

Any damages to the heater caused by the user are not covered by this warranty. This includes scratches on the surface or the frame. Radiance is not responsible for any damages, losses or injuries due to ingress of water or moisture, accidental damage, mishandling, external impact, repairs or adjustment by unauthorized persons or failure to follow the correct safety, maintenance and installation precautions stated in this manual.

Information requirement for the electric local space heaters

Models: SC-Plus + Smart1.0/Smart1.0Pro/Smartplug

| Item | Symbol | Value | Unit | Item | Unit |
|--|-------------------|---------|------|--|------|
| Heat output | | | | Type of heat input, for electric storage local space heaters only(Select one) | |
| Nominal heat output | P _{nom} | 1.8-2.4 | kW | manual heat charge control, with integrated thermostat | No |
| Minimum heat output(indicative) | P _{min} | 0,0 | kW | manual heat charge control with room and/or outdoor temperature feedback | No |
| Auxiliary electricity consumption | | | | fan assisted heat output | No |
| At nominal heat output | e _{lmax} | 1.8-2.4 | kW | Type of heat output/room temperature control(select one) | |
| At minimum heat output | e _{lmin} | 0,0 | kW | Single stage heat output and no room temperature control | No |
| In Standby mode | e _{lSB} | 0.001 | kW | two or more manual stages, no room temperature control | No |
| | | | | with mechanic thermostat room temperature control | No |
| | | | | with electronic room temperature control | No |
| | | | | electronic room temperature control plus day timer | No |
| | | | | electronic room temperature control plus week timer | Yes |
| | | | | Other control options(multiple selection possible) | |
| | | | | room temperature control, with presence detection | No |
| | | | | room temperature control, with open window detection | No |
| | | | | with distance control option | Yes |
| | | | | with adaptive start | No |
| | | | | with working time limitation | No |
| | | | | with black bulb sensor | No |

Contact details: The Heating Company +64 9 443 6996

117 Wairau Rd, Wairau Valley or 0800 Heating (432 846) Auckland 0627, New Zealand

info@theheatingcompany.co.nz

The Heating Company Ltd
117 Wairau Rd, Wairau Valley
Auckland 0627, New Zealand
info@theheatingcompany.co.nz
www.theheatingcompany.co.nz

RADIANCE

Documents / Resources

| | |
|---|---|
|  | <p>RADIANCE SC1800 Plus Smart Infrared Space Heater [pdf] Instruction Manual SC1800 Plus Smart Infrared Space Heater, SC1800 Plus, Smart Infrared Space Heater, Infrared Space Heater, Space Heater, Heater</p> |
|---|---|

References

- [✱ Heating & Ventilation Solutions New Zealand | The Heating Company](#)

Manuals+.