



Rabo CH01 Catlog Home Device User Manual

[Home](#) » [Rabo](#) » Rabo CH01 Catlog Home Device User Manual 

Contents

- [1 Rabo CH01 Catlog Home Device](#)
- [2 Specifications](#)
- [3 FCC Compliant Statement](#)
- [4 How to set up Catlog Home](#)
- [5 Documents / Resources](#)
- [6 Related Posts](#)

RABO

Rabo CH01 Catlog Home Device



Specifications

Main power source	DC5V (microUSB)
System operating voltage	3.3V
Sensor	Thermal sensor
Device size	W73xD78.1xH21.8 (mm)
microUSB cable length	1m
Device weight	65g±3.25g

- Lead-free process
- Uses Bluetooth 5.0 module
- Measures room temperature
- Collect acceleration data acquired on Catlog Pendant via BLE and send it to the data server via wireless LAN

FCC Compliant Statement

This device complies with part 15 of the FCC Rules. Operation is subject to the following two conditions: (1) This device may not cause harmful interference, and (2) this device must accept any interference received, including interference that may cause undesired operation.

Note:

This equipment has been tested and found to comply with the limits for a Class B digital device, pursuant to part 15 of the FCC Rules. These limits are designed to provide reasonable protection against harmful interference in a

residential installation. This equipment generates, uses and can radiate radio frequency energy and, if not installed and used in accordance with the instructions, may cause harmful interference to radio communications. However, there is no guarantee that interference will not occur in a particular installation. If this equipment does cause harmful interference to radio or television reception, which can be determined by turning the equipment off and on, the user is encouraged to try to correct the interference by one or more of the following measures:

- Reorient or relocate the receiving antenna.
- Increase the separation between the equipment and receiver.
- Connect the equipment into an outlet on a circuit different from that to which the receiver is connected.
- Consult the dealer or an experienced radio/TV technician for help.

This equipment complies with FCC radiation exposure limits set forth for an uncontrolled environment. This equipment should be installed and operated with minimum distance 20cm between the radiator & your body.

Note

The actual app and contents will not be in English. Please use this document as a reference when using the app. If there are any issues or questions, please contact me.

How to set up Catlog Home



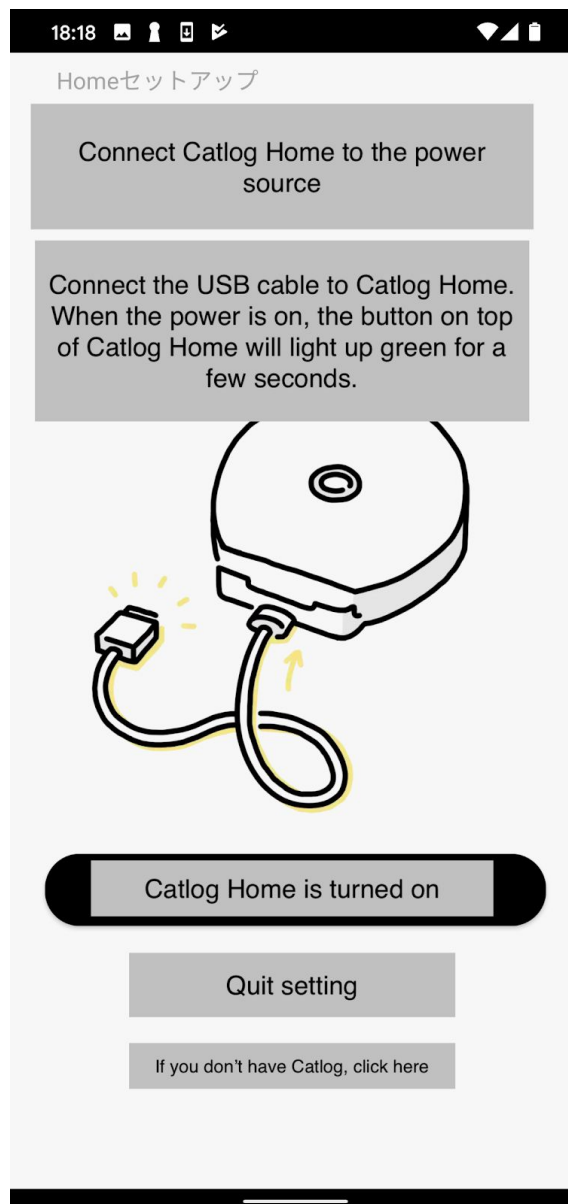
The very first screen. Please press the “Begin” button.

The screenshot shows a mobile application interface for creating a new account. At the top, there is a black status bar with the time 18:15 and various icons. Below the status bar is a white header with a back arrow. The main content area is a light gray rectangle containing the following elements: a title 'Create a new Catlog account' in a gray box; four input fields with gray labels: 'Your name', 'Email address', 'Password', and 'Password (recheck)'; a gray box with the text 'Please read the terms of service and privacy policy'; and a dark gray rounded button with the text 'Agree to the terms of service and begin'. At the bottom of the screen is a black home indicator bar.

Please create a new account. You need to input

- Name
- Email address
- Password

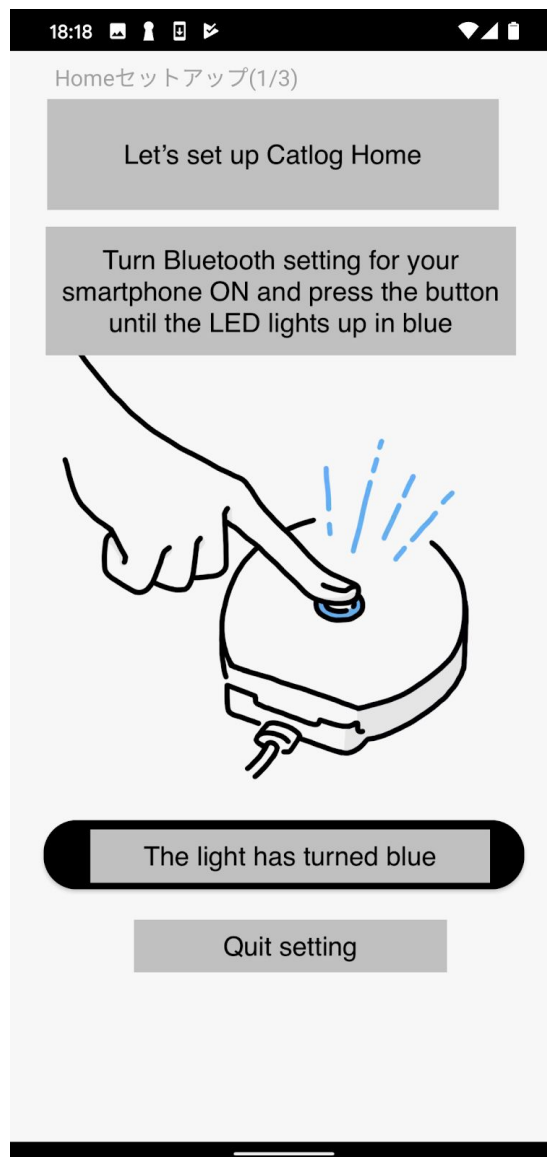
We do not have terms of service and privacy policy in English yet. Please let me know if you need to read this first. Please press “Agree to the terms of service and begin” button.



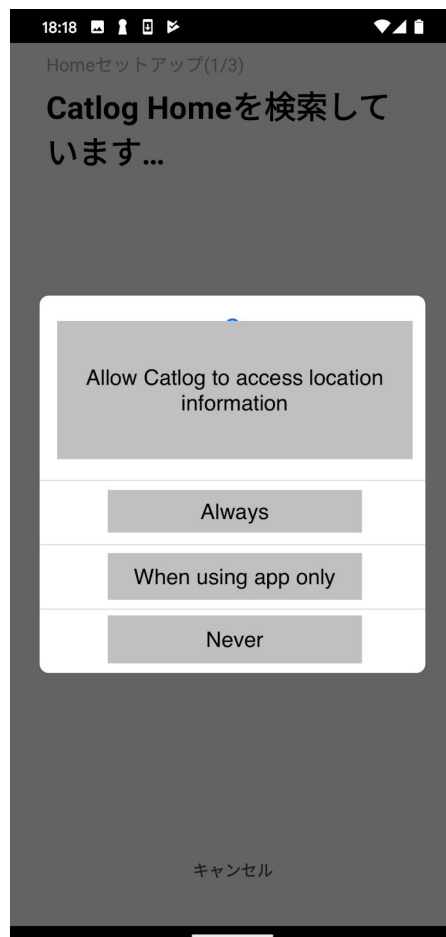
Please connect Catalog Home to a power outlet. Catalog Home will turn on automatically and LED will light up green, then the light will turn off. When the LED lights up green, press the “Catalog Home is turned on” button and proceed.

Example of when Catalog Home is turned on:

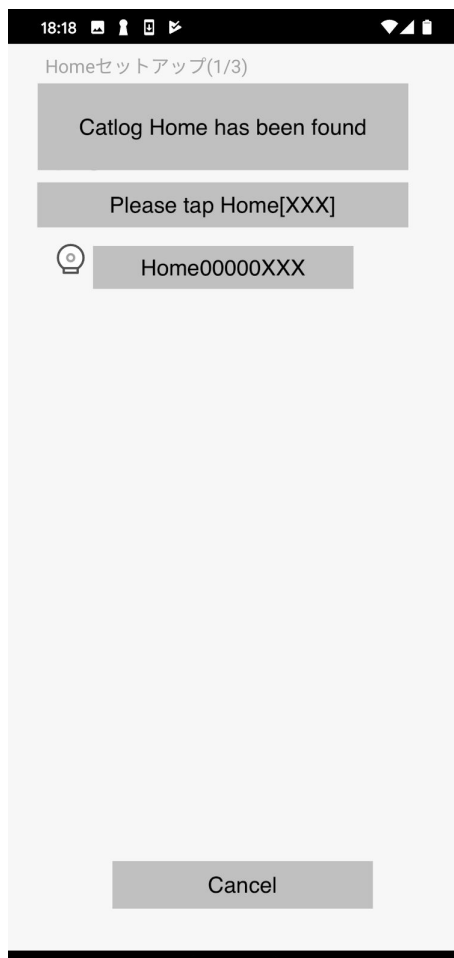




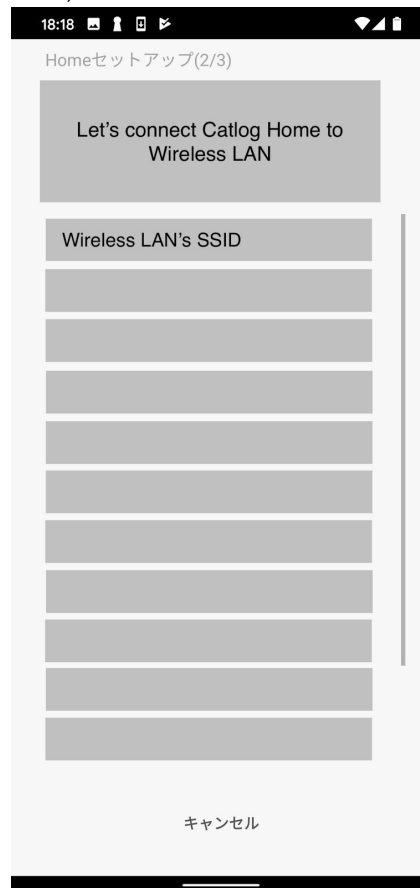
Make sure your smartphone's Bluetooth is turned on. Press the button until LED turns blue. When the light has turned blue, then press "The light has turned blue" button.



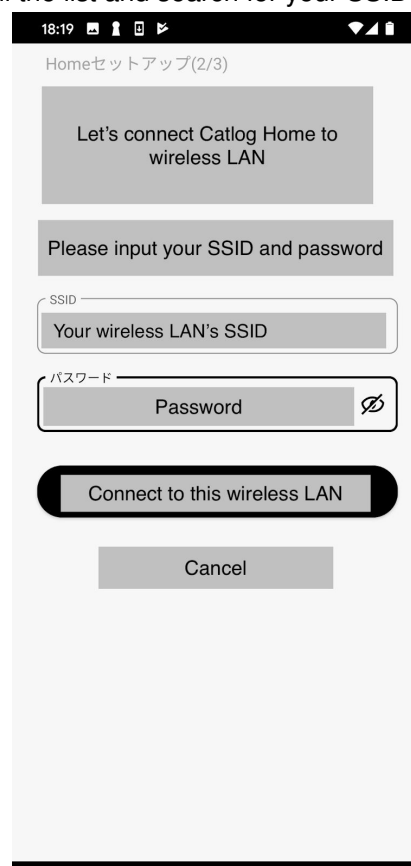
A devices prompt will be shown. It will ask for permission to access your location information. Please select allow this to set up Catalog Home. The exact message depends on what your device is (i.e. Pixel 4 etc.), but please allow Catalog to access location information.



The device will search for Catlog Home. When the Catlog Home is found, the identification number will be shown. Please tap Home's identification number. Example: Home00000XXX (XXX will be a random set of numbers/alphabets dedicated for the device)

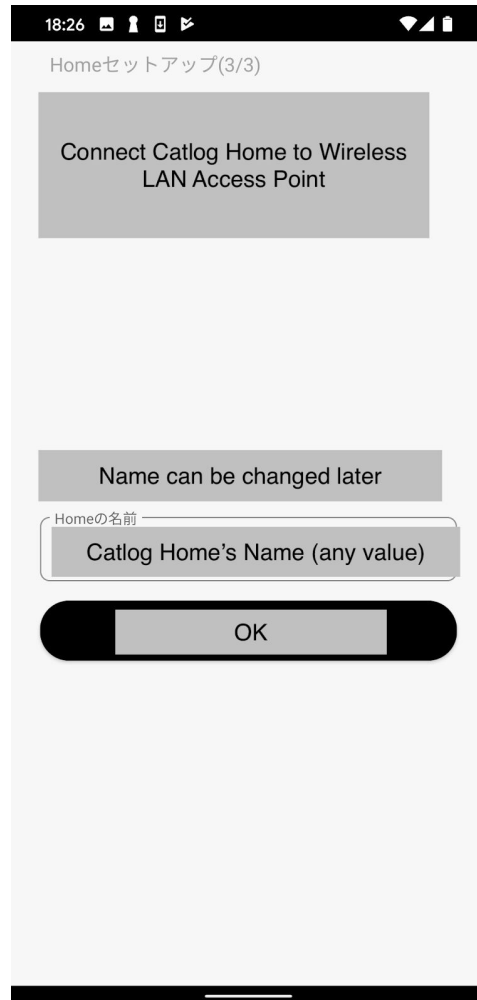


Please select your Wireless LAN's SSID. It may take a little while to find your SSID. Please wait. If your SSID is not shown in the first view, please scroll the list and search for your SSID.



Please enter your wireless LAN's password and press the "Connect to this wireless LAN" button. It may take a

long time for Catalog Home to connect to wireless LAN. If Catlog Home cannot connect, the device may automatically reboot (you will know when Catalog Home's LED turns off, then turns green, then off again). If Catalog Home rebooted automatically, please cancel the setup flow and restart from Step 12.



18:26

Homeセッアップ(3/3)

Connect Catlog Home to Wireless LAN Access Point

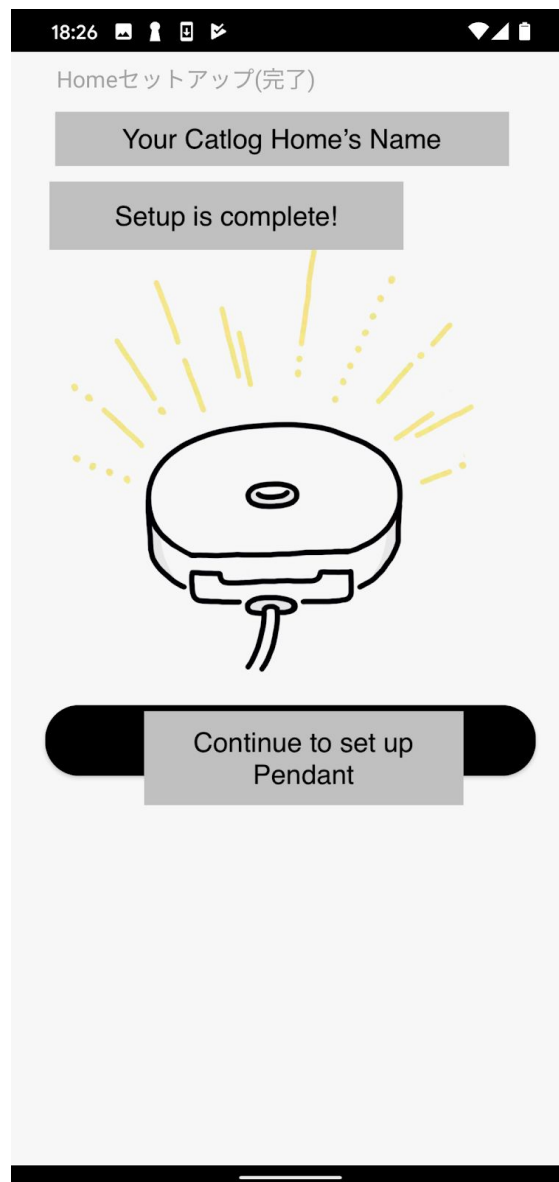
Name can be changed later

Homeの名前

Catlog Home's Name (any value)

OK

When Catalog Home successfully connects to a wireless network, the app will ask you to name your Catlog Home. You can name this Catlog Home however you like. Press "OK" to proceed. Name Example: Living room's Catlog Home.



Setup is complete. Please press “Continue to set up Pendant” button.



When the next screen is shown, please press “Quit setup” at the bottom of the screen. The Catlog Home setup is complete!

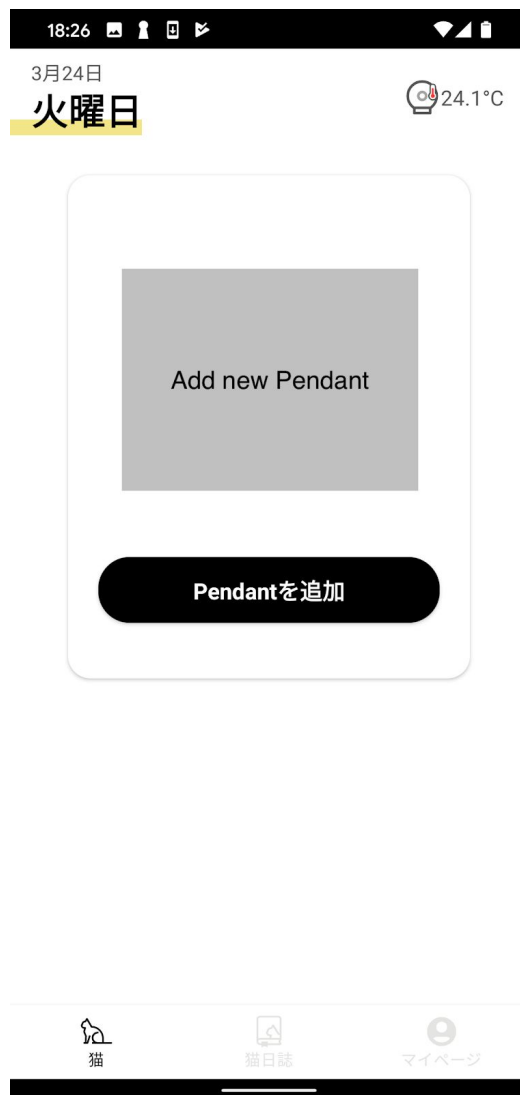


In case if you could not connect Catalog Home to a wireless network, please try this.

1. Cancel the setup flow
2. Kill (terminate) the Catalog app
3. Reboot Catalog Home by unplugging the cable and then plugging in again
4. Open the Catalog app again
5. Tap the “Connect to Catalog Home” button.
6. Start from Step 3 again.

When the wireless network is unstable, it would be difficult for Catlog Home to connect to the network. Please retry the steps above until Catlog Home can connect to the wireless network.

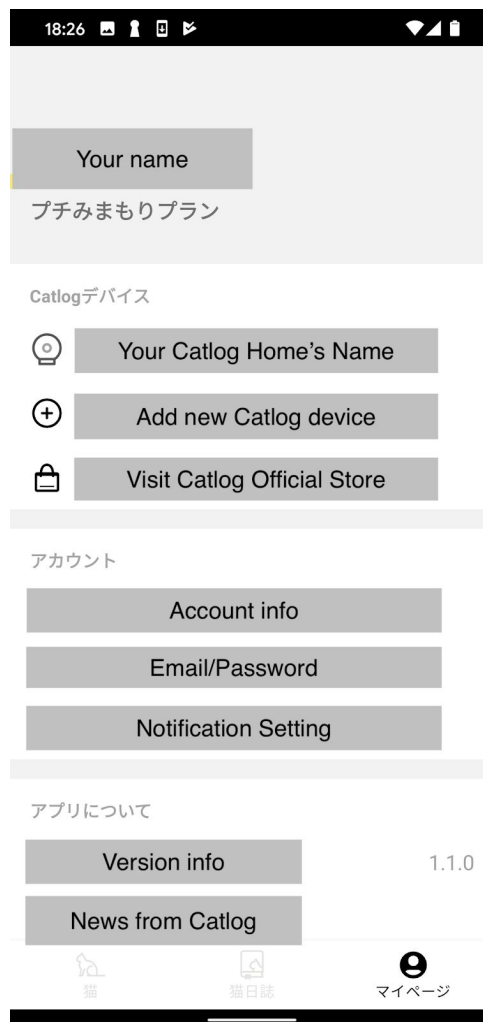
Other app screens



The screen you will see when you finish setting up for Catlog Home. This is the home screen for the app.



This is another screen for users to see when using the devices and app. There will be no data shown.



My page

This page will allow you to adjust settings, etc. If you need more information on specific items, please let me know.



The second half of My Page.

Documents / Resources

<div><div>Catlog Home User Manual</div><div><div>Version: 1.1.0</div><div>File Size: 1.1 MB</div><div>Download</div></div><table><tr><td>Model Name</td><td>CH01</td></tr><tr><td>Release Date</td><td>2023.01.10</td></tr><tr><td>Release Version</td><td>1.1.0</td></tr><tr><td>Release Description</td><td>Initial release</td></tr></table><div>FCC Compliance Statement</div><div>For more information, please refer to the following website.</div><div>For more information, please refer to the following website.</div></div>	Model Name	CH01	Release Date	2023.01.10	Release Version	1.1.0	Release Description	Initial release	<div><div>Rabo CH01 Catlog Home Device [pdf] User Manual</div><div>CH01, 2AXY2-CH01, 2AXY2CH01, CH01 Catlog Home Device, Catlog Home Device</div></div>
Model Name	CH01								
Release Date	2023.01.10								
Release Version	1.1.0								
Release Description	Initial release								