

rabbit
R1 Android-
Powered Device



RABBIT R1 Android-Powered Device User Manual

[Home](#) » [RABBIT](#) » RABBIT R1 Android-Powered Device User Manual 

Contents

- [1 RABBIT R1 Android-Powered Device User Manual](#)
- [2 activate your r1](#)
- [3 discover the basics](#)
- [4 Ask for anything](#)
- [5 Hardware overview](#)
- [6 Regulatory information](#)
- [7 FCC Warning](#)
- [8 References](#)

rabbit

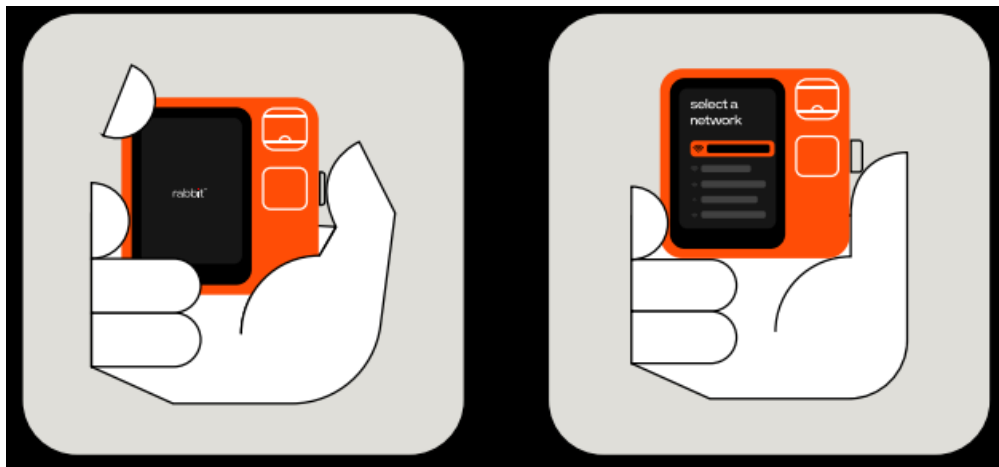
RABBIT R1 Android-Powered Device User Manual



activate your r1

- power on the device hold the button until the cf\$ay turns on to power on the device. Get connected and insert a nano-sim card with a data plan to connect to a cellular network. Otherwise. Follow the steps on the &vice to connect to a wi-fi network.

•



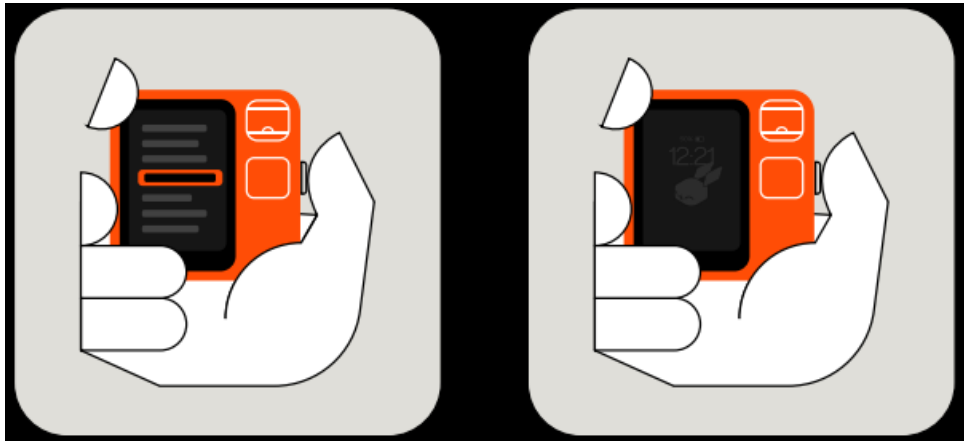
Activate to activate your RL and link it with your services, create a rabbit hole account at rabbit.tech/activate.

Can go back to rabbit hole at hole .rabbit.tech anti meme to manage your connected services

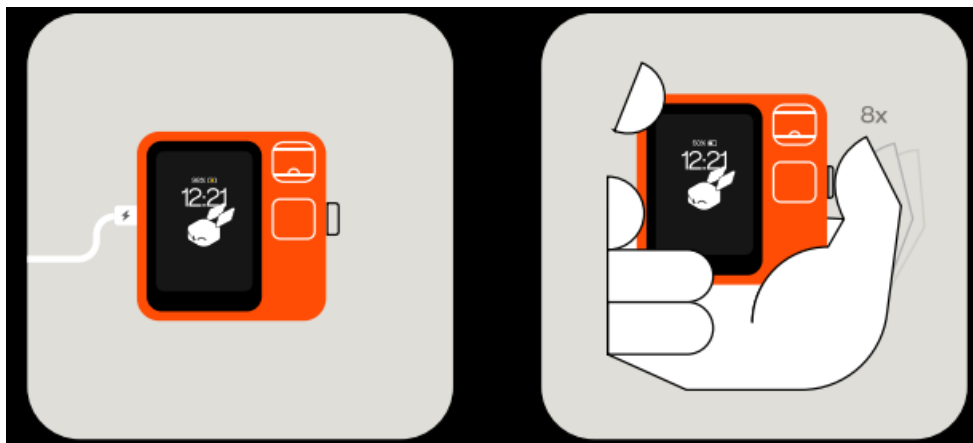


discover the basics

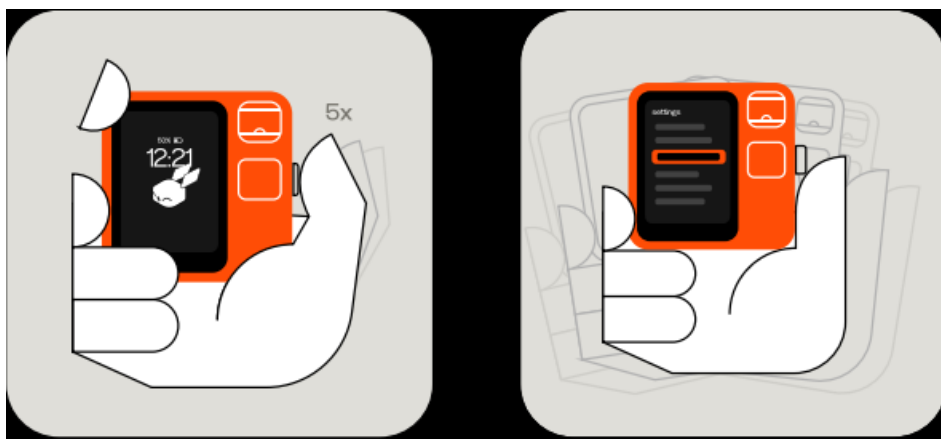
- using RL to navigate mews, scroll the wheel- to make a selection, click the button.
- Standby mode while on the home screen presses the button to enter standby mode. rl will enter standby after a period of inactivity. to wake the device from standby mixed, press the button



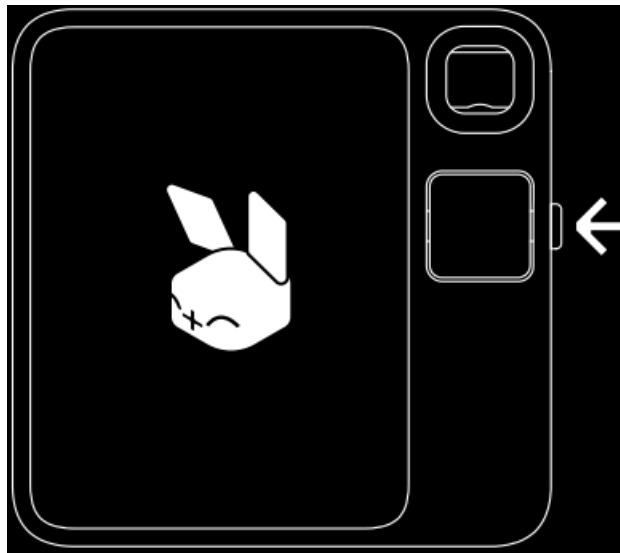
- charge to charge your device, connect it to any usb-c power
- troubleshoot if the device becomes unresponsive, and cZk the button g times in quick succession to shut down the &vice.



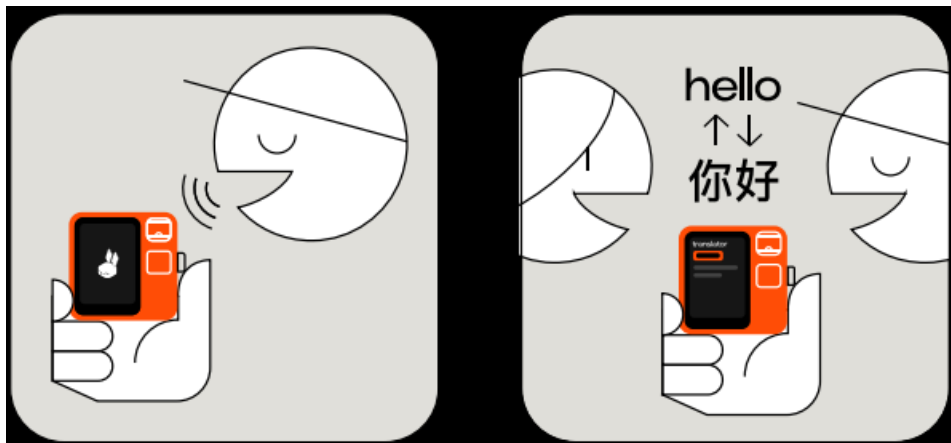
- Memory refreshes to perform a memory refreém click the button 5 times in quick succession.
- Access settings shake at any time to view settings.



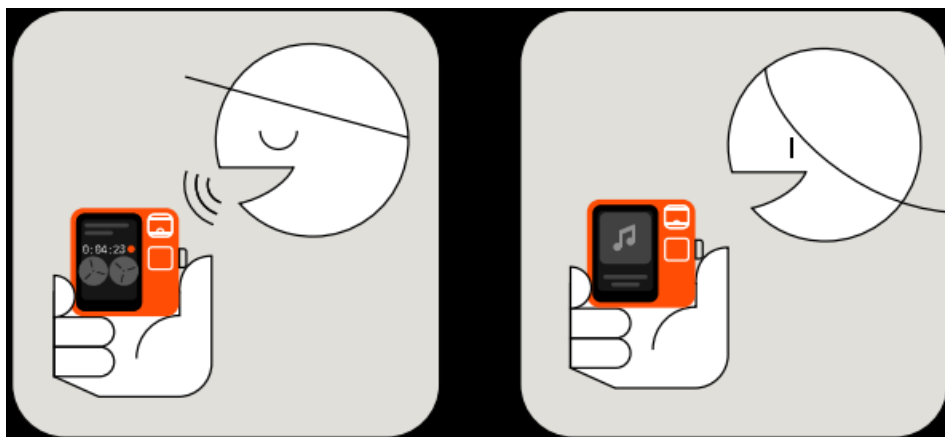
Ask for anything



- Using voice push and hold the button to speak to your r1. When you're done speaking, release the button.



- Search asks about anything! including stocks and weather. try asking "How's the the weather in Santa Monica?"
- bidirectional translation translates between two languages instantly. try asking Translatete from English to Spanish"

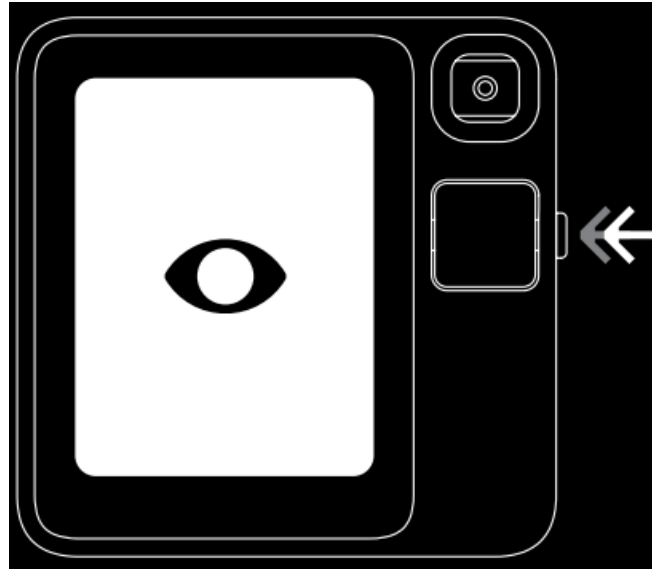


- voice recording records voice notes and listens to them in a rabbit hole. try asking "Start a voice recording for me"
- music asks for a song, artist, or album. Try asking "Play Computer Love by Kraftwerk"

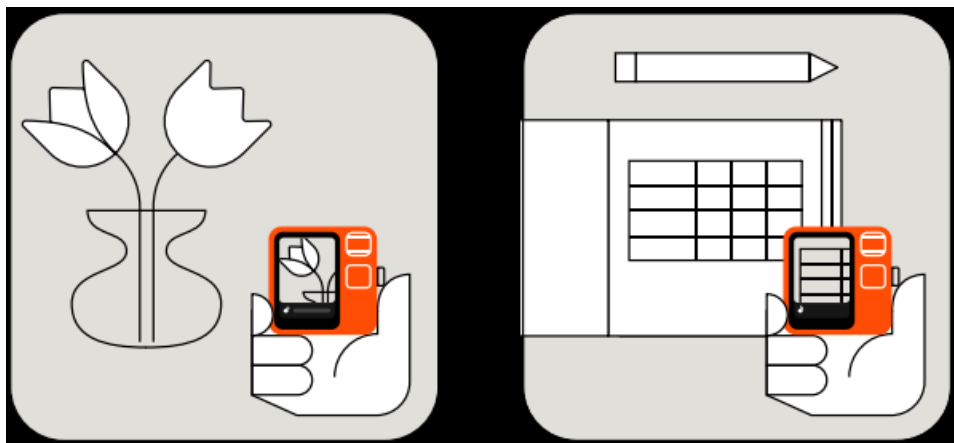
here are other ideas to try using voice:

- "generate an image of a cute rabbit"

- “How is the sap 500?”
- “what’s the nature of reality?”



- Using vision double-click the button to activate the eye, then, push and hold to ask about what you see. to flip the camera, turn the scroll wheelDoublele click again to exit the vision.

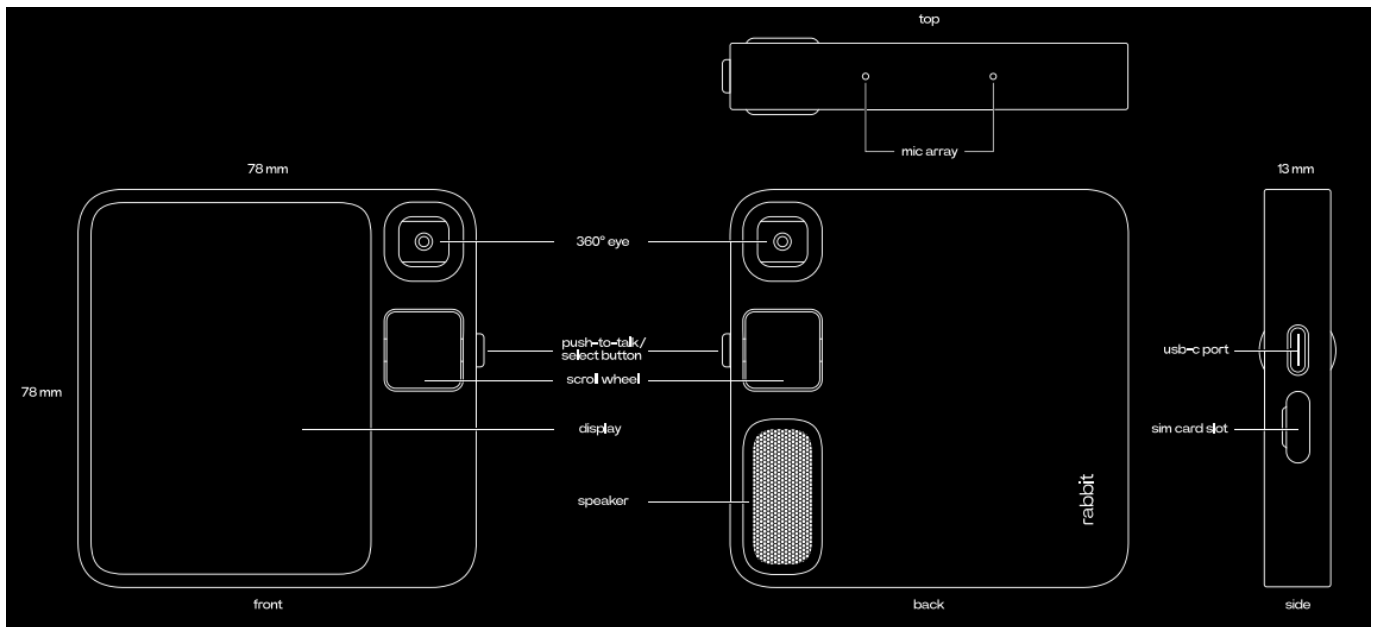


- Identify objects identify common objects using vision. Try asking “What kind of flower is this?” while in vision mode
- spreadsheet editing and transcription transcribe and edit tables or spreadsheets. Try asking “Can you transcribe this table and add 500 to the counter column?” while in vision mode

here are a few ideas to try using vision:

- edit documents: “add a summary to this document”
- generate recipes: “What can I cook with these ingredients?”
- transcribe text: “Take a look at this and transcribe it for me”
- vision translates: “What does this sign say?”

Hardware overview



Regulatory information

Warnings and care

- Keep the device away from direct sunlight and heat sources for extended periods.

FCC Warning

This device complies with part 15 of the FCC Rules. Operation is subject to the following two conditions:

1. This device may not cause harmful interference, and
2. this device must accept any interference received, including interference that may cause undesired operation.

Any Changes or modifications not expressly approved by the party responsible for compliance could void the user's authority to operate the equipment.

Note: This equipment has been tested and found to comply with the limits for a Class B digital device, under part 15 of the FCC Rules. These limits are designed to provide reasonable protection against harmful interference in a residential installation. This equipment generates and can radiate radio frequency energy and, if not installed and used by the instructions, may cause harmful interference to radio communications. However, there is no guarantee that interference will not occur in a particular installation. If this equipment does cause harmful interference to radio or television reception, which can be determined by turning the equipment off and on, the user is encouraged to try to correct the interference by one or more of the following measures:

- Reorient or relocate the receiving antenna.
- Increase the separation between the equipment and the receiver.
- Connect the equipment to an outlet on a circuit different from that to which the receiver is connected.
- Consult the dealer or an experienced radio/TV technician for help.

Specific Absorption Rate (SAR) Information

This A1 Companion meets the government's requirements for exposure to radio waves. The guidelines are based on standards that were developed by independent scientific organizations through periodic and thorough evaluation of scientific studies. The standards include a substantial safety margin designed to assure the safety of

all persons regardless of age or health.

FCC RF Exposure Information and Statement

The SAR limit of USA (FCC) is 1.6 W/kg averaging over one gram of tissue. Device types: A1 Companion (FCC D: 2BFB4R1) has also been tested against this SAR limit. The highest SAR value reported under this standard during product certification for worn on the body is 1316W/kg. This device was tested for typical body-worn operations with the back of the handset kept 5mm from the body. To maintain compliance with FCC RF exposure requirements, use accessories that maintain a 5mm separation distance between the user's body and the back of the handset. The use of belt clips, holsters, and similar accessories should not contain metallic components in their assembly. The use of accessories that do not satisfy these requirements may not comply with FCC RF exposure requirements and should be avoided.

Body-worn Operation

This device was tested for typical body-worn operations. To comply with RF exposure requirements, a minimum separation distance of 5mm must be maintained between the user's body and the handset, including the antenna. Third-party belt clips, holsters, and similar accessories used by this device should not contain any metallic components. Body-worn accessories that do not meet these requirements may not comply with RF exposure requirements and should be avoided. Use only the supplied or approved antenna.

CE Maintenance

- Be careful with headphones and earphones as excessive sound pressure may cause hearing loss.
- Risk of explosion if the battery is replaced by an incorrect type. Dispose of used batteries according to the instructions.
- The product shall only be connected to a USB interface of TYPE-C.
- The adapter shall be installed near the equipment and shall be easily accessible.
- EUT Operating temperature range: 00 C to 4000.
- Adapter: Please use a power adapter that is compatible and complies with a CE certificate. Product Power Input: DC 5V IA
- The device complies with RF specifications when the device is used at least 5mm of your body.
- To prevent possible hearing damage, do not listen at high volume for extended periods.

Restrictions of use

This product may be used in the following European member states subject to the following restrictions. For products that operate in the frequency band 5.150 to 5.250 GHz, wireless access systems (WAS), including radio local area networks (RLANs), shall be restricted to indoor use.

	AT	BE	BG	CH	CY	CZ	DE	DK	EE	EL	ES
	FI	FR	HR	HU	IE	IS	IT	LI	LT	LU	LV
	MT	NL	NO	PL	PT	RO	SE	SI	SK	TR	UK (NI)

Declaration of Conformity

Rabbit Inc. hereby declares that this A1 Companion complies with the essential requirements and other relevant provisions of Directive 2014/53/EU. By Article 10(2) and Article 10(10), This product is allowed to be used in all EU member states.

Important Recycling & WEEE information

Don't dispose of your product with your household waste. Refer to the User Guide that came with your product for further information.

European Union (EU) RoHS

This product, with included parts (cables, cords, and so on) meets the requirements of EU Directive 2011/65/EU as amended by Directive 2015/863/ EU on the restriction of the use of certain hazardous substances in electrical and electronic equipment ("PoHS recast" or "RoHS 2"). This radio equipment operates with the following frequency bands and maximum radio-frequency power:

Model name	Frequency bands	Maximum power
r1	WLAN 2400 - 2483.5 MHz	<16
	WLAN 5150 - 5250 MHz	<15.51
	WLAN 5250 - 5350 MHz	<14.5
	WLAN 5725 - 5850 MHz	<12.5
	Bluetooth 2400 - 2483.5 MHz	<10

Specific Absorption Rate information

- THE DEVICE MEETS INTERNATIONAL GUIDELINES FOR EXPOSURE TO RADIO WAVES.

The device is a radio transmitter and receiver. It is designed not to exceed the limits for exposure to radio waves (radio frequency electromagnetic fields) recommended by international guidelines. The guidelines were developed by an independent scientific organization (ICNIRP) and include a substantial safety margin designed to assure the safety of all persons, regardless of age and health. The radio wave exposure guidelines use a unit of measurement known as the Specific Absorption Rate or SAR. Tests for SAR are conducted using standard operating positions with the device transmitting at its highest certified power level in all tested frequency bands. The highest SAR values under the ICNIRP guidelines for your device model are listed below:

Maximum SAR for this model and conditions under which it was recorded.				
EU 10g SAR Limit (2.0 W/kg)	r1	Body-worn (0mm)	LTE, WLAN, Bluetooth	1.043 W/kg
EU 10g SAR Limit (4.0 W/kg)		Limb (0mm)	LTE, WLAN, Bluetooth	2.550W/kg

- Model/Brand Name: r1/rabbit
- Manufacturer: 1710-171612th Street, Santa Monica, CA 90404 U.S.A.

IC Warning

- This device complies with Industry Canada license-exempt RSS standard(s).

Operation is subject to the following two conditions:

1. This device may not cause interference
2. This device must accept any interference, including interference that may cause undesired operation of the device.

RF Exposure Information and Statement

The SAR limit of Canada is 1.6 W/kg averaging over one gram of tissue. Device types: Mobile phone (IC:32154-R1) has also been tested against this SAR limit. The highest SAR value reported under this standard during product certification for use at the ear is worn on the body is 1.316W/kg. This device was tested for typical body-worn operations with the back of the handset kept 5mm from the body. To maintain compliance with IC RF exposure requirements, use accessories that maintain a 5 mm separation distance between the user's body and the back of the handset. The use of belt clips, holsters, and similar accessories should not contain metallic components in their assembly. The use of accessories that do not satisfy these requirements may not comply with IC RF exposure requirements and should be avoided.

Body-worn Operation

This device was tested for typical body-worn operations. To comply with RF exposure requirements, a minimum separation distance of 5mm must be maintained between the user's body and the handset, including the antenna. Third-party belt clips, holsters, and similar accessories used by this device should not contain any metallic components. Body-worn accessories that do not meet these requirements may not comply with RF exposure requirements and should be avoided. Use only the supplied or an approved antenna.

RF warning for Portable device

The device has been evaluated to meet general RF exposure requirements. The device can be used in portable exposure conditions without restriction.

Authorized Representative Information

- Company name: GLOBAL STAR UK SOLUTION LTD
- Add: 7 COPPERFIELD ROAD COVENTRY, WEST MIDLANDS, ENGLAND UNITED KINGDOM CV24AQ
- Contact (Name, email, tel): James Lin, GStarUK.service@hotmail.com, Tel: +34-615 561159

EU

- Company name: GLOBAL ONE SOLUTION LTD
- Add: 6 rue d'Armaillé 75017 Paris
- Contact (Name, email, tel): Jeffrey Lin, GOS.business@hotmail.com
- Tel: +34-615 561159

WARNING

- This product can expose you to lead, a chemical known to the state of California to cause cancer. For more

information go to www.P65warnings.ca.gov/product

Download PD: [RABBIT R1 Android-Powered Device User Manual](#)

References

- [User Manual](#)

[Manuals+](#), [Privacy Policy](#)

This website is an independent publication and is neither affiliated with nor endorsed by any of the trademark owners. The "Bluetooth®" word mark and logos are registered trademarks owned by Bluetooth SIG, Inc. The "Wi-Fi®" word mark and logos are registered trademarks owned by the Wi-Fi Alliance. Any use of these marks on this website does not imply any affiliation with or endorsement.