


RAB

RAB
Lighting
RDLED2S
8-30N-TS
LED
Downlight
Fixture



RAB Lighting RDLED2S8-30N-TS LED Downlight Fixture Owner's Manual

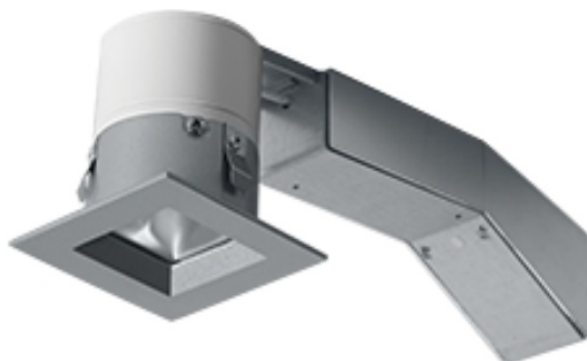
[Home](#) » [RAB Lighting](#) » RAB Lighting RDLED2S8-30N-TS LED Downlight Fixture Owner's Manual 

Contents

- [1 RAB Lighting RDLED2S8-30N-TS LED Downlight Fixture](#)
- [2 Specifications](#)
- [3 Product Usage Instructions](#)
- [4 Technical Specifications](#)
- [5 Dimensions](#)
- [6 Ordering Matrix](#)
- [7 Documents / Resources](#)
 - [7.1 References](#)
- [8 Related Posts](#)

RAB

RAB Lighting RDLED2S8-30N-TS LED Downlight Fixture



Specifications

- Product Name: RDLED2S8-30N-TS
- Color: Silver trim
- Weight: 2.9 lbs
- **Driver Info**
 - Type Constant Current
 - 120V 0.08A
 - 208V N/A
 - 240V N/A
 - 277V N/A
- Input Watts: 8.3W
- LED Watts: 8W
- Color Temperature: 4000K (Neutral)
- Color Accuracy: 83 CRI
- L70 Lifespan: 50,000 Hours
- Lumens: 742 lm
- Efficacy: 89.4 lm/W

Product Usage Instructions

Installation

1. Ensure the power source is turned off before installation.
2. Install the trim component into the New Construction housing for a complete fixture setup.
3. Use torsion springs to easily install the fixture into the ceiling collar for remodeler setups or rough-in for new constructions.

Dimming

1. This product is compatible with TRIAC and ELV dimmers at 120V only.
2. Refer to the dimmer compatibility guide for specific dimmer recommendations.

Maintenance

1. Regularly clean the fixture using a soft cloth to maintain optimal light output.
2. Inspect for any signs of damage or wear and tear periodically.

FAQ

• Q: Is the product suitable for wet locations?

A: Yes, the product is suitable for wet locations as long as it is installed in a covered ceiling.

• Q: What is the warranty period for this product?

A: The product is covered by a five (5) year warranty from the date of delivery to the end user, covering defects in materials and workmanship, light output, color stability, driver performance, and fixture finish.

• Q: Can the product be dimmed?

A: Yes, the product is dimmable with TRIAC and ELV dimmers at 120V only. Refer to the dimmer compatibility

guide for more details.

- Project:
- Type:
- Prepared By:
- Date:

Technical Specifications

Compliance

UL Listed:

Suitable for wet locations in a covered ceiling

IESNA LM-79 & LM-80 Testing:

RAB LED luminaires and LED components have been tested by an independent laboratory in accordance with IESNA LM-79 and LM-80.

Construction

IC Rated:

Suitable for direct contact with insulation

Trim Component:

This component can be ordered with New Construction housing in order to make a complete fixture. See [here](#) for New Construction Housing

Maximum Ambient Temperature:

Suitable for use in up to 40°C (104°F)

Cold Weather Starting:

The minimum starting temperature is -40°C (-40°F)

Lens:

Nanostructure lens eliminates “hot spots”, and helps provide smooth, uniform light and higher efficiency

Junction Box:

Integral junction box with wiring capacity for Min 60°C supply conductors
End of Run

Housing:

Specification-grade, die-cast aluminum construction

Installation:

Torsion springs easily install into ceiling collar (remodeler) or rough-in (new construction)

Trim Ring:

Silver powder coated die cast 1/2" trim ring

Green Technology:

Mercury and UV free. RoHS-compliant components.

Finish:

Our environmentally friendly polyester powder coatings are formulated for high-durability and long-lasting color

Performance**Lifespan:**

50,000-Hour LED lifespan based on IES LM-80 results and TM-21 calculations

Wattage Equivalency:

Equivalent to 50W MR16

LED Characteristics**LED:**

High-output, long-life LED with 2-step binning and integrated driver technology

Color Consistency:

2-step MacAdam Ellipse binning to achieve consistent fixture-to-fixture color

Color Stability:

LED color temperature is warrantied to shift no more than 200K in color temperature over a 5-year period

Electrical**Driver:**

Constant Current, Class 2, 120VAC Only, 50/60Hz, 200mA, 0.07A

Dimming Driver:

TRIAC and ELV (at 120V only).

See dimmer compatibility guide [here](#).

Optical**Optics:**

30° beam spread with specular thermoplastic optics

Spacing Criteria:

- 0 to 180° (along): 0.50
- 90 to 270° (across): 0.52
- diagonal: 0.52

Other**Warranty:**

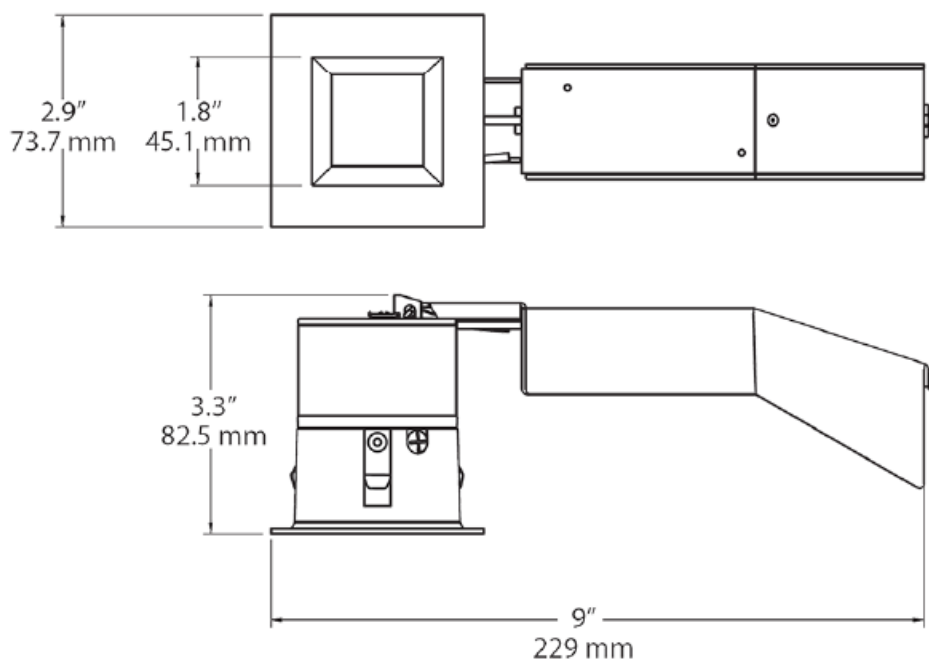
RAB warrants that our LED products will be free from defects in materials and workmanship for a period of five (5) years from the date of delivery to the end user, including coverage of light output, color stability, driver performance and fixture finish. RAB's warranty is subject to all terms and conditions found at

rablighting.com/warranty.

Buy American Act Compliance:

RAB values USA manufacturing! Upon request, RAB may be able to manufacture this product to be compliant with the Buy American Act (BAA). Please contact customer service to request a quote for the product to be made BAA compliant.

Dimensions



Features

8W replaces 50W MR16 with energy savings of 82% TRIAC dimmer compatibility for additional light control
Precision-engineered optics deliver smooth light without hot spots or glare

Ordering Matrix

Family	Size	Shape	Wattage
RDLED	2	S	8

2 = 2"

R = Round
S = Square

8 = 8W

Beam Spread

30

- 20 = 20 degrees
- 30 = 30 degrees
- 40 = 40 degrees
- W = Wall Washer

Color Temp

N

- Y = 3000K Warm
- N = 4000K Neutral
- YN = 3500K Warm Neutral
- YY = 2700K Residential Warm

CRI

Trim

T

- Blank = 82 or 83 CRI
- HC = 90 CRI
- T = 1/2" Trim
- TL = Trimless Look

Trim Ring Color

S

- S = Matte Silver
- W = White
- B = Black Trim


Need help? Tech help line: [888-722-1000](tel:888-722-1000)

- Email: sales@rablighting.com
- Website: www.rablighting.com

Copyright © 2024 RAB Lighting All Rights Reserved

Note: Specifications are subject to change at any time without notice

Documents / Resources



[RAB Lighting RDLED2S8-30N-TS LED Downlight Fixture](#) [pdf] Owner's Manual
RDLED2S8-30N-TS LED Downlight Fixture, RDLED2S8-30N-TS, LED Downlight Fixture,
Downlight Fixture, Fixture

References

- [R Legal - RAB Lighting](#)
- [R Welcome to RAB](#)
- [R rablighting.com/images/2inch_dimmer_compatibility.png](#)
- [R Legal - RAB Lighting](#)
- [User Manual](#)

[Manuals+](#), [Privacy Policy](#)

This website is an independent publication and is neither affiliated with nor endorsed by any of the trademark owners. The "Bluetooth®" word mark and logos are registered trademarks owned by Bluetooth SIG, Inc. The "Wi-Fi®" word mark and logos are registered trademarks owned by the Wi-Fi Alliance. Any use of these marks on this website does not imply any affiliation with or endorsement.