



## R V R TLK300 Telemetry System Broadcast Systems User Manual

[Home](#) » [R V R](#) » R V R TLK300 Telemetry System Broadcast Systems User Manual 



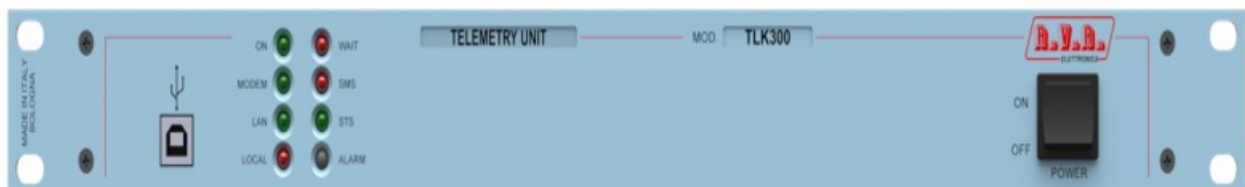
### TELEMETRY SYSTEM TLK – /TLW-E

The possibility of remotely monitoring and controlling the station allows to optimize operation by preventing malfunctions and reducing intervention times in the event of a breakdown. RVR has a full set of remote control systems.

#### MODELS

TLK300 TLK302T

TLK301 /TLW-E



There are IP telemetry modules that can be integrated into the compact transmitters of the TEXTLCD and TEXTFT series, SNMP telemetry for individual transmitting devices or systems, SNMP2 telemetry systems for complex and redundant configurations, all compatible with any device such as smartphone, Desktop PC, Laptop. Versions available for serial port, GSM, WEB, easy to configure and fully compatible with any operating system.

- TLK300: SNMP external unit for single devices and systems.
- TLK301: SNMPv2, SNMPT Auth mail and slave SCMLCD4+1 systems.

- TLK302T: SNMP2 external unit for single devices and systems.
- TLW-E: module that can be integrated into BLUES-NV, TEX-LCD and TEX-TFT devices.

## Contents

### [1 ORDERING INFORMATION](#)

### [2 Documents / Resources](#)

#### [2.1 References](#)

## ORDERING INFORMATION

Model	Description
TLK300	The telemetry systems allow for an immediate intervention in case of fault, thanks to the radio station remote control.
VERSION	
TLK300/V9	Telemetry unit SERIAL only for TX 1+1 Compact Transmitter Series with SCML1+1SL.
TLK300N10	Telemetry unit GSM only for TX 1+1 Compact Transmitter Series with SCML1+1SL.
TLK300N11	Telemetry unit WEB only for TX 1+1 Compact Transmitter Series with SCML1+1SL.
TLK300N12	Telemetry unit WEB + GSM only for TX 1+1 Compact Transmitter Series with SCHL1+1SL.

Model	Description
TLK300	The telemetry systems allow for an immediate intervention in case of fault, thanks to the radio station remote control.
VERSION	
TLK300/V9	Telemetry unit SERIAL only for TX 1+1 Compact Transmitter Series with SCML1+1SL.
TLK300N10	Telemetry unit GSM only for TX 1+1 Compact Transmitter Series with SCML1+1SL.
TLK300N11	Telemetry unit WEB only for TX 1+1 Compact Transmitter Series with SCML1+1SL.
TLK300N12	Telemetry unit WEB + GSM only for TX 1+1 Compact Transmitter Series with SCHL1+1SL.
TLK301	The telemetry systems allow for an immediate intervention in case of fault, thanks to the radio station remote control.
VERSION	
TLK301/V1	Telemetry unit serial for TX modular line.
TLK301/V2	Telemetry unit GSM for TX modular line.
TLK301/V3	Telemetry unit LAN for TX modular line.
TLK301/V4	Telemetry unit LAN+GSM for TX modular line.
TLK301/V5	Telemetry unit serial for TX PLUG-IN-CA.
TLK301/V6	Telemetry unit GSM for TX PLUG-IN-CA.
TLK301/V7	Telemetry unit LAN for TX PLUG-IN-CA.
TLK301/V8	Telemetry unit LAN+GSM for PLUG-IN-CA.
TLK302T	TLK302T is an evolution of the TLK300 Telemetry Serie that includes additional functions for telemetry.
TLK302T-02	Double Telemetry unit WEB.
TLK302T-M	Telemetry unit WEB + FM Radio Receiver and Modulation Analyzer.

Module that can be integrated into BLUES-NV ,TEX-LCD and TEX-TFT devices.

Model	Description
/TLW-BLU-E	BLUES30NV BLUES50NV
/TLW-TEX-E	TEX30LCD/S TEX50LCD/S TEX100LCD/S TEX150LCD/S TEX300LCD TEX502LCD TEX702LCD TEX3500LCD
/TLW-TFT-E	TEX32TFT TEX52TFT TEX302LCD/S TEX502TFT TEX702TFT TEX1002TFT TEX1003TFT TEX1703TFT TEX2003TFT TEX2503TFT TEX5004TFT

## TLK300

Telemetry System.



<https://www.rvr.it/it/products/components/telemetry-units-system/tlk300-series/tlk300-tlk2000-nsn2ss9y/>



Menu selection

User:  
Info  
Measure  
Alarm List

Operator:  
General  
Command  
Alarm Delete

Administrators:  
General  
Command  
Alarm Delete  
Password  
Network  
Mail

Auto Refresh: Ready!

Config.	12	TX1 R.F. Mute	Absent
Status	Remote		
Tx1 OnAIR	Absent	TX2 Fwd Power	0 W
Tx1 Good	Absent	TX2 Rfl Power	0 W
Tx2 OnAIR	Present	TX2 Freq.	0 MHz
Tx2 Good	Absent	TX2 Mod.	0 KHz
SCM Status	Manual	TX2 Vpa	0 V
		TX2 Ipa	0 A
TX1 Fwd Power	0 W	TX2 Mod. L	0 KHz
TX1 Rfl Power	0 W	TX2 Mod. R	0 KHz
TX1 Freq.	0 MHz	TX2 PLL Lock	Absent
TX1 Mod.	0 KHz	TX2 Audio Alarm	Absent
TX1 Vpa	0 V	TX2 Foldback	Absent
TX1 Ipa	0 A	TX2 R.F. Mute	Absent
TX1 Mod. L	0 KHz		
TX1 Mod. R	0 KHz	SCM Tot Retry	10
TX1 PLL Lock	Absent	SCM Retry	0
TX1 Audio Alarm	Absent	SCM Switch	Absent
TX1 Foldback	Absent	SCM Fault	Absent

CMD RESET

CMD Auto/Man

CMD Exchange

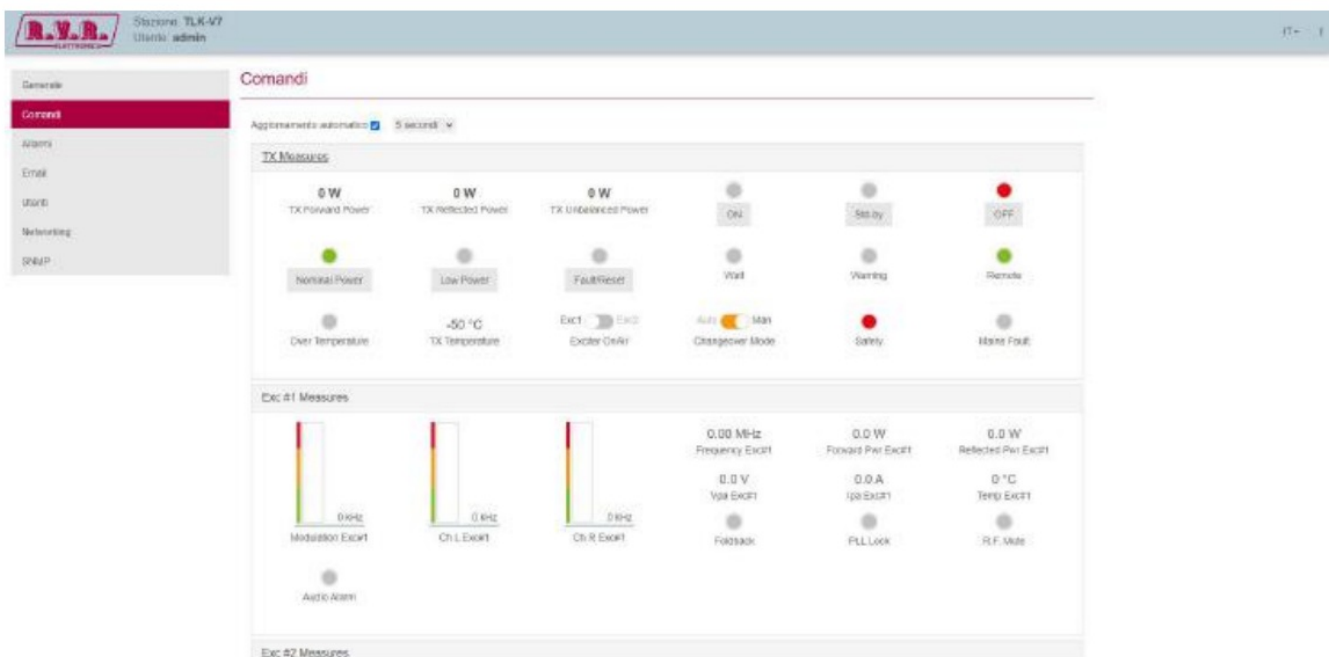
CMD TX1 On/Off

CMD TX2 On/Off

TLK301  
Telemetry System.



<https://www.rvr.it/en/products/components/telemetry-units-system/tlk300-series/cszbuqgwr11jcbda/>



**TLK302T**  
Telemetry System.



<https://www.rvr.it/it/products/components/telemetry-units-system/tlk300-series/tlk302t/>



**TLK302 - Telemetry Controller - Rimini**

[Home](#) [Settings](#)

Session: 02:58 [Logout](#)

Status: Run Alias: PLUG-IN CCBN 2018 Model: TX 6 KPS-CA

Forward Power	Reflected Power	Unbal. Power	Main Exc Pwr	Out Air Temp
<b>1.08</b>	<b>0</b>	<b>0</b>	<b>24</b>	<b>20.0</b>
kW	W	W	W	°C

Status: Run Alias: EXCITER 1 Model: PFX30LCD

Forward Power	Reflected Power	Frequency	Modulation	Temperature
<b>0.0</b>	<b>0.0</b>	<b>98.40</b>	<b>7.3</b>	<b>18.6</b>
W	W	MHz	kHz	°C

Status: Run Alias: EXCITER 2 Model: PFX30LCD

Forward Power	Reflected Power	Modulation
<b>25.0</b>	<b>0.0</b>	<b>0.0</b>
W	W	kHz

/TLW-E  
Telemetry System.



<https://www.rvr.it/it/products/components/telemetry-units-system/tlw/tlw/>



ONLINE



- ☒ R.F. POWER OFF
- ☐ PLL LOCK
- ☒ FOLDBACK
- ☒ EXT R.F. MUTE
- ☒ FSK DISABLED
- ☒ ALARM AUDIO



### R.F. EFFICIENCY



TEMPERATURE



### DEVIATION



65 KHZ

◀ LEFT



0 %

➡ RIGHT



0%



 OPERATOR

## SETTINGS



## TLK300

Parameters			Value	Notes
<b>GENERALS</b>				
Ambient working temperature			-10 °C to + 50 °C / 95%	Relative humidity non condensing
<b>POWER REQUIREMENTS</b>				
AC Power input	AC Supply Voltage	VAC	80 - 260	Full Range Monophase
	AC Apparent Power Consumption	W	25	
	Connector		VDE IEC Standard	
DC Power Input	DC Supply Voltage	VDC	12	
	DC Current		< 3 a	
<b>MECHANICAL DIMENSIONS</b>				
Phisical dimensions	L x H x W	mm / inch	483 / 19	EIA rack
		mm / inch	88 / 3 1/2	1HE
Weight		kg	About 4,3	
Cooling			Convection cooling	
Acoustic noise		dBA	0	
<b>INTERFACES</b>				
<b>Signalling LEDs</b>				
Display	40X2 Alphanumerical		No	
Push buttons	4 (UP, DOWN, ENTER, ESC)		No	
USB	TELECON Protocol		Yes	
RS232	TELECON Protocol		Yes	
RS485	PLUG-IN Protocol		Yes	(Only on TX PLUG-IN CA versions)
I2C			Yes	
	LAN		Yes	(Only on WEB versions)
	10/100 base-T Ethernet LAN		Yes	
RJ45	HTTP and AJAX		Status and configuration can be accessible from any internet browser on a PC or smartphone Alarm notification events sends via emails (up to 4 independent address can be defined)	
	SMTP			
SIM slot & ANTENNA			Yes	(Only on GSM versions)
<b>FUSES</b>				
On mains			1 External fuse F 1 A F - 5X20 mm	
On services			X	
On PA Supply			X	
On driver supply			X	

## TLK301

Parameters			Value	Notes
<b>GENERALS</b>				
Ambient working temperature		°C	-10 to +5	Whithout condensing
<b>POWER REQUIREMENTS</b>				
AC Power input	AC Supply Voltage	VAC	80 ÷ 260 *	Full Range ** Internal switch *
	AC Apparent Power Consumption	W	25	
	Connector		VDE IEC Standard	
DC Power Input	DC Supply Voltage	VDC	12	
	DC Current		< 3	
<b>FUSES</b>				
On mains			1 External fuse F 1 A F ÷ 5X20 mm	
<b>MECHANICAL DIMENSIONS</b>				
Phisical dimensions	Front panel width	mm / inch	483	EIA rack
	Front panel height	mm / inch	44	1HE
	Overall depth	mm / inch	263	
	Chassis depth	mm / inch	239	
Weight		kg	About 4,3	
<b>INTERFACES</b>				
<b>Signalling LEDs</b>				
Display	40X2 Alphanumerical		No	
Push buttons	4 (UP, DOWN, ENTER, ESC)		No	
USB	TELECON Protocol		Yes	
RS232	TELECON Protocol		Yes	
RS485	PLUG-IN Protocol		Yes	(Only on TX PLUG-IN CA versions)
I2C			Yes	
RJ45	LAN		Yes	(Only on WEB versions)
SIM slot & ANTENNA			Yes	(Only on GSM versions)
<b>VARIOUS</b>				
Cooling			Convection cooling	
Acoustic noise		dBA	0	



**TLK302T**

Parameters		Value		Notes
GENERALS				
Ambient working temperature			-10 °C to + 50 °C / 95%	Relative humidity non condensing
POWER REQUIREMENTS				
AC Power input	AC Supply Voltage	VAC	100 - 240	Full Range Monophase
	AC Apparent Power Consumption	W	15	
	Connector		VDE IEC Standard	
MECHANICAL DIMENSIONS				
Physical dimensions	L x H x W	mm / inch	483	EIA rack
		mm / inch	88 / 3 1/2	1HE
Weight		kg	About 1	
Cooling			Convection cooling	
Acoustic noise		dBA	0	
INTERFACES				
Signalling LEDS			Yes	
RS232			Yes	(only exciter PTX)
RS485 PLUG-IN protocol			Yes	(only TX PLUG IN-CA version)
I'C	For sampling the RVR station single and dual exciter		Yes	
			Yes	
			Yes	
			Yes	
			Yes	
RJ45	10/100 base-T Ethernet LAN			
	HTTP		Status and configuration can be accessible from any internet browser on a PC or smartphone.	
	SNMPV 2.0		Status and configuration can be accessible from MIB browser and TRAP alarm receiver.	
	SMTP		Alarm notification events sends via emails (up to 2 independent address can be defined).	
	SMTP		Built-in dock synchronization over networks.	
FUSES				
On mains			1 External fuse F 3,15 A T - 5X20 mm	
On services			X	
On PA Supply			X	
On driver supply			X	

**/TLW-E**

Parameters		Value	Notes
GENERALS			
Ambient working temperature		-10 °C to + 50 °C / 95%	Relative humidity non condensing
FEATURES			
I2C Slave for connection to external telemetry		X	
Connection with WEB Browser (IE, Firefox, Opera, ..)		X	
WEB protection with 2 Password Levels		X	
SNMP connection (GET,SET)		X	
TRAP notification with Station name		X	
TRAP notification with Counter		X	

All pictures are RVR's property and they are only indicative and not binding. The pictures can be modified without notice. These are general specifications. They show typical values and are subject to change without notice.



R.V.R. Elettronica S.r.l.  
Via del Fonditore, 2/2c  
40138 Bologna Italy  
Phone +39 0516010506  
Fax +39 0516011104

[sales@rvr.it](mailto:sales@rvr.it)

[www.rvr.it](http://www.rvr.it)



ISO 9001



<https://www.rvr.it>

**R.V.R. Elettronica S.r.l.**

Via del Fonditore 2/2


40138 Bologna – Italy

Phone +39 0516010506

[sales@rvr.it](mailto:sales@rvr.it)

[www.rvr.it](http://www.rvr.it)

## Documents / Resources

	<p><a href="#">R V R TLK300 Telemetry System Broadcast Systems</a> [pdf] User Manual</p> <p>TLK300 Telemetry System Broadcast Systems, TLK300, Telemetry System Broadcast Systems , System Broadcast Systems, Broadcast Systems</p>
---	---

## References

-  [R.V.R. Elettronica - Broadcast Systems](#)