



# R V R ELETTRONICA PJ1000M-C FM Transmitter Broadcast Systems User Manual

[Home](#) » [R V R ELETTRONICA](#) » R V R ELETTRONICA PJ1000M-C FM Transmitter Broadcast Systems User Manual 

## Contents

- [1 R V R ELETTRONICA PJ1000M-C FM Transmitter Broadcast Systems](#)
- [2 Remote Fan Controller](#)
- [3 EMI FilterInterface Board](#)
- [4 Logic BoardLED BoardMains FilterRF BLOCK](#)
- [5 Rear Interface](#)
- [6 POWER SUPPLY](#)
- [7 Documents / Resources](#)
- [8 Related Posts](#)

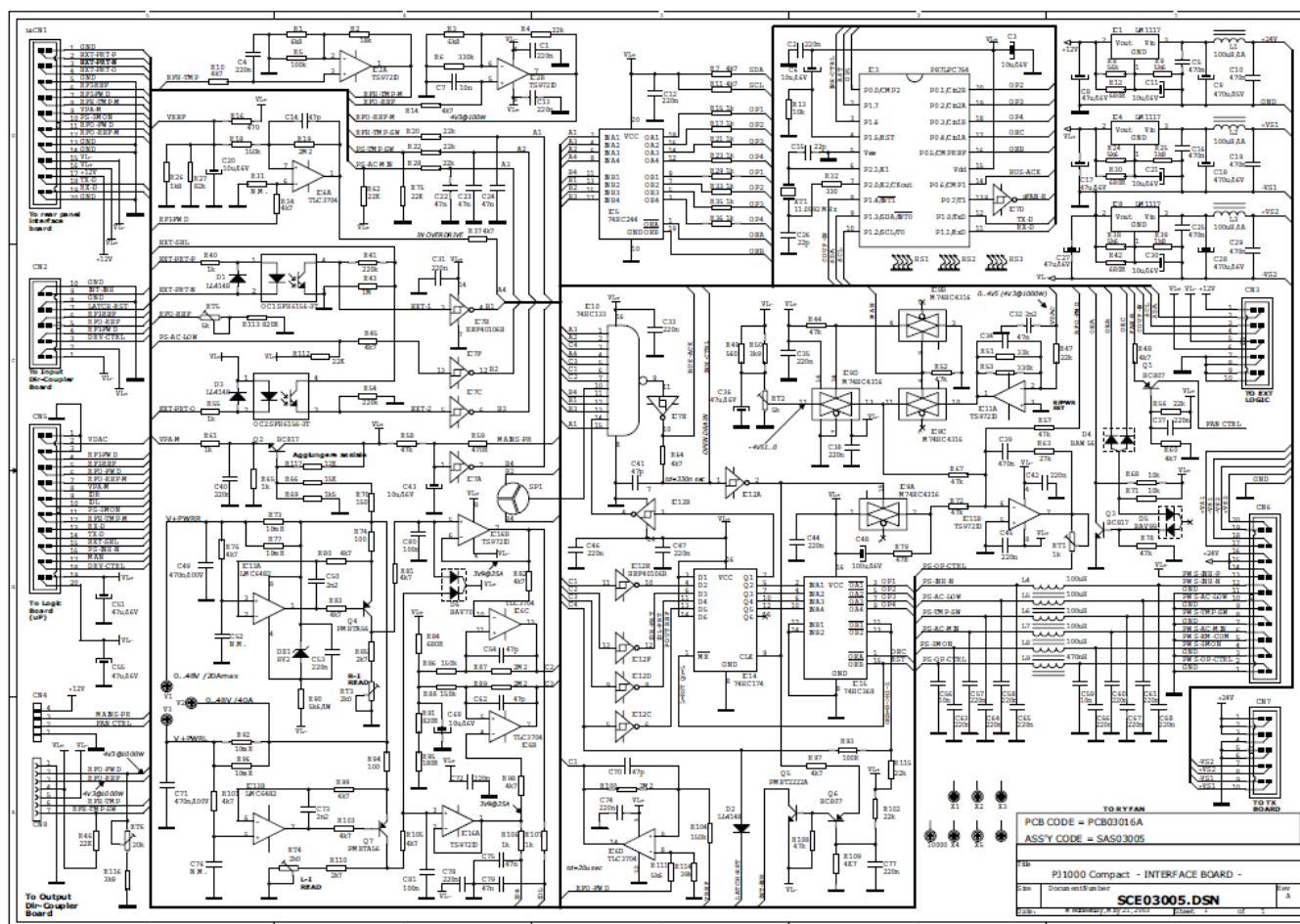
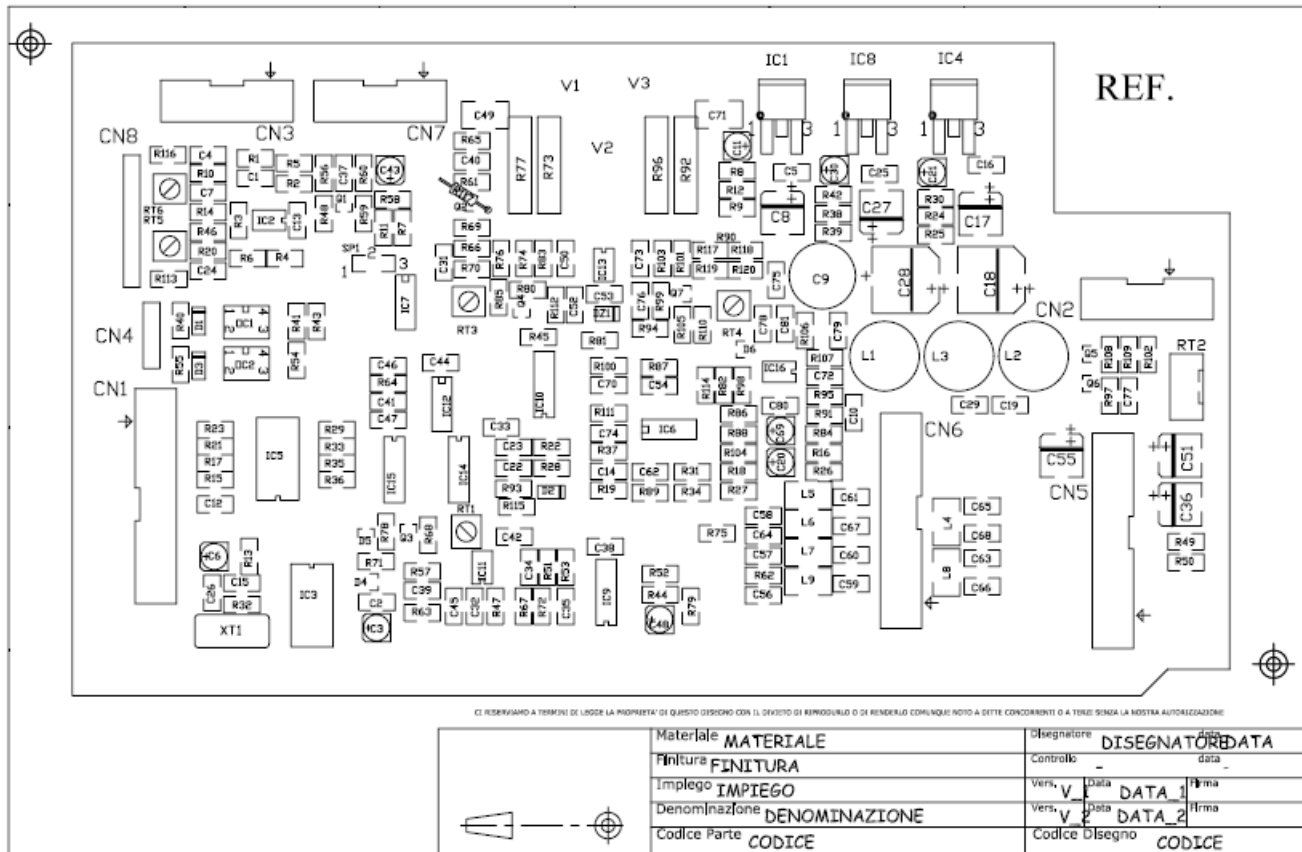


**R V R ELETTRONICA PJ1000M-C FM Transmitter Broadcast Systems**

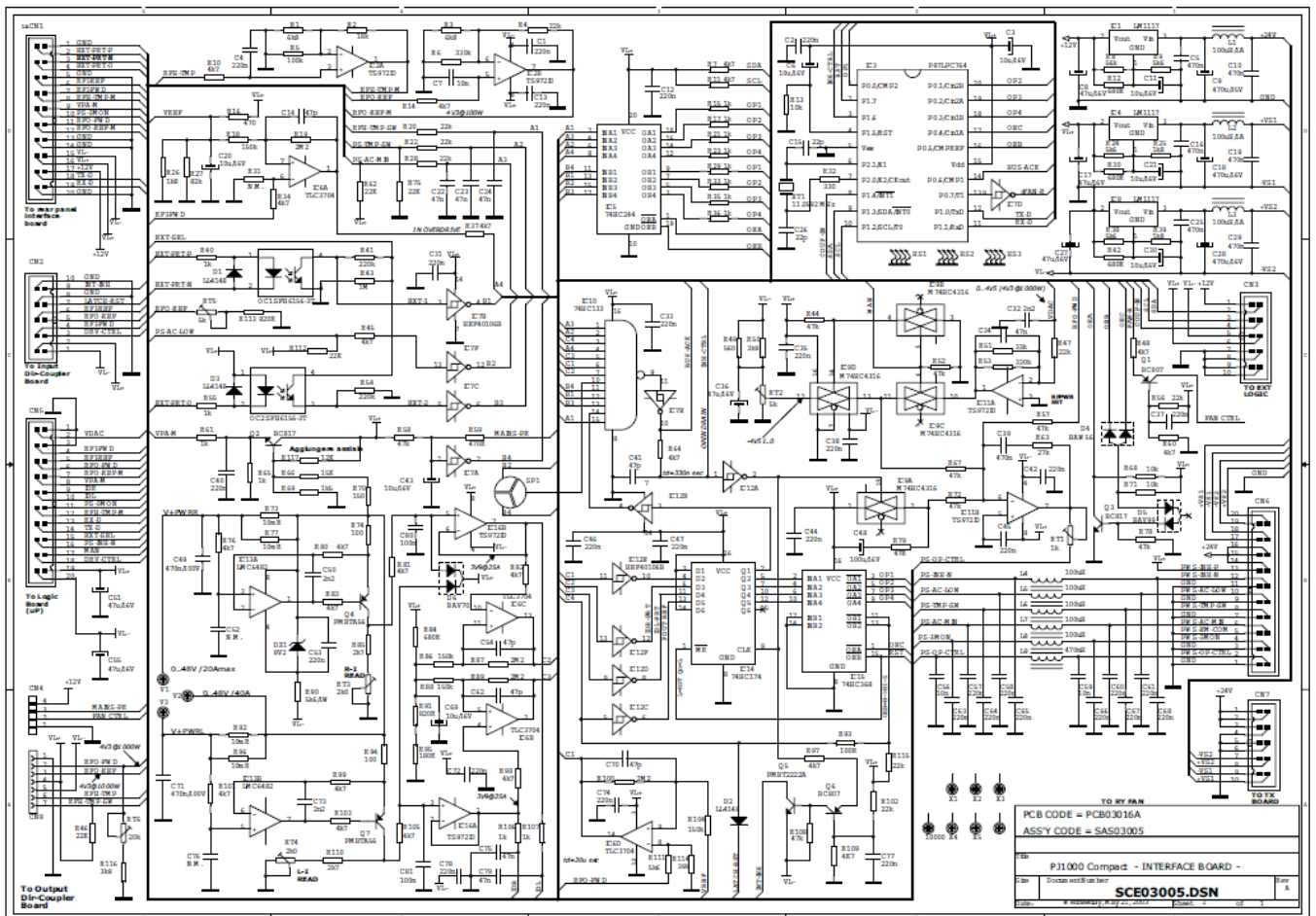
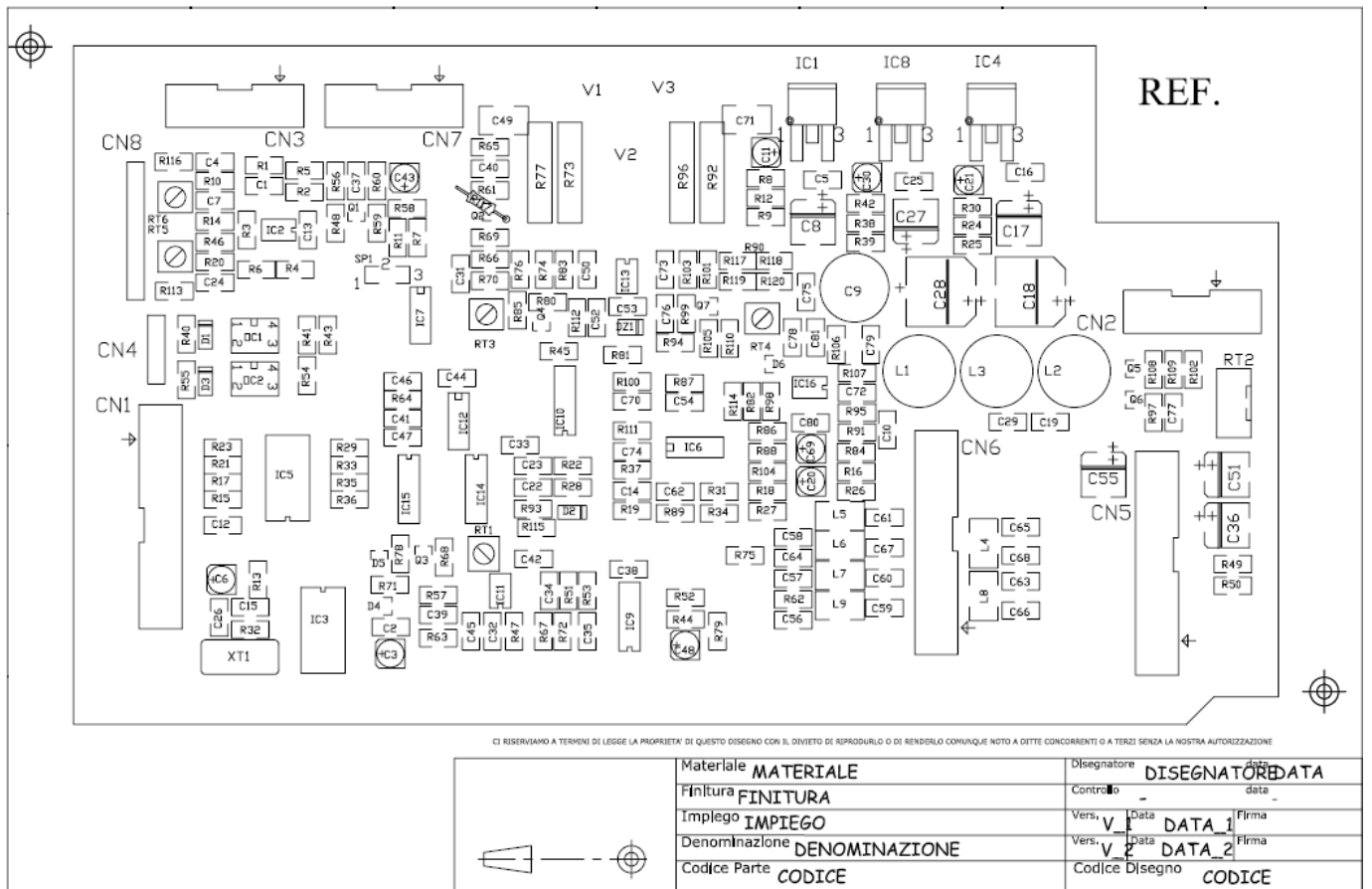


**Remote Fan Controller**

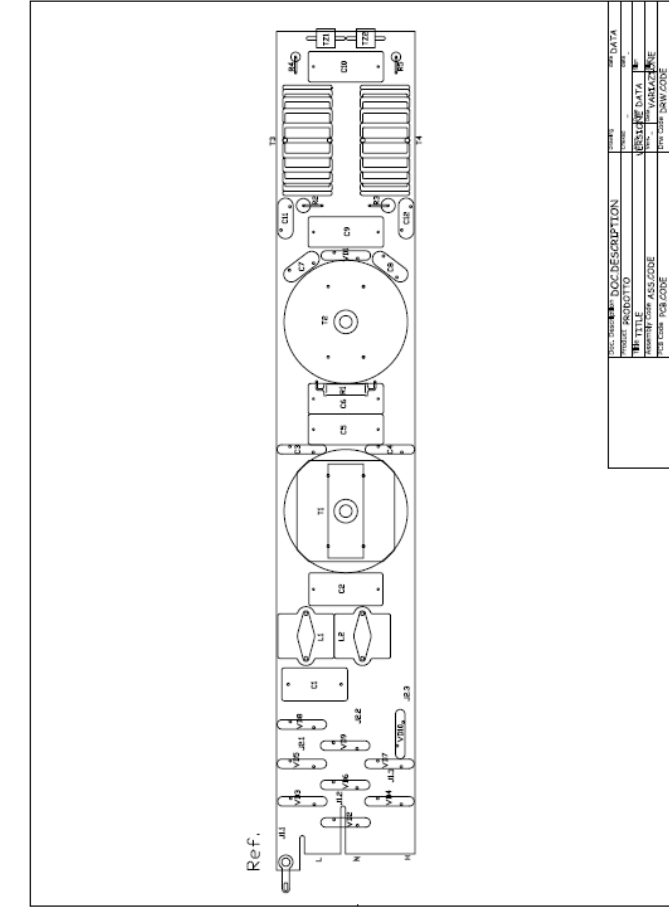




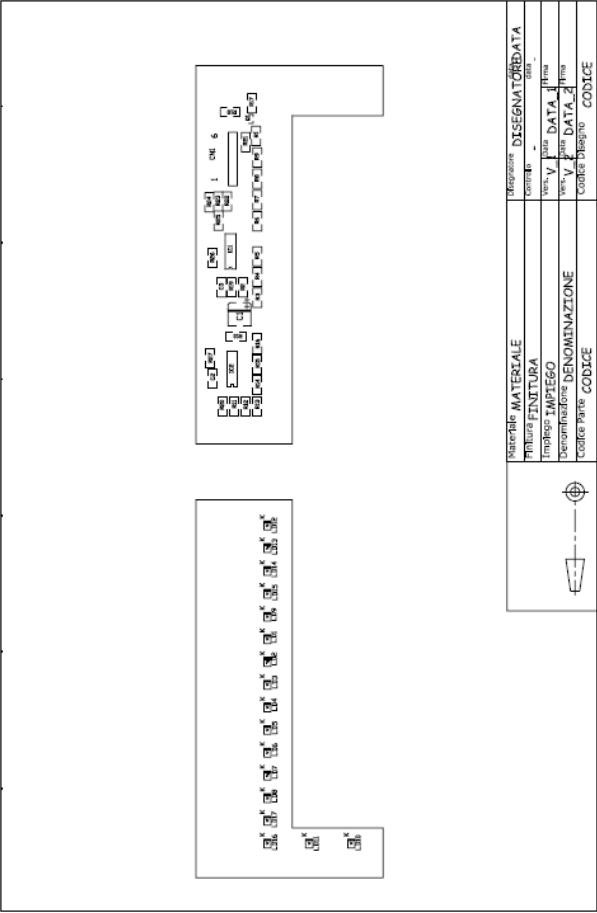
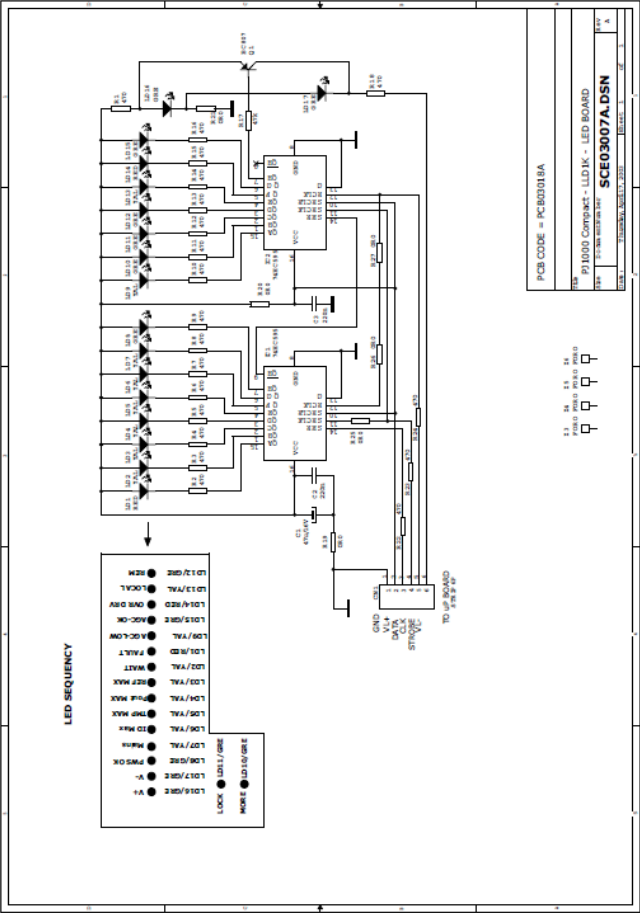
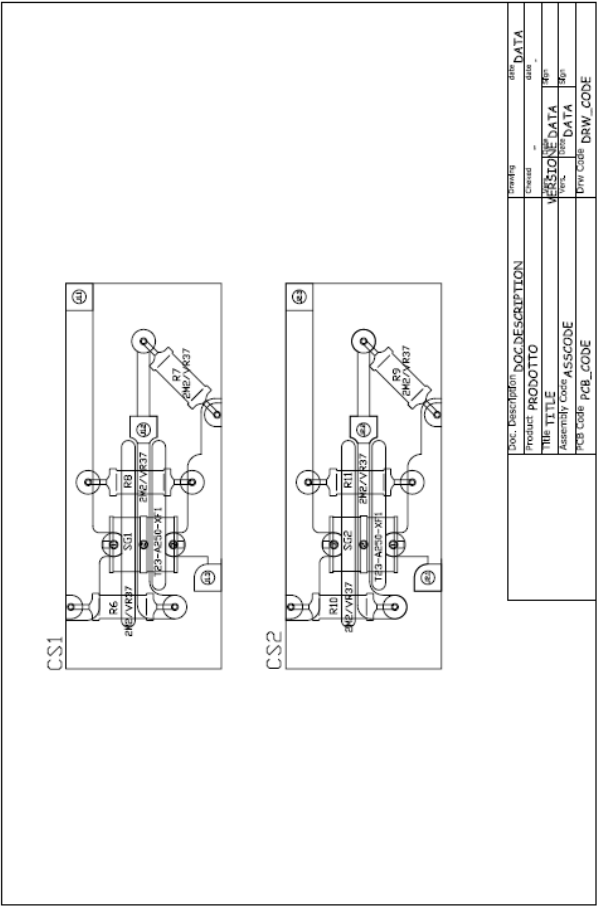
Logic Board

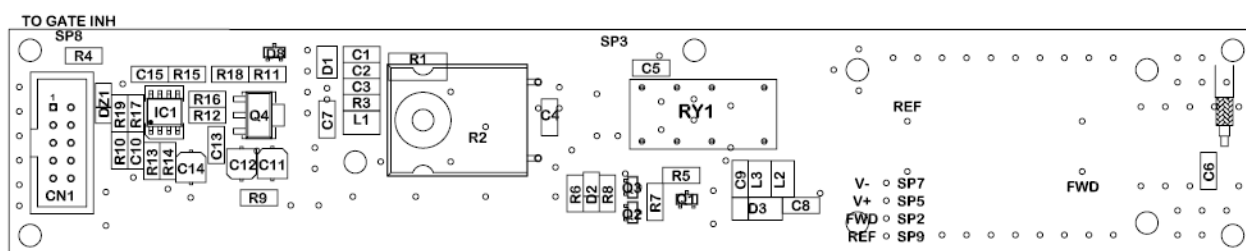


Mains Filter

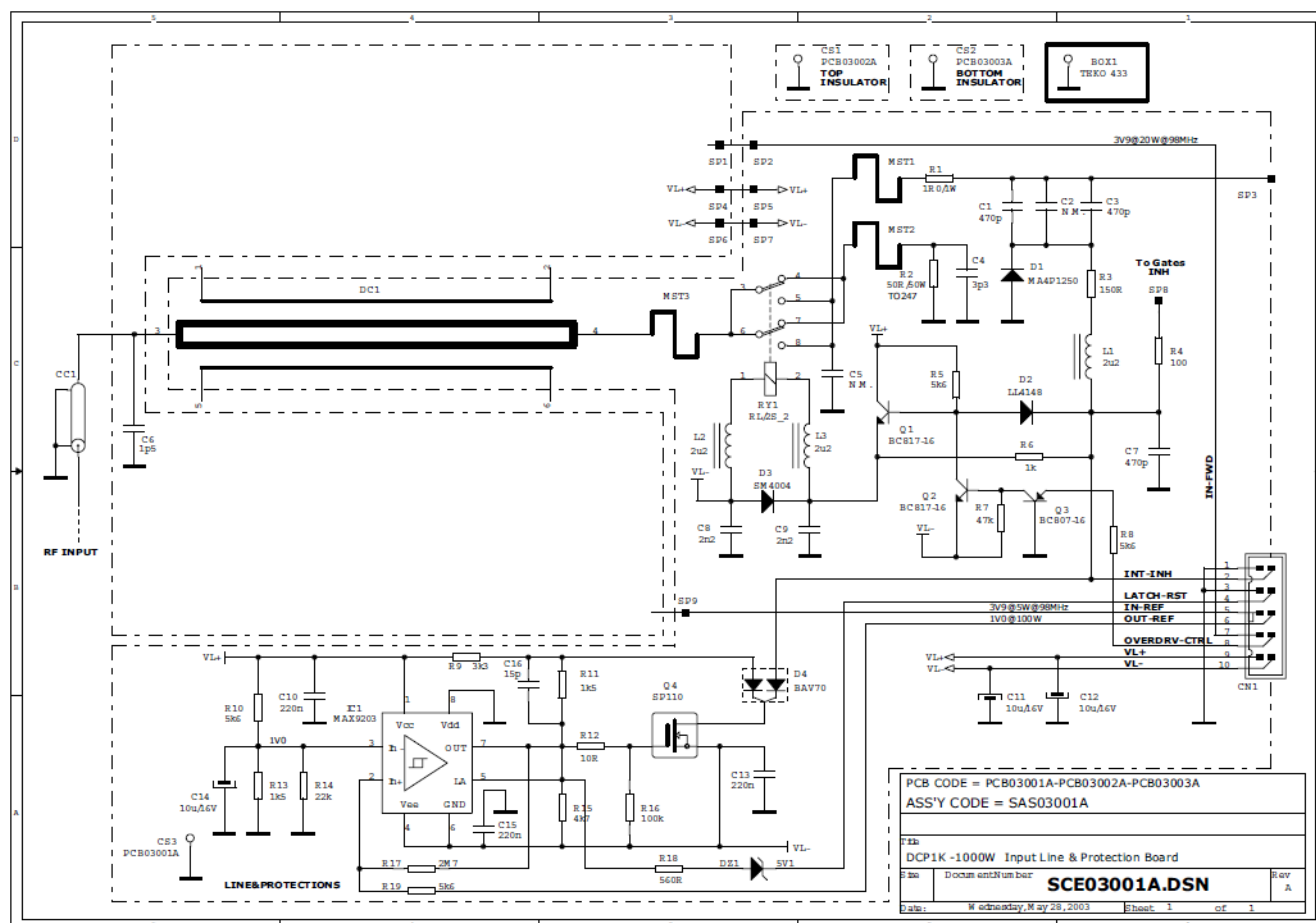


RF BLOCK



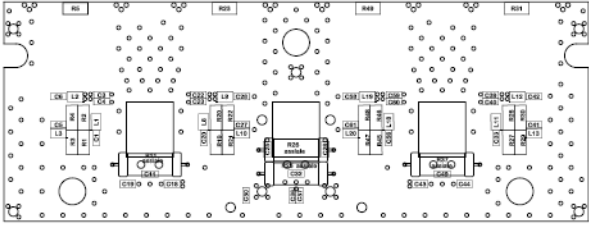


Doc. Description	DOC.DESCRPTION	Drawing	date	DATA
Product	PRODOTTO	Checked	-	-
Title	TITLE	Version	DATA	Sign
Assembly Code	ASSCODE	Version	DATA	Sign
PCB Code	PCB_CODE	Drw Code	DRW_CODE	

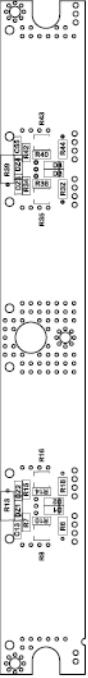






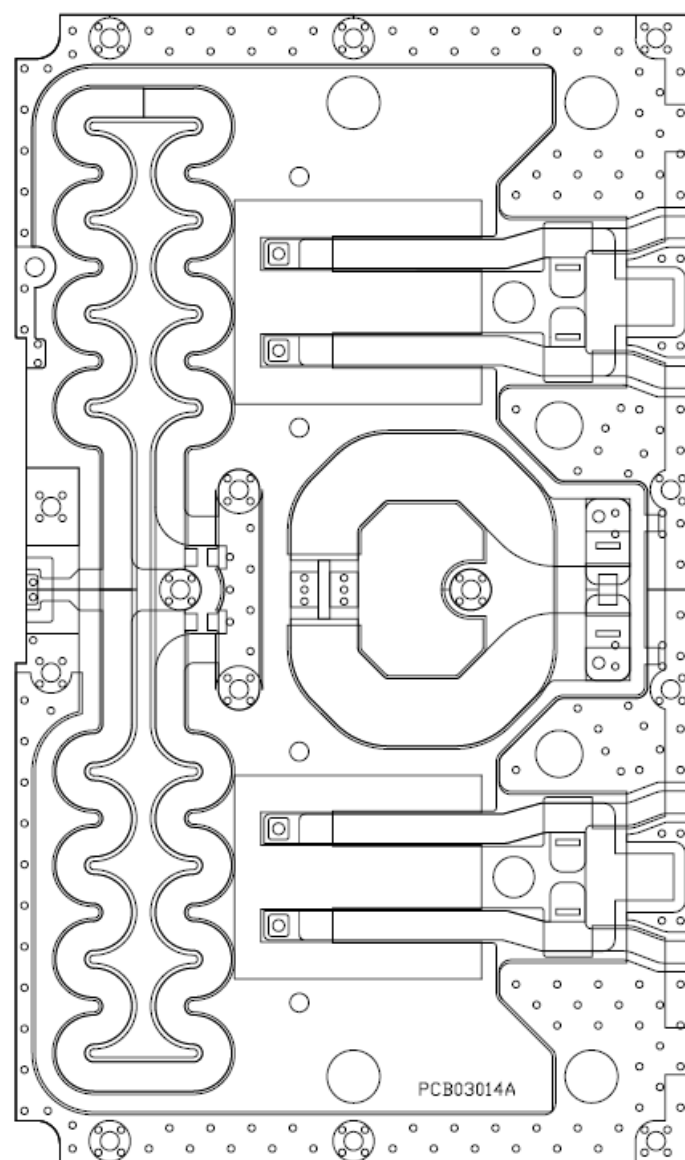


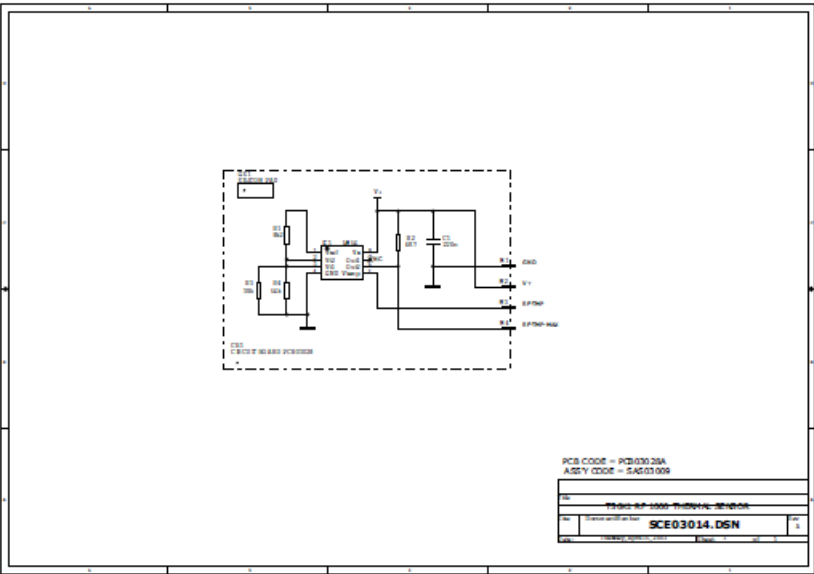
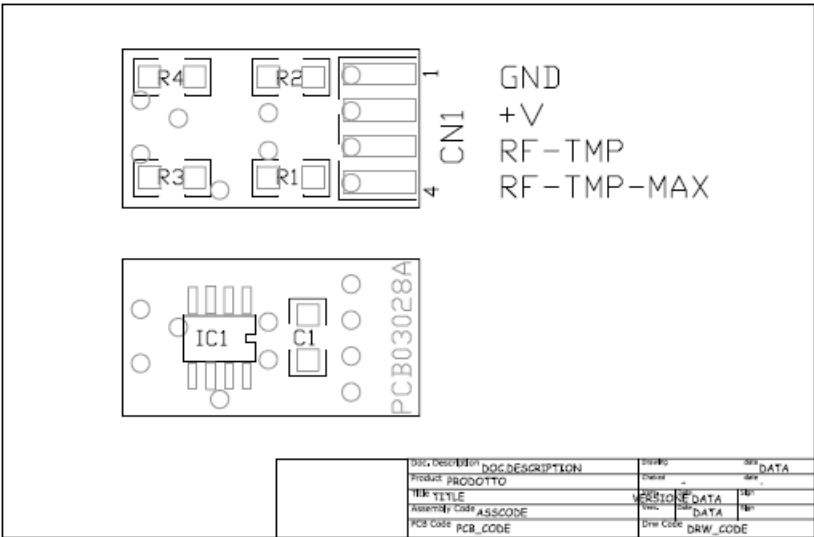
Doc. Description	Doc. Description	Type	Rev.
Product	PRODOTTI	Version	DATA
Title	TITOLO	Version	DATA
Assembly Code	ASSCODE	Rev.	DATA
PCB Code	PCB_CODE	Draw Code	DRW_CODE



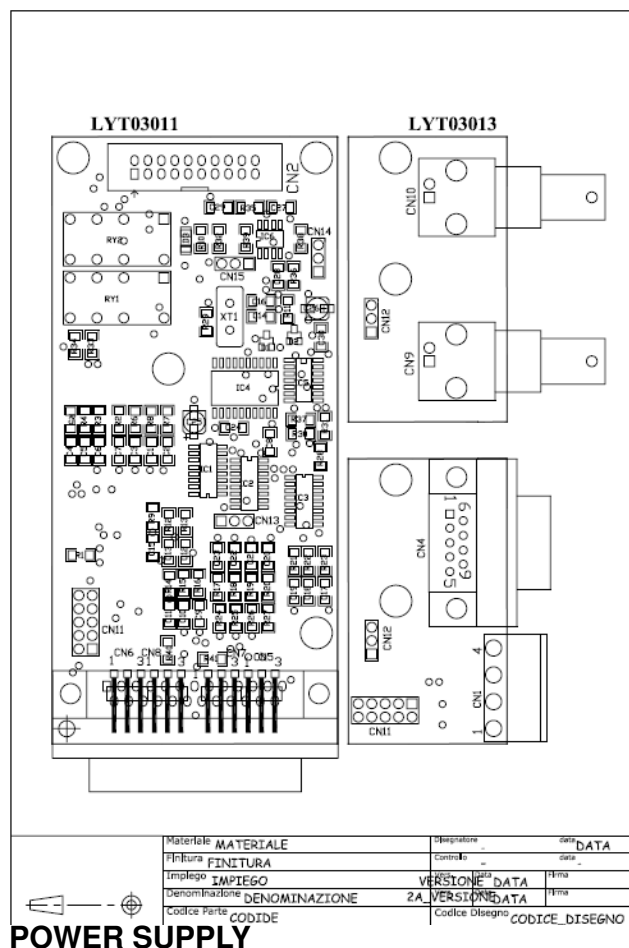
Doc. Description	Doc. Description	Type	Rev.
Product	PRODOTTI	Version	DATA
Title	TITOLO	Version	DATA
Assembly Code	ASSCODE	Rev.	DATA
PCB Code	PCB_CODE	Draw Code	DRW_CODE







Rear Interface



## POWER SUPPLY

