



# R-TEC RTAHRW6CV1W 6 Channel Remote with Scroll Wheel Adjustment User Manual

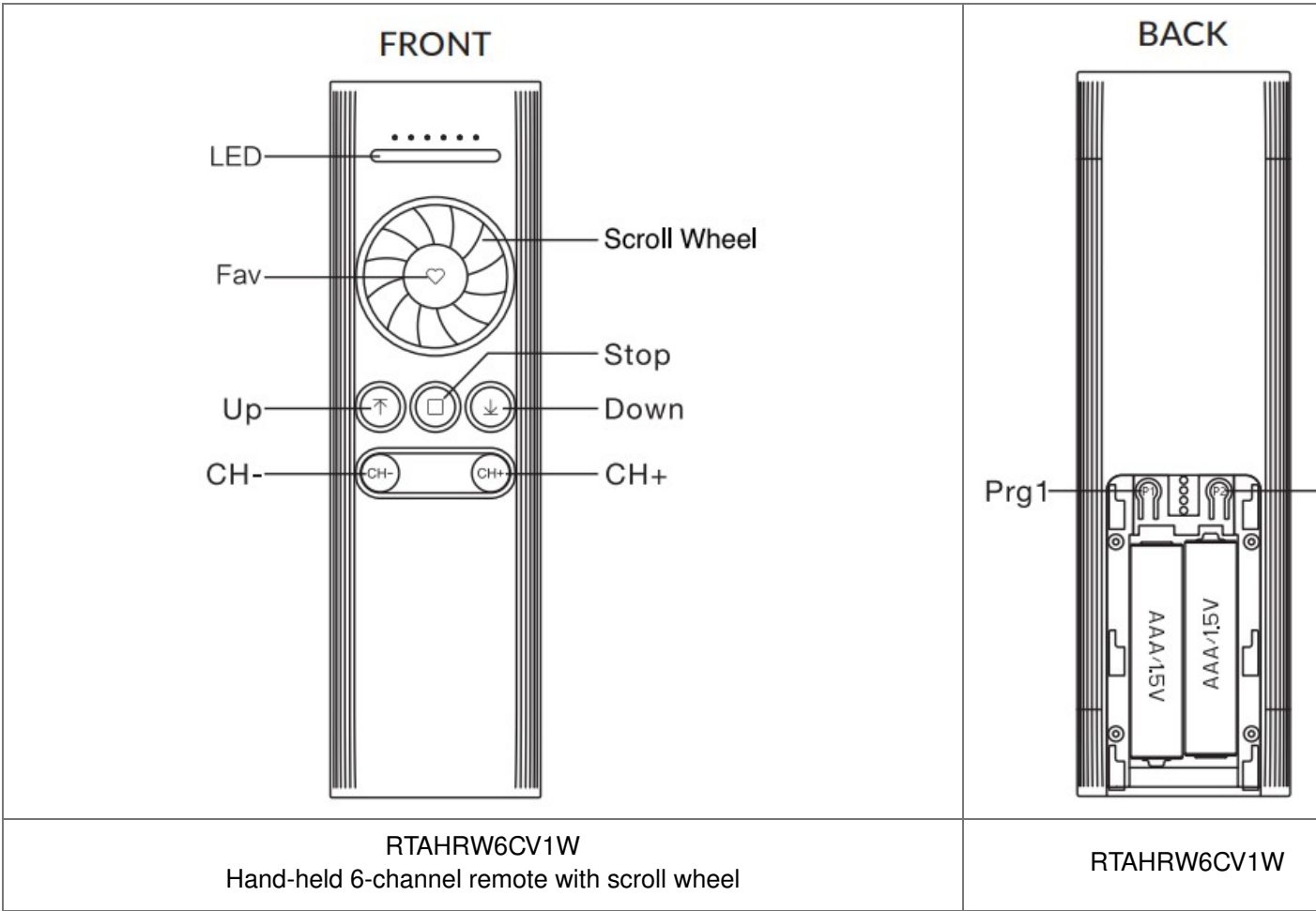
[Home](#) » [R-TEC](#) » R-TEC RTAHRW6CV1W 6 Channel Remote with Scroll Wheel Adjustment User Manual 

**R·TEC AUTOMATION<sup>®</sup> by Rowley<sup>®</sup>**  
**I-RTEC2**  
**6-Channel Remote with Scroll Wheel Adjustment**  
**RTAHRW6CV1W**  
**User Manual**

## Contents

- [1 PRODUCT DIAGRAM](#)
- [2 REMOTE SPECIFICATIONS](#)
- [3 CAUTION](#)
- [4 INSTRUCTIONS](#)
- [5 SCROLL WHEEL ADJUSTMENT](#)
- [6 Documents / Resources](#)
  - [6.1 References](#)

## PRODUCT DIAGRAM




**REMOTE SPECIFICATIONS**

For more information, please refer to the remote label.

Electrical Specification	Standard
Battery Type	AAA battery*2
Working Temperature	14°-122°F
Radio Frequency	433.92M±100KHz
Transmit Distance	>=98.5' indoor

**CAUTION**

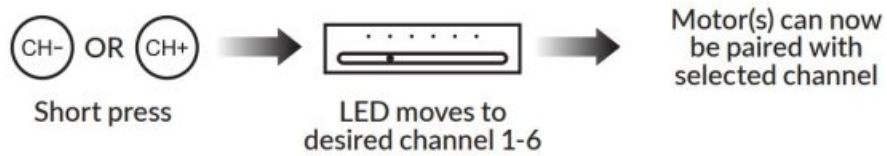
 **WARNING:** Important safety and operation instructions to be read before installation and use.

1. This product is intended for indoor use only. Do not expose the remote to moisture or extreme temperatures.
2. If the remote becomes less responsive and has a shorter transmission range, please check whether the battery needs to be replaced.
3. Use or modification outside the scope of this instruction manual will void warranty.
4. When the battery voltage is too low, the orange LED will flicker during operation.
5. Please properly dispose of used batteries and replace with only the specified battery type.

## INSTRUCTIONS

### Channel Selection

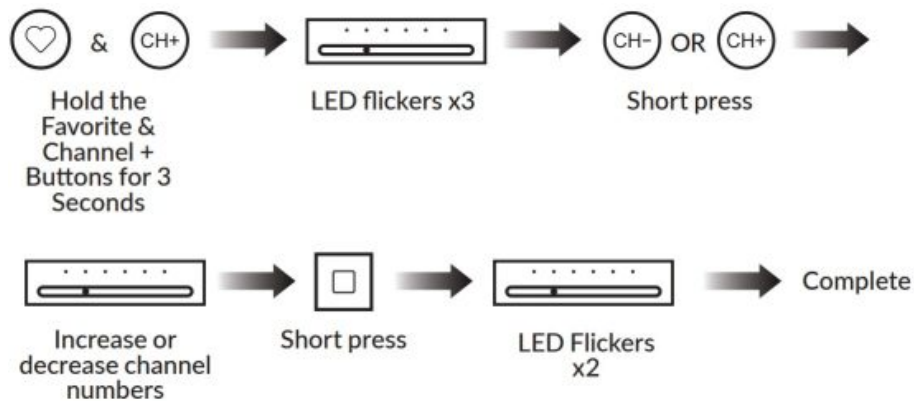
To change channels on the remote in order to pair with a single or multiple motors



**Note:** A maximum of 15 motors can be added to one channel. All motors added to the same channel will operate simultaneously.

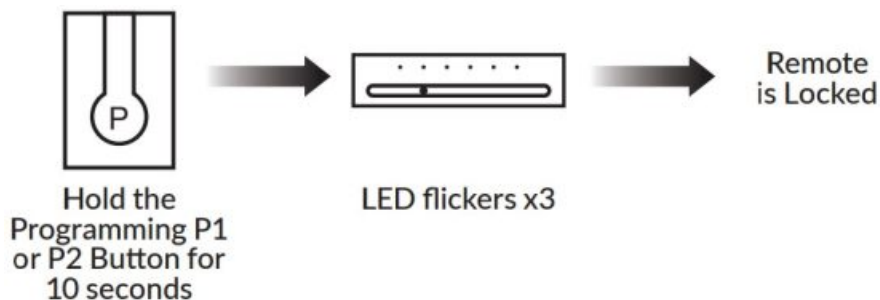
Follow the motor pairing instructions first before completing the remote settings below:

### Hide Unused Channels



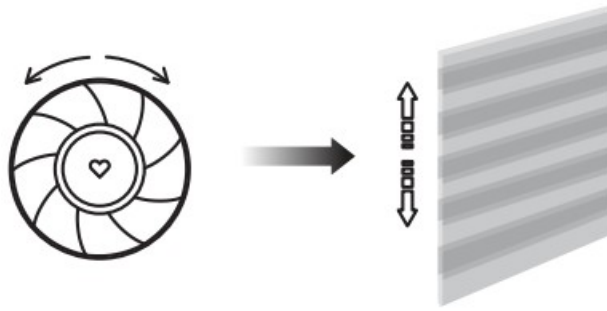
### Locking the Remote

Prohibits any programming or settings from being changed on the Remote.



To unlock the remote and allow programming once again, repeat the steps above.

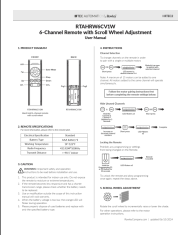
## SCROLL WHEEL ADJUSTMENT



Rotate the scroll wheel to incrementally raise or lower the shade.  
For other operations, please refer to the motor operation instructions.

[RowleyCompany.com](https://www.RowleyCompany.com)  
updated 06/10/2024

## Documents / Resources

	<p><a href="#">R-TEC RTAHRW6CV1W 6 Channel Remote with Scroll Wheel Adjustment</a> [pdf] User Manual</p> <p>I-RTEC2, RTAHRW6CV1W 6 Channel Remote with Scroll Wheel Adjustment, RTAHRW6CV1W, 6 Channel Remote with Scroll Wheel Adjustment, Remote with Scroll Wheel Adjustment, Scroll Wheel Adjustment, Wheel Adjustment, Adjustment</p>
--	--

## References

- [Drapery Workroom & Upholstery Supplies | Rowley](#)
- [User Manual](#)

### [Manuals+](#), [Privacy Policy](#)

This website is an independent publication and is neither affiliated with nor endorsed by any of the trademark owners. The "Bluetooth®" word mark and logos are registered trademarks owned by Bluetooth SIG, Inc. The "Wi-Fi®" word mark and logos are registered trademarks owned by the Wi-Fi Alliance. Any use of these marks on this website does not imply any affiliation with or endorsement.