

# R-TEC RJ45 Integration Support Apple HomeKit Instruction Manual

[Home](#) » [R-TEC](#) » R-TEC RJ45 Integration Support Apple HomeKit Instruction Manual 

## Contents

- 1 R-TEC RJ45 Integration Support Apple HomeKit Instruction Manual
- 2 Integration Support – Apple® HomeKit
  - 2.1 HomeKit – Your home at your command.
  - 2.2 Quick Tips
- 3 Example Voice Commands
- 4 Integration Instructions
  - 4.1 Initial Set Up
  - 4.2 How to Operate the Window Treatments from the Home App
  - 4.3 How to Create a Scene in the Home App
  - 4.4 How to Customize a Scene from your R-TEC Hub
  - 4.5 How to Customize your Home App
  - 4.6 Siri Expected Responses
- 5 HomeKit Troubleshooting:
- 6 How to Remove Locations from the R-TEC Automation® App
  - 6.1 How to Remove Locations from the Home App
- 7 Finding the Apple Home app on iPhone, iPad, or iPod devices
  - 7.1 Enable the HomeKit Privacy on your iPhone
  - 7.2 Pair the R-TEC Hub from the Home App
  - 7.3 Frequently Asked Questions
- 8 Frequently Asked Questions
- 9 Frequently Asked Questions
- 10 Read More About This Manual & Download PDF:
- 11 Documents / Resources
  - 11.1 References
- 12 Related Posts

## R-TEC RJ45 Integration Support Apple HomeKit Instruction Manual



### Integration Support – Apple® HomeKit

**HomeKit – Your home at your command.**

With the Home app, you can easily and securely control your HomeKit accessories from all your Apple devices. Turn off the lights, see who's at the front door, adjust your living room shade, turn up the music and so much more. The Home app makes all your connected devices work harder – and smarter – for you.



#### About Apple

HomeKit Apple HomeKit works with the R-TEC Hub to take control of your window treatments with your voice and Siri.

No matter which compatible accessories you choose, the Home App makes it easy to set up and control all of them, all from one place.



#### Getting Started

Before connecting Savant to your R-TEC Hub, please ensure the R-TEC Hub and window treatments are working. In order to control your window treatments with your voice, you will need the following:

- R-TEC Hub already setup and working
- R-TEC Automation® App and account
- Working window treatments with your R-TEC Automation® App
- Apple® HomeKit account and a compatible Siri device

The R-TEC Hub is a rich integration that supports discrete window treatment control and features a two-way communication system offering real time window treatment position and battery level status. The R-TEC Hub supports Ethernet Cable and Wireless Communication for home integration using the RJ45 port conveniently located on the back.



## Controlling Your R-TEC

Automation® Window Treatments Through Siri To create a seamless experience for hands free voice activation, consider the natural way you and your family would call a shade on any Siri enabled device. You may want to consider changing the name from Shade 1 to Living room Shade in your R-TEC Automation® App.



### Scene Control

HomeKit allows you to set customized scenes to activate multiple devices, ensuring your window treatments and other smart home compatible devices all work together.



### Group Control

Another method of operating window treatments through HomeKit is through rooms.

The Home App groups accessories by room, so you can easily control devices in any part of your house with a tap or a click.

These rooms need to be set up in the Home App, rooms created in the R-TEC Automation® App are not transferred over to Home App.

Once that room has been created in the Home App, triggering it to operate, is as simple as asking Siri to open / close that room.



### Percentage Control

An individual window treatment or group can be sent to any percentage of openness. The percentage will be based on the programmed limits on the motor.

A shade that is completely raised to its upper limit is at 0%, while a shade that is completely lowered to its lower limit is at 100%.

Example:

- To move an individual shade only a little down, simply say “Hey Siri, set Bedroom Shade to 22%.”



QUICK  
TIPS

### Quick Tips

Siri responds to names created in the R-TEC Automation® App. Avoid using the word drapery or shade in the R-TEC Automation® App description.

Example: Shade 1. This will conflict when you say open all shades. If you have changed the name of your shade in your R-TEC Automation® App, please ensure you force close the R-TEC Automation® App, then reopen the App. Open the Apple Home App to check the names migrated to Apple Home.

## Example Voice Commands

Voice Command	Expected Window Treatment Movement or Response

Close / Open <treatment name>	Treatment will close / open to top or bottom limit
Close / Open <room name> shades / drapery	Room will close / open to top or bottom limit (rooms are set up in the Home App)
Set <treatment name> to <percentage>	Treatment will move to the called percentage. 100% is open. 0% is closed.
Close / Open <treatment name> to <percentage>	Treatment will move to the called percentage. 100% is open. 0% is closed.
Close / Open <treatment name> <a little bit>	Treatment will close or open 10% of the total limit to the direction of the called limit
Close / Open <treatment name> halfway	Treatment will move to 50% from top or bottom limit
Close / Open Shades	All shades in the R-TEC Automation® App will follow the close or open command
Close / Open Draperies	All draperies in the R-TEC Automation® App will follow the close or open command
Raise / Lower Shades	All shades in the R-TEC Automation® App will follow the close or open command

Are <treatment name> open?	Siri will respond yes or no your treatment is open or closed
What's the position of <treatment name>?	Siri will respond the percentage of the treatment percentage is "x"
What's the battery percentage of <treatment name>?	Siri will respond either Critical or Normal. Normal is above 50%. Critical means recharge now.

## Integration Instructions

### Initial Set Up

Open the HomeKit App.

From the Home Screen, select "Add Accessory" icon.

Scan the QR Code at the rear of the Hub, to synchronize with the HomeKit function of your Apple device.

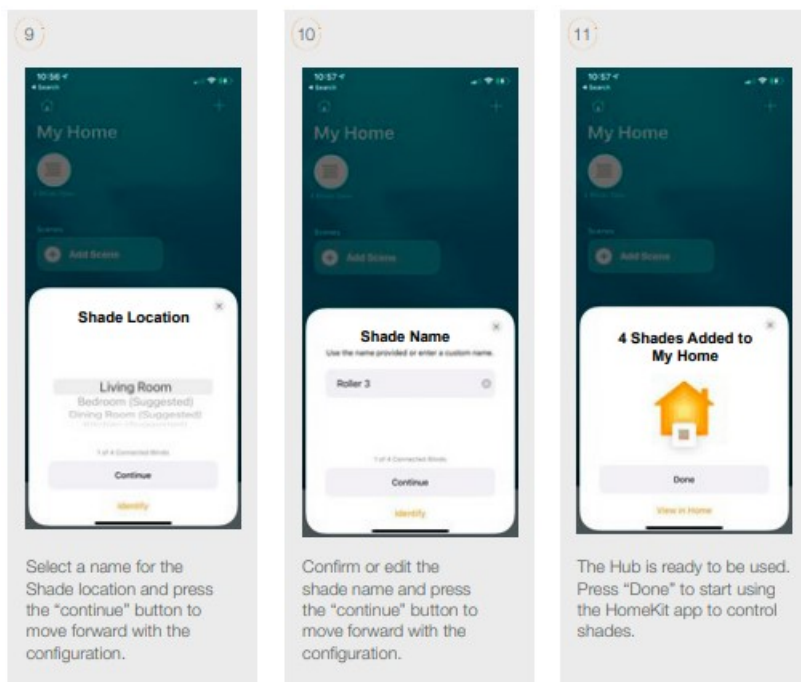
Press the "add to home" button on the screen to proceed adding the R-TEC Hub to the HomeKit App.

The Hub has been added on the HomeKit App.

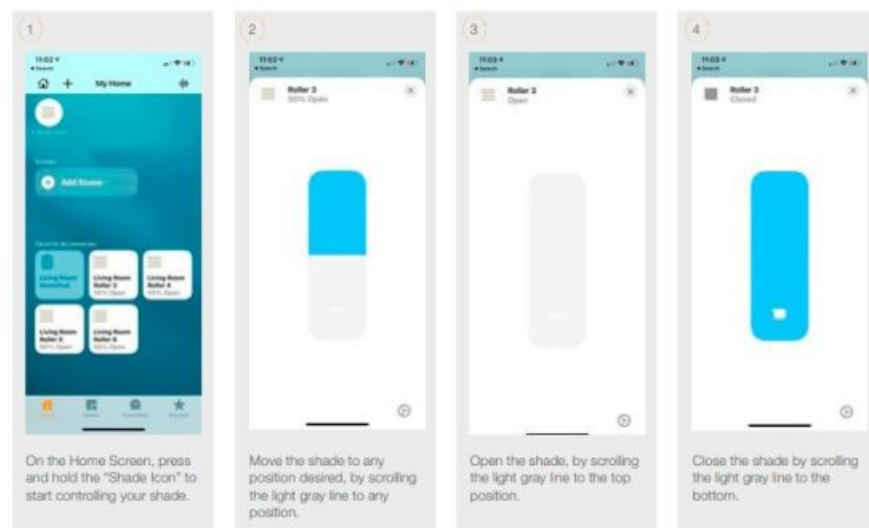
Select a name for the Hub location and press the "continue" button to move forward with the configuration.

Confirm or edit the Hub name and press the "continue" button to move forward with the configuration.


Confirm the shade device and press the "continue" button to move forward with the configuration.



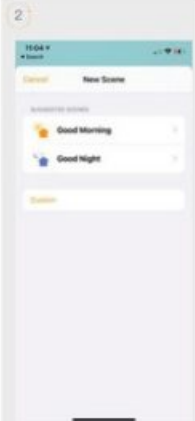
## How to Operate the Window Treatments from the Home App



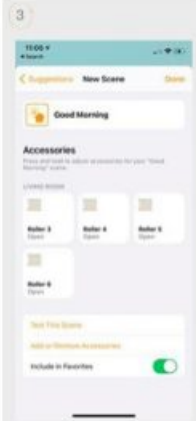
## How to Create a Scene in the Home App




Click in the "+" and select the "Add Scene" button to begin programming your desired scene.




Select the suggested scene "Good Morning" in the Home App to create the scene.



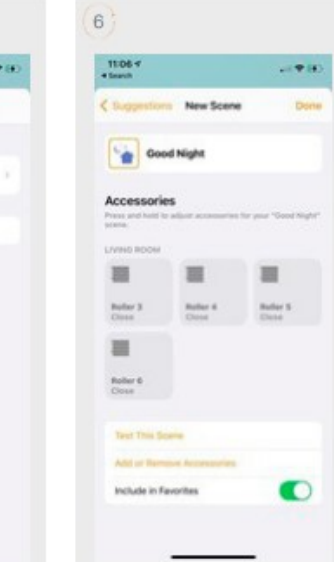
Move the shade to any position desired, before completing the set up to the scene.



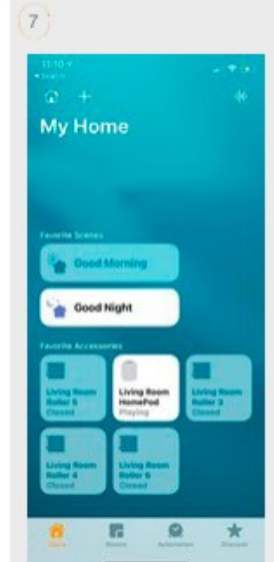
If you select the "Good Morning" Scene, you can Open a shade or group of shades, as have been programmed.



Select the suggested scene "Good Night" in the Home App to create the scene.




Move the shade to any position desired, before completing the set up to the scene.




If you select the "Good Night" Scene, you can Close a shade or group of shades, as have been programmed.

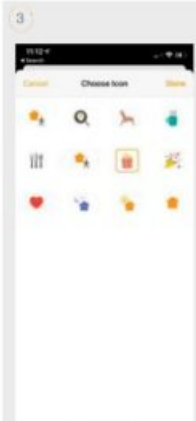
## How to Customize a Scene from your R-TEC Hub



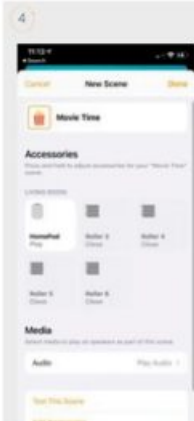
Click in the "+" and select the "Add Scene" button to begin programming your customized scene.



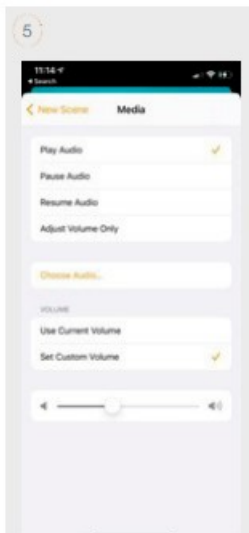
If you select the "Custom" Scene, you can create a customized scene for shades, with icon, name, and position desired.



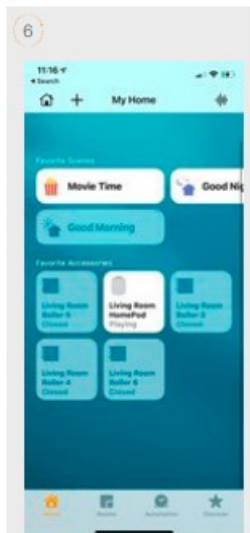
Select the appropriate icon for the Scene.



Customize the name of your scene accordingly and set the desired position of your shade.



If you have any other HomeKit device available on Home App you can also include it into the "Customized Scene" as the Homepod device.



If you select the "Movie Time" Scene, you can move a shade or group of shades, that have been programmed. Also, you can activate the Homepod device.

## How to Customize your Home App



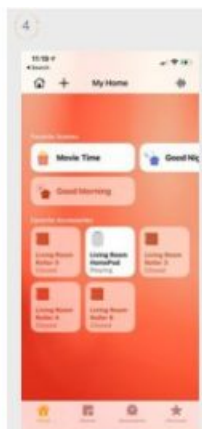
If you prefer, customize the Room color and name according you desired.



Select which color or image you want to use to customize your Home App.



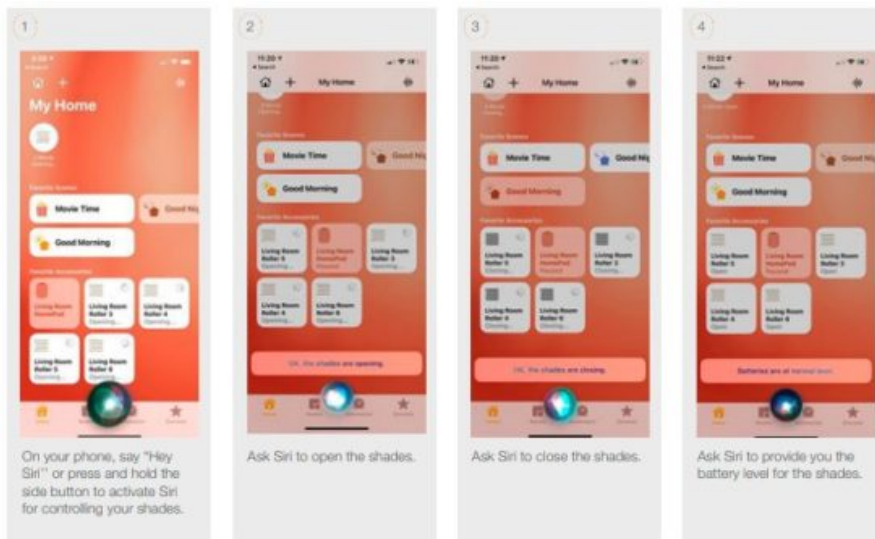
Update the image the "old color" on your Home App as needed.



Update the image the "new color" on your Home App as needed.

## Siri Expected Responses

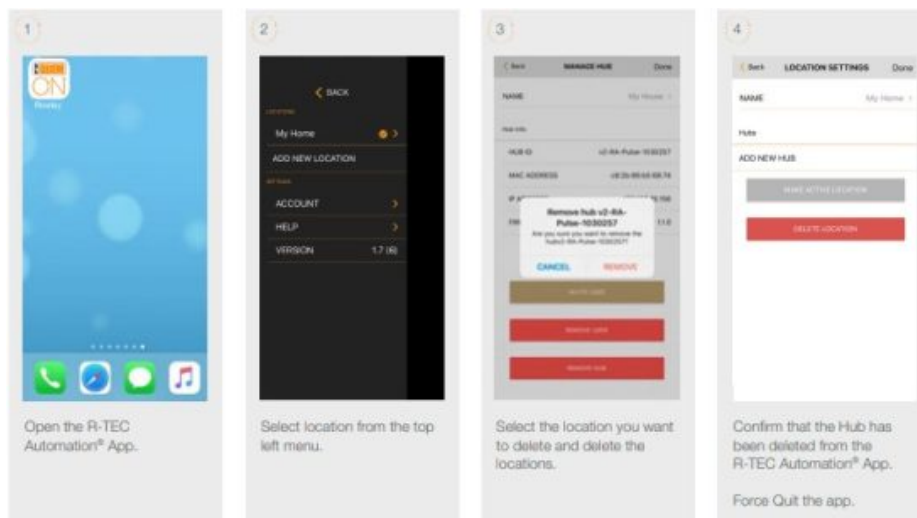




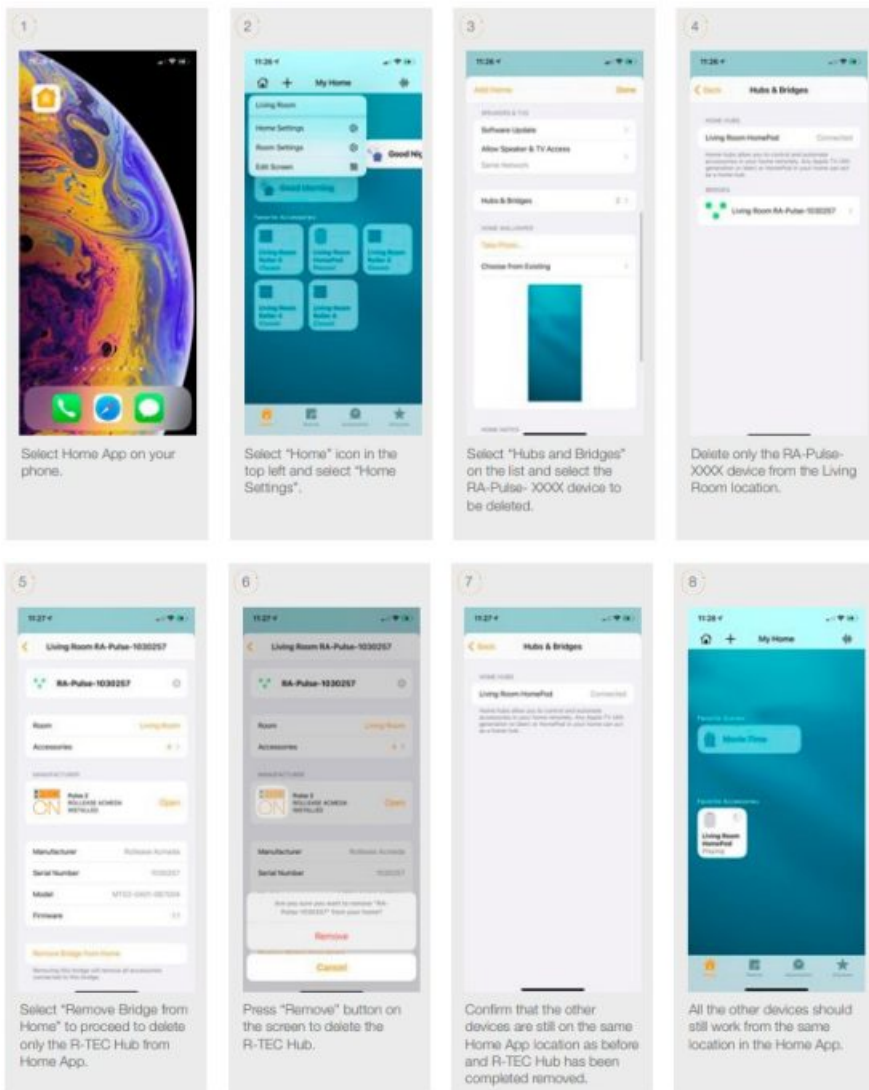
## HomeKit Troubleshooting:

If you have failed to pair your R-TEC Hub to the R-TEC Automation® App or HomeKit, you may need to first remove the location in the Home App. Here are the steps to clear the locations out of the apps.

## How to Remove Locations from the R-TEC Automation® App



## How to Remove Locations from the Home App

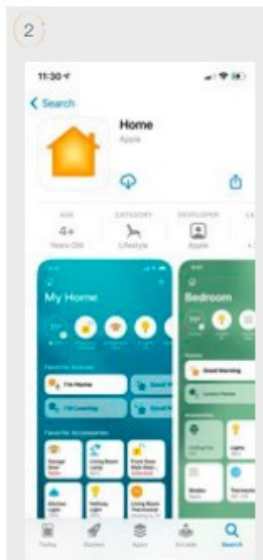


## Finding the Apple Home app on iPhone, iPad, or iPod devices

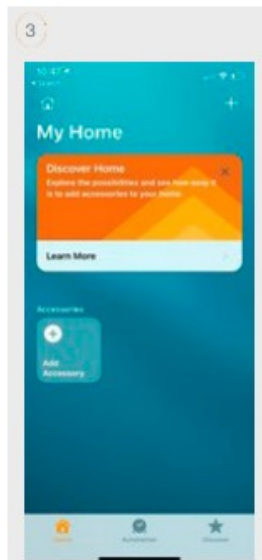
In some cases the Apple® Home App may not be installed on your phone. Follow below steps install the Home App.



Select "Settings" and verify its installed. If it is not installed on your iPhone, download the app by visiting, [apps.apple.com/us/app/home/id1110145103](https://apps.apple.com/us/app/home/id1110145103).



Download the Home App.



The Home App is now ready. Refer to the Initial Setup on pages 2 - 3.

## Enable the HomeKit Privacy on your iPhone

In some cases, the user doesn't allow the Apple HomeKit on your phone, and it doesn't allow you pair your R-TEC Hub with the R-TEC

Automation® App. If you are facing a kind of issue, please follow the steps below.



Make sure the R-TEC Automation® App has Home Data permission. If it's not allowed, the pairing process will fail.



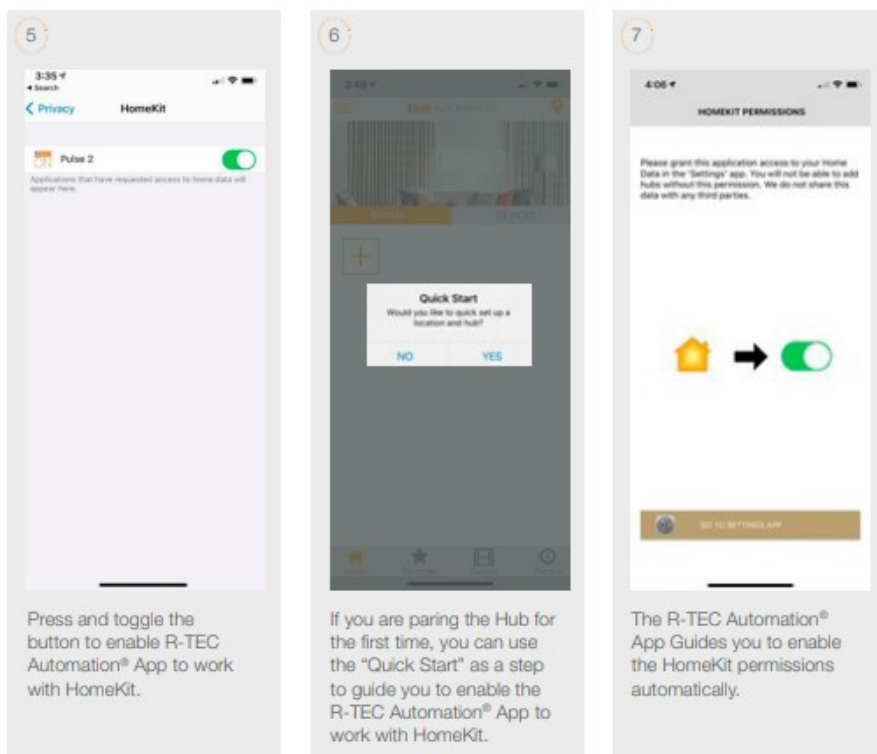
If it's not allowed, the R-TEC Hub will not come up, forbidding you to proceed with the pairing process.



If that happens, you can enable manually. Select "Settings" and type HomeKit.

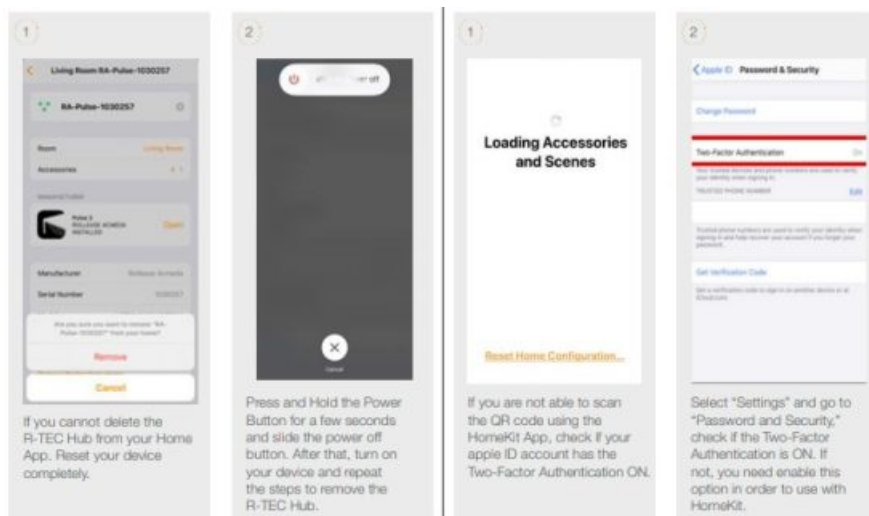


Press the HomeKit Privacy icon and enable the R-TEC Automation® App to work with HomeKit.



## Stuck on HomeKit – Can't Delete the Home from your HomeKit App

In some cases, the Apple HomeKit doesn't allow you to delete the home from the Home App. In order to delete the home from your HomeKit App, you need to reset your device completely and try again.



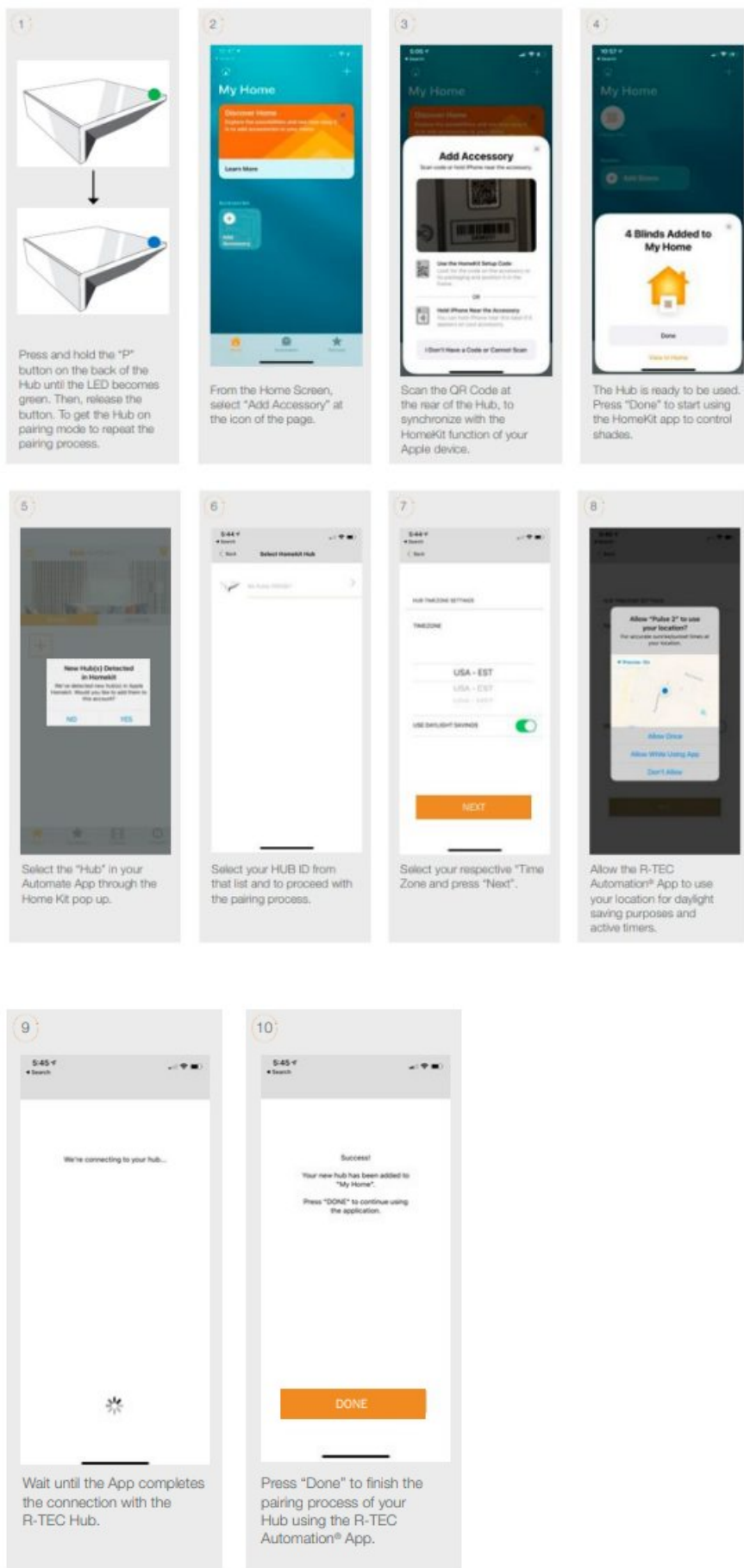
## Can't use or scan the QR Code using HomeKit App

In order to use the HomeKit App in your devices, you need make sure that the Two-Factor Authentication is ON. If not, you can't use your

Home App to control any treatments. Follow the steps below in order to confirm that your Two-Factor Authentication is "ON" in your device.

## Pair the R-TEC Hub from the Home App

It is possible to use the Home App as an alternative option to be provisioning the R-TEC Hub on the Wi-Fi and then start the configuration on the R-TEC Automation® App.



## Frequently Asked Questions

**Q: What Does "HomeKit" mean for the R-TEC Hub?**

A: R-TEC Automation window treatments can be operated by talking to Siri in your home if you have the R-TEC Hub connected to your Router via Lan or Wi-Fi and the free R-TEC Automation® App installed on an iOS device using iOS 11.3 or higher with Apple® HomeKit. Also, you can send the commands to your window treatment operating any HomeKit-enabled products outside the home talking to Siri requires fourth Generation Apple TV or Homepod. For more information on HomeKit, visit <https://support.apple.com/en-us/HT204893>.

**Q: Can I control my window treatments via Siri from anywhere?**

A: Siri will only operate the window treatments if you are connected via local Wi-Fi. Alternatively set up a Home Pod, Apple TV or iPad as a home hub to grant you access to remotely control your HomeKit devices.

**Q: What Apple hardware / software is required for HomeKit?**

A: An iPhone®, iPad®, or iPod® touch with iOS 11.3 or later is required for HomeKit. You can check your iOS version in Settings > General > About > Version.

For remote access, you'll need to have a third generation or later Apple TV with software version 7.0 or later in your home or a Homepod Device. Follow the steps here to make sure you have a supported Apple TV or Homepod: <https://support.apple.com/en-us/HT200008> or <https://www.apple.com/homepod/>.

Remote access through Apple TV may require you to log out of iCloud® and log back in on your Apple TV.

Tip: Siri® will be more responsive if you set the "Sleep After" setting to "Never" in Settings >. If you have any other issues setting up Apple TV, please contact Apple Customer Support.

## **Frequently Asked Questions**

**Q: What R-TEC Automation® hardware/software is required for HomeKit?**

A: An R-TEC Hub is required, as well as the latest version of iOS R-TEC Automation® App.

**Q: Do the R-TEC Hub with HomeKit features work with non-Apple smartphones & tablets (Android™)?**

A: The R-TEC Automation® App for the R-TEC Hub is available for Android. However, Android devices do not have Siri and do not support third party HomeKit apps.

**Q: Can everyone in the home use Siri from their own iOS device?**

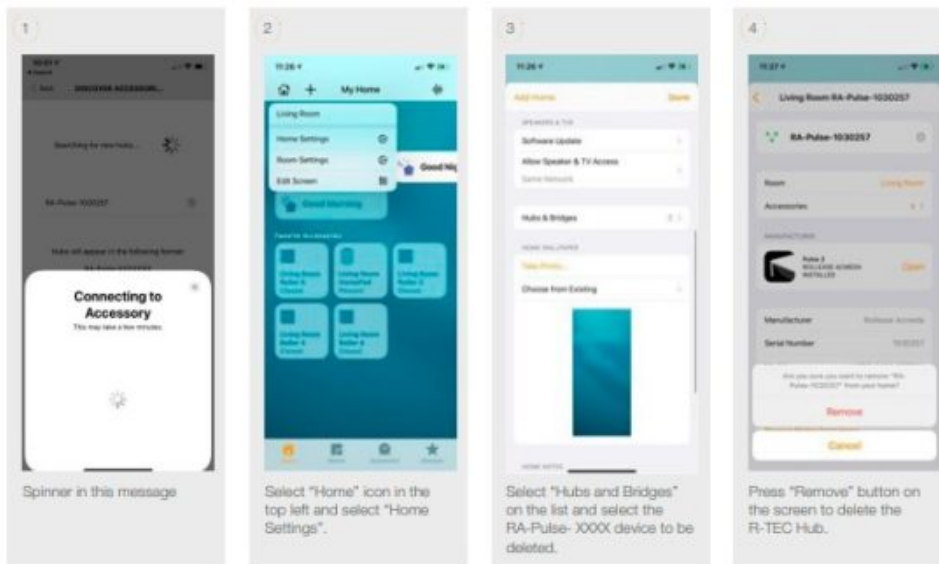
A: Using the HomeKit App, you can share control with family and friends. And get notifications about the activity in your home so you never miss a thing.

For more information on HomeKit, visit <https://support.apple.com/en-us/HT204893>. Frequently Asked Questions

**Q: How do I find the Apple Home App on iPhone OS 12.4.3 or below?**

A: If your R-TEC Automation® App fails or with a message saying "ERROR", there is issue to connecting with your R-TEC Hub with HomeKit.

Please ensure your R-TEC Hub is removed from the HomeKit App and try again. Go to the HomeKit App (this App is on your iOS device whether you have used it or not), select the house icon in the upper left corner of the home screen, select 'Home Settings', select 'Hub Location' (Hub location is automatically added to 'Home' when pairing in app), scroll down and select 'Remove Home'. Go back to the R-TEC Automation® App and start from the beginning.



If you want to start from the beginning, please ensure that you are pressing the “P” button on the back of the R-TEC Hub to repair it again either from R-TEC Automation® App or from HomeKit App.

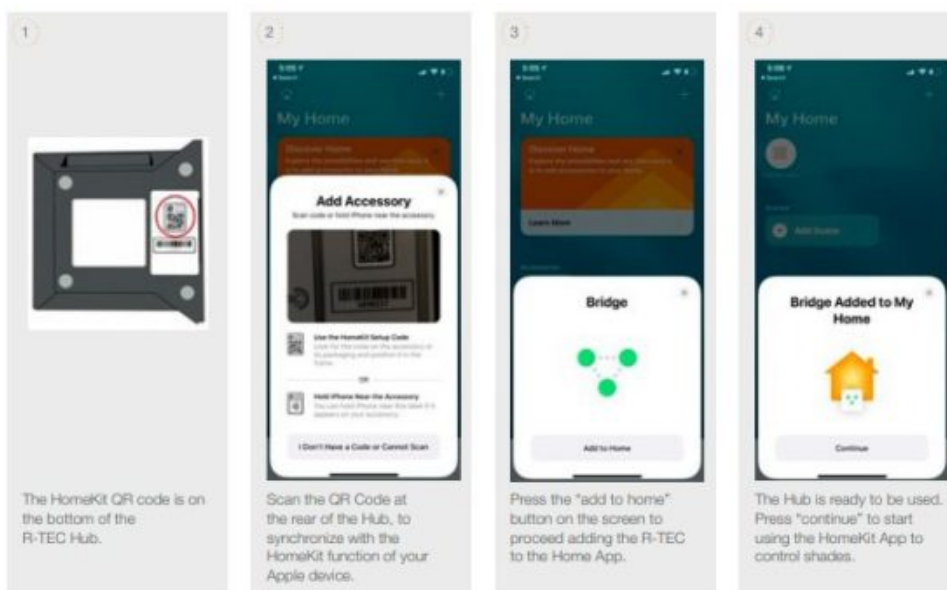


After remove, the R-TEC Hub from Home App, press and hold the “P” button on the back of the Hub until the LED becomes green. Then, release the button. To get the Hub on pairing mode to repeat the paring process.

## Frequently Asked Questions

Q: Where is the HomeKit QR Code Located on the R-TEC Hub?

A: The HomeKit QR code is located on the bottom of the Hub. The house icon in the top left of the QR code represents the Home App for HomeKit.



If the QR scan fails, you will be prompted to enter the setup code. This code is the eight-digit number located in the top right of the QR code.





If you fail to scan the HomeKit QR Code, press "I don't have a code or Cannot Scan" to add it manually.



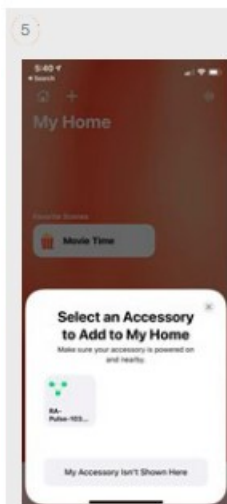
If your device still not showing up on the list, press "My accessory isn't shown here" to move to the next step.



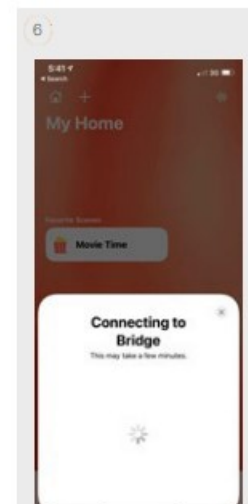
On the Home App screen, select "Enter Code" to enter it manually.



Type the HomeKit Setup code available on the label on the bottom of the R-TEC Hub.



The R-TEC Hub will show up as a new accessory available on Home App to be added.

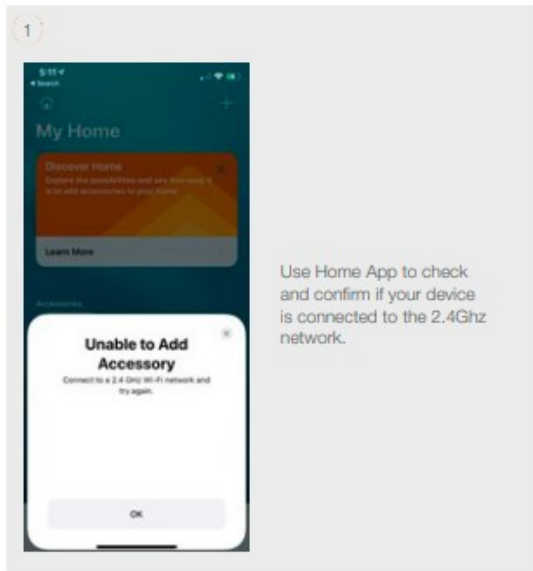


Select the R-TEC Hub and wait until the Home App complete the process to add the Hub into it.

**Q: How to identify if my phone device is connected to a 2.4Ghz or 5Ghz?**

A: When you use the HomeKit QR code to pair the R-TEC Hub, the app shows you if you are not connected to the proper network.






Still have Questions?

For questions about R-TEC Automation® products, contact our in-house experts at 866.985.3423.

Email us at RTECAutomation@RowleyCompany.com. For Technical Support, contact Apple at 1.800.275.2273 (US) or 1.800.263.3394 (Canada).

***Read More About This Manual & Download PDF:***

## Documents / Resources

	<p><a href="#">R-TEC RJ45 Integration Support Apple HomeKit</a> [pdf] Instruction Manual RJ45 Integration Support Apple HomeKit, RJ45, Integration Support Apple HomeKit</p>
---	--

## References

- [Connecting to App Store](#)
- [Identify your Apple TV model - Apple Support](#)
- [Add an accessory to the Home app - Apple Support](#)
- [HomePod - Apple](#)