



I-RTEC1 R-TEC Automation Li ion Battery Motors



I-RTEC1 R-TEC Automation Li ion Battery Motors Instruction Manual

[Home](#) » [R TEC AUTOMATION](#) » I-RTEC1 R-TEC Automation Li ion Battery Motors Instruction Manual 

Contents

- [1 I-RTEC1 R-TEC Automation Li ion Battery Motors](#)
- [2 Product Usage Instructions](#)
- [3 PRODUCT INFO](#)
- [4 SAFETY](#)
- [5 MOTOR HEAD FUNCTION AT A GLANCE](#)
- [6 SET UP](#)
- [7 OTHER OPERATIONS](#)
- [8 TROUBLESHOOTING](#)
- [9 FAQ](#)
- [10 Documents / Resources](#)
 - [10.1 References](#)



I-RTEC1 R-TEC Automation Li ion Battery Motors



Specifications

- **MOTOR MODELS:**
 - RTA25L2C1WA – 25mm, 1.1Nm
 - RTA25L3C1WA – 25mm, 2Nm
 - RTA28L3C1WA – 28mm, 2Nm
- **BATTERY:** Li-ion 2-Cell, Li-ion 3-Cell, Li-ion 3-Cell
- **CHARGING:** USB-C, USB-C, USB-C
- **SPEED:** 20/25/30rpm, 20/24/28rpm, 20/24/28rpm

Product Usage Instructions

Safety and Important Information:

1. This product is for indoor use only; do not use outdoors or in humid environments.
2. Always fully charge the motor's battery before first use (6-8 hours).
3. Use only the recommended R-TEC Automation USB-C Charging Cable to charge the motor battery.
4. Avoid using the motor while it is charging.
5. Do not modify or use the product beyond the scope of the instruction manual.
6. Installation and programming should be done by a qualified installer.

Charging Instructions:

- Use the provided USB-C charging cable to charge the motor's battery. Ensure the max input voltage is not exceeded (5V/2A).
- Fully charge the battery before initial use and avoid using the motor while charging.

Motor Head Functions:

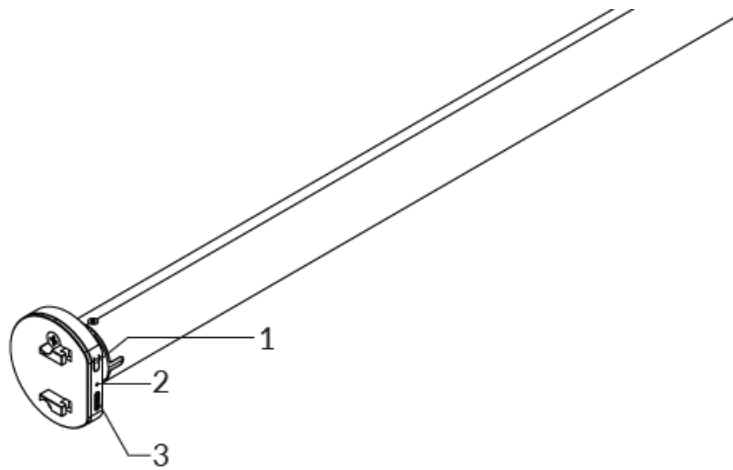
The Motor Head Button (H) controls various functions of the motor:

- **Jogging:** Short press for UP/STOP/DOWN of the Shade.
- **Adding/Removing Controller:** Hold for 2 seconds to add or remove a controller.
- **Sleep Mode Control:** Hold for 6 seconds to toggle RF control.
- **Direction Reverse Reset:** Hold for 10 seconds to reverse direction or 16 seconds to reset all settings.

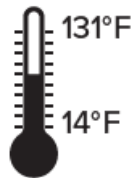
Pairing Motor with Remote:

1. Locate the H button on the Motor and ensure remote setup is completed.
2. To pair a new remote:
 - Hold the H button on the motor head for 2 seconds.
 - Select the desired channel on the remote and press the Programming button (P or P2).
 - A maximum of 15 motors can be added to one channel for simultaneous operation.

PRODUCT INFO



1. Motor Head Button (H)
2. LED Indicator Light
3. USB-C Charge Port



Motor Operating Temperature Range:



Power Options:

- Standard USB-C charging cable
- Magnetic charging cord with USB-C adapter.
- Fully Charge the motor for 6-8 hours

NOTE: If the USB-C magnetic charging cord & adapter is desired, leave the adapter plugged into the motor head for future re-charging convenience.

R-TEC Automation Li-ion DC Motor 1-Way

MOTOR MODELS	MOTOR DIAMETER	TORQUE	BATTERY	CHARGING	SPEED
RTA25L2C1WA	25mm	1.1Nm	Li-ion 2-Cell	USB-C	20/25/30rpm
RTA25L3C1WA	25mm	2Nm	Li-ion 3-Cell	USB-C	20/24/28rpm
RTA28L3C1WA	28mm	2Nm	Li-ion 3-Cell	USB-C	20/24/28rpm

SAFETY

WARNING: Important safety and operation instructions to be read before installation and use.

1. This product is for indoor use only, do not use outdoors or in humid environments.

2. This motor has a built-in rechargeable Li-ion battery pack with integrated charge management. Max input voltage: 5V/2A.
3. Fully charge the motor's battery before first use. (6-8 hours). Only use the recommended R-TEC Automation USB-C Charging Cable to charge the motor battery.
4. When the battery voltage is low the LED light will flicker 8 times and give a low-voltage alarm when the motor starts.
5. The motor will jog in operation, please do not proceed to the next step until it complete.
6. The duration of button transmission on the remote is 10s. If there is no operation within 10s the remote will automatically exit the current mode.
7. The motor can be paired with max 10 controllers.
8. Do not use motor when charging.
9. Upper & Lower limits cannot be set at the same position, limits saved even power off.
10. Use or modification outside the scope of this instruction manual will void warranty.
11. Installation and programming to be performed by a suitably qualified installer.

MOTOR HEAD FUNCTION AT A GLANCE


Motor head H button functions

FUNCTIONS	OPERATION	JOGGING TIME	LED LAMP FLICKERS	NOTE
Control the UP/STOP/ DOWN of the Shade	Short press	/	/	Can only operate after the limits are set and motor is not in sleep mode
Adding/Removing Controller	Hold for 2s	Jog*1	Flicker*1	Operation needs be done within 10s
Sleep mode, RF Control Inactive	Hold for 6s	Jog*2	Flicker*2	Hold H button for 6 seconds, jog twice to make the motor RF control inactive; Hold H button for 2 seconds, the RF control is active again
Direction Reverse	Hold for 10s	Jog*3	Flicker*3	All settings saved after direction reversed
Reset	Hold for 16s	Jog*4	Flicker*4	All setting deleted

SET UP

BEFORE SET UP

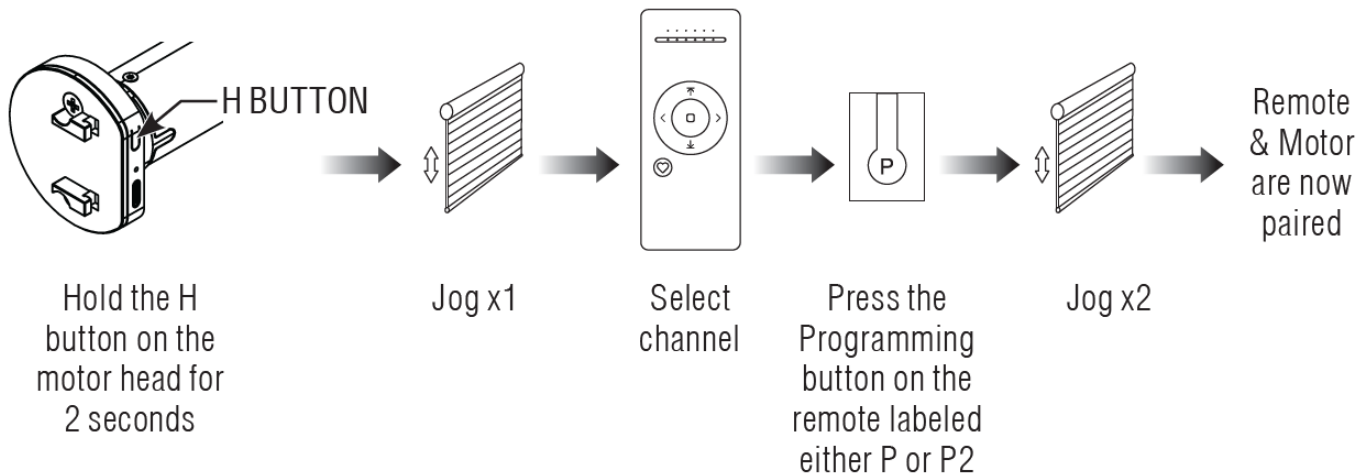
- Locate the H button on the Motor. Also check the remote battery compartment to install batteries or remove the insulation tab before use.

- Keep the cover removed to allow access to the programming P or P2 buttons  until after set up is completed.

STEP 1: PAIRING MOTOR WITH REMOTE

Before pairing, see remote instructions on how to select the desired channel in order to add your motor(s).

To add a new remote:

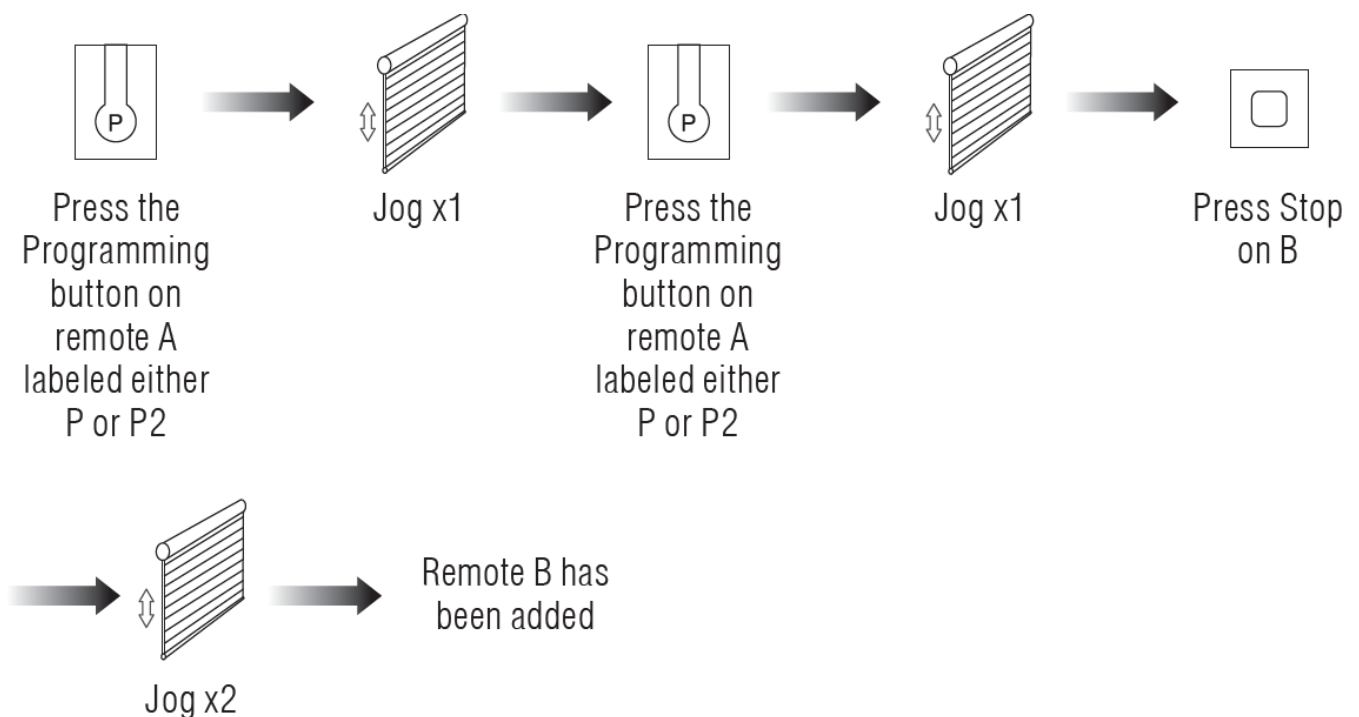


Note: A maximum of 15 motors can be added to one channel.
All motors added to the same channel will operate simultaneously.

To add an additional motor B:

- To add an additional motor to the same channel follow the steps above for motor B.
- To add an additional motor to a different channel, toggle remote to new channel then follow the steps above for motor B.

To add an additional Remote B via pre-existing Remote A

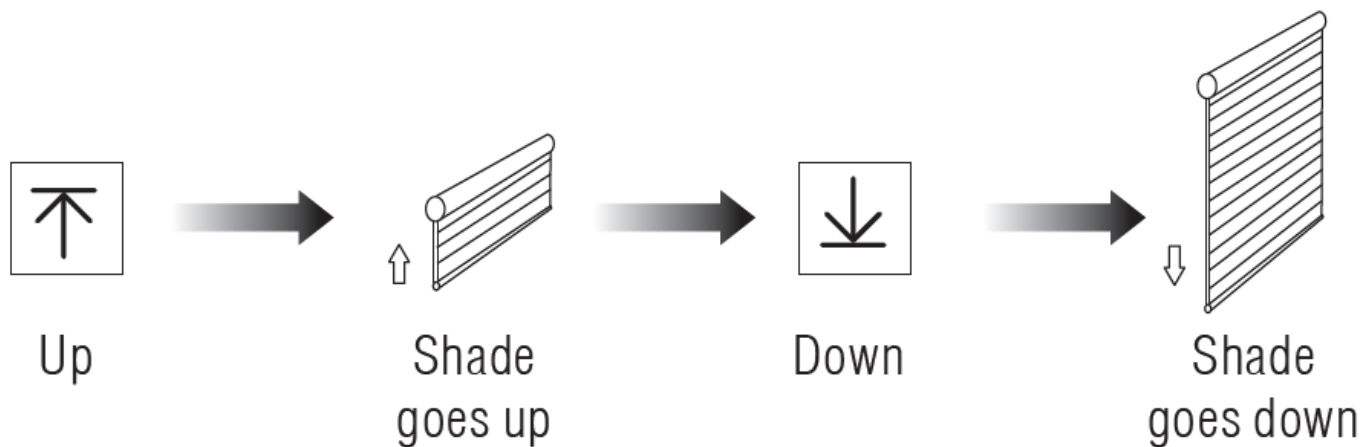


Note: A maximum of 15 motors can be added to one channel.

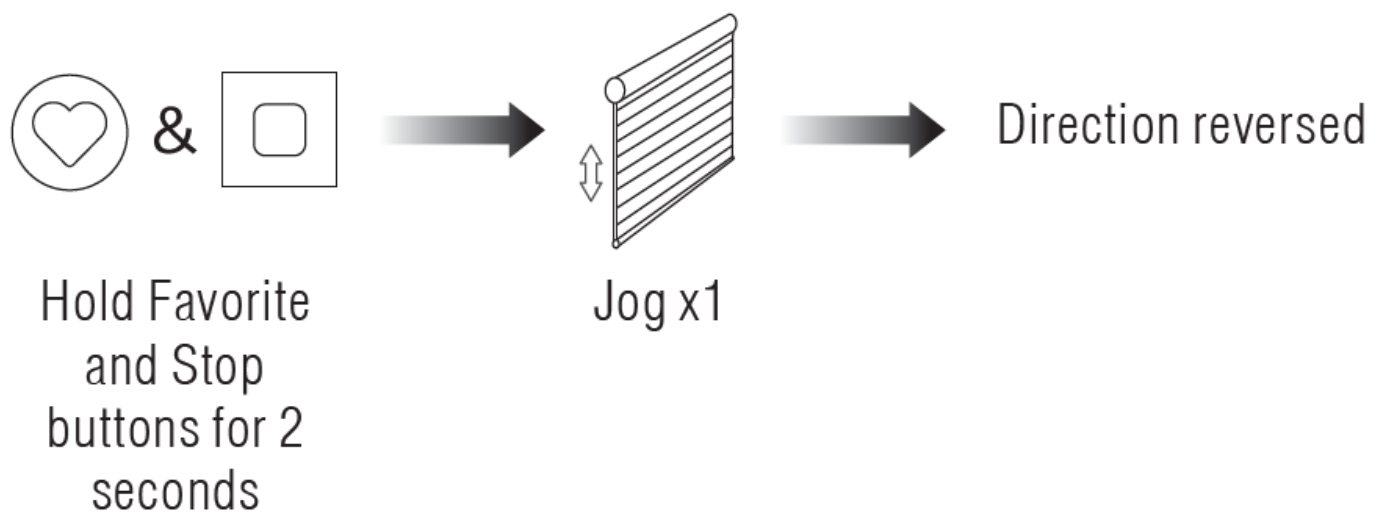
All motors added to the same channel will operate simultaneously.

STEP 2: CHECK OR REVERSE DIRECTION OF MOTOR

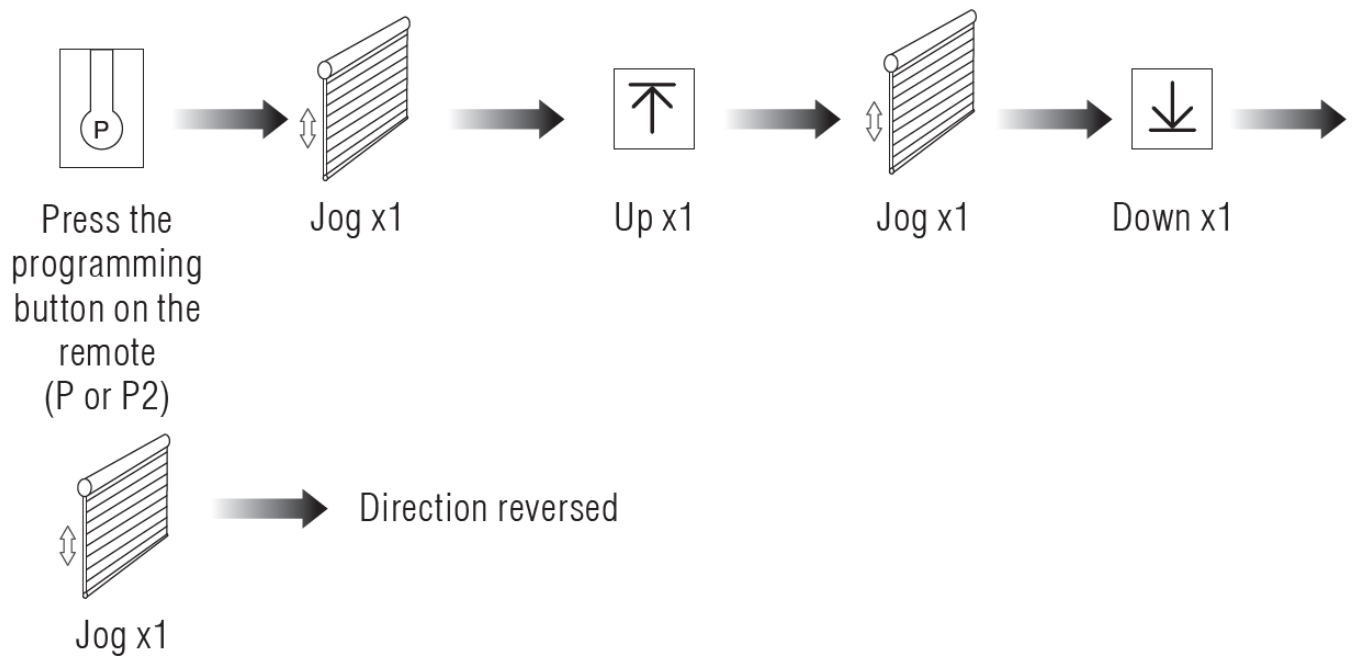
To check direction:



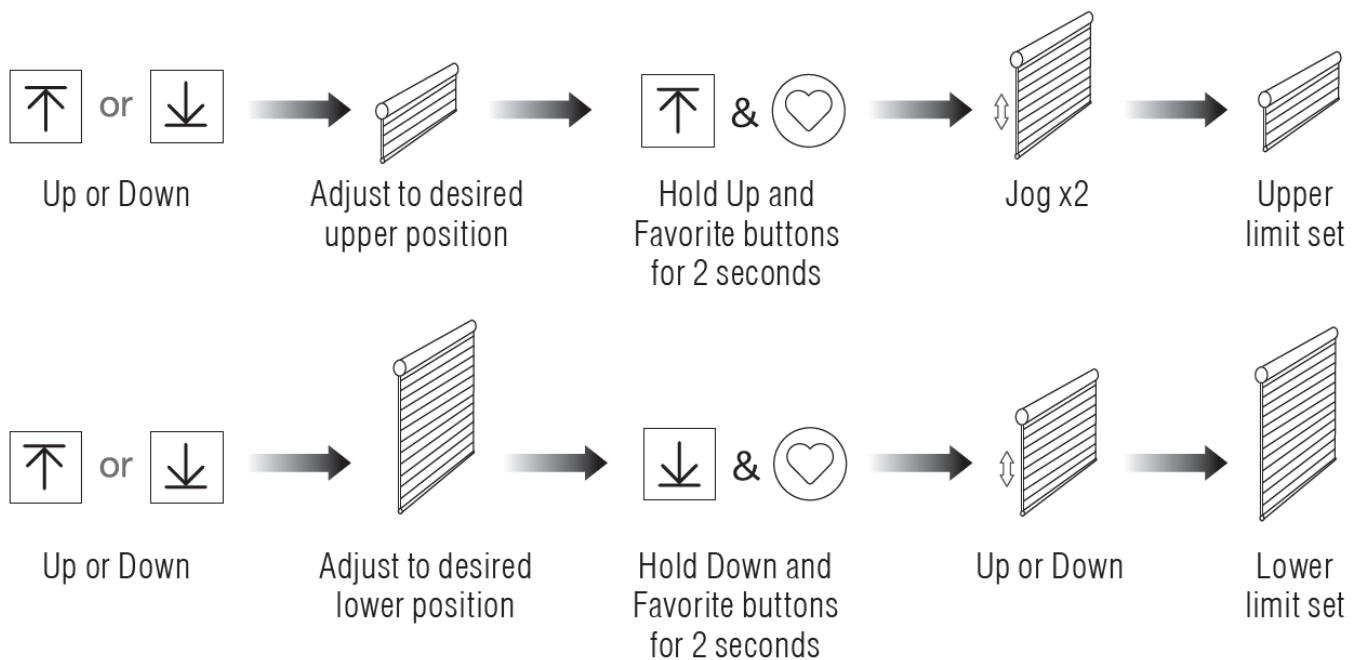
To reverse direction if the limits are not set:



To reverse the direction if the limits are set:



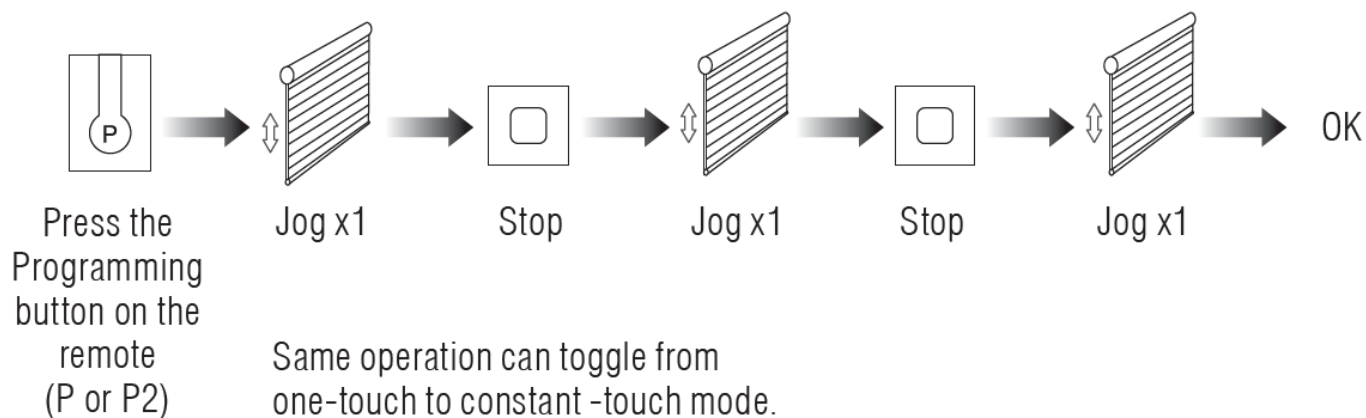
STEP 3: SETTING UPPER & LOWER LIMITS



STEP 4: ONE-TOUCH OR CONTINUOUS-TOUCH MODES

Continuous Touch → One Touch

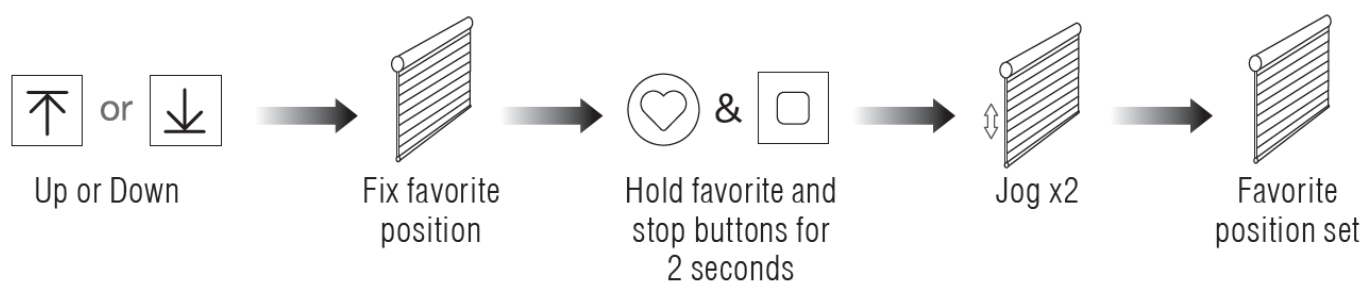
Note: One touch mode allows the user to press the remote button once to make the shade operate. Continuous touch mode will require the button to be held on the remote to operate the shade.



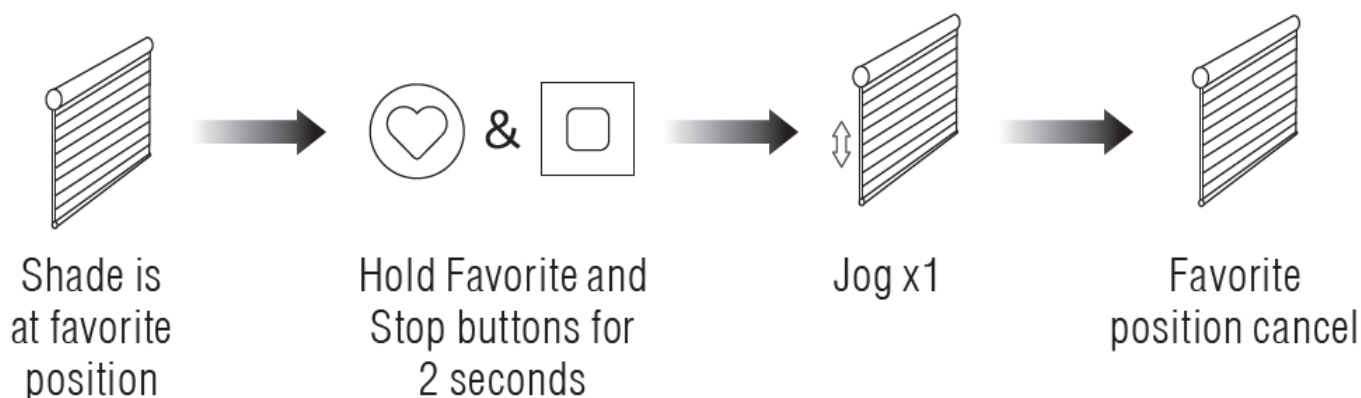
Note: When motor is in one-touch mode, hold Up or Down for more than 2s, it will run in continuous-touch mode.

STEP 5: TO SET A FAVORITE POSITION

To set a favorite position:



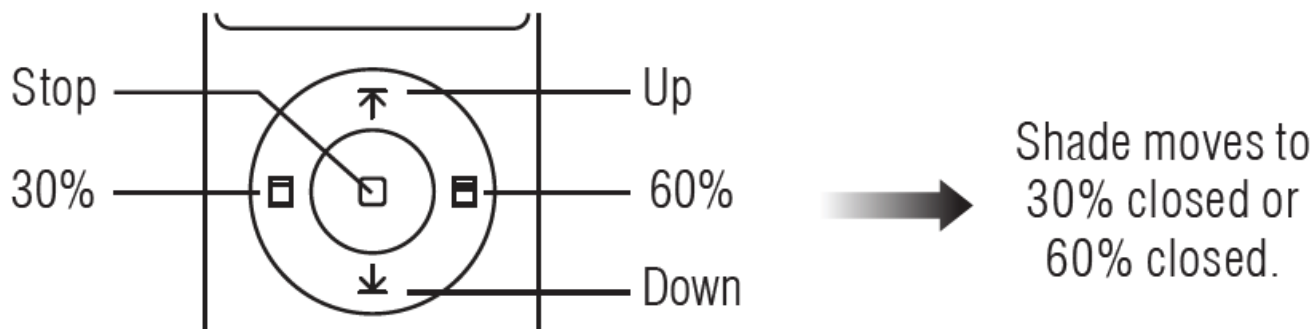
To cancel a favorite position:



Go to favorite position:

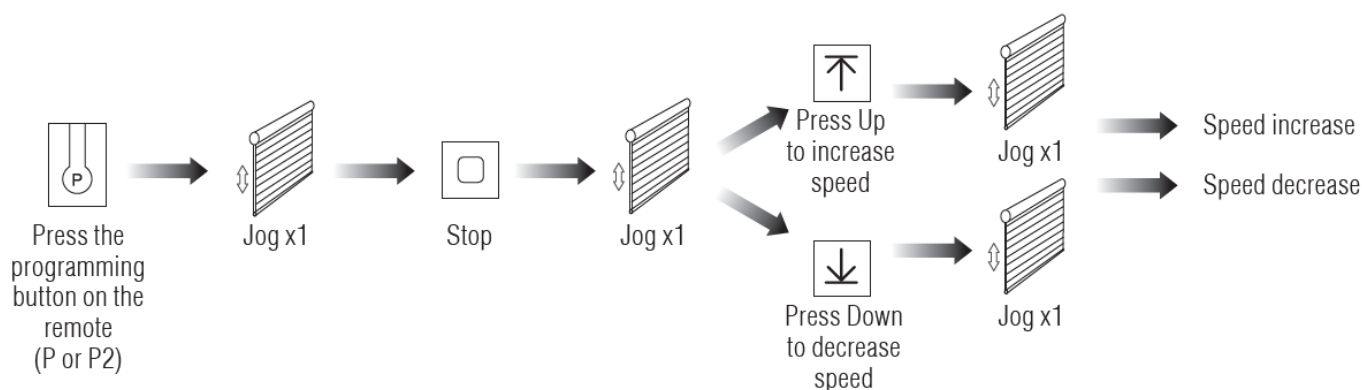


30% and 60% Shade Down Buttons:



Note: 30% and 60% Shade Down Buttons only available on select remotes.

STEP 6: ADJUSTING MOTOR SPEED



Note: If motor doesn't jog, the max/min speed has already been reached. Motor has 3 adjustable speeds.

STEP 7: HIDE UNUSED CHANNELS ON REMOTE

- Refer to the remote instructions for further guidance.

STEP 8: LOCK DOWN SETTINGS

- Refer to the remote instructions for further guidance.

STEP 9: CHARGING THE MOTOR

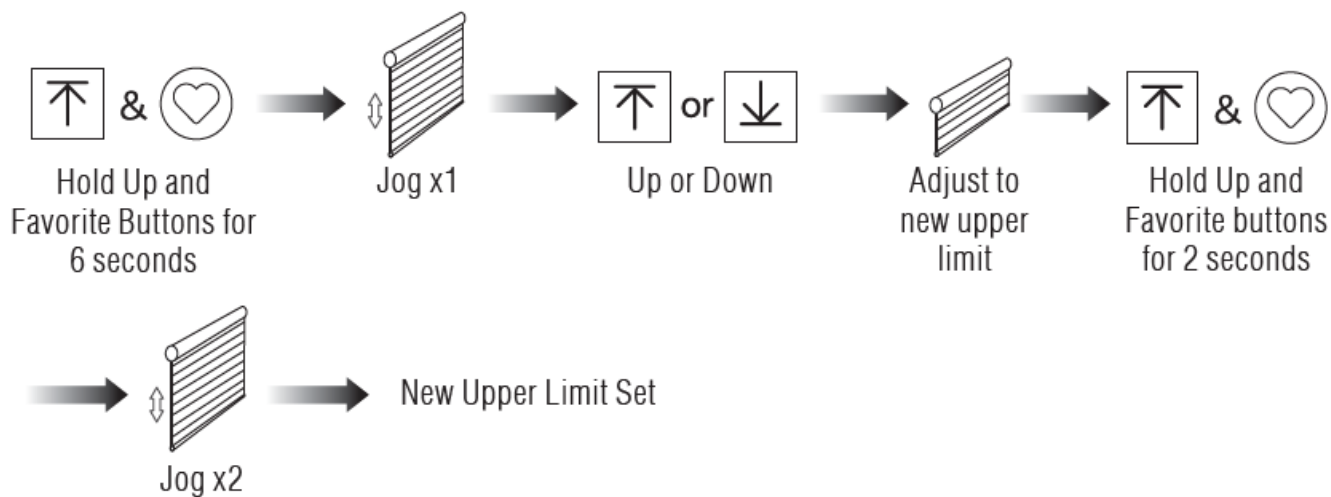
Low Battery Indication and Recharge:

- When the battery voltage is low the LED light will flicker 8 times and give a low-voltage alarm when the motor starts.
- Only use the recommended R-TEC Automation USB-C Charging Cable to charge the motor battery for 6-8 hours.

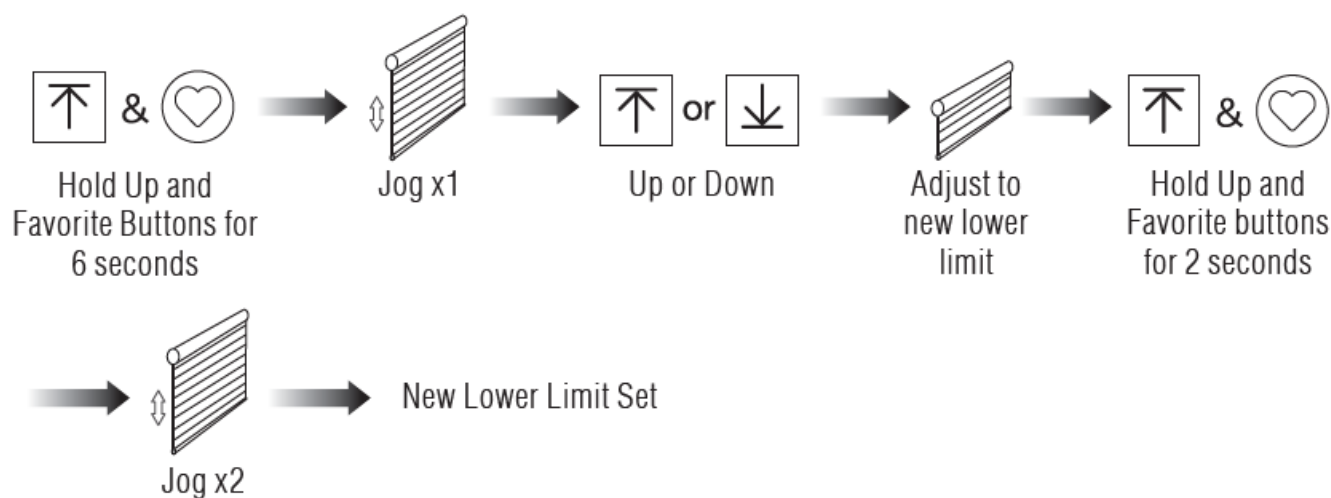
OTHER OPERATIONS

Adjusting Limits

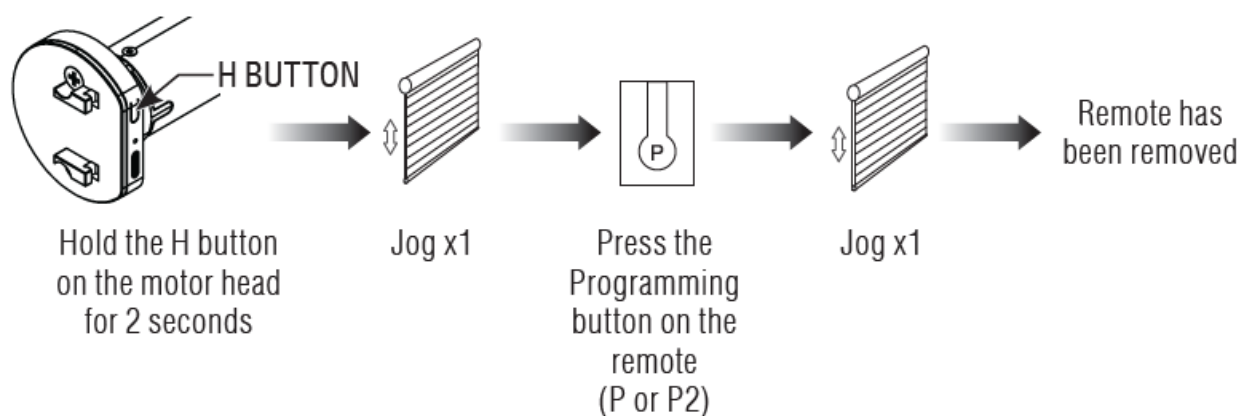
UPPER LIMITS



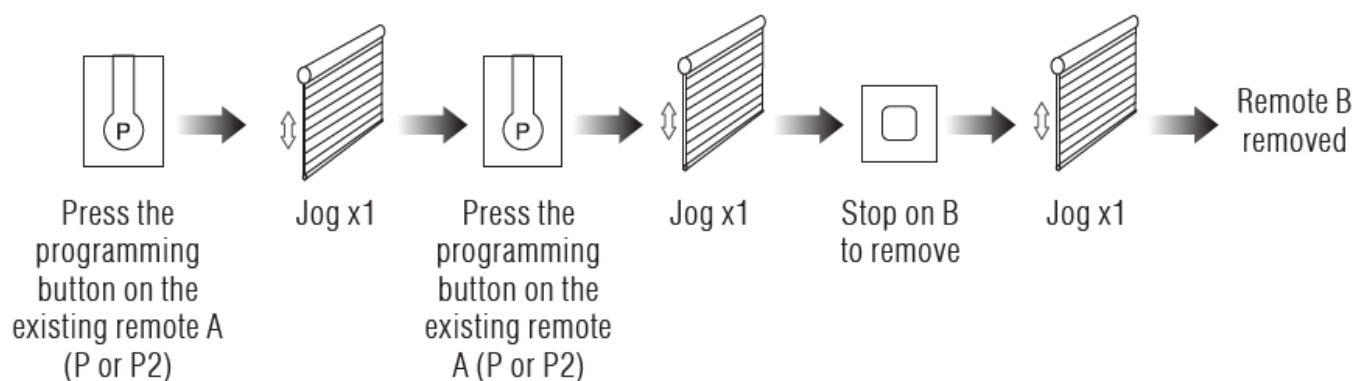
LOWER LIMITS



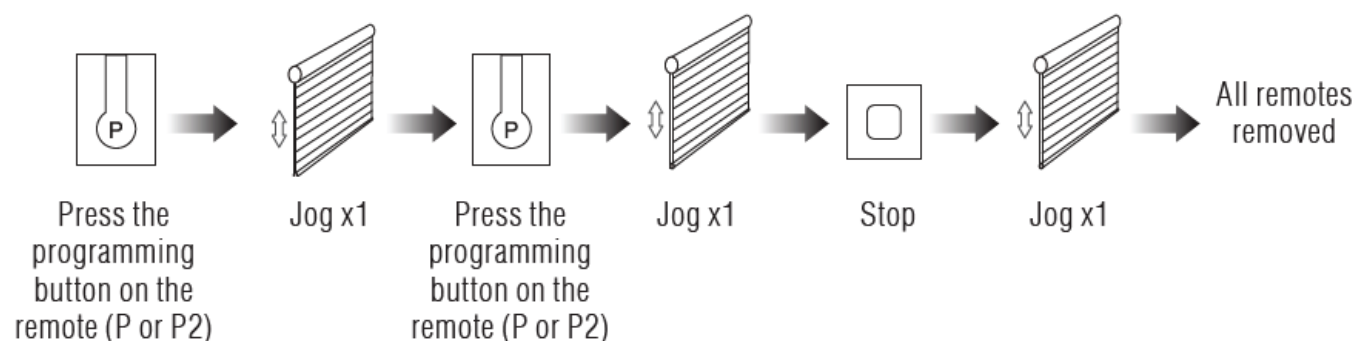
To Remove a Single Remote



Remove a remote by using another paired remote



Remove all remotes



TROUBLESHOOTING

FAULT	CAUSE	SOLUTION
Motor does not work	<ol style="list-style-type: none"> 1. Controller not paired 2. Motor inactive 3. Low battery 	<ol style="list-style-type: none"> 1. Add controller 2. Hold H button for 2 seconds to activate motor 3. Fully charge the motor for 6-8 hours
Motor stops suddenly	<ol style="list-style-type: none"> 1. Upper & Lower limit set incorrectly 2. Shade exceed rated load 3. Low battery 	<ol style="list-style-type: none"> 1. Re-set Upper & Lower limits 2. Contact the shade fabricator 3. Fully charge the motor for 6-8 hours
LED flickers 8 times on motor head when motor starts	Low battery	Fully charge the motor for 6-8 hours

RowleyCompany.com

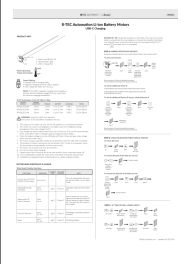
FAQ

- **Q:** Can I use the motor outdoors?
 - **A:** No, this product is designed for indoor use only and should not be used outdoors or in humid

environments.

- **Q:** How many controllers can be paired with the motor?
 - **A:** The motor can be paired with a maximum of 10 controllers for operation.
- **Q:** How do I know when the battery is low?
 - **A:** The LED light on the motor will flicker 8 times when the battery voltage is low and will give a low-voltage alarm when the motor starts.

Documents / Resources

	<p>R-TEC AUTOMATION I-RTEC1 R-TEC Automation Li ion Battery Motors [pdf] Instruction Manual RTA25L2C1WA, RTA25L3C1WA, RTA28L3C1WA, I-RTEC1 R-TEC Automation Li ion Battery Motors, I-RTEC1 R-TEC, Automation Li ion Battery Motors, Li ion Battery Motors, Battery Motors</p>
---	---

References

- [Drapery Workroom & Upholstery Supplies | Rowley](#)
- [User Manual](#)

[Manuals+](#), [Privacy Policy](#)

This website is an independent publication and is neither affiliated with nor endorsed by any of the trademark owners. The "Bluetooth®" word mark and logos are registered trademarks owned by Bluetooth SIG, Inc. The "Wi-Fi®" word mark and logos are registered trademarks owned by the Wi-Fi Alliance. Any use of these marks on this website does not imply any affiliation with or endorsement.