



R M R837017 RFID Based Network Infrastructure Monitoring System Installation Guide

[Home](#) » [R M](#) » R M R837017 RFID Based Network Infrastructure Monitoring System Installation Guide 

Contents

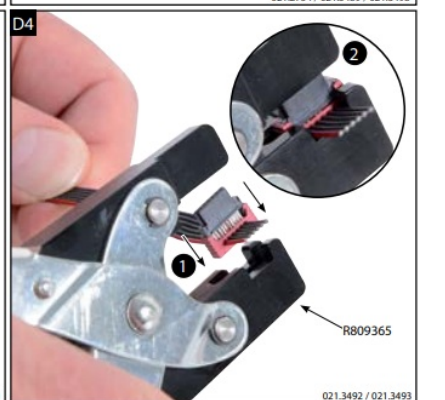
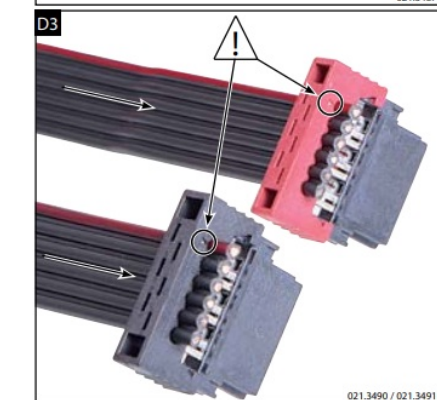
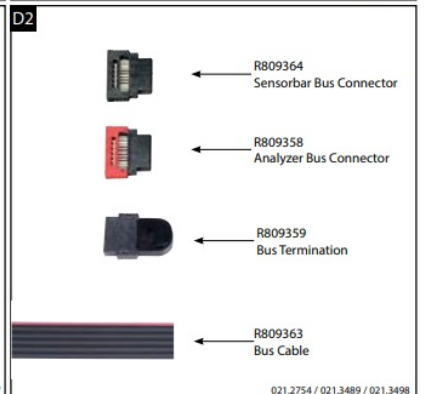
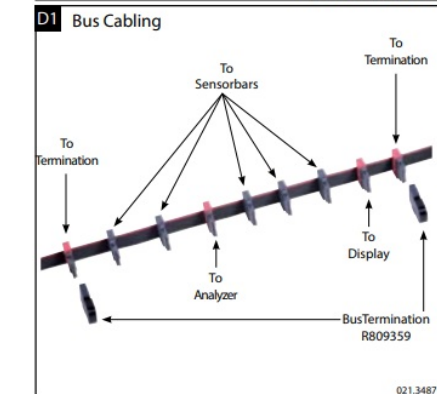
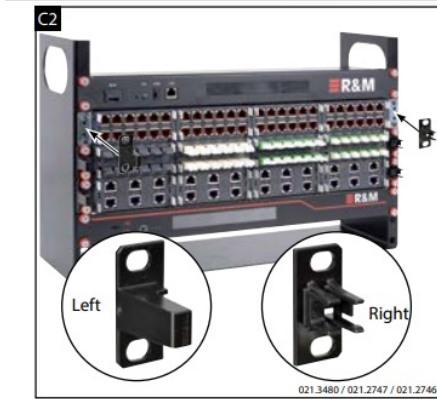
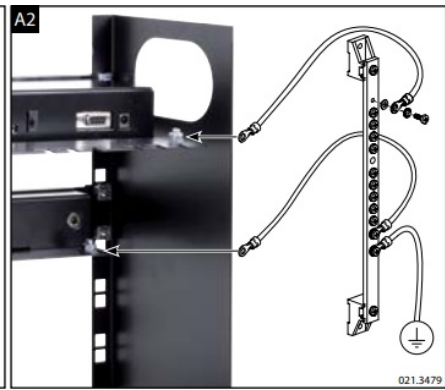
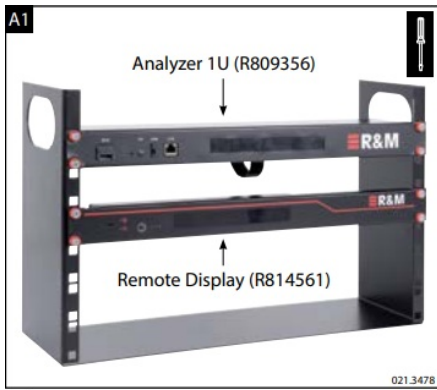
- [1 R M R837017 RFID Based Network Infrastructure Monitoring System](#)
- [2 Installation](#)
- [3 NOTICE for R837017](#)
- [4 Documents / Resources](#)
 - [4.1 References](#)
- [5 Related Posts](#)

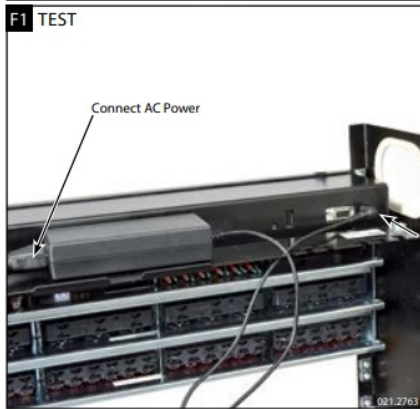
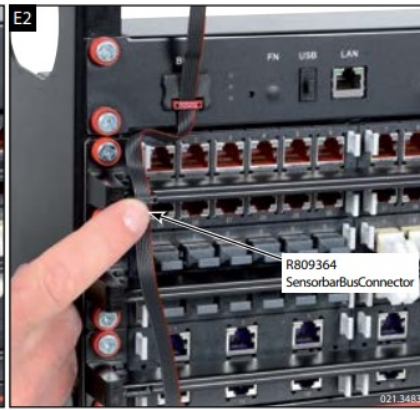
R&M

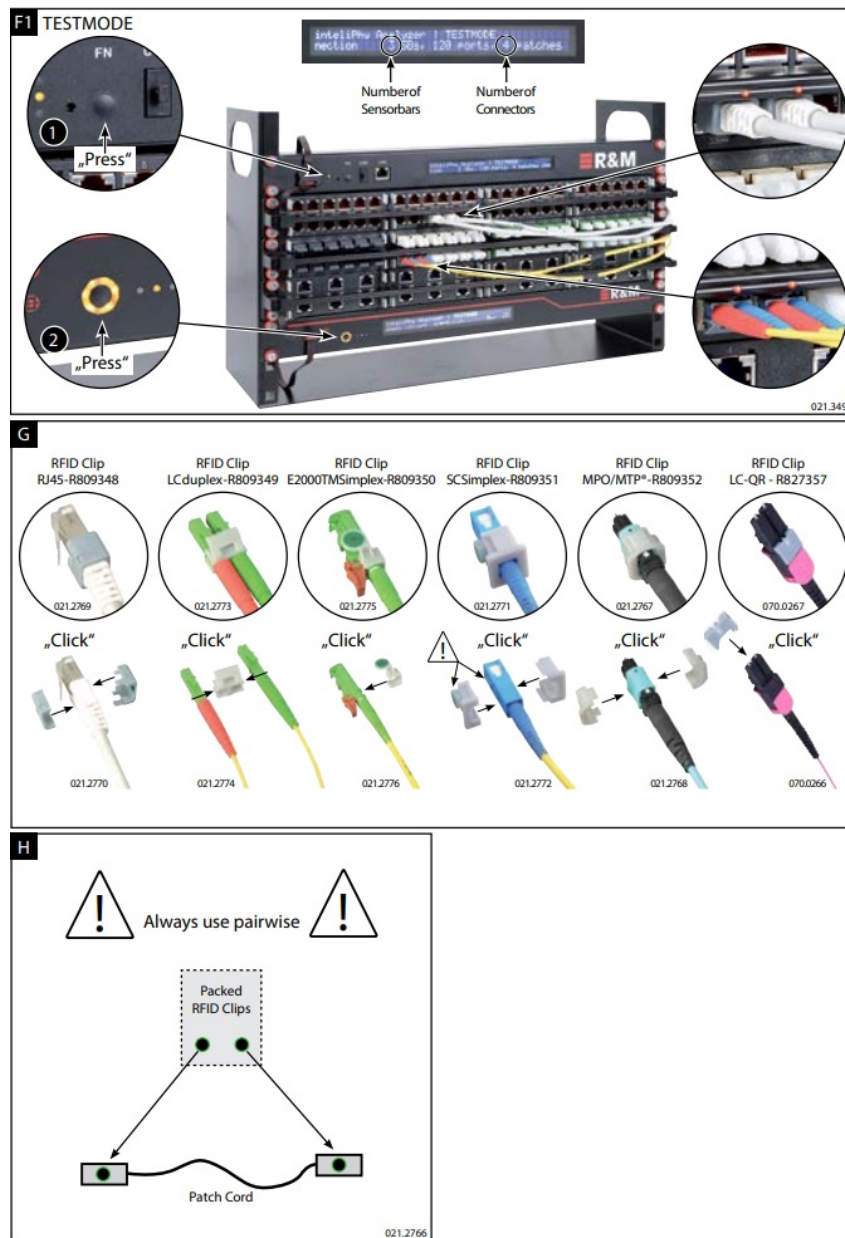
R M R837017 RFID Based Network Infrastructure Monitoring System



Installation







NOTICE for R837017

This device complies with Part 15 of the FCC Rules.
Operation is subject to the following two conditions:

1. this device may not cause harmful interference, and
2. this device must accept any interference received, including interference that may cause undesired operation.

Changes or modifications made to this equipment not expressly approved by Reichle & De-Massari AG may void the FCC authorization to operate this equipment.

This equipment has been tested and found to comply with the limits for a Class B digital device, pursuant to part 15 of the FCC Rules. These limits are designed to provide reasonable protection against harmful interference in a residential installation. This equipment generates, uses and can radiate radio frequency energy and, if not installed and used in accordance with the instructions, may cause harmful interference to radio communications. However, there is no guarantee that interference will not occur in a particular installation. If this equipment does cause harmful interference to radio or television reception, which can be determined by turning the equipment off and on, the user is encouraged to try to correct the interference by one or more of the following measures

- Reorient or relocate the receiving antenna.

- Increase the separation between the equipment and receiver.
- Connect the equipment into an outlet on a circuit different from that to which the receiver is connected.
- Consult the dealer or an experienced radio/TV technician for help.

Headquarters Switzerland

Reichle & De-Massari AG

Binzstrasse 32

CHE-8620 Wetzikon

Telephone HQ

Telefax HQ

+41 44 933 81 11

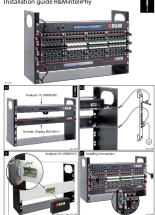
+41 44 930 49 41

E-Mail

hq@rdm.com

www.rdm.com

Documents / Resources

	<p>R M R837017 RFID Based Network Infrastructure Monitoring System [pdf] Installation Guide</p> <p>R837017, 2AVF4R837017, R837017, RFID Based Network Infrastructure Monitoring System, Infrastructure Monitoring System, R837017, Monitoring System</p>
--	--

References

-  [Reichle & De-Massari AG - R&M](#)