

r-go RGOTWBMWLBL Twister Mouse



# r-go RGOTWBMWLBL Twister Mouse Instruction Manual

[Home](#) » [R-Go](#) » r-go RGOTWBMWLBL Twister Mouse Instruction Manual 

## Contents

- 1 r-go RGOTWBMWLBL Twister Mouse
- 2 Product Information
- 3 FAQ
- 4 Introduction
- 5 Product Overview
- 6 Setup
- 7 How to use
- 8 R-Go Break
- 9 Maintenance
- 10 Troubleshooting
- 11 FCC STATEMENT
- 12 Documents / Resources
  - 12.1 References



**r-go RGOTWBMWLBL Twister Mouse**



## Product Information

### Specifications:

- **Product:** R-Go Twister
- **Type:** Ergonomic Mouse
- **Available Sizes:** Small, Medium, Large
- **Connectivity:** Bluetooth & Wired
- **Buttons:** Left & Right
- **Compatibility:** Windows XP/Vista/10/11, MacOS

### Product Overview:

The R-Go Twister is an ergonomic mouse available in small, medium, and large sizes with both Bluetooth and wired connectivity options. It features left and right buttons, a scroll wheel, thumb support, little finger support, an on/off button, a pairing button, a DPI button, a USB-C cable for charging and wired use, and extra pads for small and medium-sized little finger support.

### Setup:

1. Turn on the mouse by clicking one of the buttons.
2. If using Bluetooth, ensure Bluetooth is turned on on your computer.
3. Connect the mouse to your computer via Bluetooth or using the included USB-C cable.

### How to Use:

#### To switch from right-handed to left-handed position:

1. Turn the shell of the mouse clockwise 180 degrees until it clicks.

2. Lift the shell on the side of the thumb support to click the mouse into position.
3. To fold the mouse back into a vertical position, squeeze the thumb support.

**Note:** The mouse cannot be used in a flat position.

#### **DPI Switch:**

Click the DPI button to change the DPI mode. Lower DPI settings are recommended to prevent RSI by moving the mouse with your arm rather than your wrist.

## **FAQ**

### **Common Questions about the R-Go Twister:**

Is there a dongle with the mouse?

Answer: No, there is no dongle with the mouse. The wireless connection works via Bluetooth; simply pair your mouse with your computer once.

Can I use the Twister both wired and wirelessly with Bluetooth?

Answer: Yes, you can use the Twister both wired and wirelessly. A cable is included for wired use, and you only need to connect Bluetooth once for wireless use.

Why doesn't my Twister work in a collapsed position?

Answer: The Twister can only be used in an unfolded vertical mouse position for proper functionality.

## **Introduction**

This vertical mouse is ambidextrous, meaning it is suitable for both left- and right-handed users. Thanks to the patented Switch & System, the Twister can be changed from a left-handed to a right-handed mouse and vice versa with one move. By regularly alternating between your left and right hand, you distribute the load on both hands and prevent annoying complaints such as RSI. In addition, the mouse is foldable, so it is easy to take with you. So you can work ergonomically anywhere.

### **Let's do the twister!**

#### **System requirements/Compatibility:**

Windows XP/Vista/10/11, MacOS

- For more information about this product, scan the QR code! [https://r-go.tools/twister\\_web\\_en](https://r-go.tools/twister_web_en).

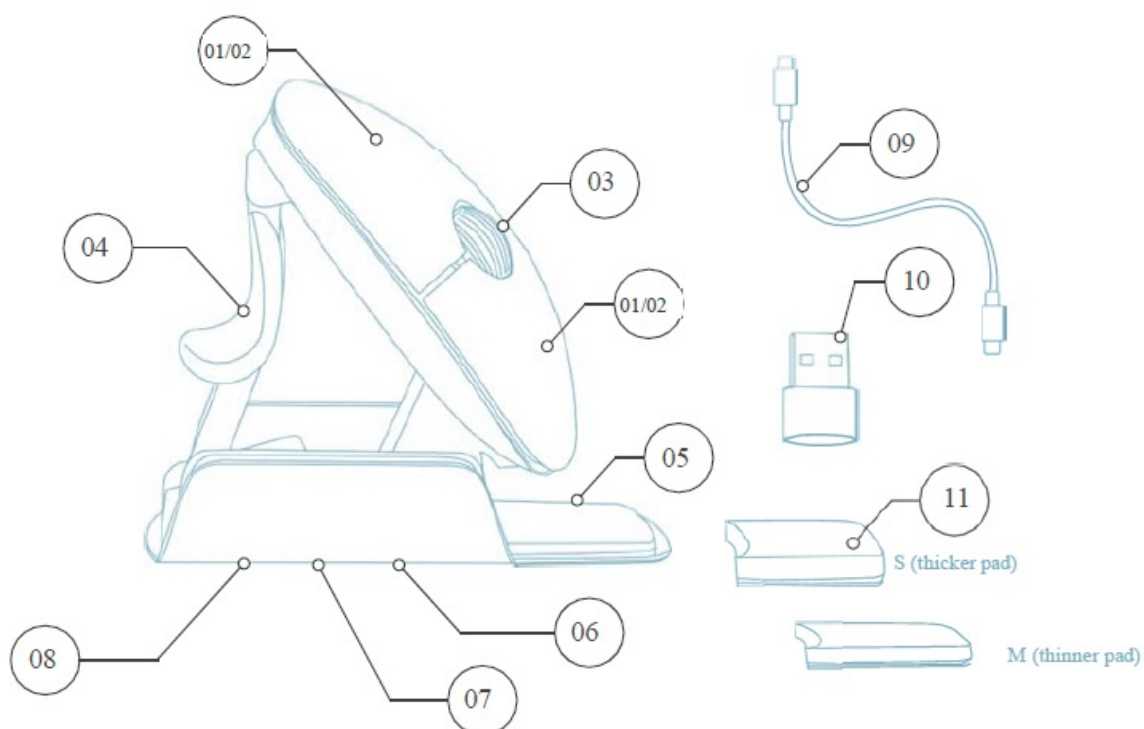


- Watch this video and let's do the twister!



## Product Overview

- **01/02** Left (primary) button / Right (secondary) button\*
- **03** Scroll wheel
- **04** Thumb support
- **05** Little finger support
- **06** On/off button
- **07** Pair button
- **08** DPI button
- **09** USB-C cable (for charging and wired use)
- **10** USB-C to USB-A converter
- **11** Extra pads for Small & Medium size little finger support



Left and right buttons switch automatically when twisting the mouse.

## Setup

### Windows

- Flip the switch 06 on the bottom to “ON”.
- Set the mouse settings in Windows for right-handed.
- Click the Windows icon on your screen or hit the Windows button on your keyboard.

- Type in “Bluetooth and other device settings” and click.
- If Bluetooth is not already working, click on the checkbox to turn Bluetooth on.
- In the window that appears click on “Add Bluetooth or other device”.
- In the new window, click on the option “Bluetooth”.
- Now click the pair button 07 on the bottom of the mouse and click on the new device that appears in the list.
- Your device will now establish a connection with the mouse.
- The next time your device starts up or when you turn the mouse on, just click one of the buttons and the mouse will be connected to your PC.

**Note:**

The mouse buttons work correctly when the mouse settings in Windows are set for right-handed use!

## **Mac Os**

- Flip the switch 06 on the bottom to “ON”.
- Set the mouse settings in macOS to right-handed.
- Click the Apple icon in the top-left corner of the screen and select “System Preferences”.
- In the window that appears click on “Bluetooth”.
- If Bluetooth is not already working, select “Turn Bluetooth on”.
- Now click the pair button 07 on the bottom of the mouse and click on the new device that appears in the list.
- Your device will now establish a connection with the mouse.
- The next time your device starts up or when you turn the mouse on, just click one of the buttons and the mouse will be connected to your PC.

**Note:**

The mouse buttons work correctly when the mouse settings in macOS are set for right-handed use!

## **DPI switch**

To change the DPI mode, click the DPI button 08.

DPI means Dots Per Inch. With a low DPI, you will have to make larger movements to get the cursor to move the same distance on your screen compared to a higher DPI. We recommend a lower DPI setting, so you will move the mouse with your arm instead of your wrist to prevent RSI.

## **There is no dongle with my mouse. Is that correct?**

Yes, that is correct. Our wireless products work via Bluetooth. You only need to pair your mouse and your computer once.

## **How do I pair my mouse with my computer?**

- From the Windows menu, go to ‘Settings’ and click on ‘Devices’.
- Switch Bluetooth to ‘on’.
- Ensure that your new device is sufficiently charged.
- Press and hold the sync button on the bottom of the device until the blue light blinks.
- Select the mouse from the displayed row on the computer screen to connect it to the computer

## **Can I use my Twister both wired and wireless with Bluetooth?**

Yes. A cable is included, which you easily plug into your mouse and connect to your computer. The Twister can be used alternately with or without a cable without any problems. For wireless use, you only have to connect Bluetooth once: you don't have to do this every time you use the mouse with a cable.

### **My Twister does not work in the collapsed position. Is that correct?**

Yes, that is correct. The Twister can only be used in as vertical mouse unfolded position.

## **How to use**

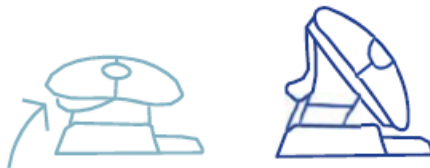
### **• Step A**

To switch from a right-handed position to a left-handed position, turn the shell clockwise 180 degrees until it clicks.



### **• Step B**

By lifting the shell on the side of the thumb support, the mouse will click into position. Your mouse is ready for use!



### **• Step C**

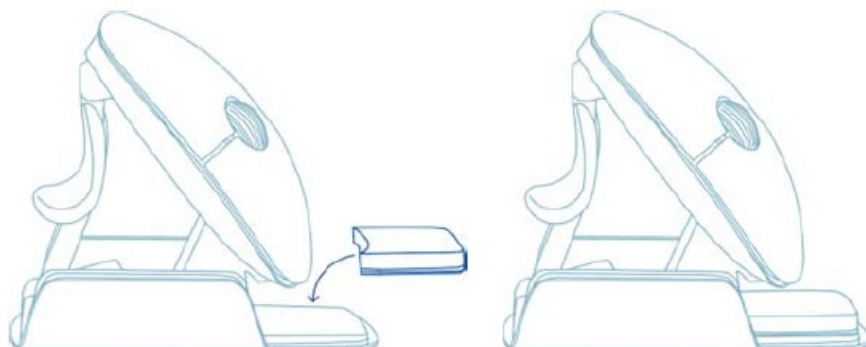
Squeeze the thumb support of the mouse, to fold the mouse back into a flat position.



**Note:** The mouse does not work in a flat position!

### **• Step D (optional)**

To turn the mouse into a Medium\* or Small\*\* size to support your hand and prevent it from sliding down, choose one of the extra pads 11 and stick it once on the little finger support 05. Your mouse is ready for use!



- Stick the thicker pad onto the little finger support for Small hand size.
- Stick the thinner pad onto the little finger support for Medium hand size.

## R-Go Break

Download the R-Go Break software at [www.r-go-break.com](http://www.r-go-break.com). The R-Go Break software is compatible with the R-Go Twister mouse and all R-Go HE Break mice and keyboards.

The R-Go Break is a software tool that helps you to remember to take breaks from your work. As you work, the R-Go Break software controls the LED light on your Break mouse or keyboard. This break indicator changes colour, like a traffic light. When the light turns green, it means you are working healthily. Orange indicates that it is time for a short break and red indicates that you have been working too long. This way you receive feedback on your break behavior positively.

**For more information about the R-Go Break software, scan the QR code!**

[https://r-go.tools/break\\_web\\_en](https://r-go.tools/break_web_en).



## Maintenance

- Do not bring the mouse in contact with water. Water could damage the electronic parts inside the mouse. To clean the mouse, disconnect the device from your PC. Do not clean the mouse with alcohol or with water and soap. This will damage the coating of the mouse. If you want to clean the mouse, use a water-based damp cloth.
- Do not remove any of the rubber parts on the bottom of the mouse. You will not be able to place them back and your mouse will not move smoothly as before.
- Do not obstruct the laser on the bottom of the mouse.
- Do not turn the mouse anti-clockwise. This will damage the mechanism.
- Transport the mouse in the folded position, using the included bag to avoid damage.

## Troubleshooting

Is your mouse not working properly, or do you experience problems while using it? Please follow the steps mentioned below.

- Check if the mouse is connected properly.
- Note that the mouse buttons work correctly when the mouse settings in Windows are set for right-handed use
- Click the 'Pair' button on the bottom of the mouse to start the pairing process. Check if the device appears on the screen. If it does not appear, restart your computer.
- Test the mouse on another device, if it is still not working contact us via [info@r-go-tools.com](mailto:info@r-go-tools.com).

## FCC STATEMENT

### RF exposure statement

This equipment complies with the FCC and ISED radiation exposure limits set forth for an uncontrolled

environment. This transmitter must not be co-located or operating in conjunction with any other antenna or transmitter.

### FCC Warning

This device complies with Part 15 of the FCC Rules. Operation is subject to the following two conditions:

1. This device may not cause harmful interference, and
2. This device must accept any interference received, including interference that may cause undesired operation.

### Note:

This equipment has been tested and found to comply with the limits for a Class B digital device, under part 15 of the FCC Rules. These limits are designed to provide reasonable protection against harmful interference in a residential installation. This equipment generates, uses and can radiate radio frequency energy and, if not installed and used under the instructions, may cause harmful interference to radio communications. However, there is no guarantee that interference will not occur in a particular installation. If this equipment does cause harmful interference to radio or television reception, which can be determined by turning the equipment off and on, the user is encouraged to try to correct the interference by one or more of the following measures:

- Reorient or relocate the receiving antenna.
- Increase the separation between the equipment and the receiver.
- Connect the equipment to an outlet on a circuit different from that to which the receiver is connected.
- Consult the dealer or an experienced radio/TV technician for help.

### NOTE 2:


Any changes or modifications to this unit not expressly approved by the party responsible for compliance could void the user's authority to operate the equipment.

### IC WARNING

This device contains licence-exempt transmitter(s) that comply with Innovation, Science and Economic Development Canada's licence-exempt RSS(s). Operation is subject to the following two conditions:

1. This device may not cause interference.
2. This device must accept any interference, including interference that may cause undesired operation of the device.


### Documents / Resources

	<a href="#">r-go RGOTWBMWLBL Twister Mouse</a> [pdf] Instruction Manual RGOTWBMWLBL Twister Mouse, RGOTWBMWLBL, Twister Mouse, Mouse
---	---

### References

- [Buy and Sell Domain Names | Dan.com](#)
- [Tools.com – tools.com International LLC](#)



-  [Break software - R-Go Tools](#)
- [User Manual](#)

[Manuals+](#), [Privacy Policy](#)

This website is an independent publication and is neither affiliated with nor endorsed by any of the trademark owners. The "Bluetooth®" word mark and logos are registered trademarks owned by Bluetooth SIG, Inc. The "Wi-Fi®" word mark and logos are registered trademarks owned by the Wi-Fi Alliance. Any use of these marks on this website does not imply any affiliation with or endorsement.