



r-go Ergonomic Keyboard Split Break Instruction Manual

[Home](#) » [R-Go](#) » r-go Ergonomic Keyboard Split Break Instruction Manual 

r-go Ergonomic Keyboard Split Break Instruction Manual



Contents

- [1 Congratulations with your purchase!](#)
- [2 Product overview](#)
- [3 Setup Wired](#)
- [4 Setup Wireless](#)
- [5 Function keys](#)
- [6 R-Go Break](#)
- [7 Troubleshooting](#)
- [8 Documents / Resources](#)
 - [8.1 References](#)

Congratulations with your purchase!

Our ergonomic R-Go Split Break keyboard offers all the ergonomic features you need to type in a healthy way. The two keyboard parts can be placed in any desired position and gives you maximum freedom. This unique design ensures a natural and relaxed position of the shoulders, elbows, and wrists. Thanks to the light keystroke, minimal muscle tension is needed while typing. Its thin design ensures a relaxed, flat position of hands and wrists

while typing. The R-Go Split Break keyboard also has an integrated break indicator, which indicates with color signals when it is time to take a break. Green means you are working healthy, orange means it is time to take a break and red means you have been working too long. #stayfit

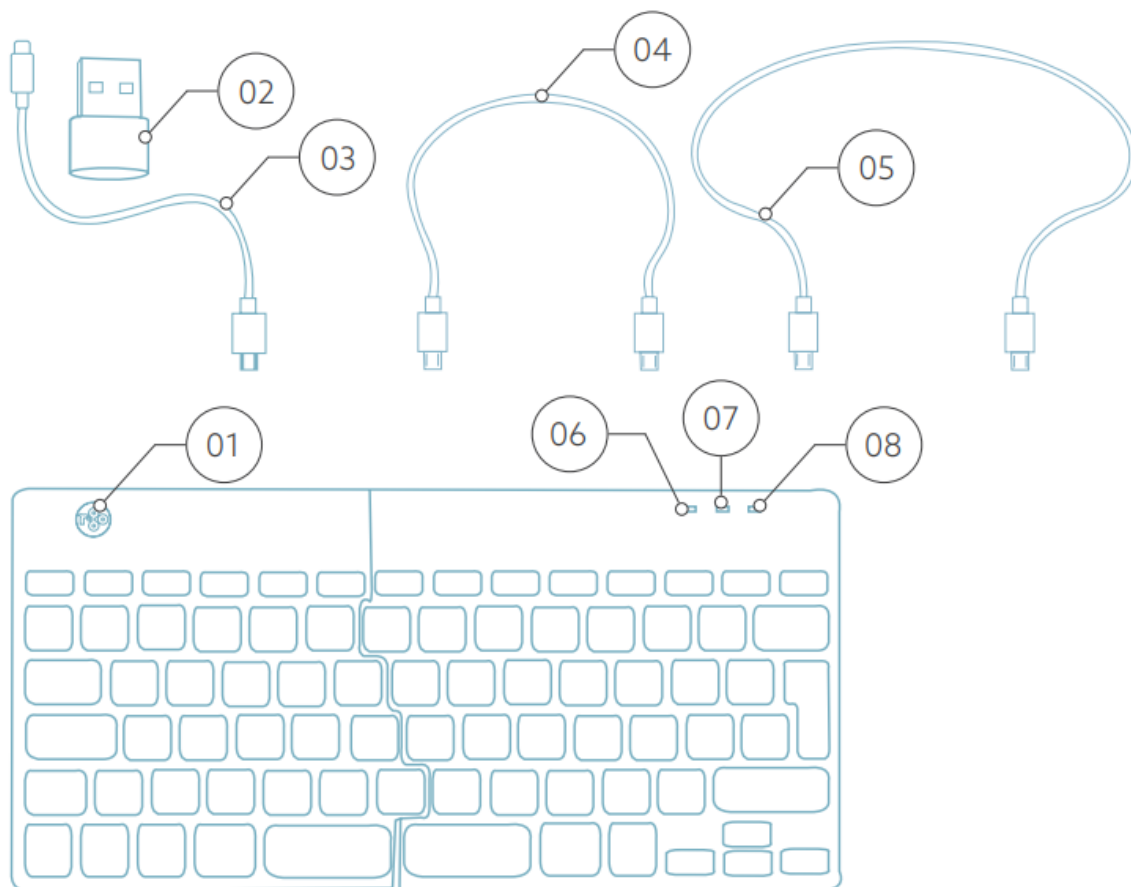
System requirements/Compatibility: Windows XP/ Vista/10/11

For more information about this product, scan the QR code!



https://r-go.tools/splitbreak_web_en

Product overview

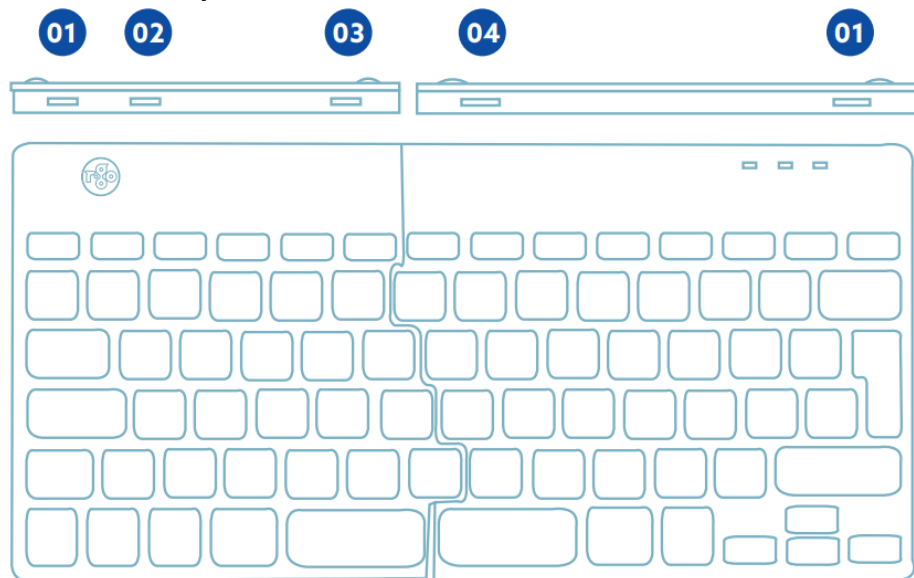


1. R-Go Break indicator
2. USB-C to USB-A converter

3. Cable to connect keyboard to PC (USB-C)
4. Cable (31,5 cm) to connect the two parts
5. Cable (51,5 cm) to connect the two parts
6. Num Lock indicator
7. Caps Lock indicator
8. Scroll Lock indicator

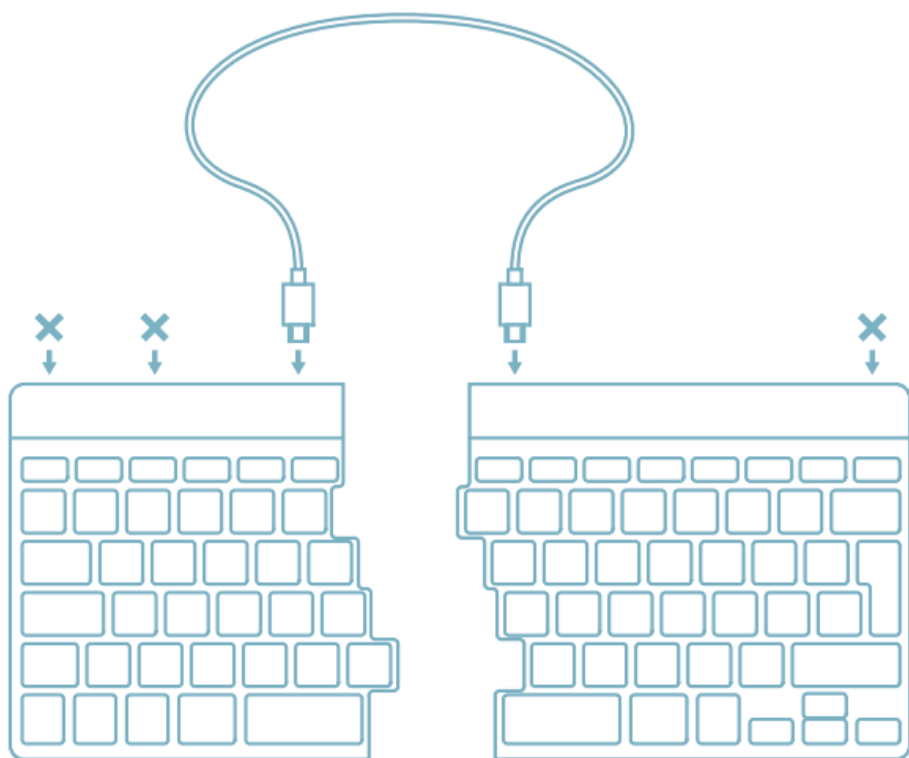
Setup Wired

Overview USB-ports

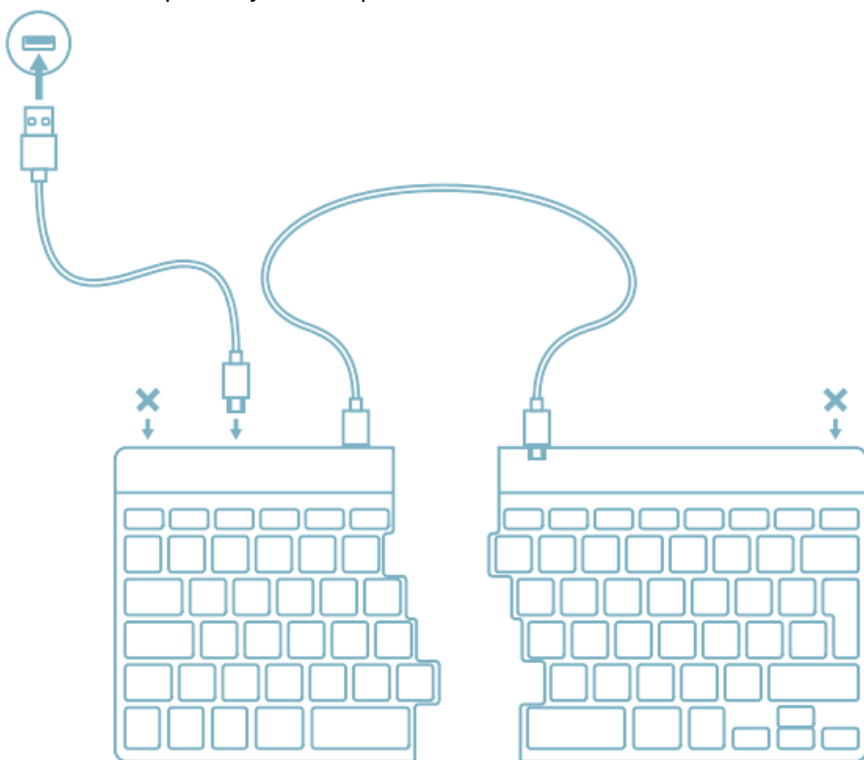


1. Hub – other devices (not to computer)
2. Connect to computer
3. Connect between two keyboard parts

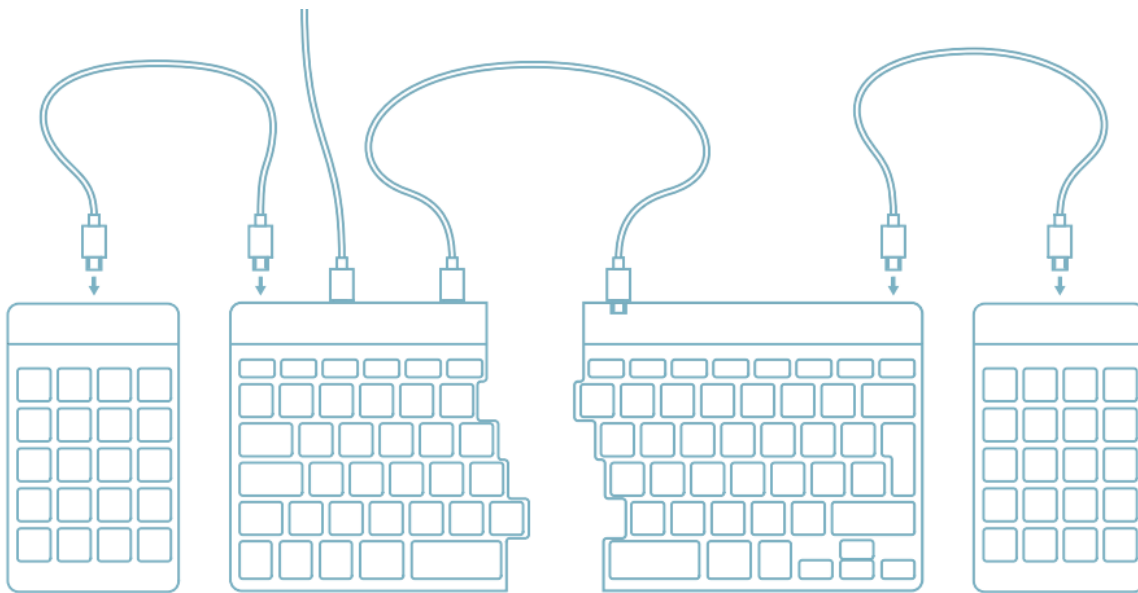
A Connect the two parts by plugging cable **02** or **03** into port **03** and **04** .



B Connect the keyboard to your computer by plugging the USB-C end of cable **01** into port **02** and the other end into the USB-port of your computer.

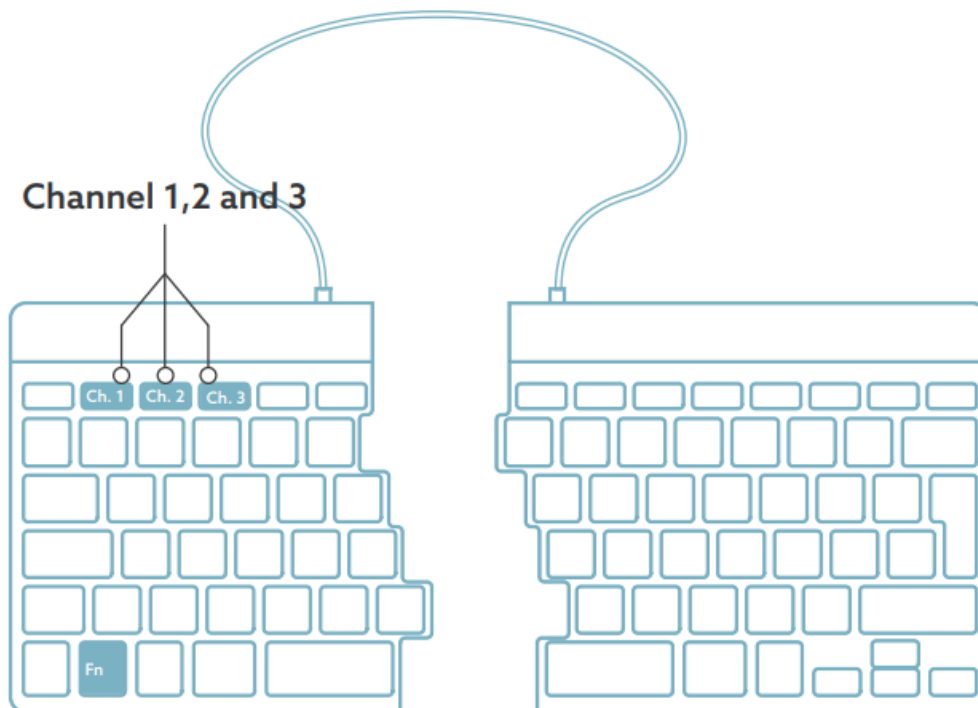


C (Optional) Connect Numpad or another device to the keyboard by plugging them into port **01** .



Setup Wireless

A Turn the keyboard on. At the back of the keyboard you will find the on/off switch.



B To connect the keyboard you can choose channel 1, 2 or 3. If you press once the chosen channel, you can change devices. Press and hold the Fn-key and press the key of your chosen channel. It will search for a device to connect with. Hold until the light indicator on the upper right side turns on.

C Open “Settings” on the device. Set up the connection.

D To charge the keyboard, connect the keyboard to your computer using cable 01 .

There is no dongle with my keyboard. Is that correct?

Yes, that is correct. Our wireless products work via Bluetooth. You only need to pair your keyboard and your computer once.

How do I pair my wireless Bluetooth keyboard with my computer?

- From the Windows menu, go to ‘Settings’ and click on ‘Devices’.
- Switch Bluetooth to ‘on’.

- Ensure that your new device is sufficiently charged.
- Press and hold the sync button on the bottom of the device until the blue light blinks.
- Select the device from the displayed row on the computer screen to connect it to the computer.

Function keys

The function keys are marked on the keyboard in blue. To activate a function on the left side of your keyboard, press the Fn-key at the same time as the selected function key. Only activates function keys on the left side of the keyboard.

To use the Numpad integrated in the right side of the keyboard (printed on the keyboard in light blue) activate Num Lock. To use normal keys again, deactivate Num Lock. Only activates the integrated Numpad on the right side of the keyboard.

Note: Fn + A = Break indicator light On/Off

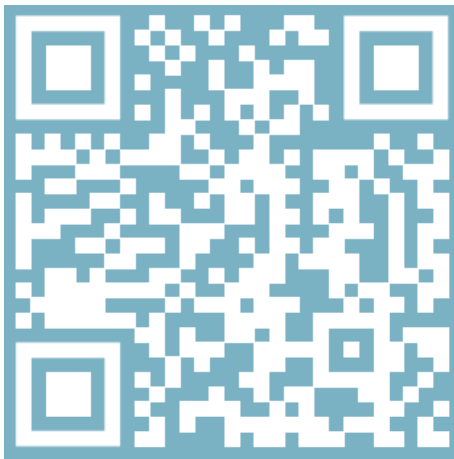
R-Go Break

Download the R-Go Break software at <https://r-go.tools/bs>

The R-Go Break software is compatible with all R-Go Break keyboards. It gives you insight into your work behaviour and gives you the possibility to customize your keyboard buttons.

The R-Go Break is a software tool that helps you to remember to take breaks from your work. As you work, the R-Go Break software controls the LED light on your Break mouse or keyboard. This break indicator changes color, like a traffic light. When the light turns green, it means you are working healthily. Orange indicates that it is time for a short break and red indicates that you have been working too long. This way you receive feedback on your break behavior in a positive way.

For more information about the R-Go Break software, scan the QR code!



https://r-go.tools/break_web_en

Troubleshooting

Is your keyboard not working properly, or do you experience problems while using it? Please follow the steps mentioned below.

- Check if the keyboard is connected using the correct connectors and cables (page 5-6).
- Connect the keyboard to another USB port of your computer.

- Connect the keyboard directly to your computer if you are using an USB hub.
- Restart your computer.
- Test the keyboard on another device, if it is still not working contact us via info@r-go-tools.com.



Documents / Resources



[r-go Ergonomic Keyboard Split Break](#) [pdf] Instruction Manual
Ergonomic Keyboard Split Break, Keyboard Split Break, Split Break, Break

References

- [R-Go Break Software - R-Go Tools](#)
- [Pauzesoftware - R-Go Tools](#)
- [R-Go Split Break - R-Go Tools](#)
- [R-Go Split Break - R-Go Tools](#)
- [R-Go Split Break - R-Go Tools](#)
- [R-Go Split Break - R-Go Tools](#)
- [User Manual](#)

[Manuals+](#), [Privacy Policy](#)

This website is an independent publication and is neither affiliated with nor endorsed by any of the trademark owners. The "Bluetooth®" word mark and logos are registered trademarks owned by Bluetooth SIG, Inc. The "Wi-Fi®" word mark and logos are registered trademarks owned by the Wi-Fi Alliance. Any use of these marks on this website does not imply any affiliation with or endorsement.