



**CG0030BK Chain Guard**



## R and G CG0030BK Chain Guard Installation Guide

[Home](#) » [R AND G](#) » R and G CG0030BK Chain Guard Installation Guide 

### Contents

- [1 R and G CG0030BK Chain Guard](#)
- [2 LEGEND](#)
- [3 FITTING PICTURES](#)
- [4 FITTING INSTRUCTIONS](#)
- [5 Product Specifications](#)
- [6 Frequently Asked Questions](#)
- [7 Documents / Resources](#)
  - [7.1 References](#)
- [8 Related Posts](#)



**R and G CG0030BK Chain Guard**



THIS KIT CONTAINS THE ITEMS PICTURED AND LABELLED OVER PAGE. SOME PARTS MAY BE SHOWN FOR CLARITY OF INSTRUCTIONS ONLY. DO NOT PROCEED UNTIL YOU ARE SURE ALL PARTS ARE PRESENT. PLEASE READ ALL INSTRUCTIONS BEFORE PROCEEDING. IF IN ANY DOUBT WHEN FITTING OUR PRODUCTS, CONSULT ONE OF OUR DEALERS OR HAVE FITTED BY A QUALIFIED TECHNICIAN. PLEASE NOTE THAT THE WAY THE KIT IS PACKED DOES NOT NECESSARILY REPRESENT THE WAY OF MOUNTING THE BIKE. IN THE EVENT OF RUBBER WASHERS BEING USED TO HOLD COMPONENTS ONTO BOLTS, THESE RUBBER WASHERS CAN BE THROWN AWAY.

### **TOOLS REQUIRED**

- 3mm, 4mm & 5mm A/F ALLEN TOOLS
- 8-12MM SPANNER
- TORX SET

### **GENERAL TORQUE SETTINGS**

- M4 BOLT = 8Nm
- M5 BOLT = 12Nm
- M6 BOLT = 15Nm
- M8 BOLT = 20Nm
- M10 BOLT = 40Nm
- M12 BOLT = 40Nm

### **LEGEND**

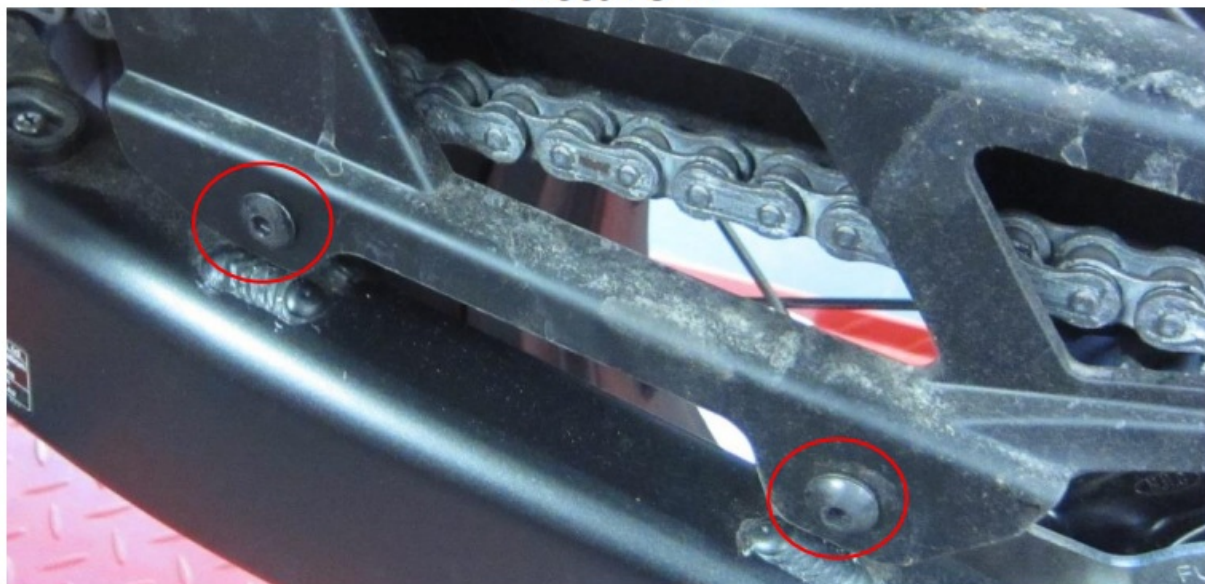
ITEM NO	DESCRIPTION	QTY
ITEM 1	3mm ALUMINIUM CHAIN GUARD	1
ITEM 2	20mm BUTTON HEAD BOLT	1
ITEM 3	16mm BUTTON HEAD BOLT	2
ITEM 4	WASHER	3

## FITTING PICTURES

Picture 1



Picture 2



## FITTING INSTRUCTIONS

1. Remove the plastic OEM chain guard by removing the three bolts & nut shown in Picture 1 & 2.
2. Using the two supplied 16mm bolts with washers, thread them through the chain guard in the front two positions and into the mounting lugs on the swingarm one by one. It is recommended to use a thread-locking compound at this stage.
3. Then using the remaining 20mm bolt and washer, insert it into the rearward position and thread through the

mounting lug and into the OEM nut.

4. Tighten all three to the correct torque settings using the OEM torque settings for the bolts used.

**Please note:** Remember to check the torque setting when performing routine maintenance (cleaning/servicing chain). ISSUE 1 – 04/01/2024 TB

## **NOTICE**

The catalog description and any exhibition of samples are only broad indications of the Products and R&G may make design changes that do not diminish their performance or visual appeal and supplying them in such a state shall conform to the order. The Buyer acknowledges no representation or warranty (other than as to title) has been given or will apply to the Products other than those in R&G's order or confirmation and the Buyer confirms it has chosen the Products as being of merchantable quality and suitable for its particular purposes. Where R&G fits the Products or undertakes other services it shall exercise reasonable skill and care and rectify any fault free of charge unless the workmanship has been disturbed. The Buyer is responsible for ensuring that the warranty on the motorcycle is not affected by the fitting of the Products. On return of any defective Products R&G shall at its option either supply a replacement or refund the purchase money but shall not be liable if the Products have been modified or used or maintained otherwise than in accordance with R&G's or manufacturer's instructions and good engineering practice or if the defect arises from accident or neglect. Other than identified above and subject to R&G not limiting its liability for causing death and personal injury, it shall not be liable for indirect or consequential loss and otherwise its liability shall be limited to the amounts paid by the Buyer for the Products or the fitting or service concerned. These terms do not affect the Buyer's statutory rights.

## **R&G RACING RETURNS POLICY (NON-FAULTY GOODS)**

Returns must be pre-authorised (if not pre-authorised the return will be rejected). Goods may only be returned directly to us if they were purchased directly from us (customer must prove if necessary). Otherwise to be returned to the original vendor. Goods must be in re-sellable condition, in the opinion of R&G Racing. All returns are subject to a 25% restocking and handling fee (25% of the gross value exc. P&P – at the prevailing price at the time of purchase). The customer must pay any and all carriage charges. No returns of discontinued products, unless within 14 days of purchase. This policy does not affect your statutory rights and does not refer to faulty goods.

## **R&G Racing**

Unit 1, Shelley's Lane, East Worldham, Alton, Hampshire, GU34 3AQ Tel: +44 (0)1420 89007 Fax: +44 (0)1420 87301 [www.rg-racing.com](http://www.rg-racing.com) Email: [info@rg-racing.com](mailto:info@rg-racing.com)

## **Product Specifications**

- **Item 1:** 3mm Aluminium Chain Guard
- **Item 2:** 20mm Button Head Bolt
- **Item 3:** 16mm Button Head Bolt
- **Item 4:** Washer

## **Frequently Asked Questions**

### **Q: Can I use different bolts than the ones provided in the kit?**

A: It is recommended to use the specified bolts to ensure proper fitting and safety. Using different bolts may not provide the intended level of security.


### **Q: Do I need any special tools to install the chain guard?**

A: Basic tools like wrenches or sockets for the specified bolt sizes are required. Additionally, a thread-locking compound is recommended for installation.

### **Q: How often should I check the torque settings after installation?**

A: It is recommended to check the torque settings periodically, especially during routine maintenance like cleaning or servicing the chain. This helps ensure that the chain guard remains securely attached.

## Documents / Resources

	<a href="#">R and G CG0030BK Chain Guard [pdf] Installation Guide</a> CG0030BK Chain Guard, CG0030BK, Chain Guard, Guard
---	---

## References

- [R RACING.COM - YOUR RACING CONNECTION](#)
- [Welcome to R&G | Setting the standard in bolt-on motorcycle accessories and Crash Protectors](#)
- [Welcome to R&G | Setting the standard in bolt-on motorcycle accessories and Crash Protectors](#)
- [User Manual](#)

### Manuals+, Privacy Policy

This website is an independent publication and is neither affiliated with nor endorsed by any of the trademark owners. The "Bluetooth®" word mark and logos are registered trademarks owned by Bluetooth SIG, Inc. The "Wi-Fi®" word mark and logos are registered trademarks owned by the Wi-Fi Alliance. Any use of these marks on this website does not imply any affiliation with or endorsement.