



CG0029BK Chain Guard



R AND G CG0029BK Chain Guard Installation Guide

[Home](#) » [R AND G](#) » R AND G CG0029BK Chain Guard Installation Guide 

Contents

- [1 R AND G CG0029BK Chain Guard](#)
- [2 Product Information](#)
- [3 Product Usage Instructions](#)
- [4 FAQs](#)
- [5 TOOLS REQUIRED](#)
- [6 LEGEND](#)
- [7 FITTING PICTURES](#)
- [8 CONSUMER NOTICE](#)
- [9 Documents / Resources](#)
 - [9.1 References](#)



R AND G CG0029BK Chain Guard



Product Information

Specifications:

- Item: CG0029BK Chain Guard
- Material: 3mm Aluminum
- Quantity: 1

Product Usage Instructions

Fitting Instructions:

1. Remove the plastic OEM chain guard by removing the three bolts shown in Picture 1 & 2.
2. Using the three OEM bolts (in the same positions they were removed from), thread them through the chain guard and into the mounting lugs on the swingarm one by one. It is recommended to use a thread locking compound at this stage.
3. Tighten all three to the correct torque settings using the OEM torque settings for the bolts used.

Please note: Remember to check the torque setting when performing routine maintenance (cleaning/servicing chain).

FAQs

- **Q: Can rubber washers be discarded when using them to hold components onto bolts?**

A: Yes, rubber washers can be thrown away if they are being used to hold components onto bolts.

SOME PARTS MAY BE SHOWN FOR CLARITY OF INSTRUCTIONS ONLY. DO NOT PROCEED UNTIL YOU ARE SURE ALL PARTS ARE PRESENT. PLEASE READ ALL INSTRUCTIONS BEFORE PROCEEDING. IF IN ANY DOUBT WHEN FITTING OUR PRODUCTS, CONSULT ONE OF OUR DEALERS OR HAVE FITTED BY A QUALIFIED TECHNICIAN.

EASE NOTE THAT THE WAY THE KIT IS PACKED DOES NOT NECESSARILY REPRESENT THE WAY OF MOUNTING TO THE BIKE.

IN THE EVENT OF RUBBER WASHERS BEING USED TO HOLD COMPONENTS ONTO BOLTS, THESE RUBBER WASHERS CAN BE THROWN AWAY.

TOOLS REQUIRED

- 3mm, 4mm & 5mm A/F ALLEN TOOLS
- 8-12MM SPANNER
- TORX SET

GENERAL TORQUE SETTINGS

- M4 BOLT = 8Nm
- M5 BOLT = 12Nm
- M6 BOLT = 15Nm
- M8 BOLT = 20Nm
- M10 BOLT = 40Nm
- M12 BOLT = 40Nm

LEGEND

ITEM NO.	DESCRIPTION	QTY
ITEM 1	3mm ALUMINIUM CHAIN GUARD	1

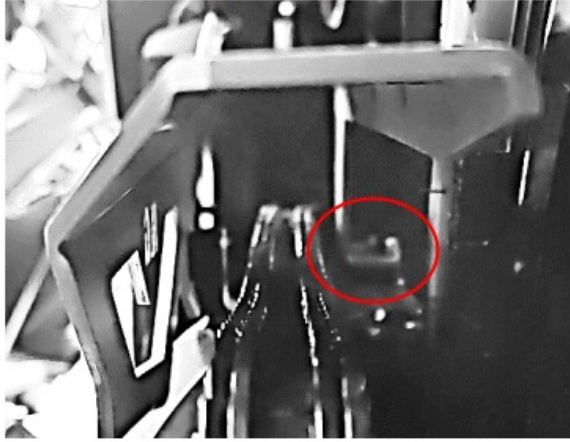
FITTING PICTURES

1. Remove the plastic OEM chain guard by removing the three bolts shown in Picture 1 & 2.

Picture 1



Picture 2



2. Using the three OEM bolts (in the same positions they were removed from), thread them through the chain guard and into the mounting lugs on the swingarm one by one.

It is recommended to use a thread-locking compound at this stage.

3. Tighten all three to the correct torque settings using the OEM torque settings for the bolts used.

Please note: Remember to check the torque setting when performing routine maintenance (cleaning/servicing chain).

CONSUMER NOTICE

The catalog description and any exhibition of samples are only broad indications of the Products and R&G may make design changes which do not diminish their performance or visual appeal and supplying them in such state shall conform to the order. The Buyer acknowledges no representation or warranty (other than as to title) has been given or will apply to the Products other than those in R&G's order or confirmation and the Buyer confirms it has chosen the Products as being of merchantable quality and suitable for its particular purposes. Where R&G fits the Products or undertakes other services it shall exercise reasonable skill and care and rectify any fault free of charge unless the workmanship has been disturbed. The Buyer is responsible for ensuring that the warranty on the motorcycle is not affected by the fitting of the Products. On return of any defective Products R&G shall at its option either supply a replacement or refund the purchase money but shall not be liable if the Products have been modified or used or maintained otherwise than in accordance with R&G's or manufacturer's instructions and good engineering practice or if the defect arises from accident or neglect. Other than identified above and subject to R&G not limiting its liability for causing death and personal injury, it shall not be liable for indirect or consequential loss and otherwise its liability shall be limited to the amounts paid by the Buyer for the Products or the fitting or service concerned. These terms do not affect the Buyer's statutory rights.

R&G RACING RETURNS POLICY (NON-FAULTY GOODS)

Returns must be pre-authorized (if not pre-authorized the return will be rejected). Goods may only be returned direct to us if they were purchased direct from us (customer must prove if necessary). Otherwise to be returned to original vendor. Goods must be in re-sellable condition, in the opinion of R&G Racing. All returns are subject to a 25% restocking and handling fee (25% of the gross value exc. P&P – at the prevailing price at time of purchase). The customer must pay any and all carriage charges. No returns of discontinued products, unless within 14 days of purchase. This policy does not affect your statutory rights and does not refer to faulty goods.

R&G Racing

Unit 1, Shelley's Lane, East Worldham, Alton, Hampshire, GU34 3AQ


Tel: +44 (0)1420 89007

Fax: +44 (0)1420 87301

www.rg-racing.com

Email: info@rg-racing.com

Documents / Resources

 <p>Page 4 of 4</p> <p>R&G RACING CONNECTIONS LTD. LONDON</p> <p>READ CAREFULLY THE FOLLOWING INSTRUCTIONS TO AVOID ANY DAMAGE TO YOUR MOTORCYCLE AND TO YOURSELF. ALWAYS WEAR YOUR SAFETY GEAR AND FOLLOW THE INSTRUCTIONS OF YOUR LOCAL AUTHORITIES.</p> <p>IF YOU ARE NOT SURE ABOUT ANYTHING, PLEASE CONTACT YOUR DEALER OR THE R&G CUSTOMER SERVICE DEPARTMENT.</p> <p>PLEASE NOTE THAT THE R&G IS A RACING GEAR AND IT IS NOT DESIGNED TO BE USED IN A SITUATION WHERE IT IS NOT INTENDED TO BE USED. IT IS NOT A SAFETY GEAR AND IT IS NOT A PROTECTIVE GEAR. IT IS A RACING GEAR AND IT IS NOT A PROTECTIVE GEAR. IT IS A RACING GEAR AND IT IS NOT A PROTECTIVE GEAR.</p> <p>READ CAREFULLY THE FOLLOWING INSTRUCTIONS TO AVOID ANY DAMAGE TO YOUR MOTORCYCLE AND TO YOURSELF. ALWAYS WEAR YOUR SAFETY GEAR AND FOLLOW THE INSTRUCTIONS OF YOUR LOCAL AUTHORITIES.</p> <p>IF YOU ARE NOT SURE ABOUT ANYTHING, PLEASE CONTACT YOUR DEALER OR THE R&G CUSTOMER SERVICE DEPARTMENT.</p> <p>PLEASE NOTE THAT THE R&G IS A RACING GEAR AND IT IS NOT DESIGNED TO BE USED IN A SITUATION WHERE IT IS NOT INTENDED TO BE USED. IT IS NOT A SAFETY GEAR AND IT IS NOT A PROTECTIVE GEAR. IT IS A RACING GEAR AND IT IS NOT A PROTECTIVE GEAR. IT IS A RACING GEAR AND IT IS NOT A PROTECTIVE GEAR.</p> <p>READ CAREFULLY THE FOLLOWING INSTRUCTIONS TO AVOID ANY DAMAGE TO YOUR MOTORCYCLE AND TO YOURSELF. ALWAYS WEAR YOUR SAFETY GEAR AND FOLLOW THE INSTRUCTIONS OF YOUR LOCAL AUTHORITIES.</p> <p>IF YOU ARE NOT SURE ABOUT ANYTHING, PLEASE CONTACT YOUR DEALER OR THE R&G CUSTOMER SERVICE DEPARTMENT.</p> <p>PLEASE NOTE THAT THE R&G IS A RACING GEAR AND IT IS NOT DESIGNED TO BE USED IN A SITUATION WHERE IT IS NOT INTENDED TO BE USED. IT IS NOT A SAFETY GEAR AND IT IS NOT A PROTECTIVE GEAR. IT IS A RACING GEAR AND IT IS NOT A PROTECTIVE GEAR. IT IS A RACING GEAR AND IT IS NOT A PROTECTIVE GEAR.</p>	<p>R AND G CG0029BK Chain Guard [pdf] Installation Guide CG0029BK Chain Guard, CG0029BK, Chain Guard, Guard</p>
---	---

References

- [R RACING.COM - YOUR RACING CONNECTION](#)
- [Welcome to R&G | Setting the standard in bolt-on motorcycle accessories and Crash Protectors](#)
- [Welcome to R&G | Setting the standard in bolt-on motorcycle accessories and Crash Protectors](#)
- [User Manual](#)

Manuals+, Privacy Policy

This website is an independent publication and is neither affiliated with nor endorsed by any of the trademark owners. The "Bluetooth®" word mark and logos are registered trademarks owned by Bluetooth SIG, Inc. The "Wi-Fi®" word mark and logos are registered trademarks owned by the Wi-Fi Alliance. Any use of these marks on this website does not imply any affiliation with or endorsement.