



QWTEK BT50RTK Bluetooth 5.0 USB Adapter Installation Guide


[Home](#) » [QWTEK](#) » QWTEK BT50RTK Bluetooth 5.0 USB Adapter Installation Guide 

QWTEK BT50RTK Bluetooth 5.0 USB Adapter Installation Guide

**Bluetooth 5.0 USB Adapter
Quick Installation Guide
Model: BT50RTK
Ver1.0**

Driver Installation From CD

Compatible systems Windows 7/8.1/10/ Linux (The driver is automatically adaptive to the version and language of Windows OS)

1. Put the CD in the disk drive, open "My Computer" or "This PC" and click this icon .
2. Click "Next" to start the installation.
3. Click "Finish" to end the installation and then restart the computer.

Contents

- [1 Tips for Installation](#)
- [2 Bluetooth Pairing Steps](#)
- [3 Connect Windows 10 OS](#)
- [4 Installation On Linux Operating System](#)
- [5 FCC Statement](#)
- [6 Documents / Resources](#)
- [7 Related Posts](#)

Tips for Installation

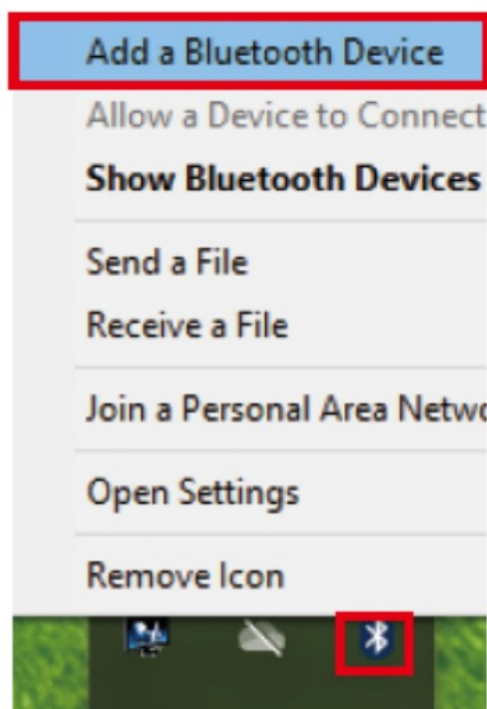
1. To make sure the driver installation not be intercepted, please shut down the antivirus software on your PC during the process.
2. If your PC has a built-in Bluetooth device (e.g. Window 8/10 computers), please disable the device before driver installation, (press “win + R” in the keyboard and type “devmgmt. MSC” to find built-in Bluetooth).
3. If you have installed other Bluetooth drivers, please uninstall it first (e.g. press “win + R” on the keyboard and type “appwiz. CPL” to find the previous Bluetooth driver).

Bluetooth Pairing Steps

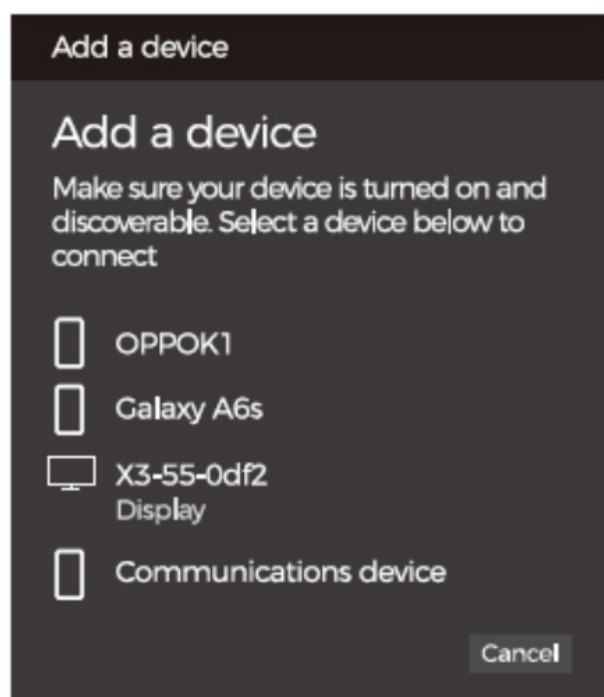
Tips for Installation

Turn on Bluetooth on your device first like mobile phones, headsets, speakers, Bluetooth mouse, Bluetooth keyboard, gamepads, etc., before pairing with QWNET BT50RTK USB adapter.

Connect Windows 10 Os



1



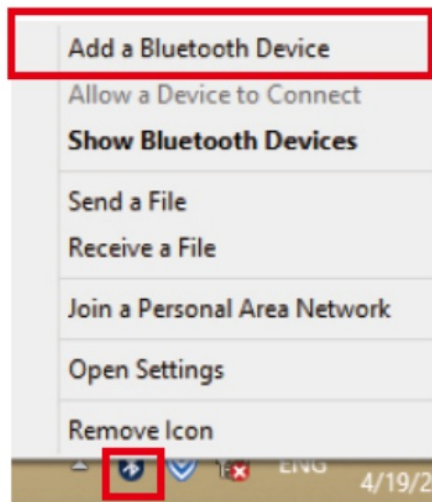
4

1. Click the Bluetooth icon on the bottom right corner of the taskbar-click “Add a device” (if there is not a Bluetooth icon in the taskbar, please follow the steps below. Open Device Manager—click Bluetooth icon- display The Bluetooth icon in the notification area)
2. Click ‘Add a device’
3. Click Bluetooth’
4. After the computer searching for the nearby Bluetooth devices. please choose one to pair with.

Note

Note This may happen that the Bluetooth device cannot stream audio when it reconnects to the computer. You need to try to right-click the device the icon on the PC: and choose to connect for next and re-configuration as above until connection successfully

Connect Windows 8.1 Os



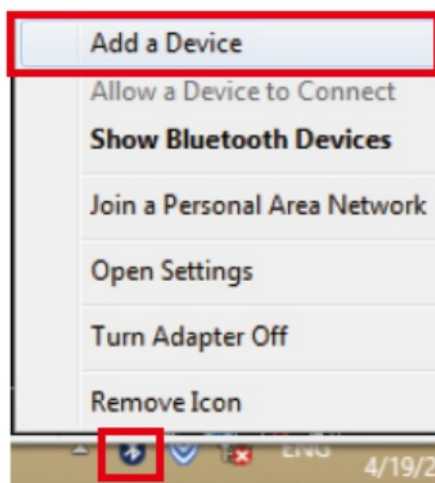
1



3

1. After the Bluetooth driver is installed, click the Bluetooth icon on the bottom of the right corner of the taskbar—click 'Add a device' (If there is not a Bluetooth icon in the taskbar, please follow the steps below. Open Device Manager click Bluetooth icon- display Bluetooth icon in the notification area)
2. After the computer searching for the nearby Bluetooth devices, then choose the device which needed to be paired and click 'paring'
3. The device icon will be displayed on your computer after pairing (some Bluetooth speakers would play a voice prompt when connected)

Connect Windows 7 Computer



1



3 (a)

938866

Does the code above match the code on the device:

- ☒ Yes
☐ No
☐ The device is not displaying a code

[What if this code does not match the code on my device?](#)



Galaxy A6s

Next

Cancel

This device has been successfully added to this computer

Windows is now checking for drivers and will install them if necessary. You may need to wait for this to finish before your device is ready to use.

To verify if this device finished installing properly, look for it in [Devices and Printers](#).



Galaxy A6s

Close

1. Click the Bluetooth icon on the bottom right corner of the taskbar – click 'Add a device' (If there is not a Bluetooth icon in the taskbar, please follow the steps below. Open Device Manager — click Bluetooth icon – display Bluetooth icon in the notification area)
2. After the computer searching for the nearby Bluetooth devices, please choose one to pair with and click 'Next'
3. Pairing code would pop up both on your computer and mobile phone. Confirm the pairing request on your phone first, and click 'Next' on the PC
4. It shows on the computer that your phone is successfully connected with the PC

Note

Note: This may happen that the Bluetooth device cannot stream audio when it reconnects to the computer. You need to try right-click the device icon on the C and choose to connect for next and re-configuration as above until connection successfully.

Installation On Linux Operating System

Driver Installation Steps

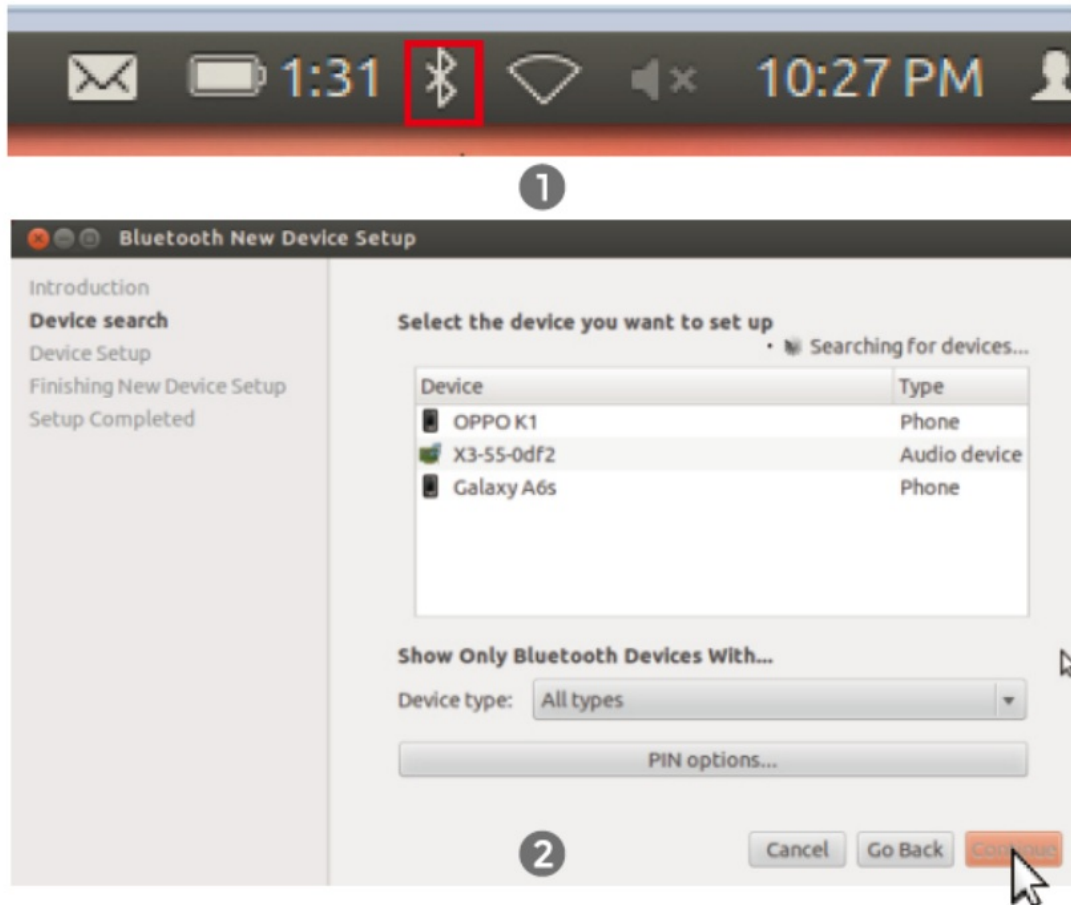
1. Put the CD in the disk drive, enter the folder, and copy a folder named Linux_BT to the desktop
2. Install wireless device driver, change to the driver package, and execute the below command: `Sudo make install`

Note: If you encounter an error like `depmod error: Bad version passed/lib/modules/`, please change the lines

“depmod -a S(MDL_DIR) to “depmod -a S(shell name -r)

3. Insert the Bluetooth USB dongle and Check LMP subversion by the following command Shciconfig -a
4. Now the Bluetooth USB dongle can be recognized and wireless function is added

Wireless Device Pairing Steps



1. Click the Bluetooth icon on your computer and add a device
2. After the computer searching for the nearby Bluetooth devices. you can choose one to pair with and click 'Continue'

FCC Statement

This device complies with part 15 of the FCC rules. Operation is subject to the following two conditions: (1) this device may not cause harmful interference, and (2) this device must accept any interference received, including interference that may cause undesired operation. Changes or modifications not expressly approved by the party responsible for compliance could void the user's authority to operate the equipment.

NOTE: This equipment has been tested and found to comply with the limits for a Class B digital device, pursuant to part 15 of the FCC Rules. These limits are designed to provide reasonable protection against harmful interference in a residential installation. This equipment generates uses and can radiate radio frequency energy and, if not installed and used in accordance with the instructions, may cause harmful interference to radio communications. However, there is no guarantee that interference will not occur in a particular installation. If this equipment does cause harmful interference to radio or television reception, which can be determined by turning the equipment off and on, the user is encouraged to try to correct the interference by one or more of the following measures:

- Reorient or relocate the receiving antenna.
- Increase the separation between the equipment and receiver.
- Connect the equipment into an outlet on a circuit different from that to which the receiver is connected.

- Consult the dealer or an experienced radio/TV technician for help.

The device has been evaluated to meet general RF exposure requirements. The device can be used in portable exposure conditions without restriction.

Documents / Resources

<div><div><div><div><div><div></div><div></div></div></div><div><div><div></div><div></div></div></div><div><div><div></div><div></div></div></div><div><div><div></div><div></div></div></div></div></div><div><div><div><div></div><div></div></div></div><div><div><div></div><div></div></div></div><div><div><div></div><div></div></div></div><div><div><div></div><div></div></div></div></div></div> <div><div><div><div></div><div></div></div></div><div><div><div></div><div></div></div></div><div><div><div></div><div></div></div></div><div><div><div></div><div></div></div></div></div>
--