



QuWireless XR60
Wireless QuMax
for Sierra
Semtech



QuWireless XR60 Wireless QuMax for Sierra Semtech Installation Guide

[Home](#) » [QuWireless](#) » QuWireless XR60 Wireless QuMax for Sierra Semtech Installation Guide 

Contents

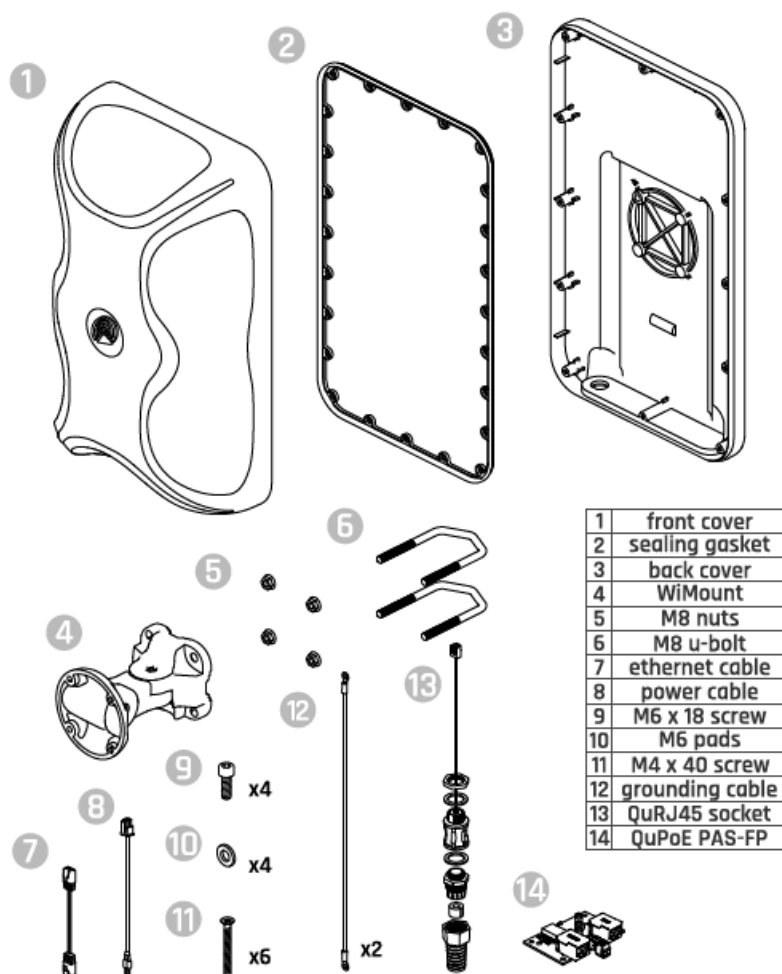
- [1 QuWireless XR60 Wireless QuMax for Sierra Semtech](#)
- [2 What's inside](#)
- [3 Installation](#)
- [4 POE Power Supply – STANDARD](#)
- [5 Documents / Resources](#)
 - [5.1 References](#)
- [6 Related Posts](#)



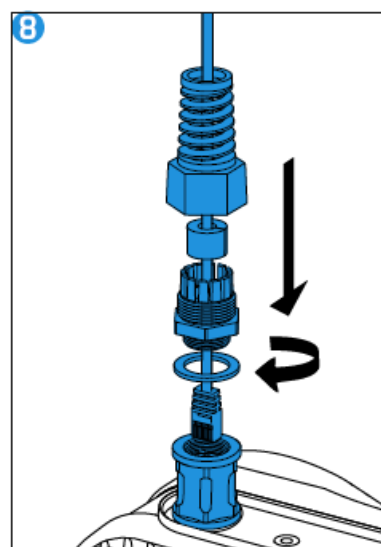
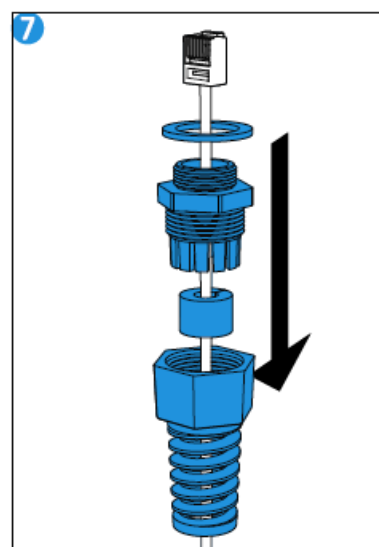
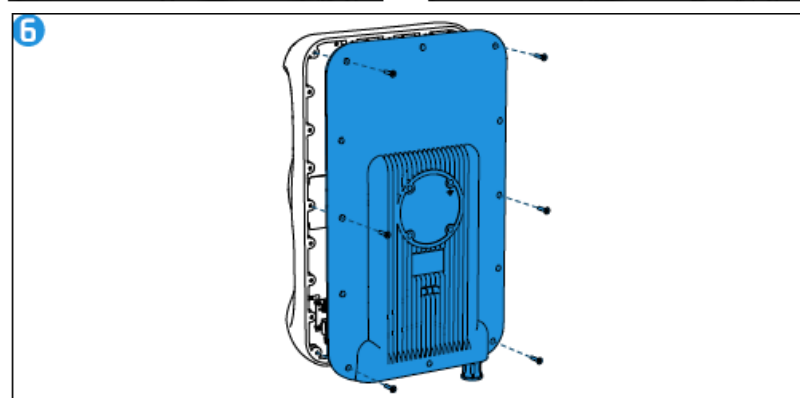
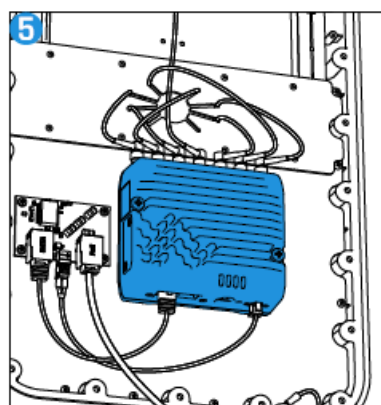
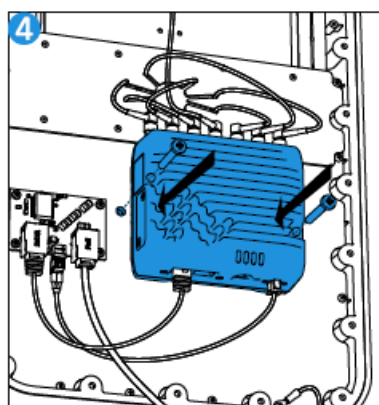
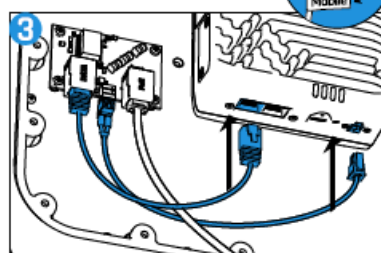
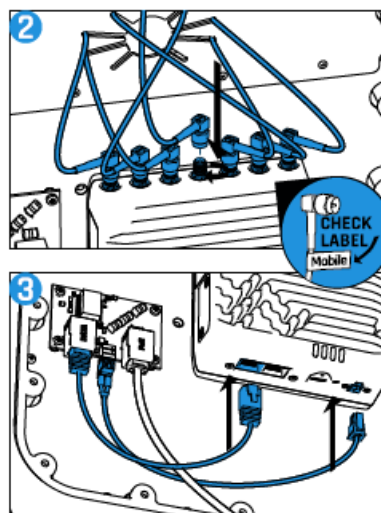
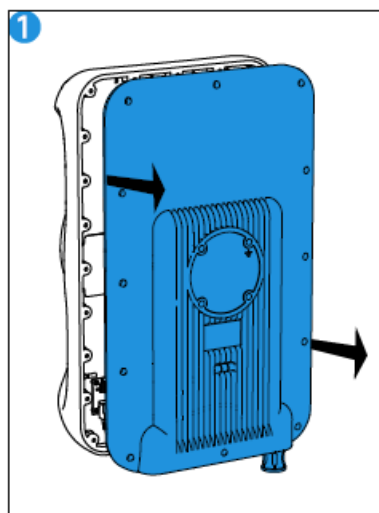
QuWireless XR60 Wireless QuMax for Sierra Semtech

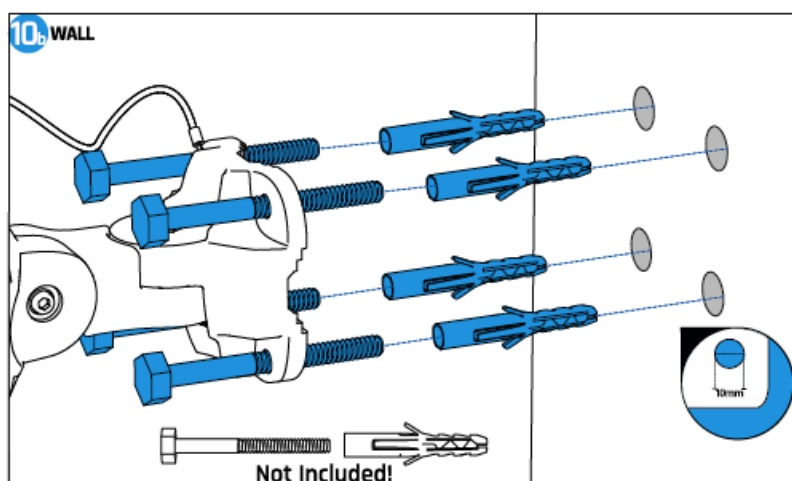
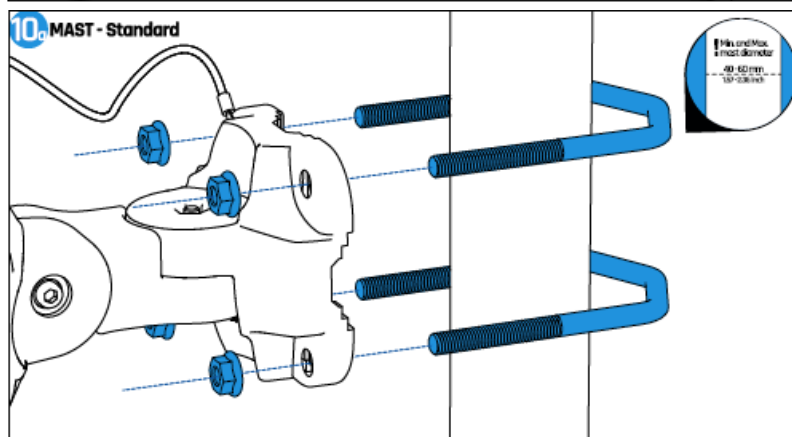
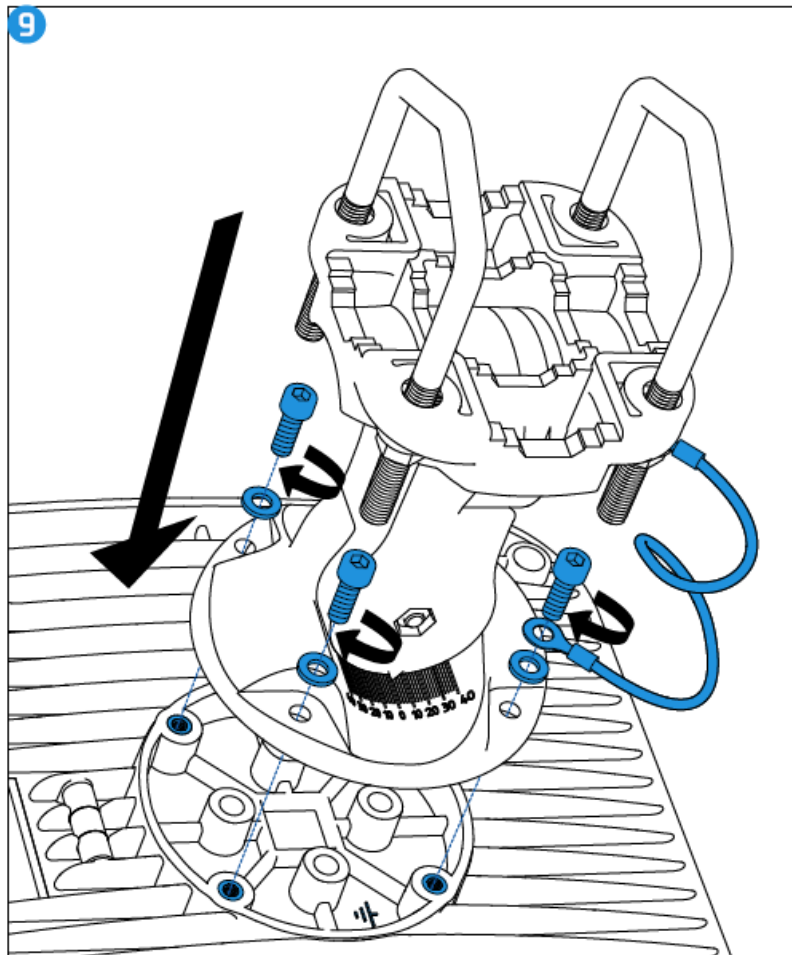


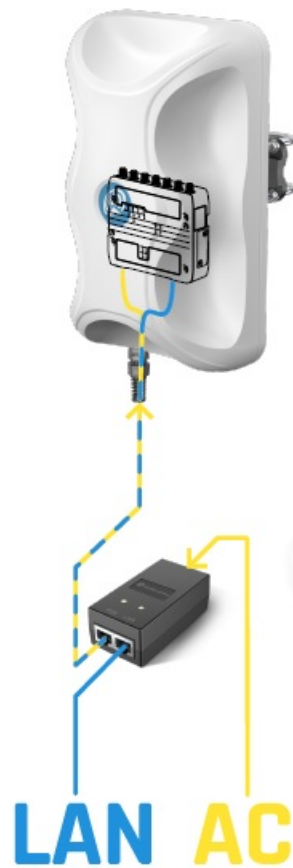
What's inside



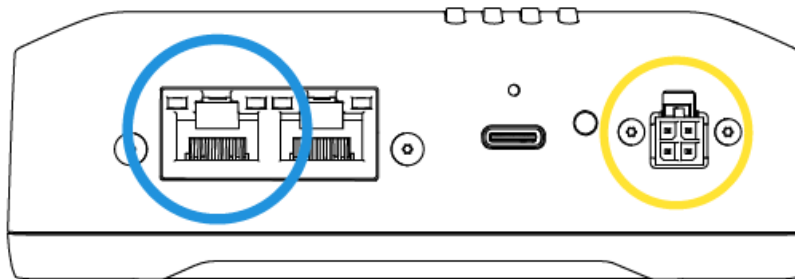
Installation







Please note that Semtech XR60 router does NOT support Passive PoE on the ETH port



Before connecting PoE to your router, please check specification of your model. Connecting PoE to model that's not supporting PoE can damage your router.

For power supply, you can use any Gigabit Passive PoE power supply with a voltage of 9-3DV.

You can use, for example, a power supply from our offer: QuPSU GP241


Please note that the Passive PoE power supply is not included.



www.quwireless.com



Documents / Resources

	<p>QuWireless XR60 Wireless QuMax for Sierra Semtech [pdf] Installation Guide XR60, XR60 Wireless QuMax for Sierra Semtech, Wireless QuMax for Sierra Semtech, QuMax for Sierra Semtech, Sierra Semtech, Semtech</p>
---	--

References

- [User Manual](#)

[Manuals+](#), [Privacy Policy](#)

This website is an independent publication and is neither affiliated with nor endorsed by any of the trademark owners. The "Bluetooth®" word mark and logos are registered trademarks owned by Bluetooth SIG, Inc. The "Wi-Fi®" word mark and logos are registered trademarks owned by the Wi-Fi Alliance. Any use of these marks on this website does not imply any affiliation with or endorsement.