



Qulose JL004 Bluetooth Keyboard and Mouse Set User Guide

[Home](#) » [Qulose](#) » Qulose JL004 Bluetooth Keyboard and Mouse Set User Guide 

Qulose JL004 Bluetooth Keyboard and Mouse
Set User Guide

Dual Mode Wireless Mouse& Keyboard Set

(2.4G & Bluetooth)



Compatible System

iOS/Android / Windows

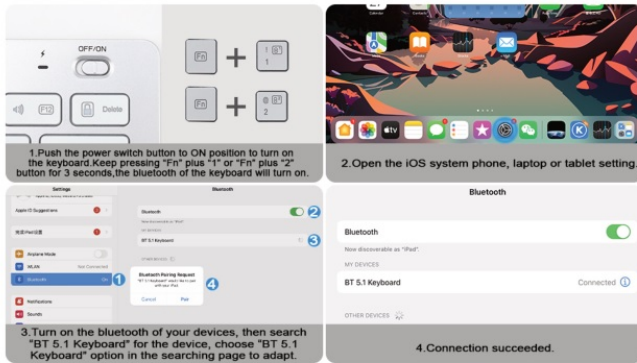
Note:Please read the user manual carefully before you start using this product.

Contents

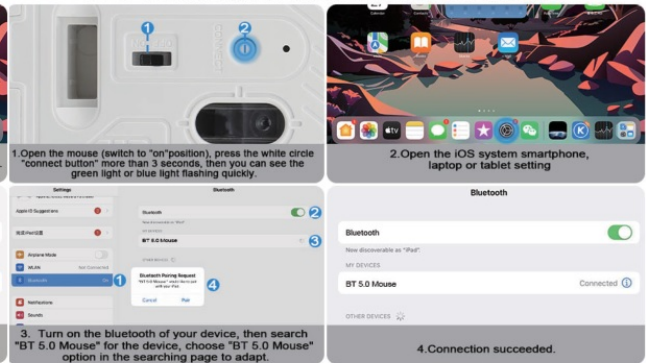
- [**1 Bluetooth Pairing Instructions**](#)
- [**2 2.4G Pairing Instructions**](#)
- [**3 2.4G Mouse Use Manual**](#)
- [**4 Keyboard Overview**](#)
- [**5 Safety Caution**](#)
- [**6 Keys and Functions**](#)
- [**7 Backlight Control**](#)
- [**8 Multi-channel Connection**](#)
- [**9 Charging**](#)
- [**10 Keyboard Specifications**](#)
- [**11 Charging for Mouse**](#)
- [**12 Packing List**](#)
- [**13 Wireless Mouse**](#)
- [**14 Mouse Specifications**](#)
- [**15 Contact Us**](#)
- [**16 FAQ**](#)
- [**17 Documents / Resources**](#)
- [**18 Related Posts**](#)

Bluetooth Pairing Instructions

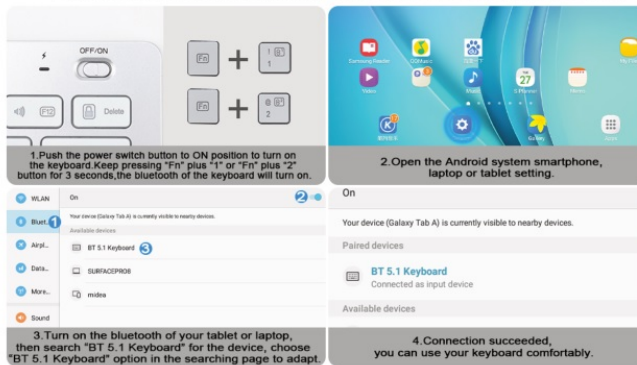
iOS Connection Instructions for Keyboard



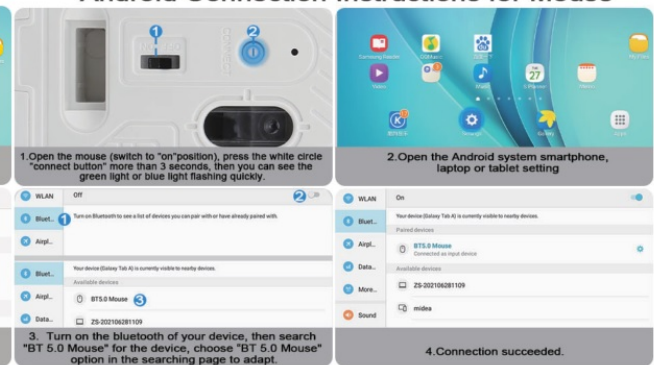
iOS Connection Instructions for Mouse



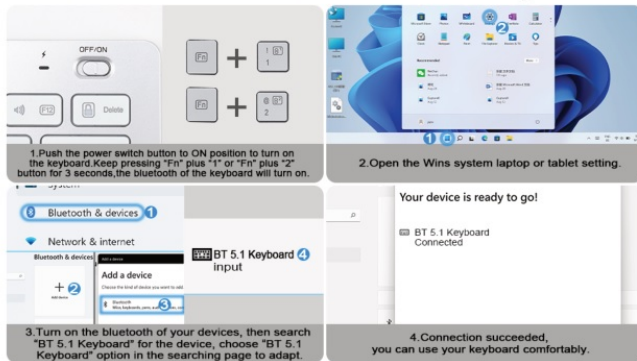
Android Connection Instructions for Keyboard



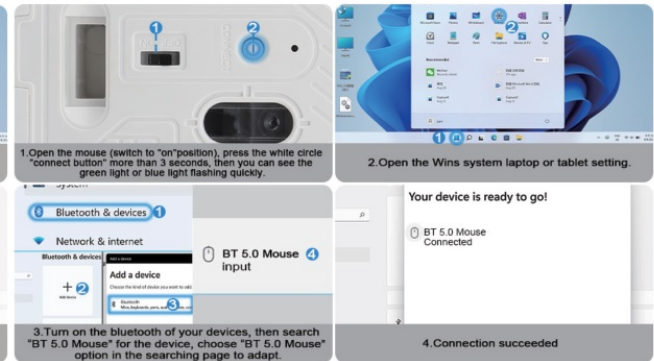
Android Connection Instructions for Mouse



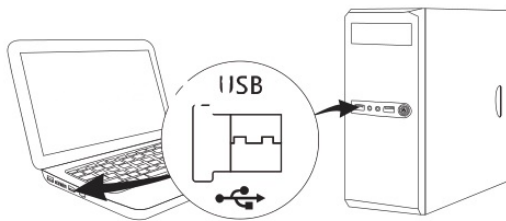
Wins Connection Instructions for Keyboard



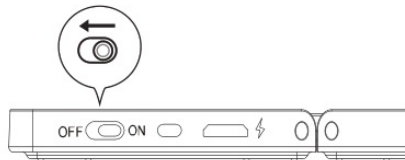
Wins Connection Instructions for Mouse



2.4G Pairing Instructions



1. You can take out the USB receiver in the bottom of the mouse, then plug the receiver into an available USB port on your laptop or desktop.



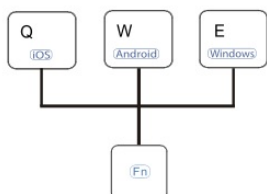
2. Push the power switch button to ON position to turn on the keyboard.



3. Press Fn + 3 to select 2.4G channel.

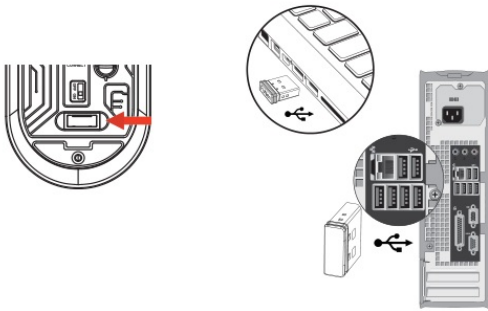


4. Then you can use the keyboard.



5. Press Fn + Q/W/E to select your system to ensure that the function keys normally.

2.4G Mouse Use Manual



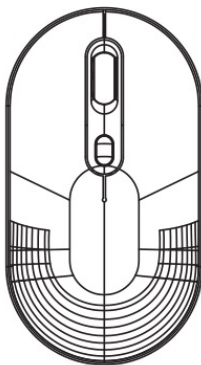
1.You can take out the USB receiver in the bottom of the mouse, then plug the receiver into an available USB port on your laptop or desktop.



2.Open the mouse (switch to "on"position), the red light of mouse will be on.

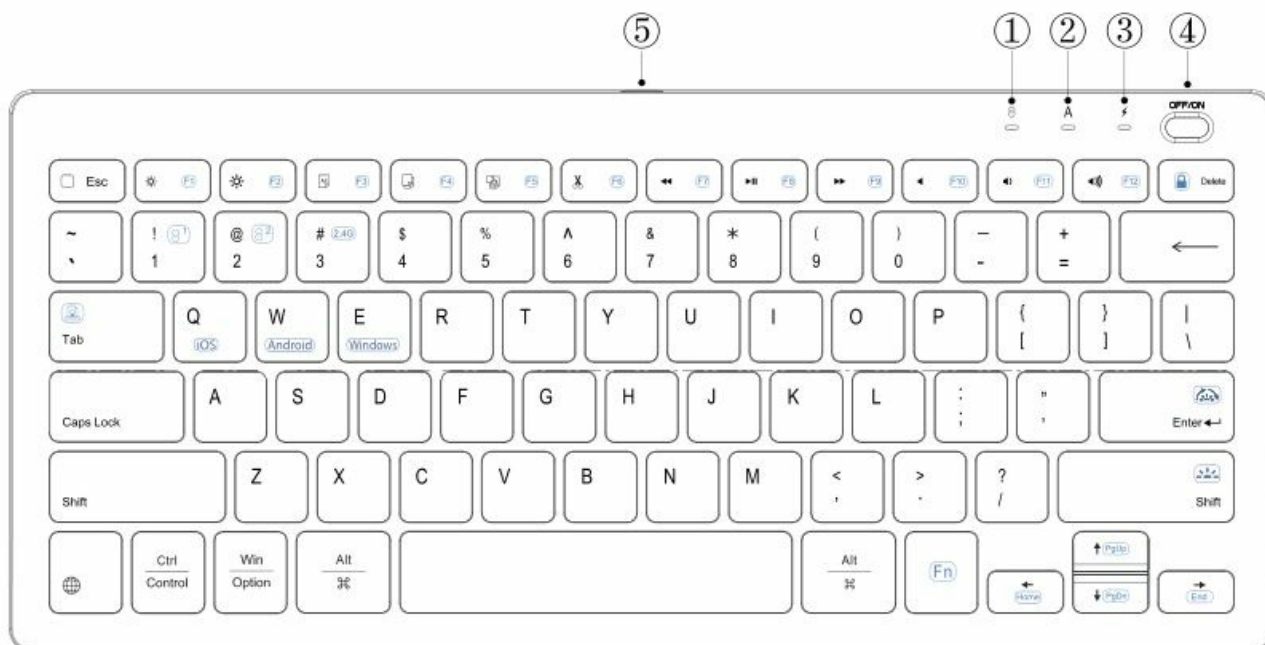


3.Short press the white circle "connect button", you can see the small light above switch to the red light state between red,green and blue.



4.You can use the mouse normally.

Keyboard Overview



1. Bluetooth indicator
2. Caps indicator
3. Charging/2.4G indicator
4. Power switch
5. USB charging










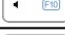
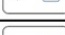



Indicator








No.	Light	Keyboard Indicator	Status
①		Bluetooth Indicator	Switch Bluetooth the indicator will turn blue for 1s, match Bluetooth flash in blue, extinguished when connected successfully.
②		Caps Indicator	Press Caps Lock, the indicator will always turn blue.
③		Charging/2.4G Indicator	Flashing red when low power, charging always be red, full charge will turn green. Switch 2.4G the indicator will turn red for 1s, matching will flash in red and extinguished when connected successfully.
④		Power Switch	Turn on the switch, all the indicator will light for 1s.
⑤		Type-c Port	Charging will turn red.

Safety Caution

1. Keep the keyboard and mouse away from sharp objects.
2. Do not place heavy object on the keyboard and mouse.
3. Away from microwave items.
4. Do not force or distorted the keyboard and mouse.
5. Keep away from oil, chemical or other organic liquid, items.

Keys and Functions

Buttons	IOS System		Android System		Win System	
	Press Directly	Fn +	Press Directly	Fn +	Press Directly	Fn +
 Esc	Home	No Function	Home	No Function	Esc	No Function
	Brightness -	F1	Brightness -	F1	Brightness -	F1
	Brightness +	F2	Brightness +	F2	Brightness +	F2
	Select	F3	Select	F3	Select	F3
	Copy	F4	Copy	F4	Copy	F4
	Paste	F5	Paste	F5	Paste	F5
	Cut	F6	Cut	F6	Cut	F6
	Previous Track	F7	Previous Track	F7	Previous Track	F7
	Play/Pause	F8	Play/Pause	F8	Play/Pause	F8
	Next Track	F9	Next Track	F9	Next Track	F9
	Mute	F10	Mute	F10	Mute	F10
	Volume -	F11	Volume -	F11	Volume -	F11
	Volume +	F12	Volume +	F12	Volume +	F12
	Delete	Lock Screen	Delete	Lock Screen	Delete	Lock Screen
Tips	iOS: Ctrl + Space key switch language Android: Shift + Space key switch language Windows: Alt + Shift key switch language					



	The FN key is used in combination with other keys to access special features.		Press Fn+ Q to switch the function keys to iOS system.
	Press Fn + this key to choose bluetooth channel 1.		Press Fn+ W to switch the function keys to Android system.
	Press Fn + this key to choose bluetooth channel 2.		Press Fn+ E to switch the function keys to Windows system.
	Press Fn + this key to choose bluetooth channel 3.		

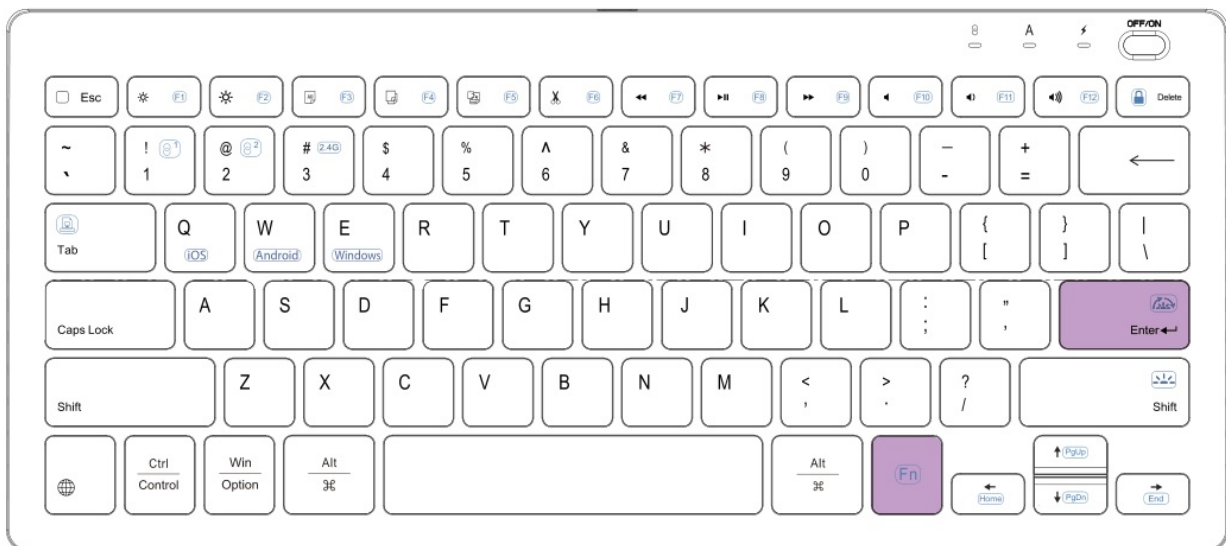
Tips: 1. When switching the operating system, please remember to press the corresponding button (fn + Q/W/E) to switch, so as not to affect normal use.



2. If it fails to connect properly, it is recommended to turn off the Bluetooth keyboard power supply, restart and connect again.

Backlight Control



Press "  " + "  " to adjust backlight brightness



Press "  " + "  " to switch the lighting effect

Note: 1.If no buttons are pressed within 1 minute the backlight will turn off automatically.

2.The backlight function will be turned off automatically when the battery is low.

Multi-channel Connection

1. When connecting the first device, first press "Fn + 1" (bluetooth 1) and then press Fn + C to start the connection.
2. Before connecting the second device, press "Fn + 2" (bluetooth 2) once, then press Fn + C to start the connection.
3. Before connecting the third device, press "Fn + 3" (2.4G channel) once, then press Fn+C to start the connection.
4. To use multiple devices at the same time, press Fn+1/2/3 to switch to freely switch to connected devices.

Charging

1. The keyboard charging port is TYPE-C charging port, the input of the voltage can not exceed DC-5V the keyboard will be broken if the voltage exceed the limit.
2. Connect the TYPE-C plug of the charging cable to the keyboard charging socket the other side is connected to the charger of the tablet PC or the charging interface of the tablet PC charges the keyboard.
3. Please charge it for at least 3 hours before using for the first time and then charging at least 2 hours when it is low battery in the future.
4. The green indicator light flashes: low battery, please charge it on time.
5. When charging, please check whether the charging port is powered normally.

Note: Please do not charge the keyboard for a long time. Keeping it plugged in for a long time will deplete the keyboard's battery life.

Keyboard Specifications

Working Current	Backlit≤200mA	Working Voltage	3.0~4.2 V
Low Power Alarm	3.0~3.3 V	Working Time	Backlit ≥ 5 hours
Stand-by Time	150 days	Sleep Current	< 1mA
Battery Lifetime	2 years	Battery Capacity	750 mAh
Charging Time	Type-C USB	Keycaps Lifetime	3 million
Charging Port	2~3 hours	Connect Distance	≤10 m
Awake Time	≤ 2 seconds	Charging Current	≤ 330 mA
Working Temperature	-10 °C~55 °C	Buttons	78 keys

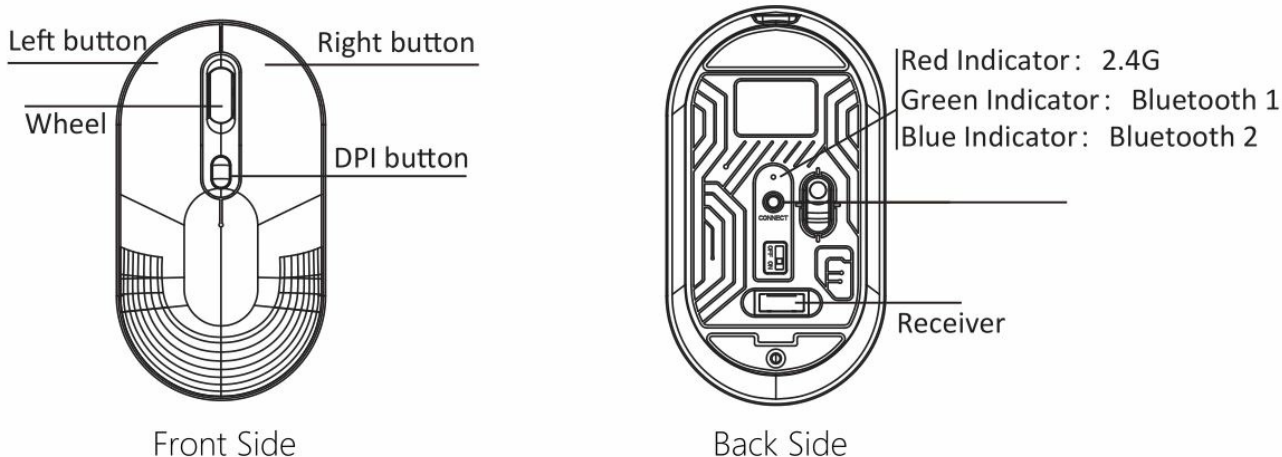
Charging for Mouse

1. You can use the attached cable charge for your mouse when it's low battery.
2. When charging, the indicator will light up, extinguished when full charge.
3. When charging, please check whether the charging port is powered normally

Packing List

1. Wireless Keyboard
2. Wireless Mouse (with USB receiver
3. Type-C Charging Cable (No Charger)
4. Manual

Wireless Mouse



Mouse Specifications

Product Size	2.4 X 4.33 X 1.3 inch	Working Distance	10m
Mouse Weight	0.18 lb(with USB Receiver)	Working Current	<10mA
Working Voltage	3V	Sleep Time	10 min
Sleep Current	0.02mA	Awaken Mouse	Press Key

Contact Us

1. If you have any use problems with our keyboard, please do not hesitate to contact us via qulose@outlook.com.


Please rest assured that we will definitely help you solve them!

2. The device is provide with one-year limited hardware warranty from the purchase day.

FAQ

Question	Answer
The LED indicator did not light up when the keyboard was turned on.	The keyboard battery is empty.Charge it according to the instructions in the "Charging" section.
The USB receiver does not recognize?	The USB receiver is not inserted into the tablet or computer.Please check if the USB interface is in good contact.
The smartphone computer or tablet did not find the keyboard.	Make sure you have pressed the “Connect”button You should see a flashing LED. If the LED indicator not flashing,the keyboard will not be visible to your device.
Pairing failed.The keyboard isn't in the list of searched available wireless devices.	Turn off the keyboard and delete it from the search list on your device. Then start the search again and perform a new pairing.
The keys do not work after pairing.	Check the input setting of the device.Make sure that all the settings are ON. If not,change the setting.

Documents / Resources

	Qulose JL004 Bluetooth Keyboard and Mouse Set [pdf] User Guide JL004, C1ZN3, ujf5L, JL004 Bluetooth Keyboard and Mouse Set, Bluetooth Keyboard and Mouse Set, Keyboard and Mouse Set, Set
---	--