

## QUIN TP82 Portable Printer



# QUIN TP82 Portable Printer User Guide

[Home](#) » [QUIN](#) » QUIN TP82 Portable Printer User Guide 

### Contents

- [1 QUIN TP82 Portable Printer](#)
- [2 Product Specifications](#)
- [3 Product Usage Instructions](#)
- [4 Specifications](#)
- [5 Printer Components](#)
- [6 Indicator light guide](#)
- [7 Instruction](#)
- [8 OVERVIEW](#)
- [9 USING INSTRUCTION](#)
- [10 FCC](#)
- [11 Frequently Asked Questions](#)
- [12 Documents / Resources](#)
  - [12.1 References](#)



**QUIN TP82 Portable Printer**



## Product Specifications

- **Model:** 3FTFU#VUUPO
- **Size:** 1PXFS1PSU
- **Weight:** 1PXFS#VUUPO
- **Power:** 1PXFS\*OEJDBUPS
- **Input Voltage:** 0QFO\$PWFS #VUUPO
- **Colour:** +1

## Product Usage Instructions

### Installation

1. Place the product on a flat surface.
2. Connect the power cord to an appropriate power source.
3. Follow the assembly instructions provided in the manual to set up the product.

### Operation







1. Turn on the power using the designated switch or button.
2. Use the control panel to adjust settings as needed.
3. Refer to the user manual for specific usage guidelines and tips.

### Maintenance

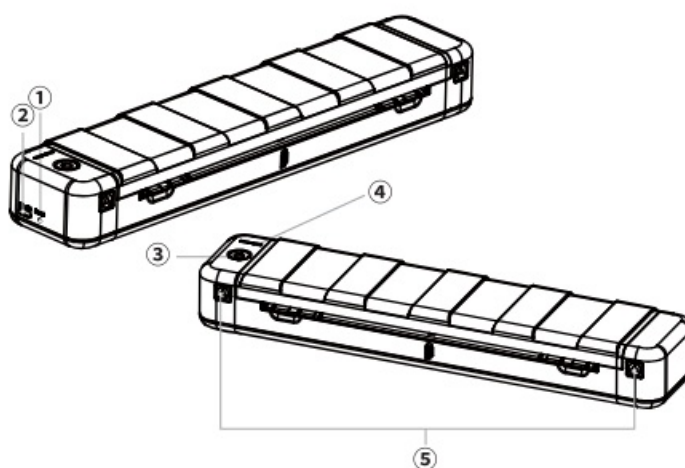
1. Regularly clean the product with a soft, damp cloth.
2. Avoid using harsh chemicals or abrasive materials that may damage the product.

- 3. Check for any loose connections or parts and tighten if necessary.

## Specifications

	<b>Pantone</b> (参考)	<b>C(%)</b>	<b>M(%)</b>	<b>Y(%)</b>	<b>K(%)</b>
	-	0	0	0	100
	-	0	0	0	20
	-	93	95	0	0
	-	10	100	100	0
	-	0	70	35	0
	-	0	0	50	0

## Printer Components



## Indicator light guide

### Power Indicator

#### Status

- Lit (Red)
- Blink Slowly (Red)
- Lit (Green)
- Blink Slowly (Green)
- Lit (Green)

#### Description

- Out of paper / Cover is open /
- Overheat

- Low power
- Normal
- Charging
- Fully Charged

## Instruction

### Install App

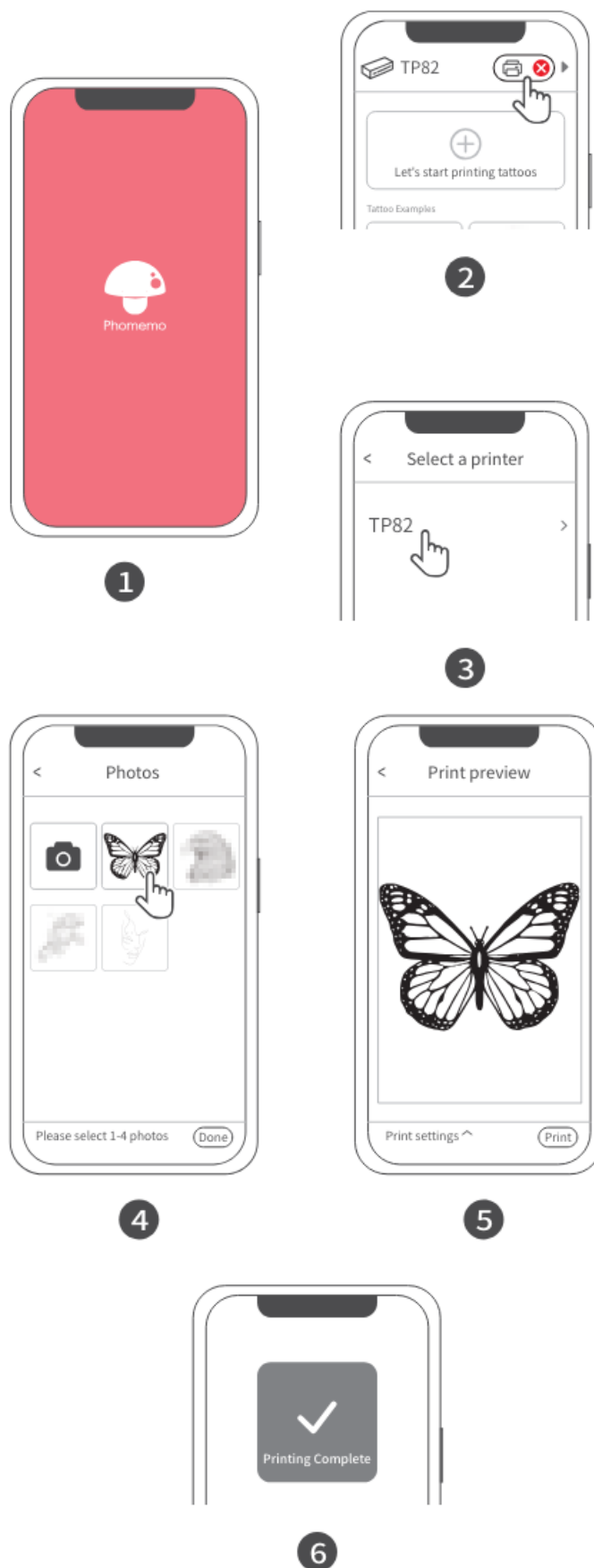


### Driver download

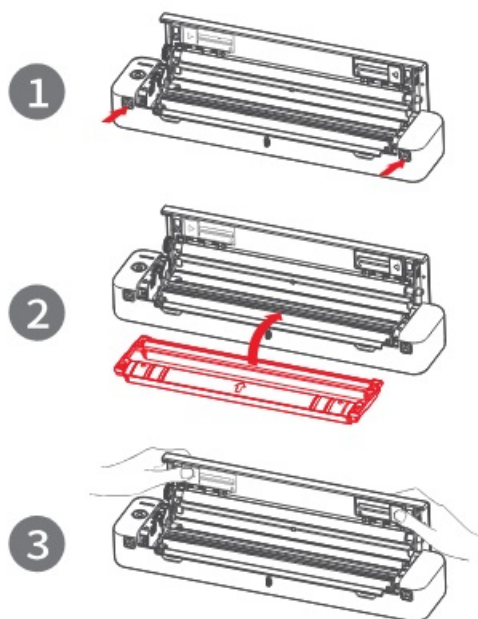
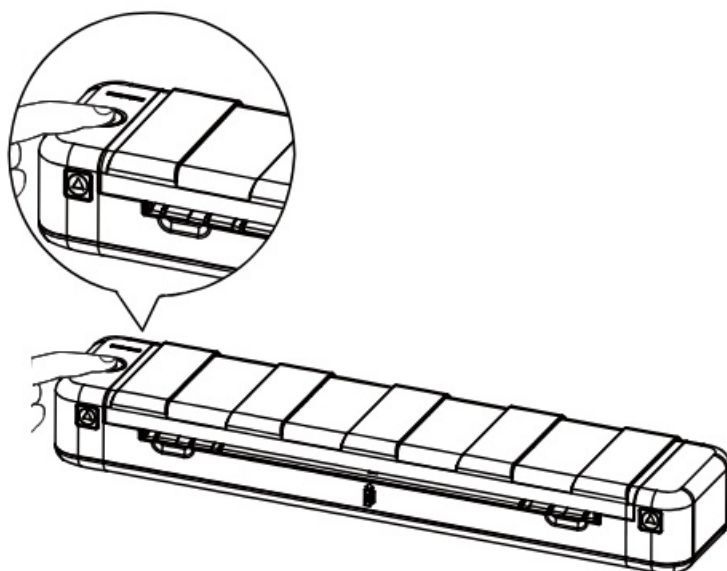


Official website: [TP82.phomemo.com](https://TP82.phomemo.com)

### Mobile ann connection

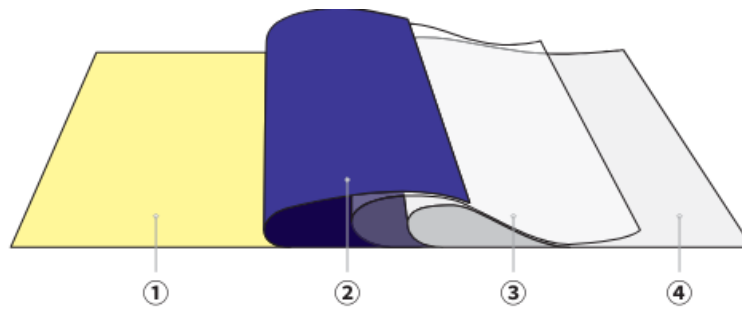


**Install and change the printer's consumable**



Please make sure to correctly insert the carbon ribbon and adjust the paper guides position before using the printer.

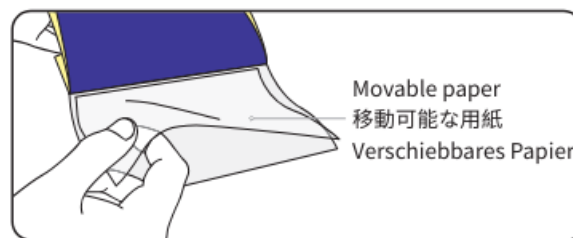
## OVERVIEW



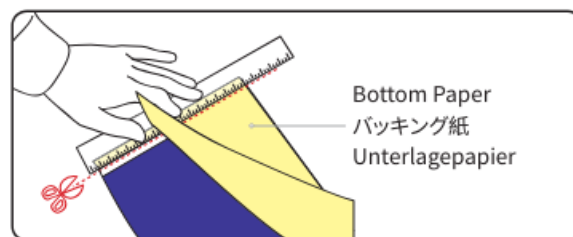
## EN

①	Bottom Paper
②	Transfer Paper
③	Protect Paper (Movable paper)
④	Tracing paper

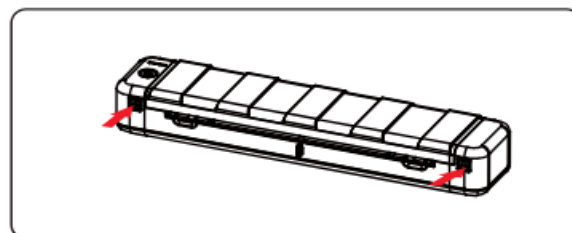
## USING INSTRUCTION

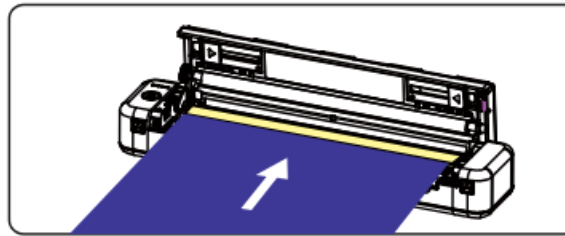


1

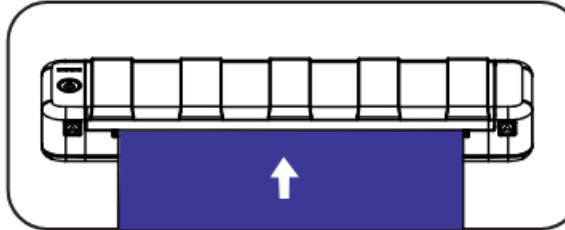


2





4



5

Place the tattoo paper according to the above steps.

#### Note

1. When you need to retrieve the printing paper, you can press the PUSH button with both hands to take it out.
2. Any issues with your printer arising from using non-official printing papers will not be covered under our warranty policy.

#### FCC

##### FCC Warning Statement

This device complies with part 15 of the FCC Rules.

Operation is subject to the following two conditions:

1. this device may not cause harmful interference,
2. this device must accept any interference received, including interference that may cause undesired operation.

**CAUTION:** Any Changes or modifications not expressly approved by the party responsible for compliance could void the user's authority to operate the equipment.

This equipment has been tested and found to comply with the limits for a Class B digital device, under part 15 of the FCC Rules. These limits are designed to provide reasonable protection against harmful interference in a residential installation. This equipment generates uses and can radiate radio frequency energy and, if not installed and used by the instructions, may cause harmful interference to radio communications. However, there is no guarantee that interference will not occur in a particular installation. If this equipment does cause harmful interference to radio or television reception, which can be determined by turning the equipment off and on, the user is encouraged to try to correct the interference by one or more of the following measures:



- Reorient or relocate the receiving antenna.
- Increase the separation between the equipment and the receiver.
- Connect the equipment to an outlet on a circuit different from that to which the receiver is connected.
- Consult the dealer or an experienced radio/TV technician for help.

#### **FCC RF exposure statement:**

The device has been evaluated to meet general RF exposure requirements. The device can be used in portable exposure conditions without restriction.

#### **ISED Warning statement**

This device contains licence-exempt transmitter(s)/receiver(s) that comply with Innovation, Science and Economic Development Canada's licence-exempt RSS(s). Operation is subject to the following two conditions:

1. This device may not cause interference.
2. This device must accept any interference, including interference that may cause undesired operation of the device.

#### **RF exposure statement**

#### **IC RF exposure statement:**

The device has been evaluated to meet the general IC RF exposure requirement. The device can be used in portable exposure conditions without restriction.

- **Type of wireless:** Bluetooth
- **Radio Frequency:** 2400-2483.5 MHz
- **Maximum Output Power (EIRP):** 10dBm

#### **SIMPLIFIED EU DECLARATION OF CONFORMITY**

internet address: [TP82.Phomemo.com](http://TP82.Phomemo.com)




Scan the QR code for more information.

#### **Frequently Asked Questions**

- **Q: How do I change the settings on the product?**
  - A: Use the control panel buttons to navigate through the menu and make adjustments.
- **Q: What should I do if the product stops working suddenly?**
  - A: Check the power source and connections. If the issue persists, contact customer support for assistance.
- **Q: Can I use this product outdoors?**
  - A: This product is designed for indoor use only. Avoid exposing it to moisture or extreme temperatures.

Documents / Resources

	<p><a href="#">QUIN TP82 Portable Printer</a> [pdf] User Guide TP82 Portable Printer, TP82, Portable Printer, Printer</p>
---	---

References

- [User Manual](#)

[Manuals+](#), [Privacy Policy](#)

This website is an independent publication and is neither affiliated with nor endorsed by any of the trademark owners. The "Bluetooth®" word mark and logos are registered trademarks owned by Bluetooth SIG, Inc. The "Wi-Fi®" word mark and logos are registered trademarks owned by the Wi-Fi Alliance. Any use of these marks on this website does not imply any affiliation with or endorsement.