



Contents [[hide](#)]

- [1 QUIN TP81D Portable Printer](#)
- [2 Specifications](#)
- [3 Product Introduction](#)
- [4 Printer Parts Instruction](#)
- [5 Getting Started](#)
- [6 Preparation Before Use](#)
- [7 Cleaning and Maintenance](#)
- [8 FCC WARNING](#)
- [9 FAQ](#)
- [10 Documents / Resources](#)
 - [10.1 References](#)

QUIN

QUIN TP81D Portable Printer

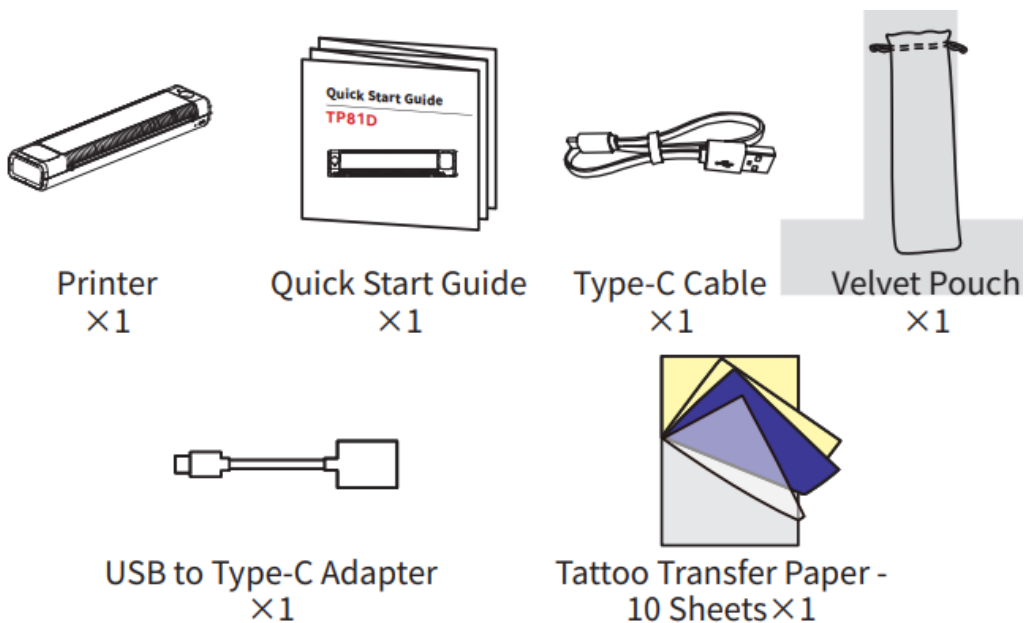


Specifications

- **Product Name:** TP81D Portable Printer
- **Model:** HVINTP81D
- **Language:** English

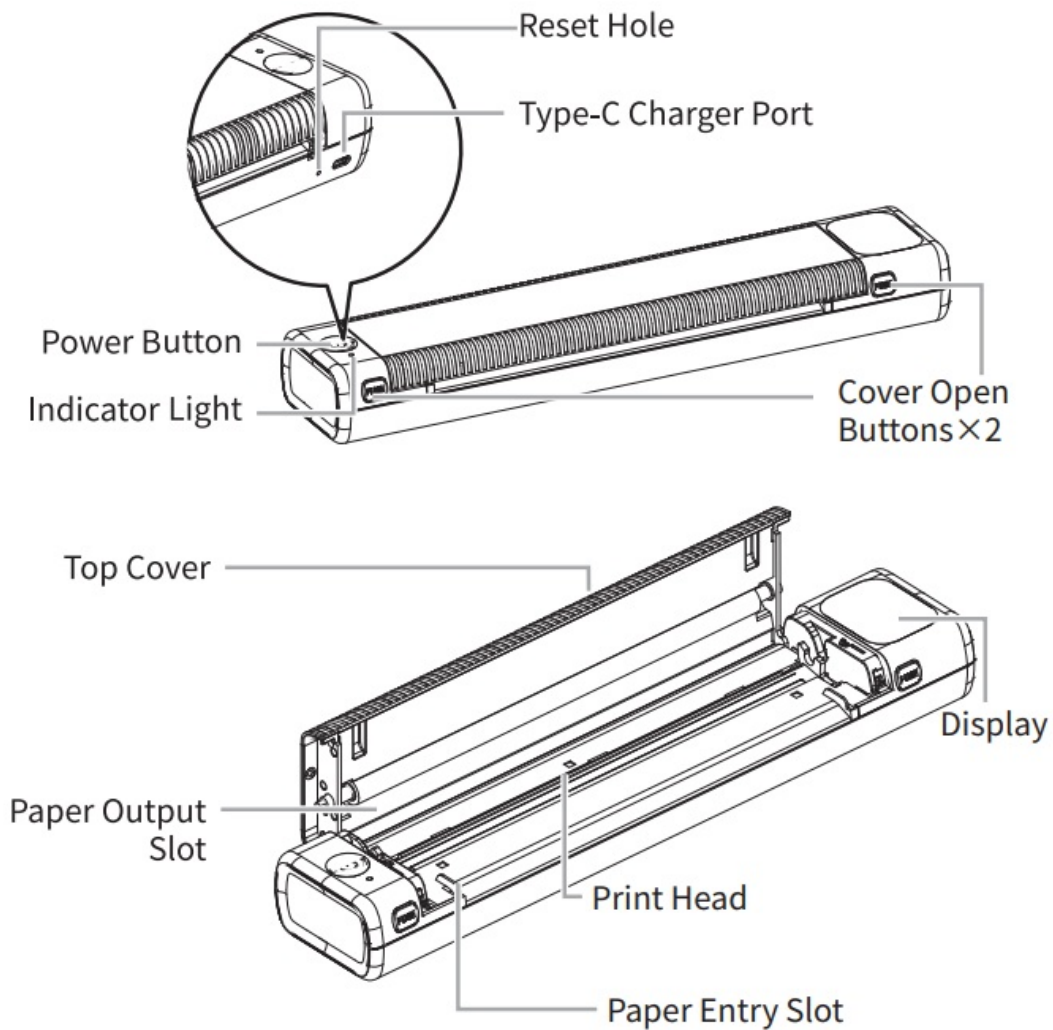
Product Introduction

Packing List



- Type-C data cable and USB adapter have been placed in the velvet bag.
- The product list may vary; please refer to the actual product for details.

Printer Parts Instruction



Getting Started

Downloading the App



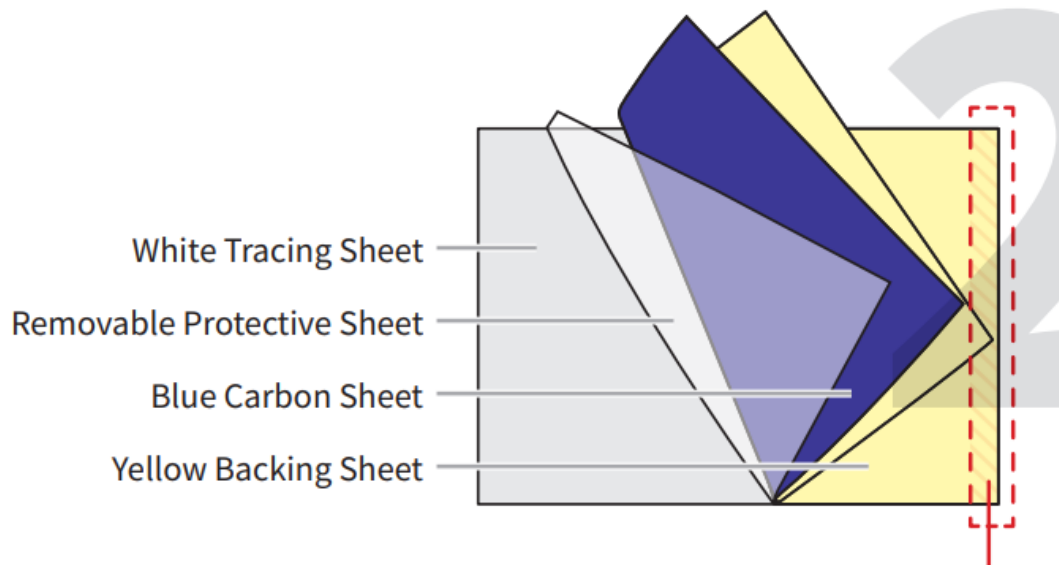
Method 1: Search for the “Phomemo” app on App Store@ or Google PlayTM for download and installation.

Method 2: Scan the QR code to download the app. You can scan the code using your cell phone’s camera, the built-in QR code scanning feature of your browser, or a dedicated QR code scanning app.



As the Safari browser on Apple devices does not support direct QR code scanning, please use your device's built-in QR code scanner instead.

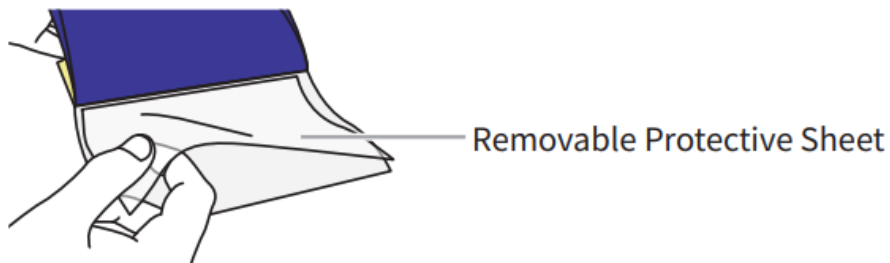
Tattoo Transfer Paper Introduction



This area is the adhesive seam at the top of the paper; please do not tear it!

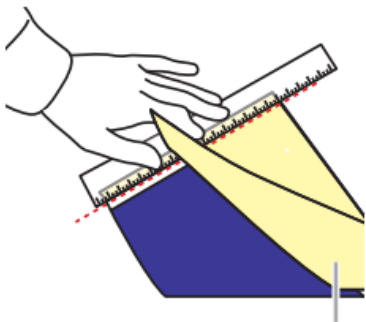
Preparation Before Use

1. Take out a piece of tattoo transfer paper, and remove its Protective Sheet.



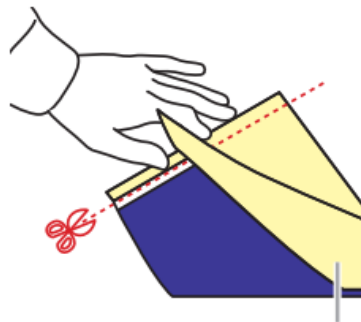
2. Trim the Yellow Backing Sheet along the top adhesive seam with a ruler or scissors.

Method 1



Yellow Backing Sheet

Method 2

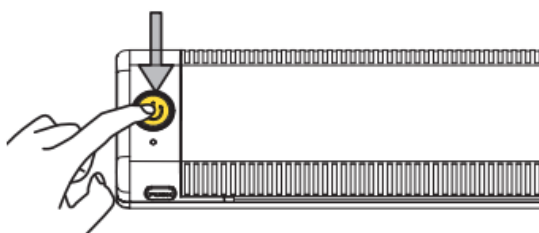


Yellow Backing Sheet

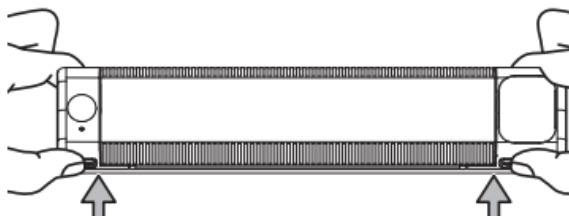
When cutting, please make sure that the adhesive area remains intact.

Paper Installation Guide Long-press the Power Button for 3 seconds until the Indicator Light is green to power up the printer.

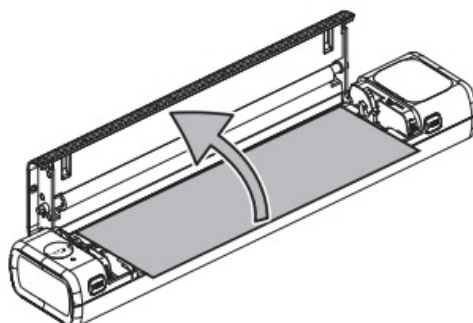
1.



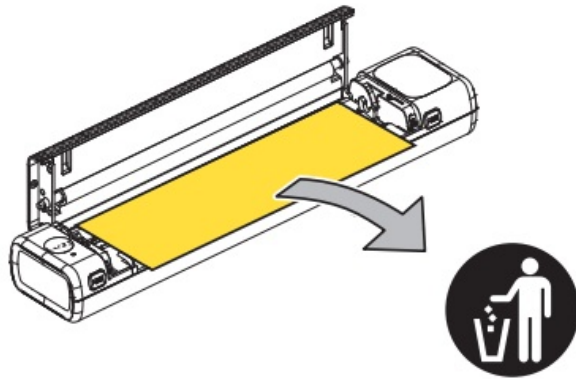
2. Simultaneously press the Cover Open Buttons with both hands.



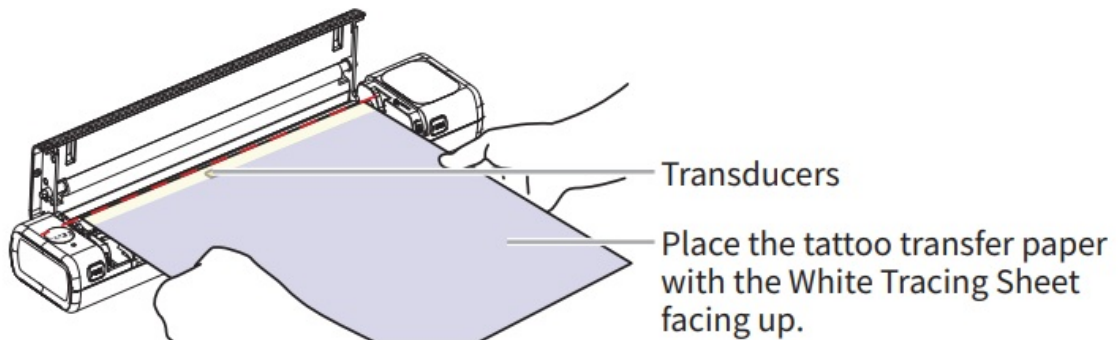
3. Open the Top Cover.



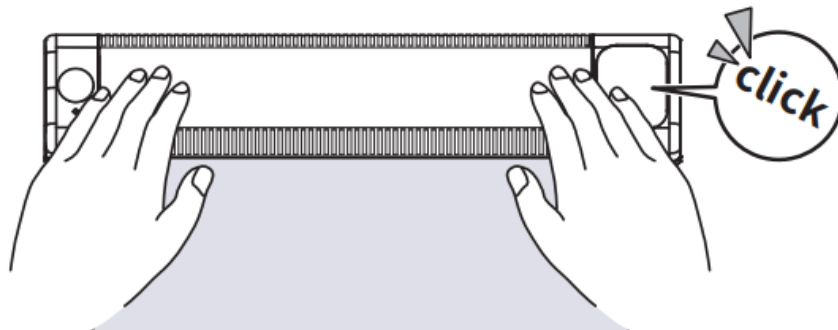
4. Remove the protective paper. er



5. Place the white tracing paper face up and flat into the printer in the direction of the paper outlet. Make sure the tattoo paper covers the sensor.



6. Put the Top Cover back down, and press down on both of its ends at the same time until you hear a click, indicating the cover is securely closed.

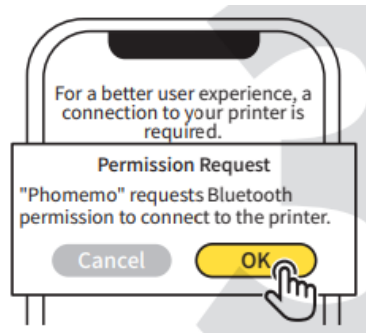


User Guide: Printing via Mobile App

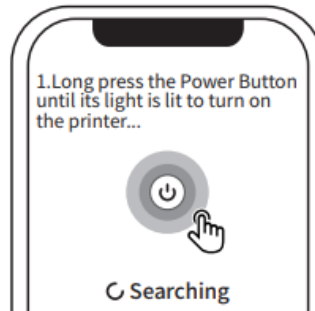
1. Open the "Phomemo" app.



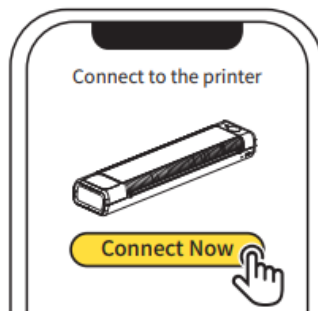
2. Grant permissions.



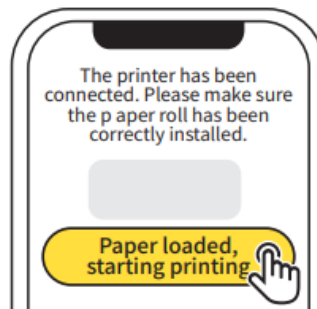
3. Wait for the printer to be searched.



4. Tap [Connect Now].



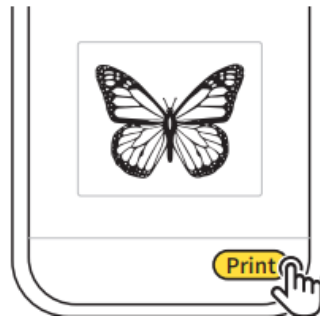
5. The printer is connected. Tap [Paper loaded, starting printing].



6. Edit your first image and tap [] after you finish editing



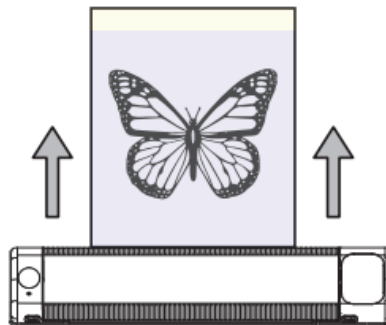
7. Confirm the preview of the image, and tap [Print].



8. Printing is completed.



9. Retrieve the printout.



10. Tear off the White Tracing Sheet for use.



The software interface is for illustration purposes only. Please refer to the actual operation page for accurate information.

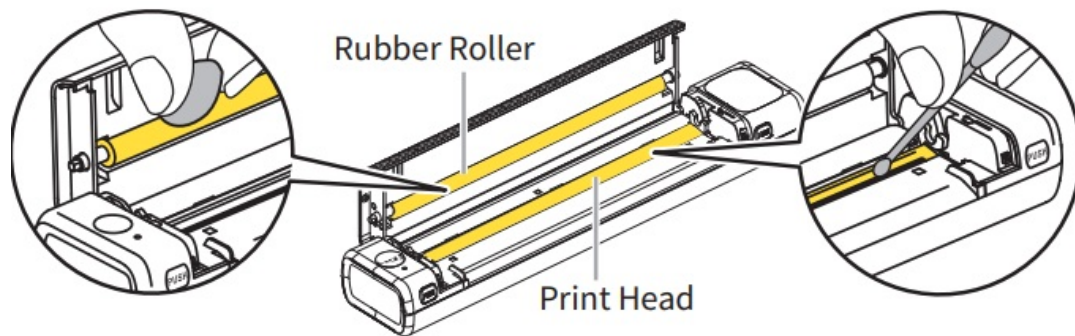
Cleaning and Maintenance

Disconnect the printer from the power supply before starting any cleaning or maintenance. If you encounter issues such as blank lines, blurry print, or missing words, it may be caused by dirt on the Print Head. Please follow these steps:

1. If you have just finished printing, wait for at least 30 minutes for the Print Head to cool

down completely.

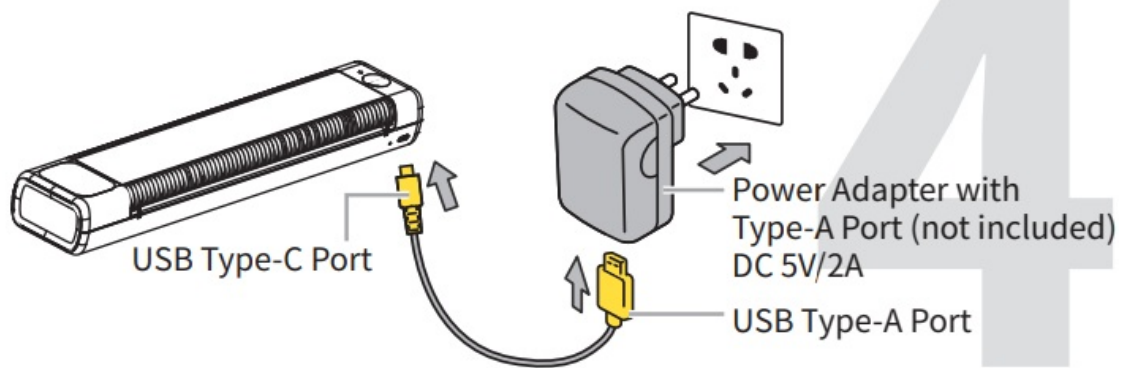
2. Use a cotton swab dipped in alcohol or a dry alcohol-soaked cotton ball to gently wipe the Rubber Roller and the Print Head left and right 5 times each, removing dust and stains from the surfaces.
3. Wait 5-10 minutes for the alcohol to evaporate completely before closing the Top Cover and completing the cleaning process. You may now continue using the printer.



Charging Instructions

1. Please prepare your power adapter (DC 5V/2A) with a Type-A port.
2. Insert the Type-C end (flat end) of the USB cable into TP81D's Type-C Charger Port and plug the Type-A end (wide end) into the Type-A port of the power adapter.
3. After connecting the printer to an outlet using the power adapter, please check the status of the Indicator Light: a light flashing alternately between red and green indicates that the printer is off, while a flashing green light signals that the printer is on.
4. To ensure quick usage, please charge the printer for at least 20 minutes. For a complete charge, wait for 4 hours or until the Indicator Light is solid green.
5. As the printer may heat up during charging, avoid placing it on materials such as cotton or linen.
6. Once the battery is fully charged, please unplug the charger promptly

Avoid using the printer while charging. Using the printer while charging may lead to reduced charging speed, compromised print quality, and shortened battery life








Additional Instructions

Button Instructions

Button Type	Operation	Function
Power Button	Long press for 3s	Power on/off
	Double press when printer is on	Print a self-test page

Indicator Light Instruction:

Status	Meaning	Advised Action
 Solid Green Light	Functioning/Fully charged	/
 Flashing Green Light	Charging	/
 Slow flashing red light	Low battery	Charge battery for 2-4h (or at least 20 min for quick usage)
 Fast flashing red light	When the battery reaches critically low level, the printer will shut down soon	
 No light after long pressing Power Button for 3s	Battery depleted	

Accessing the Detailed Online Guide

Visit tp81d.phomemo.com to access the Detailed Online Guide, video tutorials, and answers to FAQs



Warranty Card

☐ Exchange☐ Return

Customer Information	Name Sex Phone No.
	Address —
Product Information	Date of Purchase
	Order No.
	Serial No.
Return/Exchange Form	Reason for Return/Exchange

Information to User

Caution: Operating this equipment in a residential area may cause radio interference.

FCC WARNING

This device complies with part 15 of the FCC Rules. Operation is subject to the following two conditions:

1. This device may not cause harmful interference, and
2. This device must accept any interference received, including interference that may cause undesired operation.

Any changes or modifications not expressly approved by the party responsible for compliance could void the user's authority to operate the equipment.

Note: This equipment has been tested and found to comply with the limits for a Class A digital device, pursuant to part 15 of the FCC Rules. These limits are designed to provide reasonable protection against harmful interference when the equipment is operated in a commercial environment. This equipment generates, uses, and can radiate radio frequency energy and, if not installed and used instructions manual, may cause

harmful interference to radio communications. Operation of this equipment in a residential area is likely to cause harmful interference, in which case the user will be required to correct the interference at his own expense. The device has been evaluated to meet the general exposure statement. The device can be used in portable exposure conditions without restriction.

ISED NOTICE (Canada)

This device contains licence-exempt transmitter(s)/receiver(s) that comply with Innovation, Science and Economic Development Canada's licence-exempt RSS(s). Operation is subject to the following two conditions:

1. This device may not cause interference.
2. This device must accept any interference, including interference that may cause undesired operation of the device.

ISED RF exposure statement:

The device has been evaluated to meet the general ISED RF exposure requirement. The device can be used in portable exposure conditions without restriction.

BATTERIES

1. Disposal of a battery into a fire or a hot oven, or mechanically crushing or cutting a battery, can result in an explosion.
2. Leaving a battery in an extremely high temperature environment can result in an explosion or the leakage of flammable liquid or gas.
3. The battery is subjected to extremely low air pressure, which may result in an explosion or the leakage of flammable liquid or gas.
4. Replacement of a battery with an incorrect type can result in an explosion or the leakage of flammable liquid or gas.
5. The battery cannot be subjected to extremely high or low temperatures, low air pressure at high altitude during use, storage, or transportation.

WARNING

Please pay attention to electrical safety. Do not disassemble, crush, or puncture the

battery. This product is not a toy.

Special Notes

The company assumes full responsibility for the revision and explanation of this manual, exercising utmost diligence to guarantee its accuracy. Nevertheless, please note that any technical improvements to the product may not be separately notified, and that the images of the product, accessories, software interfaces, etc. This manual serves solely as an illustration and a reference. Due to product updates and upgrades, the actual product may vary slightly from the images. Please refer to the physical product for accurate representations.

FAQ

Q: Can I use the printer while charging?

A: Avoid using the printer while charging to prevent reduced charging speed, compromised print quality, and shortened battery life.

Documents / Resources

	QUIN TP81D Portable Printer [pdf] User Guide 2ASRB-TP81D, 2ASRBTP81D, tp81d, TP81D Portable Printer, TP81D, Portable Printer, Printer
--	--

References

- [User Manual](#)

2ASRB-TP81D, 2ASRBTP81D, Portable Printer, Printer, QUIN, tp81d, TP81D Portable
QUIN Printer

Leave a comment

Your email address will not be published. Required fields are marked *

Comment *

Name

Email

Website

☐ Save my name, email, and website in this browser for the next time I comment.

Post Comment

Search:

e.g. whirlpool wrf535swhz

Search

[Manuals+](#) | [Upload](#) | [Deep Search](#) | [Privacy Policy](#) | [@manuals.plus](#) | [YouTube](#)

This website is an independent publication and is neither affiliated with nor endorsed by any of the trademark owners. The "Bluetooth®" word mark and logos are registered trademarks owned by Bluetooth SIG, Inc. The "Wi-Fi®" word mark and logos are registered trademarks owned by the Wi-Fi Alliance. Any use of these marks on this website does not imply any affiliation with or endorsement.