



Series 4 QuickLink S Base Pack for Single and Double Sinks Installation Guide

[Home](#) » [QUICKLINK](#) » Series 4 QuickLink S Base Pack for Single and Double Sinks Installation Guide 

Contents

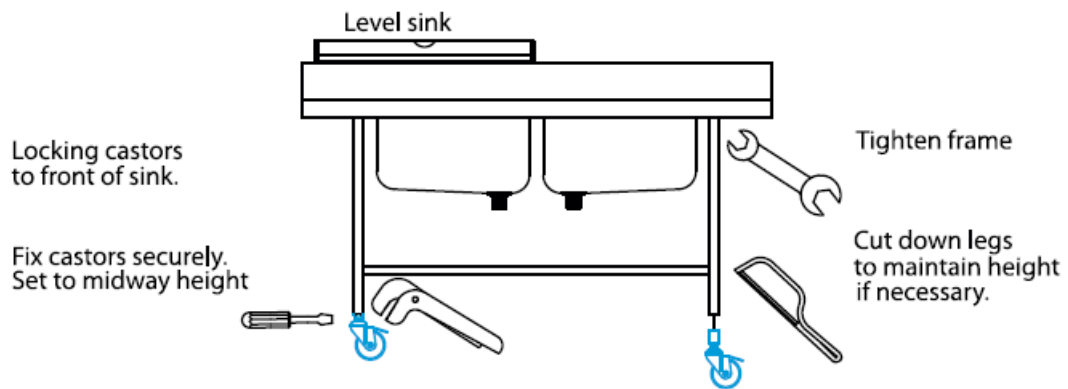
- [1 Series 4 QuickLink S Base Pack for Single and Double Sinks](#)
- [2 Overview](#)
- [3 INSTALL INSTRUCTIONS](#)
- [4 Contact Information](#)
- [5 Documents / Resources](#)
- [6 Related Posts](#)

QUICKLINK
manufactured by **MECHLINE**

Series 4 QuickLink S Base Pack for Single and Double Sinks

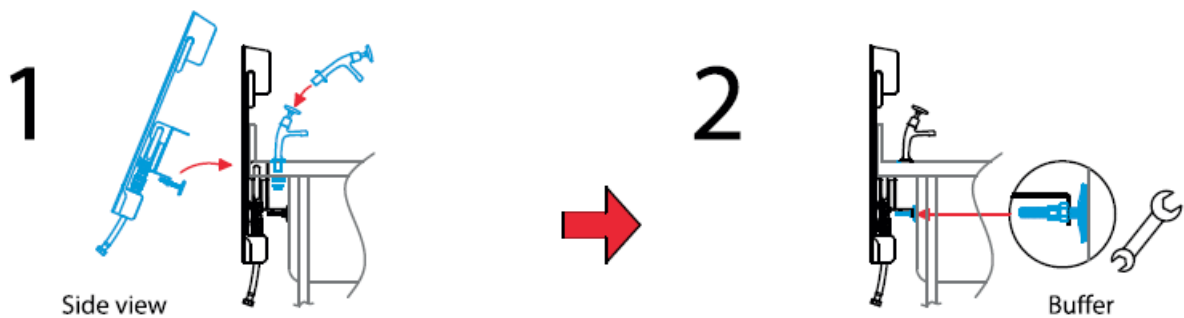


Overview

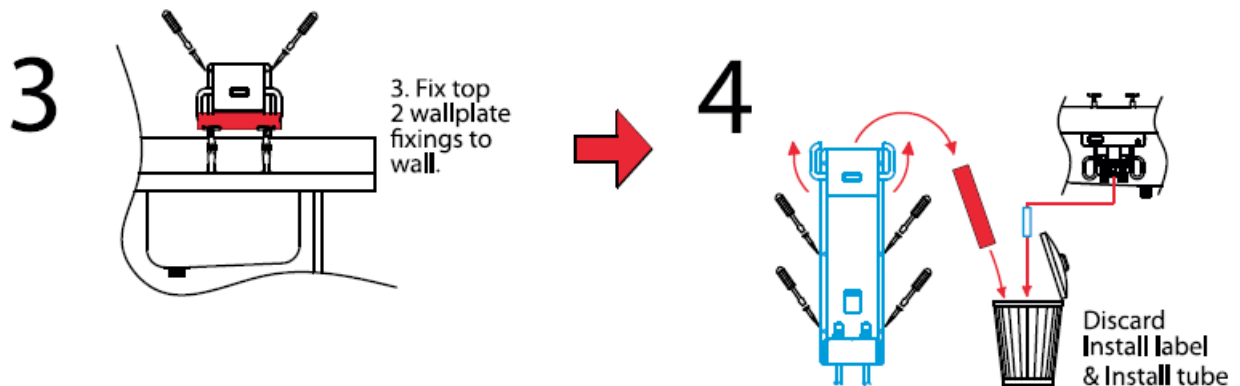


INSTALL INSTRUCTIONS

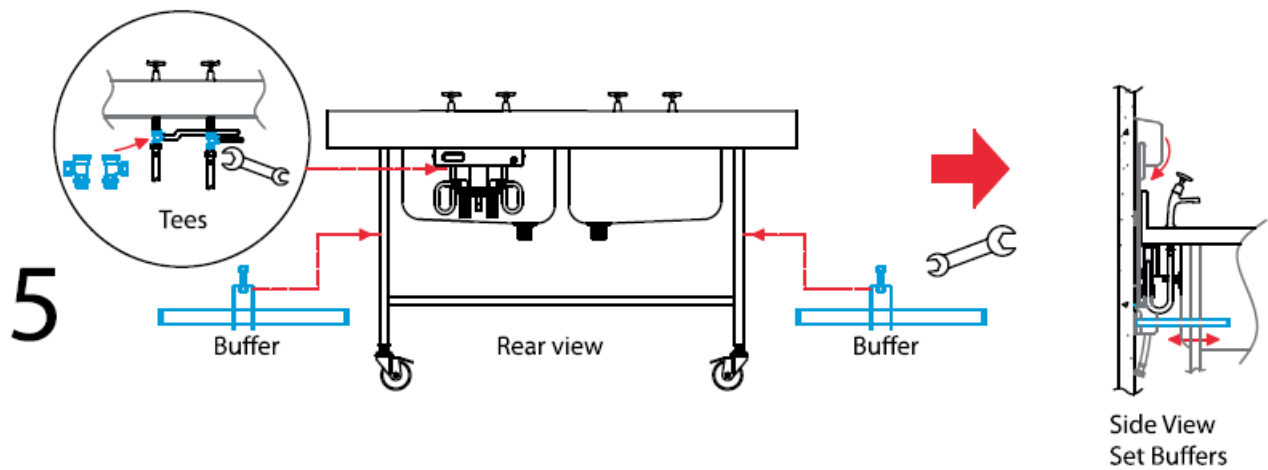
1. Fit sink bracket and wall plate to sink. Use the tap spanner on the tap back nuts to lock it in place.
2. Lock buffer against sink bowl.



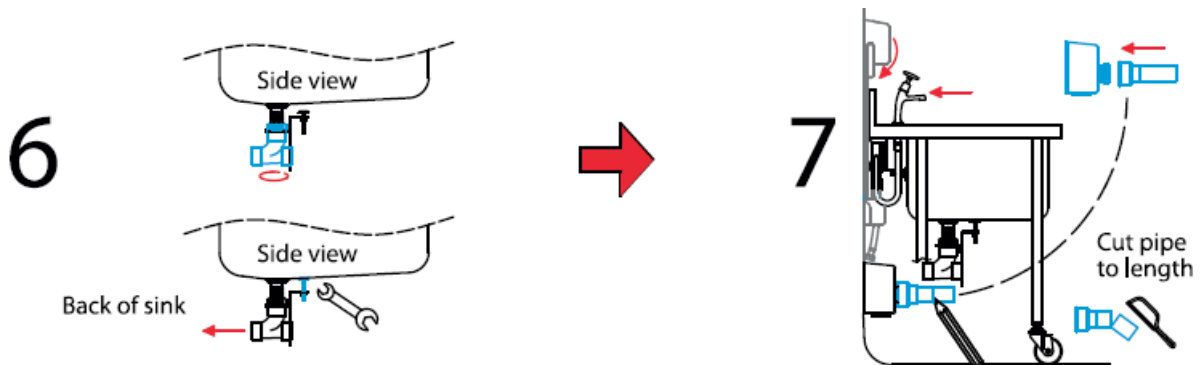
3. Fix the top 2 wall plate fixings to the wall.
4. Remove the installation label. Lift wall plate handles and remove the sink. The install tube will automatically eject from the sink bracket. Fix the final 4 wall plate fixings.



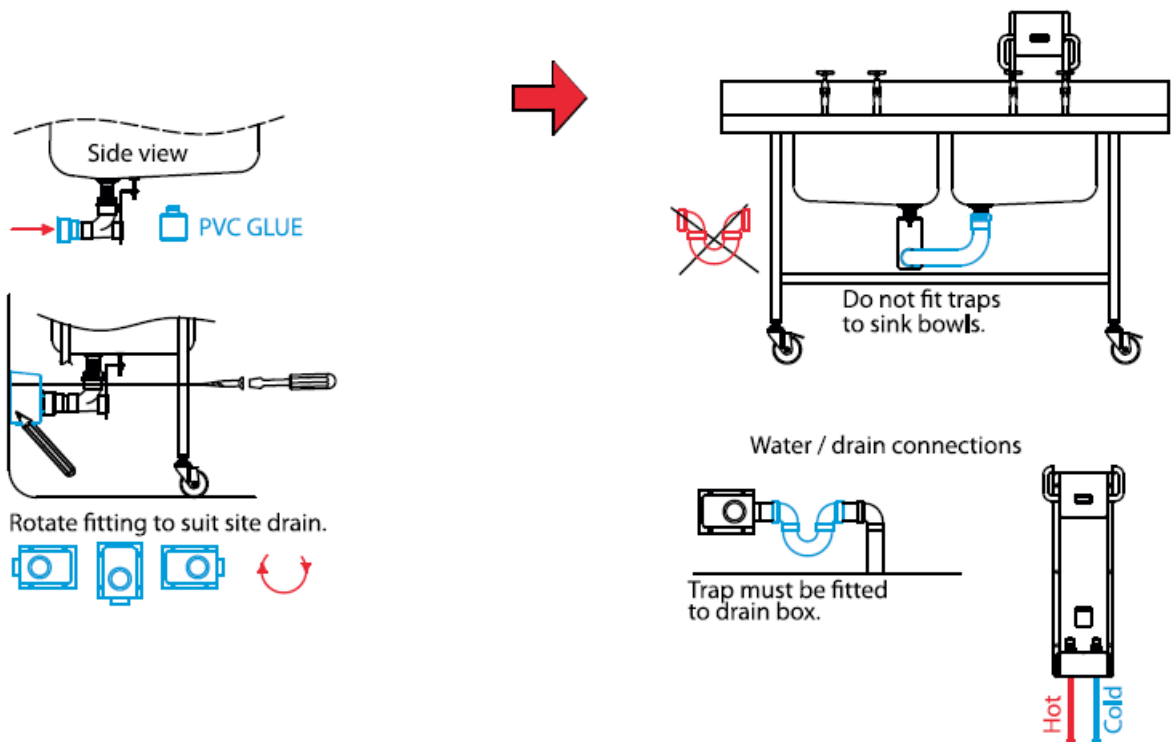
5. Connect water hoses to tap tails. Fit-supplied tees between tap tails and water hoses to branch off to other taps if required. Fit 2x buffers to sink legs. Connect the sink to the wall plate and set buffers against the wall as shown.



6. Apply jointing compound/tape tighten drain tee onto sink boss so that the outlet faces the rear of the sink.3
7. Push the tapered pipe into the drain fitting as far as it will go. Connect the sink to the wallplate



8. Glue tapered pipe into a tee, with the shield end facing the wall. Connect sink back to wallplate. Mark drain fitting fixing holes and fixing to the wall.
9. Interconnect drains into the open end of the tee or cap.



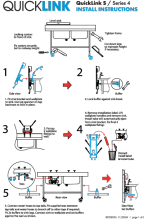
Ensure all pipework is flushed clear of debris. Service valves should be fitted to supplies. Max. recommended water pressure 3 bar (44psi) Earth bonding connection required. Installation must comply with local authority requirements.

Contact Information

MECHLINE DEVELOPMENTS LIMITED

- **Telephone:** +44 (0) 1908 261511
- **Email:** info@mechline.com.
- **Web:** www.mechline.com.

Documents / Resources

	<p>QUICKLINK Series 4 QuickLink S Base Pack for Single and Double Sinks [pdf] Installation Guide</p> <p>QUICKLINK-S, Series 4 QuickLink S Base Pack for Single and Double Sinks, Series 4, QuickLink S Base Pack for Single and Double Sinks</p>
---	--

[Manuals+](#)