



## S4-QUICKLINK-D Single and Double Sinks Instruction Manual

[Home](#) » [QUICKLINK](#) » S4-QUICKLINK-D Single and Double Sinks Instruction Manual 

S4-QUICKLINK-D Single and Double Sinks



#### Contents

[1 INSTALLATIONS INSTRUCTIONS](#)

[2 Documents / Resources](#)

[3 Related Posts](#)

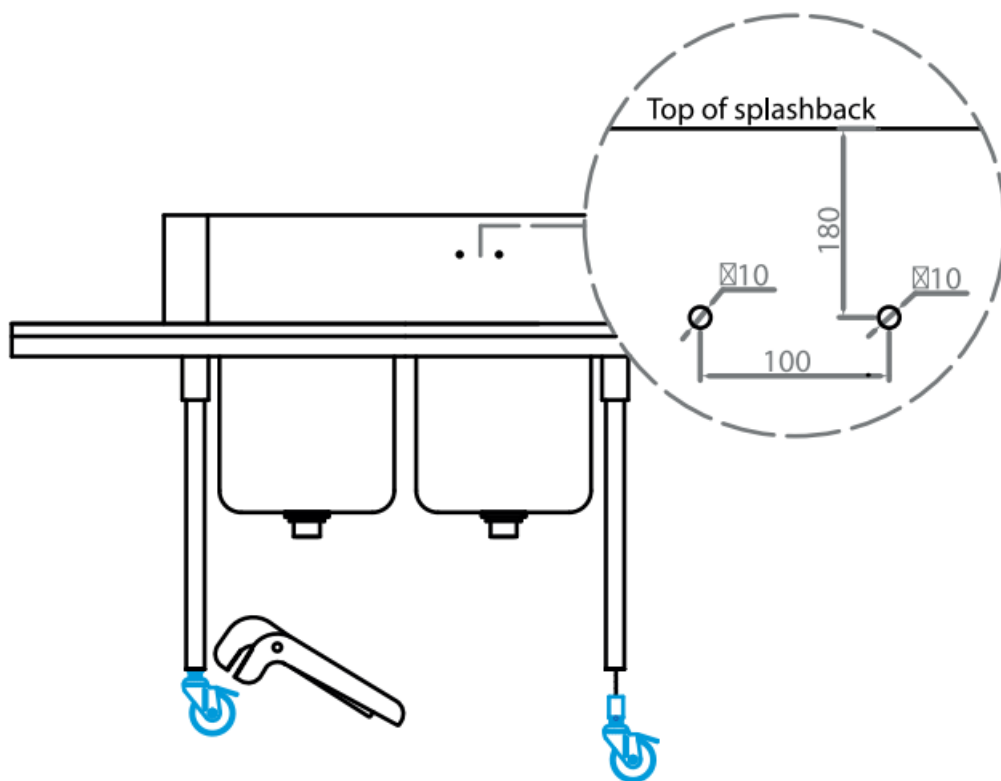
## INSTALLATIONS INSTRUCTIONS

Mark out and drill the splashback at the required position.

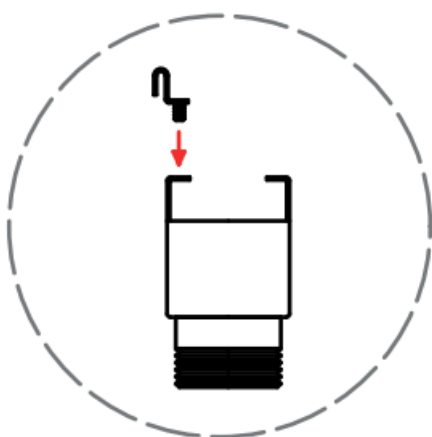
### Level tabling



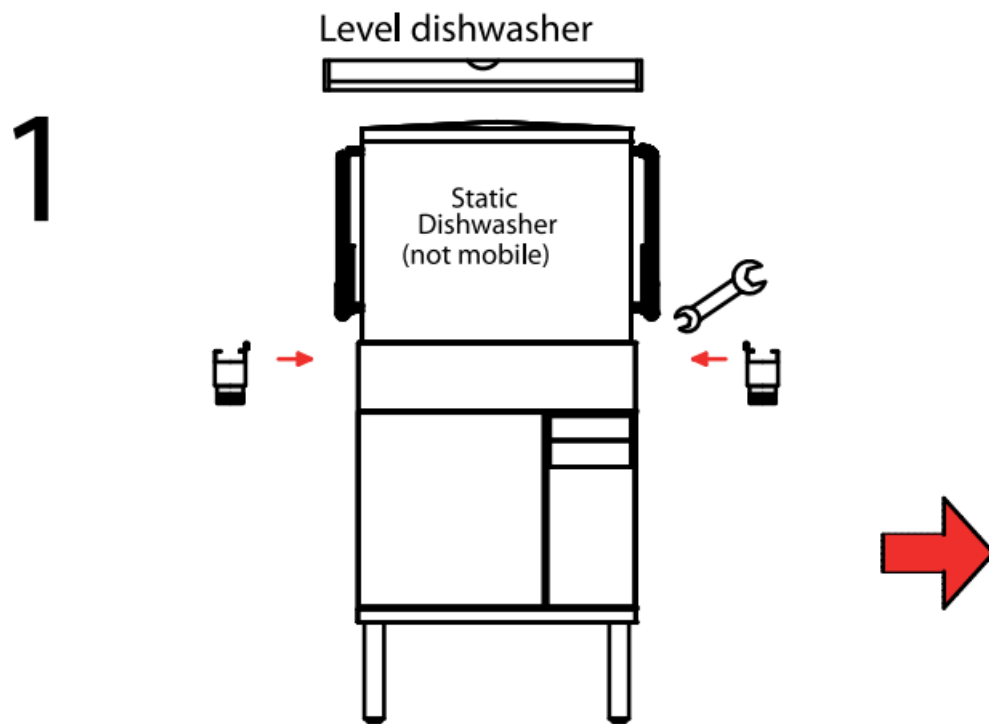
Set tabling castors to drip tray height.



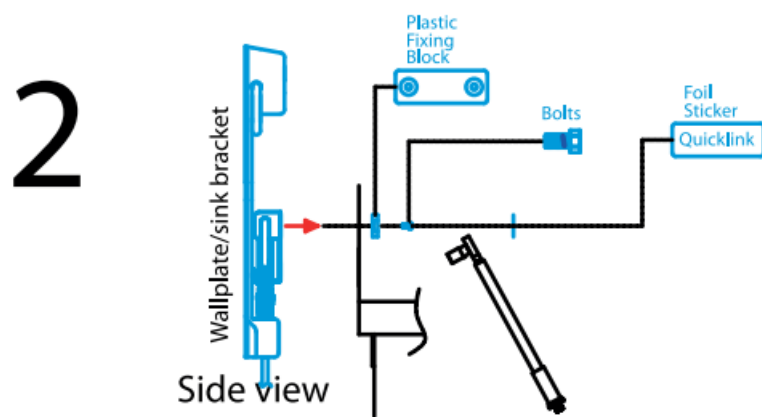
Bolt fixing bracket(s) to drip trays



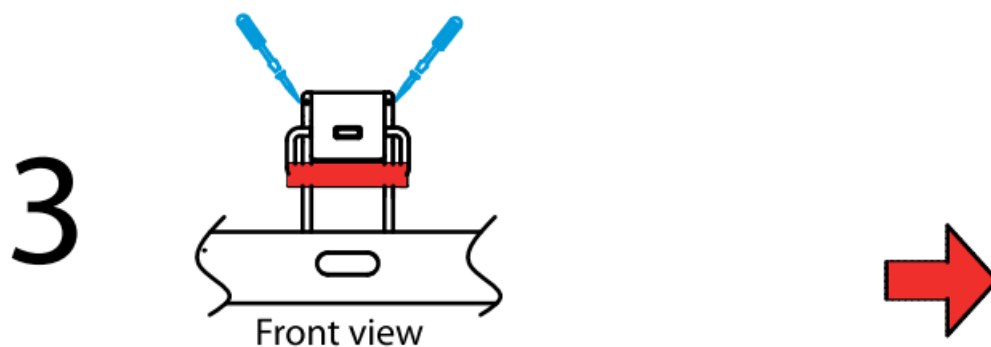
1. Bolt drip tray(s) to dishwasher



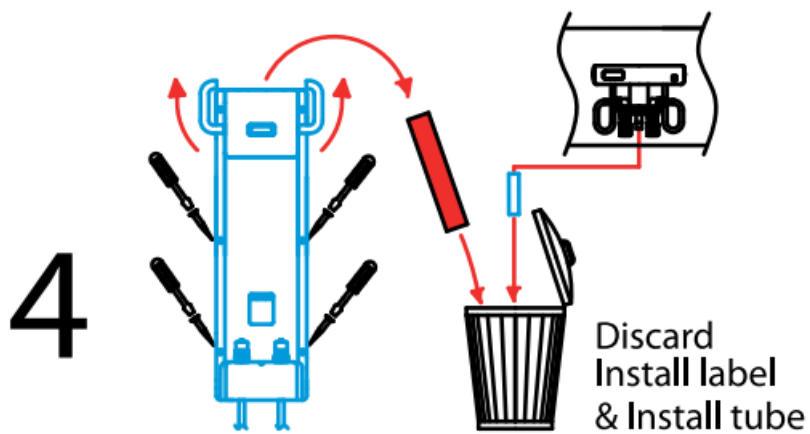
2. Bolt wall plate/ sink bracket to rear of splash back using fixing block supplied.



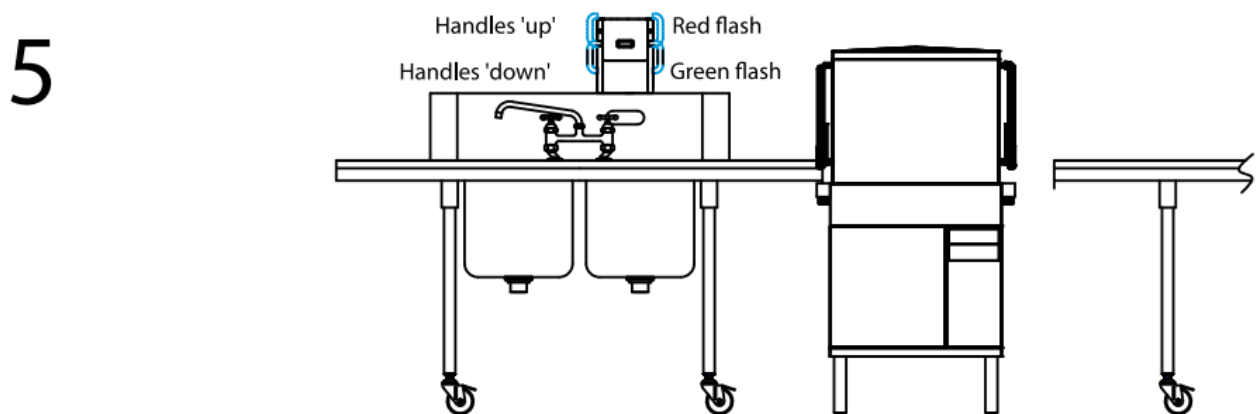
3. Level wall plate. fix top 2 wallplate fixings to wall.



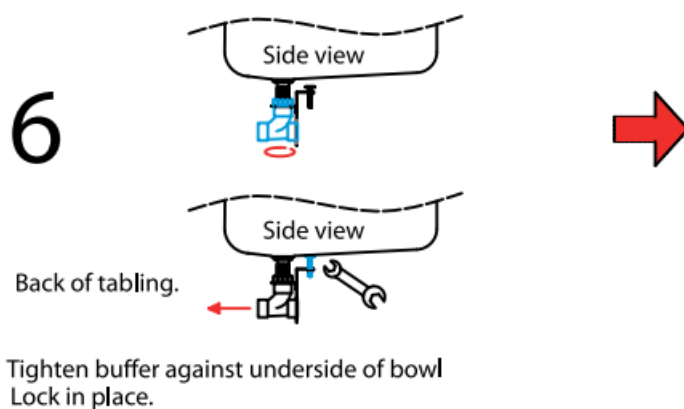
4. Disconnect the wallplate. Remove tabling and fix wall plate securely to wall.



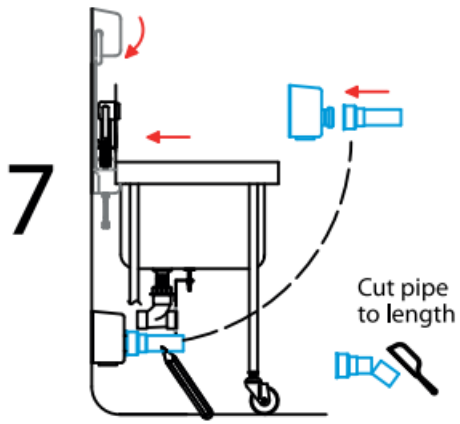
5. Connect water supplies from sink bracket to pre-rinse/ taps.



6. Apply jointing compound/ tape tighten drain tee onto sink boss so that outlet faces rear of tabling.



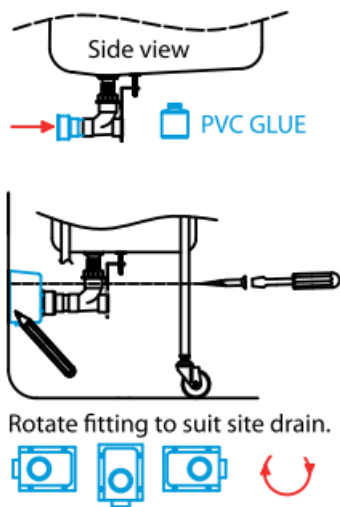
7. Push tapered pipe into drain fitting as far as it will go. Connect the tabling to the wall plate.



Offer drain fitting against wall.  
Mark cut length - allow for socket.

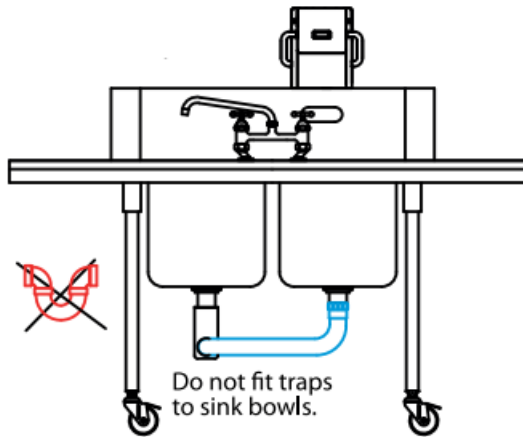
8. Glue tapered pipe into tee, with shield end facing wall.  
Connect tabling back to wall plate. Mark drain fitting fixing holes and fix to wall.

# 8

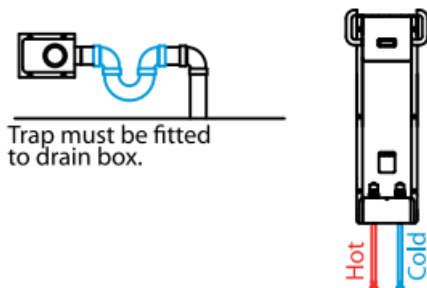


9. Interconnect drains into open and of tee or cap

# 9



Water I drain connections



Ensure all pipework is flushed clear of debris. Service valves should be fitted to supplies. Max. recommended water pressure 3 bar (44psi) Earth bonding connection required. Installation must comply with local authority requirements.

manufactured by **MECHLINE**

**MECHLINE DEVELOPMENTS LIMITED I**

Telephone: +44 (0) 1908 261511 | Email: [info@mechline.com](mailto:info@mechline.com) | Web: [www.mechline.com](http://www.mechline.com)

# QUICKLINK

## Documents / Resources

	<p><a href="#">QUICKLINK S4-QUICKLINK-D Single and Double Sinks</a> [pdf] Instruction Manual S4-QUICKLINK-D Single and Double Sinks, S4-QUICKLINK-D, Single and Double Sinks, Double Sinks</p>
--	--