

QUICK STEP NatureTEK Plus Durable Floor Covering Installation Guide

[Home](#) » [Quick-Step](#) » QUICK STEP NatureTEK Plus Durable Floor Covering Installation Guide 

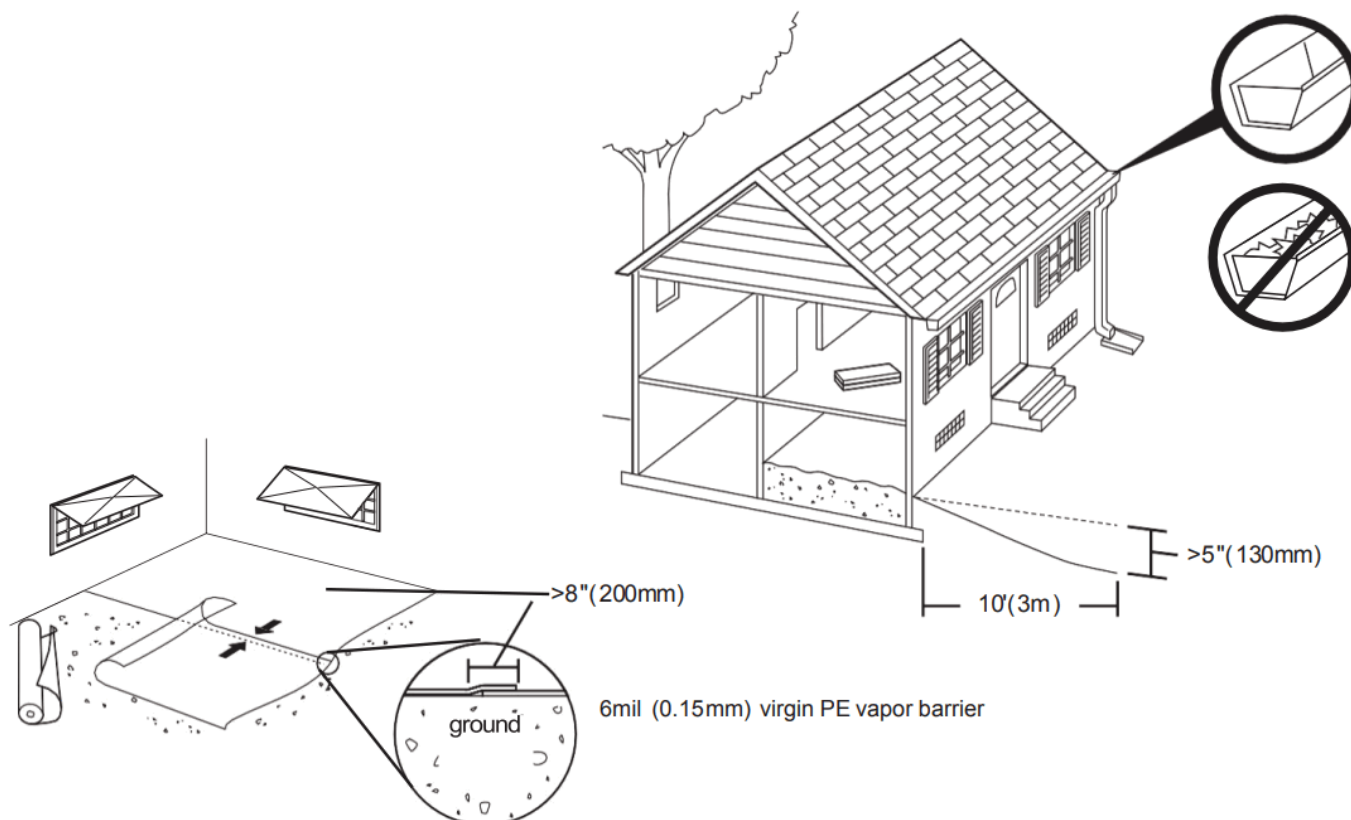


Contents

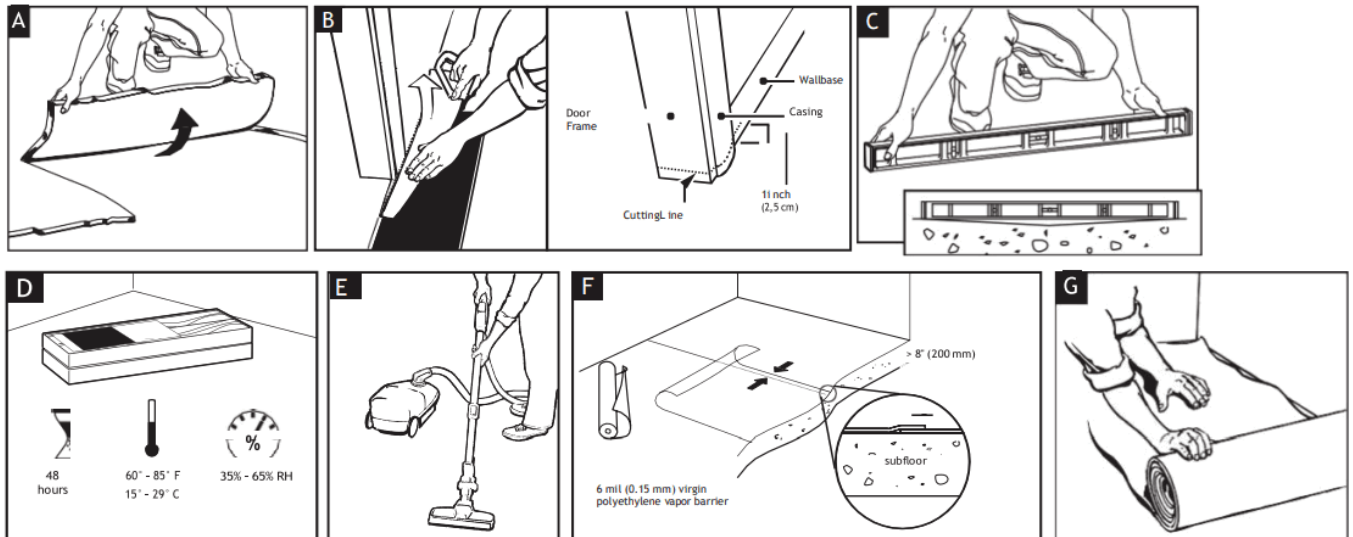
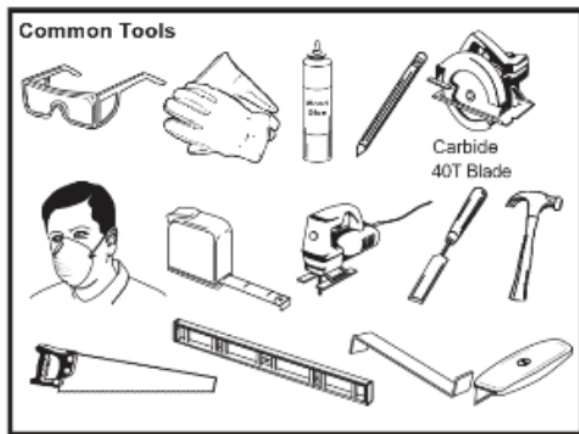
- [1 Jobsite Requirements](#)
- [2 Flooring Installation](#)
- [3 Documents / Resources](#)
- [4 Related Posts](#)

Jobsite Requirements

NatureTEK Plus is a durable floor covering, not intended as structural material. NatureTEK Plus requires a clean, dry, secure subfloor that meets building codes. The following requirements are not intended to supersede federal, state or local building codes, but as with many other interior finish products, may require modifying existing structural components for successful installation. Owner assumes responsibility for compliance with all building codes. NatureTEK Plus flooring is suitable for use in climate controlled (35-65% RH and 60-85° F) indoor installations only and should not be installed in rooms with floor drains or sump pumps. NatureTEK Plus floor can be installed above, on or below grade. A moisture test is strongly recommended to determine if high moisture exists in the subfloor. When using a calcium chloride moisture test for concrete subfloors (ASTM F1869), values must be ≤ 5 lbs/1000ft²/24 hr or $<80\%$ RH with an in-situ probe (ASTM F2170). Moisture readings of wood subfloors must be $\leq 12\%$. Acceptable job site conditions, including relative humidity and subfloor moisture conditions, must be maintained throughout the lifetime of the flooring. NatureTEK Plus flooring is installed as a floating floor and requires the use of T-moldings in doorways less than 32" (0.81m) or if the installation changes directions through the doorway (regardless of doorway size) and in rooms 50 feet (15.24m) or larger in length or width. Floor movement must not be constrained by glue, nails, screws, hardware or other fixed obstructions. This product must be installed in accordance with these installation instructions.



- A.** Remove carpet and padding. Also remove any wood flooring installed on concrete. Do not remove products unless they are asbestos-free.
- B.** Undercut door frame and wall base. Slide the flooring at least 1/4" underneath the door frame and wall base. Also leave a concealed 3/8" minimum expansion space under each.
- C.** Sand peaks in subfloor and fill depressions with floor leveling compound to ensure floor flatness is within 3/16" per 10-foot span.
- D.** Acclimate unopened product before installation. If there is no time for acclimation, there should be no more than a difference of 25° F and 20% relative humidity between the stocking/transportation environment of the flooring and the final installation environment of the flooring.
- E.** Clean debris from subfloor before installation.
- F.** For concrete subfloors, install a 6-mil polyethylene vapor barrier with overlapped seams of 8" or more.
- G.** For planks without attached underlayment, install over single layer of underlayment no more than 2.0 mm thick, as appropriate for NatureTEK Plus floors.



Flooring Installation

1. Before installing flooring, read all installation instructions. Any questions, please call Technical Services at 800.833.6954.
2. Inspect each plank. Floor should be installed blending planks from several cartons at the same time to ensure good color and shade mixture throughout the installation.
3. For the first row along straight walls, remove the tongue on all long side joints and on the short side of the first plank only.
4. For uneven walls, trace contour on tongue side of plank and cut.
5. Assemble the first row tongue side toward wall. Insert the end tongue into the end groove and rotate downward to assemble. Keep the planks aligned and the joints closed.
6. Align thick side of two spacers to equal 3/8" to maintain consistent perimeter expansion space.
7. Provide a 3/8" space for expansion on all sides. First piece must be at least 8" long. Start new rows with pieces trimmed from previous row. Ensure a minimum 8-12" joint stagger.
8. At a slight angle, insert the tongue of plank 2 into the groove of plank 1 until the NatureTEK Plus edges meet, and then rotate down until the joints lock.
9. Join the short end of the plank first. There will be a gap on the long side joints when the plank is rotated down.
10. Raise the outside edge of the plank upward approximately 1". Maintain this angle as you push the plank in until the NatureTEK Plus edges meet. Rotate downward on the plank until the joint locks. Repeat these steps to complete the installation.

Installation Tip: Place a carton of planks across the end of the row being installed to keep installed planks in

place during installation.

11. Alternate Tap Method: Align the tongues into the grooves of the long and short sides of the planks. Install the long side first with a tapping block by tapping lightly along the long side until the joint is closed tightly. Then tap the end using the tapping block into a locked position. Note: Uneven tapping or use of excessive force may damage the joint.
12. Ensure there will be a 3/8" gap (after the joint is closed) to the wall for expansion.
13. For the last row, align the plank to be used on top of the second to last row. Using a full width plank as a spacer, trace wall contour and cut plank.
14. For the last row, install the long side tongue into the groove with the end joint aligned. Using a pull bar and hammer, work evenly along the length of the plank and lightly tap the joint closed.
15. After tapping the long side joint closed, tap the short side closed, using a tapping block or a pull bar.
16. Slide plank under pre-cut door frame.
17. Tap the long side joint closed first. Then tap the end joint closed.

Installation Around Fixed Objects (Such as Pipes)

18. Allow 3/8" expansion space around pipes or other fixed objects.

Finishing the Installation

19. Remove all spacers.
20. The entire perimeter of the installation must be sealed with the WetProtect® molding system in accordance with the installation instructions. For sections where the WetProtect molding system cannot be used, seal the perimeter with 100% silicone sealant, as follows. DO NOT use acrylic sealant.
 - First fill all expansion spaces with 3/8" compressible PE foam backer rod and cover with silicone sealant.
 - Prior to installing the moldings, apply silicone sealant to the portion of the molding or transition that will contact directly with flooring surface.
 - Install moldings and immediately wipe away any excess silicone sealant.
 - Apply silicone at connections to doorframes or any other fixed objects.

For detailed product specifications, please contact Technical Services at 888-387-9881.

For service under this warranty, please notify your retailer in writing. Be sure to describe the specific problem and to include a copy of your invoice. Your retailer will take appropriate action, including notifying the manufacturer, if necessary.

Quick-Step® is manufactured by:

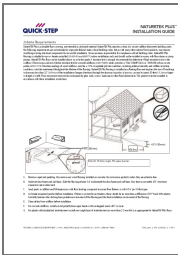
Unilin North America LLC

550 Cloniger Drive

Thomasville, NC 27360

TECHNICAL SERVICES DEPARTMENT
196 S. INDUSTRIAL BLVD. CALHOUN, GA 30701
888-387-9881
1344_2021 | MW | 09/2021

Documents / Resources



QUICK STEP NatureTEK Plus Durable Floor Covering [pdf] Installation Guide
NatureTEK Plus Durable Floor Covering, NatureTEK Plus, Durable Floor Covering, Floor Covering, Covering

Manuals+.