

QUECTEL MC25 QFlash GSM/GPRS/GNSS Module User Guide

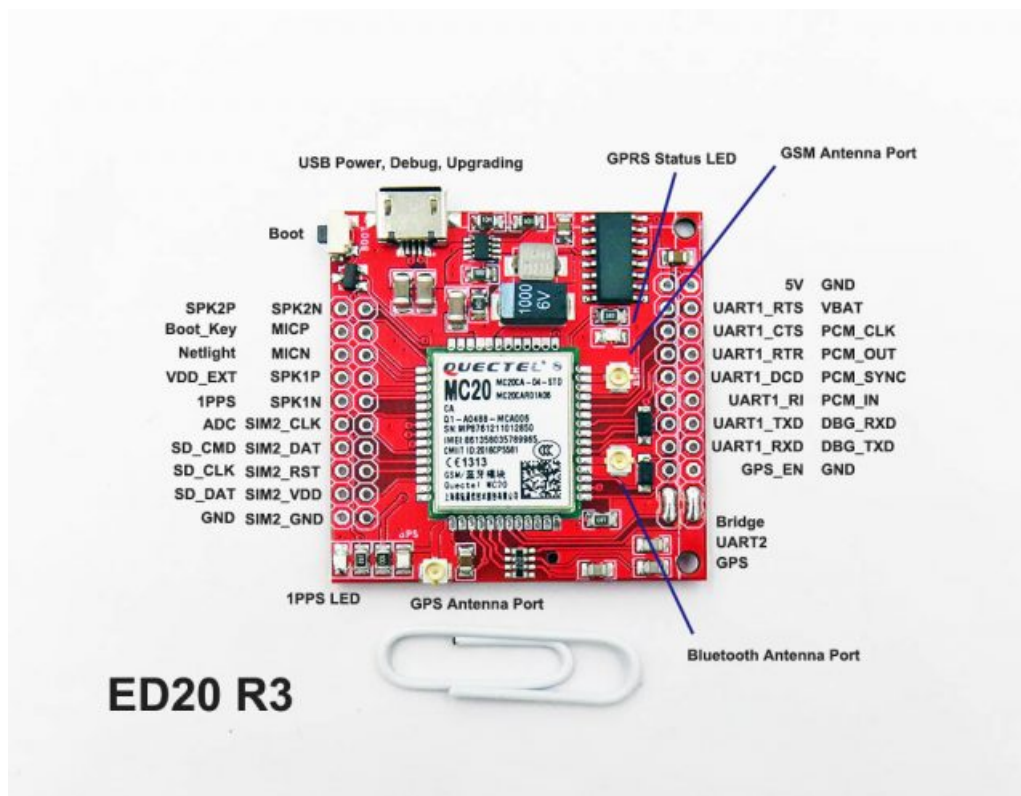
[Home](#) » [QUECTEL](#) » **QUECTEL MC25 QFlash GSM/GPRS/GNSS Module User Guide** 

Contents

- 1 QUECTEL MC25 QFlash GSM/GPRS/GNSS Module
- 2 Introduction
- 3 OpenCPU Firmware Upgrade
 - 3.1 Load Firmware Files
- 4 Abnormalities
- 5 Appendix A Reference
- 6 Documents / Resources
- 7 Related Posts



QUECTEL MC25 QFlash GSM/GPRS/GNSS Module



Introduction

This document mainly introduces the “QFlash” tool offered by Quectel and how to use it to upgrade OpenCPU firmware.

This document is applicable to the following modules:

- MC25-OpenCPU
- M25-OpenCPU
- M56-R-OpenCPU

OS and Version

The flash tool can be run on a PC without installation if the OS is among the ones listed below:

- Windows 7
- Windows 10

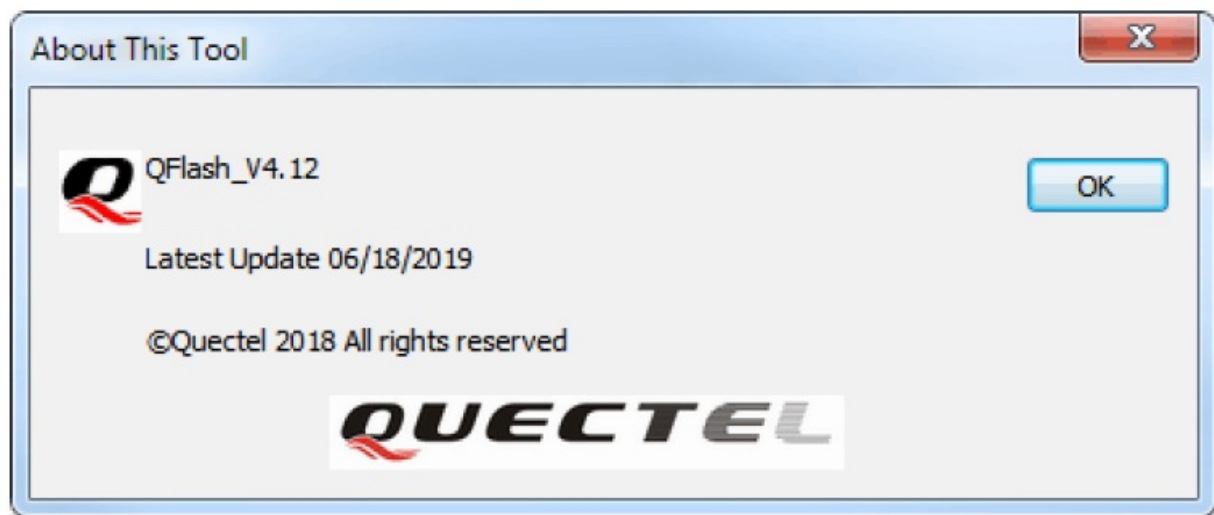
Any newer version of the tool will be informed and provided by Quectel in advance.

NOTES

1. In Windows 10, please start QFlash.exe by right-clicking the icon and selecting “Run as administrator”.
2. The paths where the tool and firmware are stored should NOT contain any space, and English characters are preferred.

About QFlash Tool

The Q Flash tool developed by Quectel is shown as below (e.g. QFlash_V4.12).



OpenCPU Firmware Upgrade

Procedure

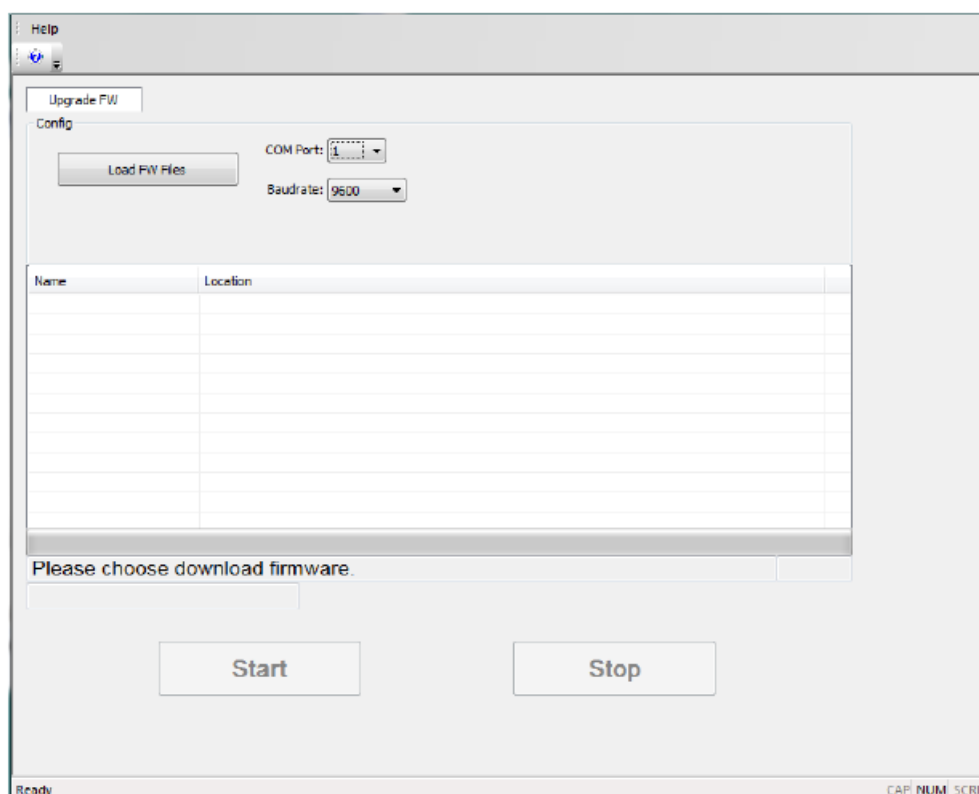
This chapter introduces how to upgrade OpenCPU firmware by using the QFlash tool (QFlash_V4.12 is taken for example). Generally, the following three steps can be applied:

- Step 1: Configure the parameters of serial port.
- Step 2: Load firmware files (core or App firmware).
- Step 3: Upgrade the firmware (core or App firmware).

The following sections describe the details about how to use the tool to upgrade firmware.

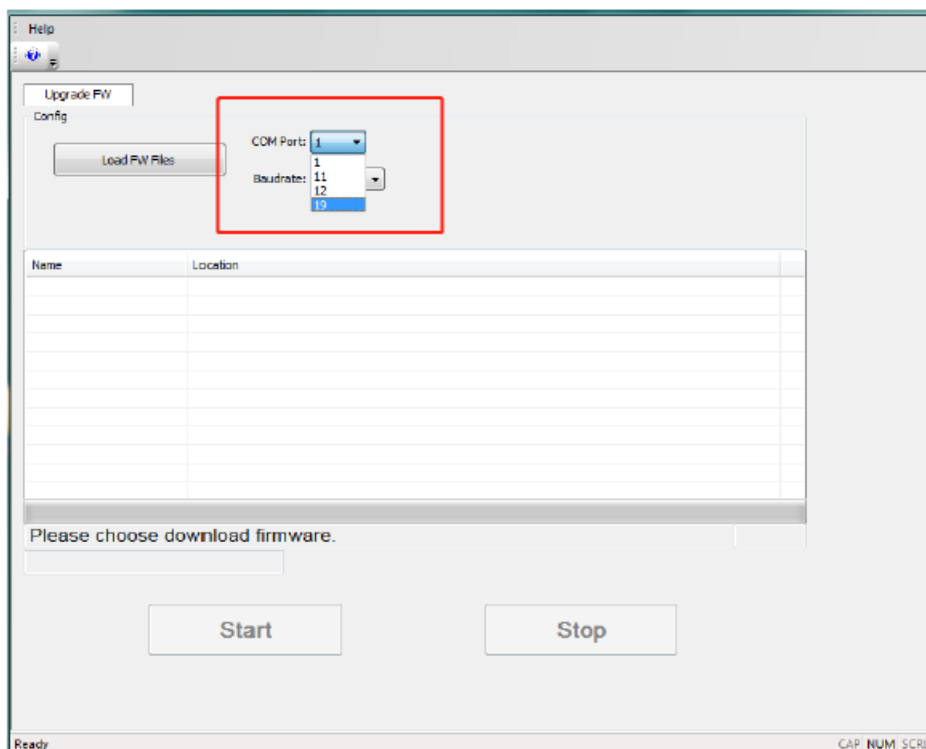
Configure Serial Port

After the QFlash tool is started, the main interface is shown as below.



Set COM Port

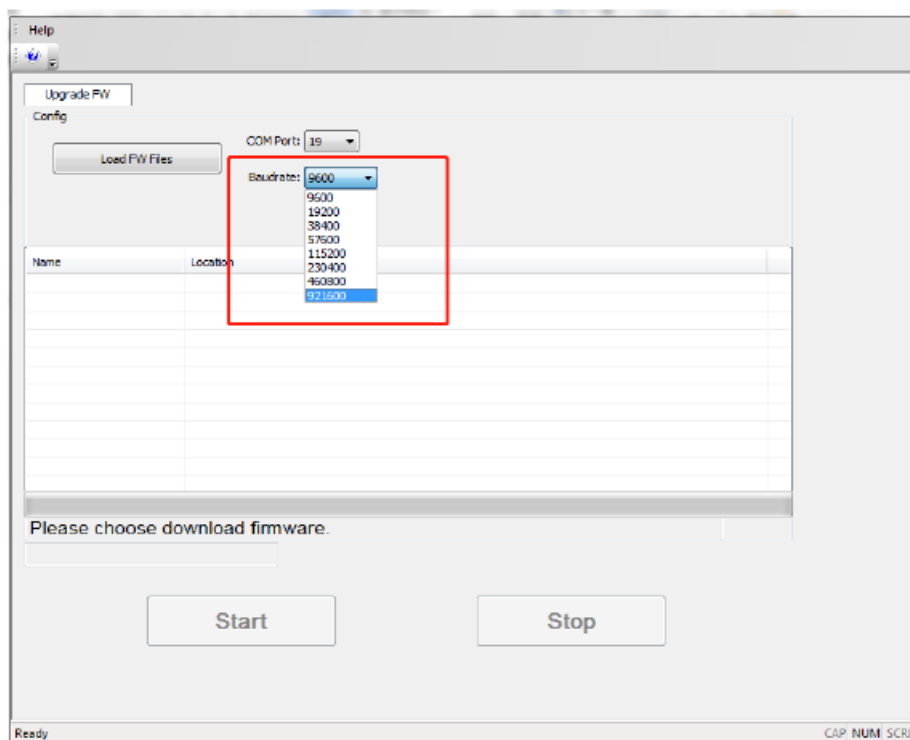
Click the “COM Port” dropdown list to select the serial port that corresponds to the debug port of module, through which the firmware will be upgraded.



Set Baud Rates

Click the “Baudrate” dropdown list and choose an appropriate baud rate.

For MC25&M25&M56-R-OpenCPU, please select “921600”, as shown in the following figure.

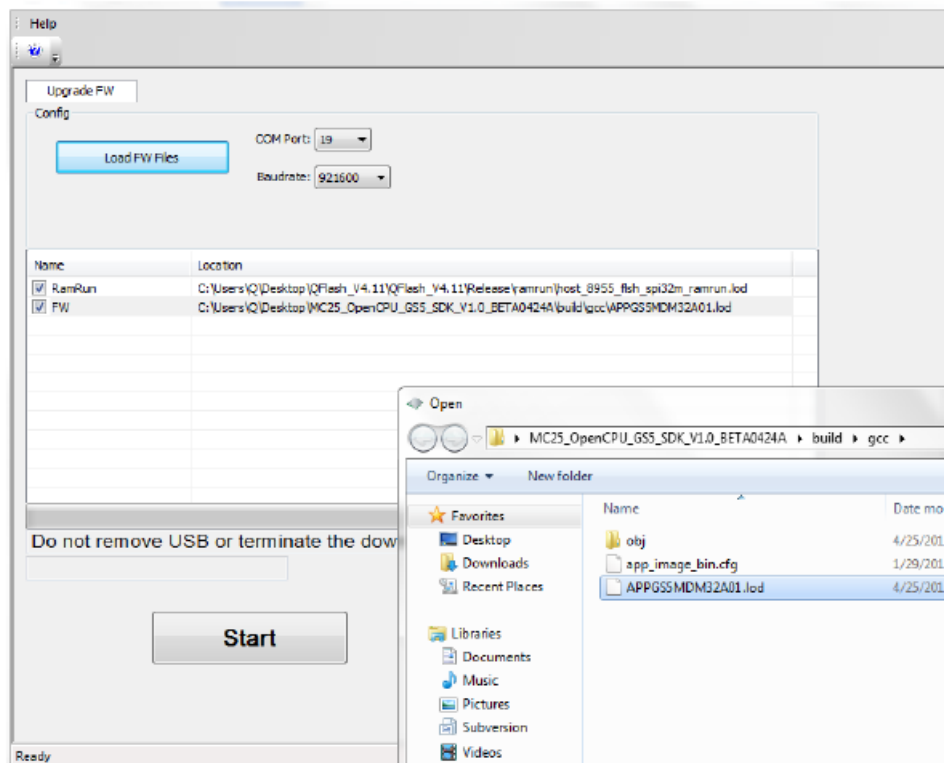


NOTE: Baud rates have many different values. It is the hardware environment that determines whether the specified baud rate is supported or not; If not supported, an error message will be returned.

Load Firmware Files

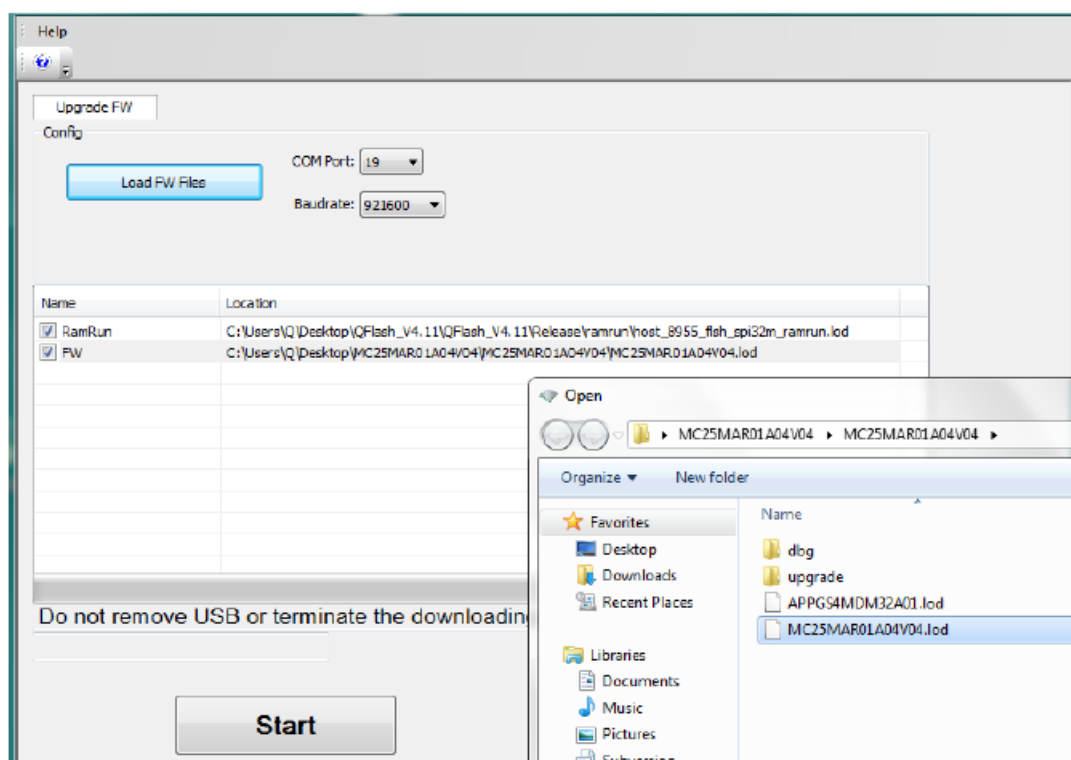
Load App Firmware

Click the button “Load FW Files”, and select the “.lod” file of App firmware that needs to be downloaded to the module.



Load Core Firmware

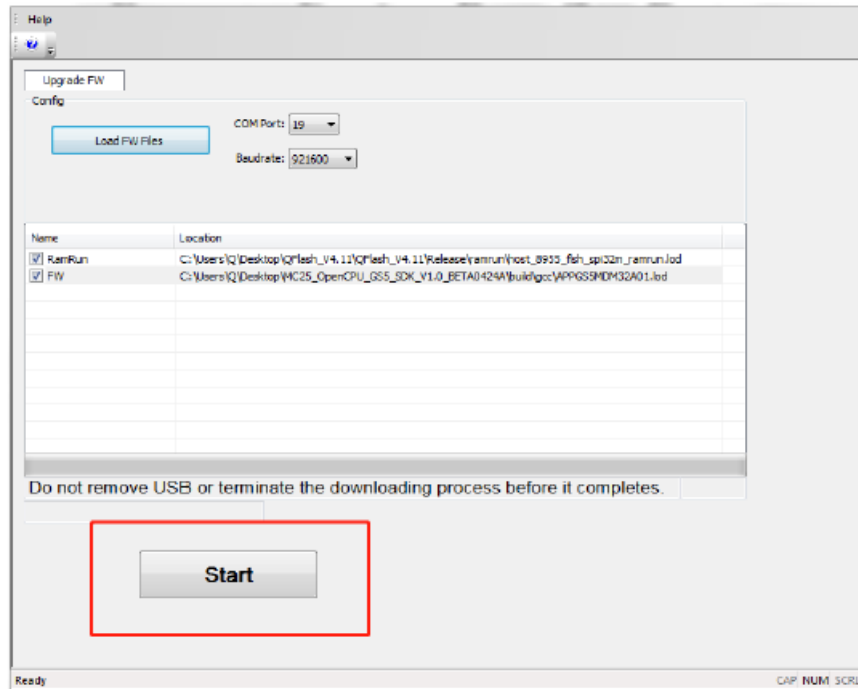
Click the button “Load FW Files”, and select the “.lod” file in core firmware package (offered by Quectel) which needs to be downloaded to the module.



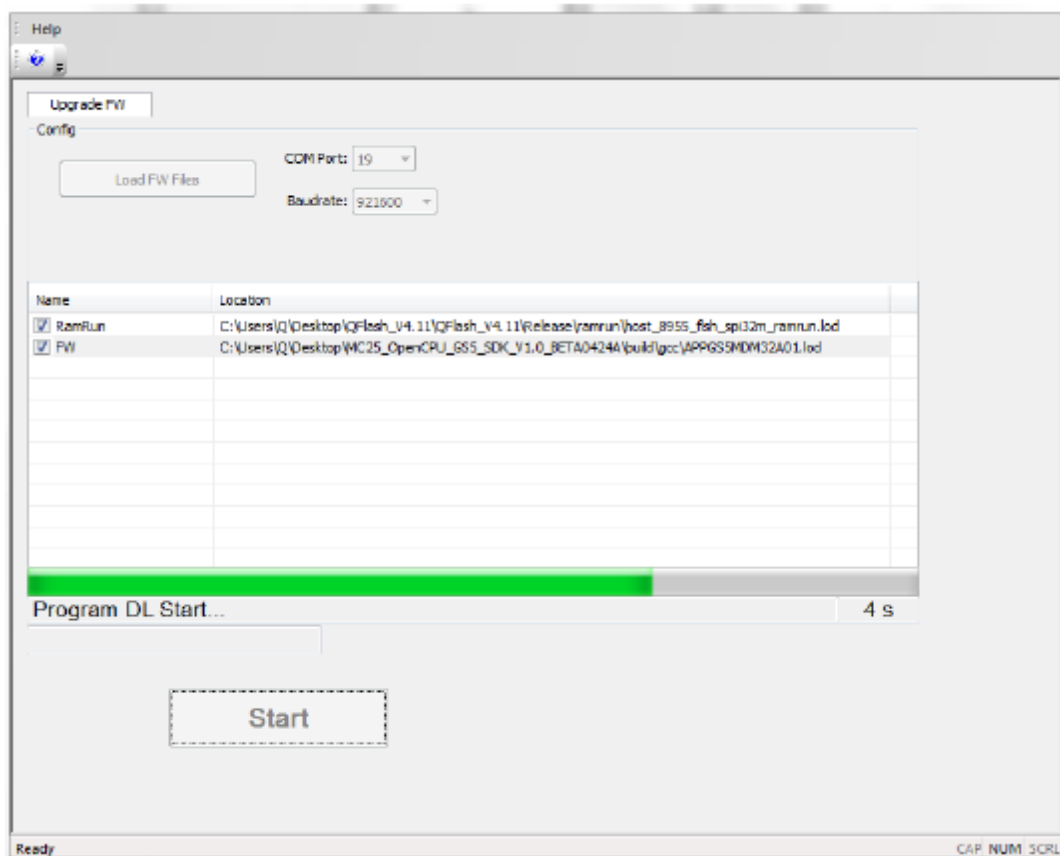
Upgrade Firmware

Upgrade App Firmware

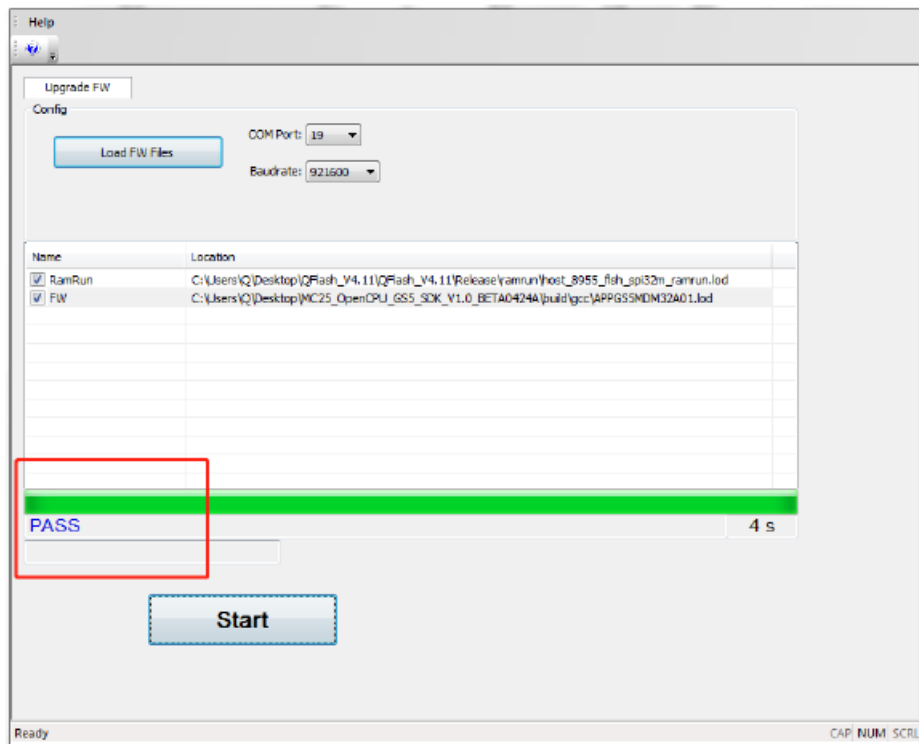
Step 1: Click the “Start” button to upgrade the App firmware.



Step 2: Then firmware upgrade will be started.

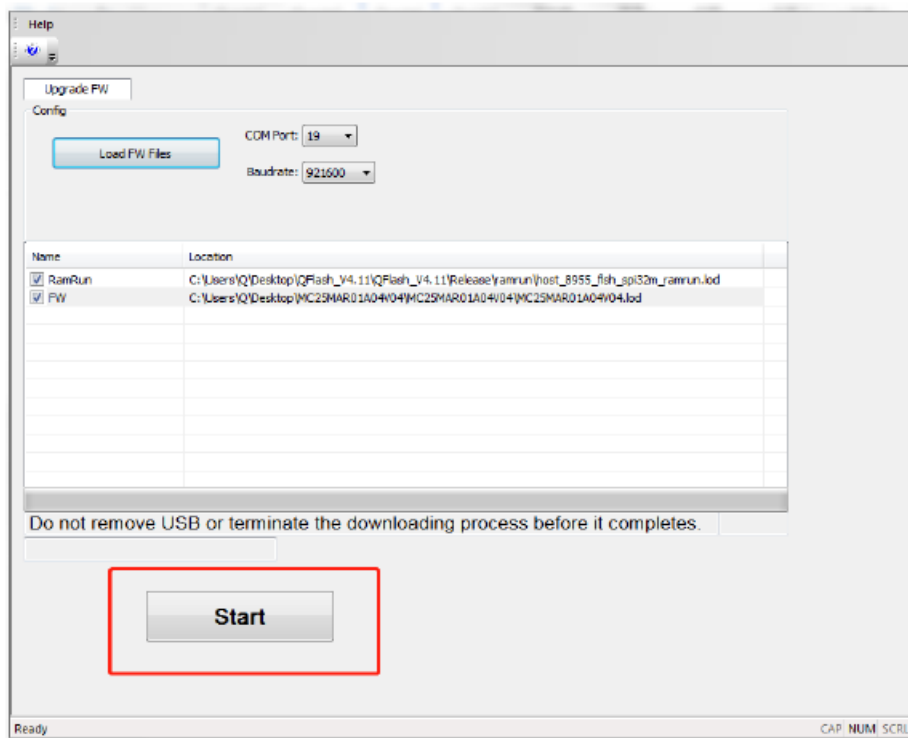


Step 3: “PASS” will be shown on the interface after the firmware is successfully upgraded, as shown in the following figure. Then it is needed to restart the module manually.

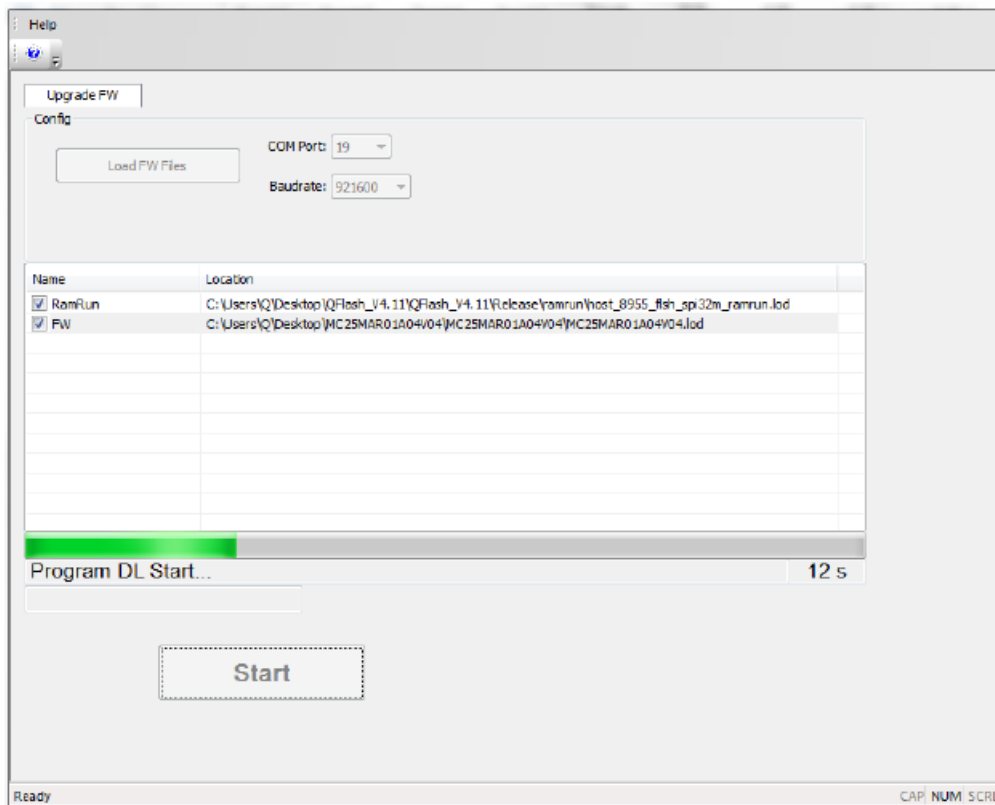


Upgrade Core Firmware

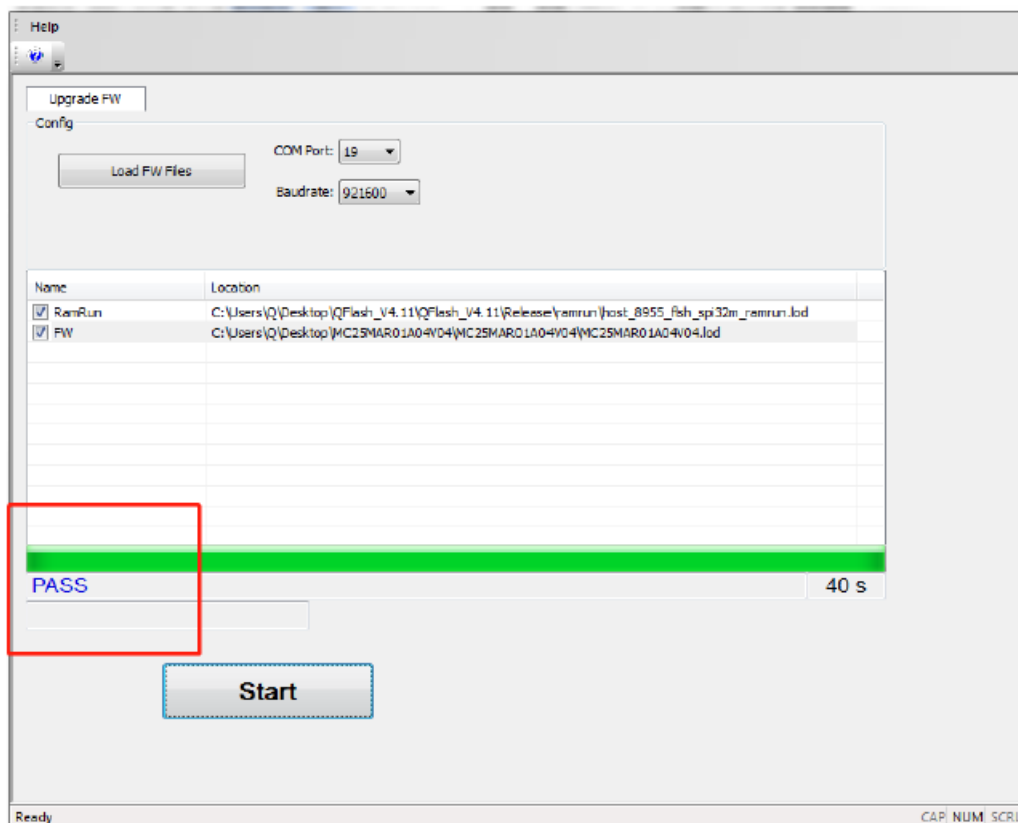
Step 1: Click the “Start” button.



Step 2: Then firmware upgrade will be started.



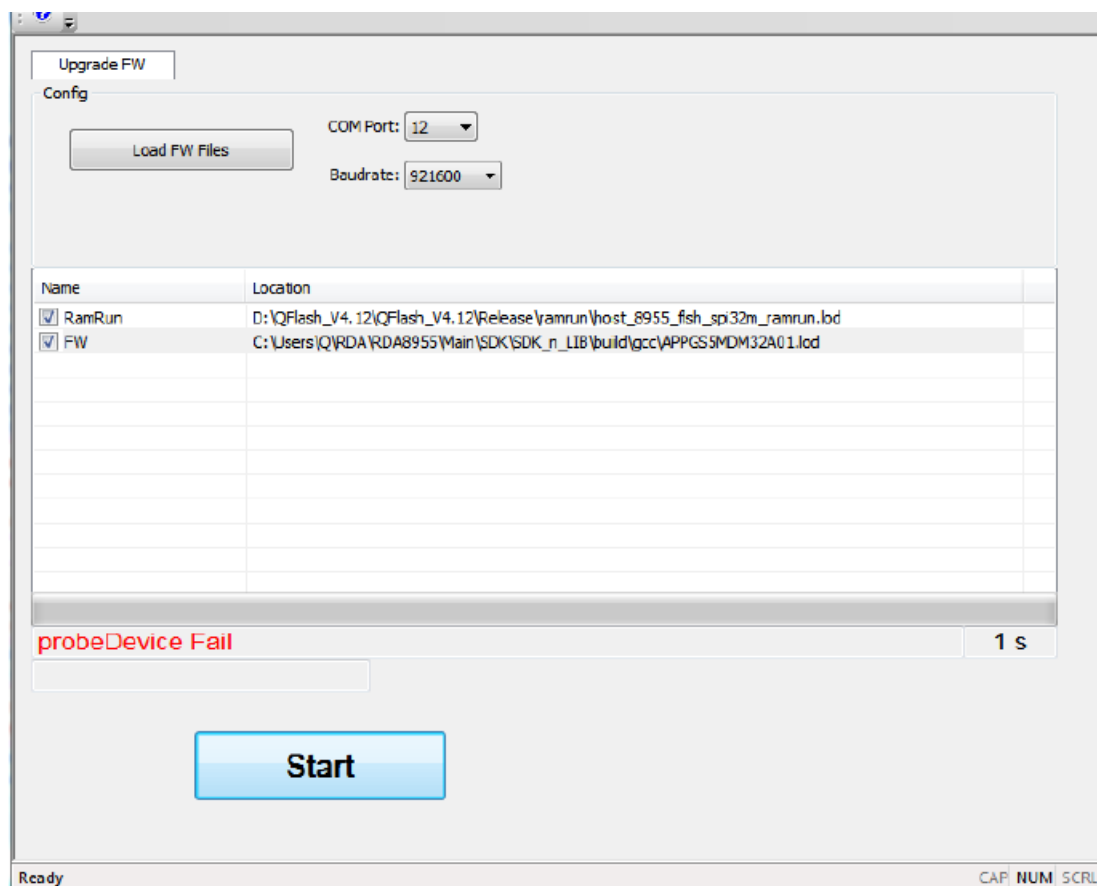
Step 3: "PASS" will be shown on the interface after the firmware is successfully upgraded, as shown in the following figure. Then it is needed to restart the module manually.



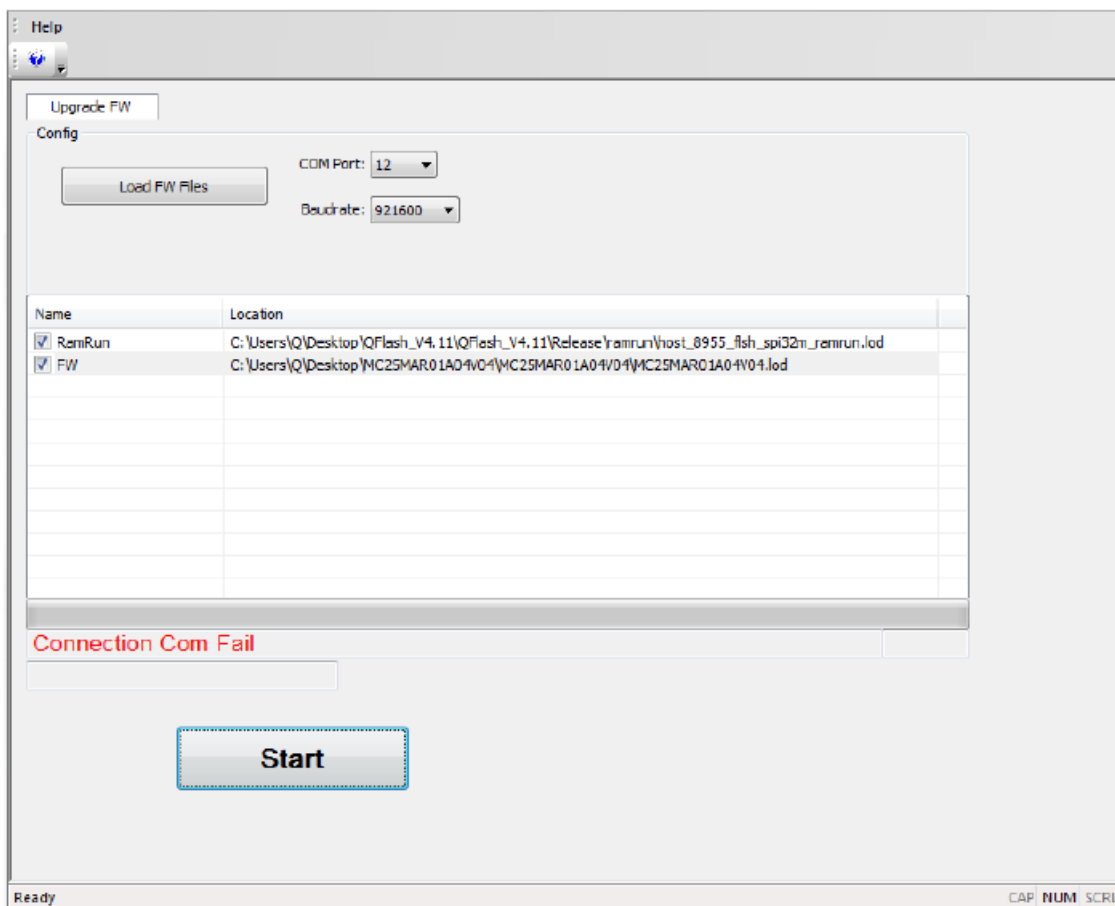
Abnormalities

Abnormalities may be caused by incorrect parameters of baud rates, damaged EVB/TE-A or invalid files, etc. The following illustrates some common abnormalities.

Select a Wrong Serial Port



Connected to an Occupied Serial Port

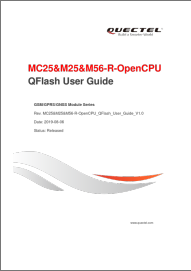


Select an Invalid Load File

Table 1: Terms and Abbreviations
Abbreviation Description

- App OpenCPU Application
- Core System, OpenCPU Operating System
- OS Operating System

Documents / Resources

	<p>QECTEL MC25 QFlash GSM/GPRS/GNSS Module [pdf] User Guide MC25, M25, M56-R-OpenCPU, QFlash GSM Module, QFlash GPRS Module, QFlash GNSS Module</p>
---	---