



QUECTEL EC25-E LTE Standard Module Instruction Manual

[Home](#) » [QUECTEL](#) » QUECTEL EC25-E LTE Standard Module Instruction Manual 

Contents

- 1 QUECTEL EC25-E LTE Standard Module
- 2 Product Information
- 3 Product Usage Instructions
 - 3.1 Revision History
- 4 Introduction
 - 4.1 Applicable Modules
- 5 Local Management Commands
- 6 Profile Download Commands
- 7 eSIM Related Notifications
- 8 Summary of Error Codes
- 9 Legal Notices
- 10 Documents / Resources
 - 10.1 References



QUECTEL EC25-E LTE Standard Module



Product Information

- The EC25 Series & EG21-G eSIM is an LTE Standard Module Series developed by Quectel. It provides reliable and efficient connectivity solutions for various applications. The module is designed to offer comprehensive services to customers.

Contact Information

- If you require any assistance or have any inquiries, please contact Quectel Wireless Solutions Co., Ltd. at:
- Building 5, Shanghai Business Park Phase III (Area B), No.1016 Tianlin Road, Minhang District, Shanghai 200233, China
- Tel: +86 21 5108 6236
- Email: info@quectel.com
- For more information, visit the Quectel support website.

Legal Notices

- **Use and Disclosure Restrictions:** Documents and information provided by Quectel shall be kept confidential and should not be accessed or used for any purpose except as expressly provided.
- **Trademarks:** Except as otherwise set forth, no rights to use any trademark, trade name, abbreviation, or counterfeit product owned by Quectel or any third party are granted.
- **Third-Party Rights:** This document may refer to hardware, software, and/or documentation owned by third parties. Use of such materials shall be governed by applicable restrictions and obligations.
- **Privacy Policy:** Certain device data may be uploaded to Quectel's or third-party's servers for module functionality. Quectel adheres to relevant laws and regulations and processes data for the purpose of performing the service or as permitted by applicable laws.
- **Disclaimer:** Quectel acknowledges no liability for any injury or damage arising from reliance upon the information provided. They shall bear no liability resulting from inaccuracies or omissions in the information

contained herein.

Document Details

Revision History	Date	Author	Description
1.0.0	2022-09-30	Neo JIANG	Creation of the document Preliminary

Product Usage Instructions

The EC25 Series & EG21-G eSIM is a versatile LTE module that can be used in various applications. To use the module effectively, please follow these instructions:

1. Ensure that the module is properly connected to the host device.
2. Power on the host device and verify that the module is receiving power.
3. Install the necessary drivers and software provided by Quectel for your operating system.
4. Refer to the EC25 Series & EG21-G eSIM AT Commands Manual for detailed instructions on how to interact with the module using AT commands.
5. Configure the module according to your application requirements using the appropriate AT commands.
6. Test the module’s connectivity and functionality by sending and receiving data.
7. If you encounter any issues or require technical support, refer to the contact information provided in the user manual or visit the Quectel support website.

By following these instructions, you will be able to effectively utilize the EC25 Series & EG21-G eSIM LTE module for your specific application needs.

About the Document

Revision History

Version	Date	Author	Description
—	2022-09-30	Neo JIANG	Creation of the document
1.0.0	2022-09-30	Neo JIANG	Preliminary

Introduction

This Document introduces the AT command of ESIM in the EC25 series and EG21-G Module.

Applicable Modules

Table 1: Applicable Modules

Module Series	Module
EC25	EC25-E
	EC25-EU
EG21	EG21-G

Definitions

•	<CR>	Carriage return character.
•	<LF>	Line feed character.
•	<...>	Parameter name. Angle brackets do not appear on the command line.
•	[...]	Optional parameter of a command or an optional part of TA information response.
•		Square brackets do not appear on the command line. When an optional parameter is
•		not given in a command, the new value equals its previous value or the default settings,
•		unless otherwise specified.
•	<u>Underline</u>	The default setting of a parameter.

AT Command Syntax

- All command lines must start with AT or at and end with <CR>. Information responses and result codes always start and end with a carriage return character and a line feed character: <CR><LF><response><CR><LF>. In tables presenting commands and responses throughout this document, only the commands and responses are presented, and <CR> and <LF> are deliberately omitted.
- The AT Commands Set implemented by EC25 series and EG21-G is a combination of 3GPP TS 27.007, 3GPP TS 27.005 and ITU-T recommendation V.25ter as well as the AT Commands developed by Quectel.
- AT commands implemented by EC25 series and EG21-G fall into one category syntactically:

Extended

- Extended commands can be executed in several modes, as shown in the following table:

Table 2: Types of AT Commands

Command Type	Syntax	Description
Test Command	AT+<cmd>=?	Test the existence of the corresponding command and return information about the type, value, or range of its parameter.
Read Command	AT+<cmd>?	Check the current parameter value of the corresponding command.
Write Command	AT+<cmd>=<p1>[,<p2>[,<p3>[...]]]	Set user-definable parameter value.
Execution Command	AT+<cmd>	Return a specific information parameter or perform a specific action.

- Multiple commands can be placed on a single line using a semi-colon (;) between commands. In such cases, only the first command should have AT prefix.
- Commands can be in upper or lower case.
- Spaces should be ignored when you enter AT commands, except in the following cases:
 - Within quoted strings, where spaces are preserved;
 - Within an unquoted string or numeric parameter;
 - Within an IP address;
 - Within the AT command name up to and including a =, ? or =?.
- On input, at least a carriage return is required. A newline character is ignored so it is permissible to use carriage return/line feed pairs on the input.
- If no command is entered after the AT token, OK will be returned. If an invalid command is entered, ERROR will be returned.
- Optional parameters, unless explicitly stated, need to be provided up to the last entered parameter.

AT Command Responses

- When the AT command processor has finished processing a line, it will output OK, ERROR+CME ERROR: <err> to indicate that it is ready to accept a new command.
- Solicited information responses are sent before the final OK, ERROR +CME ERROR: <err>.
- Responses will be in the format of: <CR><LF>+CMD1:<parameters><CR><LF> <CR><LF>OK<CR><LF>

Or

- <CR><LF><parameters><CR><LF>
 - <CR><LF>OK<CR><LF>

Declaration of AT Command Examples

- The AT command examples in this document are provided to help you learn about the use of the AT commands introduced herein. The examples, however, should not be taken as Quectel's recommendations or suggestions about how to design a program flow

- or what status to set the module into. Sometimes multiple examples may be provided for one AT command. However, this does not mean that there is a correlation among these examples, or that they should be executed in a given sequence.

Local Management Commands

AT+QESIM="list" List Profiles

This command lists profiles currently installed for the module.

AT+QESIM="list" List Profiles	
Write Command AT+QESIM="list"[,<mode>]	Response if <result> is 0: +QESIM: "list",0[<iccid>,<status>,<nickname>,<provider> <iccid>,<status>,<nickname>,<provider> ...]
	OK
	if <result> is not 0: +QESIM: "list",<result>[,<errinfo1>,<errinfo2>]
	OK Or ERROR
	If there is an error related to ME functionality: +CME ERROR: <err>
Maximum Response Time	6000 ms
Characteristics	/

Parameter

<mode>	Integer type. List mode. 0 List profiles with profile class = 2 in eUICC 1 List all profiles in eUICC
<iccid>	String type. ICCID of the current profile.
<status>	Integer type. Profile state.

	0 Profile Disabled
	1 Profile Enabled
<nickname>	String type. Profile nickname.
<provider>	String type. Service provider name.
<result>	Integer type. Result code. Range: 0–3. Please refer to Chapter 5 for specific error information.
<errinfo1>	String type. Error information 1. If <result> is 0, it will not be presented.
<errinfo2>	String type. Error information 2. If <result> is 0, it will not be presented.

Example

- **AT+QESIM="list"**
 - **+QESIM:** "list",0
- "8932042000000199885F",1,"sim1","V-Telekom"
 - "89320420000002068839",0,"YFL1","YFL1" OK

NOTE

If the optional parameter <mode> is omitted, the default value 0 will be used.

AT+QESIM="enable" Enable Profiles

This command enables profiles currently installed for the module.

AT+QESIM="enable" Enable Profiles	
Write Command AT+QESIM="enable",<iccid>	Response +QESIM: "enable",<result>[,<errinfo1>,<errinfo2>]
	OK Or ERROR
	If there is an error related to ME functionality: +CME ERROR: <err>
Maximum Response Time	6000 ms
Characteristics	/

Parameter

<iccid>	String type. The ICCID number of the profile.
<result>	Integer type. Result code. Range: 0–3. Please refer to Chapter 5 for specific error information.
<errinfo1>	String type. Error information 1. If <result> is 0, it will not be presented.
<errinfo2>	String type. Error information 2. If <result> is 0, it will not be presented.

Example

- AT+QESIM="enable", "8932042000000199885F"
 - +QESIM: "enable",0
- OK

AT+QESIM="disable" Disable Profiles

- This command disables profiles currently enabled for the module.

AT+QESIM="disable" Disable Profiles	
Write Command AT+QESIM="disable",<iccid>	Response +QESIM: "disable",<result>[,<errinfo1>,<errinfo2>]
	OK Or ERROR
	If there is an error related to ME functionality: +CME ERROR: <err>
Maximum Response Time	6000 ms
Characteristics	/

Parameter

<iccid>	String type. The ICCID number of the profile.
<result>	Integer type. Result code. Range: 0–3. Please refer to Chapter 5 for specific error information.
<errinfo1>	String type. Error information 1. If <result> is 0, it will not be presented.
<errinfo2>	String type. Error information 2. If <result> is 0, it will not be presented.

Example

- AT+QESIM="disable","8932042000000199885F"
 - **+QESIM:** "disable",0
- OK

AT+QESIM="delete" Remove Profiles

- This command removes profiles currently installed for the module.

AT+QESIM="delete" Remove Profiles	
Write Command AT+QESIM="delete",<iccid>	Response +QESIM: "delete",<result>[,<errinfo1>,<errinfo2>]
	OK Or ERROR
	If there is an error related to ME functionality: +CME ERROR: <err>
Maximum Response Time	6000 ms
Characteristics	/

Parameter

<iccid>	String type. The ICCID number of the profile.
<result>	Integer type. Result code. Range: 0–3. Please refer to Chapter 5 for specific error information.
<errinfo1>	String type. Error information 1. If <result> is 0, it will not be presented.
<errinfo2>	String type. Error information 2. If <result> is 0, it will not be presented.

Example

- AT+QESIM="delete","8932042000000199885F"
 - +QESIM: "delete",0
- OK

AT+QESIM="nickname" Set New Nickname for Profiles

- This command sets new nicknames for profiles.

AT+QESIM="nickname" Set New Nickname for Profiles	
Write Command AT+QESIM="nickname",<nickname>,<iccid>	Response +QESIM: "nickname",<result>[,<errinfo1>,<errinfo2>]
	OK Or ERROR
	If there is an error related to ME functionality: +CME ERROR: <err>
Maximum Response Time	6000 ms
Characteristics	The command takes effect immediately.

Parameter

<nickname>	String type. The new nickname of the profile. Maximum length is 32 characters.
<iccid>	String type. The ICCID number of the profile.
<result>	Integer type. Result code. Range: 0–3. Please refer to Chapter 5 for specific error information.
<errinfo1>	String type. Error information 1. If <result> is 0, it will not be presented.
<errinfo2>	String type. Error information 2. If <result> is 0, it will not be presented.

Example

- AT+QESIM="nickname","simcad_test","8932042000000199885F"
- +QESIM: "nickname",0
- OK

AT+QESIM="eid" Get the eUICC ID of the Module

- This command gets the eUICC ID of the module.

AT+QESIM="eid" Get the eUICC ID of the Module	
Write Command AT+QESIM="eid"	Response If <result> is 0: +QESIM: "eid",0,<eid>
	If <result> is not 0: +QESIM: "eid",<result>,<errinfo1>,<errinfo2>
	OK Or ERROR
	If there is an error related to ME functionality: +CME ERROR: <err>
Maximum Response Time	6000 ms
Characteristics	/

Parameter

<eid>	String type. eUICC ID.
<result>	Integer type. Result code. Range: 0–3. Please refer to Chapter 5 for specific error information.
<errinfo1>	String type. Error information 1. If <result> is 0, it will not be presented.
<errinfo2>	String type. Error information 2. If <result> is 0, it will not be presented.

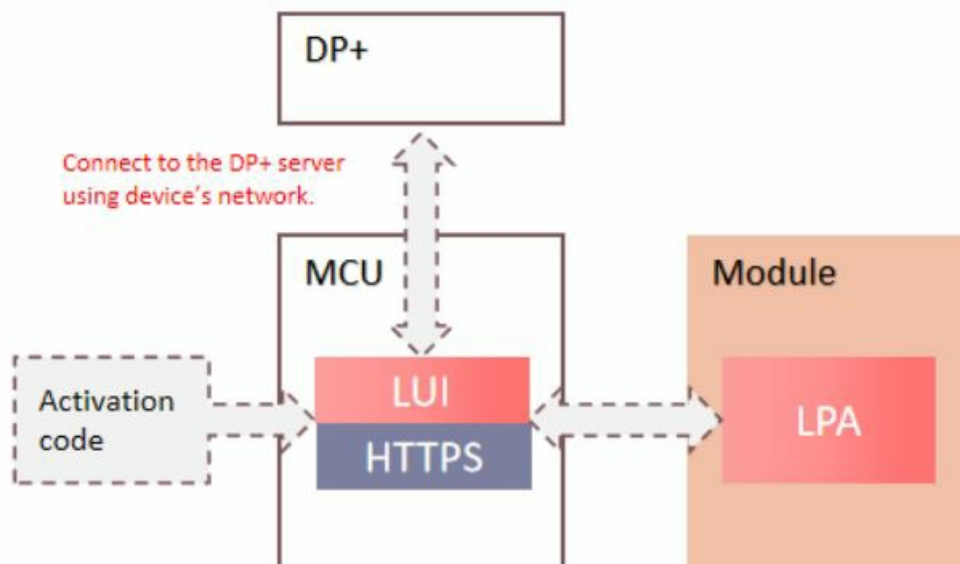
Example

- AT+QESIM="Eid"
- +QESIM: "eid",0,"89049032000001000000092092075457"
- OK

Profile Download Commands

External Network Mode

- In this mode, the MCU acts as a communication channel between the module and DP+ to transfer messages. The MCU should establish a connection with DP+ via HTTPS, and use UART to communicate with the module. This applies to scenarios where the eUICC does not have an initial profile and the MCU has networking capability (e.g. WIFI). Please refer to Chapter 3.1.3 for the detailed process.



- AT+QESIM="download" Initiate the Download Process of Profiles
- This command initiates the download process of the profile. The module will report an unsolicited result code : +QESIM: "Download",<ret> to indicate the profile download result when the process of download and the profile installation end.

AT+QESIM="download" Initiate the Download Process of Profiles	
Write Command	Response
AT+QESIM="download",<activationCode>[,<confirmationCode>]	If <result> is 0: +QESIM: "trans",0,<url>,<payloadlen>,<payload>
	If <result> is not 0: +QESIM: "trans",<result>,<errinfo1>,<errinfo2> OK Or ERROR If there is an error related to ME functionality: +CME ERROR: <err>
Maximum Response Time	6000 ms
Characteristics	/

Parameter

<activationCode>	String type. From the QR code scan.
<confirmationCode>	String type. A code used to authorize the usage of the MatchingID to confirm the download and installation of the profile.
<url>	String type. HTTP URL. This is the specific address used by DP+ to process messages.
<payloadlen>	Integer type. The length of <payload>.
<payload>	String type. The json format data that needs to be sent to DP+.
<result>	Integer type. Result code. Range: 0–3. Please refer to Chapter 5 for specific error information.
<errinfo1>	String type. Error information 1. If <result> is 0, it will not be presented.
<errinfo2>	String type. Error information 2. If <result> is 0, it will not be presented.
<ret>	Integer type. Range: 0–1. The profile download and installation result.
	0 Success
	1 Failure

Example

AT+QESIM="download","LPA:1\$testsm dpplus.infineon.com\$0000000000003003"+QESIM:"trans",0,"/gsma/rsp2/es9plus/initiateAuthentication",239{"euiccChallenge":"hOuZDcgULnLzkOZv8hWO3w==","euiccInfo1":"vyBhggMCAgKpLAQUwLxwujaSnUO0Z/9XVwUw5Xq4/NgEFPVBcr35ipXWXL64ijihwR2ACoXDqiwEFMC8cLo2kp1DtGf/V1cFMOV6uPzYBBT1QXK9+YqV1ly+ulo4ocEdgAqFww==","smdpAddress":"testsm dpplus.infineon.com"}OK

NOTE

1. If the Confirmation code required Flag in <activationCode> is 1, <confirmationCode> is required. Please refer to Chapter 3.1.3 for the download process.
2. Activation Codes are typically obtained from Mobile Network Operator and are structured as follows:

Name	Description	MOC
AC_Format	Format of the Activation Code. SHALL be set to "1" for this Format of the Activation Code and any subsequent backward compatible Format	M
Delimiter	SHALL be set to "\$"	M
SM-DP+ Address	FQDN (Fully Qualified Domain Name) of the SM-DP+ (e.g., SMDP.GSMA.COM) restricted to the Alphanumeric mode character set defined in table 5 of ISO/IEC 18004 [15] excluding '\$'	M
Delimiter	SHALL be set to "\$"	M
AC_Token	MatchingID as described in section (4.1.1)	M
Delimiter	SHALL be present and set to "\$" if any of the following optional parameters is present	C
SM-DP+ OID	SM-DP+ OID in the CERT.DPauth.ECDSA	O
Delimiter	SHALL be present and set to "\$" if any of the following optional parameters is present	C
Confirmation Code Required Flag	SHALL be present and set to "1" if Confirmation Code is required; otherwise it SHALL be absent	O

AT+QESIM="trans" Forward DP+ Messages

This command forwards DP+ messages to the module during the process of downloading and installing the profile, and the module will report an unsolicited result code: +QESIM: “trans”,0,<url>,<payloadlen>,<payload> or +QESIM: “trans”,<result>,<errinfo1>,<errinfo2>] when the module receives a complete and correct DP+ message.

AT+QESIM="trans" Forward DP+ Messages	
Write Command AT+QESIM="trans",<totallen>,<state> ,<seq>,<len>,<data>	Response +QESIM: “trans”,<result>,<errinfo1>,<errinfo2>]
	OK Or ERROR
	If there is an error related to ME functionality: +CME ERROR: <err>
Maximum Response Time	500 ms
Characteristics	/

Parameter

<totallen>	Integer type. The total length of the DP+ message after it is converted into a HEX string. Range: 0–65535. If the DP+ message is greater than the maximum value of <len> , the DP+ message needs to be divided into multiple data packets for forwarding.
<state>	Integer type. Data block status. 0 Last packet of DP+ message 1 Not last packet of DP+ message
<seq>	Integer type. Serial number. Range: 0–255.
<len>	Integer type. The length of data to be sent. Range: 0–1400. If <totallen> is greater than the maximum value of <len> , the DP+ message needs to be divided into multiple data packets for forwarding.
<data>	Hex string type. The send data of DP+ message.
<url>	String type. HTTP URL. This is the specific address used by DP+ to process messages.
<payloadlen>	Integer type. The length of <payload> .
<payload>	String type. The jason format data that needs to be sent to DP+.
<result>	Integer type. Result code. Range: 0–3. Please refer to Chapter 5 for specific error information.
<errinfo1>	String type. Error information 1. If <result> is 0, it will not be presented.
<errinfo2>	String type. Error information 2. If <result> is 0, it will not be presented.

NOTE

The maximum data length that AT+QESIM="trans" command can send per packet is 1400 hex string, If the data is

greater than 1400, it needs to be sent in multiple packets.

Example

AT+QESIM="download","LPA:1\$democonsumer.validspereachdpplus.com\$1BINSTP8J0EFCWLLE4JY4S0YGO7II40ZXSQESI06THYWPLZW65CXYWK5KPZJCZ"+QESIM:"trans",0,"/gsma/rsp2/es9plus/initiateAuthentication",195{"euiccChallenge":"WbVmufInshaRFR2d/Vm+1w==","euiccInfo1":"vyA1ggMCAgKpFgQUgTcPUSXQsdQI1MOyMubSXnlb6/ufgQUgTcPUSXQsdQI1MOyMubSXnlb6/uQAA==","smdpAddress":<demo-consumer.validspereachdpplus.com>"}"

OK

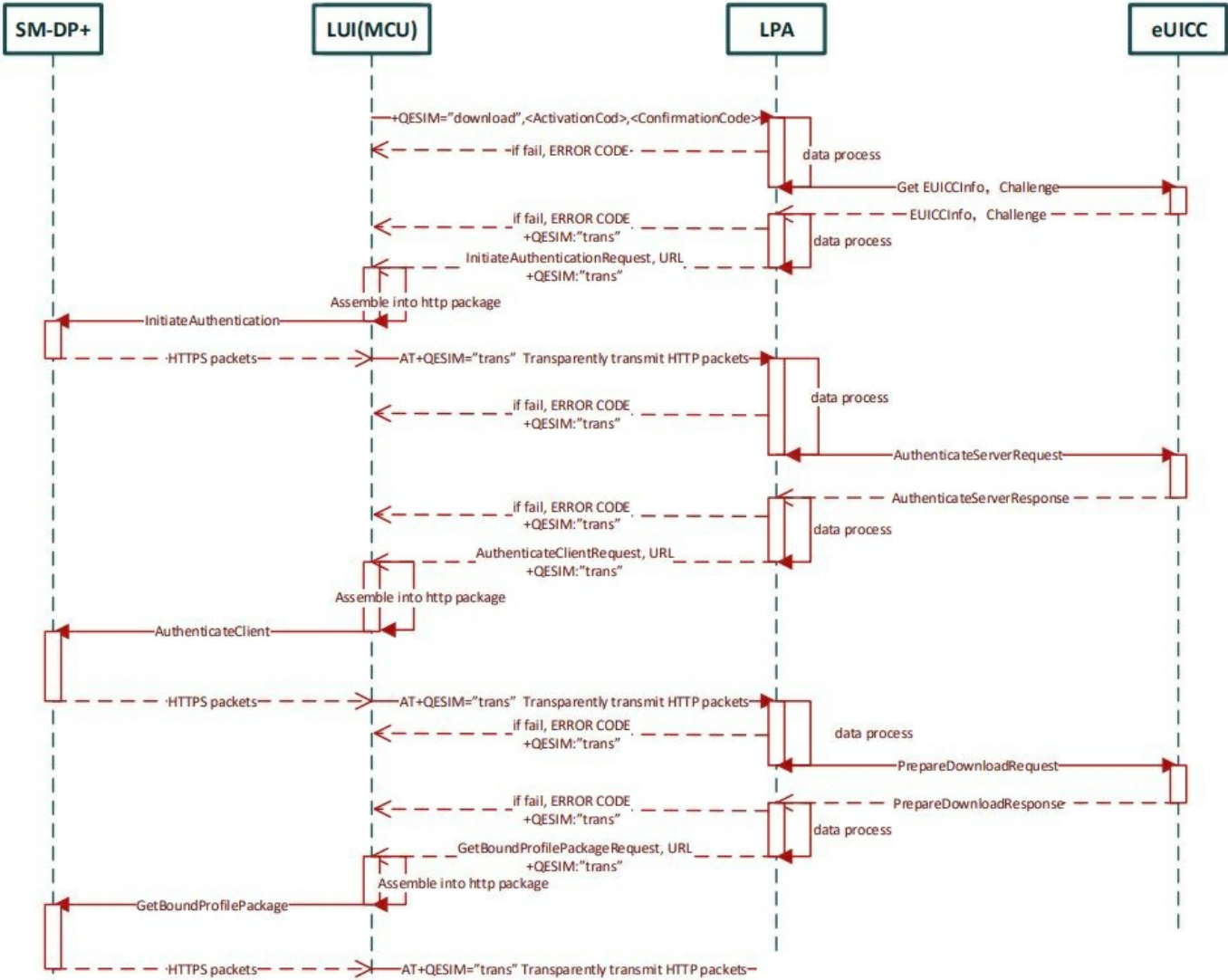
AT+QESIM="trans",2924,1,0,1400,"485454502F312E312032303041646D696E2D50726F746F636F6C3A2067736D612F7273702F76322E322E32436F6E74656E742D547970653A206170706C69636174696F6E2F6A736F6E3B636861727365743D5554462D38436F6E74656E742D4C656E6774683A2031333230446174653A204D6F6E2C203235204F637420323032312030323A32393A343820474D547B22686561646572223A7B2266756E6374696F6E457865637574696F6E537461747573223A7B22737461747573223A2245786563757465642D53756363657373227D7D2C227472616E73616374696F6E4964223A223334364333383935383944393641453842423944314139324142393536463737222C227365727665725369676E656431223A224D463241454452734F4A574A3257726F753530616B7175566233654245466D315A726E794A3749576B5255646E66315A767465444A57526C6257387459323975633356745A584975646D46736157527A634756795A57466A61475277634778316379356A623232454545724C34342F59427344704F42706B507A43694671733D222C227365727665725369676E617475726531223A22587A6441396D6573684A517878723142656A58743042686A656E64627A373958396C7530337A6E42644C6A36696C4A6C525A6C464577326A514554656E53714B34736333797A496B41505652542F415266315564644E556C75773D3D222C2265756963634369504B4964546F426555736564223A22424253424E7739524A64437831416A557737497935744A65655676722B773D3D222C22736572766572436572746966963617465223A224D49494367444343416961674177494241674951637A5A456B562B76465238335936656B4E363636447A414B42676771686B6A4F50515144416A42454D526777466759445651514B457739485530306751584E7A62324E7059585270623234784B44416D"+QESIM:"trans",0 +QESIM:"trans",0 OK AT+QESIM="trans",2924,0,2,124,"776167517071436145596C5A75514967525243594A78646135784767546C7073436A317A5868376E49666624261536B7537386834626177354F6F3D227D"+QESIM:"trans",0 OK +QESIM:"trans",0,"/gsma/rsp2/es9plus/authenticateClient",2304,"{"transactionId":"346C389589D96AE8BB9D1A92AB956F77","authenticateServerResponse":"vziCBnugggZ3MIIBGYAQNw4IYnZauI7nRqSq5Vvd4MIZGVtby1jb25zdW1lci52YWxpZHNwZXJlYWNoZHBwbHVzLmNvbYQQSsvjj9gGwOk4GmQ/MKIWq78ieYEDAgMBggMCAgKDAyIBAYQPgQEAggQABry/gwQAACjBhQUgfz7/wIYDDAAAhwMCAwCIAgPYqRYEFIE3D1EI0LHUCNTDsjLm0I55W+v7qhYEFIE3D1EI0LHUCNTDsjLm0I55W+v7BAMAAAAMDVZELU1ELVVQLTA0MjCgUIBAMUJJTINUUDhKMEVGQ1dMTEU0Sik0UzBZR083Suk0MFpYU1FFU0kwNIRIWWdQTFotVzY1Q1hZV0s1LUtQWkpDWqEMgAgAAAEAAEAHAqEA XzdAzD6neWNZxq/vR1JBGEpydKWcDs3e+QvcyrS0x+8sTmb4MIKvdPMrxJsTzHRMAIBKEEoTc+bE2VXXYgMPfikowjCCAkYwggHsoAMCAQICFHB1/k3F6BXsigxdCmDaWD94qPrMAoGCCqGSM49BAMCMGYxCzAJBgNVBAYTAKVTMSowKAYDVQQKDCFCWQUxJRCBTT0xVQ0IPTkVtIFRFRQ05PTE9HSUNBUyBTQVUxXjAMBgNVBAsMBVZBTEIEMRswGQYDVQQDDBJWQUxJRCBFBVU0gQ09OU1VNRVlwIwBcNMjEwNjE3MTEExODU0WhgPOTk5OTEyMzEyMzU5NTIamHEExCzAJBgNVBAYTAKVTMQ4wDAYDVQQKDAVWQUxJRCBEXMBUGA1UEAwW0VkfFMSUQgRVVJQ0MgQ0QxXjAMBgNVBAsMBVZBTEIEMSkwJwYDVQQQFDCA4OTAzNDAXMTAyMjEwMDAwMDAwMDAwMDAwMDAzMDk5NTBZMBMGByqGSM49AgEGCCqGSM49AwEHA0IABOyOsVYZzQY6ZWBe6CaaYXOqW9hc+WGTAIx1zJPQXw2RW1+Xp8dfNO1sV+I6ho8L73L3e3/RvSyZC73d3UUEKN+jazBpMB8GA1UdIwQYMBaAFK86bAvGg+vfM7W6a8nluW4KaMyvMB0GA1UdDgQWBBSckuC9eUHD1i29kzzQ3rfhgVbaqzAOBgNVHQ8BAf8EBAMCB4AwFwYDVR0gAQH/BA0wCzAJBgdnRIBAgEBMAoGCCqGSM49BAMCA0gAMEUCIHPceNKEuYDE3jkqjtceEB2ol/cimWoIA51jGC5hhqhYAiEAhz11sJUNpPevPCd8i5a08U+VLPXY/fvUvR8C6Y9XPA8wggLJMIIcB6ADAgECAhBYZ3wyc4kb0hv8uYDONcsLMAoGCCqGSM49BAMCMEQxGDAWBgNVBAOTD0dTTSBBc3NvY2IhdGlvbGJlEoMCYGA1UEAxMfR1NNIEFzc29jaWF0aW9uI0gUINQMIBSb290IENJMTAEfW0xOTA0MTEwMDAwMDAwMDAwMDAwMDAwMDAwMDAwMDAzMDk5NTBZMBMGByqGSM49AgEGCCqGSM49AwEHA0IABOyOsVYZzQY6ZWBe6CaaYXOqW9hc+WGTAIx1zJPQXw2RW1+Xp8dfNO1sV+I6ho8L73L3e3/RvSyZC73d3UUEKN+jazBpMB8GA1UdIwQYMBaAFK86bAvGg+vfM7W6a8nluW4KaMyvMB0GA1UdDgQWBBSckuC9eUHD1i29kzzQ3rfhgVbaqzAOBgNVHQ8BAf8EBAMCB4AwFwYDVR0gAQH/BA0wCzAJBgdnRIBAgEBMAoGCCqGSM49BAMCA0gAMEUCIHPceNKEuYDE3jkqjtceEB2ol/cimWoIA51jGC5hhqhYAiEAhz11sJUNpPevPCd8i5a08U+VLPXY/fvUvR8C6Y9XPA8wggLJMIIcB6ADAgECAhBYZ3wyc4kb0hv8uYDONcsLMAoGCCqGSM49BAMCMEQxGDAWBgNVBAOTD0dTTSBBc3NvY2IhdGlvbGJlEoMCYGA1UEAxMfR1NNIEFzc29jaWF0aW9uI0gUINQMIBSb290IENJMTAEfW0xOTA0MTEwMDAwMDAwMDAwMDAwMDAwMDAwMDAwMDAzMDk5NTBZMBMGByqGSM49AgEGCCqGSM49AwEHA0IABOyOsVYZzQY6ZWBe6CaaYXOqW9hc+WGTAIx1zJPQXw2RW1+Xp8dfNO1sV+I6ho8L73L3e3/RvSyZC73d3UUEKN+jazBpMB8GA1UdIwQYMBaAFK86bAvGg+vfM7W6a8nluW4KaMyvMB0GA1UdDgQWBBSckuC9eUHD1i29kzzQ3rfhgVbaqzAOBgNVHQ8BAf8EBAMCB4AwFwYDVR0gAQH/BA0wCzAJBgdnRIBAgEBMAoGCCqGSM49BAMCA0gAMEUCIHPceNKEuYDE3jkqjtceEB2ol/cimWoIA51jGC5hhqhYAiEAhz11sJUNpPevPCd8i5a08U+VLPXY/fvUvR8C6Y9XPA8wggLJMIIcB6ADAgECAhBYZ3wyc4kb0hv8uYDONcsLMAoGCCqGSM49BAMCMEQxGDAWBgNVBAOTD0dTTSBBc3NvY2IhdGlvbGJlEoMCYGA1UEAxMfR1NNIEFzc29jaWF0aW9uI0gUINQMIBSb290IENJMTAEfW0xOTA0MTEwMDAwMDAwMDAwMDAwMDAwMDAwMDAwMDAzMDk5NTBZMBMGByqGSM49AgEGCCqGSM49AwEHA0IABOyOsVYZzQY6ZWBe6CaaYXOqW9hc+WGTAIx1zJPQXw2RW1+Xp8dfNO1sV+I6ho8L73L3e3/RvSyZC73d3UUEKN+jazBpMB8GA1UdIwQYMBaAFK86bAvGg+vfM7W6a8nluW4KaMyvMB0GA1UdDgQWBBSckuC9eUHD1i29kzzQ3rfhgVbaqzAOBgNVHQ8BAf8EBAMCB4AwFwYDVR0gAQH/BA0wCzAJBgdnRIBAgEBMAoGCCqGSM49BAMCA0gAMEUCIHPceNKEuYDE3jkqjtceEB2ol/cimWoIA51jGC5hhqhYAiEAhz11sJUNpPevPCd8i5a08U+VLPXY/fvUvR8C6Y9XPA8wggLJMIIcB6ADAgECAhBYZ3wyc4kb0hv8uYDONcsLMAoGCCqGSM49BAMCMEQxGDAWBgNVBAOTD0dTTSBBc3NvY2IhdGlvbGJlEoMCYGA1UEAxMfR1NNIEFzc29jaWF0aW9uI0gUINQMIBSb290IENJMTAEfW0xOTA0MTEwMDAwMDAwMDAwMDAwMDAwMDAwMDAwMDAzMDk5NTBZMBMGByqGSM49AgEGCCqGSM49AwEHA0IABOyOsVYZzQY6ZWBe6CaaYXOqW9hc+WGTAIx1zJPQXw2RW1+Xp8dfNO1sV+I6ho8L73L3e3/RvSyZC73d3UUEKN+jazBpMB8GA1UdIwQYMBaAFK86bAvGg+vfM7W6a8nluW4KaMyvMB0GA1UdDgQWBBSckuC9eUHD1i29kzzQ3rfhgVbaqzAOBgNVHQ8BAf8EBAMCB4AwFwYDVR0gAQH/BA0wCzAJBgdnRIBAgEBMAoGCCqGSM49BAMCA0gAMEUCIHPceNKEuYDE3jkqjtceEB2ol/cimWoIA51jGC5hhqhYAiEAhz11sJUNpPevPCd8i5a08U+VLPXY/fvUvR8C6Y9XPA8wggLJMIIcB6ADAgECAhBYZ3wyc4kb0hv8uYDONcsLMAoGCCqGSM49BAMCMEQxGDAWBgNVBAOTD0dTTSBBc3NvY2IhdGlvbGJlEoMCYGA1UEAxMfR1NNIEFzc29jaWF0aW9uI0gUINQMIBSb290IENJMTAEfW0xOTA0MTEwMDAwMDAwMDAwMDAwMDAwMDAwMDAwMDAzMDk5NTBZMBMGByqGSM49AgEGCCqGSM49AwEHA0IABOyOsVYZzQY6ZWBe6CaaYXOqW9hc+WGTAIx1zJPQXw2RW1+Xp8dfNO1sV+I6ho8L73L3e3/RvSyZC73d3UUEKN+jazBpMB8GA1UdIwQYMBaAFK86bAvGg+vfM7W6a8nluW4KaMyvMB0GA1UdDgQWBBSckuC9eUHD1i29kzzQ3rfhgVbaqzAOBgNVHQ8BAf8EBAMCB4AwFwYDVR0gAQH/BA0wCzAJBgdnRIBAgEBMAoGCCqGSM49BAMCA0gAMEUCIHPceNKEuYDE3jkqjtceEB2ol/cimWoIA51jGC5hhqhYAiEAhz11sJUNpPevPCd8i5a08U+VLPXY/fvUvR8C6Y9XPA8wggLJMIIcB6ADAgECAhBYZ3wyc4kb0hv8uYDONcsLMAoGCCqGSM49BAMCMEQxGDAWBgNVBAOTD0dTTSBBc3NvY2IhdGlvbGJlEoMCYGA1UEAxMfR1NNIEFzc29jaWF0aW9uI0gUINQMIBSb290IENJMTAEfW0xOTA0MTEwMDAwMDAwMDAwMDAwMDAwMDAwMDAwMDAzMDk5NTBZMBMGByqGSM49AgEGCCqGSM49AwEHA0IABOyOsVYZzQY6ZWBe6CaaYXOqW9hc+WGTAIx1zJPQXw2RW1+Xp8dfNO1sV+I6ho8L73L3e3/RvSyZC73d3UUEKN+jazBpMB8GA1UdIwQYMBaAFK86bAvGg+vfM7W6a8nluW4KaMyvMB0GA1UdDgQWBBSckuC9eUHD1i29kzzQ3rfhgVbaqzAOBgNVHQ8BAf8EBAMCB4AwFwYDVR0gAQH/BA0wCzAJBgdnRIBAgEBMAoGCCqGSM49BAMCA0gAMEUCIHPceNKEuYDE3jkqjtceEB2ol/cimWoIA51jGC5hhqhYAiEAhz11sJUNpPevPCd8i5a08U+VLPXY/fvUvR8C6Y9XPA8wggLJMIIcB6ADAgECAhBYZ3wyc4kb0hv8uYDONcsLMAoGCCqGSM49BAMCMEQxGDAWBgNVBAOTD0dTTSBBc3NvY2IhdGlvbGJlEoMCYGA1UEAxMfR1NNIEFzc29jaWF0aW9uI0gUINQMIBSb290IENJMTAEfW0xOTA0MTEwMDAwMDAwMDAwMDAwMDAwMDAwMDAwMDAzMDk5NTBZMBMGByqGSM49AgEGCCqGSM49AwEHA0IABOyOsVYZzQY6ZWBe6CaaYXOqW9hc+WGTAIx1zJPQXw2RW1+Xp8dfNO1sV+I6ho8L73L3e3/RvSyZC73d3UUEKN+jazBpMB8GA1UdIwQYMBaAFK86bAvGg+vfM7W6a8nluW4KaMyvMB0GA1UdDgQWBBSckuC9eUHD1i29kzzQ3rfhgVbaqzAOBgNVHQ8BAf8EBAMCB4AwFwYDVR0gAQH/BA0wCzAJBgdnRIBAgEBMAoGCCqGSM49BAMCA0gAMEUCIHPceNKEuYDE3jkqjtceEB2ol/cimWoIA51jGC5hhqhYAiEAhz11sJUNpPevPCd8i5a08U+VLPXY/fvUvR8C6Y9XPA8wggLJMIIcB6ADAgECAhBYZ3wyc4kb0hv8uYDONcsLMAoGCCqGSM49BAMCMEQxGDAWBgNVBAOTD0dTTSBBc3NvY2IhdGlvbGJlEoMCYGA1UEAxMfR1NNIEFzc29jaWF0aW9uI0gUINQMIBSb290IENJMTAEfW0xOTA0MTEwMDAwMDAwMDAwMDAwMDAwMDAwMDAwMDAzMDk5NTBZMBMGByqGSM49AgEGCCqGSM49AwEHA0IABOyOsVYZzQY6ZWBe6CaaYXOqW9hc+WGTAIx1zJPQXw2RW1+Xp8dfNO1sV+I6ho8L73L3e3/RvSyZC73d3UUEKN+jazBpMB8GA1UdIwQYMBaAFK86bAvGg+vfM7W6a8nluW4KaMyvMB0GA1UdDgQWBBSckuC9eUHD1i29kzzQ3rfhgVbaqzAOBgNVHQ8BAf8EBAMCB4AwFwYDVR0gAQH/BA0wCzAJBgdnRIBAgEBMAoGCCqGSM49BAMCA0gAMEUCIHPceNKEuYDE3jkqjtceEB2ol/cimWoIA51jGC5hhqhYAiEAhz11sJUNpPevPCd8i5a08U+VLPXY/fvUvR8C6Y9XPA8wggLJMIIcB6ADAgECAhBYZ3wyc4kb0hv8uYDONcsLMAoGCCqGSM49BAMCMEQxGDAWBgNVBAOTD0dTTSBBc3NvY2IhdGlvbGJlEoMCYGA1UEAxMfR1NNIEFzc29jaWF0aW9uI0gUINQMIBSb290IENJMTAEfW0xOTA0MTEwMDAwMDAwMDAwMDAwMDAwMDAwMDAwMDAzMDk5NTBZMBMGByqGSM49AgEGCCqGSM49AwEHA0IABOyOsVYZzQY6ZWBe6CaaYXOqW9hc+WGTAIx1zJPQXw2RW1+Xp8dfNO1sV+I6ho8L73L3e3/RvSyZC73d3UUEKN+jazBpMB8GA1UdIwQYMBaAFK86bAvGg+vfM7W6a8nluW4KaMyvMB0GA1UdDgQWBBSckuC9eUHD1i29kzzQ3rfhgVbaqzAOBgNVHQ8BAf8EBAMCB4AwFwYDVR0gAQH/BA0wCzAJBgdnRIBAgEBMAoGCCqGSM49BAMCA0gAMEUCIHPceNKEuYDE3jkqjtceEB2ol/cimWoIA51jGC5hhqhYAiEAhz11sJUNpPevPCd8i5a08U+VLPXY/fvUvR8C6Y9XPA8wggLJMIIcB6ADAgECAhBYZ3wyc4kb0hv8uYDONcsLMAoGCCqGSM49BAMCMEQxGDAWBgNVBAOTD0dTTSBBc3NvY2IhdGlvbGJlEoMCYGA1UEAxMfR1NNIEFzc29jaWF0aW9uI0gUINQMIBSb290IENJMTAEfW0xOTA0MTEwMDAwMDAwMDAwMDAwMDAwMDAwMDAwMDAzMDk5NTBZMBMGByqGSM49AgEGCCqGSM49AwEHA0IABOyOsVYZzQY6ZWBe6CaaYXOqW9hc+WGTAIx1zJPQXw2RW1+Xp8dfNO1sV+I6ho8L73L3e3/RvSyZC73d3UUEKN+jazBpMB8GA1UdIwQYMBaAFK86bAvGg+vfM7W6a8nluW4KaMyvMB0GA1UdDgQWBBSckuC9eUHD1i29kzzQ3rfhgVbaqzAOBgNVHQ8BAf8EBAMCB4AwFwYDVR0gAQH/BA0wCzAJBgdnRIBAgEBMAoGCCqGSM49BAMCA0gAMEUCIHPceNKEuYDE3jkqjtceEB2ol/cimWoIA51jGC5hhqhYAiEAhz11sJUNpPevPCd8i5a08U+VLPXY/fvUvR8C6Y9XPA8wggLJMIIcB6ADAgECAhBYZ3wyc4kb0hv8uYDONcsLMAoGCCqGSM49BAMCMEQxGDAWBgNVBAOTD0dTTSBBc3NvY2IhdGlvbGJlEoMCYGA1UEAxMfR1NNIEFzc29jaWF0aW9uI0gUINQMIBSb290IENJMTAEfW0xOTA0MTEwMDAwMDAwMDAwMDAwMDAwMDAwMDAwMDAzMDk5NTBZMBMGByqGSM49AgEGCCqGSM49AwEHA0IABOyOsVYZzQY6ZWBe6CaaYXOqW9hc+WGTAIx1zJPQXw2RW1+Xp8dfNO1sV+I6ho8L73L3e3/RvSyZC73d3UUEKN+jazBpMB8GA1UdIwQYMBaAFK86bAvGg+vfM7W6a8nluW4KaMyvMB0GA1UdDgQWBBSckuC9eUHD1i29kzzQ3rfhgVbaqzAOBgNVHQ8BAf8EBAMCB4AwFwYDVR0gAQH/BA0wCzAJBgdnRIBAgEBMAoGCCqGSM49BAMCA0gAMEUCIHPceNKEuYDE3jkqjtceEB2ol/cimWoIA51jGC5hhqhYAiEAhz11sJUNpPevPCd8i5a08U+VLPXY/fvUvR8C6Y9XPA8wggLJMIIcB6ADAgECAhBYZ3wyc4kb0hv8uYDONcsLMAoGCCqGSM49BAMCMEQxGDAWBgNVBAOTD0dTTSBBc3NvY2IhdGlvbGJlEoMCYGA1UEAxMfR1NNIEFzc29jaWF0aW9uI0gUINQMIBSb290IENJMTAEfW0xOTA0MTEwMDAwMDAwMDAwMDAwMDAwMDAwMDAwMDAzMDk5NTBZMBMGByqGSM49AgEGCCqGSM49AwEHA0IABOyOsVYZzQY6ZWBe6CaaYXOqW9hc+WGTAIx1zJPQXw2RW1+Xp8dfNO1sV+I6ho8L73L3e3/RvSyZC73d3UUEKN+jazBpMB8GA1UdIwQYMBaAFK86bAvGg+vfM7W6a8nluW4KaMyvMB0GA1UdDgQWBBSckuC9eUHD1i29kzzQ3rfhgVbaqzAOBgNVHQ8BAf8EBAMCB4AwFwYDVR0gAQH/BA0wCzAJBgdnRIBAgEBMAoGCCqGSM49BAMCA0gAMEUCIHPceNKEuYDE3jkqjtceEB2ol/cimWoIA51jGC5hhqhYAiEAhz11sJUNpPevPCd8i5a08U+VLPXY/fvUvR8C6Y9XPA8wggLJMIIcB6ADAgECAhBYZ3wyc4kb0hv8uYDONcsLMAoGCCqGSM49BAMCMEQxGDAWBgNVBAOTD0dTTSBBc3NvY2IhdGlvbGJlEoMCYGA1UEAxMfR1NNIEFzc29jaWF0aW9uI0gUINQMIBSb290IENJMTAEfW0xOTA0MTEwMDAwMDAwMDAwMDAwMDAwMDAwMDAwMDAzMDk5NTBZMBMGByqGSM49AgEGCCqGSM49AwEHA0IABOyOsVYZzQY6ZWBe6CaaYXOqW9hc+WGTAIx1zJPQXw2RW1+Xp8dfNO1sV+I6ho8L73L3e3/RvSyZC73d3UUEKN+jazBpMB8GA1UdIwQYMBaAFK86bAvGg+vfM7W6a8nluW4KaMyvMB0GA1UdDgQWBBSckuC9eUHD1i29kzzQ3rfhgVbaqzAOBgNVHQ8BAf8EBAMCB4AwFwYDVR0gAQH/BA0wCzAJBgdnRIBAgEBMAoGCCqGSM49BAMCA0gAMEUCIHPceNKEuYDE3jkqjtceEB2ol/cimWoIA51jGC5hhqhYAiEAhz11sJUNpPevPCd8i5a08U+VLPXY/fvUvR8C6Y9XPA8wggLJMIIcB6ADAgECAhBYZ3wyc4kb0hv8uYDONcsLMAoGCCqGSM49BAMCMEQxGDAWBgNVBAOTD0dTTSBBc3NvY2IhdGlvbGJlEoMCYGA1UEAxMfR1NNIEFzc29jaWF0aW9uI0gUINQMIBSb290IENJMTAEfW0xOTA0MTEwMDAwMDAwMDAwMDAwMDAwMDAwMDAwMDAzMDk5NTBZMBMGByqGSM49AgEGCCqGSM49AwEHA0IABOyOsVYZzQY6ZWBe6CaaYXOqW9hc+WGTAIx1zJPQXw2RW1+Xp8dfNO1sV+I6ho8L73L3e3/RvSyZC73d3UUEKN+jazBpMB8GA1UdIwQYMBaAFK86bAvGg+vfM7W6a8nluW4KaMyvMB0GA1UdDgQWBBSckuC9eUHD1i29kzzQ3rfhgVbaqzAOBgNVHQ8BAf8EBAMCB4AwFwYDVR0gAQH/BA0wCzAJBgdnRIBAgEBMAoGCCqGSM49BAMCA0gAMEUCIHPceNKEuYDE3jkqjtceEB2ol/cimWoIA51jGC5hhqhYAiEAhz11sJUNpPevPCd8i5a08U+VLPXY/fvUvR8C6Y9XPA8wggLJMIIcB6ADAgECAhBYZ3wyc4kb0hv8uYDONcsLMAoGCCqGSM49BAMCMEQxGDAWBgNVBAOTD0dTTSBBc3NvY2IhdGlvbGJlEoMCYGA1UEAxMfR1NNIEFzc29jaWF0aW9uI0gUINQMIBSb290IENJMTAEfW0xOTA0MTEwMDAwMDAwMDAwMDAwMDAwMDAwMDAwMDAzMDk5NTBZMBMGByqGSM49AgEGCCqGSM49AwEHA0IABOyOsVYZzQY6ZWBe6CaaYXOqW9hc+WGTAIx1zJPQXw2RW1+Xp8dfNO1sV+I6ho8L73L3e3/RvSyZC73d3UUEKN+jazBpMB8GA1UdIwQYMBaAFK86bAvGg+vfM7W6a8nluW4KaMyvMB0GA1UdDgQWBBSckuC9eUHD1i29kzzQ3rfhgVbaqzAOBgNVHQ8BAf8EBAMCB4AwFwYDVR0gAQH/BA0wCzAJBgdnRIBAgEBMAoGCCqGSM49BAMCA0gAMEUCIHPceNKEuYDE3jkqjtceEB2ol/cimWoIA51jGC5hhqhYAiEAhz11sJUNpPevPCd8i5a08U+VLPXY/fvUvR8C6Y9XPA8wggLJMIIcB6ADAgECAhBYZ3wyc4kb0hv8uYDONcsLMAoGCCqGSM49BAMCMEQxGDAWBgNVBAOTD0dTTSBBc3NvY2IhdGlvbGJlEoMCYGA1UEAxMfR1NNIEFzc29jaWF0aW9uI0gUINQMIBSb290IENJMTAEfW0xOTA0MTEwMDAwMDAwMDAwMDAwMDAwMDAwMDAwMDAzMDk5NTBZMBMGByqGSM49AgEGCCqGSM49AwEHA0IABOyOsVYZzQY6ZWBe6CaaYXOqW9hc+WGTAIx1zJPQXw2RW1+Xp8dfNO1sV+I6ho8L73L3e3/RvSyZC73d3UUEKN+jazBpMB8GA1UdIwQYMBaAFK86bAvGg+vfM7W6a8nluW4KaMyvMB0GA1UdDgQWBBSckuC9eUHD1i29kzzQ3rfhgVbaqzAOBgNVHQ8BAf8EBAMCB4AwFwYDVR0gAQH/BA0wCzAJBgdnRIBAgEBMAoGCCqGSM49BAMCA0gAMEUCIHPceNKEuYDE3jkqjtceEB2ol/cimWoIA51jGC5hhqhYAiEAhz11sJUNpPevPCd8i5a08U+VLPXY/fvUvR8C6Y9XPA8wggLJMIIcB6ADAgECAhBYZ3wyc4kb0hv8uYDONcsLMAoGCCqGSM49BAMCMEQxGDAWBgNVBAOTD0dTTSBBc3NvY2IhdGlvbGJlEoMCYGA1UEAxMfR1NNIEFzc29jaWF0aW9uI0gUINQMIBSb290IENJMTAEfW0xOTA0MTEwMDAwMDAwMDAwMDAwMDAwMDAwMDAwMDAzMDk5NTBZMBMGByqGSM49AgEGCCqGSM49AwEHA0IABOyOsVYZzQY6ZWBe6CaaYXOqW9hc+WGTAIx1zJPQXw2RW1+Xp8dfNO1sV+I6ho8L73L3e3/RvSyZC73d3UUEKN+jazBpMB8GA1UdIwQYMBaAFK86bAvGg+vfM7W6a8nluW4KaMyvMB0GA1UdDgQWBBSckuC9eUHD1i29kzzQ3rfhgVbaqzAOBgNVHQ8BAf8EBAMCB4AwFwYDVR0gAQH/BA0wCzAJBgdnRIBAgEBMAoGCCqGSM49BAMCA0gAMEUCIHPceNKEuYDE3jkqjtceEB2ol/cimWoIA51jGC5hhqhYAiEAhz11sJUNpPevPCd8i5a08U+VLPXY/fvUvR8C6Y9XPA8wggLJMIIcB6ADAgECAhBYZ3wyc4kb0hv8uYDONcsLMAoGCCqGSM49BAMCMEQxGDAWBgNVBAOTD0dTTSBBc3NvY2IhdGlvbGJlEoMCYGA1UEAxMfR1NNIEFzc29jaWF0aW9uI0gUINQMIBSb290IENJMTAEfW0xOTA0MTEwMDAwMDAwMDAwMDAwMDAwMDAwMDAwMDAzMDk5NTBZMBMGByqGSM49AgEGCCqGSM49AwEHA0IABOyOsVYZzQY6ZWBe6CaaYXOqW9hc+WGTAIx1zJPQXw2RW1+Xp8dfNO1sV+I6ho8L73L3e3/RvSyZC73d3UUEKN+jazBpMB8GA1UdIwQYMBaAFK86bAvGg+vfM7W6a8nluW4KaMyvMB0GA1UdDgQWBBSckuC9eUHD1i29kzzQ3rfhgVbaqzAOBgNVHQ8BAf8EBAMCB4AwFwYDVR0gAQH/BA0wCzAJBgdnRIBAgEBMAoGCCqGSM49BAMCA0gAMEUCIHPceNKEuYDE3jkqjtceEB2ol/cimWoIA51jGC5hhqhYAiEAhz11sJUNpPevPCd8i5a08U+VLPXY/fvUvR8C6Y9XPA8wggLJMIIcB6ADAgECAhBYZ3wyc4kb0hv8uYDONcsLMAoGCCqGSM49BAMCMEQxGDAWBgNVBAOTD0dTTSBBc3NvY2IhdGlvbGJlEoMCYGA1UEAxMfR1NNIEFzc29jaWF0aW9uI0gUINQMIBSb290IENJMTAEfW0xOTA0MTEwMDAwMDAwMDAwMDAwMDAwMDAwMDAwMDAzMDk5NTBZMBMGByqGSM49AgEGCCqGSM49AwEHA0IABOyOsVYZzQY6ZWBe6CaaYXOqW9hc+WGTAIx1zJPQXw2RW1+Xp8dfNO1sV+I6ho8L73L3e3/RvSyZC73d3UUEKN+jazBpMB8GA1UdIwQYMBaAFK86bAvGg+vfM7W6a8nluW4KaMyvMB0GA1UdDgQWBBSckuC9eUHD1i29kzzQ3rfhgVbaqzAOBgNVHQ8BAf8EBAMCB4AwFwYDVR0gAQH/BA0wCzAJBgdnRIBAgEBMAoGCCqGSM49BAMCA0gAMEUCIHPceNKEuYDE3jkqjtceEB2ol/cimWoIA51jGC5hhqhYAiEAhz11sJUNpPevPCd8i5a08U+VLPXY/fvUvR8C6Y9XPA8wggLJMIIcB6ADAgECAhBYZ3wyc4kb0hv8uYDONcsLMAoGCCqGSM49BAMCMEQxGDAWBgNVBAOTD0dTTSBBc3NvY2IhdGlvbGJlEoMCYGA1UEAxMfR1NNIEFzc29jaWF0aW9uI0gUINQMIBSb290IENJMTAEfW0xOTA0MTEwMDAwMDAwMDAwMDAwMDAwMDAwMDAwMDAzMDk5NTBZMBMGByqGSM49AgEGCCqGSM49AwEHA0IABOyOsVYZzQY6ZWBe6CaaYXOqW9hc+WGTAIx1zJPQXw2RW1+Xp8dfNO1sV+I6ho8L73L3e3/RvSyZC73d3UUEKN+jazBpMB8GA1UdIwQYMBaAFK86bAvGg+vfM7W6a8nluW4KaMyvMB0GA1UdDgQWBBSckuC9eUHD1i29kzzQ3rfhgVbaqzAOBgNVHQ8BAf8EBAMCB4AwFwYDVR0gAQH/BA0wCzAJBgdnRIBAgEBMAoGCCqGSM49BAMCA0gAMEUCIHPceNKEuYDE3jkqjtceEB2ol/cimWoIA51jGC5hhqhYAiEAhz11sJUNpPevPCd8i5a08U+VLPXY/fvUvR8C6Y9XPA8wggLJMIIcB6ADAgECAhBYZ3wyc4kb0hv8uYDONcsLMAoGCCqGSM49BAMCMEQxGDAWBgNVBAOTD0dTTSBBc3NvY2IhdGlvbGJlEoMCYGA1UEAxMfR1NNIEFzc29jaWF0aW9uI0gUINQMIBSb290IENJMTAEfW0xOTA0MTEwMDAwMDAwMDAwMDAwMDAwMDAwMDAwMDAzMDk5NTBZMBMGByqGSM49AgEGCCqGSM49AwEHA0IABOyOsVYZzQY6ZWBe6CaaYXOqW9hc+WGTAIx1zJPQXw2RW1+Xp8dfNO1sV+I6ho8L73L3e3/RvSyZC73d3UUEKN+jazBpMB8GA1UdIwQYMBaAFK86bAvGg+vfM7W6a8nluW4KaMyvMB0GA1UdDgQWBBSckuC9eUHD1i29kzzQ3rfhgVbaqzAOBgNVHQ8BAf8EBAMCB4AwFwYDVR0gAQH/BA0wCzAJBgdnRIBAgEBMAoGCCqGSM49BAMCA0gAMEUCIHPceNKEuYDE3jkqjtceEB2ol/cimWoIA51jGC5hhqhYAiEAhz11sJUNpPevPCd8i5a08U+VLPXY/fvUvR8C6Y9XPA8wggLJMIIcB6ADAgECAhBYZ3wyc4kb0hv8uYDONcsLMAoGCCqGSM49BAMCMEQxGDAWBgNVBAOTD0dTTSBBc3NvY2IhdGlvbGJlEoMCYGA1UEAxMfR1NNIEFzc29jaWF0aW9uI0gUINQMIBSb290IENJMTAEfW0xOTA0MTEwMDAwMDAwMDAwMDAwMDAwMDAwMDAwMDAzMDk5NTBZMBMGByqGSM49AgEGCCqGSM49AwEHA0IABOyOsVYZzQY6ZWBe6CaaYXOqW9hc+WGTAIx1zJPQXw2RW1+Xp8dfNO1sV+I6ho8L73L3e3/RvSyZC73d3UUEKN+jazBpMB8GA1UdIwQYMBaAFK86bAvGg+vfM7W6a8nluW4KaMyvMB0GA1UdDgQWBBSckuC9eUHD1i29kzzQ3rfhgVbaqzAOBgNVHQ8BAf8EBAMCB4AwFwYDVR0gAQH/BA0wCzAJBgdnRIBAgEBMAoGCCqGSM49BAMCA0gAMEUCIHPceNKEuYDE3jkqjtceEB2ol/cimWoIA51jGC5hhqhYAiEAhz11sJUNpPevPCd8i5a08U+VLPXY/fvUvR8C6Y9XPA8wggLJMIIcB6ADAgECAhBYZ3wyc4kb0hv8uYDONcsLMAoGCCqGSM49BAMCMEQxGDAWBgNVBAOTD0dTTSBBc3NvY2IhdGlvbGJlEoMCYGA1UEAxMfR1NNIEFzc29jaWF0aW9uI0gUINQMIBSb290IENJMTAEfW0xOTA0MTEwMDAwMDAwMDAwMDAwMDAwMDAwMDAwMDAzMDk5NTBZMBMGByqGSM49AgEGCCqGSM49AwEHA0IABOyOsVYZzQY6ZWBe6CaaYXOqW9hc+WGTAIx1zJPQXw2RW1+Xp8dfNO1sV+I6ho8L73L3e3/RvSyZC73d3UUEKN+jazBpMB8GA1UdIwQYMBaAFK86bAvGg+vfM7W6a8nluW4KaMyvMB0GA1UdDgQWBBSckuC9eUHD1i29kzzQ3rfhgVbaqzAOBgNVHQ8BAf8EBAMCB4AwFwYDVR0gAQ

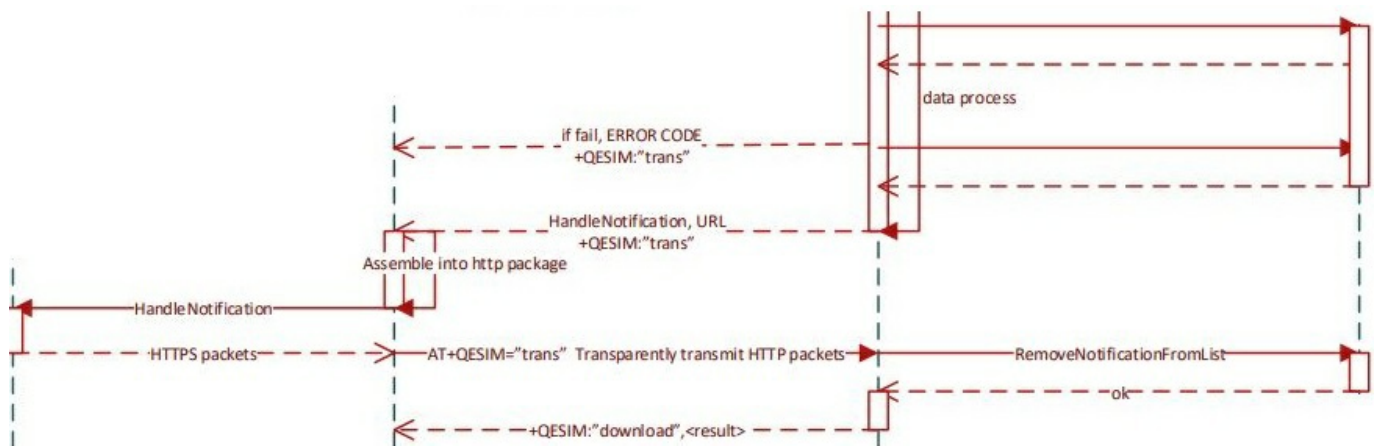
BAgECME0GA1UdHwRGMEQwQqBAoD6GPGh0dHA6Ly9nc21hLWNybc5zeW1hdXRoLmNvbS9vZmZsaW5lY2EvZ3NtYS1yc3AyLXJvb3QtY2kxLmNybDAOBgNVHQ8BAf8EBAMCAQYwNwYDVR0eAQH/BC0wK6ApMCekJTAjMQ4wDAYDVQQKDAVWQUxJRDERMA8GA1UEBRMIODkwMzQwMTEwFAYDVR0RBA0wC4gJKwYBBAGC40wEMB8GA1UdIwQYMBaAFIE3D1EI0LHUCNTDsLm0l55W+v7MAoGCCqGSM49BAMCA0gAMEUCIQDIIjMVONpYB9krm994uZJ2MfX11ZB4jCPOorlfd2XcJAIG2h/eUPzuma4UZ/12j4GOUh1ZeSxQYk2KpMLBvcqt4Y="}

Download Profiles Through AT Commands

HTTPS establishes a connection between the MCU and SM-DP+. The MCU uses the POST method to send data, where the URL and payload are obtained from the result code returned for each step of the module +QESIM: "trans",0,<url>,<payloadlen>,<payload>. The content of the HTTPS header during POST is as follows:

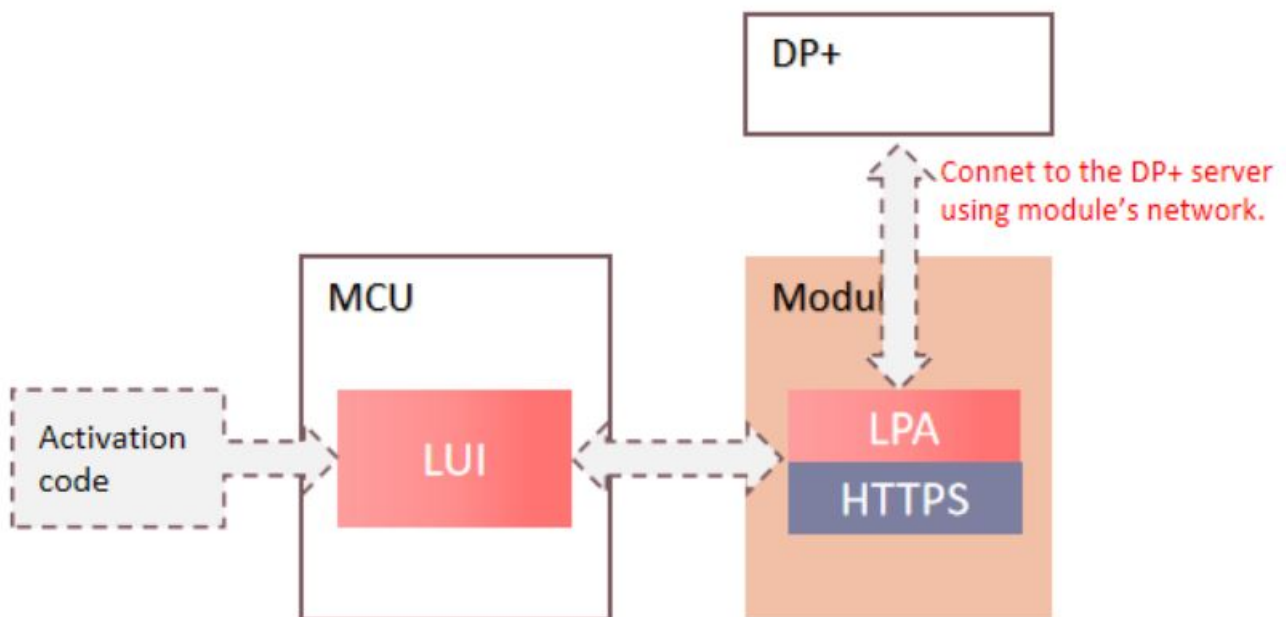
Header	Value
X-Admin-Protocol:	gsma/rsp/v2.2.0
Content-Type:	application/json
charset:	utf-8
User-Agent:	gsma-rsp-lpad
Host:	Host and port, e.g. demo-consumer.validspereachdpplus.com:443
Content-Length:	Content length





Internal Network Mode

In this mode, the module needs to establish a HTTPS connection with DP+. This applies to scenarios where the eUICC has an initial profile and module can use this profile to connect to the network.



AT+QESIM="ota" Download the Profile from DP+ and Install It to the eUICC	
Write Command AT+QESIM="ota",<activationCode>[,<confirmationCode>]	Response OK Or ERROR
	If there is an error related to ME functionality: +CME ERROR: <err>
Maximum Response Time	500 ms
Characteristics	/

Parameter

<activationCode>	String type. From the QR code scan.
<confirmationCode>	String type. A code used to authorize the usage of the MatchingID to confirm the download and installation of the profile.
<result>	Integer type. Result code. Range: 0–3. Please refer to Chapter 5 for specific error information.
<errinfo1>	String type. Error information 1. If <result> is 0, it will not be presented.
<errinfo2>	String type. Error information 2. If <result> is 0, it will not be presented.

Example

AT+QESIM="ota","LPA:1\$testsmddplus.infineon.com\$0000-0000-0000-3003" OK

NOTE
If the Confirmation Code Required Flag in <activationCode> is 1, <confirmationCode> is required. Please refer to Chapter 3.1.3 for the download process.

eSIM Related Notifications

This chapter gives eSIM-related notifications and their descriptions.

Table 3: eSIM Related Notifications

SN	URC Format	Description
[1]	+QESIM: "download",<ret>	The profile download and install process ends. The related resources of the module are released. <ret>: 0 Success 1 Failure
[2]	+QESIM: "trans",0,<url>,<payloadlen>,<payload>	Messages that need to be reported to DP+. <url>: HTTP URL <payloadlen>: The length of <payload>. <payload>: The jason format data that needs to be sent to DP+.
[3]	+QESIM: "trans",<result>[,<errinfo1>,<errinfo2>]	The profile download or installation error. <result>: Result code. Range: 0–3. <errinfo1>: Error information 1 <errinfo2>: Error information 2 Please refer to Chapter 5 for specific error information.
[4]	+QESIM: "ota",<result> [,<errinfo1>,<errinfo2>]	The profile download and install process ends. <result>: Result code. Range: 0–3. <errinfo1>: Error information 1 <errinfo2>: Error information 2 Please refer to Chapter 5 for specific error information.

Summary of Error Codes

If an error occurs in LPA, you can find the cause of the error by the following error code. Result code includes Success, Internal Error, eUICC Error, SMDPP Error. If Result code is 0, it means Success.

Table 4: Internal Error

<result>	<errinfo1>	<errinfo1>
InternalError (1)	Analyse False (99)	0
/	Parm Error (98)	0
/	Http Errorcode (1)	Errorcode (eg. 400,450,500)
/	APDUErr (2)	SW code (eg. 6985,6A82,6700)

Table 5: eUICC Error

<result>	<errinfo1>	<errinfo1>
eUICCError (2)	ProfileInfoListResponse (1)	incorrectInputValues(1), undefinedError(127)
/	PrepareDownloadResponse (2)	invalidCertificate(1), invalidSignature(2), unsupportedCurve(3), noSessionContext(4), invalidTransactionId(5), undefinedError(127)
/	AuthenticateServerResponse (3)	invalidCertificate(1), invalidSignature(2), unsupportedCurve(3), noSessionContext(4), invalidOid(5), euiccChallengeMismatch(6), ciPKUnknown(7), undefinedError(127)
/	CancelSessionResponse (4)	invalidTransactionId(5),

		undefinedError(127)
/	ProfileInstallationResultData (5)	incorrectInputValues(1), invalidSignature(2), invalidTransactionId(3), unsupportedCrtValues(4), unsupportedRemoteOperationType(5), unsupportedProfileClass(6), scp03tStructureError(7), scp03tSecurityError(8), installFailedDueToIccidAlreadyExistsOnEuicc(9), installFailedDueToInsufficientMemoryForProfile(10), installFailedDueToInterruption(11), installFailedDueToPEProcessingError(12), installFailedDueToDataMismatch(13), testProfileInstallFailedDueToInvalidNaaKey(14), pprNotAllowed(15), installFailedDueToUnknownError(127)
/	listNotificationsResultError (6)	undefinedError(127)
/	setNicknameResult (7)	iccidNotFound (1), undefinedError(127)
/	RetrieveNotificationsListResponse (8)	undefinedError(127)
/	NotificationSentResponse (9)	nothingToDelete(1), undefinedError(127)
/	EnableProfileResponse (10)	iccidOrAidNotFound (1), profileNotInDisabledState(2), disallowedByPolicy(3), wrongProfileReenabling(4), catBusy(5), undefinedError(127)
/	DisableProfileResponse (11)	iccidOrAidNotFound (1), profileNotInEnabledState(2), disallowedByPolicy(3), catBusy(5), undefinedError(127)
/	DisableProfileResponse (11)	iccidOrAidNotFound (1), profileNotInEnabledState(2), disallowedByPolicy(3), catBusy(5), undefinedError(127)
/	DeleteProfileResponse (12)	iccidOrAidNotFound (1), profileNotInDisabledState(2), disallowedByPolicy(3), undefinedError(127)

Table 6: SMDP+ Error

<result>	<errinfo1>	<errinfo1>
SMDPPErr (3)	Subject Code (eg. 8.2)	Reason Code (eg. 3.1)

- At Quectel, our aim is to provide timely and comprehensive services to our customers. If you require any assistance, please contact our headquarters:
- Quectel Wireless Solutions Co., Ltd.
- Building 5, Shanghai Business Park Phase III (Area B), No.1016 Tianlin Road, Minhang District, Shanghai

200233, China

- Tel: +86 21 5108 6236
- **Email:** info@quectel.com
- Or our local offices. For more information, please visit:
- <http://www.quectel.com/support/sales.htm>.
- For technical support, or to report documentation errors, please visit:
- <http://www.quectel.com/support/technical.htm>.
- Or email us at: support@quectel.com.

Legal Notices

We offer information as a service to you. The provided information is based on your requirements and we make every effort to ensure its quality. You agree that you are responsible for using independent analysis and evaluation in designing intended products, and we provide reference designs for illustrative purposes only. Before using any hardware, software or service guided by this document, please read this notice carefully. Even though we employ commercially reasonable efforts to provide the best possible experience, you hereby acknowledge and agree that this document and related services hereunder are provided to you on an “as available” basis. We may revise or restate this document from time to time at our sole discretion without any prior notice to you.

Use and Disclosure Restrictions

License Agreements

Documents and information provided by us shall be kept confidential, unless specific permission is granted. They shall not be accessed or used for any purpose except as expressly provided herein.

Copyright

Our and third-party products hereunder may contain copyrighted material. Such copyrighted material shall not be copied, reproduced, distributed, merged, published, translated, or modified without prior written consent. We and the third party have exclusive rights over copyrighted material. No license shall be granted or conveyed under any patents, copyrights, trademarks, or service mark rights. To avoid ambiguities, purchasing in any form cannot be deemed as granting a license other than the normal non-exclusive, royalty-free license to use the material. We reserve the right to take legal action for noncompliance with abovementioned requirements, unauthorized use, or other illegal or malicious use of the material.

Trademarks

Except as otherwise set forth herein, nothing in this document shall be construed as conferring any rights to use any trademark, trade name or name, abbreviation, or counterfeit product thereof owned by Quectel or any third party in advertising, publicity, or other aspects.

Third-Party Rights

This document may refer to hardware, software and/or documentation owned by one or more third parties (“third-party materials”). Use of such third-party materials shall be governed by all restrictions and obligations applicable thereto.

We make no warranty or representation, either express or implied, regarding the third-party materials, including but not limited to any implied or statutory, warranties of merchantability or fitness for a particular purpose, quiet enjoyment, system integration, information accuracy, and non-infringement of any third-party intellectual property rights with regard to the licensed technology or use thereof. Nothing herein constitutes a representation or warranty by us to either develop, enhance, modify, distribute, market, sell, offer for sale, or otherwise maintain production of any our products or any other hardware, software, device, tool, information, or product. We moreover disclaim any and all warranties arising from the course of dealing or usage of trade.

Privacy Policy


To implement module functionality, certain device data are uploaded to Quectel’s or third-party’s servers, including

carriers, chipset suppliers or customer-designated servers. Quectel, strictly abiding by the relevant laws and regulations, shall retain, use, disclose or otherwise process relevant data for the purpose of performing the service only or as permitted by applicable laws. Before data interaction with third parties, please be informed of their privacy and data security policy.

Disclaimer

- a) We acknowledge no liability for any injury or damage arising from reliance upon the information.
- b) We shall bear no liability resulting from any inaccuracies or omissions, or from the use of the information contained herein.
- c) While we have made every effort to ensure that the functions and features under development are free from errors, it is possible that they could contain errors, inaccuracies, and omissions. Unless otherwise provided by valid agreement, we make no warranties of any kind, either implied or express, and exclude all liability for any loss or damage suffered in connection with the use of features and functions under development, to the maximum extent permitted by law, regardless of whether such loss or damage may have been foreseeable.
- d) We are not responsible for the accessibility, safety, accuracy, availability, legality, or completeness of information, advertising, commercial offers, products, services, and materials on third-party websites and third-party resources.
- Copyright © Quectel Wireless Solutions Co., Ltd. 2022. All rights reserved.

Documents / Resources

	<p>QUECTEL EC25-E LTE Standard Module [pdf] Instruction Manual EC25-E, EC25-E LTE Standard Module, LTE Standard Module, Standard Module, Module</p>
---	---

References

-  [Contact | Quectel](#)
-  [|](#)