

QUECTEL BG95-M3 Multimode Cat M1 or NB2 Module Instructions

[Home](#) » [QUECTEL](#) » QUECTEL BG95-M3 Multimode Cat M1 or NB2 Module Instructions 



Contents

- [1 BG95-M3 Multimode Cat M1 or NB2 Module](#)
- [2 Here is the steps.](#)
- [3 Documents / Resources](#)
- [4 Related Posts](#)

BG95-M3 Multimode Cat M1 or NB2 Module

Instruction for Tool_For_BG95M3_M5_600L_Erase_EFS2APPS

When you see your device (BG95 inside) running into a continuously reboot loop. It may cause by something in DAM app crashing module. you need try to remove it from datatx folder in anyway. Then you will have chance to modify the dam app code and reload and run it. Here are two methods:

1. Use AT command to disable dam app loading If you have enough time to send AT to the module every time you start the device, you can execute the following command to disable DAM app.
`AT+QCFGEXT = "quecopen",1 // disable dam app set 0,enable APP datatx dir will generate oem_app_disable.ini, restart the device, DAM app will no longer be loaded.`
2. Use the qfirehose Erase file of the corresponding module to erase the dam app
"Tool_For_BG95M1/3_Erase_EFS2APPS.zip" is designed to clear up /datatx folder to remove .bin file.

Here is the steps.

1. connect module pin75 to 1.8V.

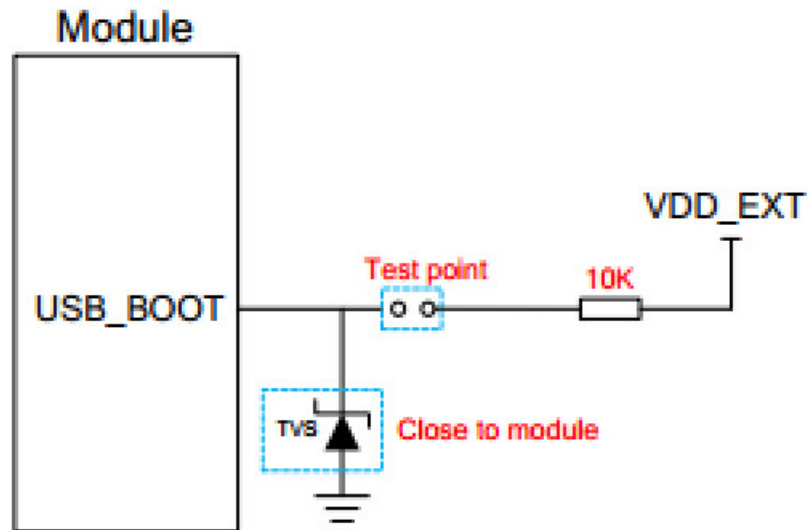
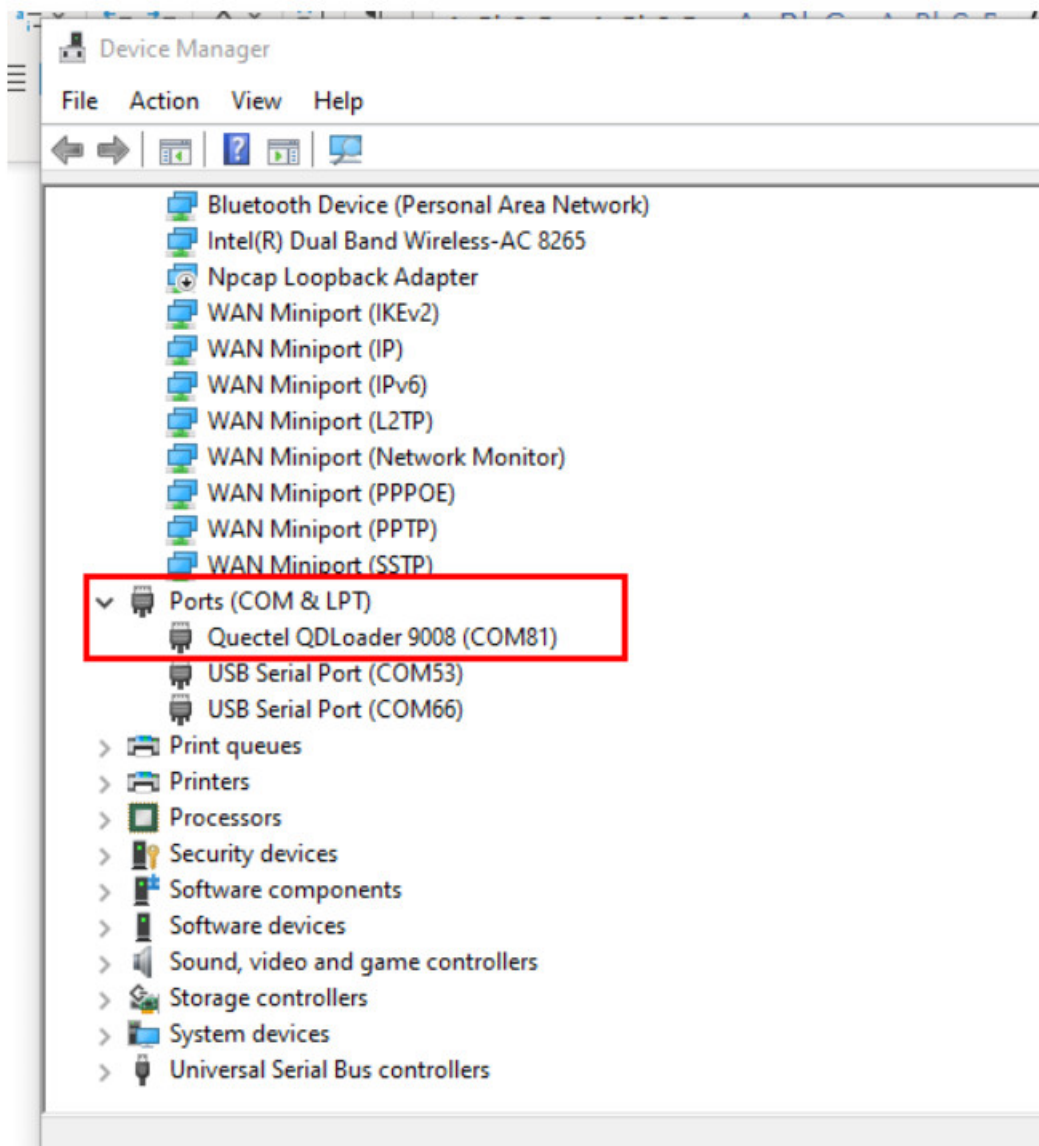


Figure 24: Reference Design of USB_BOOT Interface

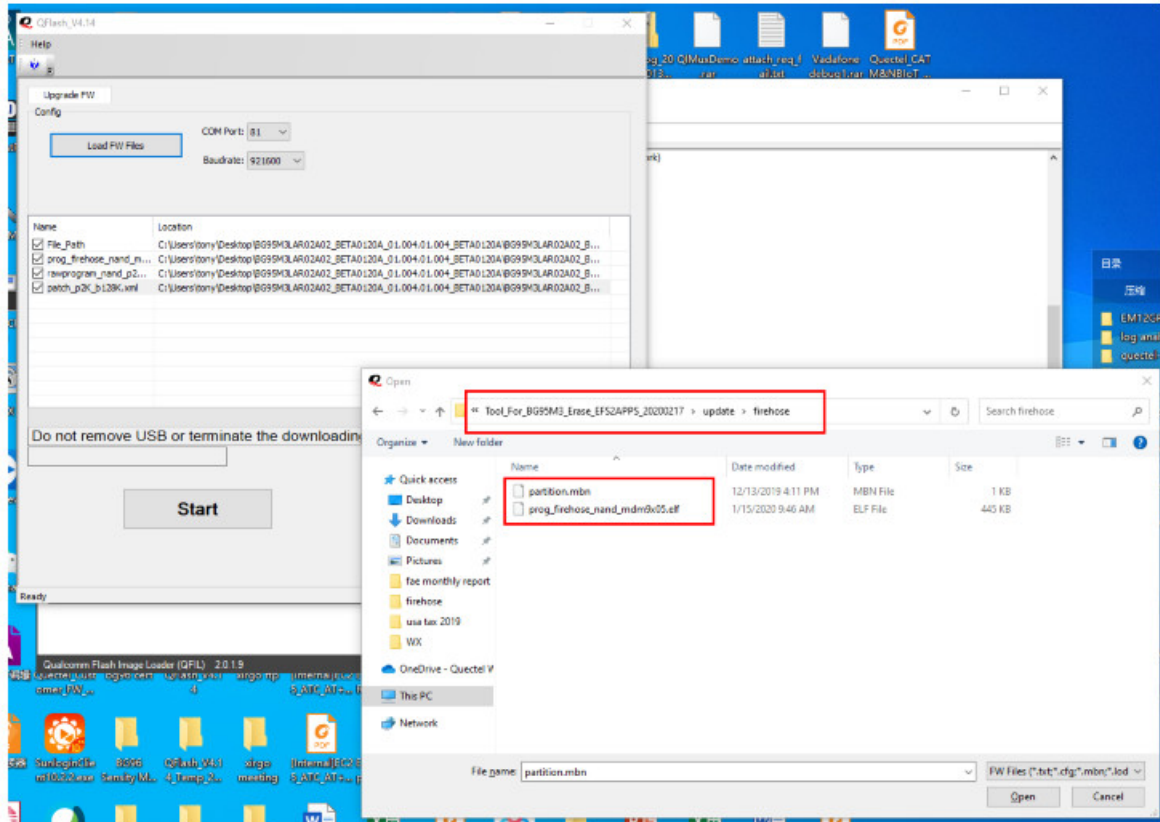
2. power cycle module. wait until you see QDloader 9008 port.



3. disconnect usb_boot pin75 from 1.8v

4. use Qflash tool to select any file in

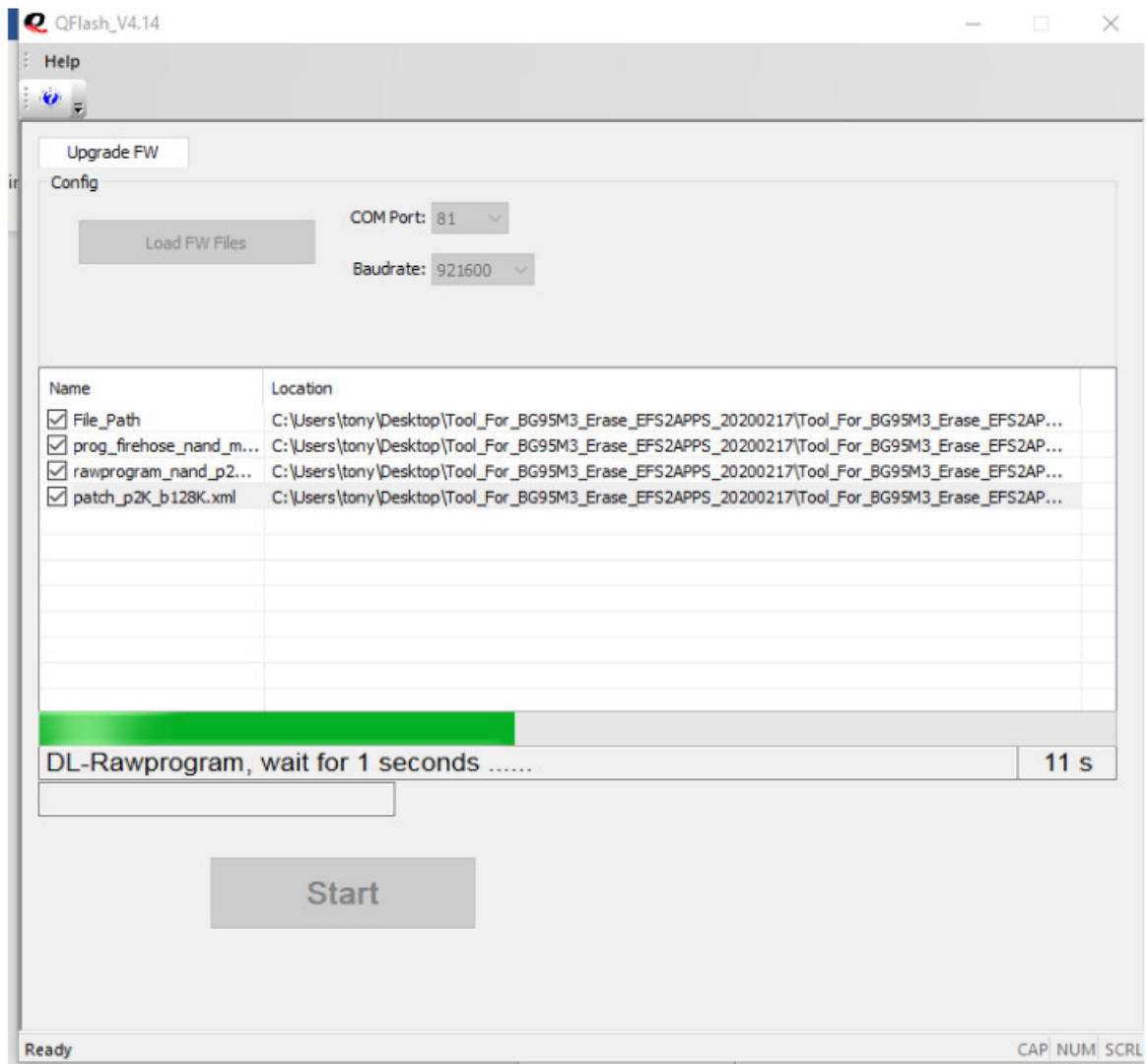
\\Tool_For_BG95M1(3)_Erase_EFS2APPS_20200217\\Tool_For_BG95M3_Erase_EFS2APS_20200217\\update\\fire and select the port as qdloader in qflash, and start. (note , please terminate qpst or qxdm which is grabbing the port)

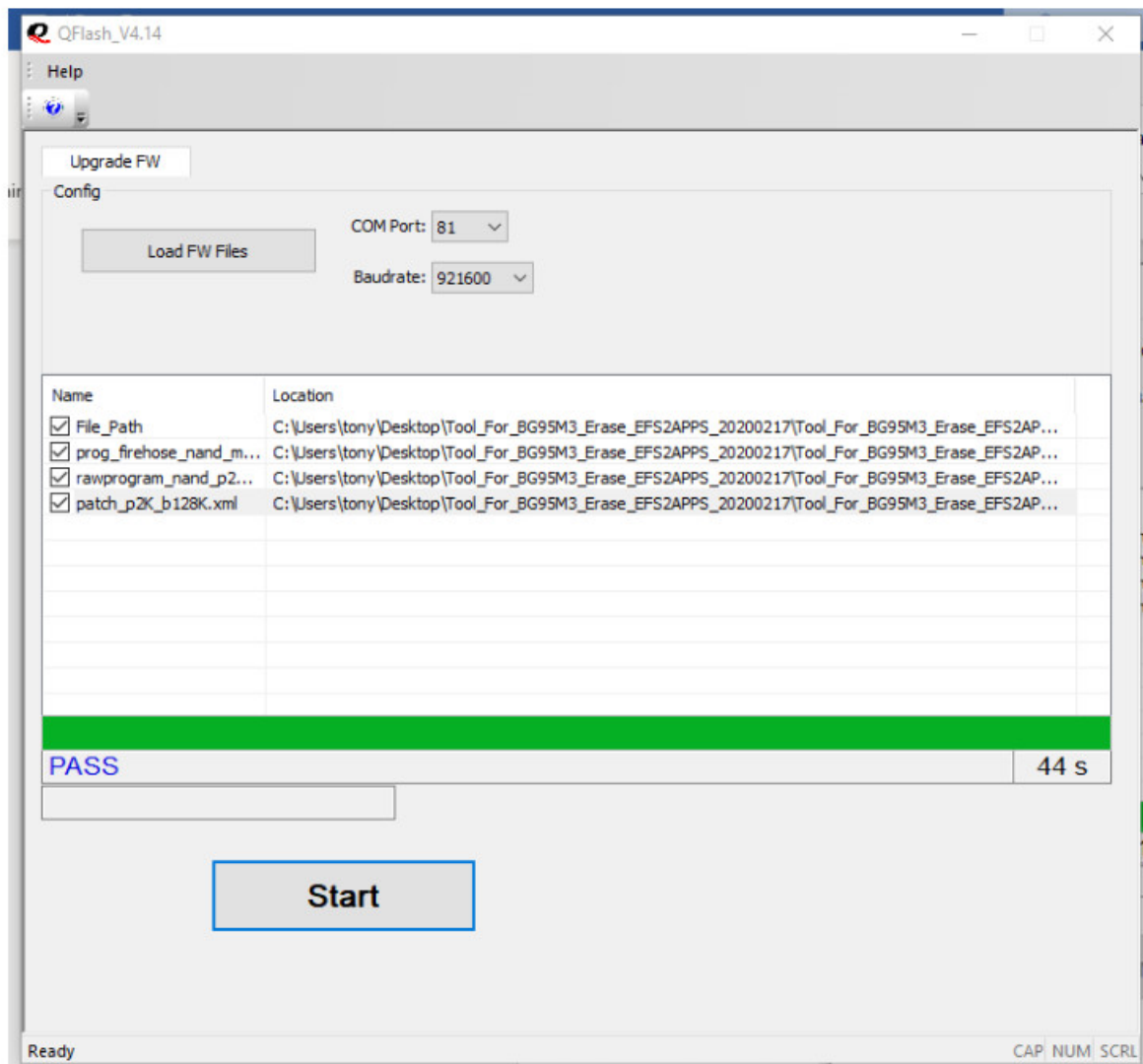


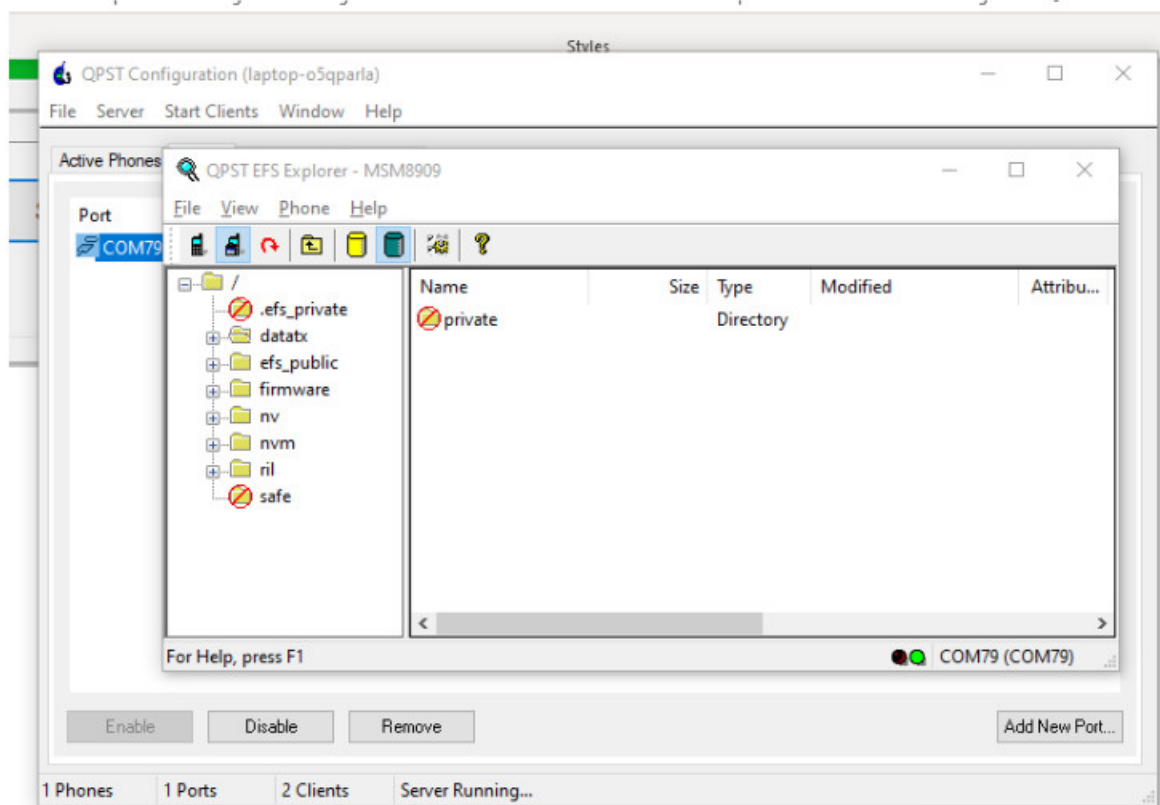
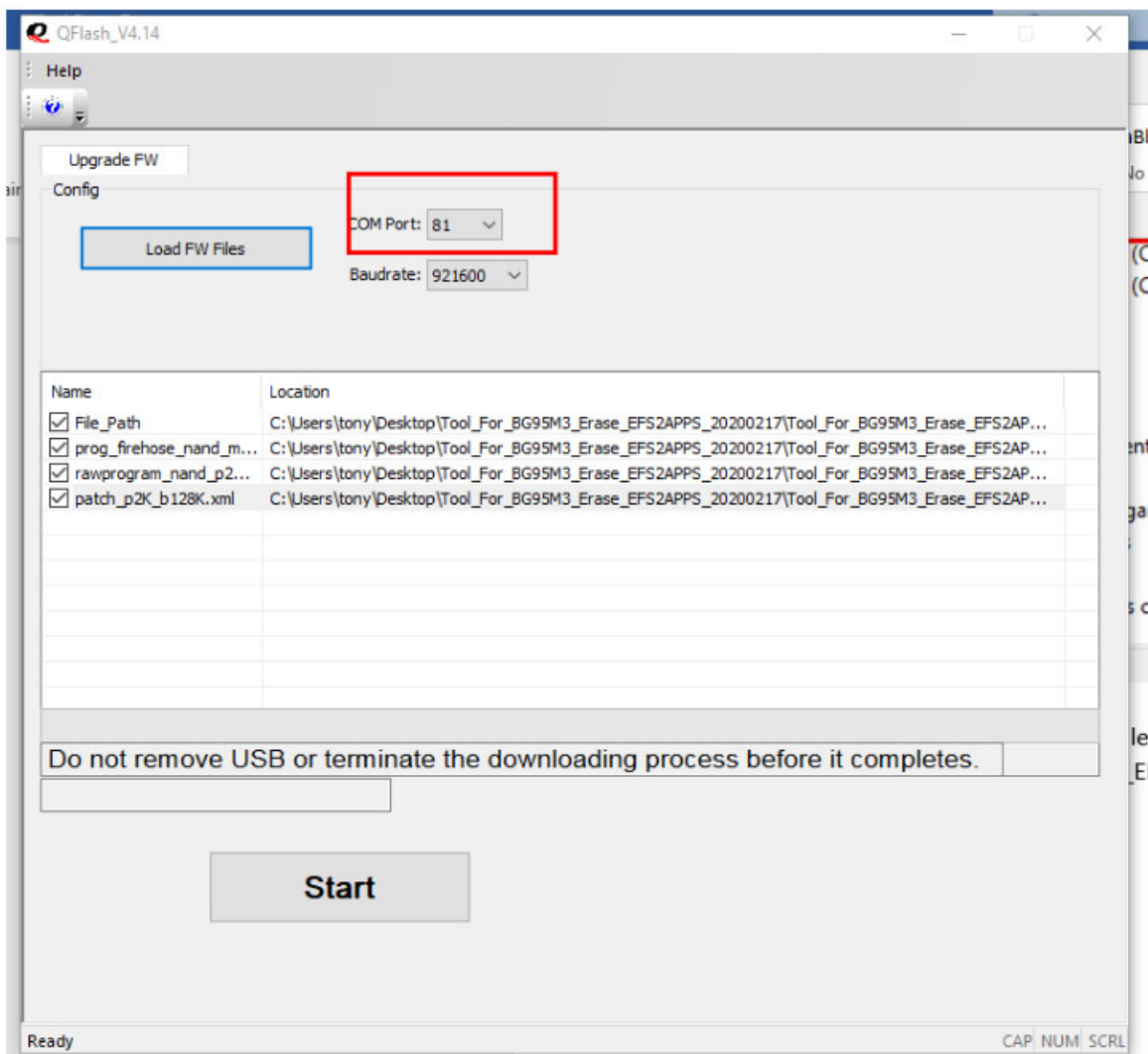
5. you should see the upgrade is ongoing until getting a “pass” result, module will reboot automatically . then all files in /datatx folder are cleared up.
6. The following are qfirehose Erase files, pls select the corresponding version



Tool_For_BG95M3_M5_600L_Erase_EFS2APPS_20200408.zip







<div><div>Information for T42_F4_BG95M3_M1_NB2_2019_0720191</div><div><div>Warning: This document contains confidential information and is intended for internal use only. It is not to be distributed outside the company without prior approval of the appropriate authority. This document is the property of Quectel and is to be kept confidential. If you are not an intended recipient, please do not open, copy, print, or distribute this document. If you have received this document in error, please notify the sender immediately and delete the document from your system. Thank you for your cooperation.</div><div><div>1. Introduction</div><div>2. Safety Precautions</div><div>3. Installation</div><div>4. Operation</div><div>5. Maintenance</div><div>6. Troubleshooting</div><div>7. Appendix</div><div>8. Contact Information</div></div></div></div>	<div><div>QUECTEL BG95-M3 Multimode Cat M1 or NB2 Module [pdf] Instructions</div><div>M3, M5, 600L, BG95-M3, Multimode Cat M1 or NB2 Module, BG95-M3 Multimode Cat M1 or N B2 Module, Cat M1 or NB2 Module, Module</div></div>
---	---