



Qubo QBOOK Automatic Foaming Soap Dispenser Instruction Manual

[Home](#) » [Qubo](#) » Qubo QBOOK Automatic Foaming Soap Dispenser Instruction Manual 

Contents

- [1 Qubo QBOOK Automatic Foaming Soap Dispenser](#)
- [2 Product Information](#)
- [3 What's in the product](#)
- [4 How to install](#)
- [5 How to use](#)
- [6 Troubleshooting](#)
- [7 Documents / Resources](#)
 - [7.1 References](#)
- [8 Related Posts](#)



Qubo QBOOK Automatic Foaming Soap Dispenser



Product Information

Specifications:

- **Product Name:** QBOOK Automatic Foaming Soap Dispenser
- **Power Source:** Battery operated (requires AA alkaline batteries)
- **Installation:** Easy and tool-free
- **Materials:** Durable and water-resistant
- **Weight:** Lightweight and portable

How to Install:

1. Rotate the battery cover to open it.
2. Insert the batteries correctly, aligning the arrow with the red line. Press and tighten clockwise.
3. Insert the soap extract tube into the bottom of the main body.
4. Tighten the liquid soap bottle. Press firmly and tighten clockwise.

How to Use:

1. Turning On:

Press and hold the Power button for 2 seconds.

Look for a white light to stay on for 3 seconds, indicating that the machine is on.

2. Using the Foaming Feature:

Place your hand under the foaming area below the sensor window.

The machine will start working, and you'll see a quick flash of a white light to confirm that it detected your hand and the foaming process will begin.

3. Adjusting Foam Level:

Press once on the Power button once. The white light will flash to show the foam level.

4. Battery Low Indication:

Place your hand under the sensor area.

If the blue light flashes five times, it means the batteries need to be replaced. Low battery power can affect the performance.

5. **Turning Off:**

If you want to turn off the machine, press and hold the Power button for 2 seconds.

DON'Ts:

- Avoid using rough objects such as rough linen, brushes, or steel balls to scrub the product. This can cause damage to the surface. Additionally, do not immerse the product in water or directly rinse it with water as this can lead to short circuits, sensor malfunctions, or product damage.
- Refrain from using strong acid or alkali detergents when cleaning the product. These harsh chemicals can harm the materials and components of the dispenser.
- It is important not to lay the product horizontally or upside down, as this can cause the liquid inside to overflow, affecting the proper functioning of the product.
- Keep the area around the power button dry and clean. Moisture or dirt buildup can interfere with the touch function of the dispenser.
- If you notice bubbles or foreign objects stuck on the sensor window, clean them immediately. Failure to do so may disrupt the normal operation of the product.
- Avoid exposing the unit to direct sunlight or strong light sources as they may interfere with the infrared (IR) sensor system used by the dispenser.
- While allergies are rare, if you experience any allergic reactions, discontinue using the product immediately and seek medical assistance if necessary.
- It is advised not to use soap with particles for mixing or to use thick soap directly with the dispenser. This can cause damage to the dispenser and impact its performance.

Troubleshooting:

1. **Unable to switch on/off:**

Double-check if the battery is installed correctly, paying attention to the positive and negative signs.

Ensure that the battery compartment cover is aligned with the red line card slot and tightly screwed.

Note: When installing or replacing batteries, use high-quality AA alkaline batteries and avoid mixing new and old batteries to preserve battery life and prevent damage to the product.

2. **The indicator is not on:**

Confirm if the product is turned on by performing a 2-second long press.

FAQ:

What type of batteries does the QBOOK Automatic Foaming Soap Dispenser require?

The dispenser requires AA alkaline batteries.

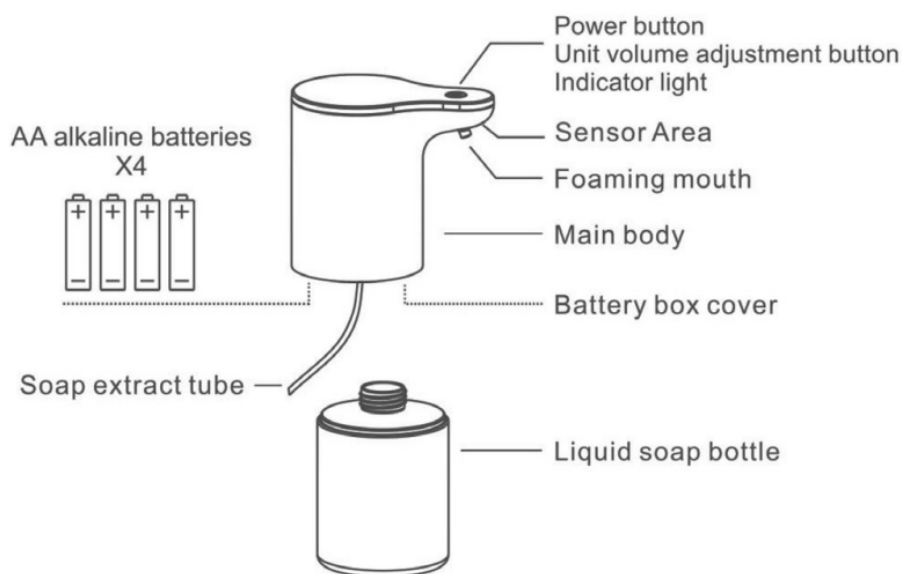
Can I use thick soap directly with the dispenser?

It is not advised to use thick soap directly with the dispenser as it can cause damage to the dispenser and impact its performance.

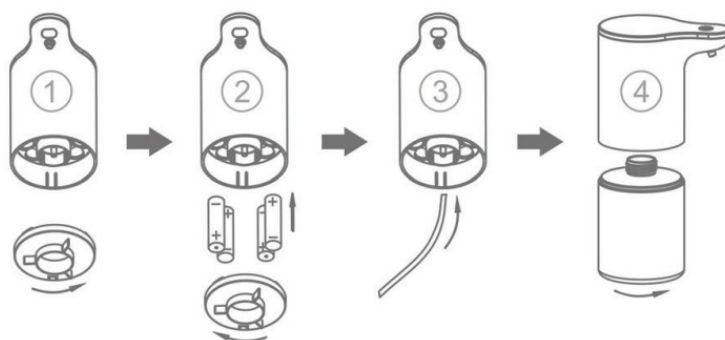
How do I know when the batteries need to be replaced?

If the blue light flashes five times when you place your hand under the sensor area, it means the batteries need to be replaced. Low battery power can affect the machine's performance.

What's in the product



How to install

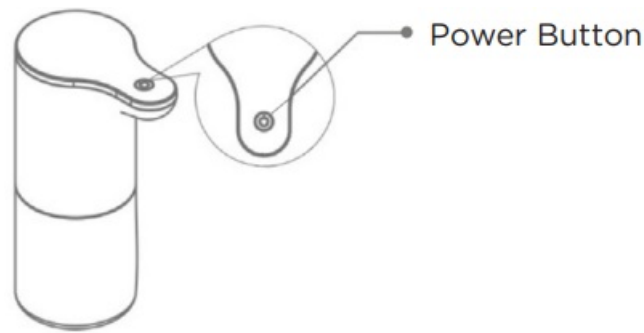


1. Rotate the battery cover to open it.
2. Insert the batteries correctly, aligning the arrow with the red line. Press and tighten clockwise.
3. Insert the soap extract tube into the bottom of the main body.
4. Tighten the liquid soap bottle. Press firmly and tighten clockwise.

How to use

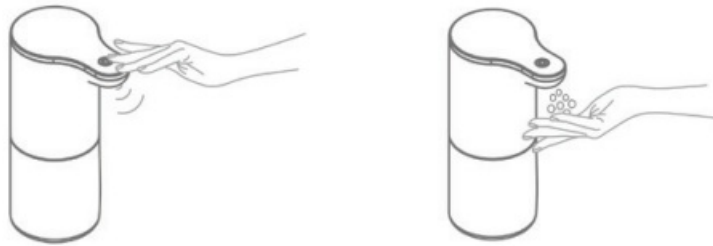
1. Turning On:

1. Press and hold the Power button for 2 seconds.
2. Look for a white light to stay on for 3 seconds, indicating that the machine is on.



2. Using the Foaming Feature:

1. Place your hand under the foaming area below the sensor window.
2. The machine will start working, and you'll see a quick flash of a white light to confirm that it detected your hand and the foaming process will begin.



3. Adjusting Foam Level:

- Press once on the Power button, The white light will flash to show the foam level.
 - **One flash:** less foam (0.8ml)
 - **Two flashes:** medium foam (default level, 1.6ml)
 - **Three flashes:** more foam (2.4ml)
- For Every one press on the Power button, the foam quantity level will be changed. Release your hand to select the desired level.
- When using the dispenser, ensure that you do not remove your hand until the dispensing process is fully complete. The dispenser will continue to dispense its contents until it reaches its pre-set limit; removing your hand prematurely will not halt the dispensing action and would lead to messy spills.

4. Battery Low Indication:

- Place your hand under the sensor area.
- If the blue light flashes five times, it means the batteries need to be replaced. Low battery power can affect the machine's performance.

5. Turning Off:

- If you want to turn off the machine:
 - Make sure it's on.
 - Press and hold the Power button for 2 seconds.
 - Release your hand when the white light turns on.
 - The blue light will flash twice to show that the machine has successfully shut down.
- You don't need to turn off the device for small intervals of no usage but if you won't be using the machine for an extended period of time or if you are storing the device, it's recommended to either turn it off or remove the batteries to avoid battery leakage and potential damage.

6. How to refill:

- Foaming soap can be used directly and is recommended for better results.
- Ordinary gel/liquid soap should be diluted with water in a ratio of 1:3. Stir the solution evenly to eliminate the air in the pump or it will block the pipes and nothing will come out.



Twist & Open



Pour 1 part soap



Mix with 3 parts water*



Close & Use

DONTs



1. Avoid using rough objects such as rough linen, brushes, or steel balls to scrub the product. This can cause damage to the surface. Additionally, do not immerse the product in water or directly rinse it with water as this can lead to short circuits, sensor malfunctions, or product damage.
2. Refrain from using strong acid or alkali detergents when cleaning the product. These harsh chemicals can harm the materials and components of the dispenser.
3. It is important not to lay the product horizontally or upside down, as this can cause the liquid inside to overflow, affecting the proper functioning of the product.
4. Keep the area around the power button dry and clean. Moisture or dirt buildup can interfere with the touch function of the dispenser.
5. If you notice bubbles or foreign objects stuck on the sensor window, clean them immediately. Failure to do so may disrupt the normal operation of the product.
6. Avoid exposing the unit to direct sunlight or strong light sources as they may interfere with the infrared (IR) sensor system used by the dispenser.

7. While allergies are rare, if you experience any allergic reactions, discontinue using the product immediately and seek medical assistance if necessary.
8. It is advised not to use soap with particles for mixing or to use thick soap directly with the dispenser. This can cause damage to the dispenser and impact its performance.

Troubleshooting

1. Unable to switch on/off:

- Double-check if the battery is installed correctly, paying attention to the positive and negative signs.
- Ensure that the battery compartment cover is aligned with the red line card slot and tightly screwed.
- **Note:** When installing or replacing batteries, use high-quality “AA” alkaline batteries and avoid mixing new and old batteries to preserve battery life and prevent damage to the product.

2. The **indicator** is not on:

- Confirm if the product is turned on by performing a 2-second long press.
- Refer back to points 1.1 and 1.2 to verify the proper installation of the battery and battery compartment cover.
- If the indicator light doesn't turn on and there is no foam dispensed when placing your hand near the sensor window, check for any foreign objects, bubbles, or obstructions at the sensor window. Clean the window to remove any foam, water droplets, or fog that may be blocking it.

3. No foaming/poor foaming effect:

- Check if the battery or soap is exhausted. Refer to points 1.1 and 1.2 to ensure the battery and battery compartment cover are correctly installed.
- If you are blending your own soap liquid, the foaming effect may be affected. Adjust the liquid-to-water ratio to 1:3 to improve the foaming performance.


4. The **blue indicator light continuously flashes:**

- Refer back to points 1.1 and 1.2 to confirm the proper installation of the battery and battery compartment cover. Additionally, consider replacing the battery if it is depleted.

Warranty:

This product is not covered under warranty.

Documents / Resources

	<p>Qubo QBOOK Automatic Foaming Soap Dispenser [pdf] Instruction Manual QBOOK, QBOOK Automatic Foaming Soap Dispenser, Automatic Foaming Soap Dispenser, F oaming Soap Dispenser, Soap Dispenser, Dispenser</p>
-----------------------------------------------------------------------------------	-----------------------------------------------------------------------------------------------------------------------------------------------------------------------------------------------------------------------------------------

References

- [User Manual](#)