



QUANTOFIX Phosphate Test Strips User Guide

[Home](#) » [QUANTOFIX](#) » QUANTOFIX Phosphate Test Strips User Guide 

Contents

- [1 QUANTOFIX Phosphate Test Strips](#)
- [2 Pack content](#)
- [3 Measuring range](#)
- [4 Safety precautions](#)
- [5 General indications](#)
- [6 Instructions for use](#)
- [7 Interferences](#)
- [8 Storage](#)
- [9 Documents / Resources](#)
 - [9.1 References](#)
- [10 Related Posts](#)

QUANTOFIX®

QUANTOFIX Phosphate Test Strips



Pack content

- 1 aluminum container with 100 test strips
- 1 bottle PO-1
- 1 bottle PO-2
- 1 measuring vessel with 5 mL mark
- 1 test tube

Measuring range

- Visually 3-100 mg/L PO
- Reflectometrically 3-80 mg/L PO

Color gradation:

0 3 10 25 50 100 mg/L PO

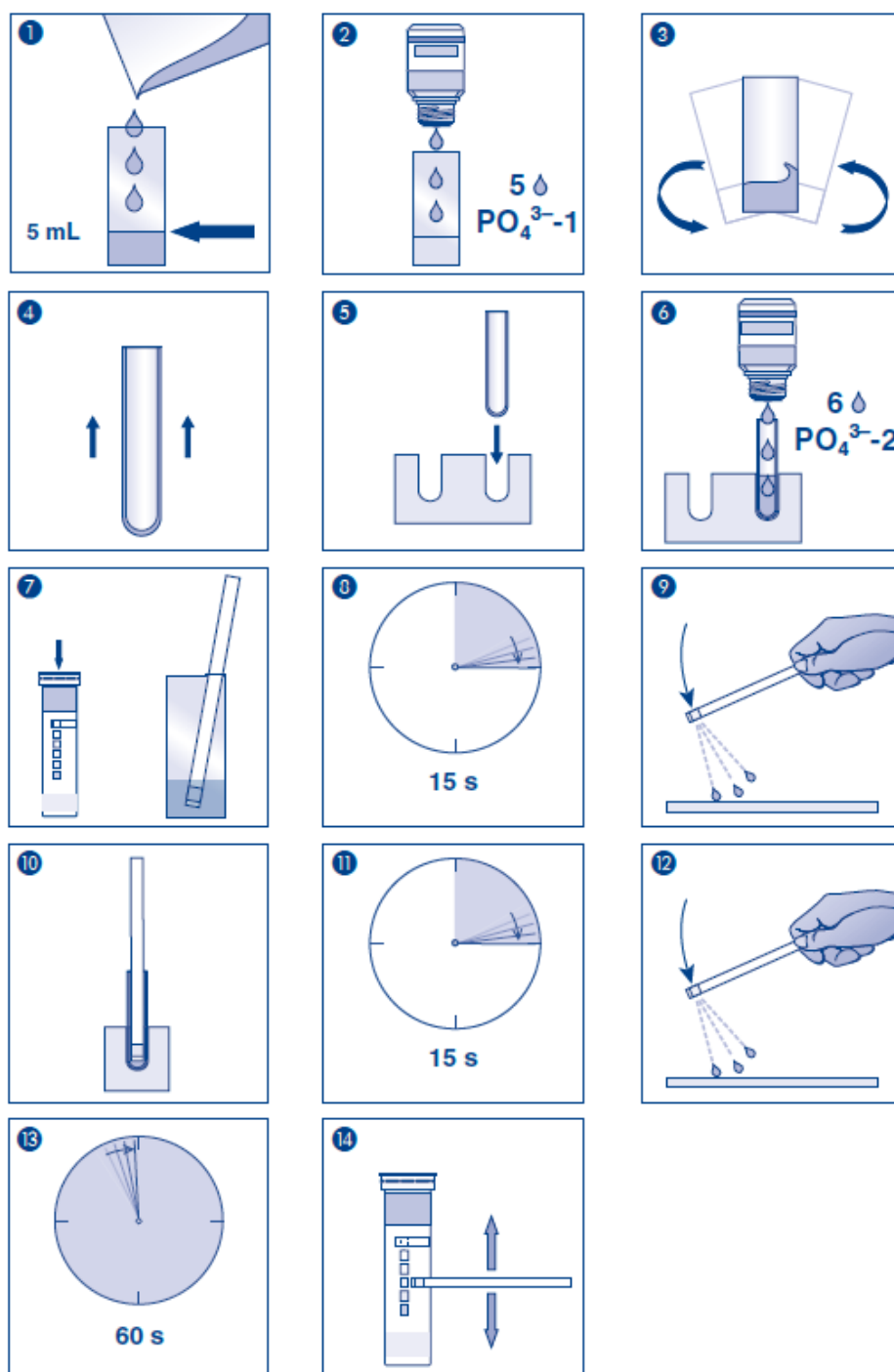
Safety precautions

PO-1 Contains nitric acid 13-20% CAS 7697-37-2. DANGER Causes severe skin burns and eye damage. Do not breathe dust/vapors. Wear protective gloves/eye protection. IF ON SKIN (or hair): Take off immediately all contaminated clothing. Rinse skin with water [or shower]. IF IN EYES: Rinse cautiously with water for several minutes. Remove contact lenses, if present and easy to do. Continue rinsing. Immediately call a POISON CENTER/doctor.

General indications

Remove only as many test strips as are required. Close the container immediately after removing a strip. Do not touch the test field.

Instructions for use



1. Rinse the measuring vessel with the test solution and fill it to the 5 mL mark.
2. Add 5 drops $\text{PO}_4^{3-}-1$ (nitric acid) to the sample.
3. Shake carefully.
4. Place the measuring vessel on the benchtop and remove the test tube from the package
5. Place the test tube into the cavity of the thermoformed mould.
6. Add 6 drops $\text{PO}_4^{3-}-2$ to the test tube.
7. Insert the test strip into the sample.
8. Wait 15 seconds.
9. Shake off excess liquid.
10. Place test strip into the filled test tube.
11. Wait 15 seconds.

12. Shake off excess liquid.
13. Wait 60 seconds.
14. Compare with the color scale.

If phosphate ions are present, the test field turns blue-green.

Interferences

This test only detects ortho-phosphate. Other phosphates, such as poly-, pyroand metaphosphates have to be broken down from the total phosphate by digestion. Silicic acid (SiO_2) contents above 10 mg/L reacts in the same way giving a blue colouration thus simulating a higher phosphate concentration. Larger concentrations of sulfide ions (S^{2-}) cause a brown color of the test field, and smaller concentrations lead to low test results. The following ions didn't interfere the determination: $< 1000 \text{ mg/L Ag}^+$, A^- , Cd , Co^{2+} , Cr^{3+} , Mg^{2+} , Mn , NH_4^+ , Ni , Zn^{2+} , C , F^- , NO_3^- , SO_4^{2-} , citrate, oxalate, tartrate, $< 500 \text{ mg/L Ca}^{2+}$, $< 250 \text{ mg/L Pb}^{2+}$, $< 50 \text{ mg/L Cu}$, $< 25 \text{ mg/L Fe}^{2+}$, $< 5 \text{ mg/L Fe}^{3+}$, $< 2 \text{ mg/L NO}_2^-$. Conversion factors: $1,0 \text{ mg PO}_4^{3-} = 0,75 \text{ mg PO}_4^{2-} = 0,33 \text{ mg P}$.

Disposal:

The used analysis specimens can be flushed down the drain with tap water and channeled off to the local sewage treatment works. Used test strips can be disposed in household waste.

Storage

Avoid exposing the strips to sunlight and moisture. Keep container cool and dry (storage temperature 4-30 °C). If correctly stored, the test strips may be used until the use-by-date printed on the packaging.

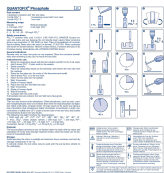
WARNING

- ITEM NUMBER
- BATCH IDENTIFICATION
- WARNING
- PERMITTED STORAGE TEMPERATURE RANGE
- Store in a dry place
- Please read instructions for use
- keep Container closed.
- Contains sufficient for $<n>$ tests

MACHERY-NAGEL GmbH & Co. KG

- Neumann-Neander-Str. 6–8
- 52355 Düren
- Niemcy
- Tel.: +49 24 21 969-0
- info@mn-net.com
- www.mn-net.com

Documents / Resources



[QUANTOFIX Phosphate Test Strips](#) [pdf] User Guide Phosphate Test Strips, Phosphate, Test Strips

References

- [MACHERY-NAGEL Webshop](#) | [MACHERY-NAGEL](#)

Manuals+,