



# Quantek 44G-GSM-INTERCOM G GSM Intercom Unit Access Control System Instruction Manual

[Home](#) » [QUANTEK](#) » Quantek 44G-GSM-INTERCOM G GSM Intercom Unit Access Control System Instruction Manual 



## 44G-GSM-INTERCOM G GSM Intercom Unit Access Control System Instruction Manual

### Contents

- [1 INTRODUCTION](#)
- [2 FUNCTIONS](#)
- [3 FEATURES](#)
- [4 OPERATION](#)
- [5 Setting with MS WINDOWS Application](#)
- [6 Setting with SMS commands](#)
- [7 INSTALLATION](#)
- [8 TECHNICAL SPECIFICATION](#)
- [9 Documents / Resources](#)
- [10 Related Posts](#)

## INTRODUCTION

The Quantek 4G-GSM-INTERCOM is an intercom unit which call the property owner's mobile or landline phone. By pressing the call button on the intercom, it makes the voice connection in a few seconds, just like when talking via a conventional intercom system. This way it makes possible for the owner to receive the visitor's calls and talk to them at anytime and anywhere, even when not at home.

## FUNCTIONS

- Wireless intercom with 1 pushbutton
- 2 phone numbers can be assigned (set as primary and secondary)
- Gate control function by free call, 100 user phone numbers can be configured
- The lock output or relay output can be controlled using the phone's keys during a conversation
- SMS forwarding (e.g. to forward the balance information of pre-pay SIM card)
- Simple configuration via USB using the PC software found in the intercom
- Remote configuring by SMS message



## FEATURES

- 2-way speech communication
- Operating on any mobile networks: 2G/3G/4G
- Remote controllable relay output for gate opening
- USB port for PC configuration
- Wide operating temperature: -30°C / +60°C
- Wide power voltage range: 9-24 VDC
- Protection: IP44

## APPLICATION AREA

- Modern solution for wireless intercom system (private homes, resorts, offices, premises)
- Remotely controllable access control unit
- Keyless door opening
- Gate opening/closing by phone
- Emergency call unit

## ADVANTAGES

- No missed clients or visitors, since the intercom unit calls the owner's mobile phone, no matter where the owner is
- On call, the owner can let in the guest, client or courier remotely
- In case of absence, burglary attempts can be prevented by imitating the apparent presence.
- Fast and easy installation, easy configuration using a PC
- Possibility for communication from any fixed place



## OPERATION

### Visitor mode

When the visitor pushes the call button, the device initiates a voice call to the configured phone number. If the called party accepts the call, the communication establishes for the configured duration. During the call, the connection cannot be interrupted by making a call to the device, nor by pressing the button again. The call is ended automatically when the configured communication time expires, or the called party can hang up the call at anytime on his/her phone. The call is ended automatically if the called party does not answer or is not available. A new call is initiated only if the button is pressed again.

### Listen-in mode

The intercom unit can be called from the telephone numbers assigned to the telephone's push buttons. If the call is initiated from any other telephone number, the intercom rejects it. In this case the unit accepts the call without ringing and the voice connection establishes. The call can be ended on the caller's phone or by pressing the call button on the unit.

**If the call is initiated from a phone number which is configured in the unit as gate opener number, the device will consider the call as a gate opening call. In this case voice connection is not established, but the relay output is activated.**

### Controlling the relay output

The RELAY (normally open, NO) relay output can be controlled as follows, depending on the usage:

- **controlling by free call:**  
on incoming call, after identifying the caller ID, the unit rejects the call and activates the output e.g. garage door or barrier opening, for which max 100 user phone numbers can be configured
- **controlling by the pushbutton:**  
the relay activates when the call button is pushed e.g. possibility to connect an existing door bell
- **controlling by the phone's keys:**  
while in call by pressing **2#** of the phone's numbered keys the relay activates for the configured time period

## ATTENTION:

The RELAY and OUT outputs is activated in parallel and independently from each other by both menu items, the Control of outputs and the Gate control. Please take this into consideration when planning the usage!

#### Controlling the voltage output

The OUT voltage output can be used for the direct control of an electric strike as follows:

- **controlling by the pushbutton:**

the output activates by pressing the pushbutton

- **controlling by the phone's keys:**

while in call by pressing 1# of the phone's numbered keys the output activates for the configured time period

The output voltage is almost equal with the supply voltage, which provides easy usability with 12VDC or 24VDC systems. The output is protected against short circuit and overcurrent, thereby the output turns off upon overcurrent and becomes operable again after the termination of the fault.

#### Forwarding incoming SMS messages

The unit forwards the SMS messages received on its SIM card (e.g. balance information in case of a prepaid card) to the configured phone number. After forwarding, the received message is deleted from the SIM card. If there is no phone number configured, the unit deletes the incoming messages without forwarding.

#### Status LED indications

LED	Color	
NET OK	green	Is lit after connecting to the mobile network and reaching the sufficient signal strength. The sufficient signal is: 10 (on 0-31 scale)
ERROR	red	Is lit continuously if the device cannot connect to the mobile network. Possible reasons: <ul style="list-style-type: none"><li>– the antenna is faulty or is not connected</li><li>– the SIM card is not inserted,</li><li>– or the PIN code request is not disabled,</li><li>– or the SIM card is faulty.</li></ul>
CALL	green	Communication in progress. A call or conversation is in progress.
OUT	red	Voltage output activated
RELAY	red	Relay output activated

#### Setting with MS WINDOWS Application

The intercom unit parameters (phone numbers, controls) can be configured using the Intercom Configurator software found on the internal storage of the device. You can run the program directly from the unit's drive after connecting to USB (Windows XP, 7, 8, 10 compatible). Connect the USB port of the GSM Intercom to the PC using the supplied cable and run the Intercom Configurator software!

**Important note:** in most cases the power of the USB connector is only sufficient to make the settings; therefore, it is necessary to connect an external power for the tests of calls!

**Click 'Read' upon opening the software, make any changes necessary, then click 'Write'. Wait 15 seconds then click 'Read' again to check your changes have been made successfully.**

Intercom Configurator 2.00

Settings

Read  
Write  
Save  
Open  
Firmware

English

**Upper button**  
 Primary phone number: 06301234567  
 Secondary phone number: 06207654321 ☐ Automatic ?

**Lower button**  
 Primary phone number:   
 Secondary phone number:  ☐ Automatic ?

**Control of outputs**  
☒ OUT Phone NO ?  
☒ RELAY Phone NO ?

**General settings**  
 Ring time (sec): 30 ?  
 Call time (sec): 20 ?  
 OUT activation time (sec): 5 ?  
 RELAY activation time (sec): 5 ?  
 Incoming SMS forwarding:  ?  
 Mic sensitivity: 11 ?  
 Speaker volume: 30 ?  
 Backlight: 5 ?

**Gate controlling**  
 Recorded users  
 Phone numbers: 06301234567 1/100 ☒ RELAY ☐ OUT Delete  
 New user  
 Phone number:  ☒ RELAY ☐ OUT Add new

**Status information**  
 Intercom  
 Module type: UP200-VoLTE  
 Firmware version: V4.00  
 GSM network  
 GSM signal (0-31): 20  
 GSM provider:  
 Inputs  
 Upper button: IDLE  
 Lower button: IDLE  
 INPUT: IDLE  
 Outputs  
 RELAY: IDLE  
 OUT: IDLE


**State messages**  
 Try to call...  
 Start call[primry]: 0614242242  
 Call accepted(20 sec).  
 Reset to primary nr[1]  
 Outgoing call started...  
 Call Stop(2).  
 Call finished.  
 Call Stop in ring state.  
 Config save OK.

## Administration operations

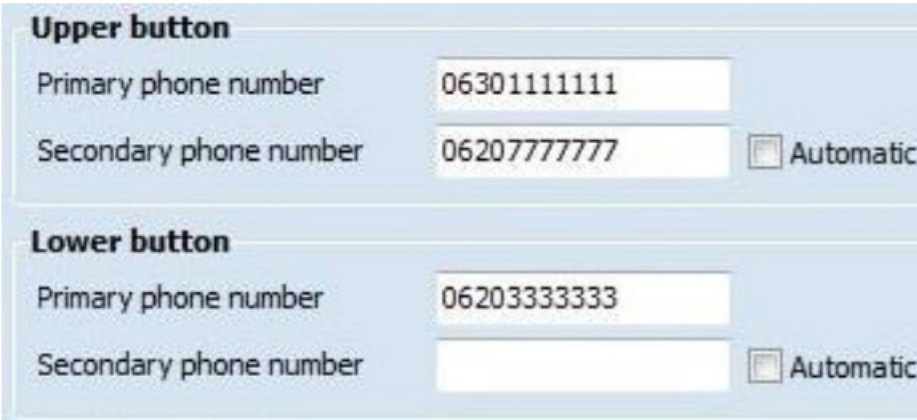
These menu items serve for reading, writing, saving etc. the settings. Using the functions displayed in the below picture it is possible to read and write the unit's memory and the settings, as well as save settings to PC or open and edit a file with the existing settings.

The procedure to be followed in all cases:

1. By connecting to the PC via USB and clicking on „Read” button, the software reads and displays the intercom's settings.
2. After editing the settings and clicking on Write the unit uploads the date to the intercom and starts operating.
3. It is also possible to save data to the PC.

	<p><b>Read</b> Click to read and displays the settings from the unit.</p> <p><b>Write</b> Click to write the settings to the unit's memory.</p> <p><b>Save</b> Click to save the settings to file.</p> <p><b>Open</b> Click to open saved settings from file.</p> <p><b>Firmware</b> Click to update the intercom's firmware.</p> <p><b>Language</b> of Intercom Configurator</p>
---	---

## Buttons



**Upper button**

Primary phone number: 06301111111

Secondary phone number: 06207777777 ☐ Automatic

**Lower button**

Primary phone number: 06203333333

Secondary phone number:  ☐ Automatic

The intercom unit calls the phone numbers entered here when the appropriate button is pressed. If both phone numbers are set to any button, the unit calls the primary phone number first, and if the call is successful, it ignores the secondary telephone number. In case of an unsuccessful call (e.g. if the called number is not available or the call is not accepted), calling the secondary phone number can be done by pushing the button again (within 60 seconds). If the Automatic option is enabled, then the unit calls the secondary phone number if the primary fails without having to push the button again.

**Note:** Only Upper button applies to this intercom

### Control of outputs

The two outputs of the unit can be controlled by multiple configured events. You can choose the activation event according to the usage.



**Control of outputs**

☒ OUT   

☒ RELAY   

### OUT

The voltage output, e.g. for direct control of an electric lock.

### RELAY

The relay contact output, e.g. for garage door control.

Setting:

1. To enable control, it is necessary to tick the chosen output or outputs.
2. At the next step you need to select the starting event which will activate the output, this will normally be Phone.
3. Default control needs to be set, where
4. NO= OFF, NC= ON by default.

In case of OUT NO= 0V, NC= power.

In case of RELAY NO= break, NC= short-circuit

At control the output changes state for the given time period.

### General settings

General settings	
Ring time (sec):	30
Call time (sec):	60
OUT activation time (sec):	5
RELAY activation time (sec):	5
Incoming SMS forwarding:	06301111111
Mic sensitivity:	12
Speaker volume:	25
Backlight:	5

#### Ring time (10-120 sec)

The maximum time allowed for ringing from pushing the call button. This function is useful to avoid switching to voicemail.

#### Call time (10-600 sec)

The maximum time allowed for a call initiated from the intercom.

#### OUT active time (1-120 sec, monostable)

The voltage output activation time.

#### RELAY active time (1-120 sec, monostable)

The relay contact output activation time.

#### SMS forward

Forwards the SMS messages received on the unit's SIM card to the specified phone number, e.g. balance information received from the GSM service provider. It is recommended to configure this in case of using a pre-pay type SIM card.

**Microphone sensitivity** (5-14), default value: 13 the change in settings become valid in next call progress

**Volume** (10-50), default value: 25 the change in settings become valid in next call progress

**Attention:** By increasing the default values of the microphone and speaker settings, echo effect may occur and increase!

If the value of volume is increased it is necessary to decrease the value of the microphone sensitivity to stop



echoing. The same way, if the value of microphone sensitivity is increased the decrease of value can be the solution to suppress echoing.

#### **Backlight brightness**

light (0-10), default value: 5

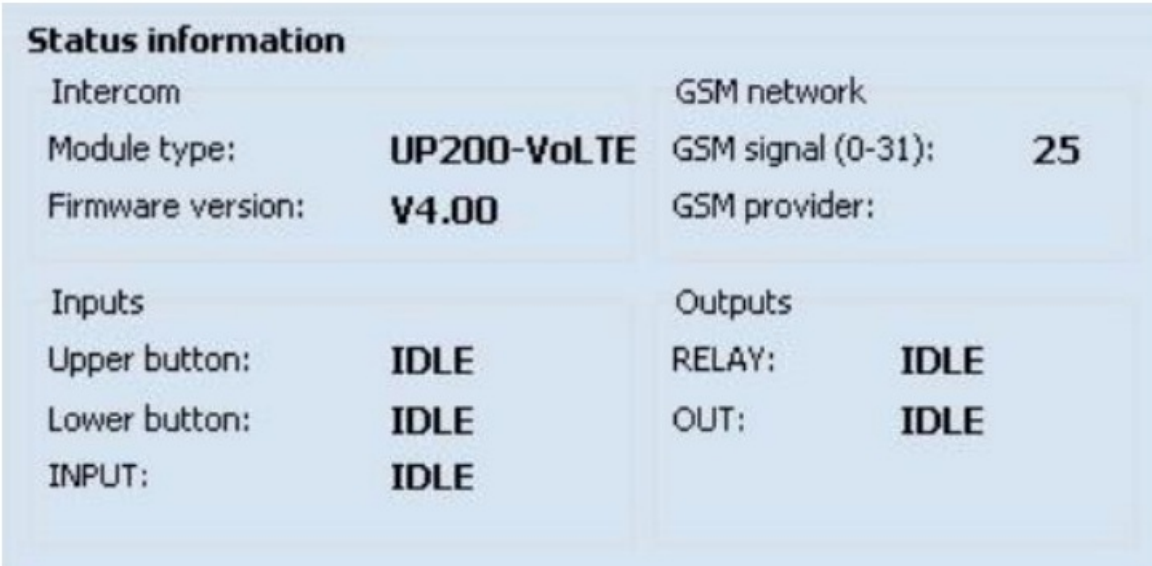
#### **Gate control**



The 'Gate controlling' interface is a light blue panel with a title bar. It contains two main sections. The first section, 'Recorded users', features a 'Phone numbers' label, a dropdown menu showing '06301111111', a '9/100' indicator, and two checkboxes: 'RELAY' (checked) and 'OUT' (unchecked). The second section, 'New user', has a 'Phone number' label, an empty text input field, and two checkboxes: 'RELAY' and 'OUT' (both unchecked).

When calling the intercom from the phone numbers specified here, control of the output or outputs assigned to the given phone number is performed. The incoming call is not accepted from the configured telephone number, so this function operates with a free call. Maximum 100 user phone numbers can be added.

#### **Status information**



The 'Status information' interface is a light blue panel with a title bar. It displays system status in two columns. The left column, 'Intercom', shows 'Module type: UP200-VoLTE' and 'Firmware version: V4.00'. The right column, 'GSM network', shows 'GSM signal (0-31): 25' and 'GSM provider:'. Below these are two sections: 'Inputs' on the left and 'Outputs' on the right. 'Inputs' shows 'Upper button: IDLE', 'Lower button: IDLE', and 'INPUT: IDLE'. 'Outputs' shows 'RELAY: IDLE' and 'OUT: IDLE'.

Displays information about the switching state of the peripherals and the actual status of the mobile network.

#### **Intercom information**

Displays the module type and the firmware version.

#### **GSM network**

Displays the GSM provider and the value of the GSM signal (0-31)

The appropriate GSM signal is minimum 12

#### **Outputs**

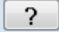
Displays the state of the relay and voltage output control.

#### **State messages**





The messages shown in this window give information about the internal operation of the unit. This helps in identifying an internal process, an incorrect configuration or other malfunction.

The question marks  placed next to the settings in the Intercom Configurator give assistance to the parameter settings of the given section.

### Setting with SMS commands

Configuration of the unit is possible by sending the appropriate commands in SMS to the module's phone number. It is possible to send more commands (settings) in the same SMS, but the length of the message must not exceed 140 characters! Each message must begin with the password using the PWD=password# command and each command must end with # character, else the module does not apply the modifications. The following table contains the configuring and query commands:

Configuration commands	
<b>PWD=1234#</b>	Password for programming, default setting:1234
<b>PWC=new password#</b>	Changing the password. The password is a 4-digit number.
<b>RESET#</b>	Resetting the settings and the password to default.
<b>UPTTEL1=phone number #</b>	Primary phone number for upper pushbutton.
<b>UPTTEL2=phone number #</b>	Secondary phone number for upper pushbutton.
<b>UPAUTO=ON# or OFF#</b>	In case the call to UPTTEL1 fails, UPTTEL2 phone number will be called without having to push the button again, if the parameter is ON.
<b>LOWTEL1=phone number#</b>	Primary phone number for lower pushbutton. <b>N/A</b>
<b>LOWTEL2=phone number#</b>	Secondary phone number for lower pushbutton. <b>N/A</b>
<b>LOWAUTO=ON# or OFF#</b>	In case the call to LOWTEL1 fails, LOWTEL2 phone number will be called without having to push the button again, if the parameter is ON. <b>N/A</b>
<b>OUT=activation event#</b>	Voltage output control: <b>OFF</b> : disable, <b>BUTTON</b> : when button is pressed, <b>PHONE</b> : during call
<b>RELAY=activation event #</b>	Relay control: <b>OFF</b> : disable, <b>BUTTON</b> : when button is pressed, <b>PHONE</b> : during call
<b>RINGTIME=duration#</b>	Ringing time of the telephone to restrict the reach of voice mail. (10-120sec)
<b>CALLTIME=duration#</b>	Maximum duration of the conversation. (10-600 sec)
<b>RTIME=duration*NO# or NC</b>	Duration and idle mode of the relay output activation. (1-120 sec) NO=off, NC=on
<b>OUTTIME=duration*NO# or NC</b>	Duration and idle mode of the voltage output activation. (1-120 sec) NO=off, NC=on
<b>RTEL=phone number*RTEL*OUT#</b>	Setting the phone numbers for relay or voltage output activation. For output activation the suffix after the phone number is necessary. *REL: switch the relay, *OUT: switch the voltage out, *REL*OUT switch both. Up to 100 users.
<b>RTEDEL=phone number#</b>	Delete the selected phone number from the RTEL list.
<b>STATUS?#</b>	Query of the settings, except for the RTEL list.
<b>INFOSMS=phone number#</b>	Forwards the balance information of the GSM provider to the given telephone number.

This scenario shows the setup for the following requirements: adding 2 phone number only to upper pushbutton, auto switch to the secondary phone, VOUT control (for electric lock) by phone and input contact, duration is 10sec, both phone numbers are able to control the gate control's relay by a free call, relay activation time is 5sec. Other call parameters: Ringing time=25sec; maximum duration of the conversation=120sec; forwarding prepaid card information to primary phone number

#### SMS message:

PWD=1234#UPTTEL1=0036309999999#UPTTEL2=003620111111#UPAUTO=ON#OUT=PHONE#

OUTTIME=10\*NO#RTEL=0036309999999\*REL#RTEL=003620111111\*REL#RTIME=5\*NO#  
RINGTIME=25#CALLTIME=120#INFOSMS=0036201111111#

## INSTALLATION

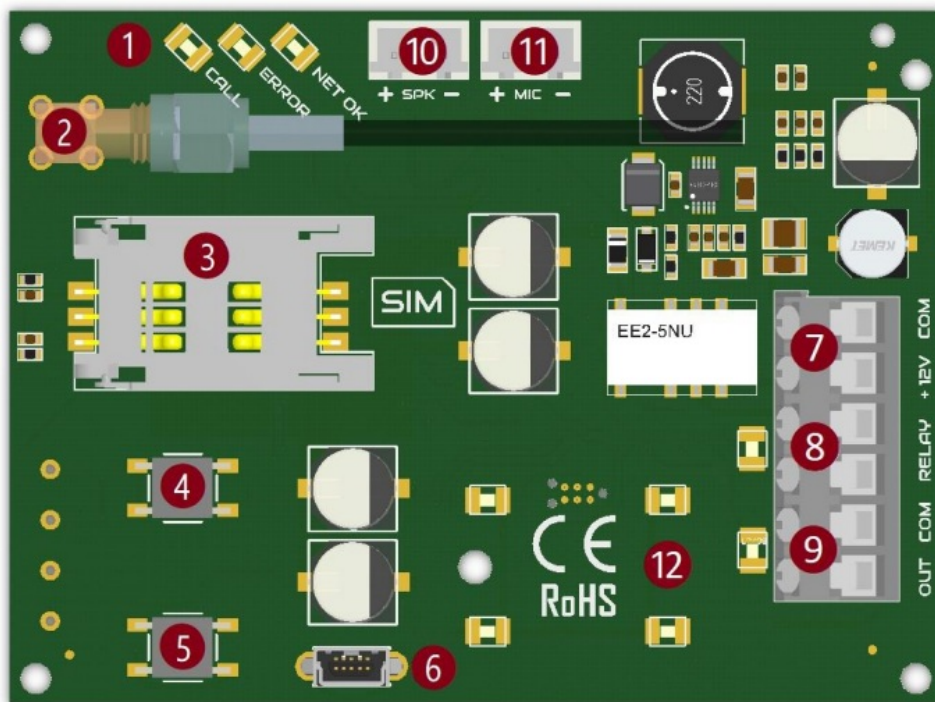
### Preparation

- Disable PIN code request on the SIM card, for which a mobile telephone is necessary.
- Make sure the SIM card is inserted properly into its case.
- Insert the SIM card into the slot so that its contact surface should point towards the contact pins of the card case when turned down, as well as the cut corner of the card should fit into the plastic case.
- Make sure the antenna is fixed properly into the SMA connector.
- Make sure the wires are connected as shown in the connection diagram.
- Make sure the power supply is sufficient for the operation of the unit! If it is, and all connections are done, the unit can be powered up.

**When operated with an electric lock, the minimum power requirement is 15VA!**

### Mounting

- Do not mount the unit where it could be affected by strong electromagnetic disturbances.
- **Antenna:** the external antenna supplied with the unit provides good transmission under normal reception circumstances. In case of having signal strength problems and/or noisy communication, use other type of higher gain antenna or find a more suitable place for the antenna.



1. Status LEDs
2. External antenna connector
3. SIM card holder
4. Upper call pushbutton

5. Lower call pushbutton
6. USB port
7. Power supply input
8. Relay contact output
9. Speaker output
10. Microphone input
11. Name plate back lighting

## TECHNICAL SPECIFICATION

Name	Other conditions	Minimum	Typical	Maximum	Unit
Power supply (+12V)		9	12	24	VDC
Current consumption	in case of 12VDC	30	40	400	mA
Relay output load				30	V
				2	A
Voltage output	in case of 12VDC		11		V
				1	A
Operating temperature		-30		+60	°C
Outdoor protection				IP44	

### Other data

**Network operation:** VoLTE / UMTS / GSM

### Dimensions

**height:** 165mm

**width:** 122mm

**depth:** 40mm

### Package contents

- Quantek 4G-GSM-INTERCOM intercom unit
- 4G antenna
- USB A / B5 mini cable
- Antenna bracket + fixing screws



## Documents / Resources

<div data-bbox="134 103 284 302"><p><b>4G-GSM-INTERCOM</b></p><p><b>DESCRIPTIONS</b></p><p>1. 4G-GSM-INTERCOM is a 4G-GSM Intercom Unit Access Control System, 44G-GSM-INTERCOM, G GSM Intercom Unit Access Control System, Intercom Unit Access Control System, Access Control System, Control System</p><p><b>FEATURES</b></p><p>1. 4G-GSM-INTERCOM is a 4G-GSM Intercom Unit Access Control System, 44G-GSM-INTERCOM, G GSM Intercom Unit Access Control System, Intercom Unit Access Control System, Access Control System, Control System</p><p><b>APPLICATIONS</b></p><p>1. 4G-GSM-INTERCOM is a 4G-GSM Intercom Unit Access Control System, 44G-GSM-INTERCOM, G GSM Intercom Unit Access Control System, Intercom Unit Access Control System, Access Control System, Control System</p></div>	<p><a href="#">Quantek 44G-GSM-INTERCOM G GSM Intercom Unit Access Control System</a> [pdf] Instruction Manual</p> <p>44G-GSM-INTERCOM G GSM Intercom Unit Access Control System, 44G-GSM-INTERCOM, G GSM Intercom Unit Access Control System, Intercom Unit Access Control System, Access Control System, Control System</p>
--	---