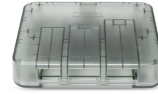


QSFPTEK

QSFPTEK SFP28 Series
Coding Box



QSFPTEK SFP28 Series Coding Box User Guide

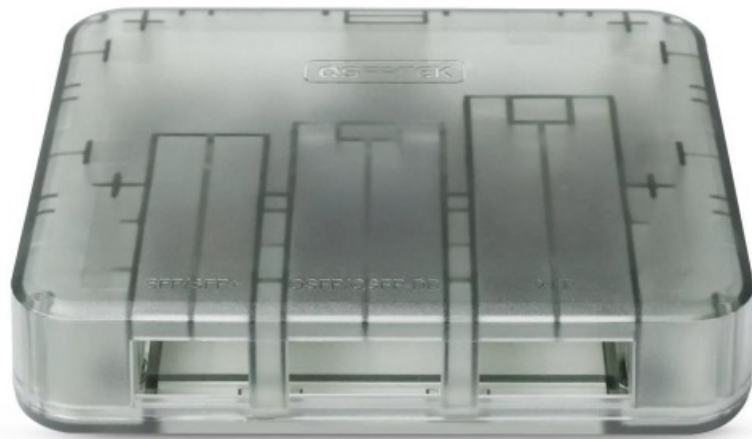
[Home](#) » [QSFPTEK](#) » QSFPTEK SFP28 Series Coding Box User Guide 

Contents

- [1 QSFPTEK SFP28 Series Coding Box](#)
- [2 Product Information](#)
- [3 Product Usage Instructions](#)
- [4 Introduction](#)
- [5 Supported Transceiver Type](#)
- [6 QSFPTEK Coding Box Operation Guide](#)
- [7 Support and Other Resources](#)
- [8 Product Warranty](#)
- [9 Documents / Resources](#)
 - [9.1 References](#)
- [10 Related Posts](#)

QSFPTEK

QSFPTEK SFP28 Series Coding Box



Product Information

Specifications

- Support Form Factor: SFP, SFP+, XFP, SFP28, QSFP+, QSFP28, QSFP-DD
- Website: www.qsfptek.com
- Version: V2.0
- Warranty: 3-year limited warranty

Product Usage Instructions

Tools Preparation

Make sure you have the following tools ready:

- QSFPTEK Coding Box
- Computer
- USB cable

Operation Guide

Driver Installation:

Connect the computer and Coding Box with the USB cable. The green light indicates successful connection. Open the 'USB Driver' folder and run 'USBXpressInstaller' as an administrator. After successful installation, restart your computer.

Transceiver Coding

Open the 'Coding folder' and launch the 'CodingX' software.

Insert the module into the Box. The red light indicates a successful connection between the module and the Code Box.

CodingX will display the module log on the left side upon successful connection.

1. **Config Button Introduction:** Module type: The system automatically recognizes speeds from 1G to 100G.

- Data range: Choose the appropriate 'A0+A2' code position information.

- Select Pwd: Choose the password corresponding to the module model.
- Open code: Click 'Open code' to select the code source.
- Write: Click 'Write' to finish transceiver coding. A 'Success' or 'Fail' message will be displayed accordingly.

Support and Other Resources

- Contact us:
 - Email: support@qsfptek.com
 - Customer Success Stories: Customer Success Stories

FAQ

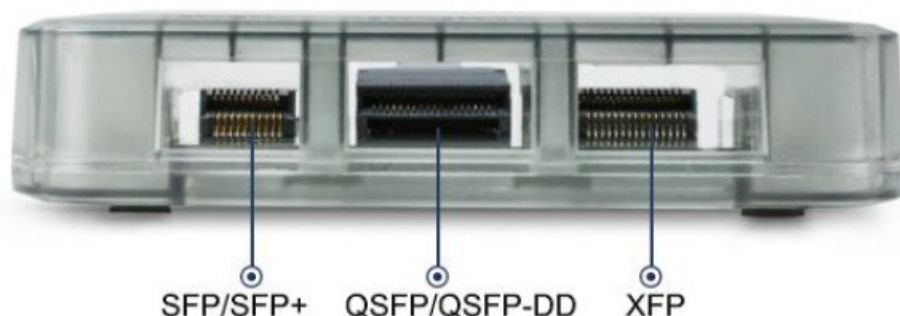
Q: What transceiver types are supported by the QSFPTEK Coding Box?

A: The QSFPTEK Coding Box supports SFP, SFP+, X FP, SFP28, QSFP+, QSFP28, and QSFP-DD transceiver modules.

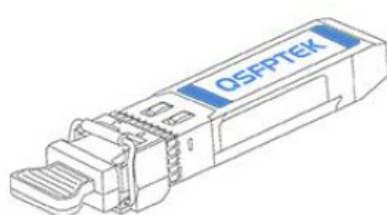
Introduction

QSFPTEK coding box can be used for coding, encoding, writing, and testing a full range of optical transceiver modules, including SFP, SFP+, SFP28, XFP, QSFP+, QSFP28, QSFP-DD, etc. This programming coding board is industry-leading in comprehensive performance with auto-sensing and auto-code writing functions.

We appreciate your decision to select QSFPTEK coding box. This manual is intended to help you to config the optical module with the QSFPTEK coding box.



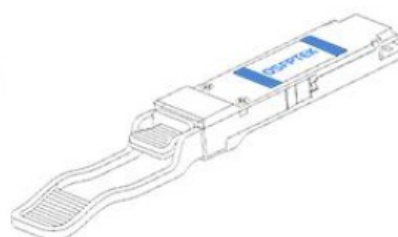
Supported Transceiver Type



SFP/SFP+/SFP28



XFP



QSFP+/QSFP28/QSFP-DD

QSFPTEK Coding Box Operation Guide

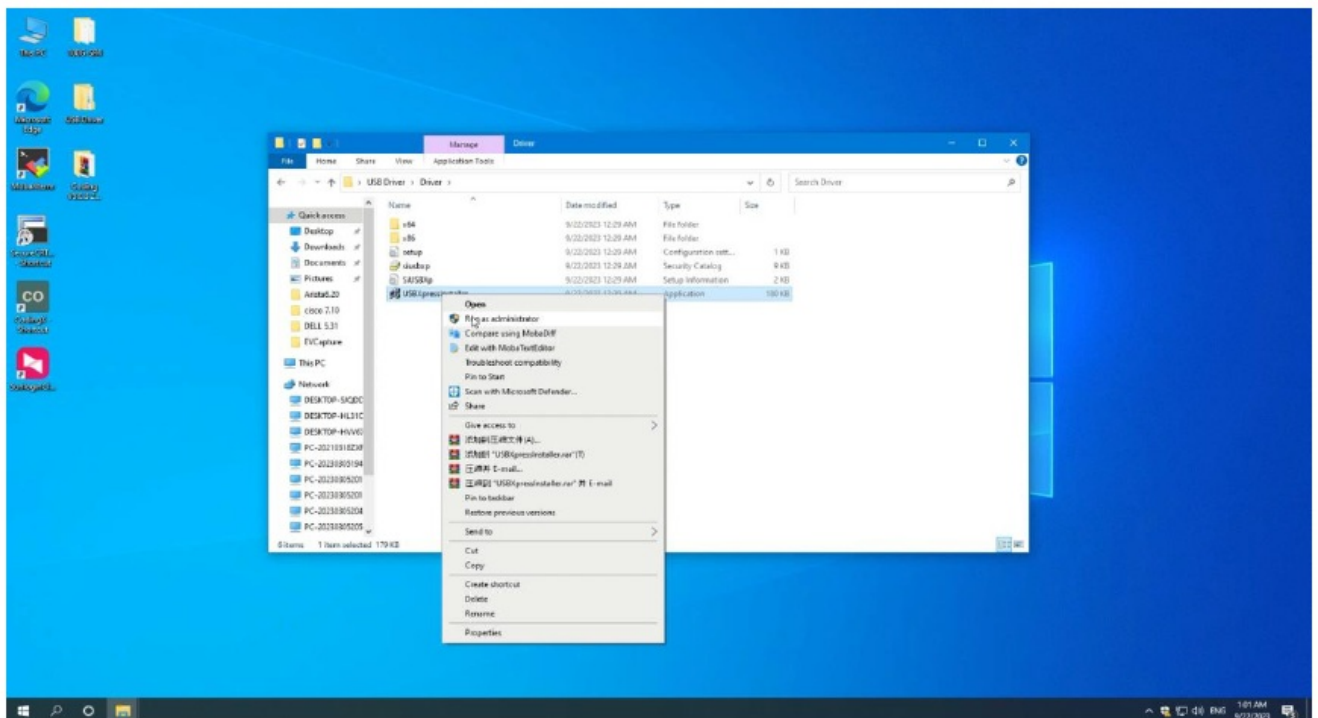
Tools Preparation



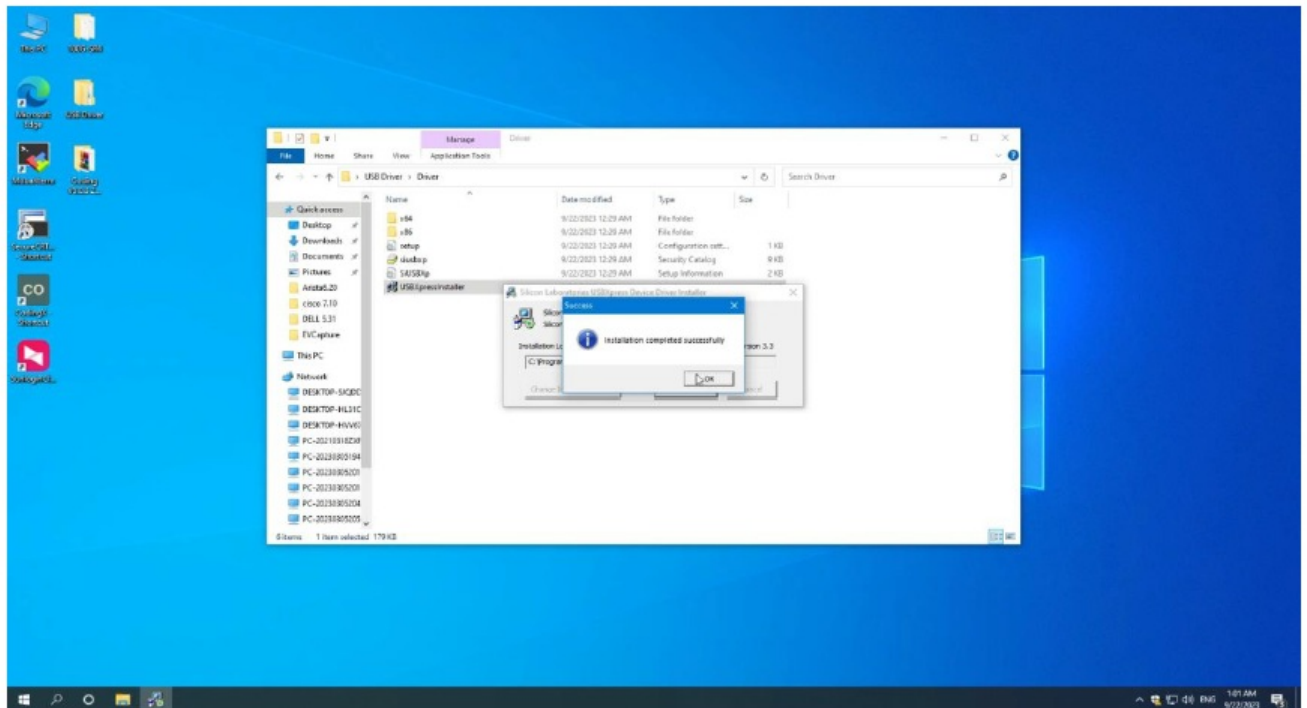
Operation Guide

Driver Installation

- Connect the computer and Code Box with USB cable (The green light indicates successful connection)
- Open the 'USB Driver' folder-USBXpressInstaller, Choose 'Run as administrator'

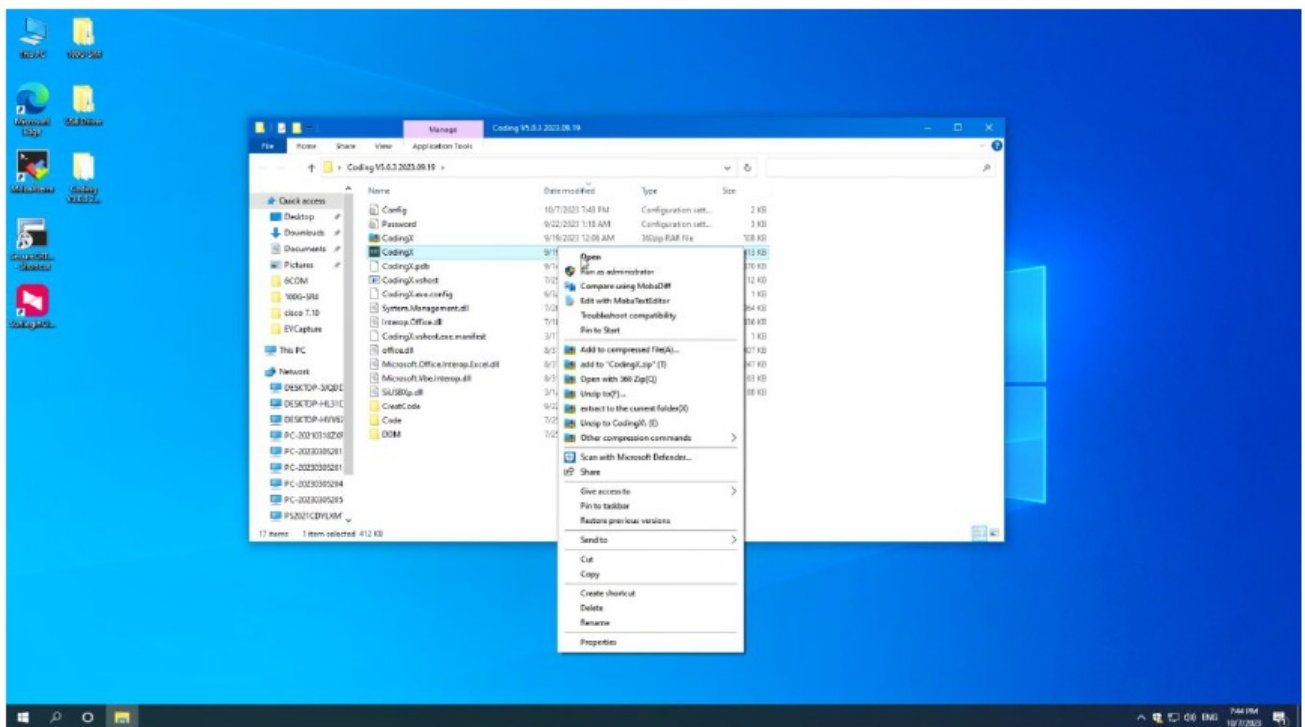


- After successful installation, please restart you computer



Transceiver Coding

- Open the 'Coding folder', Open the 'CodingX' software

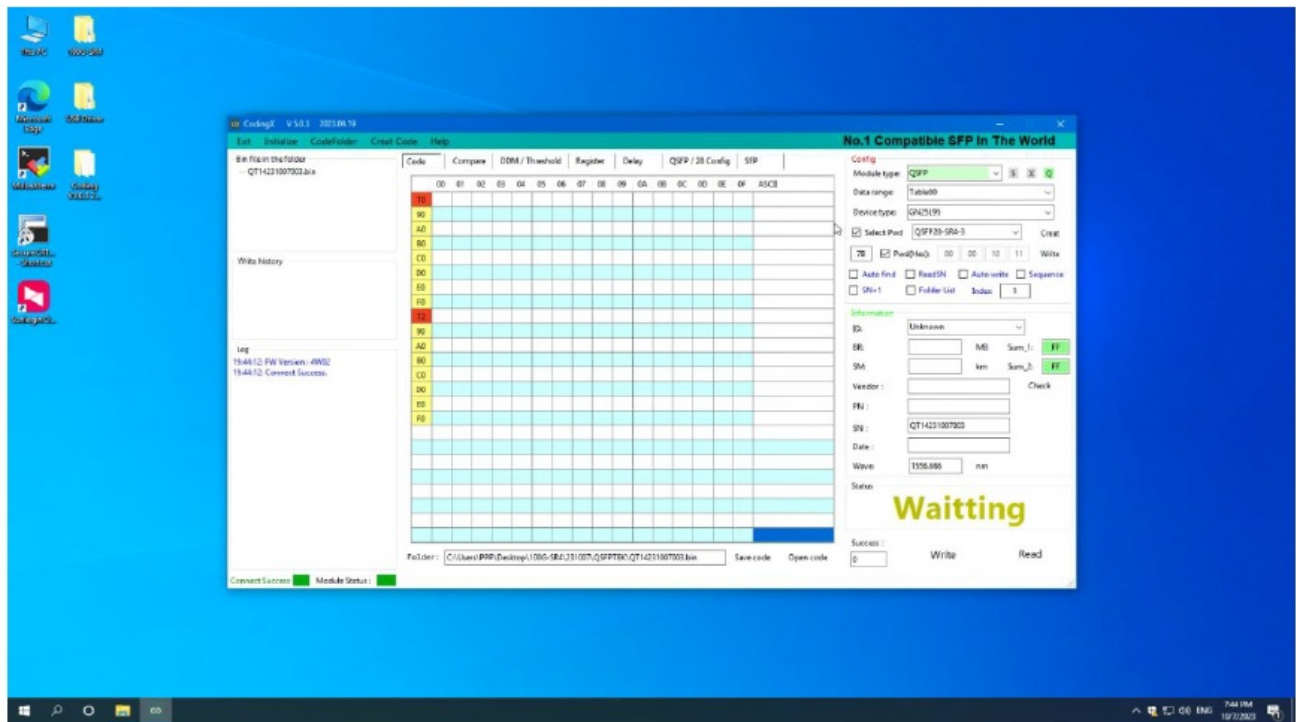


- The display interface after opening CodingX
- Insert the module into BOX (the red light indicates successful module and Code Box connection)
- After connection successful, the CodingX will display the module log in the left side

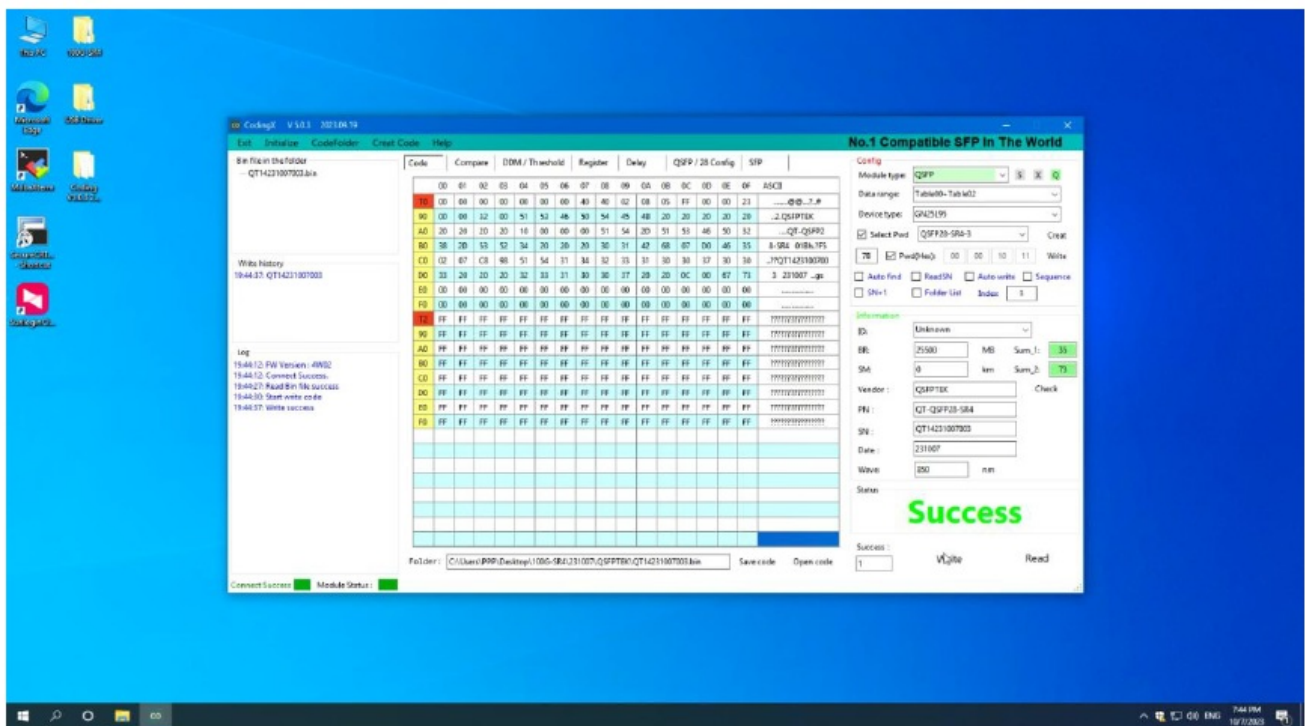
Important Config Button Introduction by Operation Order:

- Module type: The system automatically recognizes speeds from 1G to 100G
- Data range: Choose the appropriate 'A0+A2' code position information
- Select Pwd: Choose the password corresponding to the module model

- Open code: Click 'Open code' to select the code source
- Write: Click 'Write' to finish transceiver coding



- 'Success' will be displayed if writing is successful, and 'Fail' if writing is failed



Support and Other Resources

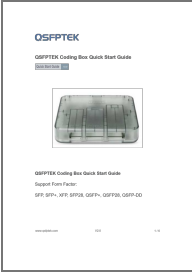
- Contact us <https://www.qsfptek.com/company/contact-us.html>
- Customer Success <https://www.qsfptek.com/resources/customer-success-stories>
- Email support@qsfptek.com

Product Warranty

The QSFTEK Box products are backed by a 3-year limited warranty supported by QSFTEK.

For more details about applying qualifications, please live chat or email sales@qsfptek.com for support.
3 Year Warranty

Documents / Resources

| | |
|---|--|
|  | QSFPTek SFP28 Series Coding Box [pdf] User Guide SFP28 Series Coding Box, SFP28 Series, Coding Box, Box |
|---|--|

References

- [🔗 QSFPTek - Compatible Optical Transceivers Factory Outlet](#)
- [User Manual](#)

Manuals+, Privacy Policy

This website is an independent publication and is neither affiliated with nor endorsed by any of the trademark owners. The "Bluetooth®" word mark and logos are registered trademarks owned by Bluetooth SIG, Inc. The "Wi-Fi®" word mark and logos are registered trademarks owned by the Wi-Fi Alliance. Any use of these marks on this website does not imply any affiliation with or endorsement.