

**QSC®**  
**LA108, LA112**  
**Active Line**  
**Array**  
**Loudspeakers**



# QSC LA108, LA112 Active Line Array Loudspeakers Owner's Manual

[Home](#) » [QSC](#) » QSC LA108, LA112 Active Line Array Loudspeakers Owner's Manual 

## Contents

- [1 QSC LA108, LA112 Active Line Array Loudspeakers](#)
- [2 FAQs](#)
- [3 PRODUCT INFORMATION](#)
- [4 Key Features](#)
- [5 Active Line Array Loudspeakers](#)
- [6 Specifications](#)
- [7 Measurements](#)
- [8 Deployment Options](#)
- [9 Dimensions](#)
- [10 Optional Accessories](#)
- [11 CONTACT INFORMATION](#)
- [12 Documents / Resources](#)
  - [12.1 References](#)
- [13 Related Posts](#)



**QSC LA108, LA112 Active Line Array Loudspeakers**



## FAQs

- **Q: What is the warranty coverage for the LA108 and LA112 loudspeakers?**
  - A: Each loudspeaker is backed by an industry-best global 6-Year Extended Warranty upon product registration.
- **Q: Can I use the LA108 and LA112 for outdoor events?**
  - A: While these loudspeakers are suitable for live venues, fixed installations, and mobile entertainers, it is recommended to protect them from exposure to harsh weather conditions if used outdoors.
- **Q: How do I daisy-chain multiple units of LA108 or LA112 together?**
  - A: Utilize the provided connectors for analog, digital audio, and AC power to link multiple units in a daisy-chain configuration for synchronized operation.

## PRODUCT INFORMATION

### Next-generation Intelligent Active Loudspeakers

L Class represents the next generation of advanced, intelligent, active loudspeakers for mobile and fixed entertainment applications.

### Key Features

- Purpose-designed, lightweight neodymium transducers deliver high, undistorted SPL (134 dB / 136 dB peak).
- Energy-efficient Class D amplifier modules (1300 W / 2400 W peak power) with Power Factor Correction and extremely low AC consumption.
- Innovative QSC LEAF™ (Length-Equalized Acoustic Flare) waveguide provides defined, uniform coverage and exceptional throw.
- Intuitive, single-operator QSC RapidDeploy™ rigging technology with short, medium, and long-throw options, guarantees fast deployment without tools or additional hardware.
- Onboard QSC AWARE™ (Automatic Wireless Array Recognition) system intelligence communicates essential setup information to the user via any loudspeaker's Rear User Interface (RUI) or QSC SysNav™ App.
- QSC SysNav™ (System Navigator) App allows the user to easily design, configure, control, monitor, and apply signal processing to individual loudspeakers, full arrays or groupings of both. The AIM (Array Installation Modeling) prediction tool lets the user visualize array coverage by positioning virtual loudspeakers and arrays in a scaled, graphical model of a venue or installation space.

- Network solution includes digital audio-over-IP (Dante®) for interoperability with other audio equipment and seamless control and monitoring integration into the Q-SYS Ecosystem via Q-SYS Inventory Extensions.
- Acoustic Linear Phase (ALP) design provides complementary coherence between QSC loudspeakers deployed in the same audio system delivering a uniform listening experience across the entire venue.
- Complemented by LS118, networked, single 18-inch active subwoofer.
- Flown (up to six units with array frame), ground-stacked (up to four LA108/three LA112 over a single LS118 subwoofer) or loudspeaker stand/pole mounting (up to three LA108/two LA112) deployment options.
- Industry-best global 6-Year Extended Warranty with product registration.

LA108 | LA112

## **Active Line Array Loudspeakers**

### **Live Venues | Fixed Installations | Mobile Entertainers AV Rental/Event Productions**

The LA108 and LA112 are next-generation, intelligent, active line array loudspeakers featuring a brilliant combination of leading-edge innovation, refined engineering and unparalleled ease of use in easy-to-deploy packages. Delivering extraordinary audio experiences and exceptional performance via system intelligence and premium components, both products were developed thoroughly and rigorously with sound quality, simplicity and expandability in mind. The remarkable result of a deep understanding of customer needs and application requirements, LA108 and LA112 loudspeakers are easy to configure and deploy for applications ranging from simple, portable, plug-and-play setups, to demanding, networked, high-tech AV productions and fixed installations. Solo entertainers, installers and production companies will value their intuitive splay angle adjustment and array optimization, as well as their flexible interoperability with networked audio systems (Dante®). Technical innovations abound, including the proprietary QSC LEAF™ (LengthEqualized Acoustic Flare) waveguide, QSC Acoustic Linear Phase (ALP) design and the ergonomically designed, single operator QSC RapidDeploy™ rigging system coupled with onboard QSC AWARE™ (Automatic Wireless Array Recognition) system intelligence. Deployed using dedicated array frames, ground-stacked (array frames combined with optional sub-stack adapters), or mounted using loudspeaker stands/poles, LA108 and LA112 loudspeakers also feature daisy-chain connections for analog, digital audio as well as for AC power (PowerCON TRUE1). Each loudspeaker is backed by an industry-best global 6-Year Extended Warranty, with product registration.

## **Specifications**

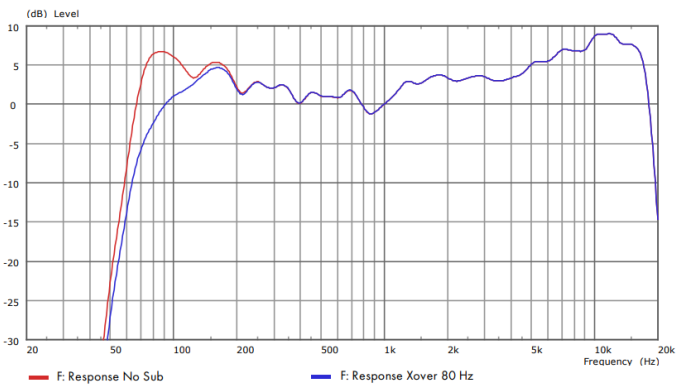
**LA108****LA112**

Configuration	Two-way active line array loudspeaker	
LF Transducer	203 mm (8-inch), cone	305 mm (12-inch), cone
HF Transducer	44 mm (1.75-inch), compression driver with Polyimide diaphragm	2x 44 mm (1.75-inch), compression drivers with Polyimide diaphragm
Frequency Response (-6 dB)	62 Hz - 20 kHz	58 Hz - 20 kHz
Frequency Range (-10 dB)	57 Hz - 20 kHz	53 Hz - 20 kHz
Nominal Coverage Angle	100° H x 15° V	90° H x 15° V
Maximum Rated SPL <sup>1</sup> (peak)	134 dB @ 1 m	136 dB @ 1 m
Amplifier (peak)	Class D LF 1000 W / HF 300 W	Class D LF 1600 W / HF 800 W
Cooling	Convection cooling	
Controls	Rotary push encoder 2 x Push button (Menu, ID)	
Display Screen	61 mm (2.4-inch) Full color display area (240 x 320 pixels)	
Indicators	Power LED Limiter active LED Standby active LED 2 x Signal LED	
Connectors	XLR Female (Analog In) XLR Male (Analog Thru) 2 x RJ45 EtherCON (Dante® and QSC SysNav™ In/Thru) 2 x PowerCON TRUE1 (AC Power Inlet/Outlet)	
AC Power Input	Universal power supply, 100-240 VAC, 50-60 Hz	
AC Power Consumption <sup>2</sup>	100 VAC, 0.8 A / 120 VAC, 0.75 A / 230 VAC, 0.5 A	100 VAC, 1.8 A / 120 VAC, 1.5 A / 230 VAC, 1 A
Enclosure Material	Impact resistant ABS	
Attachment Points	QSC RapidDeploy™ rigging system 1x M10 (on rear panel for pull-back)	
Color	Black (RAL 9011)	
Grille	18 GA Powder coated steel	16 GA Powder coated steel
Dimensions (H x W x D)	272 x 519 x 374 mm 10.7 x 20.4 x 14.7 inches	392 x 630 x 417 mm 15.4 x 24.8 x 16.4 inches
Net Weight	13.7 kg (30.1 lb)	21.4 kg (47.2 lb)
Shipping Weight	17.1 kg (37.6 lb)	26.2 kg (57.7 lb)
Supplied Accessories	1 x PowerCON TRUE1 power cable	
Regulatory	UL, CE, FCC Class B	UL, CE, FCC Class A

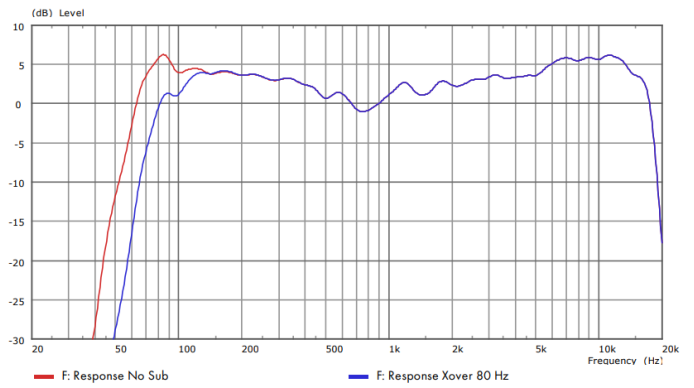
1. Measured at 1 meter, on axis, in full space, using IEC268 filtered noise.
2. 1/8 power is representative of current draw with typical music program material with occasional clipping.

Dante is a registered trademark of Audinate Pty Ltd. EtherCON and PowerCON are registered trademarks of Neutrik. Windows is a registered trademark of Microsoft. MacOS and iOS are registered trademarks of Apple. Specifications subject to change without prior notice.

## Measurements

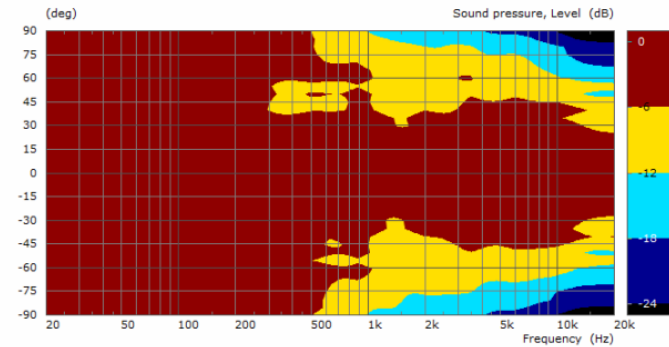


LA108 Frequency response, on-axis

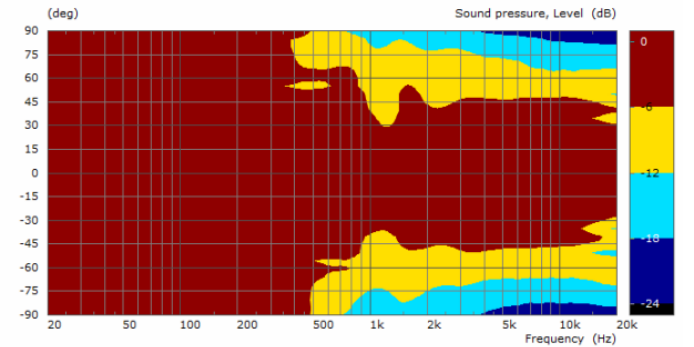


LA112 Frequency response, on-axis

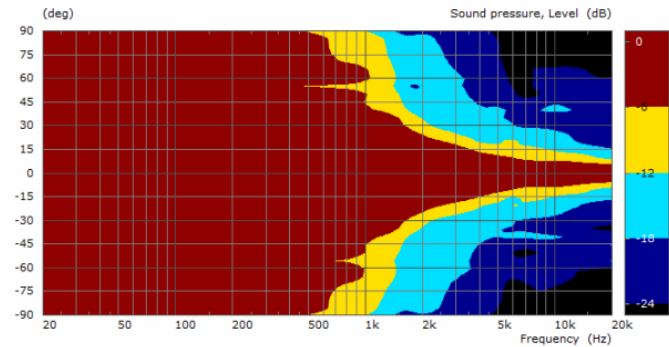
## Measurements



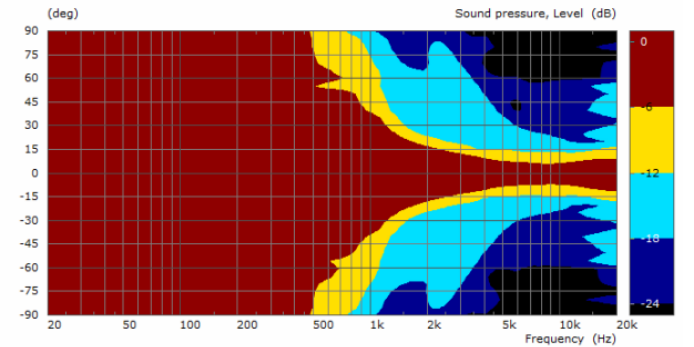
LA108 Horizontal coverage\*



LA112 Horizontal coverage\*

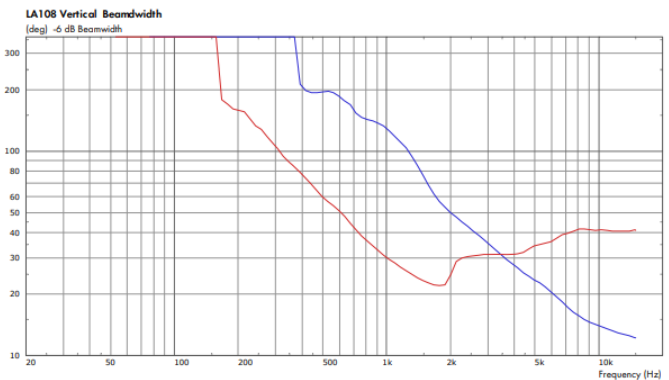


LA108 Vertical coverage\*

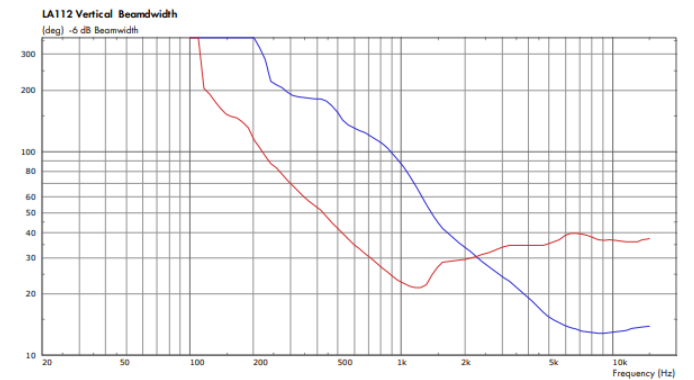


LA112 Vertical coverage\*

(\*) Single-box voicing.



LA108 Vertical beamwidth  
Single-box (blue). Three-boxes set at 12 deg splay angles (red).

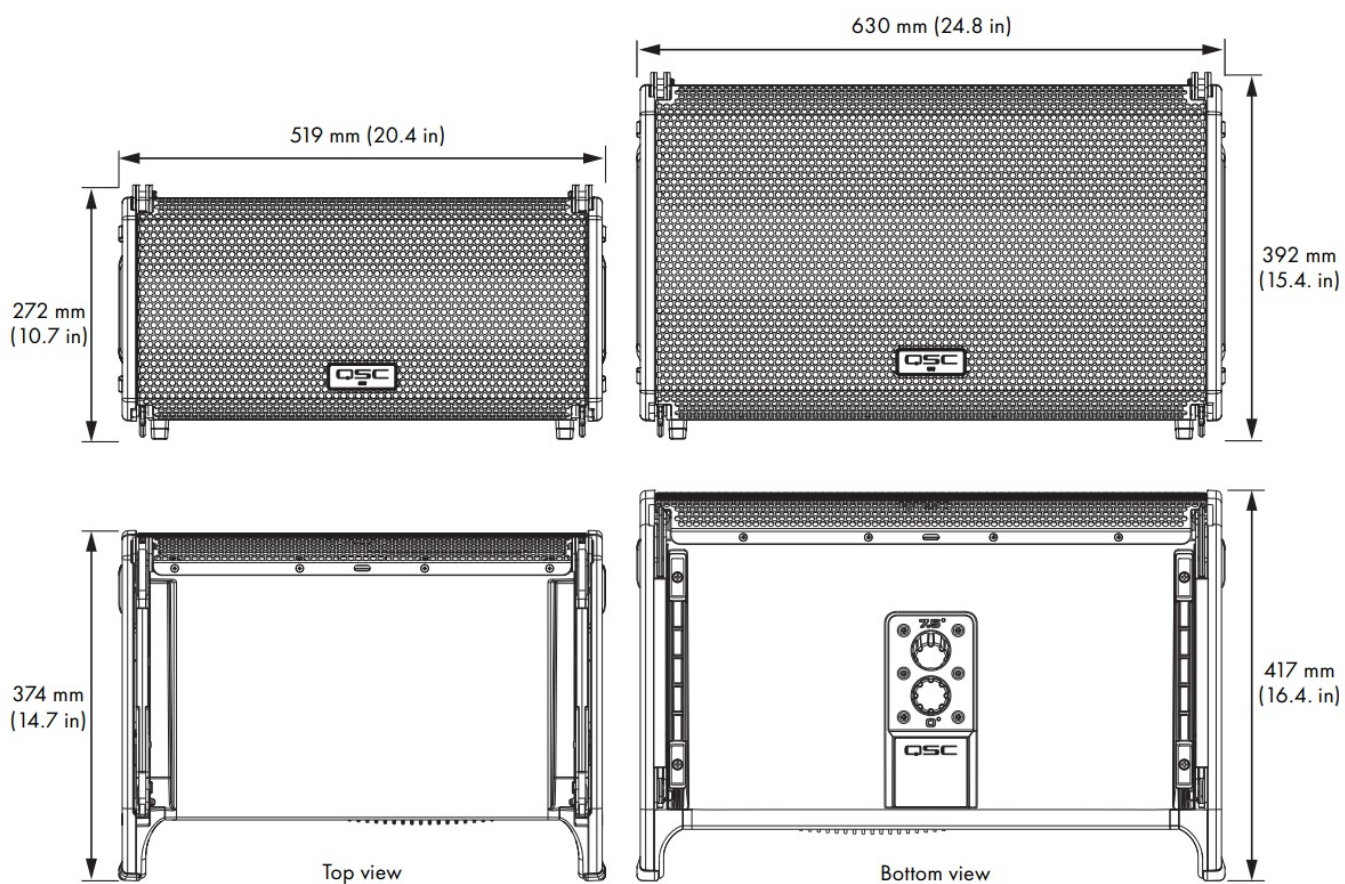


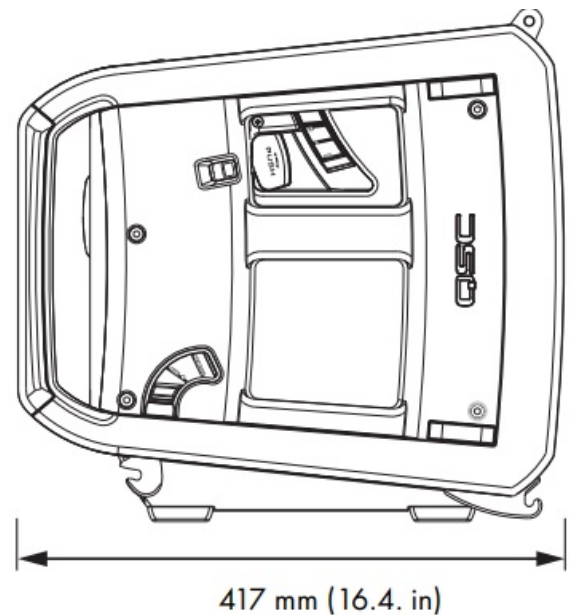
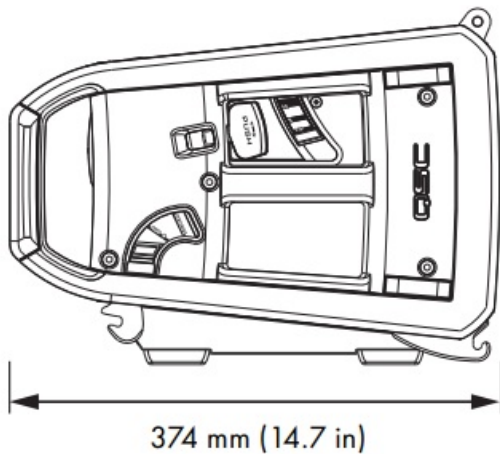
LA112 Vertical beamwidth  
Single-box (blue). Three-boxes set at 12 deg splay angles (red).

## Deployment Options



## Dimensions





## Optional Accessories

### LA108

- LA108-TOTE (Heavy-duty Cordura Transport Tote with Velcro flap)
- LA108-AF (Array Frame for LA108)
- LA108-KIT-SA (Stack Adapter Kit) to combine with LA108-AF

### LA112

- LA112-TOTE (Heavy-duty Cordura Transport Tote with Velcro flap)
- LA112-AF (Array Frame for LA112)
- LA112-KIT-SA (Stack Adapter Kit) to combine with LA112-AF

WS-IO (Temporary Weather Shield protecting the input/output section of each LA108/LA112)


- LA-KIT-I (Installation Kit: 2x Shackle Adapters and 1x Pullback Eyebolt)
- LA-KIT-J (International Jumper Kit: 2x 60 cm PowerCON TRUE1 and 2x 60 cm EtherCON jumpers, 1.5 mm<sup>2</sup> /H05VV cables)
- LA-KIT-J-NA (North America Jumper Kit: 2x 24-in PowerCON TRUE1 and 2x 24-in EtherCON jumpers, 12 AWG/SVT cables, NEC compliant)

## CONTACT INFORMATION

[qsc.com/contact-us](https://qsc.com/contact-us)

© 2024 QSC, LLC all rights reserved. QSC, Q-SYS and the QSC logo are registered trademarks of QSC, LLC in the U.S. Patent and Trademark office and other countries. All other trademarks are the property of their respective owners. Patents may apply or be pending.

## Documents / Resources

	<p><b><a href="#">QSC LA108, LA112 Active Line Array Loudspeakers</a></b> [pdf] Owner's Manual  LA108 LA112 Active Line Array Loudspeakers, LA108 LA112, Active Line Array Loudspeakers, Array Loudspeakers, Loudspeakers</p>
--	---

## References

- [📧 Contact US - QSC](#)
- [User Manual](#)

[Manuals+](#), [Privacy Policy](#)

This website is an independent publication and is neither affiliated with nor endorsed by any of the trademark owners. The "Bluetooth®" word mark and logos are registered trademarks owned by Bluetooth SIG, Inc. The "Wi-Fi®" word mark and logos are registered trademarks owned by the Wi-Fi Alliance. Any use of these marks on this website does not imply any affiliation with or endorsement.