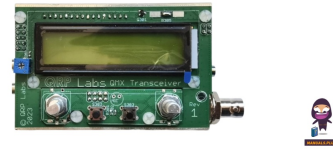


QRP Labs Rev 1 PCB Multi Mode Transceiver



QRP Labs Rev 1 PCB Multi Mode Transceiver Installation Guide

[Home](#) » [QRP Labs](#) » QRP Labs Rev 1 PCB Multi Mode Transceiver Installation Guide 

Contents

- [1 QRP Labs Rev 1 PCB Multi-Mode Transceiver](#)
- [2 Product Information](#)
- [3 Product Usage Instructions](#)
- [4 Frequently Asked Questions](#)
- [5 Connectors](#)
- [6 SMS power supplies](#)
- [7 Microcontroller and digital sections](#)
- [8 Front panel board](#)
- [9 Receiver](#)
- [10 Transmitter](#)
- [11 Documents / Resources](#)
 - [11.1 References](#)
- [12 Related Posts](#)

QRP Labs

QRP Labs Rev 1 PCB Multi-Mode Transceiver



Product Information

Specifications

- Product Name: QMX+ PCB Rev 1 Schematics
- Component Numbering: Indicates the page number of the schematics
- Sections:
 1. Connectors
 2. SMS Power Supplies
 3. Microcontroller and Digital Sections
 4. Front Panel Board
 5. Receiver
 6. Transmitter

Product Usage Instructions

1. Connectors

Follow the schematics to identify and connect components numbered under the 0 section.

2. SMS Power Supplies

Refer to the schematics to locate and understand the power supply connections for SMS.

3. Microcontroller and Digital Sections

For the microcontroller and digital sections, ensure components under section 2 are correctly placed and connected as per the schematics.

4. Front Panel Board

Install and connect components related to the front panel board by referencing the schematics under section 3.

5. Receiver and Transmitter

Assemble and connect the receiver and transmitter components as per the schematics provided under sections 4 and 5 respectively.

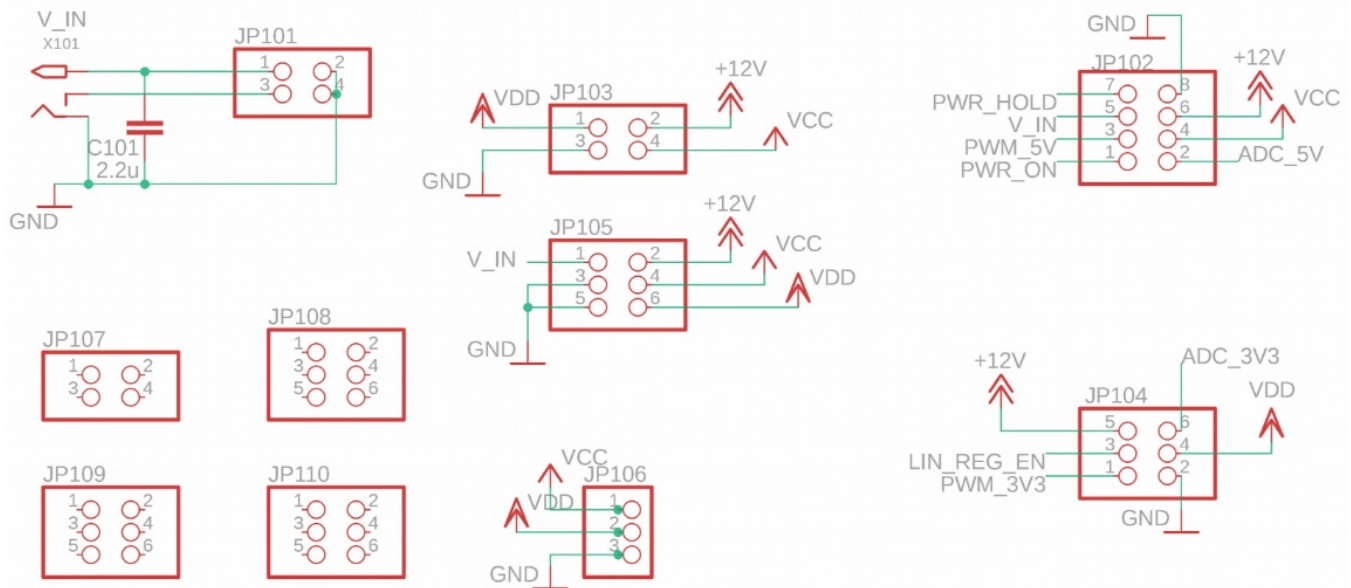
Frequently Asked Questions

- **Q: Can I use components from different sections interchangeably?**
 - A: It is recommended to use components as specified in their respective sections to ensure proper functionality and compatibility.
- **Q: How do I identify the location of a specific component on the PCB?**
 - A: Refer to the component numbering scheme where components numbered with the same digits indicate they are on the same page of the schematics.

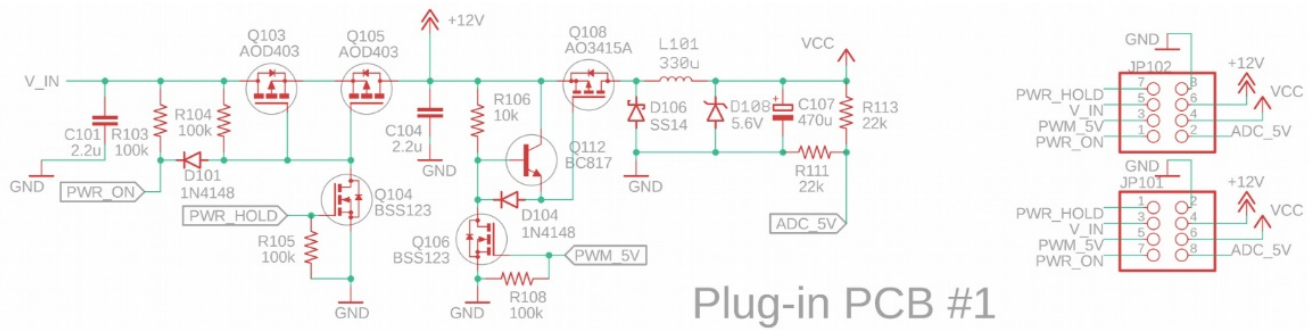
QMX+ PCB Rev 1 Schematics

Note, component numbering indicates the page number of the schematics; e.g. all components numbered 1xx are on page 1 etc. R106, for example, is on schematics

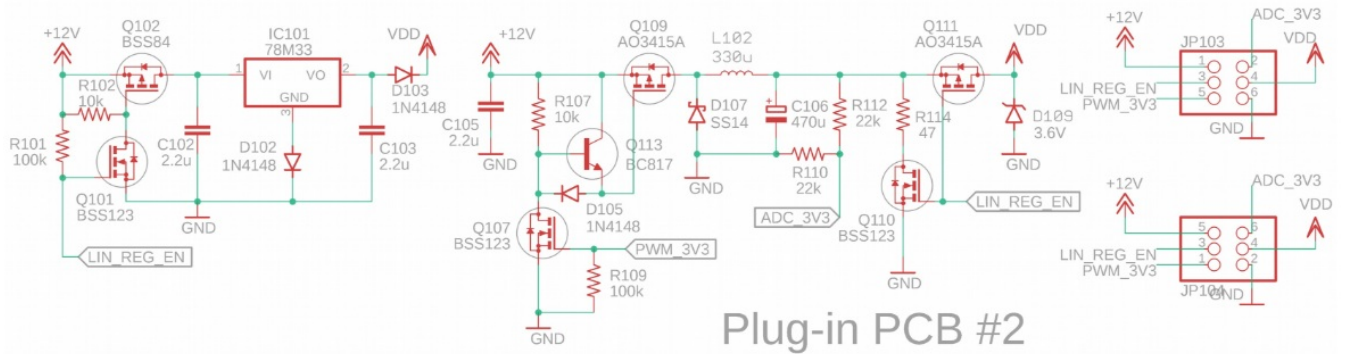
Connectors



SMS power supplies

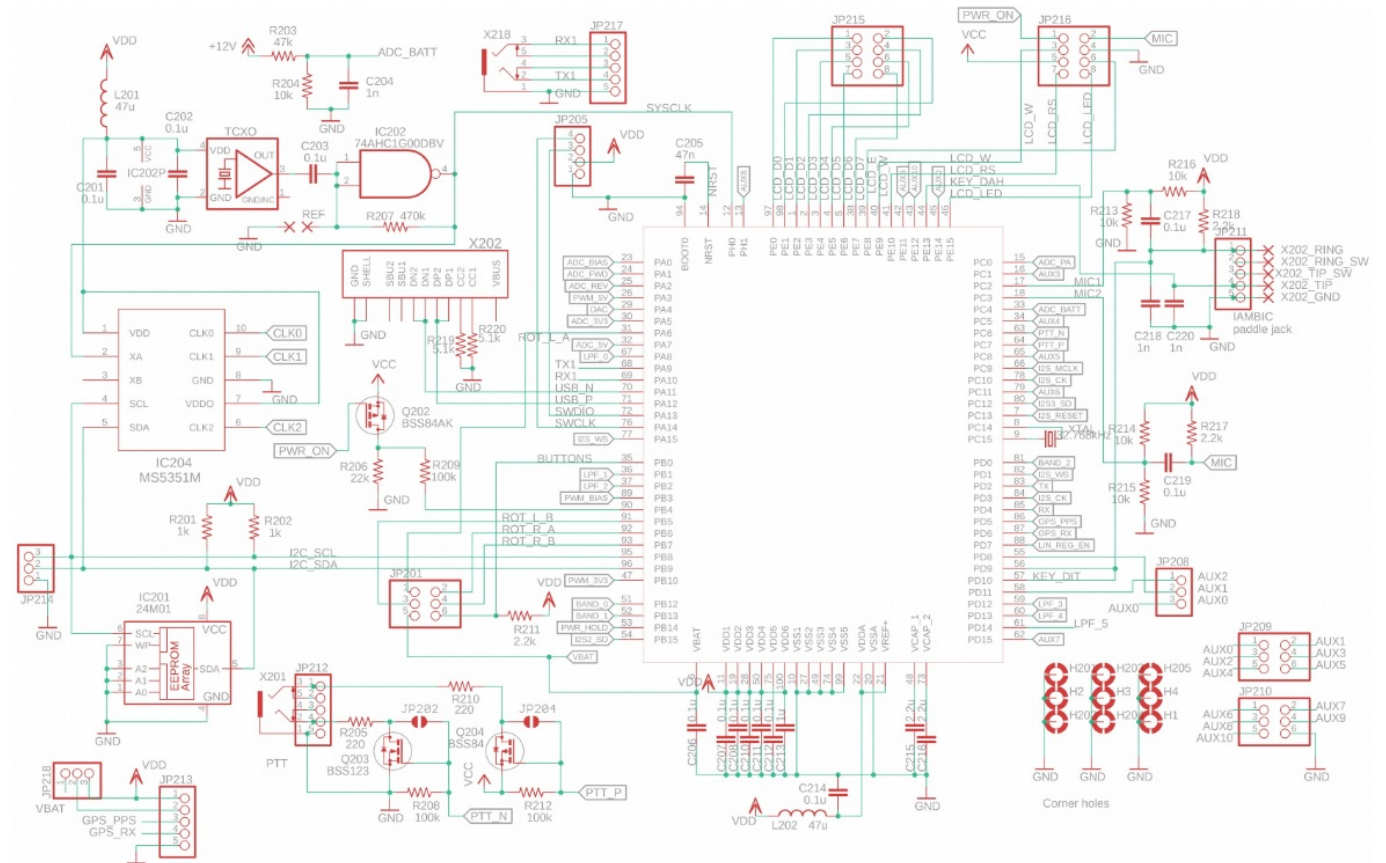


Plug-in PCB #1

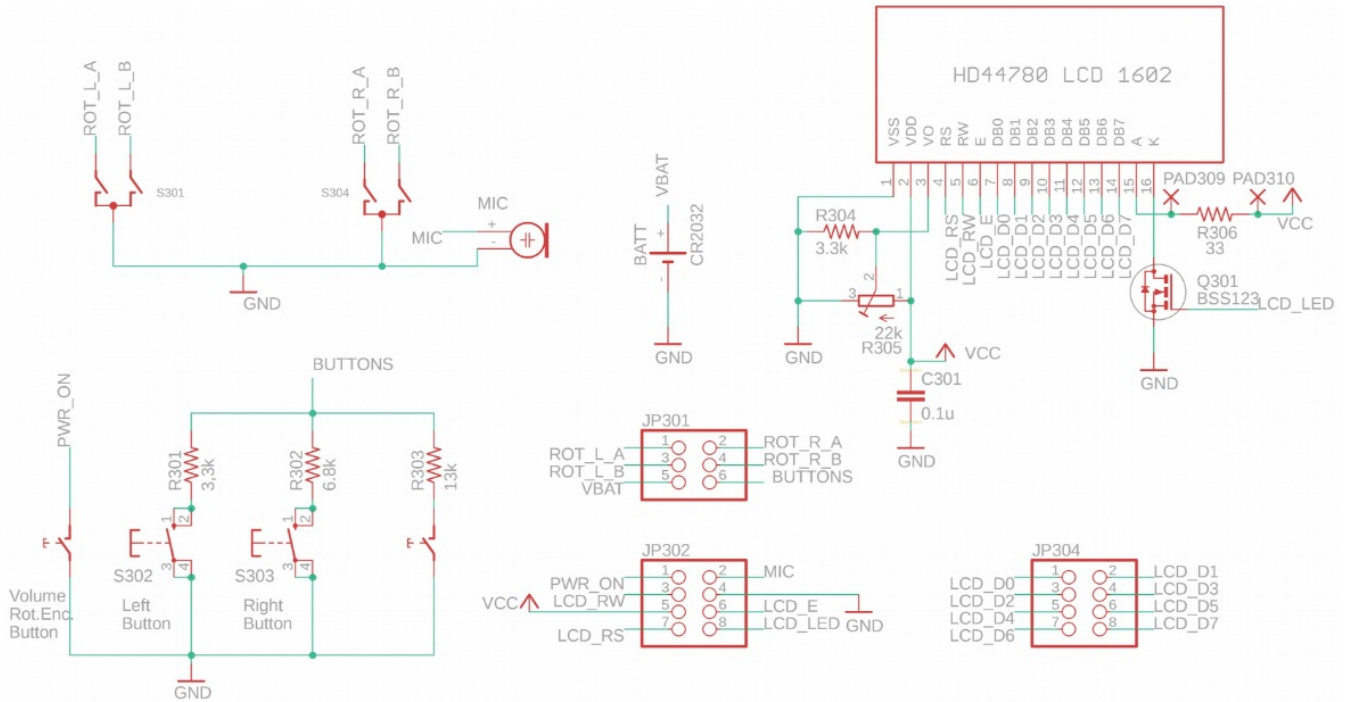


Plug-in PCB #2

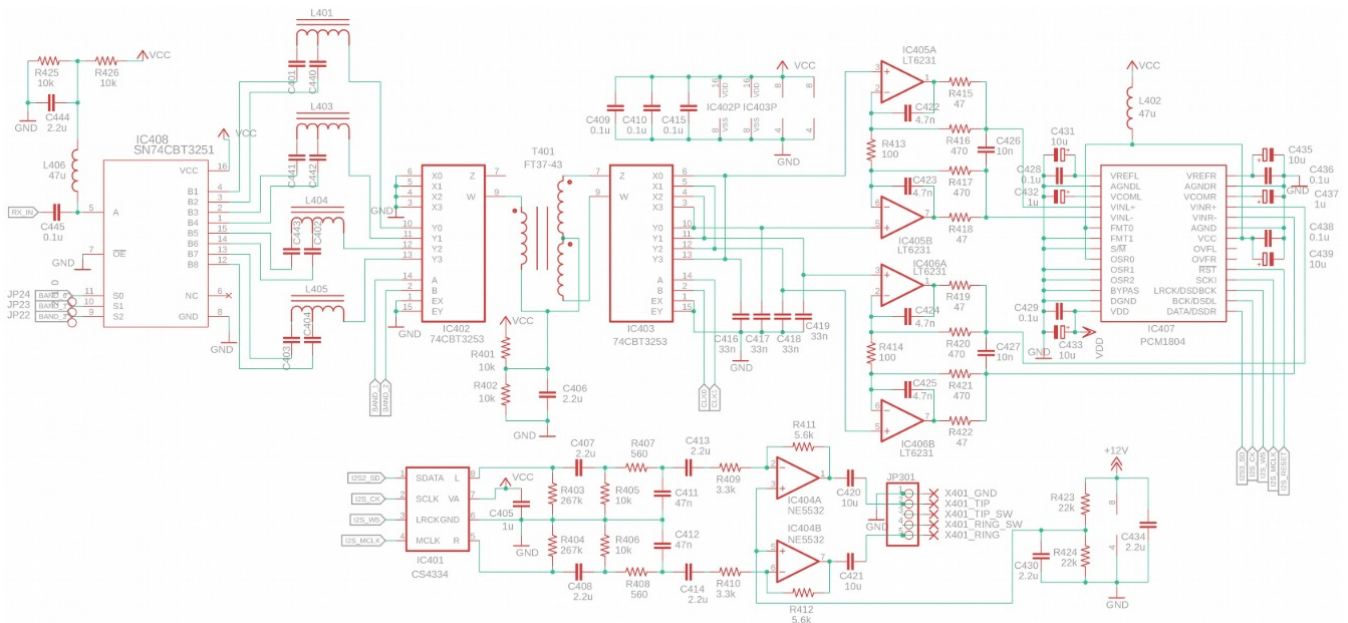
Microcontroller and digital sections



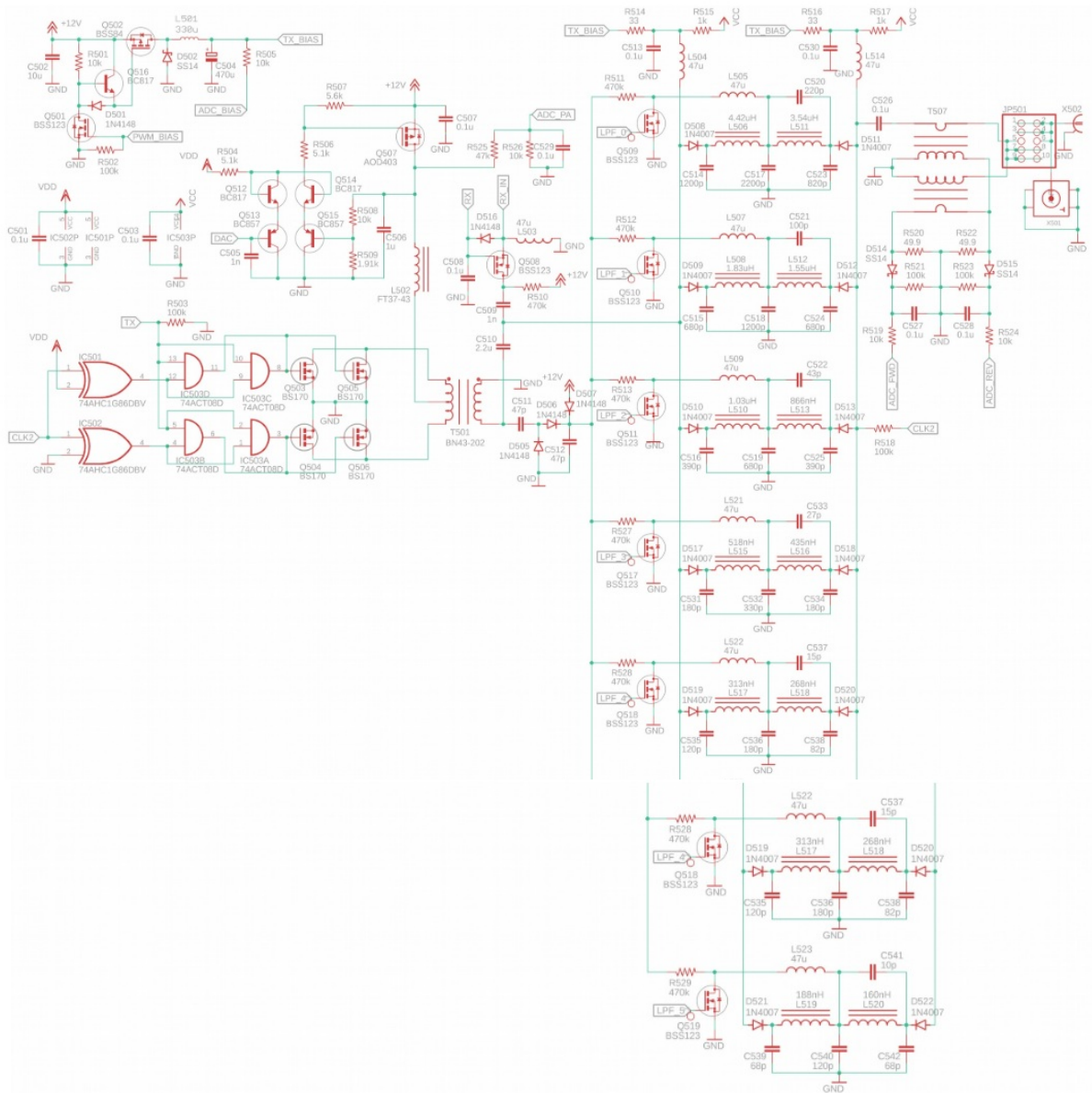
Front panel board



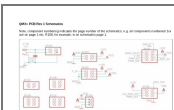
Receiver



Transmitter



Documents / Resources



[QRP Labs Rev 1 PCB Multi Mode Transceiver](#) [pdf] Installation Guide

Rev 1 PCB Multi Mode Transceiver, Rev 1 PCB, Multi Mode Transceiver, Mode Transceiver, Tra
nsceiver

References

- User Manual

[Manuals+](#), [Privacy Policy](#)

This website is an independent publication and is neither affiliated with nor endorsed by any of the trademark owners. The "Bluetooth®" word mark and logos are registered trademarks owned by Bluetooth SIG, Inc. The "Wi-Fi®" word mark and logos are registered trademarks owned by the Wi-Fi Alliance. Any use of these marks on this website does not imply any affiliation with or endorsement.