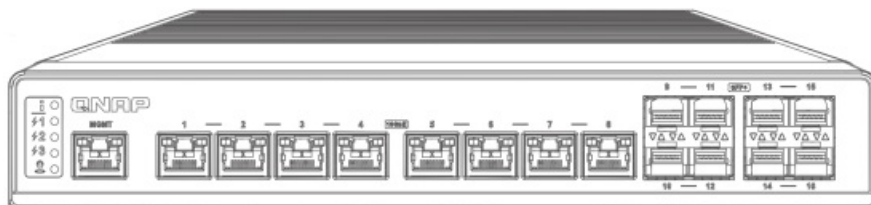




QNAP QSW-IM3216-8S8T Managed 10G Ethernet Network Switch Installation Guide

[Home](#) » [QNAP](#) » QNAP QSW-IM3216-8S8T Managed 10G Ethernet Network Switch Installation Guide 

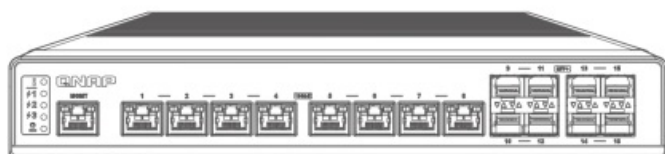
QNAP QSW-IM3216-8S8T Managed 10G Ethernet Network Switch



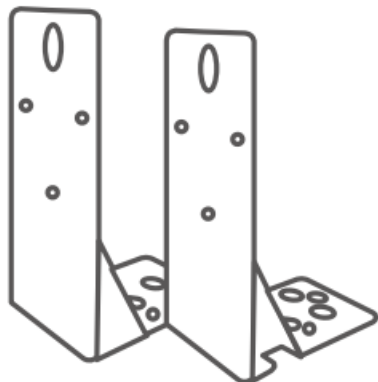
Contents

- [1 In The Box](#)
- [2 Hardware Overview](#)
- [3 Hardware Installation](#)
- [4 Accessing the Web User Interface](#)
- [5 Logging into the Web User Interface](#)
- [6 LED Behavior](#)
- [7 Specifications](#)
- [8 Customer Support](#)
- [9 Documents / Resources](#)
 - [9.1 References](#)
- [10 Related Posts](#)

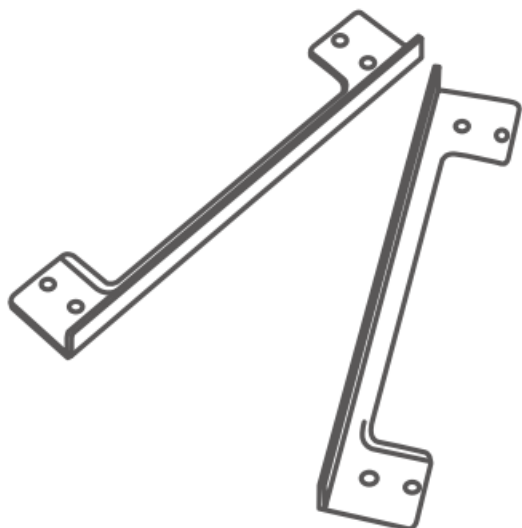
In The Box



- SP-EARQSWSTANDARDRACK-01



- SP-EARQSWSTANDARDRACK-02



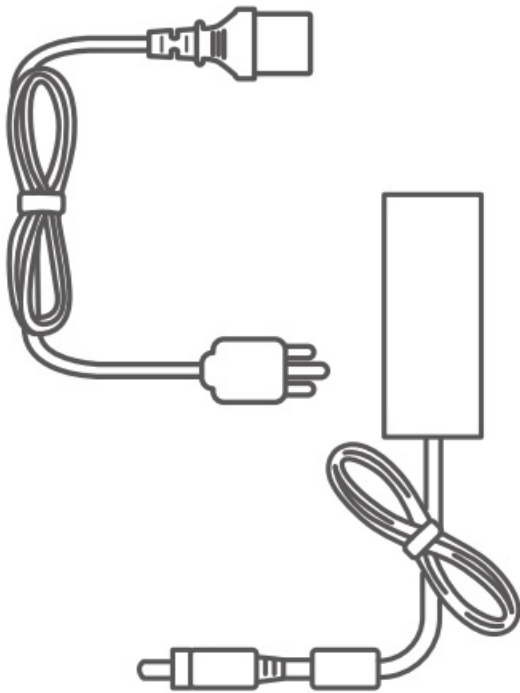
- Bracket screws



- Foot pads



- Power adapter



- QIG



Optional:

10GbE Network Card
 QXG-10G2SF-X710 (SFP+ x2)
 QXG-10G2T-X710 (RJ45 x2)
 QXG-10G2T (RJ45 x2)
 QXG-10G1T (RJ45 x1)

Optional:

SFP+ DAC cable
 CAB-DAC15M-SFPP (1.5m)
 CAB-DAC30M-SFPP (3m)
 CAB-DAC50M-SFPP (5m)

Optional:

Industrial NAS
 TS-i410X

Optional:

M.2 SSD/10GbE Expansion Card
QM2-2P410G2T (2 x RJ45 + 2 x M.2)
QM2-2P410G1T (1 x RJ45 + 2 x M.2)
QM2-2P10G1TB (1 x RJ45 + 2 x M.2)

Optional:

Transceiver module

(excluding optical fiber)

TRX-10GITSFPP-SR (up to 300m)

TRX-10GSFPP-LR (up to 10km)

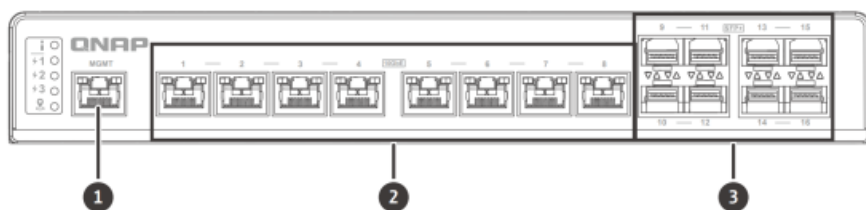
* Make sure the fiber-optic Small Form-factor Pluggable (SFP) module complies with CNS 15016-2 or IEC 60852-1 certifications and Class 1 Laser specifications.

Hardware Overview

Panel Components

1. Maintenance port
2. 10GbE RJ45 ports
3. 10GbE SFP+ ports

Front



4. Power input
5. Console port
6. Reset button*

Press 5s to reset password.

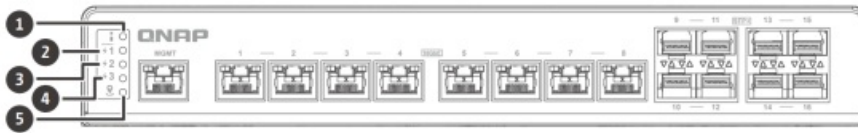
Press 10s to factory preset.

Back

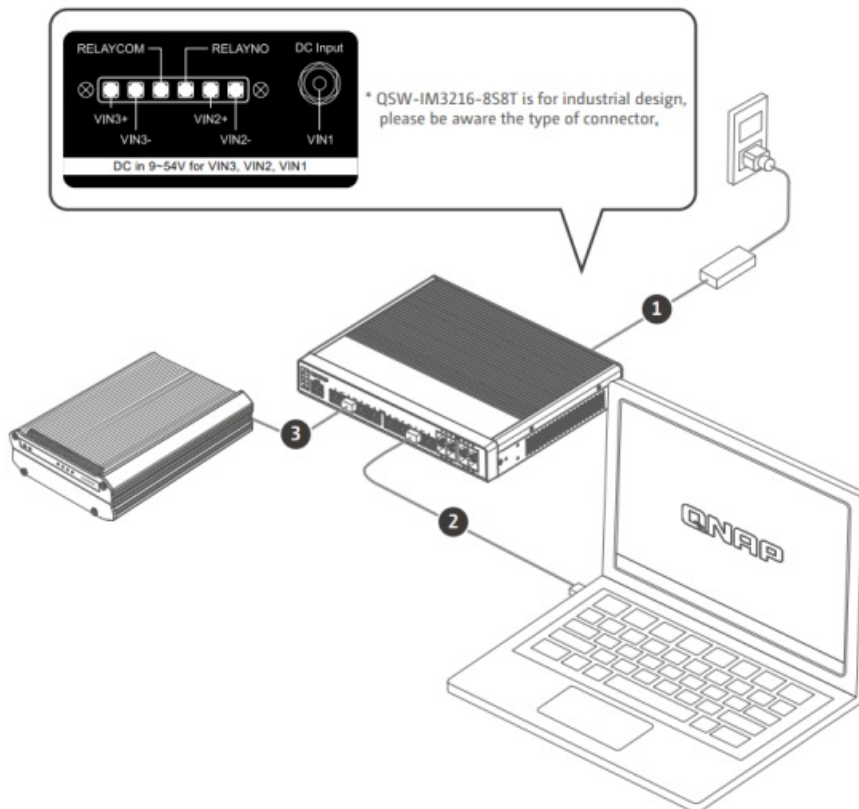
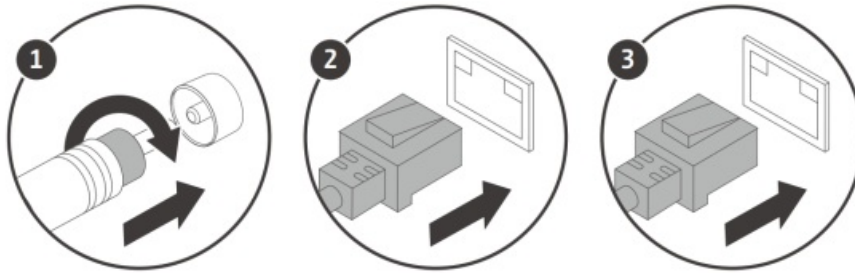


LEDs

1. System status LED
2. Power 1 LED
3. Power 2 LED
4. Power 3 LED
5. Locator LED



Hardware Installation



Accessing the Web User Interface

By default, the QSW-IM3216-8S8T switch support DHCP clients. When connected to a network, the switch automatically obtains an IP address from a DHCP server. You can then use Q finder Pro to locate the switch and access QSS.

If the device is unable to connect to a DHCP server to obtain an IP address, you can access the web user interface by changing the IP address of the computer to 169.254.100.102.

Note : Ensure that you change the IP address of the computer to its previous setting after configuring the switch.

The default IP address of the switch is 169.254.100.101.

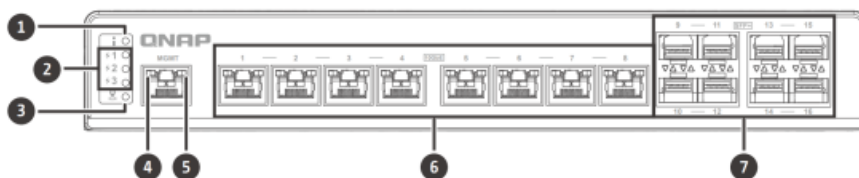


Logging into the Web User Interface

Default username : admin

Default password : This is a unique and QNAP-encrypted [Cloud Key] consisting of the letter 'Q' followed by eight digits, making it distinct for each device. Displayed on the device's label.

LED Behavior



| LED | Status | Description |
|--|------------------------|---|
| 1 System Status | Flashing green | Device is booting. |
| | Steady green | Device is booted |
| | Off | Device is powered off |
| 2 Power status (power 1, power 2, power 3) | Green | Power status is fine. |
| | Red | Fatal error on the power. |
| | Off | Power is off. |
| 3 Locator | Flashes amber | The switch is being located. Note: The locator LED flashes for 30 minutes when the locator function is enabled. |
| | Off | The locator function is disabled. |
| 4 Management RJ45 Link and Activity LED | Amber | The management port is operating as an uplink port. |
| | Flashes amber | Data is being transmitted. |
| | Off | There is no network connection. |
| 5 Management RJ45 Speed LED | Green | The network connection is operating at 1 Gbps. |
| | Amber | The network connection is operating at 100 Mbps. |
| | Flashes green or amber | Data is being transmitted. |
| | Off | There is no network connection |
| 6 10GbE RJ45 | Green (Left) | Link is operating at 10 Gbps, flashing: link up, off: no link. |
| | Amber (Right) | Link is operating at 5G/2.5G/1G/100 Mbps, flashing: link up, off: no link. |
| 7 10GbE SFP+ | Green (Left) | Link is operating at 10 Gbps, flashing: link up, off: no link. |
| | Amber (Right) | Link is operating at 1 Gbps, flashing: link up, off: no link. |

Specifications

| | |
|------------------------|---|
| Model | QSW-IM3216-8S8T |
| Dimensions (H x W x D) | 43.5 x 285 x 231.5mm (1.71 x 11.22 x 9.11 in) |
| Net weight | 4.26 kg (9.39 lbs) |
| Input voltage range | DC in 9-54V |
| Switching bandwidth | 320 Gbps |
| SFP+ ports | 8 |
| 10GBASE-T (RJ45) | 8 |
| Operating temperature | Natural convection operating temperature -30°C-65°C (-22°F –149°F) Non natural convection operating temperature -30°C-45°C (-22°F –113°F) |
| Relative humidity | 5~95% Non-condensing |



Download Center

www.qnap.com/download

Visit Download Center for our full guides and utilities



FCC conditions: (1) this device may not cause harmful interference, and (2) this device must accept any interference received, including interference that may cause undesired operation.

FCC Class A Notice:

This equipment has been tested and found to comply with the limits for a Class A digital device, pursuant to Part 15 of the FCC Rules. These limits are designed to provide reasonable protection against harmful interference when the equipment is operated in a commercial environment. This equipment generates, uses, and can radiate radio frequency energy, and if not installed and used in accordance with the instruction manual, may cause harmful interference to radio communications. Operation of this equipment in a residential area is likely to cause harmful interference, in which case the user will be required to correct the interference at his own expense.

Modifications: Any modifications made to this device that are not approved by QNAP Systems, Inc. may void the authority granted to the user by the FCC to operate this equipment.



This device complies with CE compliance Class A.



According to the requirement of the WEEE legislation the following user information is provided to customers for all branded QNAP Electronics products subject to the WEEE directive.

This symbol on the product or on its packaging indicates that this product must not be disposed of with your other household waste. Instead, it is your responsibility to dispose of your waste equipment by handing it over to a designated collection point for the recycling of waste electrical and electronic equipment. The separate collection and recycling of your waste equipment at the time of disposal will help to conserve natural resources and ensure that it is recycled in a manner that protects human health and the environment. For more information about where you can drop off your waste equipment for recycling, please contact your local city office, your household waste disposal service or the shop where you purchased the product.



Office in EU;

QNAP GmbH
Karl-Arnold-Straße 26,
47877 Willich, Germany

Office in UK;


QNAP Ltd,
2 Drakes Meadow, Swindon SN3 3LL
United Kingdom

This device complies with the UKCA requirements for products sold in Great Britain.



D33B77
RoHS

www.qnap.com/regulatory/

 Operation of this equipment in a residential environment could cause radio interference.
CAN ICES-003(A) / NMB-003(A)

WARNING

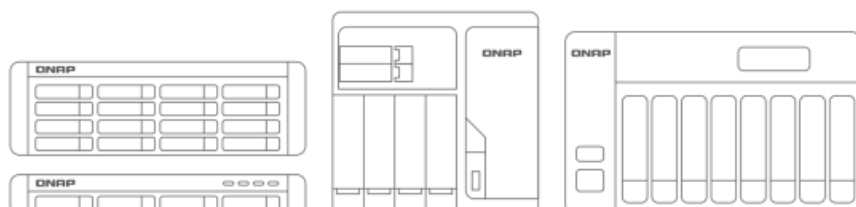
- **INGESTION HAZARD:** This product contains a button cell or coin battery.
- **DEATH** or serious injury can occur if ingested.
- A swallowed button cell or coin battery can cause Internal Chemical Burns in as little as 2 hours.
- **KEEP** new and used batteries **OUT OF REACH** of **CHILDREN**
- Seek immediate medical attention if a battery is suspected to be swallowed or inserted inside any part of the body



1. Battery type: BR2032.

2. Nominal battery voltage: 3.0 volts.

- Remove and immediately recycle or dispose of used batteries according to local regulations and keep away from children. Do NOT dispose of batteries in household trash or incinerate.
- Even used batteries may cause severe injury or death.
- Call a local poison control center for treatment information.
- Non-rechargeable batteries are not to be recharged.
- Do not force discharge, recharge, disassemble, heat above (manufacturer's specified temperature rating) or incinerate. Doing so may result in injury due to venting, leakage or explosion resulting in chemical burns.
- Ensure the batteries are installed correctly according to polarity (+ and -).
- Do not mix old and new batteries, different brands or types of batteries, such as alkaline, carbon-zinc, or rechargeable batteries.
- Remove and immediately recycle or dispose of batteries from equipment not used for an extended period of time according to local regulations.
- Always completely secure the battery compartment. If the battery compartment does not close securely, stop using the product, remove the batteries, and keep them away from children.




| | | | |
|---|---|---|---|
|  |  |  |  |
| install.qnap.com | service.qnap.com | download.qnap.com | Contact QNAP |

Customer Support




www.qnap.com



Documents / Resources

| | |
|--|--|
|  | <p>QNAP QSW-IM3216-8S8T Managed 10G Ethernet Network Switch [pdf] Installation Guide QSW-IM3216-8S8T, QSW-IM3216-8S8T Managed 10G Ethernet Network Switch, QSW-IM3216-8S8T, Managed 10G Ethernet Network Switch, Ethernet Network Switch, Network Switch</p> |
|--|--|

References

-  [Cloud Install](#)
-  [Customer Service - QNAP](#)
-  [QNAP \(US\) | Experts in NAS, Networking, and Smart Surveillance](#)
- [User Manual](#)

[Manuals+](#), [Privacy Policy](#)

This website is an independent publication and is neither affiliated with nor endorsed by any of the trademark owners. The "Bluetooth®" word mark and logos are registered trademarks owned by Bluetooth SIG, Inc. The "Wi-Fi®" word mark and logos are registered trademarks owned by the Wi-Fi Alliance. Any use of these marks on this website does not imply any affiliation with or endorsement.