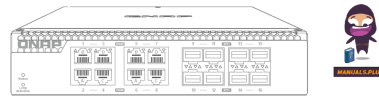


QNAP QSW-3216R-8S8T Half Width Rackmount 16 Port 10GbE Unmanaged



QNAP QSW-3216R-8S8T Half Width Rackmount 16 Port 10GbE Unmanaged Switch Installation Guide

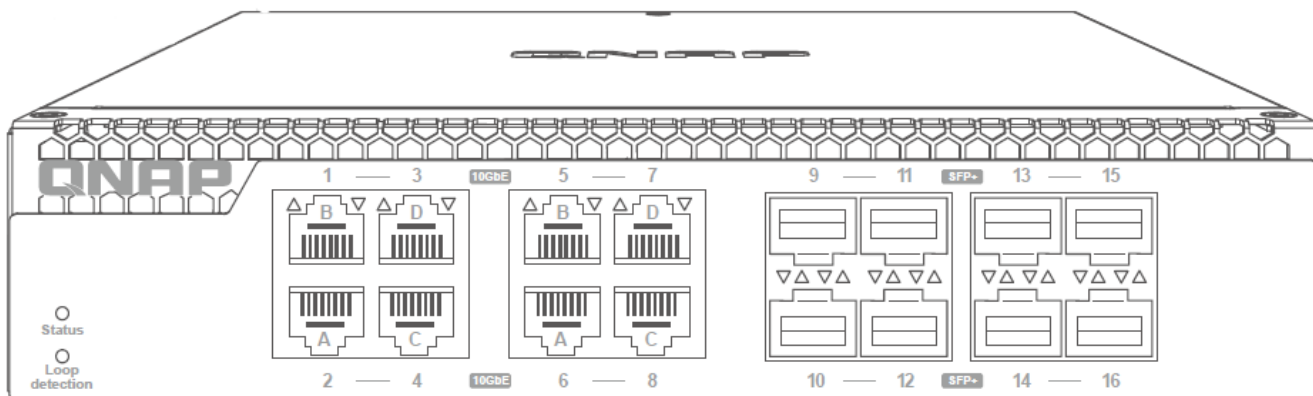
[Home](#) » [QNAP](#) » QNAP QSW-3216R-8S8T Half Width Rackmount 16 Port 10GbE Unmanaged Switch Installation Guide 

Contents

- [1 QNAP QSW-3216R-8S8T Half Width Rackmount 16 Port 10GbE Unmanaged Switch](#)
- [2 Product Information](#)
- [3 Product Usage](#)
- [4 Hardware Installation](#)
- [5 Specifications](#)
- [6 FAQ](#)
- [7 Documents / Resources](#)
 - [7.1 References](#)



QNAP QSW-3216R-8S8T Half Width Rackmount 16 Port 10GbE Unmanaged Switch



Product Information

The QSW-3216R-8S8T is a network switch that provides high-speed connectivity for your network. It features 16 10GbE RJ45 ports and 16 10GbE SFP+ ports, allowing you to connect various devices to your network.

Specifications

- Front Panel Ports: 16 x 10GbE RJ45 ports, 16 x 10GbE SFP+ ports
- LED Behavior: System Status, Loop detection, 10GbE RJ45, 10GbE SFP+

Hardware Installation

To install the QSW-3216R-8S8T, follow these steps:

1. Attach the foot pads to the bottom of the switch.
2. Mount the switch on a rack using the rack mount kits.
3. Secure the switch to the rack using the bracket screws.
4. Connect the power cord to the switch and a power outlet.

LED Behavior

The LED indicators on the switch provide information about its status. Here is a description of the LED behaviors:

- **System Status:** The switch is powered off (LED: Green).
- **Loop Detection:** A network loop occurred (LED: Flashes green).
- **10GbE RJ45:** Data is being transmitted at 10 Gbps (LED: Red Off).
- **10GbE SFP+ (Left):** Data is being transmitted at 5 Gbps, 2.5 Gbps, 1 Gbps, or 100 Mbps (LED: Green Flashes green).
- **10GbE SFP+ (Right):** There is no network connection (LED: Off Green Flashes green Amber Flashes amber Off Green Flashes green Off Amber Flashes amber Off).

Product Usage

Connecting Devices

To connect devices to the QSW-3216R-8S8T switch, follow these steps:

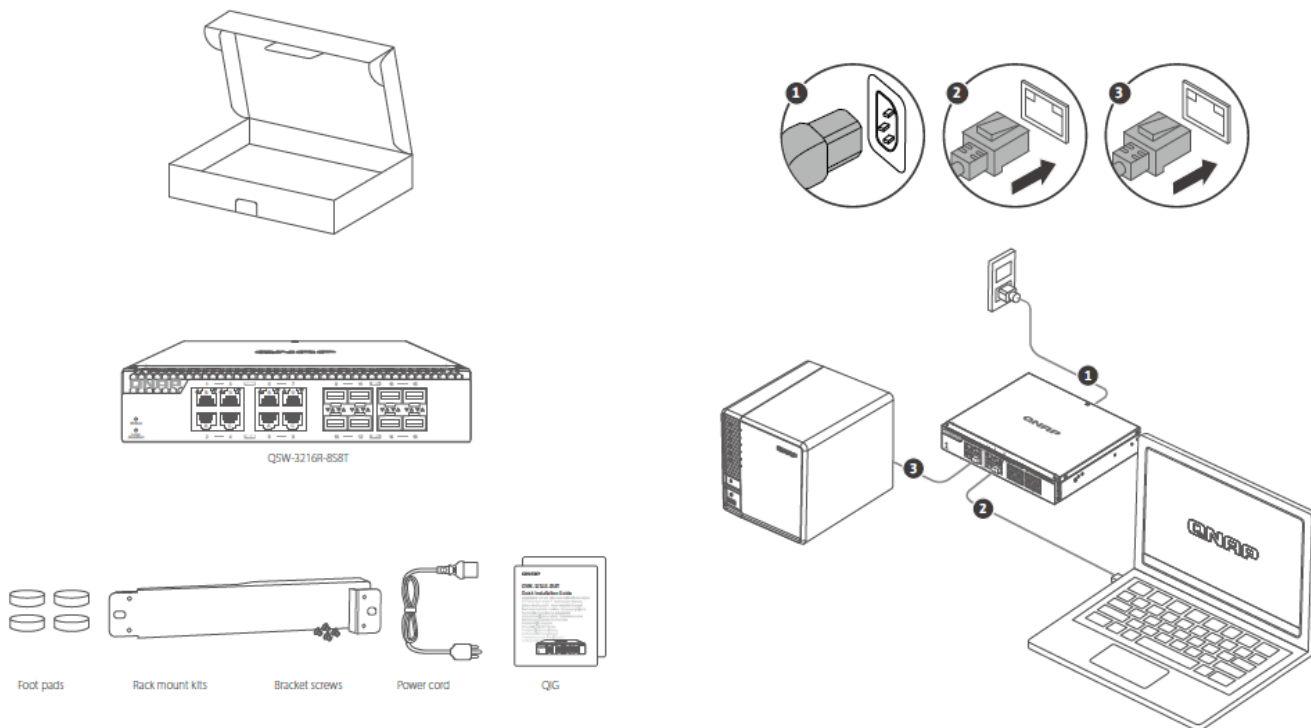
1. Identify the appropriate ports on the front panel of the switch.
2. For devices with 10GbE RJ45 ports, use Ethernet cables to connect them to the corresponding RJ45 ports on the switch.
3. For devices with 10GbE SFP+ ports, use SFP+ modules and fiber optic cables to connect them to the corresponding SFP+ ports on the switch.

Monitoring LED Indicators

To monitor the LED indicators on the switch, follow these steps:

1. Refer to the LED behavior section above for the meaning of each LED indicator.
2. Observe the LED indicators on the switch to determine its status and network activity.

Hardware Installation



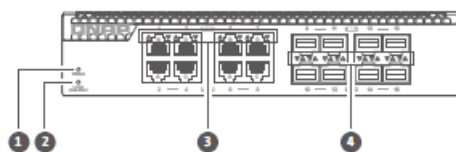
Hardware Overview

Front Panel Ports

- 10GbE RJ45 ports
- 10GbE SFP+ ports



LED Behavior



LED	Status	Description
❶ System Status	Green	The device is ready.
	Flashes green	<ul style="list-style-type: none"> - The device is being initialized. - The firmware is being updated. Note: When updating the firmware, do not remove the power cord or USB cable, and do not force-exit the application. <ul style="list-style-type: none"> - The device is being reset.
	Red	A fatal device error occurred.
	Off	The device is powered off.
❷ Loop detection LED	Red (Port LEDs encountering loops are off)	A network loop occurred.
	Off	No loops detected.
❸ 10GbE RJ45	Green	The link speed is operating at 10 Gbps.
	Flashes green	Data is being transmitted.
	Amber	The link speed is operating at 5 Gbps, 2.5 Gbps, 1Gbps, or 100Mbps.
	Flashes amber	Data is being transmitted.
	Off	There is no network connection.
❹ 10GbE SFP+ (Left)	Green	The link speed is operating at 10 Gbps.
	Flashes green	Data is being transmitted.
	Off	There is no network connection.
❺ 10GbE SFP+ (Right)	Amber	The link speed is operating at 1 Gbps.
	Flashes amber	Data is being transmitted.
	Off	There is no network connection.

Specifications

- **Model**
 - QSW-3216R-8S8T
- **Dimensions**
 - (H x W x D) 43.3 x 207 x 197 mm
- **Net weight**
 - 1.52kg
- **Input voltage range**
 - 100 – 240 VAC
- **Switching bandwidth**
 - 320 Gbps
- **10GbE SFP+ ports**
 - 8
- **10GbE RJ45 ports**
 - 8
- **Operating temperature**
 - 0°C to 40°C (32°F to 104°F)
- **Relative humidity**
 - 5% to 95% (non-condensing)

Download Center

www.qnap.com/download Visit the Download Center for our full guides and utilities.

conditions

1. this device may not cause harmful interference, and
2. this device must accept any interference received, including interference that may cause undesired operation.

FCC Class A Notice

This equipment has been tested and found to comply with the limits for a Class A digital device, pursuant to Part 15 of the FCC Rules. These limits are designed to provide reasonable protection against harmful interference when the equipment is operated in a commercial environment. This equipment generates, uses, and can radiate radio frequency energy, and if not installed and used in accordance with the instruction manual, may cause harmful interference to radio communications. Operation of this equipment in a residential area is likely to cause harmful interference, in which case the user will be required to correct the interference at his own expense.

Modifications

Any modifications made to this device that are not approved by QNAP Systems, Inc. may void the authority granted to the user by the FCC to operate this equipment. This device complies with CE compliance Class A. According to the requirement of the WEEE legislation, the following user information is provided to customers for all branded QNAP Electronics products subject to the WEEE directive. This symbol on the product or on its packaging indicates that this product must not be disposed of with your other household waste. Instead, it is your responsibility to dispose of your waste equipment by handing it over to a designated collection point for the recycling of waste electrical and electronic equipment. The separate collection and recycling of your waste equipment at the time of disposal will help to conserve natural resources and ensure that it is recycled in a manner that protects human health and the environment. For more information about where you can drop off your waste equipment for recycling, please contact your local city office, your household waste disposal service, or the shop where you purchased the product.

Office in EU

- QNAP GmbH, Karl-Arnold-Straße 26,
- 47877 Willich, Germany

Office in the UK

- QNAP Ltd,
- 2 Drakes Meadow, Swindon SN3 3LL
- United Kingdom
- This device complies with the UKCA requirements for products sold in Great Britain.

FAQ

Q: What should I do if the system status LED is off?

A: If the system status LED is off, check if the switch is properly connected to a power source. Make sure the power cord is securely plugged into both the switch and a power outlet.


Q: How can I identify a network loop?

A: If the loop detection LED is flashing green, it indicates that a network loop has occurred. To resolve this issue, check your network cables and connections for any loops or misconfigurations.

Q: What does it mean if the 10GbE RJ45 LED is red?

A: If the 10GbE RJ45 LED is red, it means that data is being transmitted at 10 Gbps through the corresponding RJ45 port.

Documents / Resources

<div><div>QNAP</div><div>QSW-3216R-8S8T</div><div>Quick Installation Guide</div><div><div>日本語</div><div>繁體中文</div><div>簡體中文</div><div>英語</div><div>法語</div><div>德語</div><div>義大利語</div><div>西班牙語</div><div>葡萄牙語</div><div>荷蘭語</div><div>波蘭語</div><div>捷克語</div><div>斯洛伐克語</div><div>希臘語</div><div>土耳其語</div><div>俄國語</div><div>烏克蘭語</div><div>白俄羅斯語</div><div>立陶宛語</div><div>拉脫維亞語</div><div>愛沙尼亞語</div><div>捷克語</div><div>斯洛伐克語</div><div>希臘語</div><div>土耳其語</div><div>俄國語</div><div>烏克蘭語</div><div>白俄羅斯語</div><div>立陶宛語</div><div>拉脫維亞語</div><div>愛沙尼亞語</div></div><div></div></div>	<p>QNAP QSW-3216R-8S8T Half Width Rackmount 16 Port 10GbE Unmanaged Switch [pdf] Installation Guide</p> <p>QSW-3216R-8S8T, QSW-3216R-8S8T Half Width Rackmount 16 Port 10GbE Unmanaged Switch, Half Width Rackmount 16 Port 10GbE Unmanaged Switch, Rackmount 16 Port 10GbE Unmanaged Switch, 16 Port 10GbE Unmanaged Switch, 10GbE Unmanaged Switch, Unmanaged Switch, Switch</p>
---	--

References

- [download.qnap.com](#)
- [Cloud Install](#)
- [Customer Service - QNAP](#)
- [Download Center | QNAP \(UK\)](#)
- [User Manual](#)